

MIDEA OUTDOOR UNIT DIAGNOSIS SOFTWARE MANUAL

Thank you very much for purchasing our air conditioner,
Before using your air conditioner, please read this manual carefully and keep it for future reference.

1
2
3
4
5
6
7
8
9
10
11
12
13
14
15
16
17
18
19
20
21
22
23
24
25
26
27
28
29
30
31
32
33
34
35
36
37
38
39
40
41
42
43
44
45
46
47
48
49
50
51
52
53
54
55
56
57
58
59
60
61
62
63
64
65
66
67
68
69
70
71
72
73
74
75
76
77
78
79
80
81
82
83
84
85
86
87
88
89
90
91
92
93
94
95
96
97
98
99
100

CONTENTS

INSTALLATION.....	1
1 INSTALL "NETFRAMEWORK 3.5" FIRST.....	2
2 INSTALL CUSTOMER END.....	7
3 SOFTWARE UNINSTALL.....	14
4 INSTALL THE SOFTDOG DRIVE-UP.....	15
OPERATION.....	19
1 SOFTWARE DESCRIPTIONS.....	20
2 BRIEF INSTRUCTIONS OF THE SOFTWARE FUNCTION.....	20
3 SOFTWARE DETAILED OPERATION INSTRUCTIONS.....	21



INSTALLATION

1. INSTALL “NETFRAMEWORK 3.5” FIRST

1) Open “dotnetfx35” folder.



2) Open “wcu” folder.



3) Open “dotNetFramework” folder.



4) Double click to run “dotNetFx35setup.exe” program.



5) It will show as Fig.1-1 and please wait for software loading.

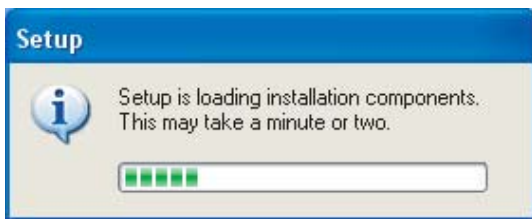


Fig.1-1

6) After loading finished, it will enter installation interface automatically. Click “Install” directly. It shows as Fig.1-2.

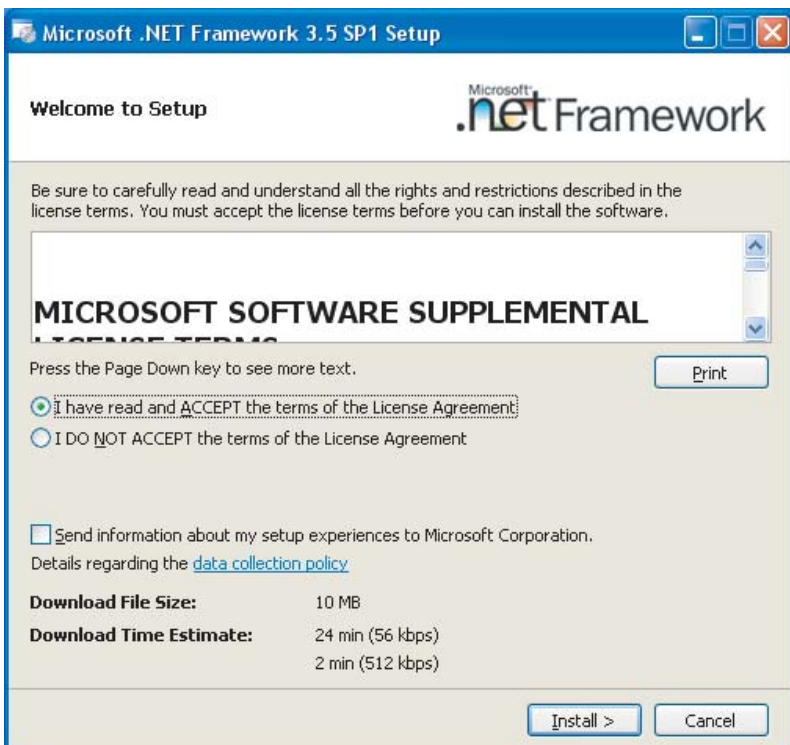


Fig.1-2

- 7) Installation parcel has been packed entirely. It is no need to connect to internet loading. Installation program can find the required resource automatically. Please wait for installation program to “loading finished”. It shows as Fig.1-3.

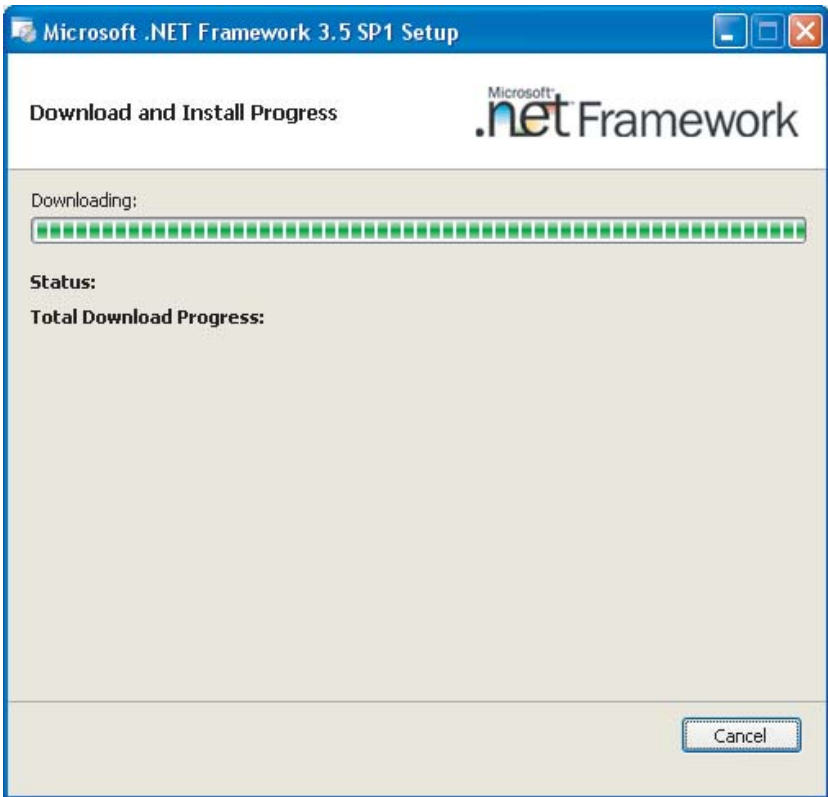


Fig.1-3

8) After loading finished, it will install automatically. After loading, it will shows as Fig.1-4.

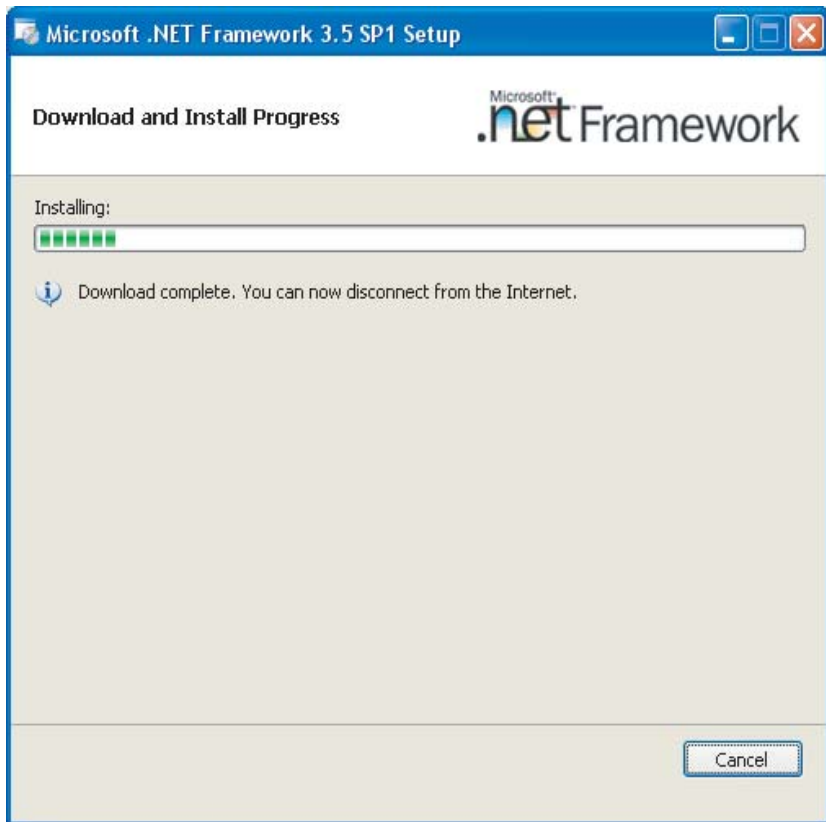


Fig.1-4

9) It indicates net Framework has been installed successfully when the screen shows as Fig.1-5. Please click “Exit” to finish the program installation.

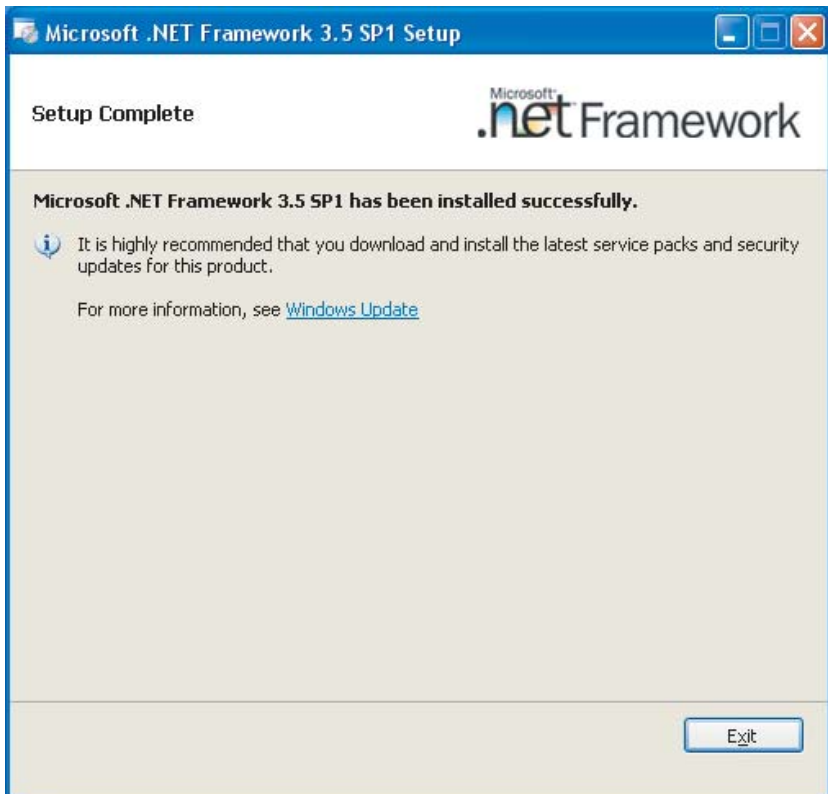


Fig.1-5

2. INSTALL CUSTOMER END

Double click to run “setup.exe”



1) It shows as Fig.2-1. Select to install the required language. Click “Next”.

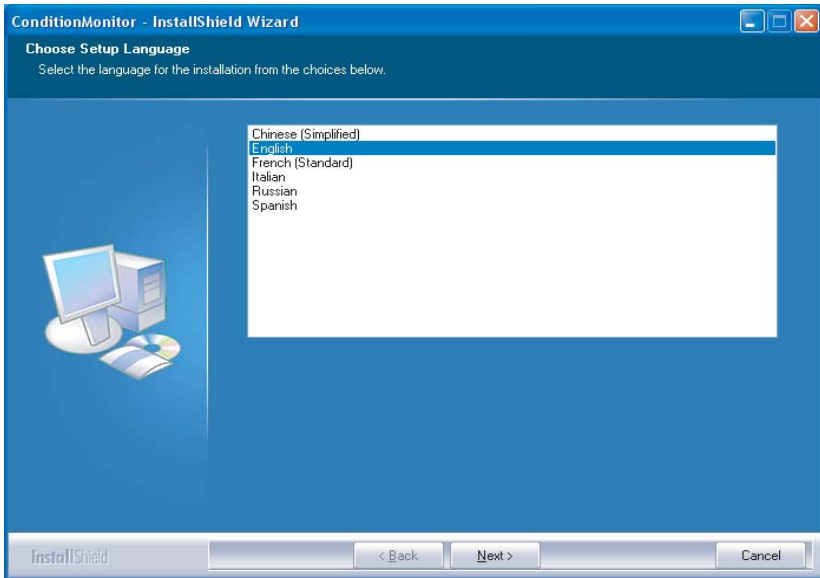


Fig.2-1

2) It shows as Fig.2-2. Click “Next” directly.

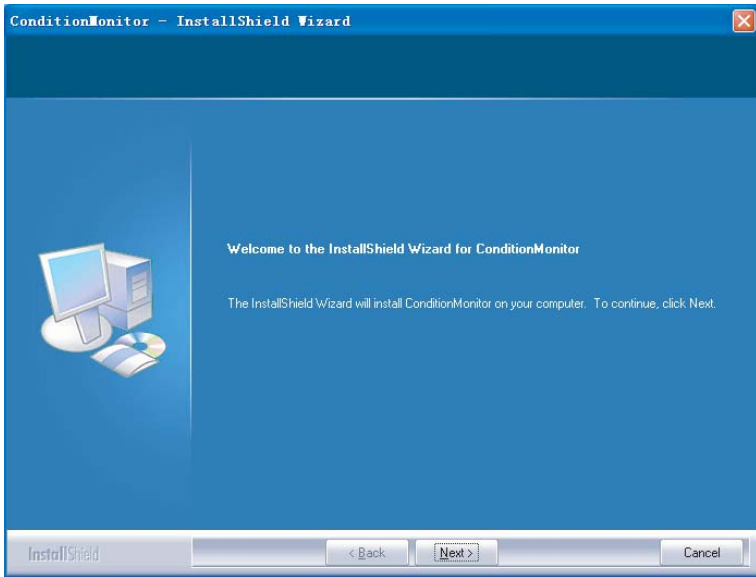


Fig.2-2

3) It shows as Fig.2-3. Click “Next” to install.

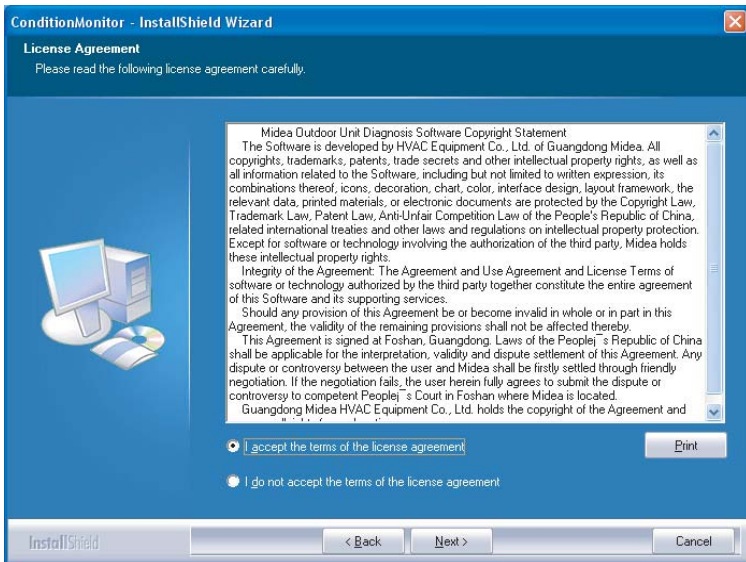


Fig.2-3

4) Fill in the information as Fig.2-4 shows. Then click “Next”.

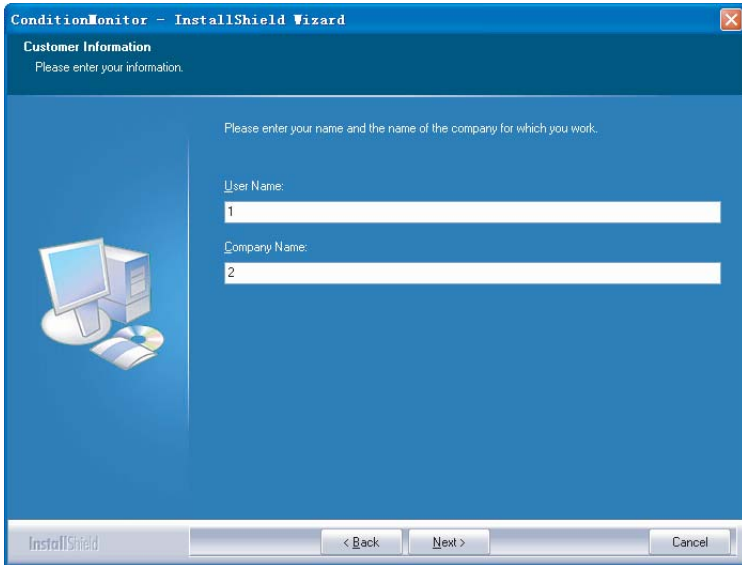


Fig.2-4

5) Select as Fig.2-5 shows. Install according to the default route. Select as Fig.2-6 shows. You can select the required route to install. Click “Next”.

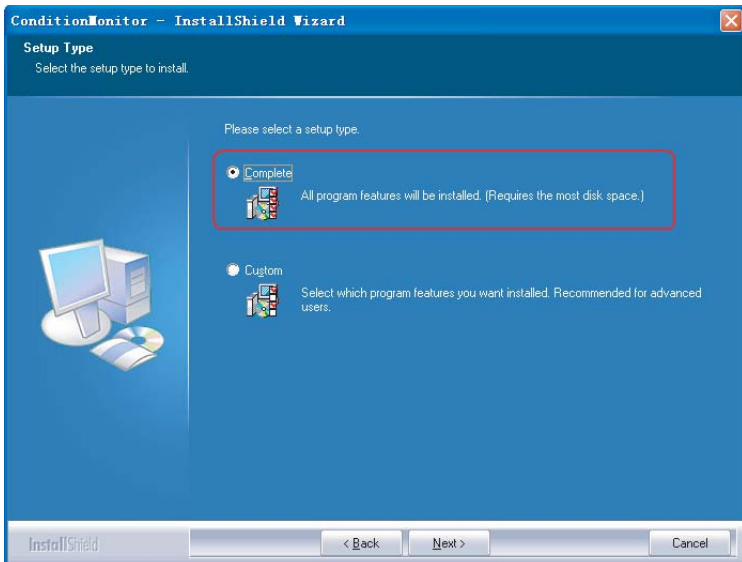


Fig.2-5

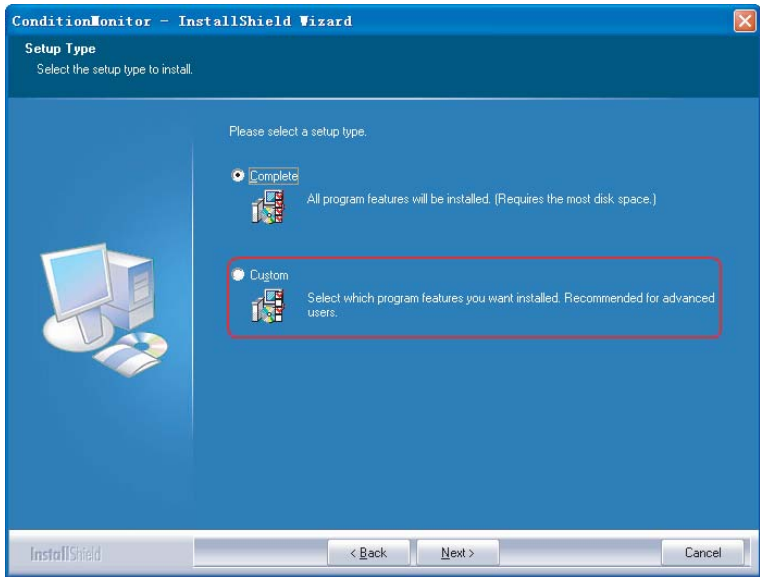


Fig.2-6

6) If the previous step shows as picture 2.5, click “Install” to install directly. It shows Fig.2-7.

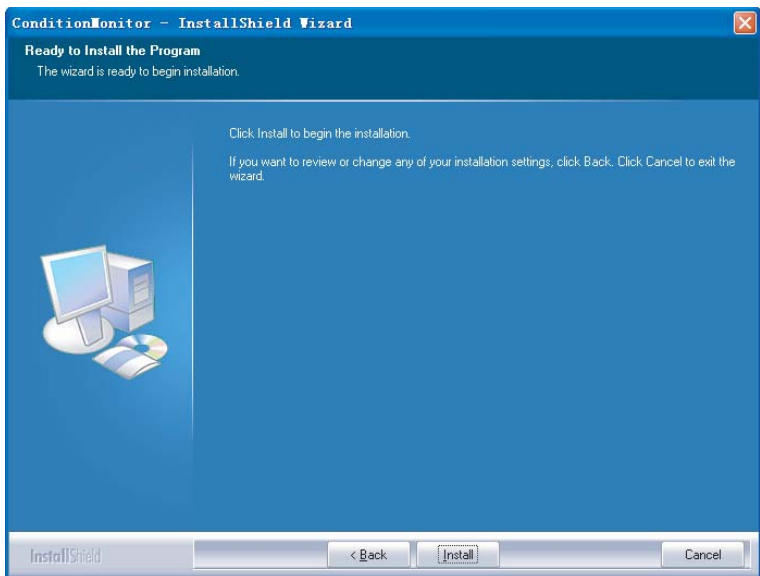


Fig.2-7

7) Software installation finished when Fig.2-8 shows. Click “Finish” to finish installation. It shows as Fig.2-8.

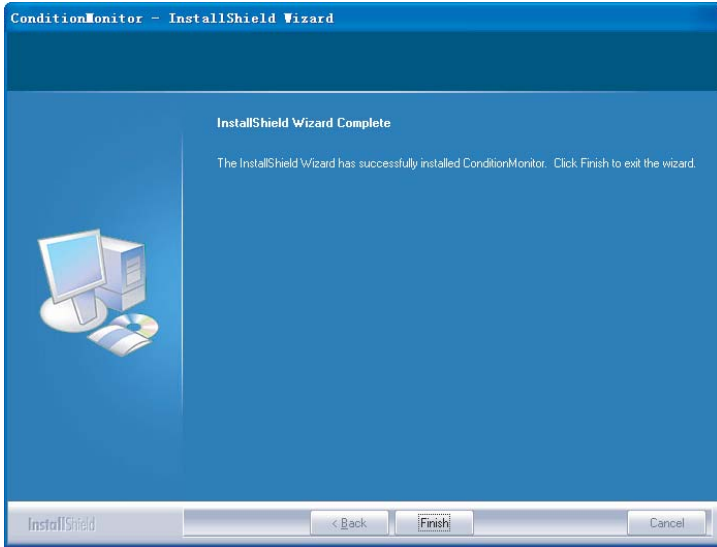


Fig.2-8

8) If install according to Fig.2-6 shows, click “Change” to change the installation route. It shows as Fig.2-9A,2.9B.

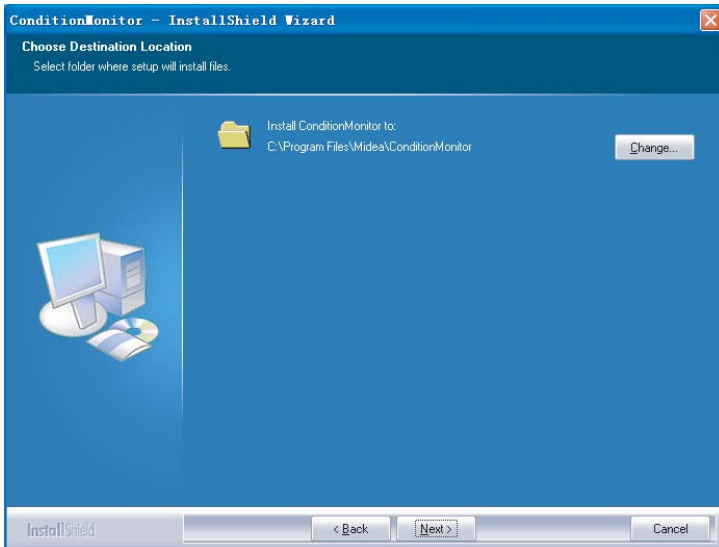


Fig.2-9A

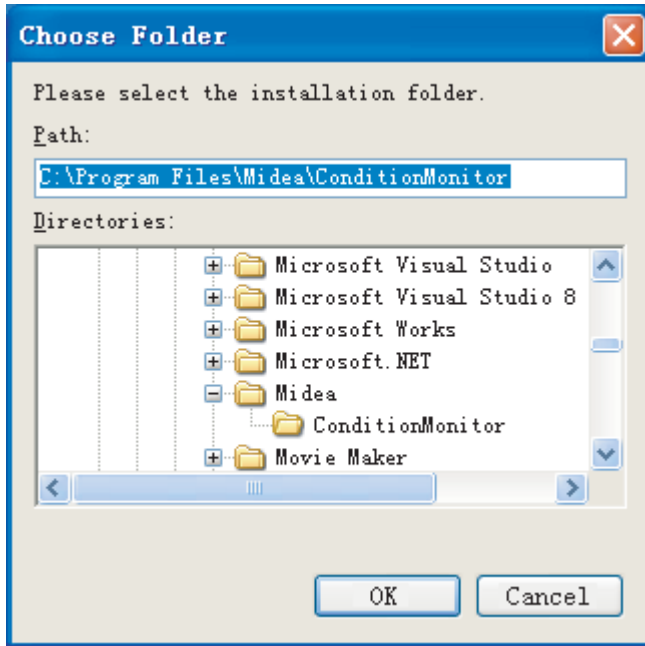


Fig.2-9B

9) Click "Next". It shows as Fig.2-10.

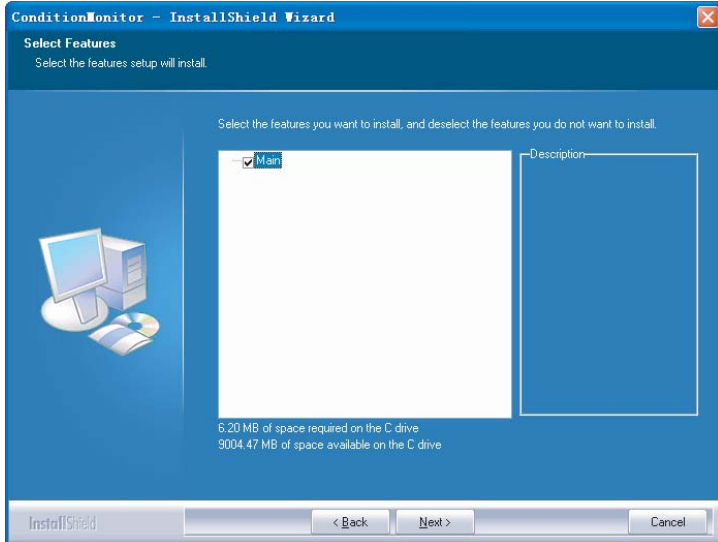


Fig.2-10

10) Click “Install” to enter installation directly. It shows as Fig.2-11.

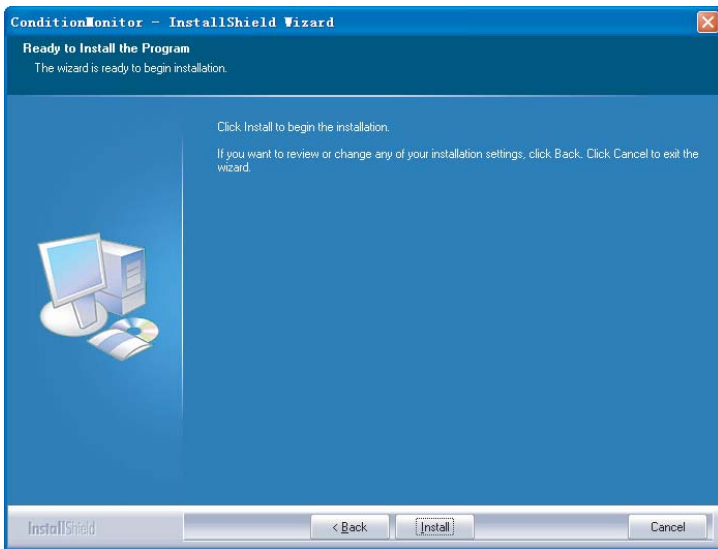


Fig.2-11

11) It indicates software installation finished when Fig.2-12 shows. Click “Finish” and installation finish.

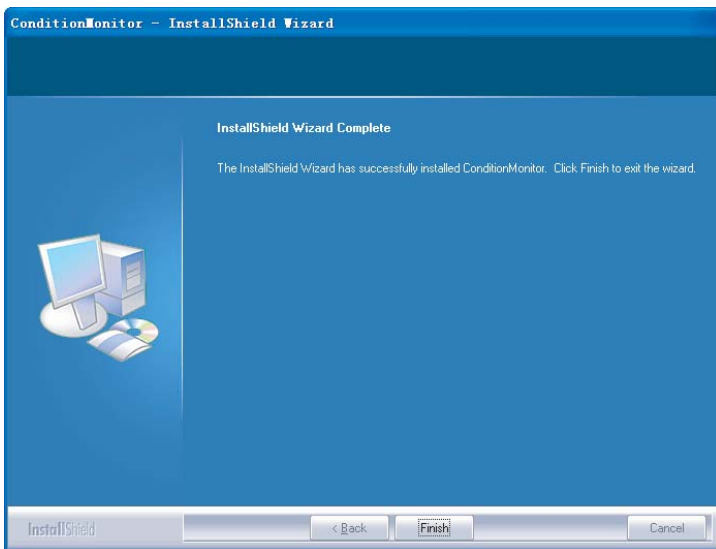


Fig.2-12