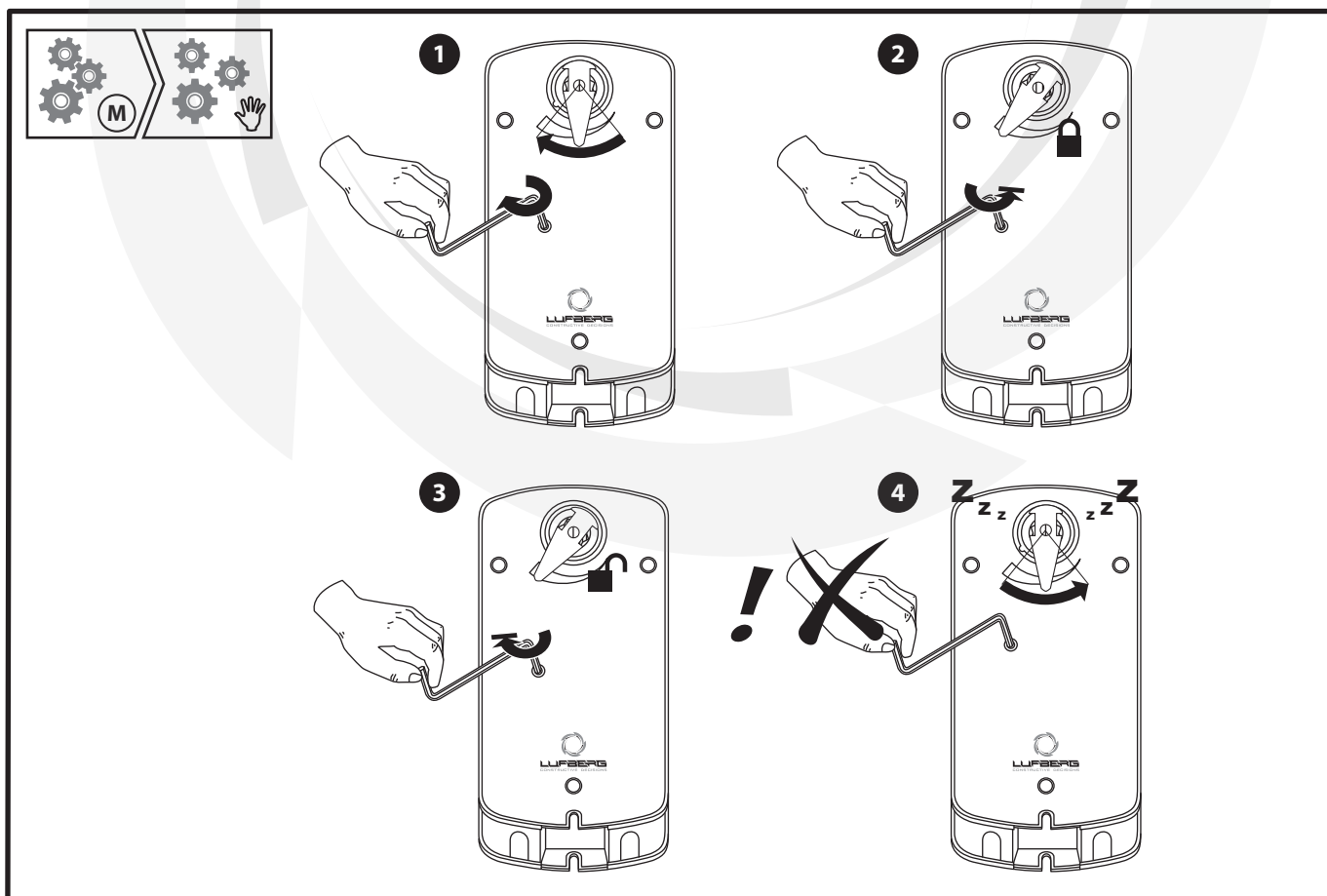
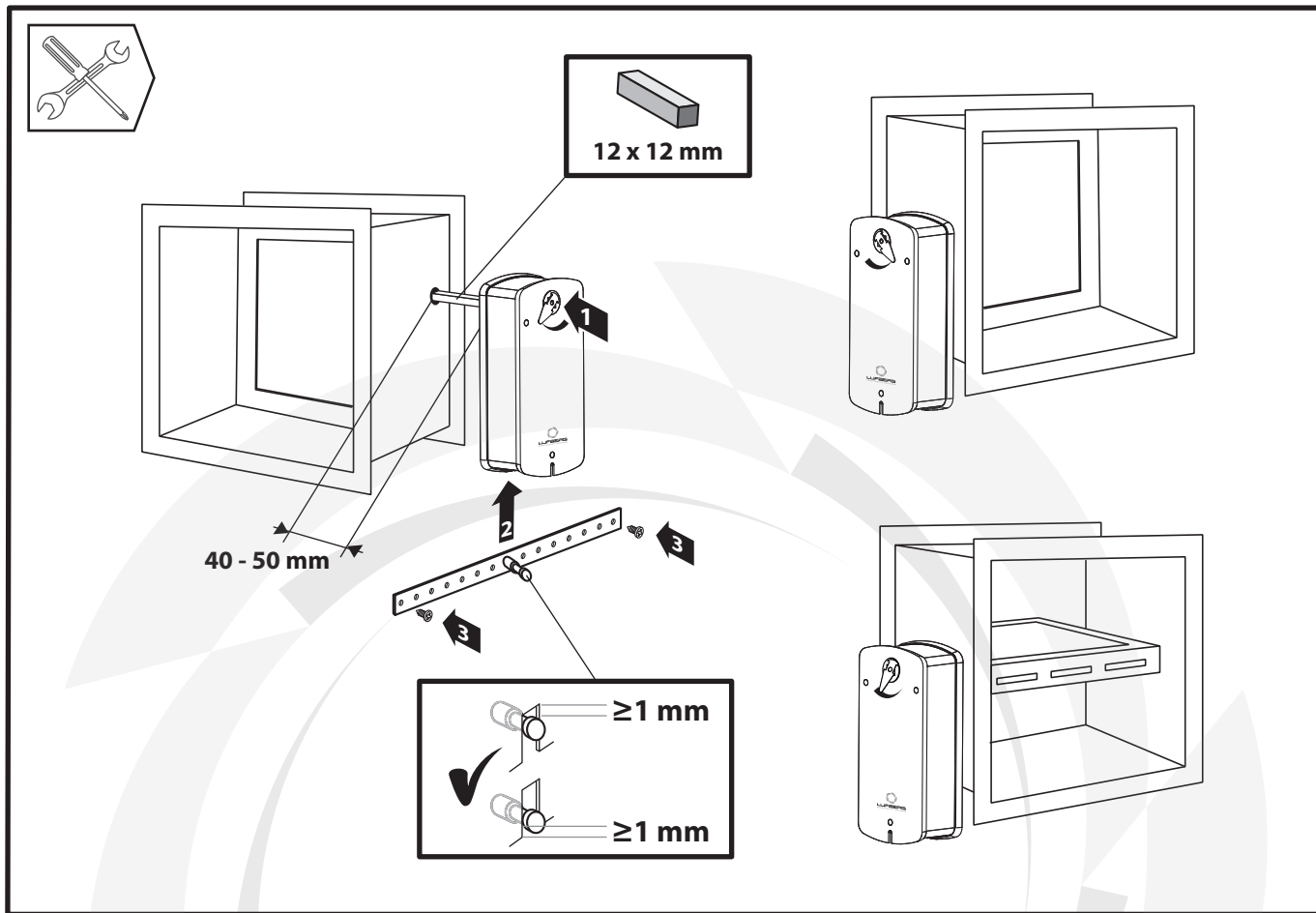




Actuator, Klappenstellantrieb, Электропривод, Servophonon

FS10S..., FS15S...

LUFBERG
CONSTRUCTIVE DECISIONS

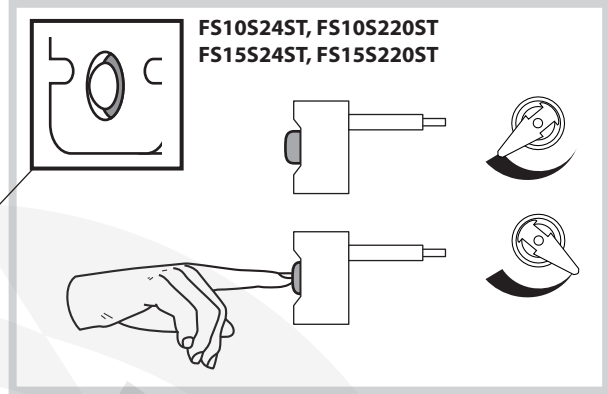
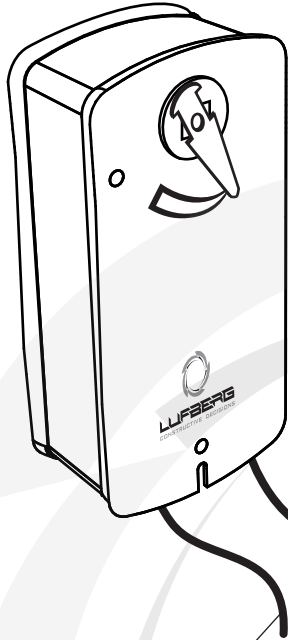
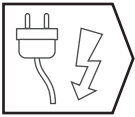


Actuator, Klappenstellantrieb, Электропривод, Servorohon

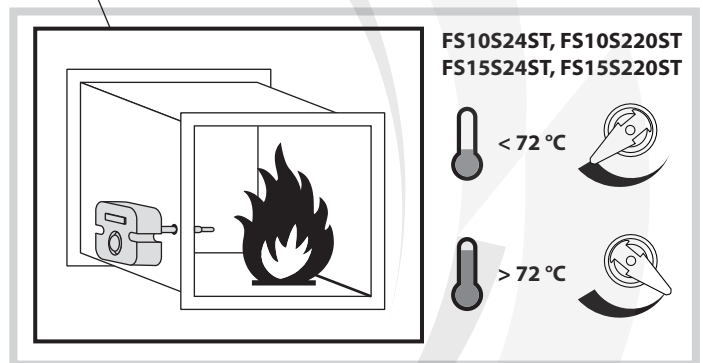
FS10S..., FS15S...



LUFBERG
CONSTRUCTIVE DECISIONS



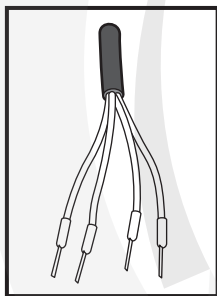
FS10S24ST, FS10S220ST
FS15S24ST, FS15S220ST



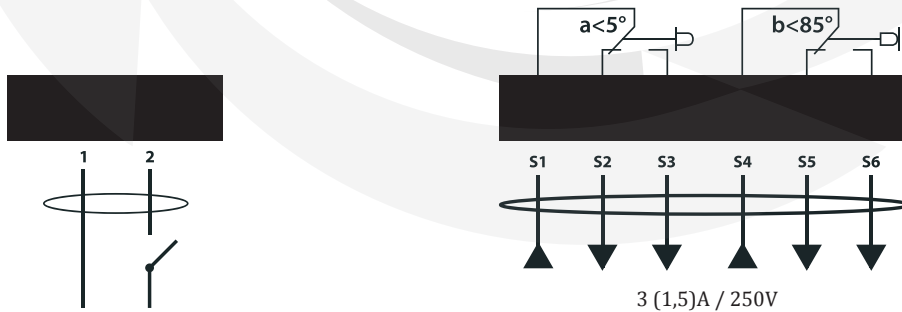
FS10S24ST, FS10S220ST
FS15S24ST, FS15S220ST

< 72 °C

> 72 °C



FS10S24S, FS10S24ST, FS10S220S, FS10S220ST
FS15S24S, FS15S24ST, FS15S220S, FS15S220ST,



⊥ ~ 24V AC ± 10 %
- + 24V DC ± 10 %
N L1 230V AC ± 10 %

3 (1,5)A / 250V

All rights reserved.
The company Lufberg reserves the right to change technical specifications of product without previous announcement.
On these product was issued Declaration of conformity in accordance with those directives: the Low Voltage Directive 2006/95/EC, the Electromagnetic Compatibility Directive 2004/108/EC and Machinery Directive 2006/42/EC

FS10S..., FS15S...

