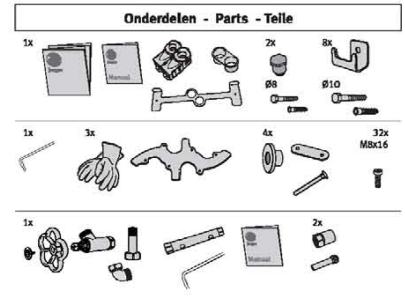
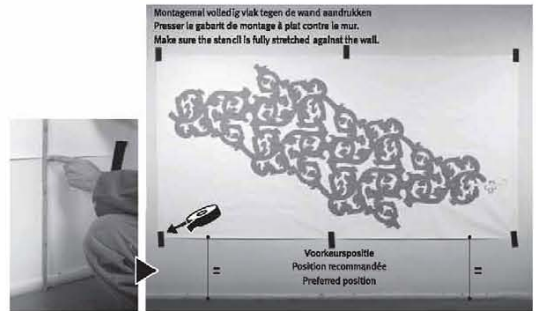
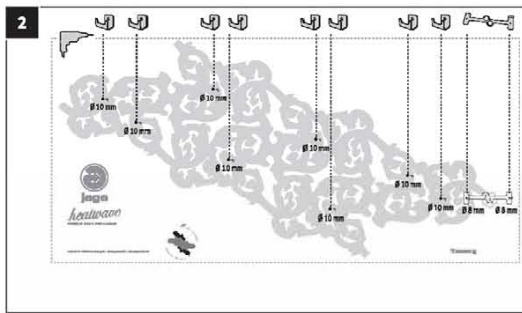
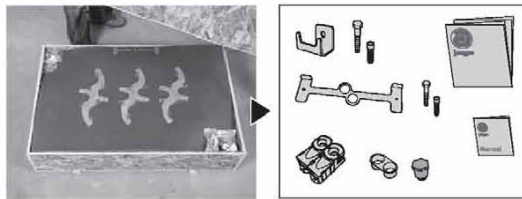


Het is mogelijk de Heatwave over een volledig bereik van 360° te monteren.
Il est possible de monter la Heatwave sur une portée complète de 360°.
It is possible to fix the Heatwave over a complete range of 360°.

De positie van de Heatwave in deze handleiding geniet de voorkeur van de ontwerper.
La position du Heatwave décrite dans ce manuel a la préférence du concepteur.
The position of the heatwave shown in the manual is the preferred position of the designer.

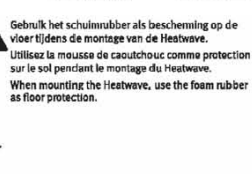
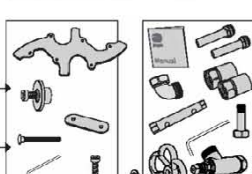
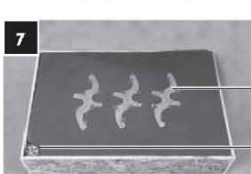
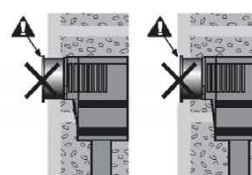
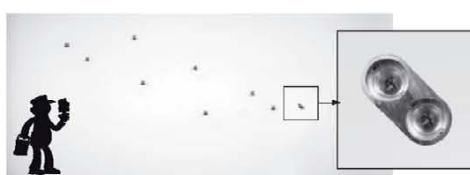
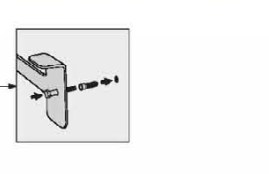
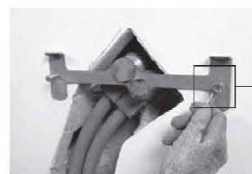
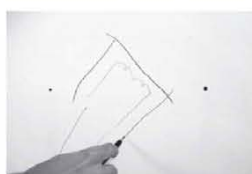
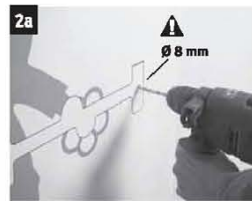


1. **Neem de montagehal, de onderdelen voor de muurbevestiging en de aansluiting uit de verpakking.**
Prenez le modèle de montage, les pièces pour la fixation murale et le raccordement dans l'emballage.
Remove the mounting model, the fixings and the valve connections from the packaging

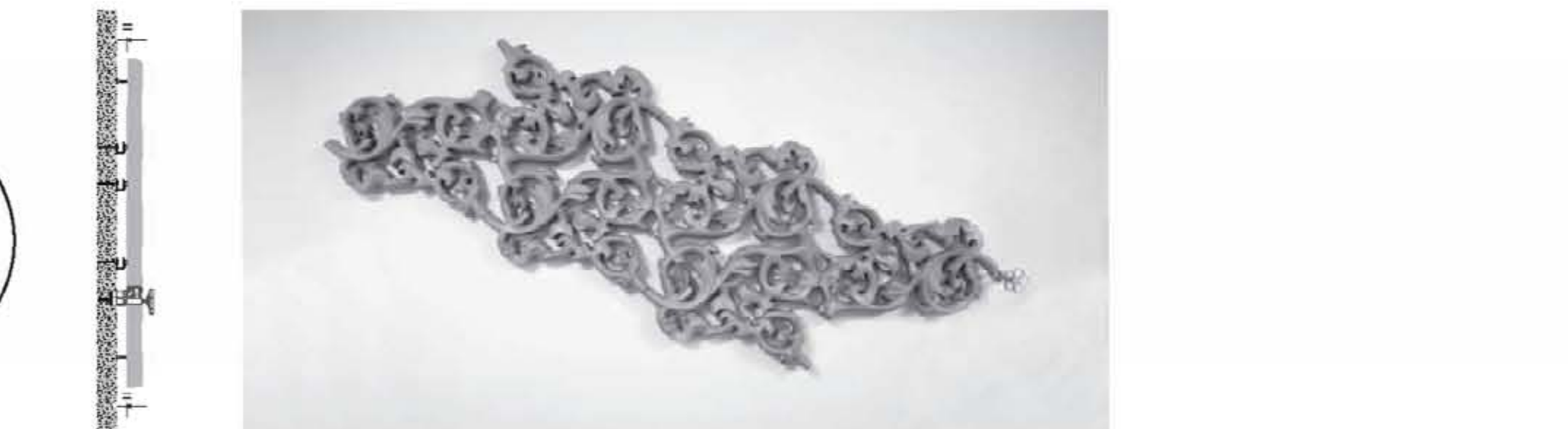
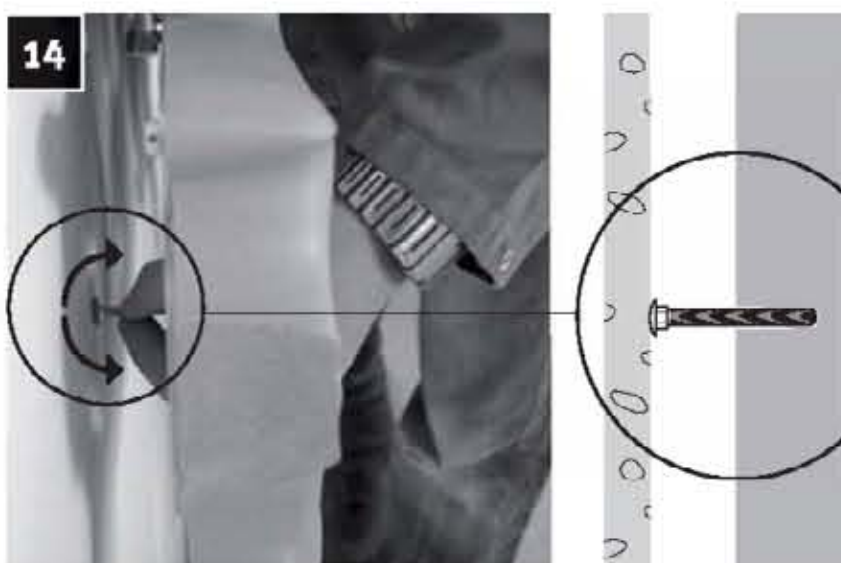
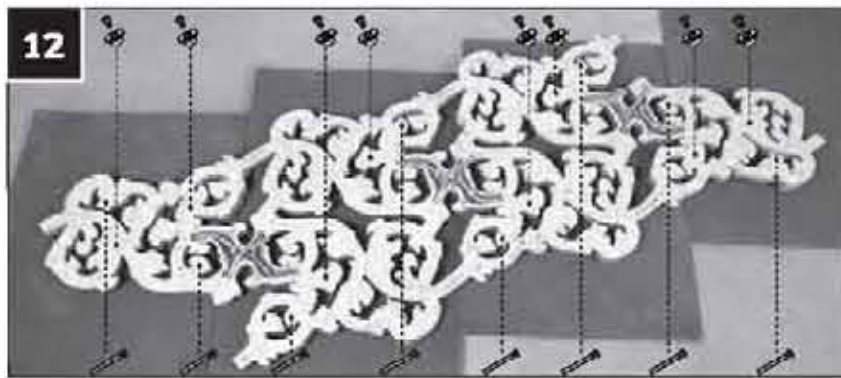
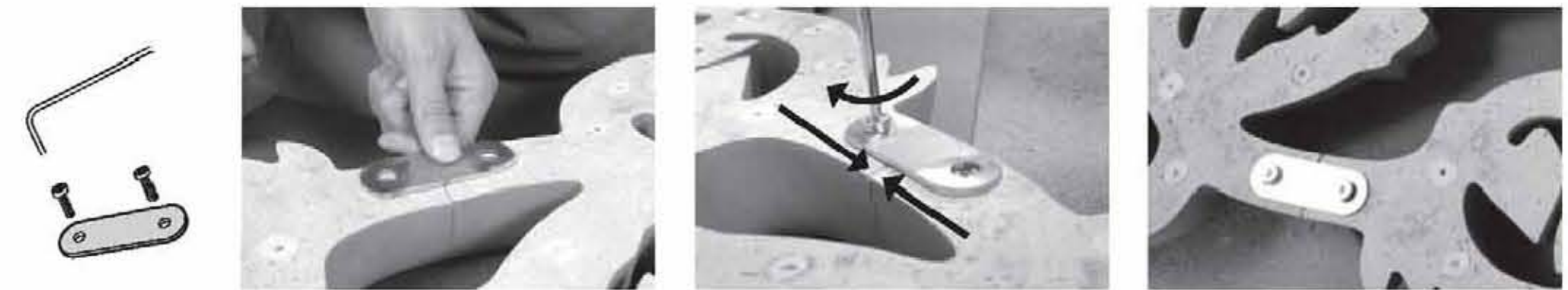
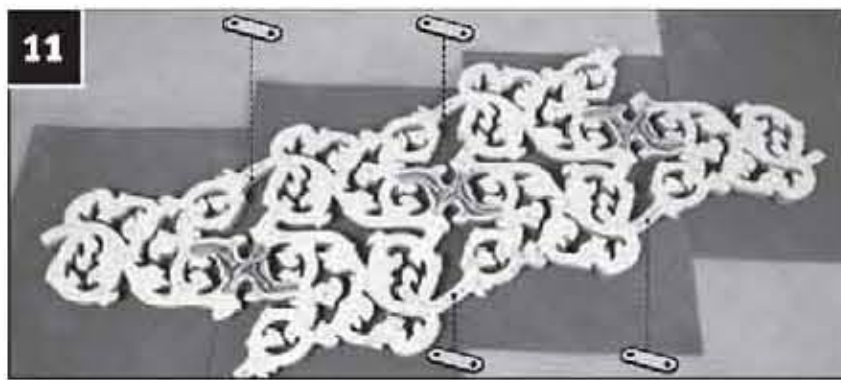
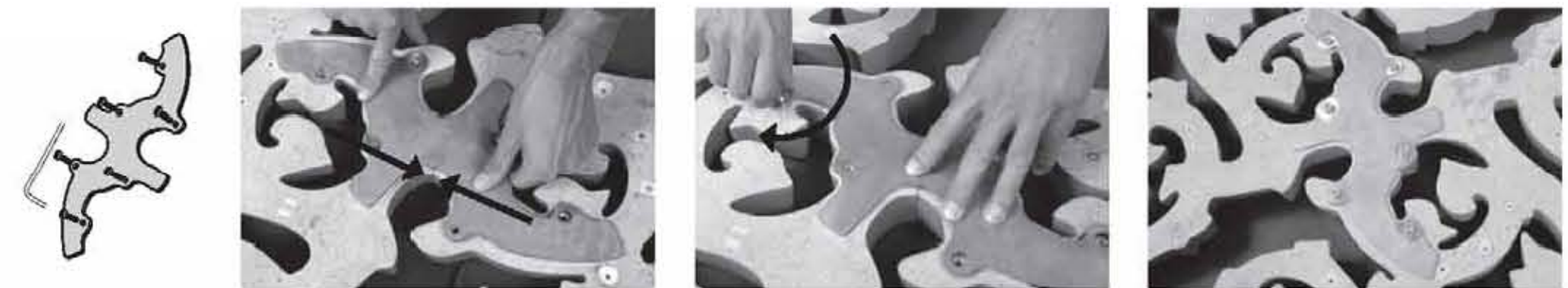
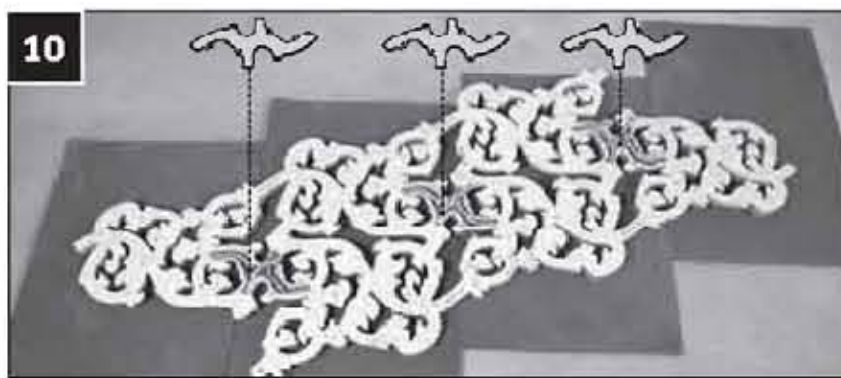
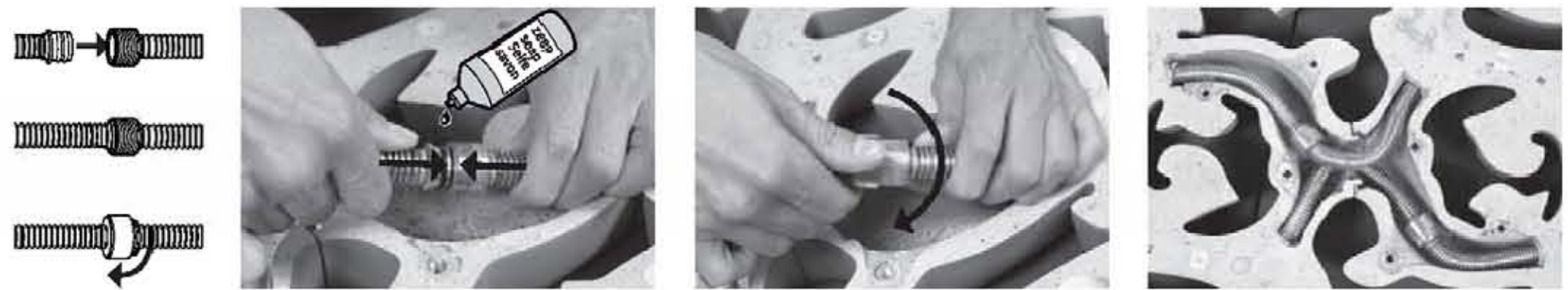
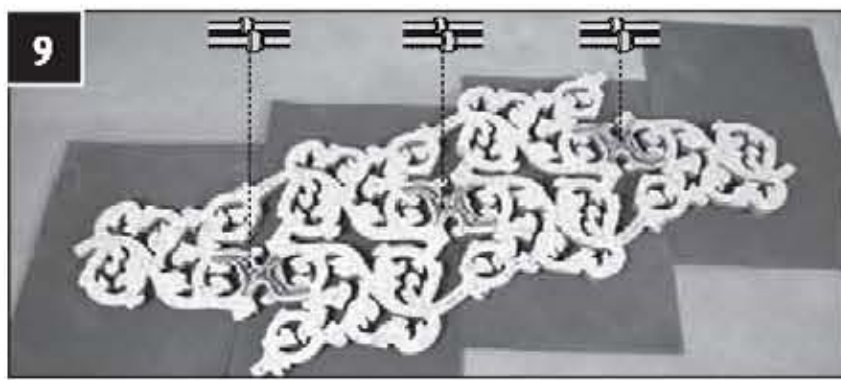
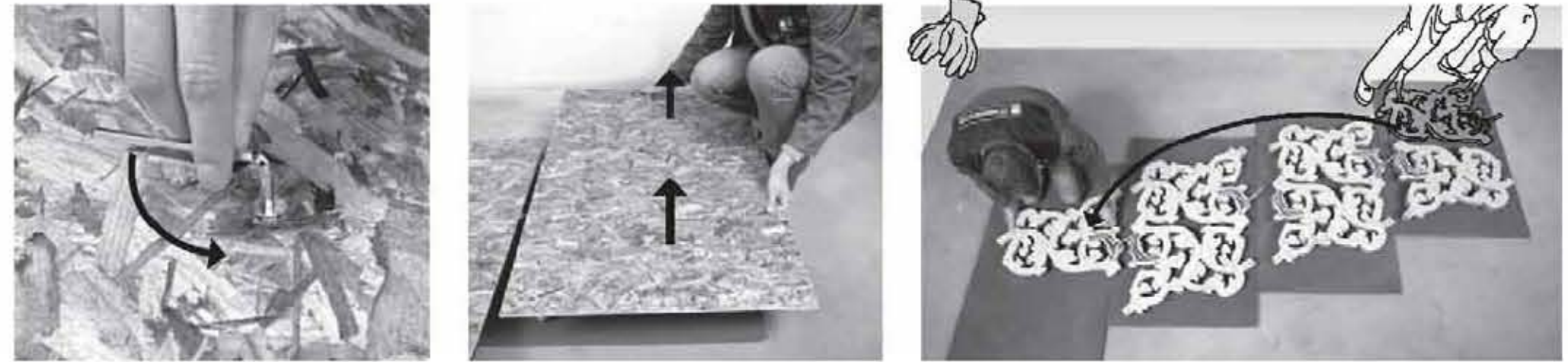
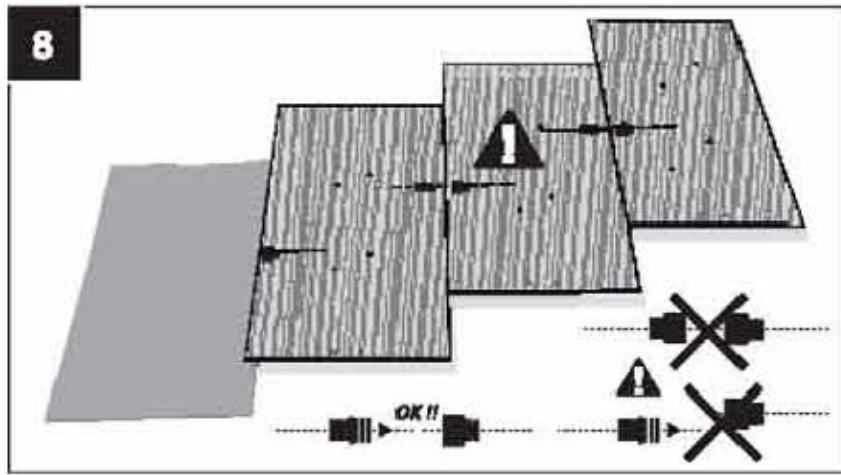


Montagehal volledig vlak tegen de wand aandrukken.
Presser le gabarit de montage à plat contre la mur.
Make sure the stencil is fully stretched against the wall.

Voorkeurspositie
Position recommandée
Preferred position



Gebruik het schuimrubber als bescherming op de vloer tijdens de montage van de Heatwave.
Utilisez la mousse de caoutchouc comme protection sur le sol pendant le montage du Heatwave.
When mounting the Heatwave, use the foam rubber as floor protection.



ontluchting - purge - Entlüftung - air venting

De ontluchting van de Heatwave gebeurt automatisch via de centrale ontluchter.
Tijdens het ontluchten moeten alle andere toestellen op hetzelfde circuit afgesloten worden.
La purge du Heatwave se déroule automatiquement par le biais du purgeur central. Pendant la purge, tous les autres appareils branchés sur le même circuit doivent être fermés.

Air venting of the Heatwave is done through the central air release vent.
Whilst purging is in progress ensure all other connections on the circuit as closed.

aansluiting - raccordement - Anschluß - connection

De montagehandleiding voor het monteren van de aansluiting bevindt zich in de verpakking van het ventiel.
Le manuel d'instruction pour le montage du raccordement se trouve dans l'emballage du ventilateur.

The connection set mounting instruction can be found in the valve packaging