



# Remote Controller (Wireless Type)

# INSTALLATION INSTRUCTION SHEET

(PART NO. 9366480013)

For authorized service personnel only.

<b>WARNING!</b>	This mark indicates procedures which, if improperly performed, might lead to the death or serious injury of the user.
<b>CAUTION!</b>	This mark indicates procedures which, if improperly performed, might possibly result in personal harm to the user, or damage to property.

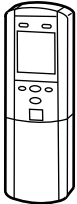

<b>WARNING</b>	
①	<b>For the air conditioner to operate satisfactorily, install it as outlined in this installation instruction sheet.</b>
②	<b>Installation work must be performed in accordance with national wiring standards by authorized personnel only.</b>
③	<b>Do not turn on the power until all installation work is complete.</b>

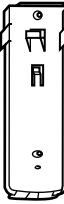

- Let the customer keep this installation instruction sheet because it is used when the air conditioner is serviced or moved.

<b>CAUTION</b>	
①	<b>Do not wire the bus wire together with or parallel to the indoor and outdoor units transmission cord and power cord. It may cause erroneous operation.</b>
②	<b>When installing the bus wire near a source of electromagnetic waves, use shielded wire.</b>
③	<b>Operating methods are the same as normal (1 air conditioner, 1 remote controller). For details, refer to operating manual.</b>
④	<b>Do not set either the dip switches or the rotary switches, either on the air conditioner or the remote controller, in any way other than indicated in this sheet or the operating manual that is supplied with the air conditioner. Do not change any switch settings in any way other than indicated. Doing so may result in an accident.</b>

## STANDARD PARTS

The following installation parts are supplied. Use them as required.

Name and Shape	Q'ty	Application
Remote control unit 	1	Use for air conditioner Operation
Battery (penlight) 	4	For remote control unit

	Q'ty	Application
Remote control unit holder 	1	Use as remote control unit holder
Tapping screw (ø3 × 12) 	3	For remote control unit holder installation

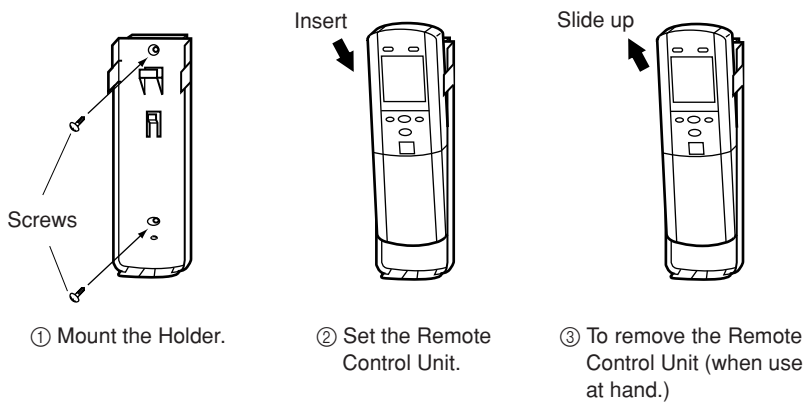
# REMOTE CONTROLLER INSTALLATION

## ⚠ CAUTION

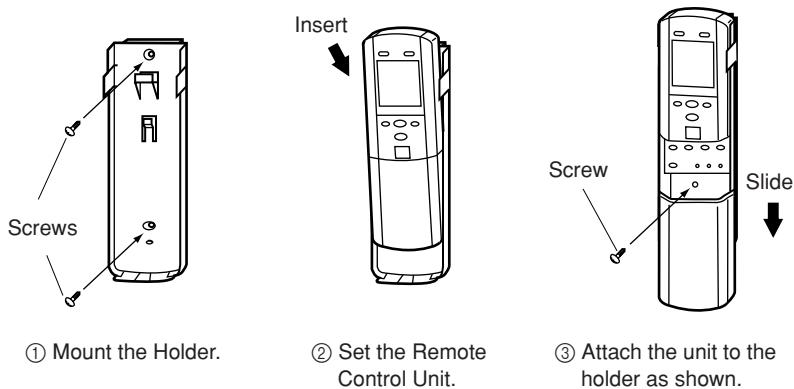
- ① Check that the indoor unit correctly receives the signal from the remote control unit, then install the remote control unit holder.
- ② Select the remote control unit holder selection site by paying careful attention to the following:  
**Avoid places in direct sunlight.**  
**Select a place that will not be affected by the heat from a stove, etc.**

Fig. 1

For use as Handy Type

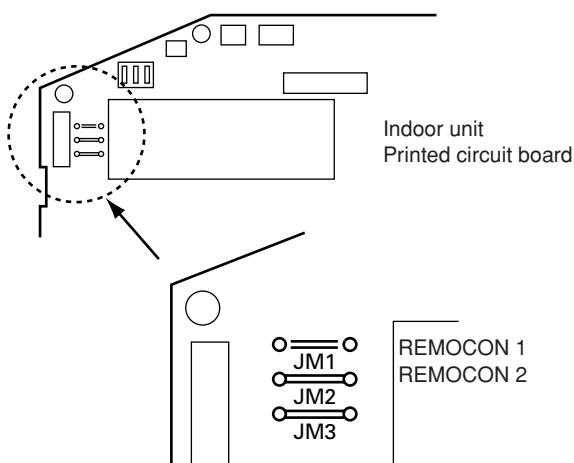


For use as Wall Fixing Type

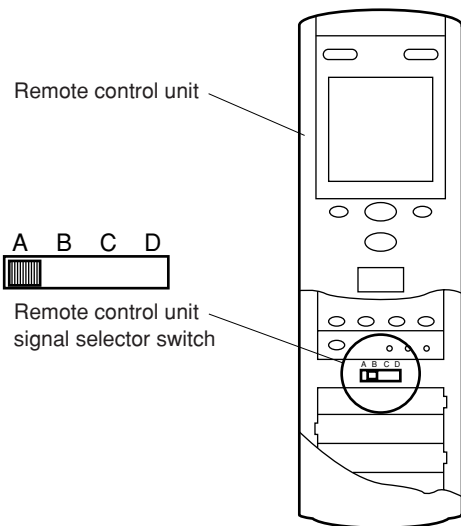


## REMOTE CONTROL UNIT CODE SWITCHING

Fig. 2



**Fig. 3**



Confirm the remote control unit signal selector switch selection and printed circuit board setting. If these are not confirmed, the remote control unit cannot be operated for the air conditioner.

**Table 1**

Jumper wire		Remote control unit signal selector switch
JM 1	JM 2	
Connect	Connect	A (Primary setting)
Disconnect	Connect	B
Connect	Disconnect	C
Disconnect	Disconnect	D