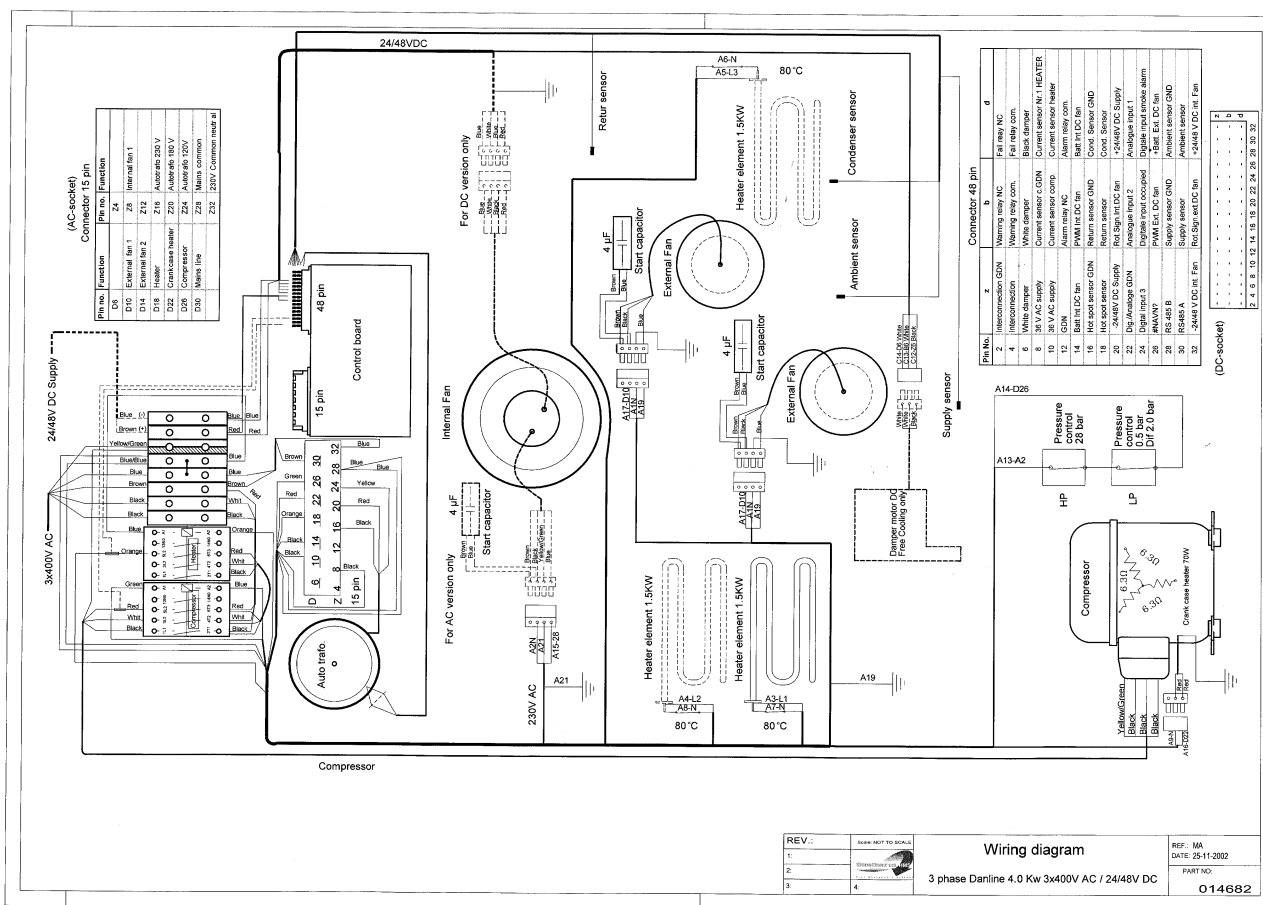


REV.: 1 Date NOT TO SCALE
 2
 3
 4

Wiring diagram

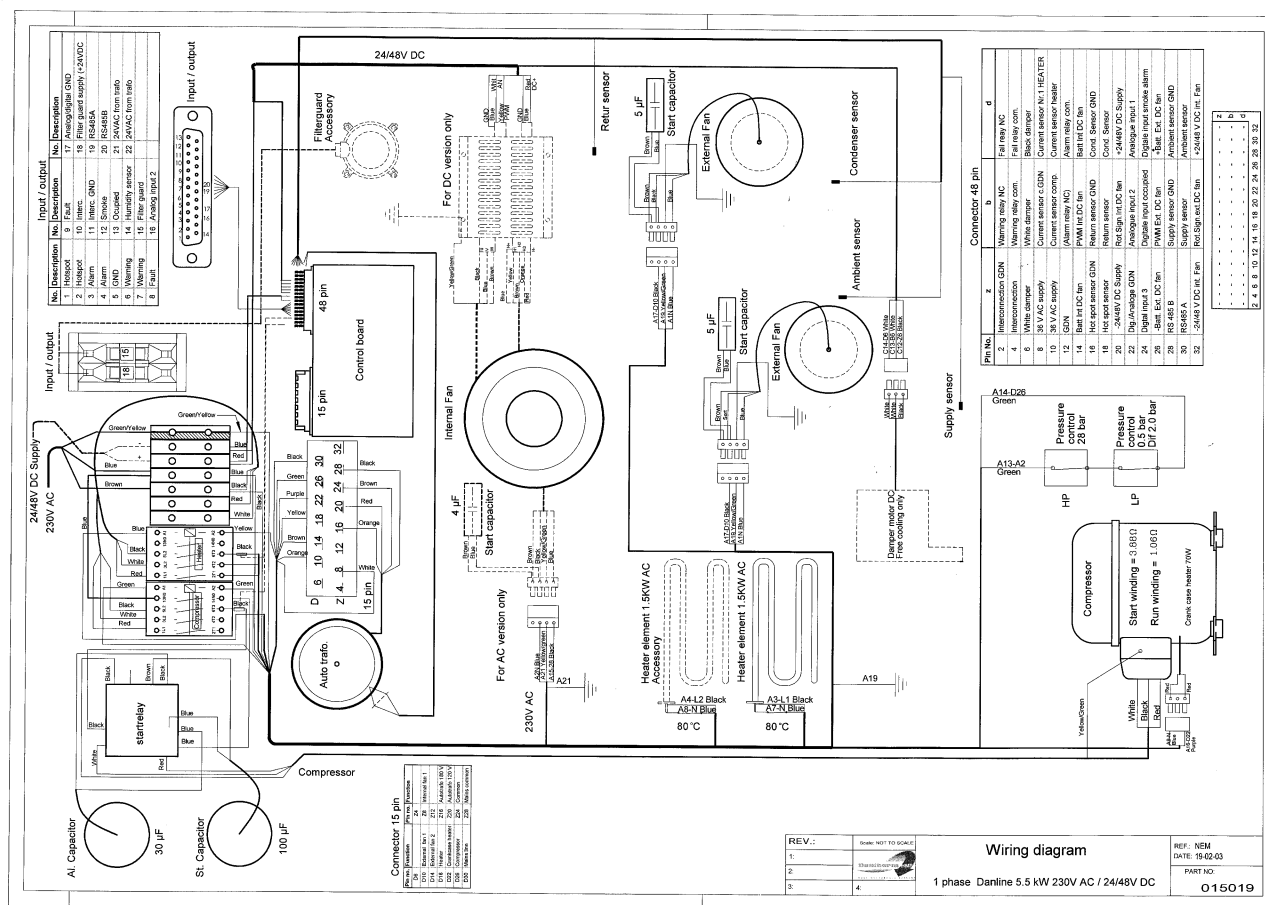
1 phase Danline 4.0 Kw 230V AC / 24/48V DC

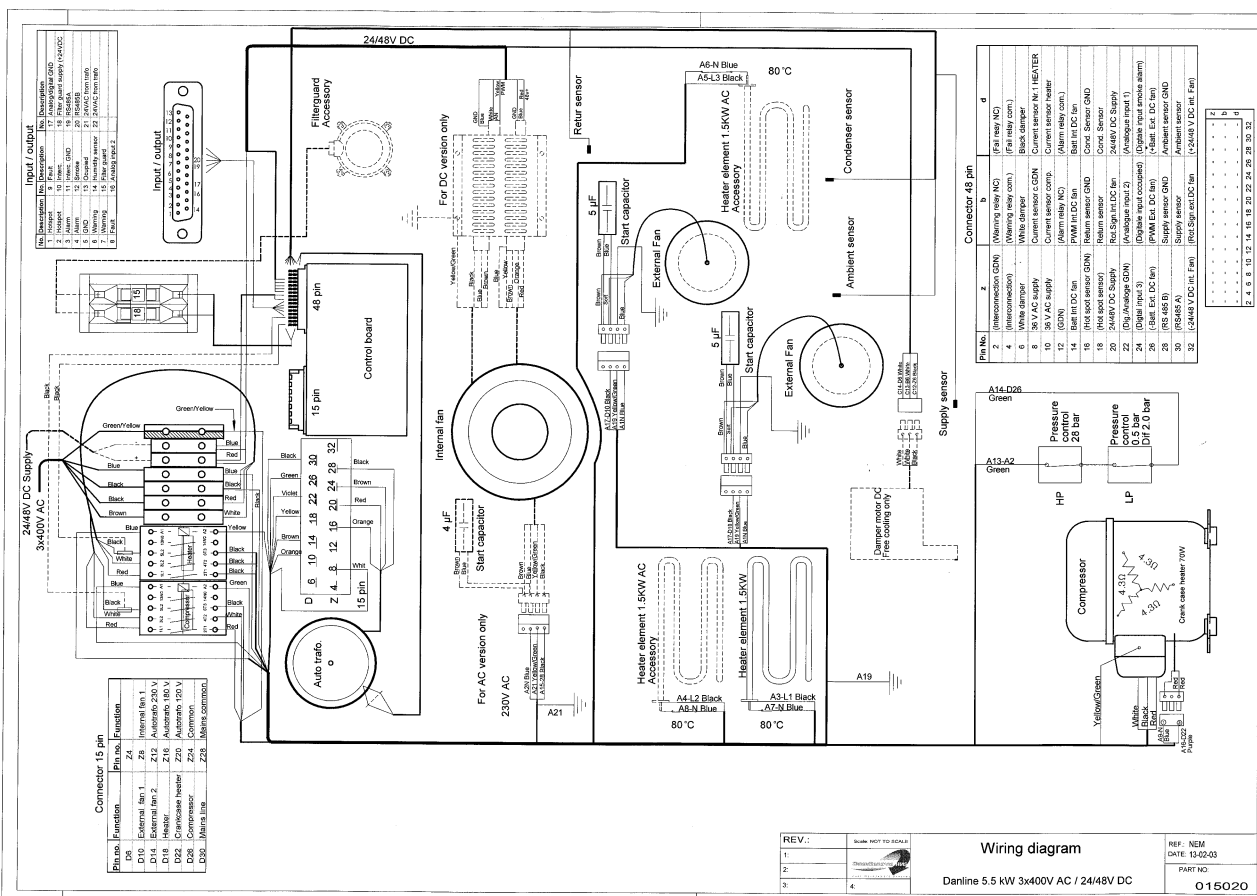
REF: MA
 DATE: 11-11-2002
 PART NO:
 014598



REV.	DATE	BY	CHK
1			
2			
3			
4			

REF: MA
DATE: 25-11-2002
PART NO:
014682



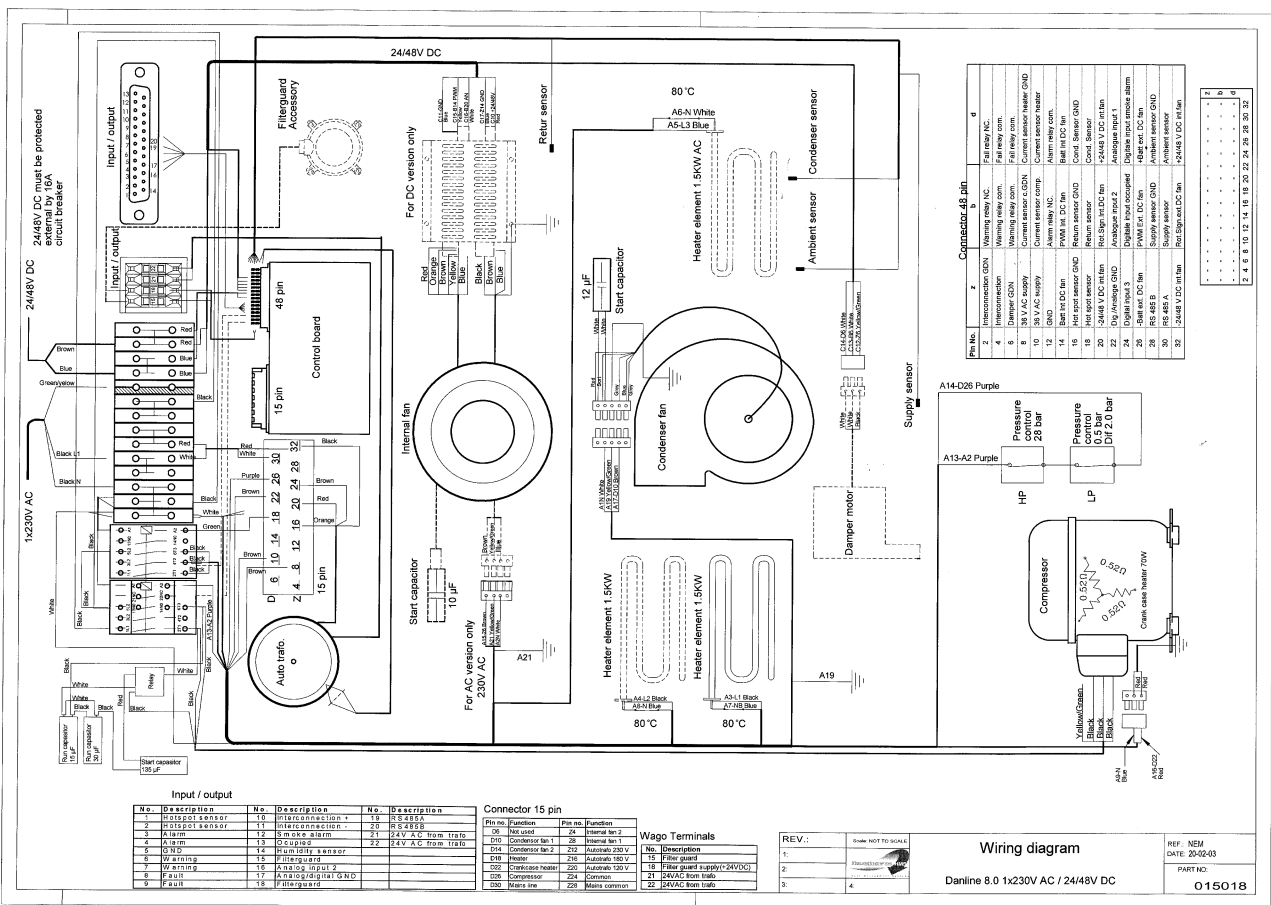


REV.:
1
2
3
4

Scale: NOT TO SCALE

Wiring diagram
Danline 5.5 kW 3x400V AC / 24/48V DC

REF: NEW
DATE: 13-02-03
PART NO:
O15020



No.	Description	No.	Description	No.	Description
1	High pressure sensor	10	Interconnection 1	20	R S 48B
2	High pressure sensor	11	Interconnection 2	21	R S 48B
3	Alarm	12	Supply alarm	22	24V AC from 17a/b
4	Alarm	13	Occupied	23	24V AC from 17a/b
5	Alarm	14	Run error	24	Common
6	Warning	15	Filter guard	25	Common
7	Warning	16	Analog input 2	26	Common
8	Warning	17	Analog digital GND	27	Common
9	Warning	18	Filter guard	28	Common

Pin No.	Function	Pin No.	Function
06	Not used	24	Internal fan 2
07	Condenser fan	25	Internal fan 1
08	Condenser fan	26	Internal fan 2
09	Heater	27	Internal fan 3
10	Compressor	28	Common
11	Compressor	29	Common
12	Compressor	30	Common
13	Compressor	31	Common
14	Compressor	32	Common

No.	Description
15	Filter guard
16	Filter guard supply (24VDC)
17	24VAC from 17a/b
18	24VAC from 17a/b
19	Common
20	24VAC from 17a/b
21	24VAC from 17a/b
22	24VAC from 17a/b
23	24VAC from 17a/b
24	24VAC from 17a/b
25	24VAC from 17a/b
26	24VAC from 17a/b
27	24VAC from 17a/b
28	24VAC from 17a/b
29	24VAC from 17a/b
30	24VAC from 17a/b
31	24VAC from 17a/b
32	24VAC from 17a/b

Pin No.	Function	Pin No.	Function
1	Interconnection GND	17	24VAC from 17a/b
2	Warning relay com.	18	24VAC from 17a/b
3	Warning relay com.	19	24VAC from 17a/b
4	Warning relay com.	20	24VAC from 17a/b
5	Warning relay com.	21	24VAC from 17a/b
6	Warning relay com.	22	24VAC from 17a/b
7	Warning relay com.	23	24VAC from 17a/b
8	Warning relay com.	24	24VAC from 17a/b
9	Warning relay com.	25	24VAC from 17a/b
10	Warning relay com.	26	24VAC from 17a/b
11	Warning relay com.	27	24VAC from 17a/b
12	Warning relay com.	28	24VAC from 17a/b
13	Warning relay com.	29	24VAC from 17a/b
14	Warning relay com.	30	24VAC from 17a/b
15	Warning relay com.	31	24VAC from 17a/b
16	Warning relay com.	32	24VAC from 17a/b

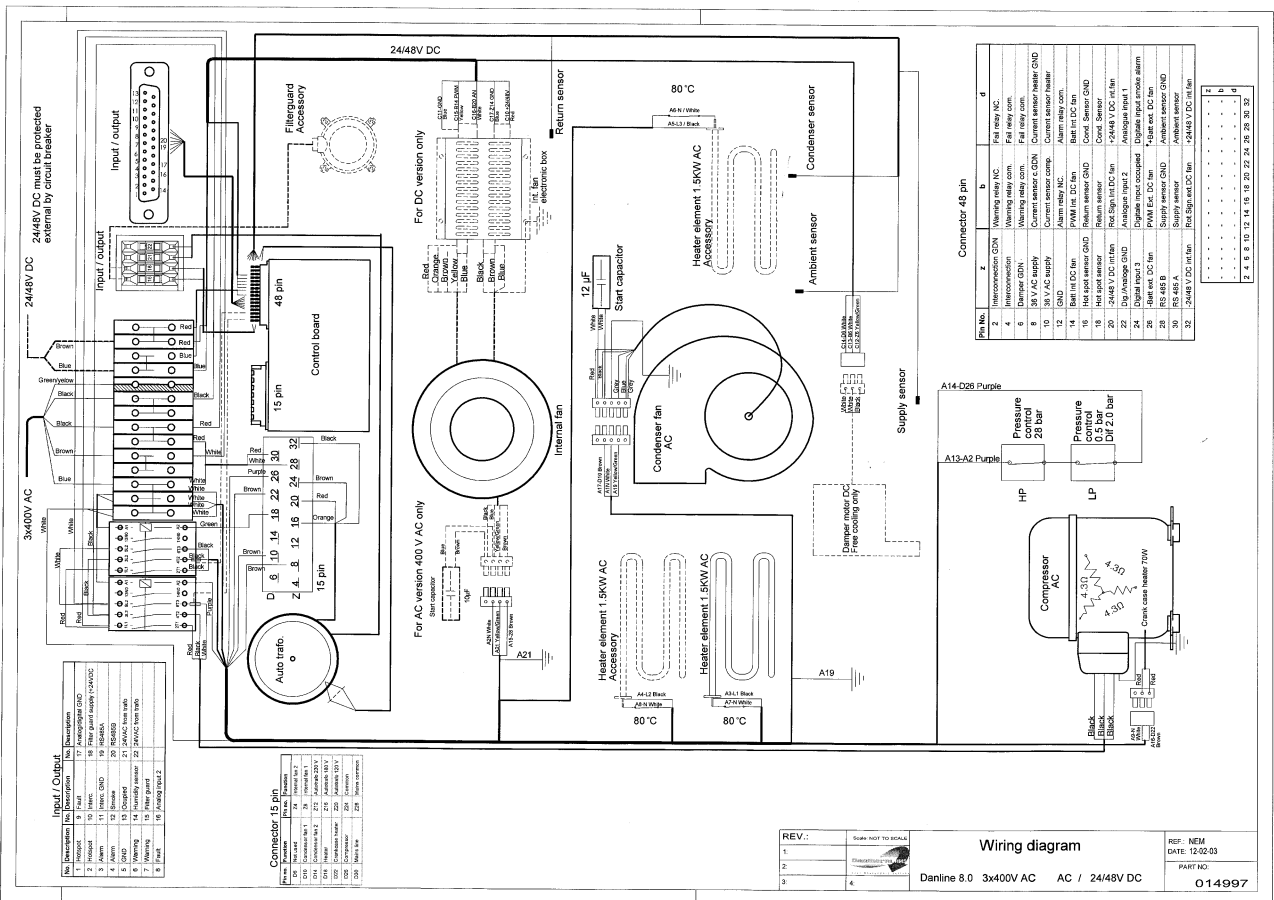
Pin No.	Function	Pin No.	Function
1	Interconnection GND	17	24VAC from 17a/b
2	Warning relay com.	18	24VAC from 17a/b
3	Warning relay com.	19	24VAC from 17a/b
4	Warning relay com.	20	24VAC from 17a/b
5	Warning relay com.	21	24VAC from 17a/b
6	Warning relay com.	22	24VAC from 17a/b
7	Warning relay com.	23	24VAC from 17a/b
8	Warning relay com.	24	24VAC from 17a/b
9	Warning relay com.	25	24VAC from 17a/b
10	Warning relay com.	26	24VAC from 17a/b
11	Warning relay com.	27	24VAC from 17a/b
12	Warning relay com.	28	24VAC from 17a/b
13	Warning relay com.	29	24VAC from 17a/b
14	Warning relay com.	30	24VAC from 17a/b
15	Warning relay com.	31	24VAC from 17a/b
16	Warning relay com.	32	24VAC from 17a/b

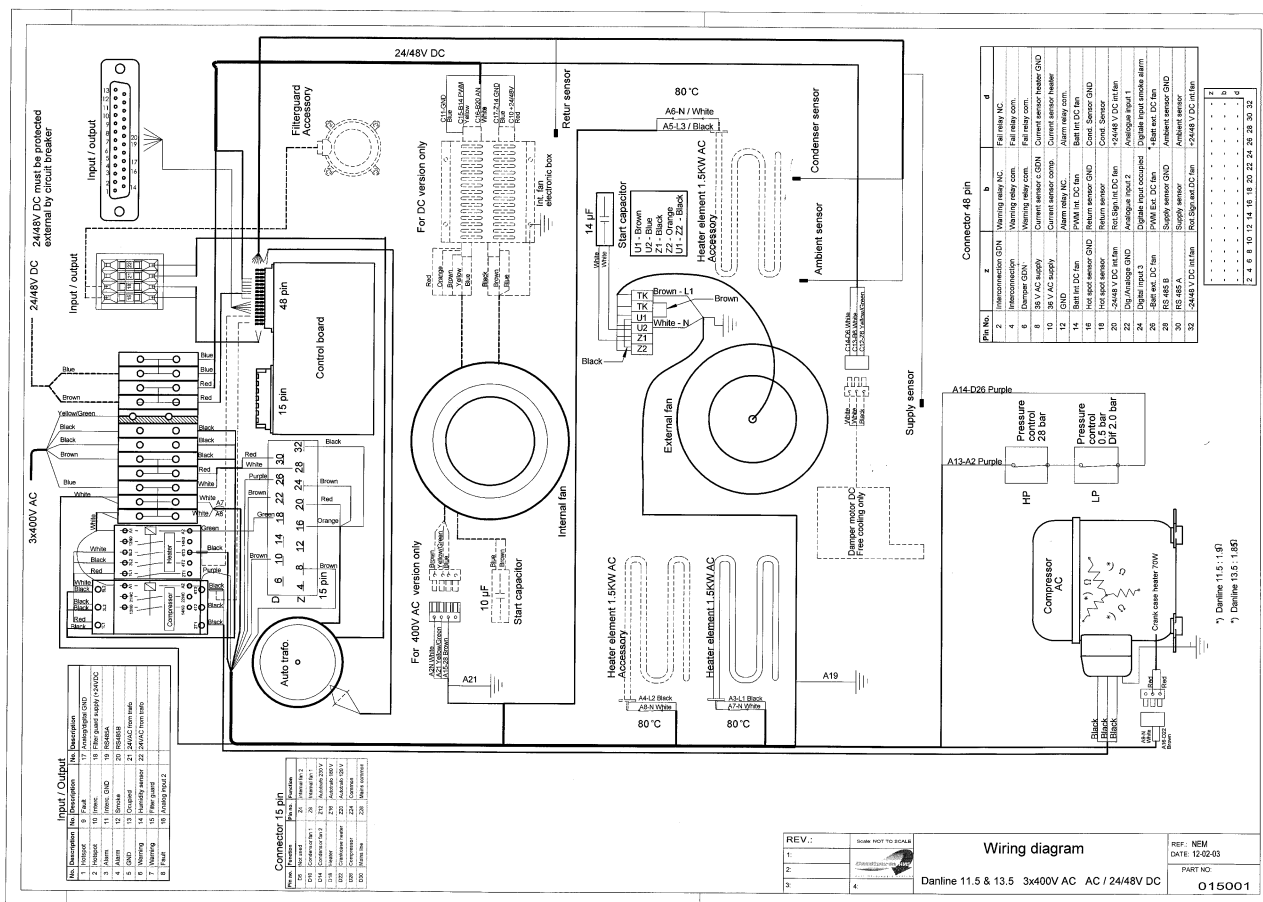
Pin No.	Function	Pin No.	Function
1	Interconnection GND	17	24VAC from 17a/b
2	Warning relay com.	18	24VAC from 17a/b
3	Warning relay com.	19	24VAC from 17a/b
4	Warning relay com.	20	24VAC from 17a/b
5	Warning relay com.	21	24VAC from 17a/b
6	Warning relay com.	22	24VAC from 17a/b
7	Warning relay com.	23	24VAC from 17a/b
8	Warning relay com.	24	24VAC from 17a/b
9	Warning relay com.	25	24VAC from 17a/b
10	Warning relay com.	26	24VAC from 17a/b
11	Warning relay com.	27	24VAC from 17a/b
12	Warning relay com.	28	24VAC from 17a/b
13	Warning relay com.	29	24VAC from 17a/b
14	Warning relay com.	30	24VAC from 17a/b
15	Warning relay com.	31	24VAC from 17a/b
16	Warning relay com.	32	24VAC from 17a/b

Wiring diagram
Danline 8.0 1x230V AC / 2448V DC

REV.:
1.
2.
3.
4.

REF. NEW
DATE: 00-02-03
PART NO.
015018





Input / Output

Pin No.	Function	Color
1	Interconnection	White
2	Interconnection GDN	Black
3	Warning relay com.	Yellow/Green
4	Warning relay NC	Black
5	Warning relay com.	Black
6	Warning relay NC	Black
7	Warning relay com.	Black
8	Warning relay NC	Black
9	Warning relay com.	Black
10	Warning relay NC	Black
11	Warning relay com.	Black
12	Warning relay NC	Black
13	Warning relay com.	Black
14	Warning relay NC	Black
15	Warning relay com.	Black
16	Warning relay NC	Black
17	Warning relay com.	Black
18	Warning relay NC	Black
19	Warning relay com.	Black
20	Warning relay NC	Black
21	Warning relay com.	Black
22	Warning relay NC	Black
23	Warning relay com.	Black
24	Warning relay NC	Black
25	Warning relay com.	Black
26	Warning relay NC	Black
27	Warning relay com.	Black
28	Warning relay NC	Black
29	Warning relay com.	Black
30	Warning relay NC	Black
31	Warning relay com.	Black
32	Warning relay NC	Black

Connectors 15 pin

Pin No.	Function	Color
1	Interconnection	White
2	Interconnection GDN	Black
3	Warning relay com.	Yellow/Green
4	Warning relay NC	Black
5	Warning relay com.	Black
6	Warning relay NC	Black
7	Warning relay com.	Black
8	Warning relay NC	Black
9	Warning relay com.	Black
10	Warning relay NC	Black
11	Warning relay com.	Black
12	Warning relay NC	Black
13	Warning relay com.	Black
14	Warning relay NC	Black
15	Warning relay com.	Black

Connector 48 pin

Pin No.	Function	Color
1	Interconnection	White
2	Interconnection GDN	Black
3	Warning relay com.	Yellow/Green
4	Warning relay NC	Black
5	Warning relay com.	Black
6	Warning relay NC	Black
7	Warning relay com.	Black
8	Warning relay NC	Black
9	Warning relay com.	Black
10	Warning relay NC	Black
11	Warning relay com.	Black
12	Warning relay NC	Black
13	Warning relay com.	Black
14	Warning relay NC	Black
15	Warning relay com.	Black
16	Warning relay NC	Black
17	Warning relay com.	Black
18	Warning relay NC	Black
19	Warning relay com.	Black
20	Warning relay NC	Black
21	Warning relay com.	Black
22	Warning relay NC	Black
23	Warning relay com.	Black
24	Warning relay NC	Black
25	Warning relay com.	Black
26	Warning relay NC	Black
27	Warning relay com.	Black
28	Warning relay NC	Black
29	Warning relay com.	Black
30	Warning relay NC	Black
31	Warning relay com.	Black
32	Warning relay NC	Black

REV. 1.1
 1
 2
 3
 4

Scale: REF: 10:1

Wiring diagram

Danline 11.5 & 13.5 3x400V AC AC / 24/48V DC

REF: NEM
 DATE: 12/2013

PART NO.
015001