

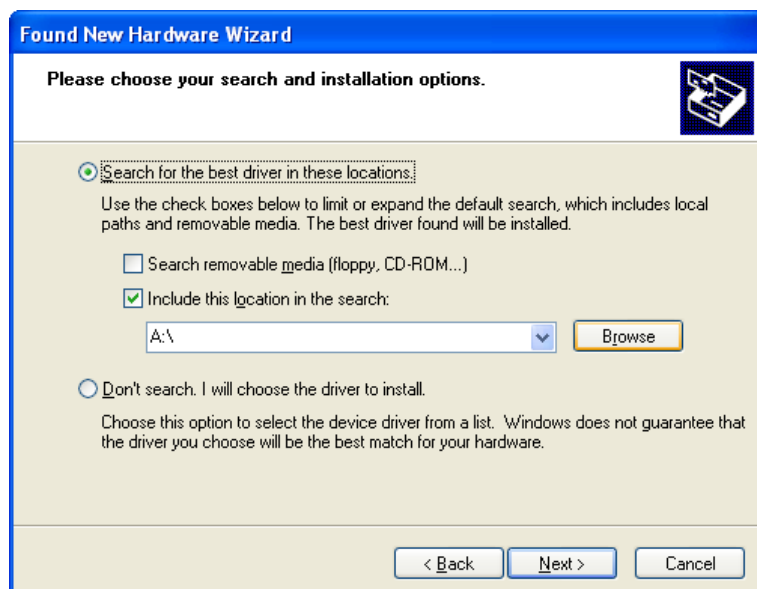
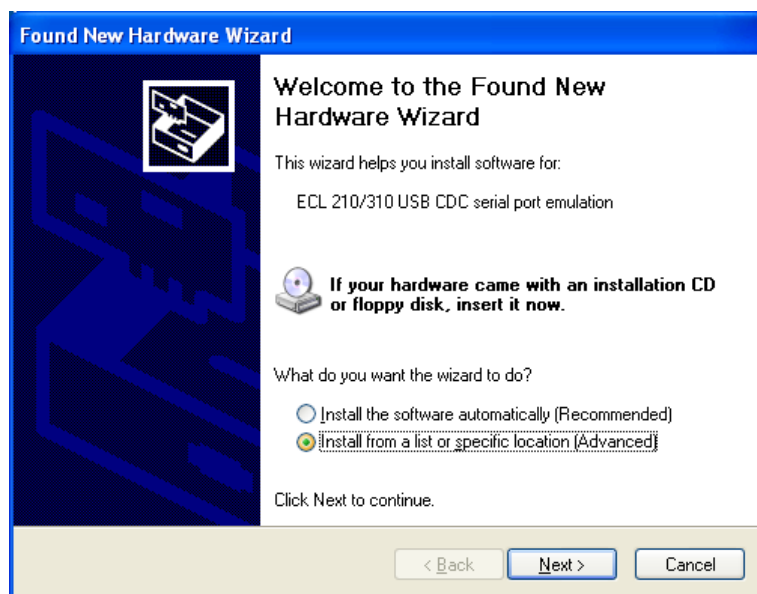
Instructions

This description is only intended for use in connection with ECL Comfort 210/310

USB driver installation guide


Connecting the ECL to the PC the first time

The ECL USB connection uses a special driver. When Windows detects ECL the first time, you will be prompted for a driver installation.



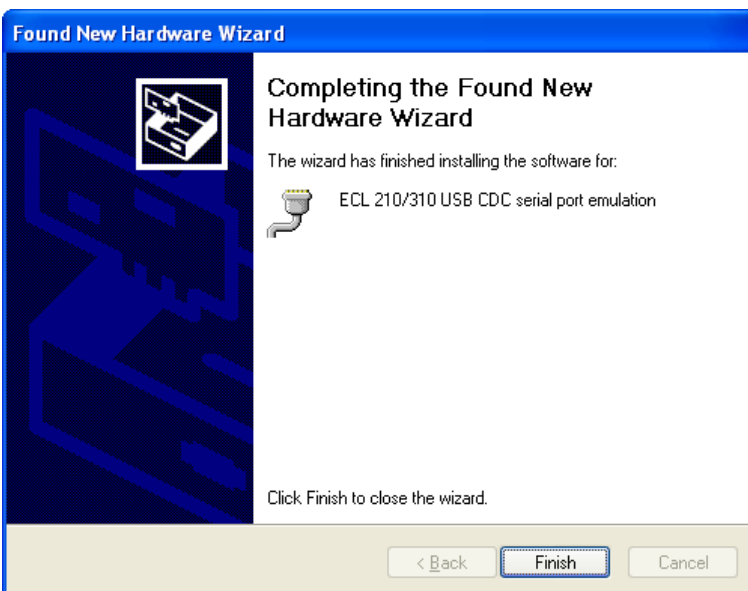
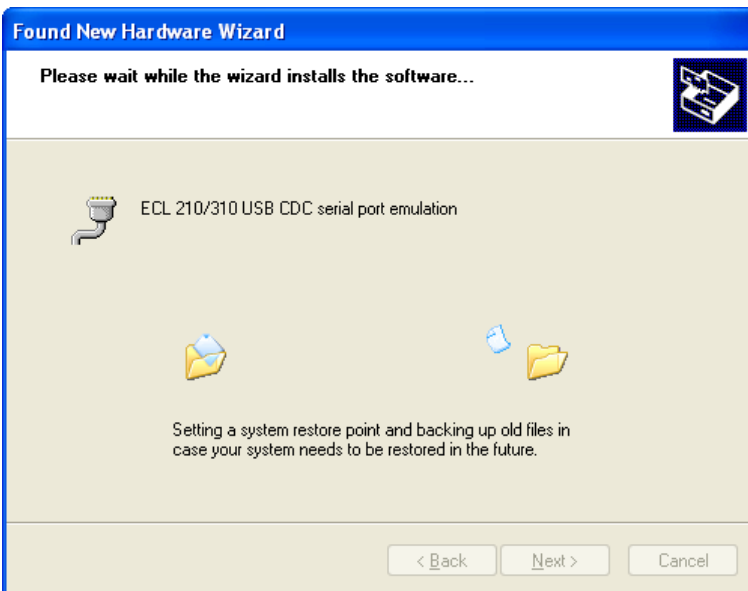
Select the Danfoss driver (Folder ..\USB_driver) and press "Next".

Instructions

 This description is only intended for use in connection with ECL Comfort 210/310



Press "Continue Anyway".



Instructions



This description is only intended for use in connection with ECL Comfort 210/310

The ECL USB driver is now installed and the ECL should be visible in the Windows Device Manager.

