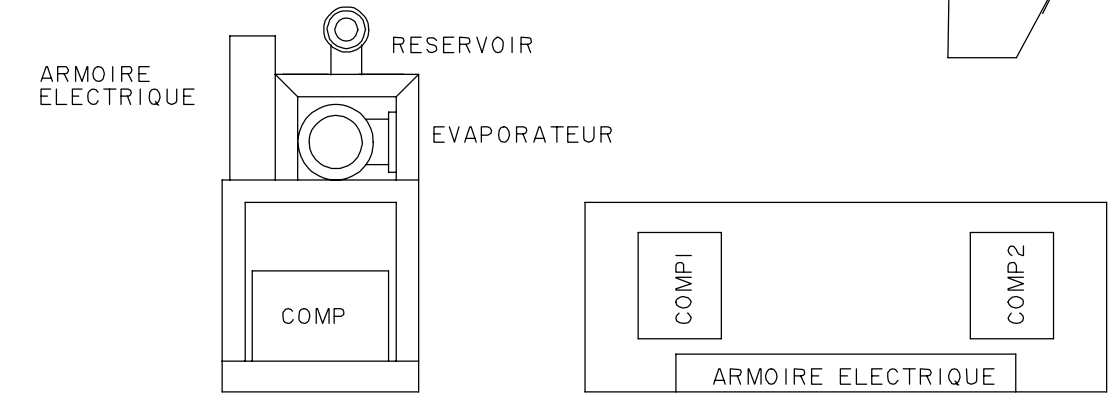
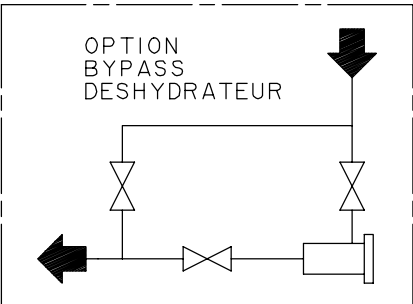


DEMARRAGE A VIDE POUR  
OPTION PART-WINDING  
OU ETOILE TRIANGLE



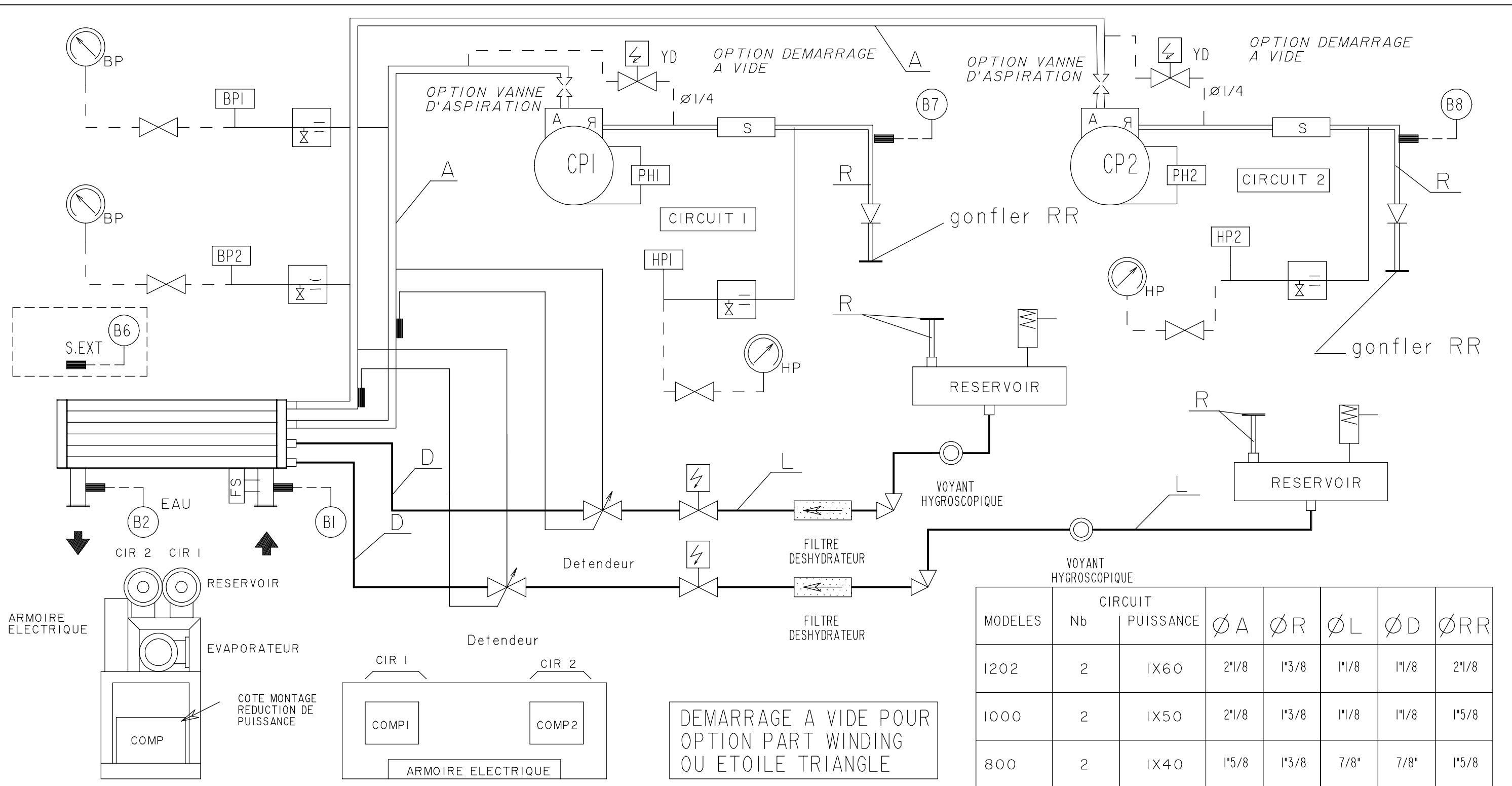
IMPLANTATION MATERIEL

MODELES	RESERVOIR	EVAPORATEUR
1202	90H	FYN 273 20 4B 4II
1000	90H	FYN 273 20 4B 4II
800	60H	FYN 273 20 4B 4II
700	60H	FYN 273 20 4B 4II



MODELES	PUISSANCE	Ø A	Ø A'	Ø R	Ø R'	Ø D	Ø RR	Ø L
1202	2X60	2"5/8	2"1/8	2"1/8	1"3/8	1"3/8	2"5/8	1"3/8
1000	2X50	2"5/8	2"1/8	2"1/8	1"3/8	1"3/8	2"1/8	1"1/8
800	2X40	2"1/8	1"5/8	1"5/8	1"3/8	1"1/8	2"1/8	1"1/8
700	2X35	2"1/8	1"5/8	1"5/8	1"1/8	1"1/8	2"1/8	1"1/8

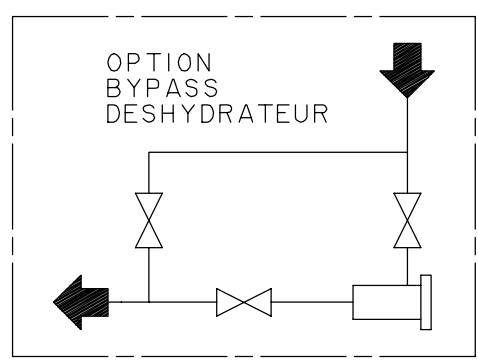
PG	34	22.03.00	2 PRESSOSTATS HP
MODIFIE PAR	IND	N.ETUDE	DATE
		APPAREIL OU UNITE LRN 700 A 1202	
DESIGNATION SCHEMA FRIGORIFIQUE 2 COMPRESSEURS - 1 CIRCUIT		MATIERE:	
NUMERO DE COMMANDE:		ECHELLE TRAITEMENT	
NOTE D'ETUDE:		FOLIO 1/1	
VERIFIE PAR:		REMPLACE PAR:	
DESSIN PAR: JP		REMPLACE:	
DATE: 20/01/94		FORMAT A3	
DATE:		NUMERO DE PLAN 3956104	
DATE:		INDICE 34	



ARMOIRE ELECTRIQUE

IMPLANTATION MATERIEL

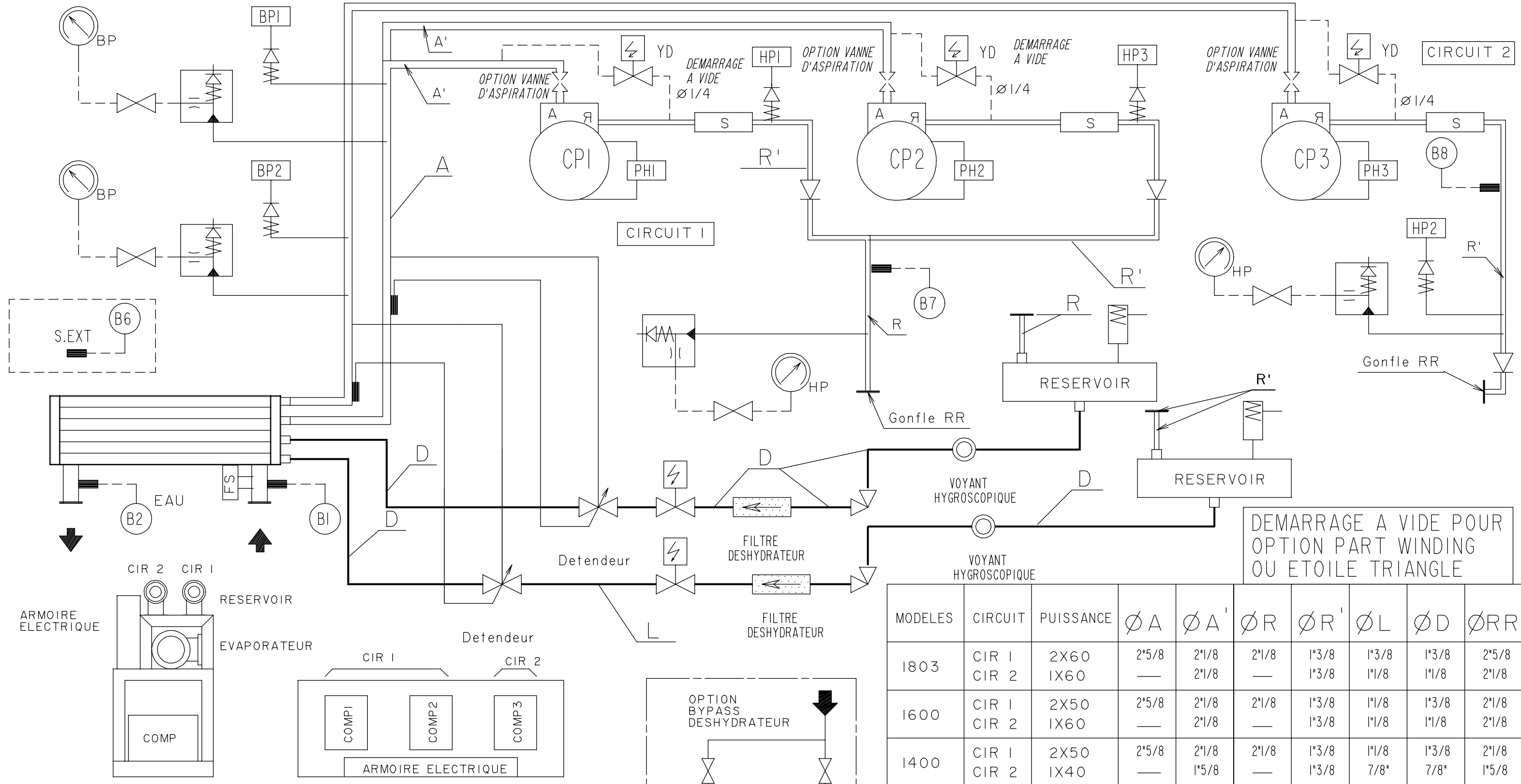
MODELES	RESERVOIR	EVAPORATEUR
1202	60 H	FYN 273.20.222
1000	60 H	FYN 273.20.222
800	40 H	FYN 273.20.222
700	40 H	FYN 273.20.222



DEMARRAGE A VIDE POUR  
OPTION PART WINDING  
OU ETOILE TRIANGLE

MODELES	CIRCUIT		Ø A	Ø R	Ø L	Ø D	Ø RR
	Nb	PUISSANCE					
1202	2	1X60	2 1/8	1 3/8	1 1/8	1 1/8	2 1/8
1000	2	1X50	2 1/8	1 3/8	1 1/8	1 1/8	1 5/8
800	2	1X40	1 5/8	1 3/8	7/8"	7/8"	1 5/8
700	2	1X35	1 5/8	1 1/8	7/8"	7/8"	1 5/8

PG 33	01.12.98	CLAPETS SUR REFOULEMENT
MODIFIE PAR IND N.ETUDE	DATE	MODIFICATION
		APPAREIL OU UNITE LRN 700 A 1202
DESIGNATION SCHEMA FRIGORIFIQUE 2 COMPRESSEURS 2 CIRCUITS		MATIERE: TRAITEMENT MASSE: REMPLACE PAR: REMPLACE:
NUMERO DE COMMANDE: NOTE D'ETUDE: DATE: VERIFIE PAR: DATE: DESSIN PAR: SC DATE:25-03-92		ECHELLE FOLIO 1/1 FORMAT A3
		NUMERO DE PLAN 3955963
		INDICE 33

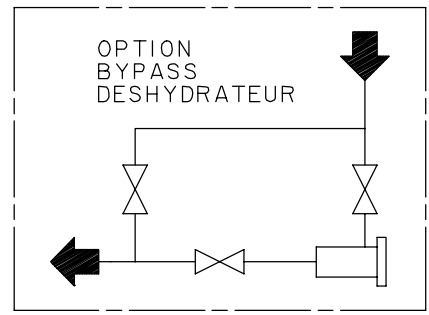


DEMARRAGE A VIDE POUR  
OPTION PART WINDING  
OU ETOILE TRIANGLE

MODELES	CIRCUIT	PUISSANCE	Ø A	Ø A'	Ø R	Ø R'	Ø L	Ø D	Ø RR
1803	CIR 1	2X60	2 5/8	2 1/8	2 1/8	1 3/8	1 3/8	1 3/8	2 5/8
	CIR 2	1X60	—	2 1/8	—	1 3/8	1 1/8	1 1/8	2 1/8
1600	CIR 1	2X50	2 5/8	2 1/8	2 1/8	1 3/8	1 1/8	1 3/8	2 1/8
	CIR 2	1X60	—	2 1/8	—	1 3/8	1 1/8	1 1/8	2 1/8
1400	CIR 1	2X50	2 5/8	2 1/8	2 1/8	1 3/8	1 1/8	1 3/8	2 1/8
	CIR 2	1X40	—	1 5/8	—	1 3/8	7/8"	7/8"	1 5/8
1203	CIR 1	2X40	2 1/8	1 5/8	1 5/8	1 3/8	1 1/8	1 1/8	2 1/8
	CIR 2	1X40	—	1 5/8	—	1 3/8	7/8"	7/8"	1 5/8

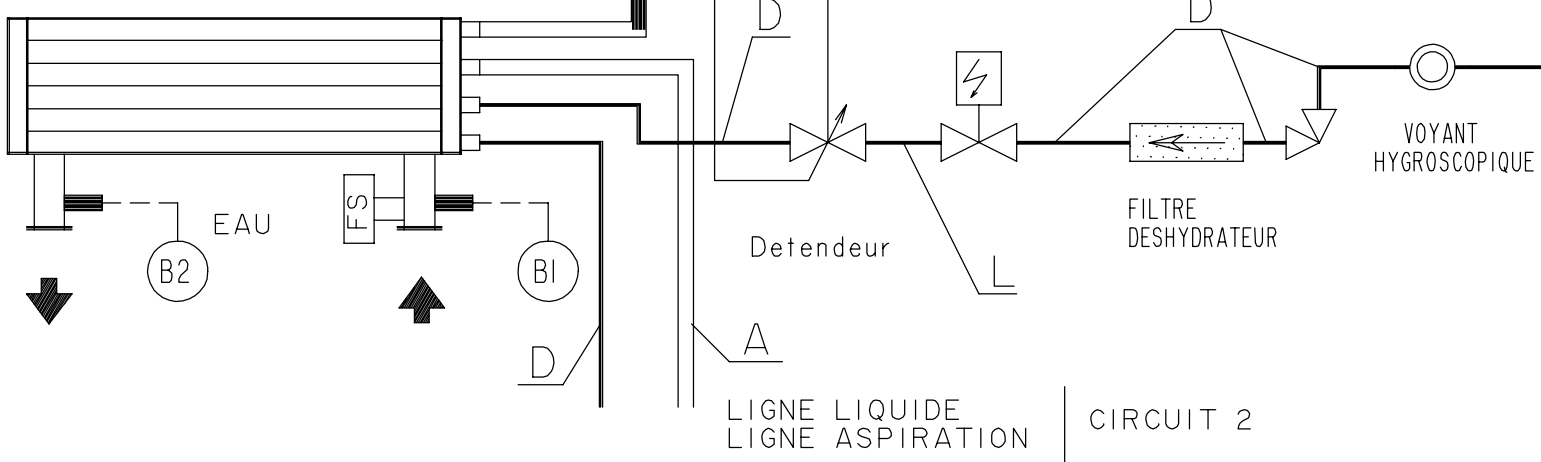
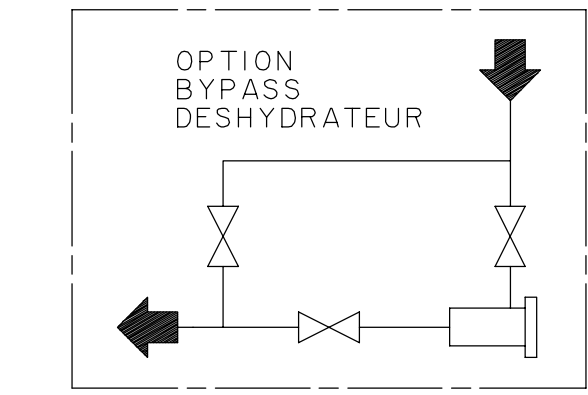
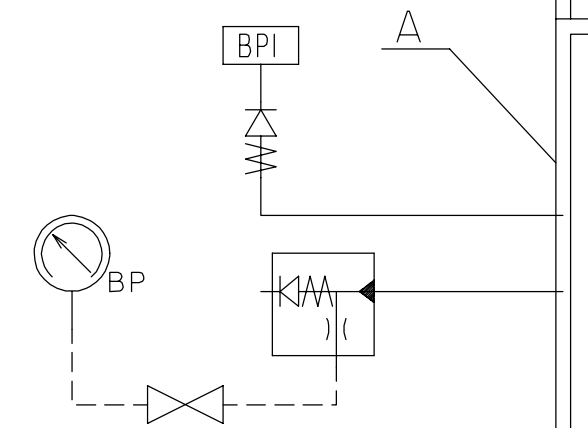
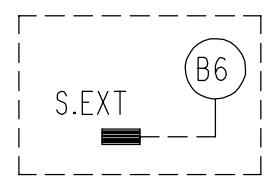
IMPLANTATION MATERIEL

MODELES	CIRCUIT	RESERVOIR	EVAPORATEUR
1803	CIRCUIT 1	140 H	FYN 355.20.222
	CIRCUIT 2	60 H	FYN 355.20.222
1600	CIRCUIT 1	140 H	FYN 355.20.222
	CIRCUIT 2	60 H	FYN 355.20.222
1400	CIRCUIT 1	140 H	FYN 355.20.222
	CIRCUIT 2	40 H	FYN 355.20.222
1203	CIRCUIT 1	140 H	FYN 355.20.222
	CIRCUIT 2	40 H	FYN 355.20.222

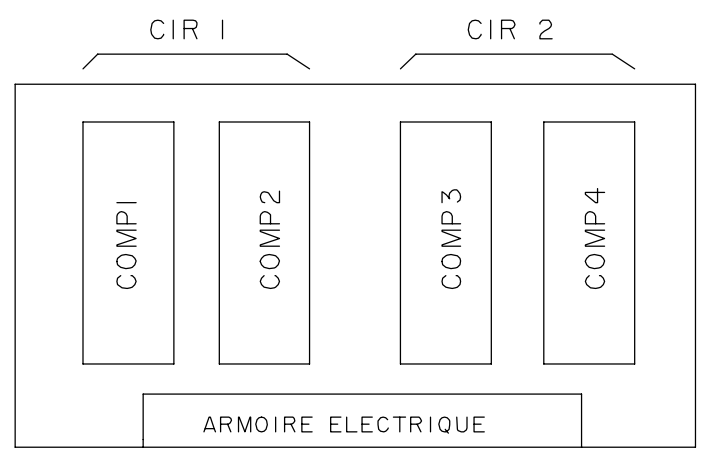
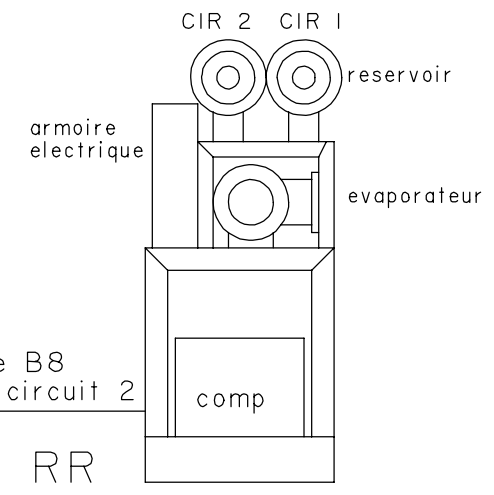


PG	34	29.03.00	I PRESSOSTAT HP PAR COMP
MODIFIE PAR	IND	N.ETUDE	DATE
		APPAREIL OU UNITE LRN 1203 A 1803	
DESIGNATION SCHEMA FRIGORIFIQUE 3 COMPRESSEURS 2 CIRCUITS		ECHELLE	TRAITEMENT
NUMERO DE COMMANDE:		FOLIO	MASSE:
NOTE D'ETUDE:		1/1	REMPLECE PAR:
VERIFIE PAR:		FORMAT	REMPLECE:
DESSIN PAR: SC		A3	NUMERO DE PLAN
DATE: 24-03-92		3955961	
		INDICE 34	

DEMARRAGE A VIDE POUR  
OPTION PART WINDING  
OU ETOILE TRIANGLE



MODELES	CIRCUIT Nb	Puissance	Ø A	Ø A'	Ø R	Ø R'	Ø L	Ø D	Ø RR
2400	2	2X60	2"5/8	2"1/8	2"1/8	1"3/8	1"3/8	1"3/8	2"5/8
2200	1	2X60	2"5/8	2"1/8	2"1/8	1"3/8	1"3/8	1"3/8	2"5/8
2000	2	2X50	2"5/8	2"1/8	2"1/8	1"3/8	1"1/8	1"3/8	2"1/8
1804	1	2X50	2"5/8	2"1/8	2"1/8	1"3/8	1"1/8	1"3/8	2"1/8
	1	2X40	2"1/8	1"5/8	1"5/8	1"3/8	1"1/8	1"1/8	2"1/8



MODELES	RESERVOIR	EVAPORATEUR
2400	2 x 140 H	FYN 406.25.222
2200	2 x 140 H	FYN 406.25.222
2000	2 x 140 H	FYN 355.25.222
1804	2 x 140 H	FYN 355.25.222

PG 34	30.03.00	2 PRESSOSTATS HP
MODIFIE PAR IND	N.ETUDE DATE	MODIFICATION
APPAREIL OU UNITE LRN 1804 A 2400		MATIERE:
DESIGNATION SCHEMA FRIGORIFIQUE 4 COMPRESSEURS 2 CIRCUITS		ECHELLE TRAITEMENT
NUMERO DE COMMANDE:		FOLIO REMPLECE PAR:
NOTE D'ETUDE: DATE:		REMPLECE:
VERIFIE PAR: DATE:		FORMAT NUMERO DE PLAN
DESSIN PAR: SC DATE:24-03-92		INDICE



3955959 34