



Spare Parts Guide

EN • Valid from 01.01.2018

ESBE Made in Sweden since 1906



Hydronic system control units for your daily work

System units • System components • Accessories • Spare parts

IT WORKS.

For more than 100 years we have been establishing new standards time after time for what valves and actuators can do in different systems. All our products have one or more of the following features in common: they use less energy, they enhance comfort and they improve safety; in systems for heating, cooling and tap water.

All the time in your daily work, installing valves and actuators, it is important that you can rely on the products you use. We can ensure you of this. It works!

Further technical information

On our website you will find loads of useful information like instruction manuals, certificates and technical data. You can also download and install our popular "ESBE Hydronic selection" software.

Visit esbe.eu for detail product info.



CONTENTS



**CIRCULATION
UNITS**
4

1



**RETURN TEMPERATURE
UNITS**
4

2



**FRESH HYDRO
UNITS**
4

3



ROTARY VALVES
5-8

4



ROTARY ACTUATORS
9

5



CONTROLLERS
10-11

6



**SOLID FUEL
PRODUCTS**
12-13

7



**DIVERTING VALVES
& ZONE VALVES**
13

8



**THERMOSTATIC
MIXING VALVES**
14-15

9



THERMOSTATIC UNITS
16

10



LINEAR VALVES
16

11

CIRCULATION UNITS, RETURN TEMPERATURE UNITS

Series GDx, GFx, GRx, GBx, GSx



GDx, GFx, GRx, GBx GSx



67003100



67000100,
67000300



67000400,
67000500



67000600



67003900



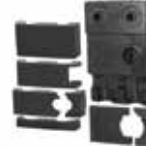
67003300



67003400,
67003500



67003000



67004400



67002000

Applies to			Type	Reference	Art.No.
DN20	DN25	DN32			
•			Pump Wilo RSTG15/7.5	GSP931	67003100
	•		Pump Wilo RKA25/6	GSP901	67000100
		•	Pump Wilo RKA25/7.5		67000300
	•		Pump Grundfos UPM3 25-50		67000400
		•	Pump Grundfos UPM3 25-70		67000500
•	•	•	Thermometer upgr set, 2 pcs/package		GSP903
•			PWM cable Wilo RSTG, 3 meter	GSP932	67003900
•			Ball valves incl thermometer DN 20, 2 pcs/package	GSP933	67003300
	•		Ball valves incl thermometer DN 25, 2 pcs/package	GSP911	67003400
		•	Ball valves incl thermometer DN 32, 2 pcs/package		67003500
•			Insulation circulation unit DN 20	GSP930	67003000
	•	•	Insulation circulation unit DN 25/32	GSP910	67004400
	•	•	Insulation circulation unit Flexi		67002000

FRESH HYDRO UNIT

Series FSK



FSK101



64040100



64040200



64040300



64040400

Type	Reference	Art.No.
Heat exchanger PBU11/41	FSK908	64040100
Pump Yonos Para HU 25/7.5	FSK901	64040200
Hydro control	FSK907	64040300
Gasket kit	FSK904	64040400
Sensor Grundfos	FSK905	64040500
Actuator ESBE SLB239	FSK906	64040600
Sensor PT1000	FSK909	64040700



64040500



64040600



64040700

ROTARY VALVES

Series VRG, VRB, VRH



VRG130, VRG330



VRG140, VRB140

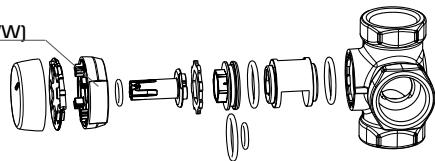


VRG230



VRH130

Date code (YYWW)


 17006900, 17006910,
17006920, 17006930,
17006950


17006940

Valve type	Applies to			Joining set		Handle knob/Scale	
	Art.No.	DN	from (YYMM)	Reference	Art.No.	Reference	Art.No.
VRG130	116001xx - 116009xx, 116015xx - 116023xx, 116029xx - 116030xx	15/20		VRG802	17006900	VRG803	17006940
	116010xx - 116011xx 116024xx - 116025xx 116031xx	25			17006910		
	116012xx, 116026xx 116034xx - 116035xx	32/40			17006920		
	116013xx - 116014xx 116027xx - 116028xx	40/50			17006930		
	116036xx - 116037xx	50			17006950		
VRH130	117201xx - 117203xx	20		VRG802	17006910	VRG803	17006940
VRG140	116401xx - 116403xx 116408xx - 116410xx	15/20		VRG802	17006900	VRG803	17006940
	116404xx, 116411xx	25			17006910		
	116405xx, 116412xx 116415xx - 116416xx	32/40			17006920		
	116406xx - 116407xx 116413xx - 116414xx	40/50			17006930		
	116417xx - 116418xx	50			17006950		
VRG230	116201xx, 116206xx, 116211xx - 116212xx	20		VRG802	17006900	VRG803	17006940
	116202xx, 116207xx, 116213xx	25			17006910		
	116203xx, 116208xx 116214xx - 116215xx	32/40			17006920		
	116204xx - 116205xx 116209xx - 116210xx	40/50			17006930		
	116216xx - 116217xx	50			17006950		
VRG330	117001xx, 117006xx	20		VRG802	17006900	VRG803	17006940
	117002xx, 117007xx	25			17006910		
	117003xx, 117008xx 117011xx - 117012xx	32/40			17006920		
	117004xx - 117005xx 117009xx - 117010xx	40/50			17006930		
	117013xx - 117014xx	50			17006950		
VRB140	116601xx - 116602xx 116608xx - 116609xx 116615xx - 116616xx	15/20		VRG802	17006900	VRG803	17006940
	116604xx, 116611xx, 116617xx	25			17006910		
	116605xx, 116612xx 116620xx - 116621xx	32/40			17006920		
	116606xx - 116607xx 116613xx - 116614xx	40/50			17006930		
	116622xx - 116623xx	50			17006950		

ROTARY VALVES

Series 3MG, 3HG



3MG



3MGP



3HG



17000600

17002400, 17002500,
17004300

17007500

Valve type	Applies to		Interior complete		Handle knob/Lever		Jointing set	
	Art.No.	up to (YYMM)	Reference	Art.No.	Reference	Art.No.	Reference	Art.No.
3MG15 - 3MG28 (Kvs 0.6-8)	11000100		3MG-1	17002400	MG	17007500	MG	17000600
	11000200							
	11000300							
	11000400							
	11000500							
	11000700							
	11001100							
3MGP15 - 3MGP25 (Kvs 2.5-8)	11005500		3MG-2	17002500	MG	17007500	MG	17000600
	11005600							
	11002000							
3MG25 -12 3MG32 -18 (Kvs 12-18)	11002400		3MG-2	17002500	MG	17007500	MG	17000600
	11002700							
3MGP32 (Kvs 18)	11005700							
3HG25	11350500		3HG	17004300	MG	17007500	MG	17000600
	11351200							

ROTARY VALVES

Series 4MG, 4HG, TM, 5MG, BIV20



4MG



4HG



TM



5MG



BIV20



17000600

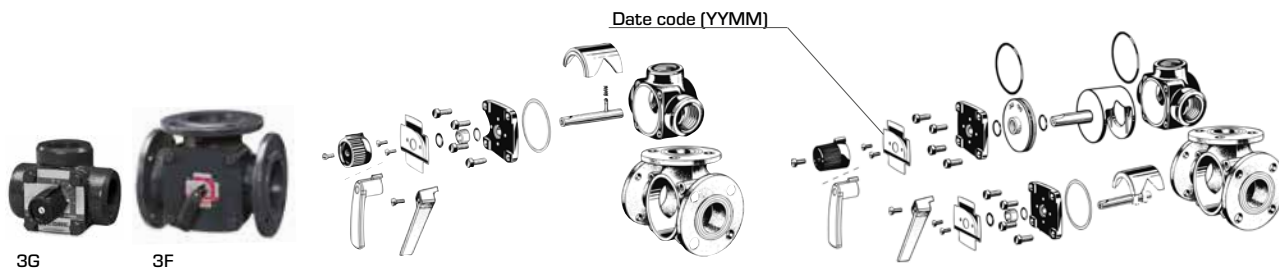
17003700, 17003800,
17004100, 17004200,
17004400

17007500

Valve type	Applies to		Interior complete		Handle knob/Lever		Jointing set	
	Art.No.	up to (YYMM)	Reference	Art.No.	Reference	Art.No.	Reference	Art.No.
4MG15 - 4MG25 (Kvs 2.5-8)	11003400		4MG-1	17003800	MG	17007500	MG	17000600
	11003600							
	11003900							
	11004200							
4MG25 -12 4MG32 -18 (Kvs 12-18)	11004700		4MG-2	17004100	MG	17007500	MG	17000600
	11004900							
4HG25 -8 4HG25 -6.3	11350100		TM/HG-1	17003700	MG	17007500	MG	17000600
	11350200							
4HG25 -10	11350800		TM-2/HG-2	17004200				
TM22	11300400	9412	TM/HG-1	17003700				
TM20	11300400		TM-2/HG-2	17004200				
5MG25 -8 5MG32 -18	11005200		-		MG	17007500	MG	17000600
	11005300							
BIV20	11450100		BIV20-22	17004400				
BIV22	11450300							

ROTARY VALVES

Series 3G, 3F

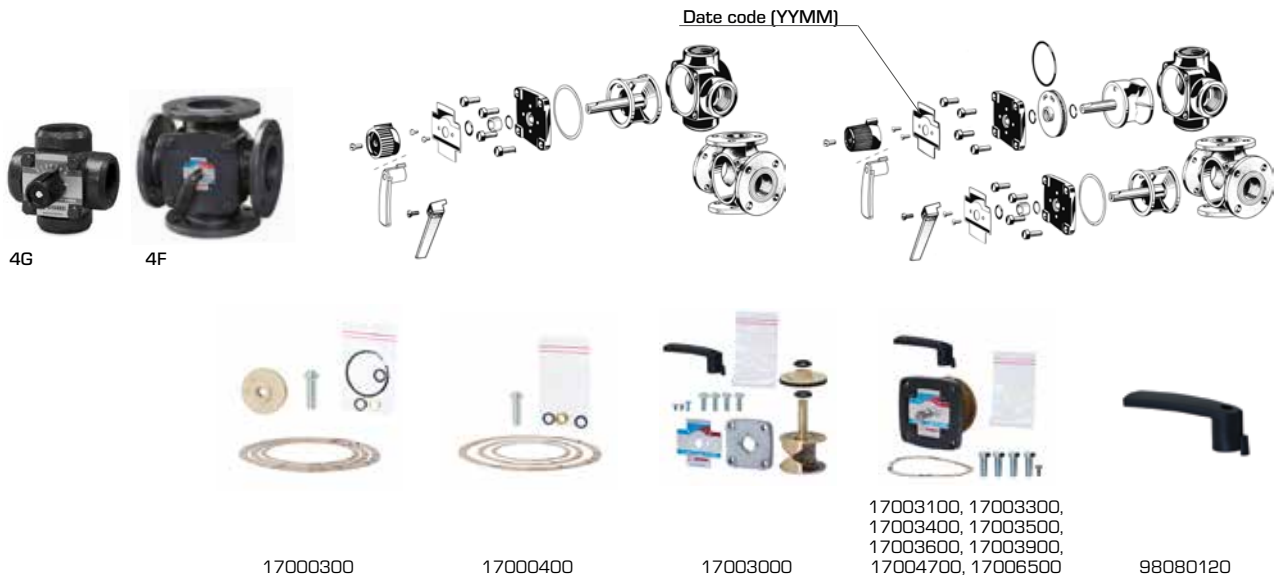


Valve type	Applies to		Interior complete		Handle knob/Lever		Jointing set	
	Art.No.	up to (YYMM)	Reference	Art.No.	Reference	Art.No.	Reference	Art.No.
G119 - 138	11050100 11050200 11050300 11050400	9605	K1C	17000800	Lever*	98080120	No. 1 (DN 20-65)	17000300
G151	11050600	9612	K2A-S	17001100				
F120-125	110 - 111	9605	K1C	17000800				
F132-140	112 - 113	9612	K2A-S	17001100				
F150-165	11100600 115	9012	-	-				
F180	116		-	-				
F1100	117		K5A-S	17001800				
F1125	118		-	-				
F1150	119		K6-S	17002100				
3H25	11351500		3H25	17004500			No. 2 (DN 80-150)	17000400
					No. 1 (DN 20-65)	17000300		

Valve type	Applies to		Interior complete		Handle knob/Lever		Jointing set	
	Art.No.	from (YYMM)	Reference	Art.No.	Reference	Art.No.	Reference	Art.No.
3G20 - 40	11050100 11050200 11050300 11050400	9606	K1C	17000800	Lever	98080120	No. 1 (DN 20-65)	17000300
3G50	11050600	9701	K2A-S	17001100				
3F20 - 25	11100100 11100200	9606	K1C	17000800				
3F32 - 40	11100300 11100400	9701	K2A-S	17001100				
3F50 - 65	11100600 11000800	9101	K3A-S	17001400				
3F80	11101000		K4-S	17001700				
3F100	11101200		K5A-S	17001800				
3F125	11101400		K5B-S	17002000				
3F150	11101600		K6-S	17002100				
3H32 - 40	11351700 11351900		3H32-40	17004600			No. 2 (DN 80-150)	17000400
					No. 1 (DN 20-65)	17000300		

Notes: *Replaces Handle knob Art.No. 17007500 and Lever Art.No. 98360010

ROTARY VALVES
Series 4G, 4F



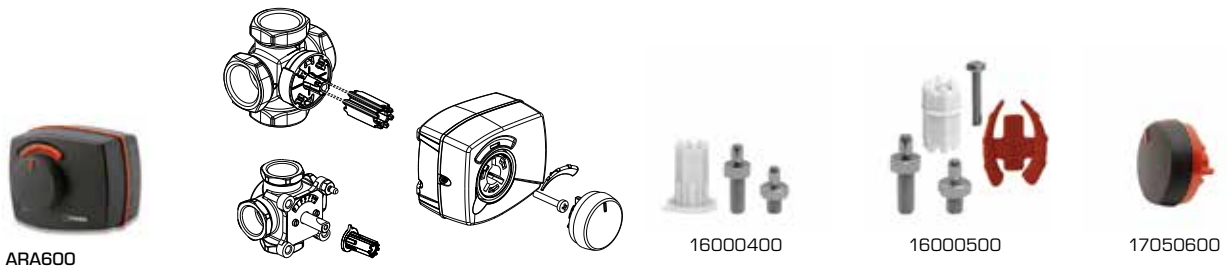
Valve type	Applies to		Interior complete		Handle knob/Lever		Jointing set	
	Art.No.	up to (YYMM)	Reference	Art.No.	Reference	Art.No.	Reference	Art.No.
G419 - 438	11050800 11051000 11051300 11051400	9605	V1	17003000	Lever*	98080120	No. 1 (DN 20-65)	17000300
G451	11051600		V2A	17003100				
F432-440	11101700 11101800		—	—				
F450-465	11101900 11102000		V4	17003400			No. 2 (DN 80-150)	17000400
F480	11102100		V5	17003500				
F4100 - 4125	11102200 11102300		—	—				
F4150	11102400		—	—				

Valve type	Applies to		Interior complete		Handle knob/Lever		Jointing set	
	Art.No.	from (YYMM)	Reference	Art.No.	Reference	Art.No.	Reference	Art.No.
4G20 - 40	11050800 11051000 11051300 11051400	9606	V1	17003000	Lever	98080120	No. 1 (DN 20-65)	17000300
4G50	11051600		V2A	17003100				
4F32 - 40	11101700 11101800		—	—				
4F50 - 65	11101900 11102000		V4	17003400			No. 2 (DN 80-150)	17000400
4F80	11102100		V5	17003500				
4F100 - 125	11102200 11102300		—	—			No. 1 (DN 20-65)	17000300
4F150	11102400		V1T	17006500				
4H20 - 25	11351300 11351400		4H32 - 40	17004700				
4H32 - 40	11351800 11352000		V1T	17006500				
T20 - 32	11300900 11301000 11301100		BIV25	17003900				
BIV25	11450200							

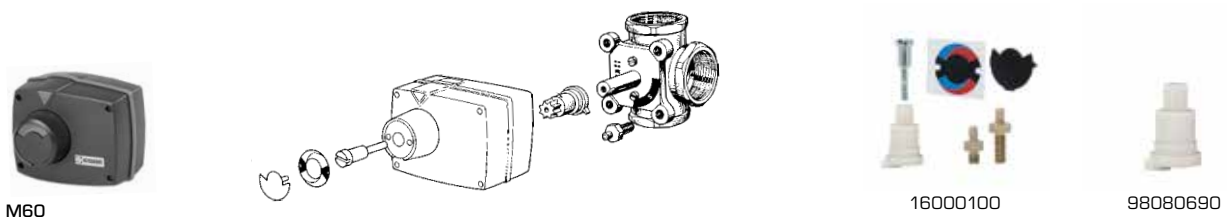
Notes: *Replaces Handle knob Art.No. 17007500 and Lever Art.No. 98360010

ROTARY ACTUATORS

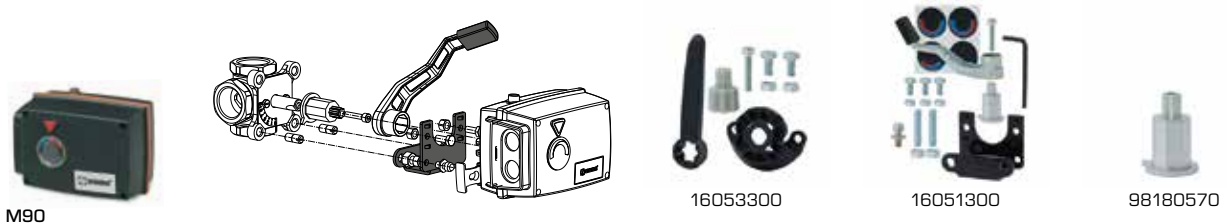
Series ARA600, M60, M90



Applies to Actuator type	Valves series	Adaptor kit		Knob	
		Reference	Art.No.	Reference	Art.No.
ARA600	MG, G, F, BIV, T, TM, H, HG	ARA802	16000400	ARA902	17050600
	VRG, VRB, MG, G, F, BIV, T, TM, H, HG	ARA803	16000500		



Applies to Actuator type	Valves series	Adaptor kit		Shaft coupling	
		Reference	Art.No.	Reference	Art.No.
60	MG, G, F, BIV, T, TM, H, HG	600	16000100	600	98080690



Applies to Actuator type	Valves series	Adaptor kit		Shaft coupling	
		Reference	Art.No.	Reference	Art.No.
90	VRG, VRB	VRG801	16053300	900	98180570
	MG, G, F, BIV, T, TM, H, HG	900	16051300		

CONTROLLERS

Series 90C-1, 90C-2, 90C-3, 95-1C, 90K



90C-1, 90C-2, 90C-3



95-1C

Applies to		Adaptor kit	
Controller type	Valves series	Reference	Art.No.
90C-1 90C-2 90C-3 95-1C	VRG, VRB, VRH	VRG804	16053700
	MG, G, F, BIV, T, TM, H, HG	90C	16053200

Applies to Controller type	Sensors		
	Type	Reference	Art.No.
90C-1 90C-2 90C-3	Room sensor	CRS231	17050700
	Flow pipe sensor	CRS211	17050800
	Universal sensor	CRS213	17050900
	Outdoor sensor	CRS214	17051000
	High temperature sensor	CRS215	17051100
95-1C	Fuse	-	17050100
	Pipe sensor	-	17050200
	Outdoor sensor	-	17050300
	Water sensor	-	17050400



90K

Applies to		Adaptor kit		Shaft coupling		Pipe sensor	
Controller type	Valves series	Reference	Art.No.	Reference	Art.No.	Reference	Art.No.
90K	VRG, VRB, VRH	VRG801	16053300	900	98180570	-	17050500
	MG, G, F, BIV, T, TM, H, HG	900	16051300				



16053700



16053200



17050100



17050200,
17050500, 17050800



17050300



17050400,
17050900, 17051100



17050700



17051000



16053300



16051300



98180570

CONTROLLERS

Series CRx, CUA



CRA11x, CRB, CRC, CRD, CRS



16000500



16053300



16051300



CRA120



17053100



17053300



17054100



CUA



17055100



17055300, 17055500



17055700



17056000

Applies to Controller type						Adaptor kits		
CRA11x	CRA12x	CRB	CRC	CRD	CRS	Applies to valves series	Reference	Art.No.
●		●	●	●	●	VRG, VRB, VRH, MG, G, F, BIV, T, TM, H, HG	ARA803	16000500
	●					VRG, VRB, VRH	VRG801	16053300
	●					MG, G, F, BIV, T, TM, H, HG	900	16051300

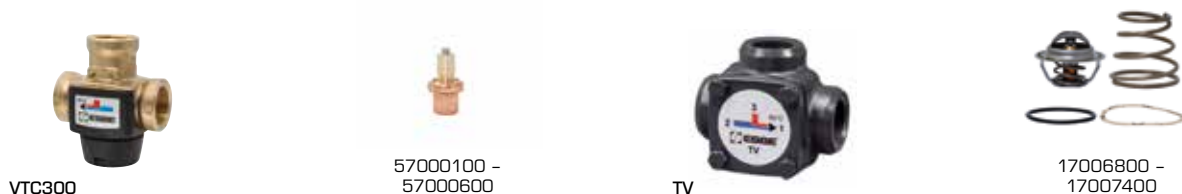
Applies to Controller type						Sensors, adaptors, cables etc.		
CRA11x, CRA12x	CRB	CRC	CRD	CRS	CUA	Type	Reference	Art.No.
●	●	●	●		●	Flow pipe sensor, 5m cable	CRA911	17053100
●	●	●	●	●	●	Voltage adaptor, 230V – 24V	CRA912	17053300
	●	●			●	Communication cable, 20m	CRB914	17055700
		●	●			Outdoor sensor	CRC911	17056000
	●		●			Controller [CRB122/CRD122 without room unit]	CRB911	17055100
	●				●	Room unit, cable	CRB912	17055300
	●		●		●	Room unit, wireless	CRB913	17055500
					●	Controller [CUA110 without room unit]	CUA911	17054100

SOLID FUEL PRODUCTS
Series LTC100, LTC200, VTC500



Applies to Valve type				Type	Reference	Art.No.
LTC100	LTC200	VTC510	VTC530			
•	•	•	•	Thermostat 50°C	VTC951	57020100
•	•	•	•	Thermostat 55°C		57020200
•	•	•	•	Thermostat 60°C		57020300
•	•	•	•	Thermostat 65°C		57020800
•	•	•	•	Thermostat 70°C		57020400
•	•	•	•	Thermostat 75°C		57020500
•	•	•	•	Thermometer, 3pcs	VTC952	57020600
•	•			Insulation, complete in two parts	VTC953	57060100
			•	Insulation, ≥ DN32, complete in two parts		57020700
•	•	•	•	Jointing set VTC/LTC, 3pcs of fibre gasket 1½"	LTC922	57020900
•				Pump DS RS 25/4	LTC914	57060200
•				Pump DS RS 25/7	LTC917	57060300
	•			Pump Yonos Para /6 RKA	LTC926	57061100
	•			Pump Yonos Para /7.5 RKA		57061200
•	•			Non-return insert	LTC921	57060400
•	•	•	•	Shut-off valves / Adapters 1½" x 1" 3pcs	LTC801	57060500
•	•	•	•	Shut-off valves / Adapters 1½" x 1¼" 3pcs		57060600
•	•	•	•	Shut-off valves / Adapters 1½" x 1½" 3pcs		57060700
•	•	•	•	Shut-off valves / Adapters 1½" x 2" 3pcs		57060800
•	•	•	•	Shut-off valves / Adapters 1½" x CPF 28mm 3pcs		57060900
•	•	•	•	Shut-off valves / Adapters 1½" x CPF 35mm 3pcs		57061000

SOLID FUEL PRODUCTS
Series VTC300, TV



Applies to Valve type	Thermostat		
	Type	Reference	Art.No.
VTC300	42°C	VTC931	57000600
	45°C		57000100
	50°C		57000700
	55°C		57000200
	60°C		57000300
	70°C		57000400
	80°C	57000500	

Valve type	Applies to		Interior complete	
	Art.No.	Type	Art.No.	
TV45°C	11400600, 11401100, 11401500	45°C	17007300	
TV55°C	11400700, 11401200, 11401600	55°C	17007400	
TV60°C	11400400, 11400800, 11401300	60°C	17006800	
TV72°C	11400100, 11400200, 11400300	72°C	17007000	

SOLID FUEL PRODUCTS

Series ATA



ATA100



ATA200



37200900



57100100



57100200

37201000, 37202500,
37202600

Applies to Valve type		Type	Reference	Art.No.
ATA100	ATA200			
•		Handle knob	ATA901	37200900
•	•	Fork		57100100
•		Eccentric		57100200
•		Thermostat 40 - 95°C	ATA902	37201000
	•	Thermostat 35 - 95°C		37202500
	•	Thermostat 60 - 95°C		37202600

DIVERTING VALVES

Series VTD300, VTD500



VTD300



VTD500

37102000 -
37102300

37102400

Applies to Valve type		Type	Reference	Art.No.
VTD300	VTD500			
•		Exchange kit 45°C	VTD911	37102000
•		Exchange kit 50°C		37102100
•		Exchange kit 60°C		37102200
•		Exchange kit 70°C		37102300
	•	Exchange kit,, 40 - 52°C	VTD958	37102400

DIVERTING VALVES

Series VZA, VZB, VZC, VZD



VZA, VZB, VZC, VZD

46050300 -
4605040047050200 -
47050500

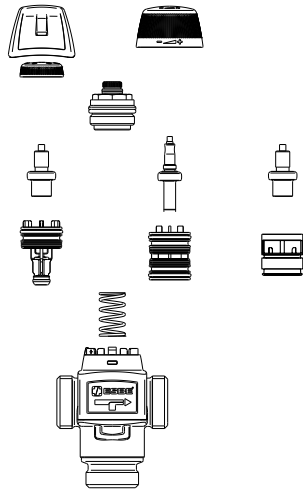
47000100

Applies to type					Type	Reference	Art.No.
VZA 4302xxxx 4304xxxx	VZA 4300xxxx	VZB	VZC	VZD			
•		•	•	•	Cable loose version IP20, 3-wire	ALZ801	46050300
•		•	•	•	Cable loose version IP20, 6-wire for use with Auxiliary switch		46050400
•	•	•	•	•	Actuator, 2-point 230V IP40	ALZ960	47050200
•	•	•	•	•	Actuator, 2-point 230V IP20		47050400
•	•	•	•	•	Actuator, 2-point 230V IP40 with Auxiliary switch	ALZ950	47050300
•	•	•	•	•	Actuator, 2-point 230V IP20 with Auxiliary switch		47050500
•	•	•			Valve interior complete	VZA900	47000100

THERMOSTATIC MIXING VALVES
Series VTA300, VTA500, VTS500



VTA300



98080420



98080480



98080440



98082130



37000400, 37000500,
37000700, 37001300,
37001400



37000100, 37000200,
37000800, 37000900



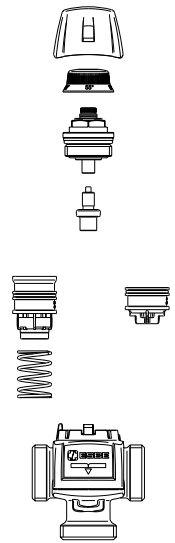
37001100,
37001200

Applies to		Exchange kit		
Valve type	Art. No.	Reference	Temp.	Art.No.
VTA310		VTA931	35 - 60°C 30 - 70°C	37000700 37001400
VTA320		VTA932	35 - 60°C 20 - 43°C 30 - 70°C	37000400 37000500 37001300
VTA330		VTA933	35 - 60°C 32 - 49°C	37000100 37000200
VTA350		VTA936	35 - 60°C	37000800
VTA360		VTA936	35 - 60°C 32 - 49°C	37000800 37000900
VTA370	31104400	VTA937	20 - 43°C	37001200
	31104000, 31104500		35 - 60°C	37001100
	31200100, 31200200, 31200300		20 - 55°C	37001700

Applies to Valve type						Knob	
VTA 310	VTA 320	VTA 330	VTA 350	VTA 360	VTA 370	Ref.	Art.No.
	•	•	•	•	•*	VTA903	98080420
	•	•	•	•	•*		98080480
•							98080440
					•		98082130



VTA500,
VTS500



37100400 - 37100600,
37100700 - 37100800,
37100900 - 37101000,
37101100 - 37101300,
37120300 - 37120400

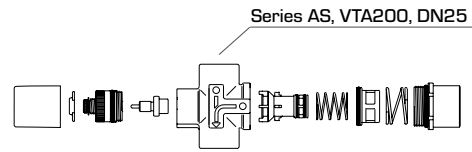
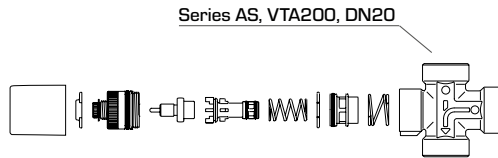
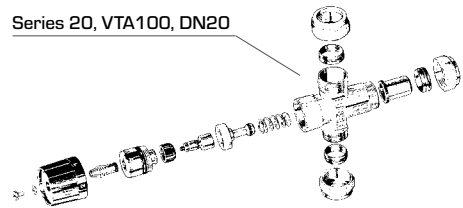
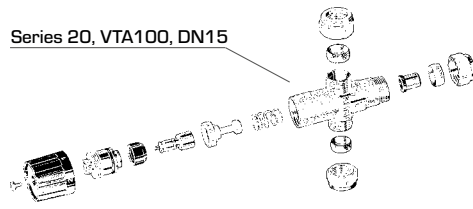
37100100 - 37100300,
37100700 - 37100800,
37101100 - 37101300,
37120100 - 37120200

Applies to		Exchange kit		
Valve type	Art. No.	Reference	Temp.	Art.No.
VTA520		VTA952	20 - 43°C	37100100
			29 - 49°C	37101600
			45 - 65°C	37100200
			50 - 75°C	37100300
VTA550		VTA955	20 - 43°C	37100400
			45 - 65°C	37100500
			50 - 75°C	37100600
VTA530		VTA953	45 - 65°C	37100700
			35 - 50°C	37100800
VTA560		VTA956	45 - 65°C	37100900
			35 - 50°C	37101000
VTA570		VTA957	10 - 30°C	37101100
			20 - 43°C	37101200
			20 - 55°C	37101500
			45 - 65°C	37101300
VTS520		VTS952	45 - 65°C	37120100
			50 - 75°C	37120200
VTS550		VTS955	45 - 65°C	37120300
			50 - 75°C	37120400

Notes: * Applies to Art. No. 31104000, 31104400, 31104500

THERMOSTATIC MIXING VALVES

Series 20, VTA100, AS, VTA200



98080180,
98080150



36500100 -
36500400



37051600,
37051700



37050400 -
37051500, 37052100

Series	Applies to		Handle knob Art.No.	Check valve* Art.No.	Exchange kit Art.No.
	Art. No.	DN, Temp.			
20, VTA100	401, 410	DN15 38 - 65°C	98080180	36500100	37051700
	401L, 410L (411)	DN15 20 - 40°C			-
	403, 404, 405, 414, 417, 418 (402, 406, 409)	DN20 38 - 65°C	98080150	36500400	37051600
	403L 404L	DN20 20 - 40°C			-

Series	Applies to		Check valve*		Exchange kit	
	Art. No.	DN, Kv, Temp.	Ref.	Art.No.	Ref.	Art.No.
AS, VTA200	470 - 475	DN 20 - 25, Kv 1.6, 38 - 65°C	VCA100, 20	36500400	VTA922	37050400
	470L - 475L	DN 20 - 25, Kv 1.6, 20 - 40°C				37050800
	470LX - 475LX	DN 20 - 25, Kv 1.6, 10 - 30°C				37050900
		DN 20, Kv 1.6, 20 - 40°C			VTA972	37052100
		DN 20, Kv 1.6, 30 - 70°C			VTA972	37052000
	31300100, 31301200	DN25, Kv 3.0, 38 - 65°C			VTA922	37051000
	31300700	DN25, Kv 3.0, 20 - 40°C	-		VTA922	37051400
31300800	DN25, Kv 3.0, 10 - 30°C				37051500	

SOLAR KIT

Series VMC300, VMC500



VMC300



VMC500



37102000 -
37102200



37100400,
37120300



57000600

Applies to Valve type		Type	Reference	Art.No.
VMC300	VMC500			
•	•	Exchange kit 45°C	VTD911	37102000
•	•	Exchange kit 50°C		37102100
•	•	Exchange kit 60°C		37102200
•		Exchange kit, series VTA320, 35 - 60°C	VTA932	37000400
	•	Exchange kit, series VTS550, 45 - 65°C	VTS955	37120300
•		Thermostat 45°C	VTC931	57000600

Notes: * Applies to models with compression fittings on the cold water inlet

LINEAR VALVES

Series VLA, VLB, VLC



VLA, VLB, VLC



27000100, 27000200
27000700



27000800

Applies to valve type				Type	Reference	Art.No.
VLAxxx	VLB1xx, VLB1xx	VLB3xx	VLC3xx			
•				Exchange kit Packing box	VLA901	27000100
	•				VLB901	27000700
		•			VLB903	27000800
			•	Exchange kit High temperature packing box for media temperatures up to 180°C	VLC901	27000200



MADE IN SWEDEN WITH THE WORLD IN MIND

Five sales companies and partners in over 30 countries gives ESBE a large market presence throughout Europe. The base is still in Reftete in the county of Småland, the tiny village in southern Sweden where it all began. The Swedish plant with head office, R&D department and factory is state-of-the-art and products are distributed all over Europe.

To meet the demands on high delivery reliability – and because our product portfolio is constantly growing in size as well as brand awareness – our products are delivered to central and southern Europe via ESBE's distribution centre in Munich.

Find country specific contacts info >> esbe.eu

ESBE COMPANIES

Sweden • Head office and factory

ESBE AB
Tel: +46 (0)371 - 570 000
www.esbe.se

Poland

ESBE Hydronic Systems Sp. z o.o.
Tel: +48 61 85 10 728
www.esbe.pl

Germany, Austria

ESBE GmbH
Tel: +49 (0)8131 99 6670
www.esbe.de

France

ESBE S.a.r.l.
Tel: +33 (0) 1 47 90 07 26
www.esbe.fr

Italy

ESBE S.r.l.
Tel: +39 059 280094
www.esbe-italia.it



NO.1 IN HYDRONIC SYSTEM CONTROL