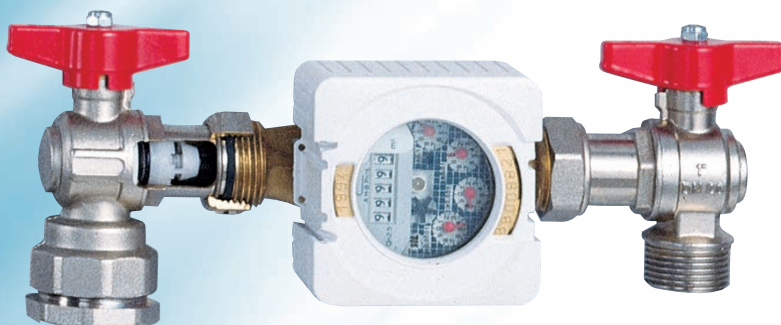


BALL VALVES FOR WATER METERS



valve
cimberio[®]
technological solutions

WATER METER INLET BALL VALVES



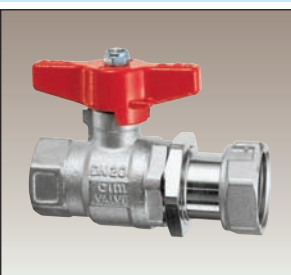
cim 204

BALL VALVE FOR WATER METER INLET
FEMALE/SWIVEL NUT FIXING RING/BACKET

cim 204 BR



DN	1/2 x 3/4	3/4 x 3/4	3/4 x 1"	1" x 3/4	1" x 1"	1" x 1 1/4"	1 1/4" x 1"	1 1/4" x 1 1/2"	1 1/2" x 2"	2" x 2"
Ø mm.	15	15	20	20	20	25	32	32	40	50
Box	30	30	16	16	16	10	10	8	8	4



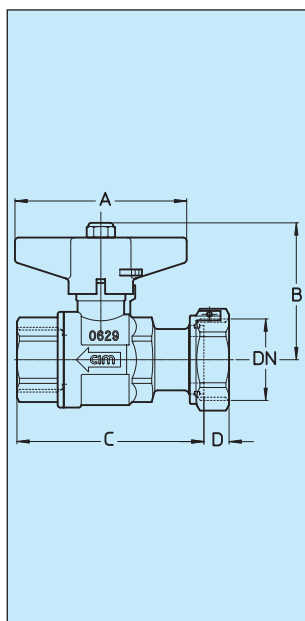
cim 204 CR

BALL VALVE IN DZR BRASS "CR" ALLOY FOR WATER METER INLET
FEMALE/SWIVEL NUT FIXING RING/BACKET

cim 204 CRBR



DN	1/2 x 3/4	3/4 x 3/4	3/4 x 1"	1" x 3/4	1" x 1"	1" x 1 1/4"	1 1/4" x 1"	1 1/4" x 1 1/2"	1 1/2" x 2"	2" x 2"
Ø mm.	15	15	20	20	25	25	32	32	40	50
Box	30	30	16	16	10	10	8	8	8	4



DN	Cim 204					Cim 204 BR					Cim 204 CR					Cim 204 CRBR				
	Grms.	A	B	C	D	Grms.	A	B	C	D	Grms.	A	B	C	D	Grms.	A	B	C	D
1/2x3/4	245	50	52	64	9	340	50	52	78,5	9	300	50	52	74,5	9	340	50	52	78,5	9
3/4x3/4	285	50	52	67,5	9	465	70	56	85,5	9	432	70	56	80	9	465	70	56	85,5	9
3/4x1"	420	70	56	76	10	420	70	56	86	10	475	70	56	81	10	525	70	56	86	10
1"x3/4	505	70	56	87	9	520	70	56	92,5	9	-	-	-	-	-	-	-	-	-	-
1"x1"	470	70	56	83	10	580	70	56	93	10	670	70	60	89,5	10	-	-	-	-	-
1"x1 1/4"	717	70	60	89,5	11	700	70	60	89,5	11	717	70	60	90	11	700	70	60	89,5	11
1 1/4"x1"	1025	85	73	107	10	1040	85	73	107	10	1025	85	73	107	10	1040	85	73	107	10
1 1/4"x1 1/2"	1158	85	73	111	11	1180	85	73	111	11	1158	85	73	111	11	1180	85	73	111	11
1 1/2"x2"	1895	100	88	130,5	14	1990	100	88	130,5	14	1895	100	88	130,5	14	1990	100	88	130,5	14
2"x2"	2435	100	96	146,5	14	2500	100	96	146,5	14	2500	100	96	146,5	14	2500	100	96	146,5	14

cim 204 OT

BALL VALVE FOR WATER METER INLET FEMALE/SWIVEL NUT
BRASS HANDLE SQUARE CAP 20x20

cim 204/206



DN	1/2 x 3/4	3/4 x 3/4	3/4 x 1"	1" x 3/4	1" x 1"	1" x 1 1/4"	1 1/4" x 1"	1 1/4" x 1 1/2"	1 1/2" x 2"	2" x 2"
Ø mm.	15	15	20	20	20	25	32	32	40	50
Box	30	30	16	16	16	10	10	8	8	4



cim 204 NR

BALL VALVE WITH NON RETURN VALVE FOR WATER METER INLET
FEMALE/SWIVEL NUT MALE /SWIVEL NUT

cim 205 NR



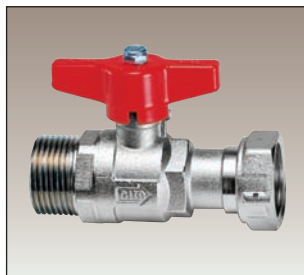
DN	1/2 x 3/4	3/4 x 3/4	3/4 x 1"	1" x 3/4	1" x 1"					
Ø mm.	15	15	20		20					
Box	30	30	16		16					



cim 205

BALL VALVE FOR WATER METER INLET
MALE/SWIVEL NUT FIXING RING/BACKET

cim 205 BR



DN	1/2 x 3/4	3/4 x 3/4	3/4 x 1"	1" x 3/4	1" x 1"	1" x 1 1/4"	1 1/4" x 1"	1 1/4" x 1 1/2"	1 1/2" x 2"	2" x 2"
Ø mm.	15	15	20	20	20	25	32	35	40	50
Box	30	30	16	16	16	10	10	8	8	4



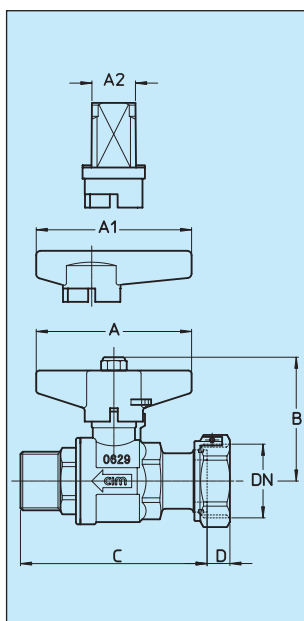
cim 287

BALL VALVE FOR WATER METER INLET
COMPRESSION/SWIVEL NUT FIXING RING/BACKET

cim 287 BR



Ø TR x DN	15 x 3/4	22 x 3/4	22 x 1"	28 x 1"	28 x 1 1/4"	35 x 1"	35 x 1 1/2"	42 x 2"	54 x 2"
Ø mm.	15	20	20	25	25	32	32	40	50
Box	30	20	16	15	10	10	8	8	4



DN	Cim 204 OT					Cim 204/206					Cim 205 - Cim 205 BR							
	Grms.	A1	B	C	D	Grms.	A2	B	C	D	DN	Grms. 205	Grms. 205BR	A	B	C 205	C205BR	D
1/2x3/4	290	70	52	64	9	320	20x20	70	64	9	1/2x3/4	260	275	50	52	73	78	9
3/4x3/4	330	70	52	67,5	9	360	20x20	70	67,5	9	3/4x3/4	280	295	50	52	74	86	9
3/4x1"	455	70	56	76	10	485	20x20	74	76	10	3/4x1"	430	457	70	56	84	86,5	10
1"x3/4	505	70	56	87	9	570	20x20	74	87	9	1"x3/4	450	466	70	56	83,5	89	9
1"x1"	540	70	56	83	10	535	20x20	74	83	10	1"x1"	470	497	70	56	86	89,5	10
1"x1 1/4"	750	70	60	89,5	11	780	20x20	80	89,5	11	1"x1 1/4"	620	760	70	60	87	107	11
1 1/4"x1"	1080	90	73	107	10	1085	20x20	88	107	10	1 1/4"x1"	1016	1043	85	73	107,5	107,5	10
1 1/4"x1 1/2"	1210	90	73	111	11	1220	20x20	88	111	11	1 1/4"x1 1/2"	1090	1135	85	73	111,5	111,5	11
1 1/2"x2"	1965	105	88	130,5	14	1950	20x20	100	130,5	14	1 1/2"x2"	1760	1823	100	88	130	130	14
2"x2"	2505	105	96	146,5	14	2490	20x20	106,5	146,5	14	2"x2"	2616	2680	100	96	146	146	14
DN	Cim 204 NR					Cim 205 NR					Cim 287 - Cim 287 BR							
	Grms.	A	B	C	D	Grms.	A	B	C	D	DN	Grms. 287	Grms. 287BR	A	B	C	D	
1/2x3/4	255	50	52	64	9	270	50	52	76	9	15x3/4	320	355	50	52	78	9	
3/4x3/4	265	50	52	67,5	9	290	50	52	77	9	22x3/4	435	485	70	56	86	9	
3/4x1"	430	70	56	76	10	445	70	56	91	10	22x1"	470	545	70	56	86,5	10	
1"x1"	490	70	56	83	10	485	70	56	93	10	28x1"	670	680	70	60	95	10	
											28x1 1/4"	700	700	70	60	97	11	
											35x1"	1030	1060	85	73	107,5	11	
											35x1 1/2"	1160	1205	85	73	111,5	11	
											42x2"	1970	2035	100	88	130	14	
											54x2"	2535	2600	100	96	146	14	

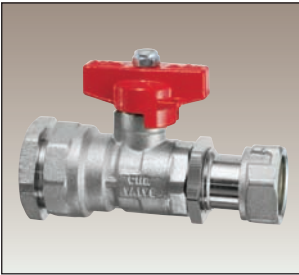
cim 283

BALL VALVE FOR WATER METER INLET POLYETHYLENE /SWIVEL NUT

cim 283 BR



PE x DN	16 x 3/4	20 x 3/4	25 x 3/4	25 x 1"	32 x 3/4	32 x 1"	32 x 1 1/4"	40 x 1"	40 x 1 1/2"	50 x 2"
Ø mm.	15	15	15	20	20	20	25	32	32	40
Box	25	25	20	15	15	15	10	8	8	4



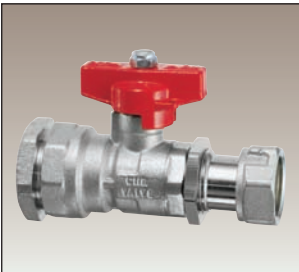
cim 283 NR

BALL VALVE WITH NON RETURN VALVE FOR WATER METER INLET POLYETHYLENE /SWIVEL NUT

cim 283 NRBR



PE x DN		20 x 3/4	25 x 3/4	25 x 1"		32 x 1"	32 x 1 1/4"			
Ø mm.		15	15	20		20	25			
Box		20	20	20		15	10			



cim 278

BALL VALVE POLYETHYLENE/EXTENSION FITTING WITH SWIVEL NUT ALUMINIUM HANDLE

cim 278 OT



PE x DN		20 x 3/4	25 x 3/4	25 x 1"		32 x 1 1/4"				
Ø mm.		15	15	20		25				
Box		20	20	15		10				



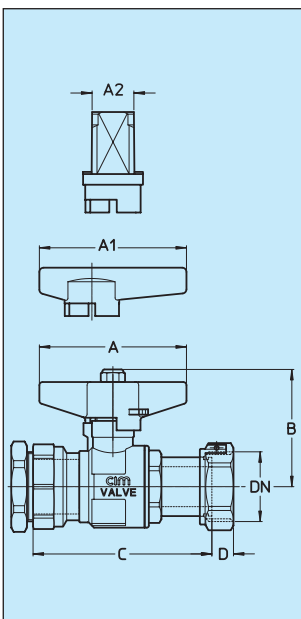
cim 283/206

BALL VALVE FOR WATER METER INLET POLYETHYLENE/SWIVEL NUT SQUARE CAP 20x20 - FIXED TYPE

cim 278/206



PE x DN	16 x 3/4	20 x 3/4	25 x 3/4	25 x 1"	32 x 3/4	32 x 1"	32 x 1 1/4"	40 x 1"	40 x 1 1/2"	50 x 2"
Ø mm.	15	15	15	20	20	20	25	32	32	40
Box	25	25	20	15	15	15	10	8	8	4



DN	Cim 283					Cim 283 BR					Cim 283 NR - Cim 283 NRBR						
	Grms.	A	B	C	D	Grms.	A	B	C	D	Grms.	Grms.	A	B	C	C	D
16x3/4	372	50	52	78,5	9	300	50	52	82,5	9	283 NR	283 NRBR	-	-	283 NR	283 NRBR	-
20x3/4	350	50	52	78,5	9	350	50	52	82,5	9	350	365	50	52	79	83	9
25x3/4	420	50	52	81	9	420	50	52	85	9	420	435	50	52	81	85	9
25x1"	540	70	56	85	10	540	70	56	90	10	550	577	70	56	85	90	10
32x3/4	590	70	56	87	9	590	70	56	92,5	9	-	-	-	-	-	-	-
32x1"	625	70	56	88	10	625	70	56	93	10	630	657	70	56	100	93,5	10
32x1 1/4"	785	70	60	94	11	895	70	56	104	11	785	785	70	60	106	104	11
40x1"	1310	85	73	113	10	1365	85	73	113	10	-	-	-	-	-	-	-
40x1 1/2"	1445	85	73	117	11	1520	85	73	117	11	-	-	-	-	-	-	-
50x2"	2200	100	88	137	14	2305	100	88	137	14	-	-	-	-	-	-	-
DN	Cim 283/206					Cim 278/206					Cim 278 - Cim 278 OT						
	Grms.	A2	B	C	D	Grms.	A2	B	C	D	Grms.	Grms.	A	A1	B	C	D
16x3/4	445	20x20	70	78,5	9	-	-	-	-	-	278	278 OT	-	-	-	-	-
20x3/4	425	20x20	70	78,5	9	570	20x20	70	96	16	495	535	50	70	52	96	16
25x3/4	495	20x20	70	81	9	600	20x20	70	98	16	525	565	50	70	52	98	16
25x1"	600	20x20	74	85	10	750	20x20	74	104	16	685	715	70	70	56	104	16
25x1 1/4"	-	-	-	-	-	-	-	-	-	-	-	-	-	-	-	-	-
32x3/4	650	20x20	74	87	9	-	-	-	-	-	-	-	-	-	-	-	-
32x1"	690	20x20	74	88	10	-	-	-	-	-	-	-	-	-	-	-	-
32x1 1/4"	850	20x20	80	94	11	1130	20x20	80	117	16	1065	1095	70	70	60	117	16
40x1"	1370	20x20	88	113	10	-	-	-	-	-	-	-	-	-	-	-	-
40x1 1/2"	1505	20x20	88	117	11	-	-	-	-	-	-	-	-	-	-	-	-
50x2"	2260	20x20	100	137	14	-	-	-	-	-	-	-	-	-	-	-	-

cim 203

BALL VALVE FOR WATER METER INLET FEMALE/EXTENSION FITTING WITH SWIVEL NUT
ALUMINIUM HANDLE

cim 203 OT



DN x DN	1/2 x 3/4	3/4 x 3/4	3/4 x 1"	1" x 1 1/4"
Ø mm.	15	15	20	25
Box	30	30	20	10



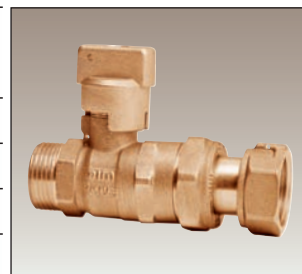
cim 198/206

BALL VALVE FOR WATER METER INLET MALE/EXTENSION FITTING WITH SWIVEL NUT
SQUARE CAP 20x20

cim 198/CH13



DN x DN		3/4 x 3/4		
Ø mm.		15		
Box		40		



cim 199

BALL VALVE FOR WATER METER INLET MALE/EXTENSION FITTING WITH SWIVEL NUT
ALUMINIUM HANDLE

cim 199 OT



DN x DN	1/2 x 3/4	3/4 x 3/4	3/4 x 1"	1" x 1 1/4"
Ø mm.	15	15	20	25
Box	30	30	20	10



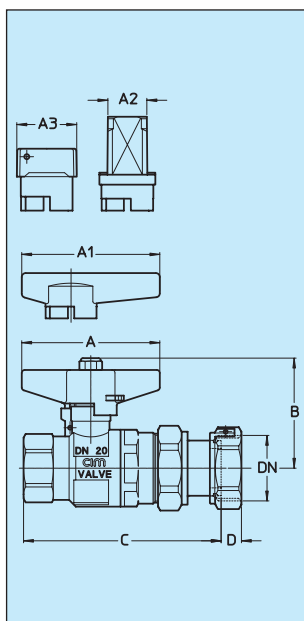
cim 199/206

BALL VALVE FOR WATER METER INLET MALE/EXTENSION FITTING WITH SWIVEL NUT
SQUARE CAP 20x20

cim 199/CH13



DN x DN	1/2 x 3/4	3/4 x 3/4	3/4 x 1"	1" x 1 1/4"
Ø mm.	15	15	20	25
Box	30	30	20	10



DN	Cim 203					Cim 203 OT					Cim 198/206					Cim 198/CH13				
	Grms.	A	B	C	D	Grms.	A1	B	C	D	Grms.	A2	B	C	D	Grms.	A3	B	C	D
1/2x3/4	395	50	52	92	9	435	70	52	92	9	-	-	-	-	-	-	-	-	-	-
3/4x3/4	430	50	52	95	9	470	70	52	95	9	455	20x20	67	89	9	430	13	50	89	9
3/4x1"	585	70	56	100	10	615	70	56	100	10	-	-	-	-	-	-	-	-	-	-
1"x1 1/4"	905	70	60	113	11	935	70	60	113	11	-	-	-	-	-	-	-	-	-	-
DN	Cim 199					Cim 199 OT					Cim 199/206					Cim 199/CH13				
	Grms.	A	B	C	D	Grms.	A1	B	C	D	Grms.	A2	B	C	D	Grms.	A3	B	C	D
1/2x3/4	385	50	52	91	9	425	70	52	91	9	445	20x20	70	91	9	-	-	-	-	-
3/4x3/4	400	50	52	92	9	440	70	52	92	9	465	20x20	67	92	9	440	13	50	92	9
3/4x1"	530	70	56	100,5	10	560	70	56	100,5	10	590	20x20	74	100,5	10	-	-	-	-	-
1"x1 1/4"	845	70	60	110	11	875	70	60	110	11	900	20x20	78	110	11	-	-	-	-	-



cim 284

RIGHT ANGLE BALL VALVE FOR WATER METER INLET
POLYETHYLENE /SWIVEL NUT

cim 284 BR



PE x DN	25 x 3/4	25 x 1"	32 x 3/4	32 x 1"	40 x 1 1/2"	50 x 2"
Ø mm.	15	20	20	20	32	40
Box	20	15	15	15	15	10



cim 284 NR

RIGHT ANGLE BALL VALVE WITH NON RETURN VALVE FOR WATER METER INLET
POLYETHYLENE /SWIVEL NUT

cim 284 NRBR



PE x DN	25 x 3/4	25 x 1"	32 x 1"
Ø mm.	15	20	20
Box	20	15	15



cim 289

RIGHT ANGLE BALL VALVE FOR WATER METER INLET
FEMALE /SWIVEL NUT

cim 289 BR



DN x DN	1/2 x 3/4	3/4 x 3/4	3/4 x 1"	1" x 3/4	1" x 1"
Ø mm.	15	20	20	20	20
Box	30	20	20	15	15



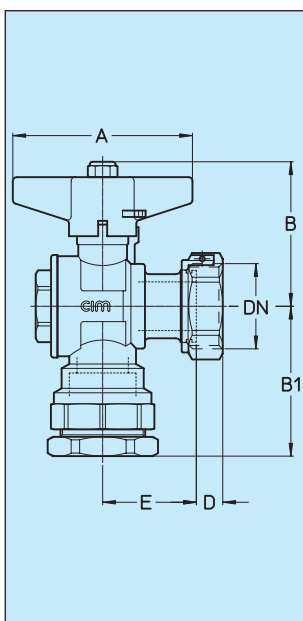
cim 290

RIGHT ANGLE BALL VALVE FOR WATER METER INLET
MALE /SWIVEL NUT

cim 290 BR



DN x DN	1/2 x 3/4	3/4 x 3/4	3/4 x 1"	1" x 3/4	1" x 1"
Ø mm.	15	20	20	20	20
Box	15	10	10	10	10



DN	Cim 284						Cim 284 BR						Cim 284 NR						Cim 284 NRBR					
	Grms.	A	B	B1	D	E	Grms.	A	B	B1	D	E	Grms.	A	B	B1	D	E	Grms.	A	B	B1	D	E
25"x3/4	420	50	52,5	45	9	34	510	50	52,5	45	9	49	420	50	52,5	45	9	46	485	50	52,5	45	9	49
25"x1"	440	70	56	48	10	36,5	640	70	56	48	10	50	450	70	56	48	10	47	545	70	56	48	10	50
32"x3/4	620	70	56	50	9	36,5	700	70	56	50	9	54	-	-	-	-	-	-	-	-	-	-	-	-
32"x1"	625	70	56	50	10	36,5	720	70	56	50	10	55	630	70	56	50	10	47	745	70	56	50	10	55
40"x1 1/2"	1191	85	72,5	61,5	11	65,5	1250	85	72,5	61,5	11	65,5	-	-	-	-	-	-	-	-	-	-	-	-
50"x2"	2679	100	88,5	74	14	77,5	2280	100	88,5	74	14	77,5	-	-	-	-	-	-	-	-	-	-	-	-
DN	Cim 289						Cim 289 BR						Cim 290						Cim 290 BR					
	Grms.	A	B	B1	D	E	Grms.	A	B	B1	D	E	Grms.	A	B	B1	D	E	Grms.	A	B	B1	D	E
1/2"x3/4	360	50	52,5	35	9	46	445	50	52,5	35	9	50	345	50	52,5	35	9	46	445	50	52,5	35	9	50
3/4"x3/4	435	70	56	45	9	46	485	70	56	45	9	51,5	420	70	56	42	9	46	485	70	56	42	9	52
3/4"x1"	470	70	56	45	10	47	545	70	56	45	10	52	456	70	56	42	10	47	545	70	56	42	10	52
1"x3/4	435	70	56	45	9	45,5	485	70	56	45	9	52	430	70	56	45	9	46	485	70	56	45	9	52
1"x1"	470	70	56	45	10	47	545	70	56	45	10	52	460	70	56	45	10	47	545	70	56	45	10	52



cim 289 NR

RIGHT ANGLE BALL VALVE FOR WATER METER INLET WITH NON RETURN VALVE
FEMALE /SWIVEL NUT

cim 290 NR



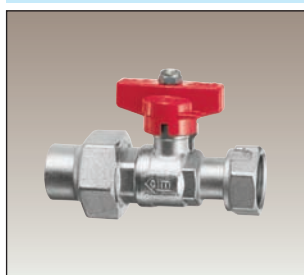
DN	3/4 x 3/4	3/4 x 3/4	3/4 x 1"	1" x 3/4	1" x 1"
Ø mm.	15	20	20	20	20
Box	10	10	10	10	10



cim 260

BALL VALVE - FOR FLARED COPPER PIPE/SWIVEL NUT FOR WATER METER INLET
STRAIGHT TYPE

cim 290 RS



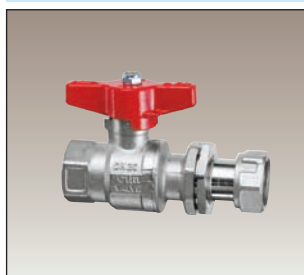
DN	19 x 3/4	DN	19 x 3/4	25 x 1 1/4"
Ø mm.	15			
Box		Box	20	10
Box	15	Cart.	80	40



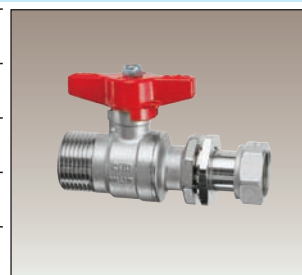
cim 492

BALL VALVE WITH FIXING RING/BACKET FOR WATER METER INLET
FEMALE/SWIVEL NUT

cim 493



DN	3/4 x 3/4	1" x 3/4
Box	30	16
Cart.	120	64



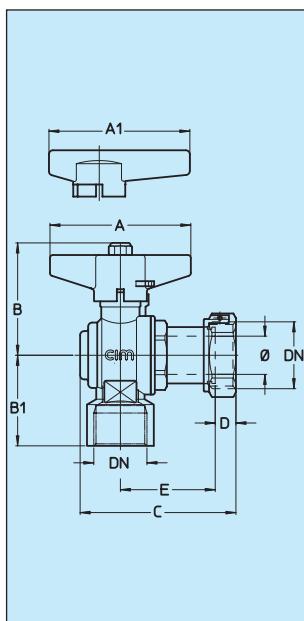
cim 494

BALL VALVE WITH FIXING RING/BACKET FOR WATER METER INLET - POLYETHYLENE/SWIVEL NUT
ALUMINIUM HANDLE

cim 494 OT



PE x DN	25 x 3/4	32 x 3/4
Box	15	15
Cart.	60	60



DN	Cim 289 NR					Cim 290 NR					DN	Cim 260					DN	Cim 290 RS							
	Grms.	A	B	BI	D	E	Grms.	A	B	BI		D	E	Grms.	A	B		C	D	Grms.	A	B	BI	D	E
3/4x3/4	435	70	56	45	9	43	435	50	52,5	35	9	46	3/4x19"	530	50	52	72	9	19"x3/4"	520	50	52,5	45	9	48
3/4x1"	470	70	56	45	10	47	-	-	-	-	-	-	-	-	-	-	-	-	25"x1 1/4"	550	70	60	62	11	48
1"x3/4	435	70	56	45	9	43	435	70	56	45	9	43	-	-	-	-	-	-	-	-	-	-	-	-	
1"x1"	470	70	56	45	10	47	470	70	56	45	10	47	-	-	-	-	-	-	-	-	-	-	-	-	
DN	Cim 492					Cim 493					DN	Cim 494					DN	Cim 494 OT							
	Grms.	A	B	C	D	-	Grms.	A	B	C		D	-	Grms.	A	B		C	D	Grms.	A1	B	C	D	-
3/4x3/4	350	70	56	98	9	-	340	70	56	99	9	-	25"x3/4"	550	70	56	102	9	25"x3/4"	580	70	56	102	9	-
1"x3/4	540	70	56	105	9	-	505	70	56	101,5	9	-	32"x3/4"	600	70	56	105	9	32"x3/4"	630	70	56	105	9	-



BALL VALVES FOR WATER METER WITH TAMPER PROOF NUT

PATENT PENDING

The CIMBERIO ball valves for water meter can be supplied with special wing handles (F20) or square caps (C20) equipped with tamper proof nut

cim 204/F20

BALL VALVE FOR WATER METER WITH TAMPER PROOF NUT

cim 204/C20



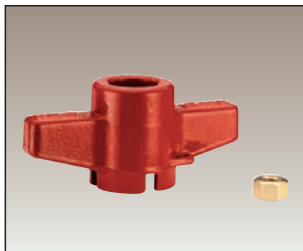
DN	1/2	3/4	3/4	1"	1"	1"	1 1/4"	1 1/4"	1 1/2"	2"
	x	x	x	x	x	x	x	x	x	x
	3/4	3/4	1"	3/4	1"	1 1/4"	1"	1 1/2"	2"	2"
Ø mm.	15	15	20	20	20	25	32	32	40	50



cim 961

ASSEMBLY KIT TAMPER PROOF NUT

cim 962



Ø mm.	15 - 20 - 25	32	40 - 50
mm.	70	85	100



cim 960

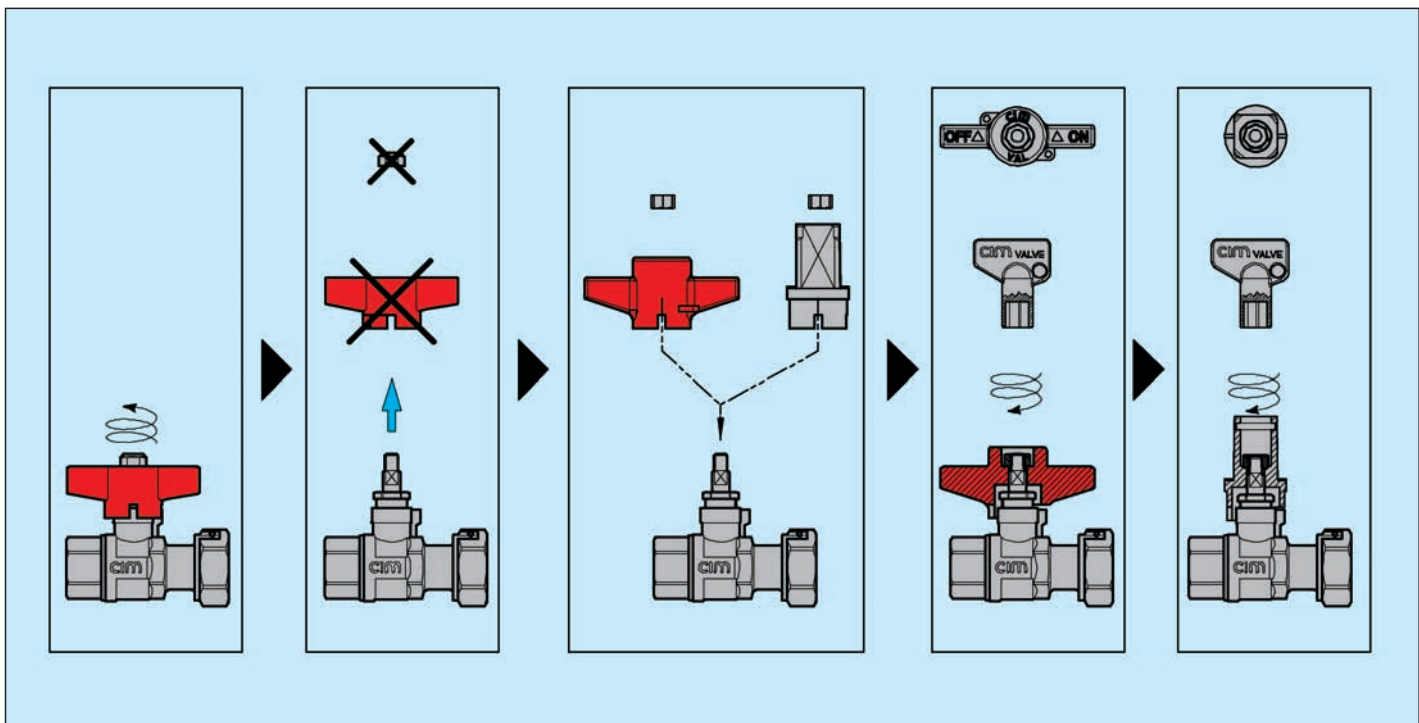
KEY FOR TAMPER PROOF NUT



DN valve	15 - 20 - 25	32	40 - 50
----------	--------------	----	---------



ASSEMBLY SCHEME BUTTERFLY HANDLE / HEAD SQUARE CONTROL WITH TAMPER-PROOF NUT



WATER METER OUTLET BALL VALVES



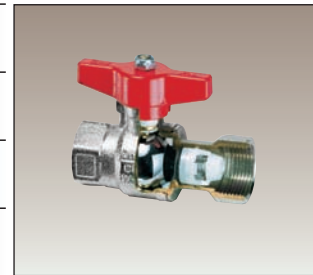
cim 256

BALL VALVE - NON RETURN VALVE FEMALE/FEMALE FOR WATER METER OUTLET
FEMALE/FEMALE

cim 356



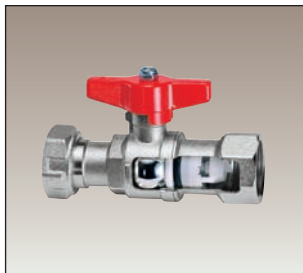
DN	1/2	3/4	1"	1 1/4"	1 1/2"	2"
Ø mm.	15	20	25	32	40	50
Box	30	20	15	10	6	3



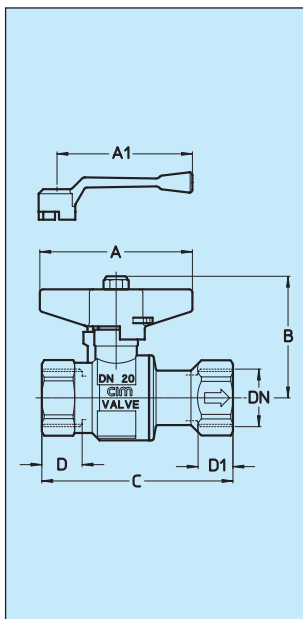
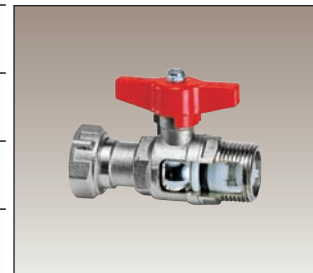
cim 304

BALL VALVE - NON RETURN VALVE FOR WATER METER OUTLET
FEMALE/SWIVEL NUT

cim 305



DN	3/4x1/2	3/4x3/4	1"x3/4	1"x1"		
Ø mm.	15	15	20	20		
Box	30	30	16	16		

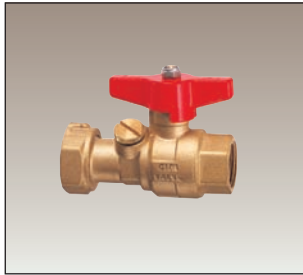


DN	Cim 256 - Cim 356							Cim 304						Cim 305						
	Grms.	A	A1	B	C	D	D1	DN	Grms.	A	B	C	D	D1	Grms.	A	B	C	D	D1
1/2	240	50	80	52	75	17	15	3/4x1/2	285	50	52	78	9	15	270	50	52	73	9	17
3/4	400	70	100	56	88	18,5	16	3/4x3/4	310	50	52	84	9	16	275	50	52	72	9	16
1"	645	70	100	60	107	21	20	1"x3/4	460	70	56	96	10	16	420	70	56	84	10	18
1" 1/4	980	85	120	73	117	22,5	17	1"x1"	505	70	56	103	10	20	460	70	56	86	10	20
1" 1/2	1485	100	150	89	139	23	19	The spring loaded non return valve opens with a pressure of 10 mbar (0,14 psi)												
2"	2350	100	150	96	170	26,5	20													

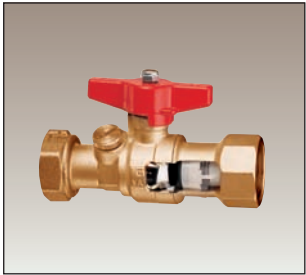
cim 303

Cim 303 BALL VALVE WITH 30° DRAIN SWIVEL NUT/FEMALE FOR WATER METER OUTLET
Cim 303 NR BALL VALVE WITH 30° DRAIN SWIVEL NUT/FEMALE WITH NON RETURN VALVE

cim 303 NR



DN	3/4x1/2	1"x3/4	1 1/4"x1"	The non return valve is KIWA - WRC - NF - DVGW approved
Ø mm.	15	20	25	
Box	30	20	10	



cim 303 PE

Cim 303 PE BALL VALVE - WITH 30° DRAIN SWIVEL NUT/POLYETHYLENE
Cim 313 NROT BALL VALVE WITH DRAIN AND NON RETURN VALVE-BRASS HANDLE

cim 313 NROT



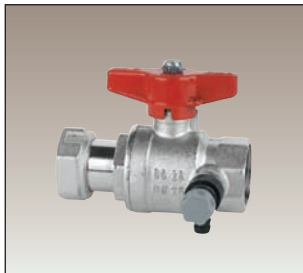
DN x PE	3/4x15	3/4x20	3/4x25	1"x25	1"x32
Ø mm.	15	15	15	20	20
DN	3/4x1/2	3/4x3/4	The drain cock is fixed on the valve body.		



cim 210

Cim 210 BALL VALVE WITH DRAIN - SWIVEL NUT/FEMALE
Cim 210 BR BALL VALVE WITH DRAIN - SWIVEL NUT/FEMALE - FIXING RING/BACKET

cim 210 BR



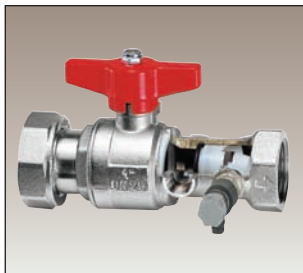
DN	3/4x1/2	3/4x3/4	1"x3/4	1"x1"	1 1/4"x1"	1 1/2"x1 1/4"
Ø mm.	15	20	20	25	25	32
Box	10	10	15	15	5	5



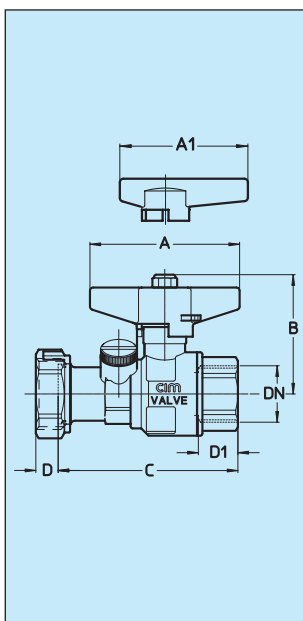
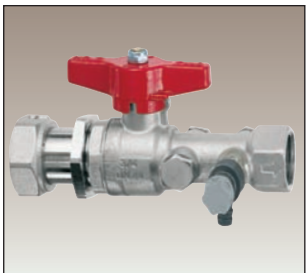
cim 211

Cim 211 BALL VALVE W. DRAIN-4 TEST P. NON RET. VALVE SW. NUT/FE
Cim 211 BR BALL VALVE W. DRAIN-4 TEST P. NON RET. VALVE SW. NUT/FE.-FIX. RING/BR.

cim 211 BR



DN	3/4x1/2	3/4x3/4	1"x3/4	1"x1"	1 1/4"x1"
Ø mm.	15	20	20	25	25
Box	25	15	15	10	5



DN	Cim 303						Cim 303 NR						Cim 303 PE						Cim 313 NROT						
	Grms.	A	B	C	D	D1	Grms.	A	B	C	D	D1	Grms.	A	B	C	D	D1	Grms.	A	B	C	D	D1	
3/4x1/2	295	50	52	76	9	17	315	50	52	90	9	15	-	-	-	-	-	-	-	-	-	-	-	-	-
1"x3/4	440	70	56	84	10	18,5	455	70	56	104	10	16	-	-	-	-	-	-	-	-	-	-	-	-	-
1 1/4"x1"	755	70	60	101	11	21	755	70	60	126	11	20	-	-	-	-	-	-	-	-	-	-	-	-	-
3/4x20	-	-	-	-	-	-	-	-	-	-	-	-	400	50	52	80,5	9	21	-	-	-	-	-	-	-
3/4x25	-	-	-	-	-	-	-	-	-	-	-	-	430	50	52	82,5	9	22	-	-	-	-	-	-	-
1"x25	-	-	-	-	-	-	-	-	-	-	-	-	535	70	56	88	10	22	-	-	-	-	-	-	-
1"x32	-	-	-	-	-	-	-	-	-	-	-	-	615	70	56	93	10	25	-	-	-	-	-	-	-
1/2x1/2	-	-	-	-	-	-	-	-	-	-	-	-	-	-	-	-	-	-	370	70	52	90	9	15	
3/4x3/4	-	-	-	-	-	-	-	-	-	-	-	-	-	-	-	-	-	-	395	70	52	96	9	16	
DN	Cim 210						Cim 210 BR						Cim 211						Cim 211 BR						
	Grms.	A	B	C	D	D1	Grms.	A	B	C	D	D1	Grms.	A	B	C	D	D1	Grms.	A	B	C	D	D1	
3/4x1/2	365	50	52	75	9	-	400	50	52	79	9	-	455	70	52	112,5	9	15	490	70	52	116,5	9	15	
3/4x3/4	475	70	56	79	9	-	525	70	56	84,5	9	-	570	70	56	119	9	16	620	70	56	124,5	9	16	
1"x3/4	515	70	56	80	10	-	565	70	56	85	10	-	610	70	56	120	10	16	665	70	56	125	10	16	
1"x1"	680	70	60	91	10	-	750	70	60	98	10	-	810	70	60	125	10	15	870	70	60	132,5	10	15	
1 1/4"x1"	770	70	60	91	11	-	790	70	60	115	11	-	900	70	60	125	11	15	910	70	60	135,5	11	14	
1 1/2"x1 1/4"	1185	85	60	91	11	-	1210	85	60	91	11	-	-	-	-	-	-	-	-	-	-	-	-	-	

cim 211PE

Cim 211 PE
Cim 311 NR

BALL VALVE WITH NON RETURN VALVE-SWIVEL NUT/POLYETHYLENE
BALL VALVE WITH NON RETURN VALVE-SWIVEL NUT/MALE

cim 311NR



DN	3/4x1/2	3/4x3/4			3/4x25	1"x25
Ø mm.	15	15			20	20
Box Cim 211 PE					10	10
Box Cim 311 NR	10	10				



cim 212

Cim 212
Cim 213

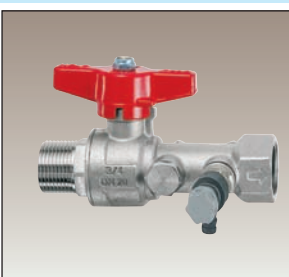
BALL VALVE W. DRAIN-4 TEST POINTS AND NON RET. VALVE-FE./FE.
BALL VALVE W. DRAIN-4 TEST POINTS AND NON RETURN VALVE-MA./FE.

cim 213



DN	1/2x1/2	3/4x3/4	1"x1"
Ø mm.	15	20	25
Box	15	10	10

The 1/4" drain cock is steerable.
The 1/4" plug is in brass material.



cim 619

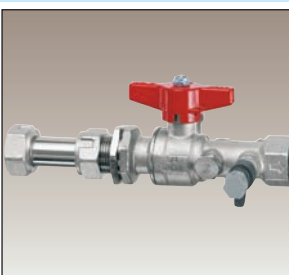
Cim 619
Cim 496

BALL VALVE - WITH STRAINER SWIVEL NUT/FEMALE
BALL VALVE W. DRAIN-4 TEST P. NON RET. VALVE - EXT. FITTING/SWIVEL NUT

cim 496



DN	3/4x1/2	3/4x3/4	1"x3/4	1"x1"	1 1/4"x1"
Ø mm.	15	20	20	25	25
Box Cim 619	10	10	10	10	10
Box Cim 496		10	10		



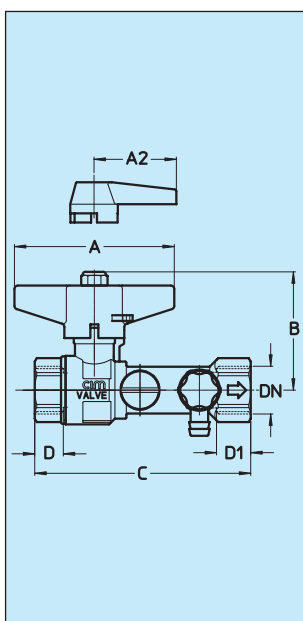
cim 270

BALL VALVE WITH DOUBLE 30°DRAIN AND NON RETURN VALVE FIXING RING/BRAKET
STRAIGHT OR ANGLE INSTALLATION - BRASS HANDLE

PATENTED



DN	3/4x1/2	ANGLE	STRAIGHT	
Ø mm.	15			
Box	10			
Cart.	40			



DN	Cim 212						Cim 213						Cim 270												
	Grms.	A	B	C	D	D1	Grms.	A	B	C	D	D1	DN	Grms.	A	B	C	D	D1						
1/2x1/2	370	70	52	95	12,5	15	375	70	52	107	17	15	3/4x1/2	600	70	56	110	9	13						
3/4x3/4	505	70	56	102	12,5	16	505	70	56	115	18	16													
1"x1"	710	70	60	111	14	15	700	70	60	125	21	15													
DN	Cim 619						Cim 496						Cim 311 NR						Cim 211 PE						
	Grms.	A	B	C	D	D1	Grms.	A	B	C	D	D1	DN	Grms.	A2	B	C	D	D1	Grms.	A	B	C	D	D1
1/2x1/2	405	70	52	95	12,5	15	-	-	-	-	-	-	3/4x1/2	285	45	43	72	17	9	-	-	-	-	-	
3/4x3/4	575	70	56	102	12,5	16	810	70	56	110	9	16	3/4x3/4	290	45	43	71	16	9	-	-	-	-	-	
3/4x1"	585	70	56	105	10	18,5	-	-	-	-	-	-	3/4x25	-	-	-	-	-	-	660	70	56	125	-	-
1"x3/4	-	-	-	-	-	-	830	70	56	110	10	16	1"x25	-	-	-	-	-	-	700	70	56	126	-	-
1"x1"	740	70	60	119	10	21	-	-	-	-	-	-	-	-	-	-	-	-	-	-	-	-	-	-	
1 1/4"x1"	760	70	60	119	11	21	-	-	-	-	-	-	-	-	-	-	-	-	-	-	-	-	-	-	

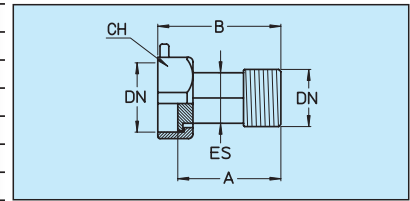
FITTINGS FOR WATER METER

cim 750

FITTING FOR WATER METER - SWIVEL NUT/MALE



DN	Grms.	A	B	ES	CH
3/4x1/2	75	37	45	17	30
1"x3/4	125	46	55	23	37
1 1/4"x1"	205	47	56	29	46
1 1/2"x1 1/4"	320	57	69	36	53
2x1 1/2"	450	67	79	43,5	64
2 1/2"x2	890	77	95	55	84

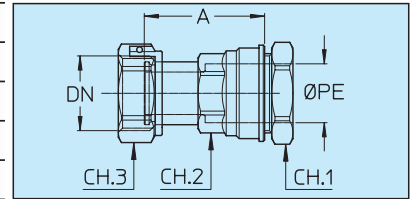


cim 751

FITTING SWIVEL NUT/POLYETHYLENE

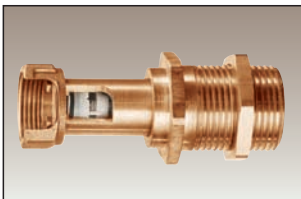


DN	Ø PE	Grms.	Box	Cart.	A	CH1	CH2	CH3
3/4	16	210	50	200	42,5	32	25	31
3/4	20	180	50	200	42,5	32	25	31
1	25	230	50	200	45	39	30	37
1,1/4	32	310	50	200	50	49	38	47

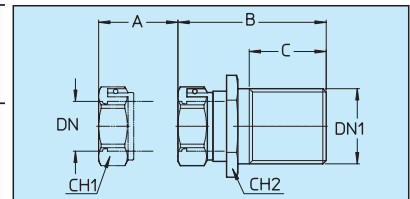


cim 752

EXTENSION FITTING FOR SWIVEL NUT/MALE - WITH NON RETURN VALVE

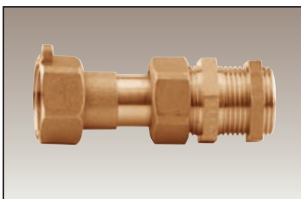


DN	DN1	Grms.	Box	Cart.	A	B	C	CH1	CH2
3/4	1	288	50	200	65,5	35	34	31	40

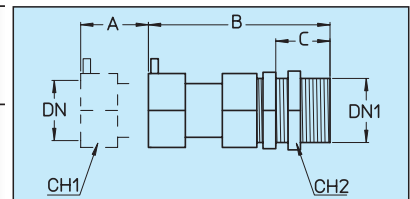


cim 753

EXTENSION FITTING FOR SWIVEL NUT/MALE - FIXING RING/BACKET



DN	DN1	Grms.	Box	Cart.	A	B	C	CH1	CH2
3/4	3/4	245	50	200	30	65	22	30	30

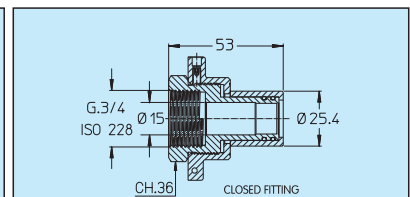
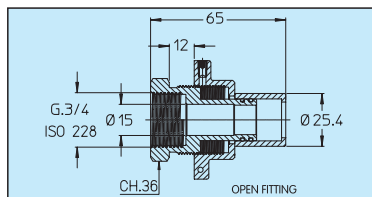


cim 754

EXPANSION FITTING

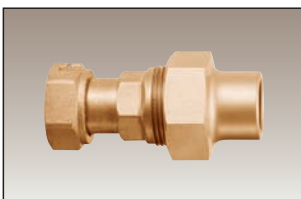


DN	Grms.	Box	Cart.
3/4	288	25	100



cim 755

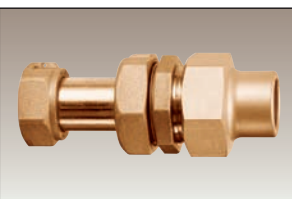
FITTING SWIVEL NUT/FLARED COPPER PIPE WITH NON RETURN VALVE



DN	Box	Cart.
3/4x19	50	200

cim 756

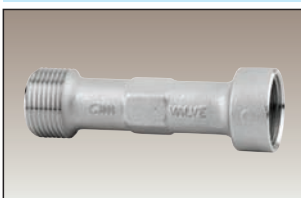
EXPANSION FITTING FOR SWIVEL NUT/FLARED COPPER PIPE



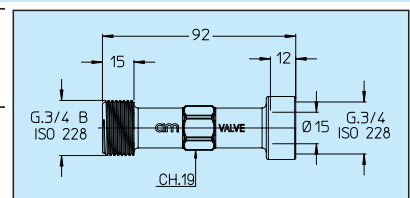
DN	Box	Cart.
3/4x19	50	200

cim 757

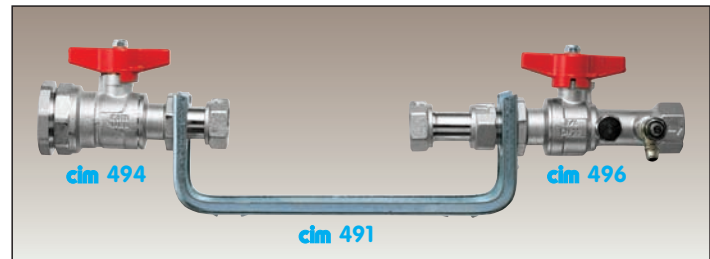
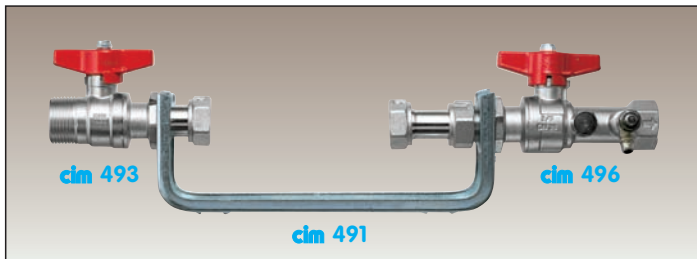
SPACER FITTING FLOW RATE STABILIZER



DN	Box	Cart.
3/4x3/4	25	100

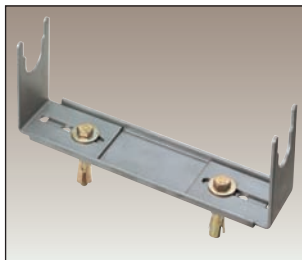


BRACKETS FOR WATER METERS



cim 490

ADJUSTABLE BRACKET FOR WATER METERS

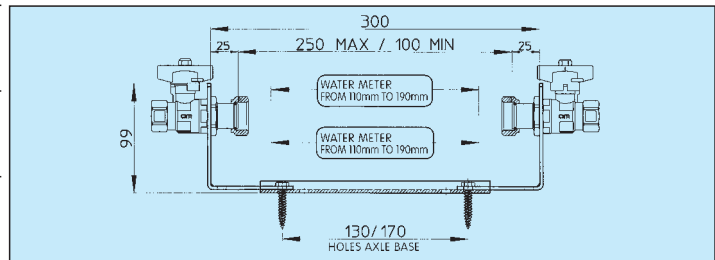


Box

10

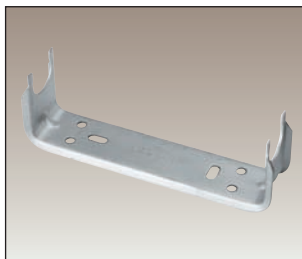
Cart.

40



cim 491

BRACKET FOR WATER METERS

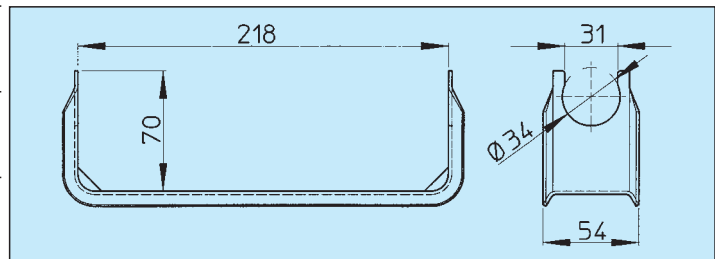


Box

5

Cart.

50



MODULAR SYSTEMS FOR WATER-METER CONNECTION



cim 489

Meterboxes and Meterdoors in PUR for 1-4 water meters. On request available with anti-freeze pad for cold weather.

cim 488

Underground meter boxes in PUR for 1-6 water meters. Wide range of spare parts is available: spheroidal cast iron traps, anti-freeze pad, stainless steel manifolds, elevated level and base units.



The set of the valves shown in the picture is only for demonstration purposes. The Cimberio valves series for water meter offers a wide range of proposals to meet the most various needs.

cimDROP

Unmeasured Flow Reducer



valve
cimberio[®]
technological solutions



cim 270 UFR*

3/4 x 1/2

Unmeasured flows

All domestic water meters are unable to accurately measure very low flow rates, specifically those below 15 litres/hour. This inaccuracy increases with the life of the water meter.

These microscopic losses may originate from:

- 💧 Dripping of taps, faulty flush boxes, microscopic intakes or leaks, whether visible or not, in the plant downstream from the water meter.
- 💧 Low flow rates at the end of the filling cycle of flush boxes, accumulation tanks and generally whenever floating valves are present.
- 💧 Small losses in the plant upstream from the water meter.

The impossibility of measuring these microscopic flows or their incorrect measurement accounts for a lost revenue for the water company, due to a percentage of 5-10% of the total water supplied being lost due to unmeasured flows, depending on the type of water meter installed.

The loss of profits resulting from inaccurate measurement can lead to very substantial economic losses because the unmeasured flow generally falls with the highest fee brackets.

In addition, the use of this device guarantees full compliance with Law no. 36/1994 concerning the management of water resources, also known as Galli Law, which is the most important law in the field of water management and whose purpose is to determine a full compliance with the "principles of efficiency, effectiveness and affordability of services, to regulate the determination and regular updates of fees".

A more accurate measurement helps water suppliers to increase their investments in distribution, which consequently optimizes the use of water as "resource" and reduces the overall management costs of the distribution network.



Unmeasured flow reducer

The **cimDROP** Cim 270 UFR* ball valve is equipped with a simple and smart product that is installed on the user intake next to the water meter. It converts microscopic flows into flow pulses that can be then measured by the water meter.

The **cimDROP** Cim 270 UFR* ball valve:

- enables when the flow rate is below the detection and measuring threshold of the water meter;
- adjusts the water flow by continuously converting microscopic flows into pulsing flows that are large enough to be measured by the water meter;
- when the flow rate increases and reaches approximately 30 litres/h, UFR* operates as an ordinary check valve.

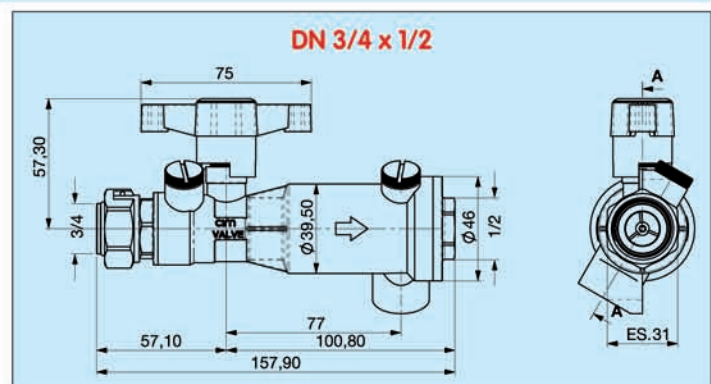
The validity of the **cimDROP** Cim 270 UFR* ball valve has been demonstrated through a series of tests carried out in the laboratories of several Italian and foreign water suppliers, which have confirmed that the installation of this device helps to increase the turnover of distribution networks by approximately 5-10%.

In addition to offering the same features of UFR*, the **cimDROP** Cim 270 UFR* ball valve provides several interesting technical and practical advantages, like:

- The special design of the valve body enables it to be installed both online or in square line, or in both configurations simultaneously, by simply changing the location of the stop cap of the unused port.
- The lockable and sealable handle in brass is ideal for all installations, including sumps.
- The two 1/4" pressure points, situated respectively upstream from the ball valve and downstream from the anti-pollution UFR device, at an angle of 30° to enhance ergonomics, enable:
 - a full control of anti-pollution device;
 - the plant discharge downstream from the valve;
 - simplify installation of an additional meter to check the efficiency of the installed water meter.

cim 270 UFR*

BALL VALVE FOR UNMEASURED FLOW REDUCERS (UFR*)



cimDROP

cim 270 UFR*



Benefits

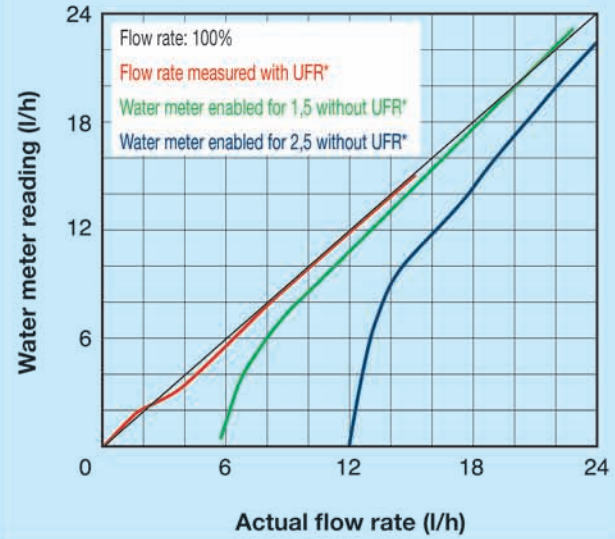
- Minimizes the amount of unmeasured flows to almost zero.
- Enables to measure and charge both visible and invisible microscopic leaks.
- Significantly increases the revenue of water supplies up to 10%.
- Operates as anti-pollution check valve preventing the entrance of contaminants re-circulated from the water network.

The **cimDROP Cim 270 UFR*** ball valve enables:

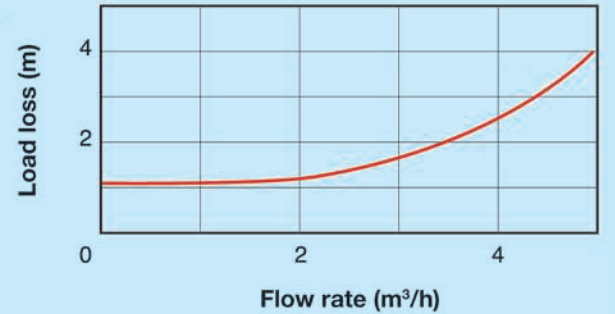
- to reduce installation and management costs;
- to reduce leaks caused by the coupling of multiple parts.



Accuracy of the water meter with or without UFR*



Load loss chart

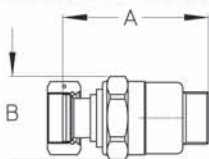


WRAS



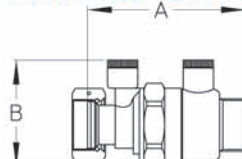
* UFR is licensed by **A.R.I. FLOW CONTROL ACCESSORIES LTD.**

cim750 UFR*



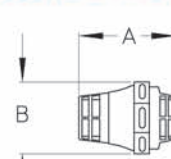
DN	3/4 x 1/2	3/4 x 3/4
A	85	77
B	42	42
Grms.	287	300

cim758 UFR*



DN	3/4 x 3/4
A	79
B	57
Grms.	337

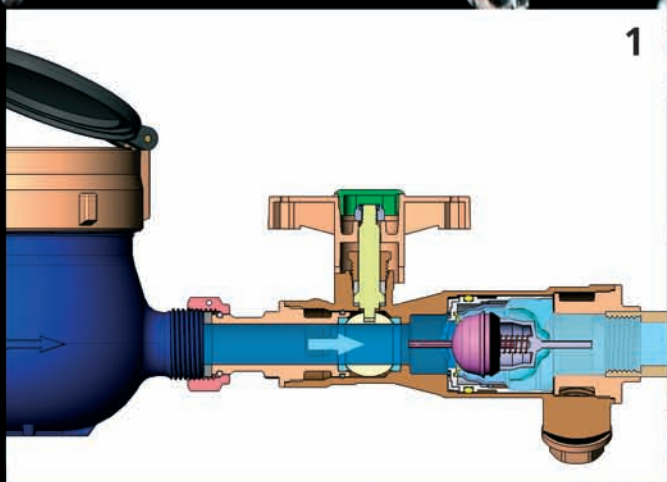
cim759 UFR*



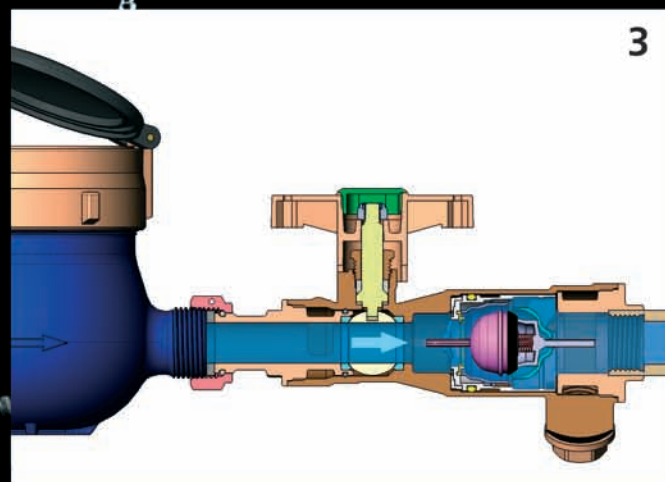
DN	1/2x1/2	3/4x3/4	1/2x3/4	3/4x1/2
A	80	81	81	81
B	64	64	64	64
Grms.	123	136	130	130

cimDROP

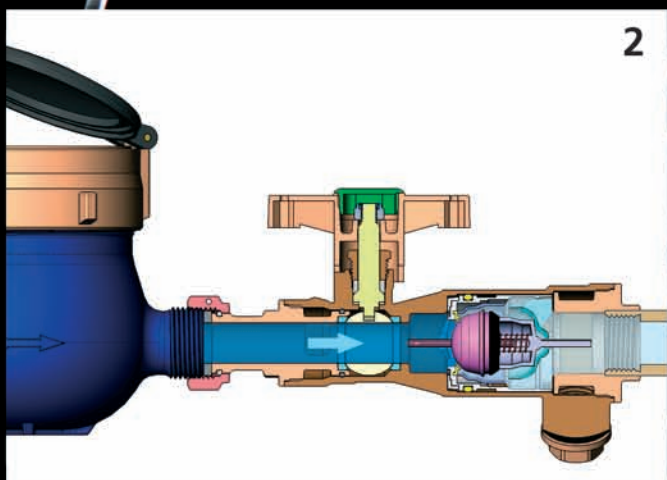
cim270 UFR*



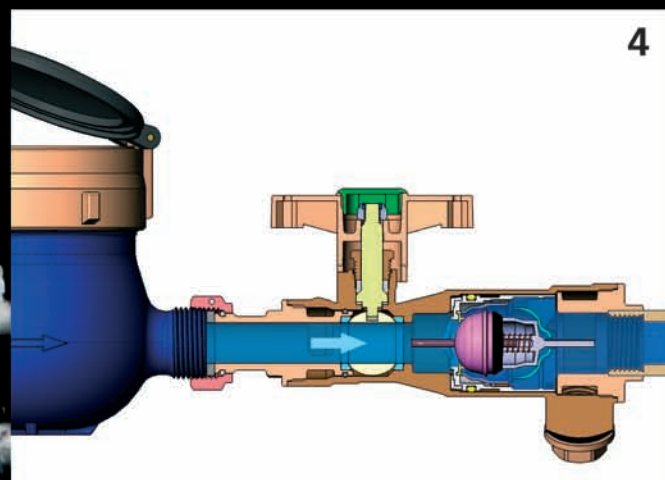
UFR* closed: the downstream pressure falls due to the presence of a leak.



UFR* opens: the downstream pressure reaches the value of the upstream one and balances it. The water meter measures the low flow rate.



UFR* still closed: the pressure fall downstream causes the shutter to start moving.



UFR* closes once more: the upstream and downstream pressures have the same value.

Reporto di analisi 48SI00045

Analysis report 48SI00045

Prodotto Product	Materiali destinati al contatto con acqua potabile Materials in contact with drinking water
Rif. di tipo Type ref.	Cim 50, Cim 74ACR, Cim 80A, Cim 30A, Cim 341, Cim 247, Cim 11CR, Cim 620, rappresentativi di tutti i modelli indicati al punto 2 representative of all models listed at point 2
Cliente Customer	CAV. UFF. GIACOMO CIMBERIO S.p.A. Via Torchio, 57 - 28017 San Maurizio d'Opaglio (NO) - Italy
N° BEM IMQ IMQ internal ref.	44525 del 25/06/2008
Norme di prova Ref. Standards	DM 174/2004, DM 34 del 21.3.73 (SO della GU n. 104 del 20 Aprile 1973), Reg. CE 1935/2004 GUCE L 338 del 13/11/04
Laboratorio Laboratory	IMQ S.p.A. Via Quintino, 43 20138 Milano tel.: +39 02 507321 fax: +39 02 5073271 e-mail: info@imq.it
Pagine Pages	Questo rapporto ha 14 pagine e 0 allegati (Pagine compresa la presente: 14) This test report has 14 pages and 0 annex (Pages with this one: 14)
Limitazioni Limitations	I risultati delle analisi, qui riportati, si riferiscono esclusivamente agli esemplari esaminati e descritti nel presente rapporto. Soltanto riproduzioni integrali di questo Rapporto di prova sono permesse senza l'autorizzazione scritta dell'IMQ. Analysis results, written here, refers only to tested objects that are described in this report. Only full reproductions of this Test Report are allowed without written authorisation of IMQ. I pareri e le interpretazioni qui riportati, non devono essere confusi con certificazione di prodotto prevista nella Guida ISO 65. Opinions and interpretations included, shall not be confused with product certification as intended in ISO/IEC Guide 65.
Milano, 02 Ottobre 2008 / Milan, October 02 2008	
 Il laboratorio Settore 48 - Laboratory Department 48 - ATEX Francesco Esposito	

SOMMARIO / SUMMARY

SOMMARIO / SUMMARY	2
1 INFORMAZIONI SPECIFICHE / SPECIFIC INFORMATION	3
2 OGGETTO IN ANALISI / OBJECT UNDER ANALYSIS	4
2.1 DOCUMENTI DEL CLIENTE / DOCUMENTS OF CUSTOMER	4
2.1.1 SARACINESCHE / GATE VALVES	4
2.1.2 VALVOLE DI BILANCIAMENTO E INDUSTRIALI / BALANCING AND INDUSTRIAL VALVES	4
2.1.3 RACCORDI / FITTINGS	4
2.1.4 VALVOLE A SFERA / BALL VALVES	4
2.1.5 SOLARE TERMICO / SOLAR THERMAL	5
2.1.6 VALVOLE A SFERA PER ACQUEDOTTISTICA / BALL VALVES FOR WATERWORKS	5
2.1.7 VALVOLE CON ATTUATORE ELETTRICO / ELECTRO-ACTUATED VALVES	5
2.1.8 RUBINETTI DI EROGAZIONE A SFERA E VALVOLE A SFERA SERIE "MINI" / BALL BIBCOCK AND MINI BALL VALVES	5
2.2 IDENTIFICAZIONE IMQ / IMQ IDENTIFICATION	5
2.3 CONDIZIONI DELL'OGGETTO IN ANALISI / OBJECT UNDER ANALYSIS CONDITIONS	5
3 RICONOSCIMENTO DELL'OGGETTO IN ANALISI / OBJECT UNDER ANALYSIS RECOGNITION	5
4 SEQUENZA DELLE ANALISI / ANALYSIS SEQUENCE	5
5 INCERTEZZA DEGLI STRUMENTI UTILIZZATI / USED INSTRUMENTS UNCERTAINTY	6
6 CONFIGURAZIONE DELL'OGGETTO IN ANALISI / OBJECT UNDER ANALYSIS CONFIGURATION	6
7 ANALISI / ANALYSIS	6
7.1 VERIFICA DI CONFORMITÀ ALLE LISTE POSITIVE CE / CONFORMITY TO CE POSITIVE LIST	6
7.1.1 Risultati	6
7.2 DETERMINAZIONE DELLA MIGRAZIONE GLOBALE / OVERALL MIGRATION TESTS	7
7.2.1 Risultati	7
7.3 DETERMINAZIONE DELLA MIGRAZIONE DI COLORANTI / MIGRATIONS OF COLORANTS TEST	8
7.3.1 Risultati	8
7.4 CERTIFICAZIONE SANITARIA: CESSIONE DI METALLI / HEALTH CERTIFICATION: METAL DISPOSAL	8
7.4.1 Risultati	8
7.5 TEST SENSORIALE GUSTATIVO / SENSORIAL TASTE TEST - METHOD F	9
7.5.1 Risultati	9
7.6 DETERMINAZIONE DELLA MIGRAZIONE SPECIFICA DI ACRILONITRILE / SPECIFIC MIGRATIONS OF ACRYLONITRILE TEST	10
7.6.1 Risultati	10
7.7 DETERMINAZIONE DELLA MIGRAZIONE SPECIFICA DI BUTADIENE / SPECIFIC MIGRATIONS OF BUTADIENE TEST	10
7.7.1 Risultati	10
7.8 DETERMINAZIONE DELLA MIGRAZIONE SPECIFICA DI NICKEL E CROMIO - ACCIAI / SPECIFIC MIGRATIONS OF NICKEL, CHROMIUM TEST - STEELS	11
7.8.1 Risultati	11
7.9 CONFORMITÀ AI REQUISITI E/O ALLE SPECIFICHE / REQUIREMENTS AND/OR SPECIFICATIONS CONFORMITY	12
7.9.1 Dichiarazione / Declaration	12
8 FOTOGRAFIE / IMAGES	13

2 Oggetto in analisi / Object under analysis

2.1 Documenti del Cliente / Documents of Customer	Documenti di trasporto n. - - Transport document n. - - Documentazione tecnica dei materiali Data sheet of material Dichiarazione di conformità compositiva delle materie prime che costituiscono gli oggetti in analisi Declaration of conformity of raw materials composition that constitute object under analysis Dichiarazione del cliente: i prodotti seguenti vengono ottenuti con i medesimi materiali degli oggetti in analisi Customer declaration: the following products are produced using the same materials of object under analysis
2.1.1 SARACINESCHE / GATE VALVES	CIM 50CC, 58, 60, 70B, 70BCL, 70BS, 70BSCR, 70BSL, 70BSNCR, 70WOG, 71, 7150, 71/50CC, 71/58.
2.1.2 VALVOLE DI BILANCIAMENTO E INDUSTRIALI / BALANCING AND INDUSTRIAL VALVES	CIM 32, 30, 30PRS, 33ACREA, 33CREA, 33CREARB, 33CREAPRS, 60, 74ACRP, 74ACR/1, 74ACR/2, 74ACRP/1, 74ACRP/2, 74AO, 74AO/1, 74AO/2, 80, 95, 95A, 721, 722, 723, 723L, 727, 727OT, 727OTPRS, 727PRS, 730, 731, 732, 733, 733PRS, 737, 737OT, 737OTPRS, 737PRS, 745, 745PRS, 747, 747OT, 747OTPRS, 747PRS, 748, 748PRS, 787, 787OT, 787OTPRS, 787PRS.
2.1.3 RACCORDI / FITTINGS	CIM 55R, 94, 142, 143, 146, 146F, 147, 148, 240, 243, 341, 342, 343, 344, 417, 417C, 418, 418C, 419, 419C, 420, 420C, 440, 443, 540, 543, 640, 641, 642, 740, 741, 742, 743, 744NR, 746, 750, 751, 752, 753, 754, 755, 756, 757, 840, 841, 842, 2455NR, 3020, 3020C, 3026, 3026C, 3028, 3028C, 3030, 3030C, 3032, 3032C, 3035.
2.1.4 VALVOLE A SFERA / BALL VALVES	CIM 10, 10OT, 11, 11CR, 11CRHS, 11HS, 11NPT, 12, 12CR, 12CR-OT, 12CRSB, 12CR-SI, 12NPT, 12OT, 12SI, 12SB, 14, 14M, 14MHS, 14OT, 14SB, 16, 16CR, 16, 16NPT, 17, 17CR, 17, 17NPT, 23, 25, 25PFR, 28, 27, 28, 28PFR, 46OCF, 47OCF, 63, 64, 65, 66, 85, 86, 87, 91, 92, 125, 126, 126S, 127, 128, 163, 164, 165, 166, 200, 201, 201/12, 201/12CR, 201/14, 201/16, 201/17, 202, 202OC, 202/14, 205FAR, 206, 206/12, 206/12CR, 208/14, 207, 207/12, 207/12CR, 207/14, 208, 208/12, 208/14, 209, 209CR, 209CRPE, 209CRMA, 209CRME, 209CRMA, 209CFE, 209MA, 209MCR, 209MMA, 209MPE, 209/246, 214, 215, 216, 217, 217L, 218, 218BR, 218BR, 218L, 219, 219L, 220, 220FAR, 220L, 220OT, 220/206, 221, 221L, 222, 222L, 223, 223L, 224, 224L, 225, 225L, 226, 226L, 227, 227L, 228, 228L, 229, 229OT, 230, 230OT, 231, 231OT, 232, 232OT, 234, 235, 236, 237, 238, 239, 241, 241L, 242, 242L, 244, 244OT, 245, 246, 248, 249, 262, 263, 264, 265, 267, 280, 281, 282, 285, 286, 291, 300, 300FAR, 301, 301/12, 301/12CR, 301/12FAR, 301/14, 301/16, 302, 302/12FAR, 302/14, 306, 306/12, 306/12CR, 306/14, 307, 307/12, 307/12CR, 307/14, 308, 308/12, 308/14, 309, 309CR, 309CRPE, 309CRMA, 309FAR, 309FE, 309MA, 309/246, 310, 312, 312CR, 312FAR, 312NPT, 314, 316, 316CR, 316, 316NPT, 346, 346FAR, 347, 348, 350, 350L, 351, 351L, 352, 352L, 353, 353SC, 354, 354SC, 355, 355L, 358, 358L, 359, 359L, 360, 360L, 361, 361L, 363, 364, 365, 366, 380, 381, 382, 385, 386, 391, 406, 406/12, 406/12CR, 406/14, 407, 407/12, 407/12CR, 407/14, 408, 408/12, 408/14, 427, 427SL, 460/18, 460/1R, 463, 501CR, 501CROT, 501/246, 502CR, 502FAR, 502/246, 503CR, 503/246, 504CR, 504/246, 505CR, 505/246, 506, 506/12, 506/12CR, 506/14, 507, 507/12, 507/12CR, 507/14, 508, 508/12, 508/14, 530FAR, 531FAR, 535CR, 536CR, 537CR, 538CR, 539CR, 545CR, 546CR, 547CR, 548CR, 549CR, 555CR, 556CR, 557CR, 558CR, 559CR, 563, 570CR, 571CR, 572CR, 573CR, 574CR, 610, 612, 612CR, 613, 613CR, 614, 615, 620, 620FAR, 620MA, 620RB, 621, 622, 622SC, 623, 624, 624SC, 626, 626SC, 627, 627SC, 628, 629, 630, 631, 632, 633, 620, 620L, 621, 621L, 622, 622L, 3154BL, 3154RS, 3150, 3163, 3164, 3165, 3166, 3427, 3427RS, 3463, 3463, 3594, 3594, 15761, 25346A, 25369, A10, A12, A12CR, A14, ABS, A220, A250, A251, A252, A253, A254, A427, B10, B12, B12CR, B14, C3727, C3728, C3729, C3730, C3764S, CH10, CH12, CH12CR, CH14, E85, RED5, REDSMF, RED6, RED6MF, RED6/1, RED6/1MF.

2.1.5 SOLARE TERMICO / SOLAR THERMAL	CIM 12S, 201/12S, 301/12S, 312S, 727OTS, 747OTS.
2.1.6 VALVOLE A SFERA PER ACQUEDOTTISTICA / BALL VALVES FOR WATERWORKS	CIM 198/206, 198/CH13, 199, 199OT, 199/206, 199/CH13, 203, 203OT, 204, 204BR, 204CR, 204CRBR, 204NR, 204OT, 204/206, 204/206, 204/206, 205, 205BR, 205NR, 210, 210BR, 211, 211BR, 211PE, 212, 213, 256, 260, 270, 278, 278OT, 278/206, 283, 283BR, 283NR, 283NRBR, 283/206, 284, 284BR, 284NR, 284NRBR, 287, 287BR, 289, 289BR, 289NR, 290, 290BR, 290NR, 290RS, 303, 303NR, 311NR, 313NR, 303PE, 303RS, 304, 305, 356, 450, 451, 452, 453, 492, 493, 494, 494OT, 496, 619, 2150CRSX, 2151CRDX, 2151CRSX, 2153CRDX, 2153CRSX, 2154CRDX, 2154CRSX.
2.1.7 VALVOLE CON ATTUATORE ELETTRICO / ELECTRO-ACTUATED VALVES	CIM 600RE, 602RE, 603RE, 600RE24, 602RE24, 603RE24, 606, 683, 684, 685, 700, 700RE, 702, 702RE, 702EXT, 702EXTRE, 703, 703RE, 706, 708RE, 710, 710RE.
2.1.8 RUBINETTI DI EROGAZIONE A SFERA E VALVOLE A SFERA SERIE "MINI" / BALL BIBCOCK AND MINI BALL VALVES	CIM 011, 012, 013, 014, 015, 016, 017, 018, 019, 020, 021, 022, 031, 032, 033, 072, 072FAR, 075, 34, 334, 34PL, 34LUC, 34NR, 354NR, 34S, 34RS, 341, 341FAR, 34/1OT, 34/1PL, 34/1PR, 34/1SI, 34/2, 36, 39, 39L, 39LNR, 39NR, 45, 45F, 45FNR, 45L, 46, 46F, 33A1, 336, 34AR, 34PR, 34OT, 34OTAR, 99, 113, 114, 180, 181, 182, 182L, 182LNR, 182XL, 182XLNR, 183, 190, 190/1, 190/2, 191, 192, 192/1, 192/2, 193, 193/1, 193/2, 194, 195, 195/1, 195/2, 271, 272, 273.
2.2 Identificazione IMQ / IMQ Identification	BEM 44525 del 25/06/2008
2.3 Condizioni dell'oggetto in analisi / Object under analysis conditions	Così come fornito dai clienti. / Like so provided by customer. Sono stati ricevuti 8 campioni, marcati / 8 samples have been received, marked Cim 50, Cim 74ACR, Cim 80A, Cim 30A, Cim 341, Cim 247, Cim 11CR, Cim 620. Dettaglio dei campioni analizzati facenti parte dei vari gruppi: Valvole in ottone, ottone nichelato e ottone cromato con fitro e/o aste in acciaio, otturatori HOSTAFORM, guarnizioni in NBR, EPDM, FPM, AF15MA, NA1100, PPS, HNBR e PTFE.
3 Riconoscimento dell'oggetto in analisi / Object under analysis recognition	Non effettuato. Not carried out.
4 Sequenza delle analisi / Analysis sequence	Prova n. 1 / Test n. 1...: Verifica di conformità alle liste positive CE Conformity to CE positive list Prova n. 2 / Test n. 2...: Determinazione della migrazione globale Overall migration tests Prova n. 3 / Test n. 3...: Determinazione della migrazione di coloranti Migrations of colorants test Prova n. 4 / Test n. 4...: Certificazione Sanitaria: cessione di metalli Health certification: metal disposal Prova n. 5 / Test n. 5...: Test sensoriale gustativo metodo F Sensorial taste test - method F

cimUNDERGROUND

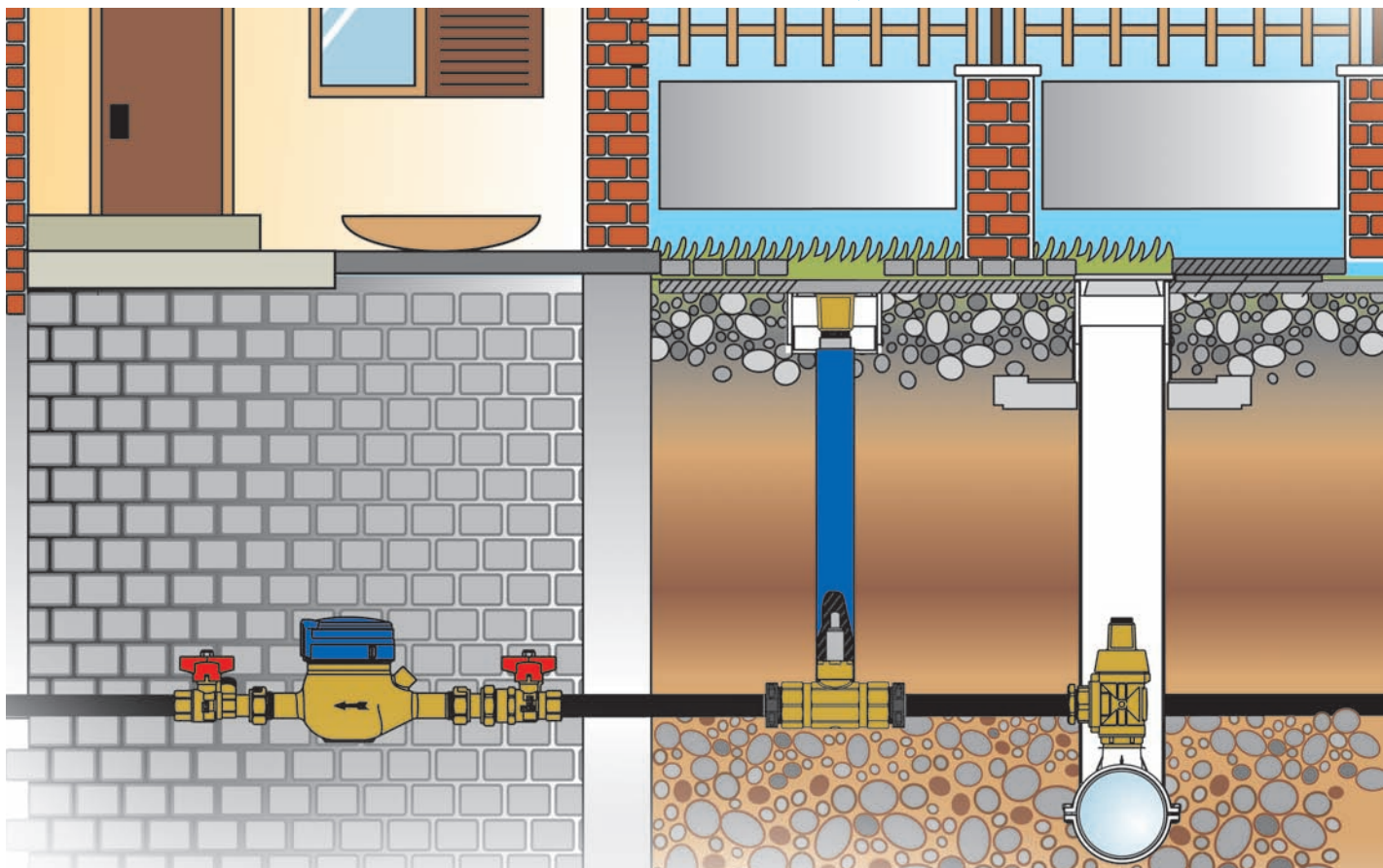
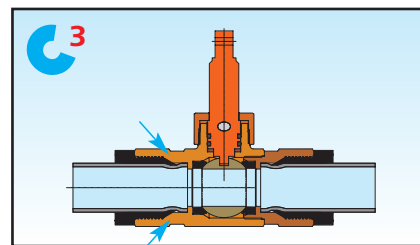
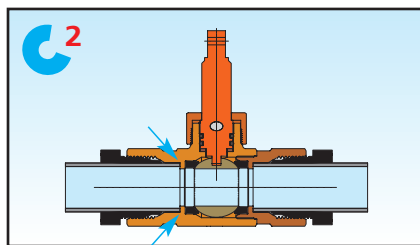
UNDERGROUND INTERCEPTING BALL VALVE STAINLESS STEEL BALL AND STEM - "CR" CORROSION RESISTANT BRASS BODY

The underground intercepting ball valves CIMBERIO **cim 450** series have been specifically designed for installation on underground pipes. As a matter of fact, the special **stainless steel stem, the "CR" non dezincifiable brass body, the stainless steel ball**, guarantee the stoutness, the reliability and safety needed by this kind of valves.

The **cim 452** and **cim 453** valves are equipped with an anti-frost drain hole which operates automatically with closed valve.

The ball valves **cim 450** series can be used also with polyethylene pipes, adding the hostaform joint **cim 454**, which enables a quick pipe connection. A perfect coupling valve-polyethylene pipe needs the following steps: **1) De-burr the inside and outside of the pipe, 2) Insert the pipe in the valve with joint until it stops, 3) Fasten**, using a spanner, **the hostaform joint, until it fits tight against the base of the valve end, 4) Coupling is completed**, assuring a quick, safe and lasting connection.

The **cim 450** and **cim 452** valves have parallel threads to ISO 7/1 Rp in 1"1/4 and 1"1/2 sizes, with **cim 454** joint the valves can be connected to polyethylene pipes in 32mm and 40mm (**cim 451** and **cim 453**).



cim 450

Cim 450 UNDERGROUND BALL VALVE "CR" ALLOY F. F. - S.S. STEM/BALL
 Cim 452 UNDERGROUND BALL VALVE "CR" ALLOY WITH DRAIN F. F. - S.S. STEM/ BALL



DN	1 1/4" x 1 1/4"	1 1/2" x 1 1/2"
Ø mm.	25	32
Box	6	5
Cart.	12	10

cim 452



cim 451

Cim 451 UNDERGROUND BALL VALVE "CR" ALLOY POLY. ENDS - S.S. STEM/BALL
 Cim 453 UNDERGROUND BALL VALVE "CR" ALLOY W. DRAIN /POLY. ENDS - S.S. STEM/ BALL



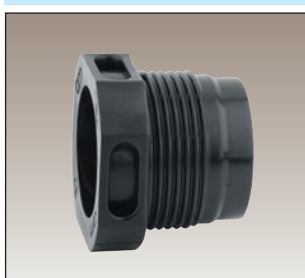
PE	32 x 32	40 x 40
Ø mm.	25	32
Box	6	5
Cart.	12	10

cim 453

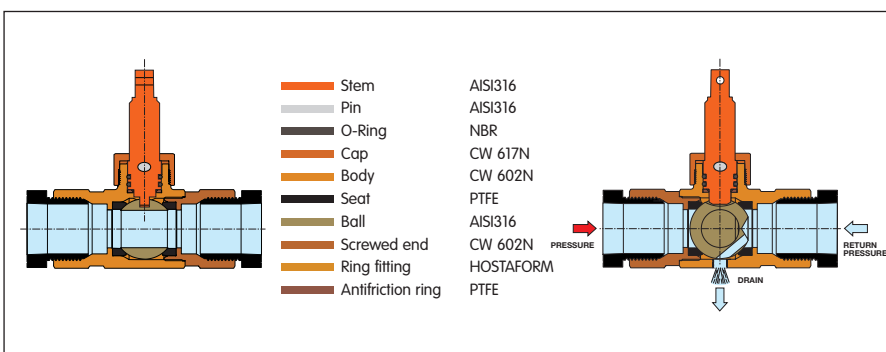


cim 454

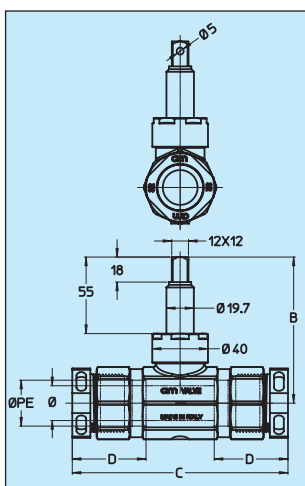
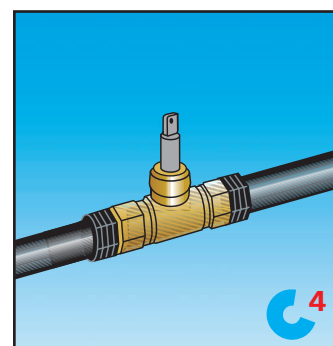
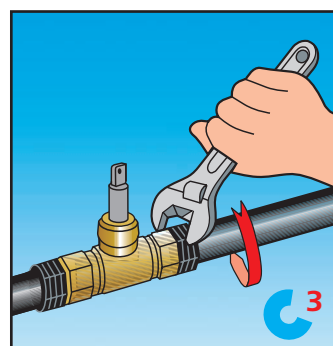
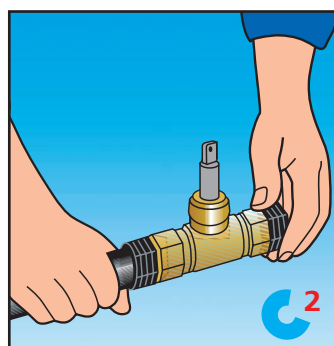
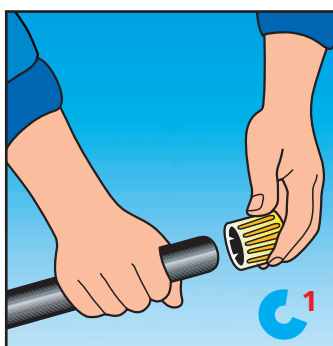
FITTING FOR
 POLYETHYLENE PIPE



DN	1 1/4"	1 1/2"
PE	32	40
Box	10	10
Cart.	100	100



Assembling instructions for cim 451 - 453



DN	Cim 450				Cim 452				Cim 451				Cim 453				Resistance to tensile strength PE pipe Kg. PEBD PN6 PEBD PN10 PEAD PN12,5	
	Grms.	B	C	D	Grms.	B	C	D	DN	Grms.	B	C	D	Grms.	B	C		D
1 1/4" x 1 1/4"	1295	105	120	20	1285	105	120	20	32x32	1346	105	155	53	1336	105	155	53	220 370 480
1 1/2" x 1 1/2"	1966	110	138	20	1950	110	138	20	40x40	2030	110	184	60	2014	110	184	60	390 660 680

cimPLUS

A BALL VALVE FOR EITHER VERTICAL
OR SIDE PIPELINE TAPPING

FULL BORE, IN "CR" CORROSION RESISTANT BRASS

PATENT PENDING

cimPLUS combines in one valve the features of a tapping valve and an end-user control valve.

cimPLUS is a simple, quick, safe and cost-effective connection to hot tap pressurized main pipelines in either direction with no need to cut off water delivery to line-connected end users. Operating cap, knurled nut and stem can be manually assembled, disassembled and changed of configuration for either vertical or side use. No tool is required.

The square cap of **cimPLUS** valve can be equipped with a steel pin "C40", GEOMET 321 coated, which enables to connect the magnetic sensor of the survey equipment to the valve cap.

In case of order for this type of ball valve, you should add to the article number the wording "**C40**".

Square cap 30x30

Right closing

Left closing



cim 2150 CRDX

METRIC ISO/R 262 THREAD

cim 2150 CRSX

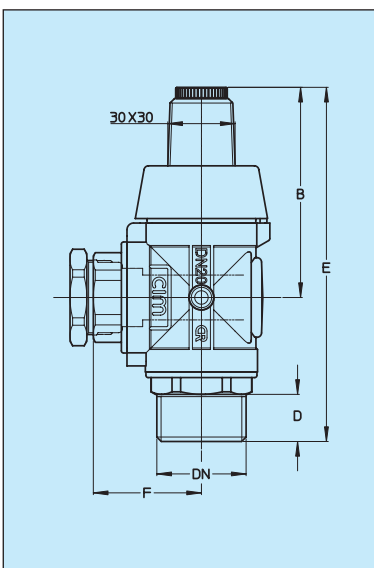
PE x DN	PE 25 - M 40 x 3	PE 32 - M 40 x 3	PE 40 - M 55 x 3	PE 50 - M 55 x 3
Ø mm.	20	25	32	40

cim 2151 CRDX

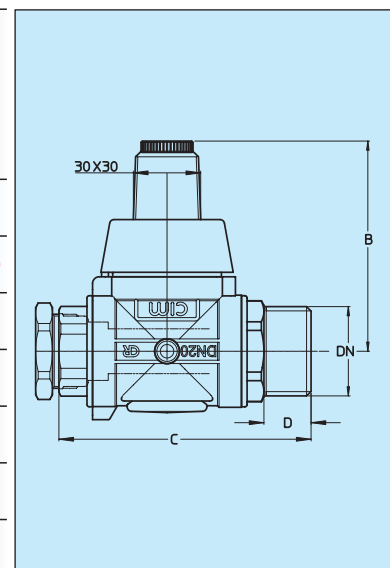
ISO 228/1°G THREAD

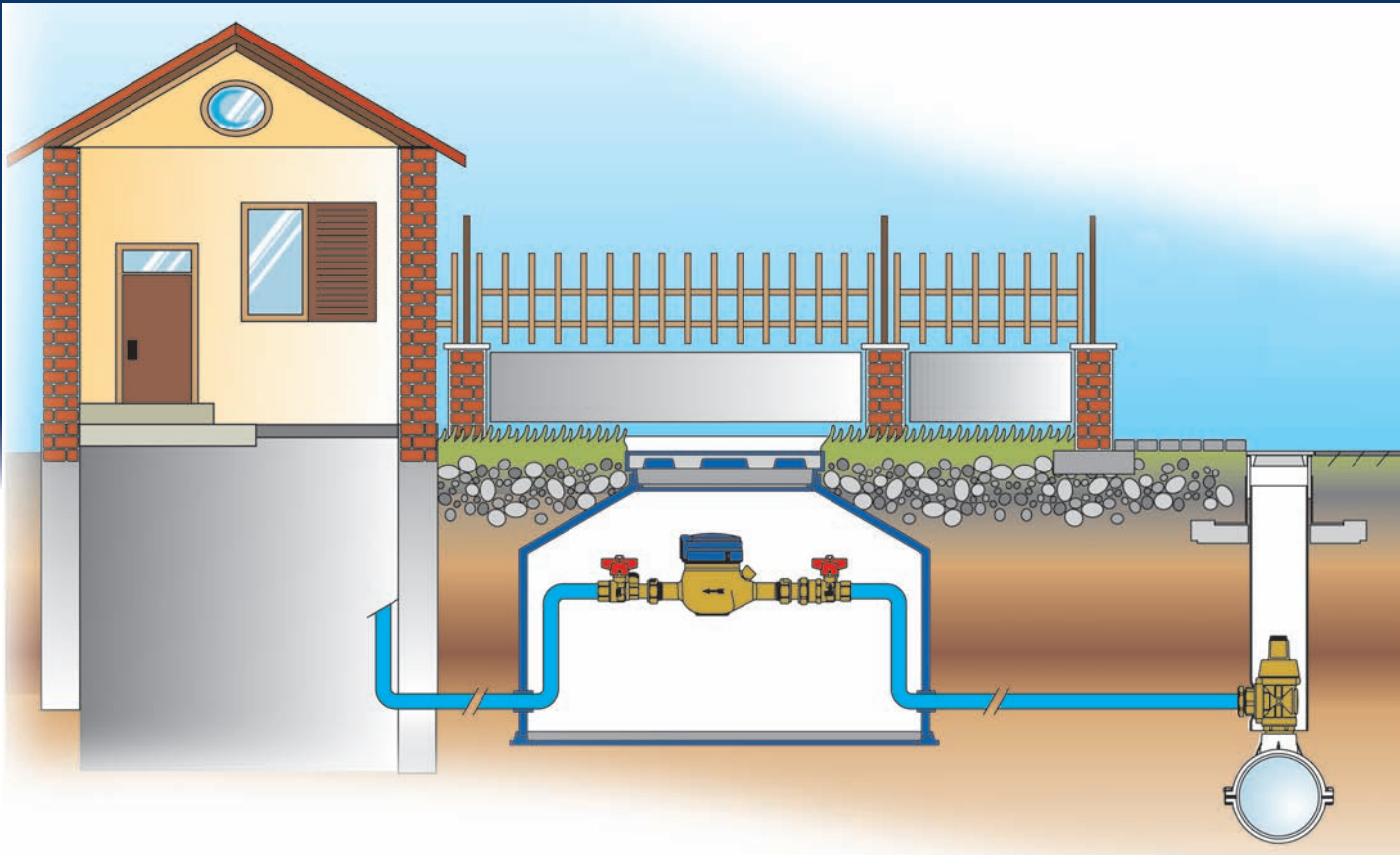
cim 2151 CRSX

PE x DN	25x3/4	25x1"	32x1"	32x1 1/4"	40x1 1/4"	40x1 1/2"	50x1 1/2"	50x2"
Ø mm.	20	20	25	25	32	32	40	40



	PE x DN	25 x M40x3	25 x 1"	32 x M40x3	32 x 1 1/4"	40 x M55x3	40 x 1 1/4"	50 x M55x3	50 x 1 1/2"
Cim 2150 CRDX Cim 2150 CRSX	Grms.	1670	-	2275	-	3755	-	5745	-
Cim 2151 CRDX Cim 2151 CRSX	Grms.	1680	1680	2280	2275	3825	3760	5760	5690
B		94	94	101	101	112	112	122	122
C		112,5	112,5	124	128	148	149	172	174
D		21	21	21	25	25	26	26	28
E		158,5	158,5	170	174	195	196	219	221
F		48	48	55	55	65	65	75	75





Square cap 30x30 Right closing Left closing

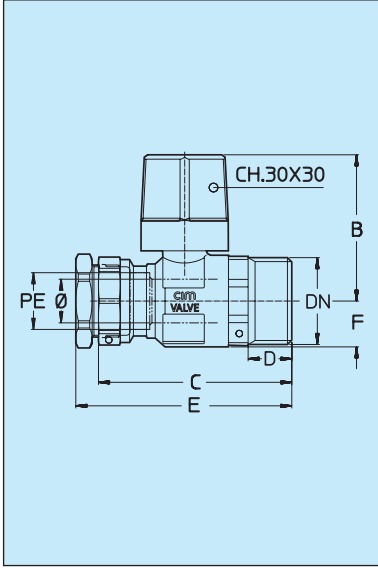


cim 2153 CRDX METRIC ISO/R 262 THREAD **cim 2153 CRSX**

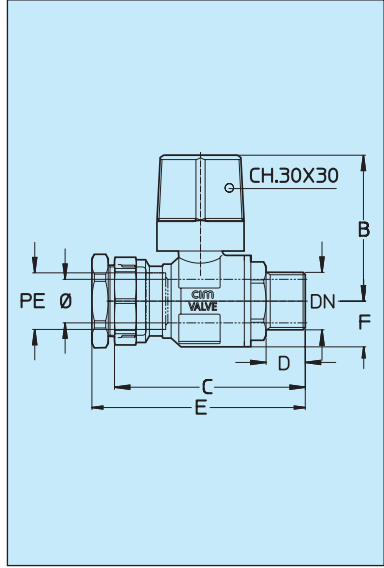
PE x DN	PE 25 - M 40x3	PE 32 - M 40x3	PE 40 - M 55x3	PE 50 - M 55x3
Ø mm.	20	25	32	40

cim 2154 CRDX ISO 228/1°G THREAD **cim 2154 CRSX**

PE x DN	25x3/4	25x1"	32x1"	32x1 1/4"	40x1 1/4"	40x1 1/2"	50x1 1/2"	50x2"
Ø mm.	20	20	25	25	32	32	40	40



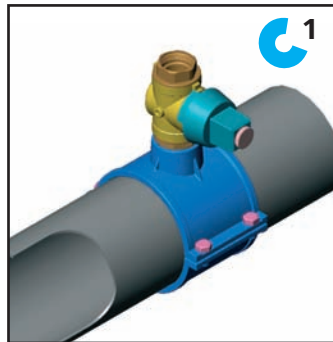
	PE 25 x DN M40x3 x 3/4	PE 25 x DN M40x3 x 1"	PE 32 x DN M40x3 x 1"	PE 32 x DN M55x3 x 1 1/4"	PE 40 x DN M55x3 x 1 1/4"	PE 40 x DN M55x3 x 1 1/2"	PE 50 x DN M55x3 x 1 1/2"	PE 50 x DN M55x3 x 2"
Cim 2153 CRDX	Grms. 775	-	980	-	1885	-	2300	-
Cim 2153 CRSX								
Cim 2154 CRDX	Grms. 750	760	980	990	1845	1780	2200	2300
Cim 2154 CRSX								
B	66	66	69	69	93	93	98	98
C	87,5	86,5	99	97,5	115	115	126,5	123,5
D	18	18	20	19	23,5	26	25	21
E	99	97	111	110	150	138	157	152,5
F	21,5	21,5	25,5	25,5	30,5	30,5	35,5	35,5



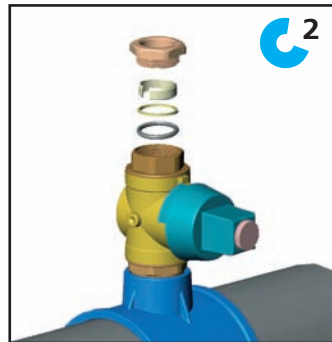
CIMPLUS

Simple, quick and safe installation to pressurized main pipelines in either direction with no need to cut off water delivery to line-connected end users.

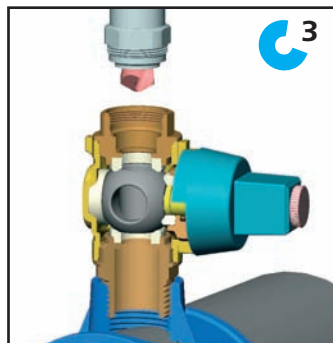
Assemble the CIMPLUS valve on the tapping saddle in its final position.



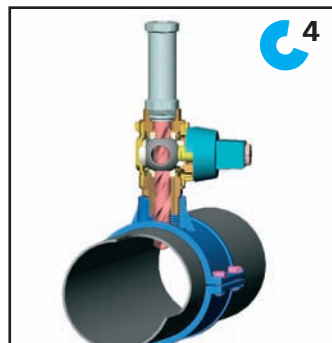
Disassemble the PE pipe connection leaving the O'ring in place.



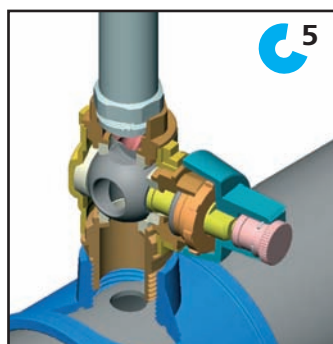
Open the CIMPLUS valve to smoothly insert the tapping tool.



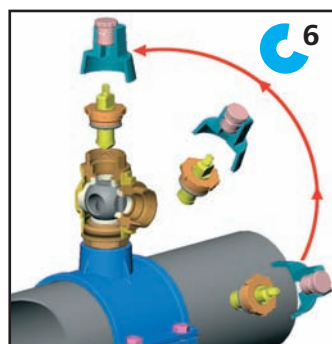
Install the tapping tool on the CIMPLUS valve and tap the main pipe line.



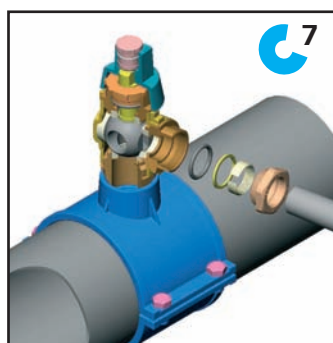
Drive the tapping tool back into its original position and close the CIMPLUS valve. Disassemble the tapping tool. If your tapping tool is not fitted with an automatic flush, make sure it is flushed by manually operating the CIMPLUS valve.



Remove the square cap unscrewing the nut and disassemble the knurled nut and the operating stem. Check the O'ring is in place in the upper part of the valve. Assemble the operating stem with the knurled nut. Reassemble the square cap.



Assemble the PE pipe following this order: O'ring, brass ring, clamping ring and gland nut. Insert the PE pipe and screw the gland nut until fully tight. The CIMPLUS valve is now in closed position.



Your tapping is completed. Set the valve open.

