

DEMARRAGE A VIDE POUR
OPTION PART-WINDING
OU ETOILE TRIANGLE

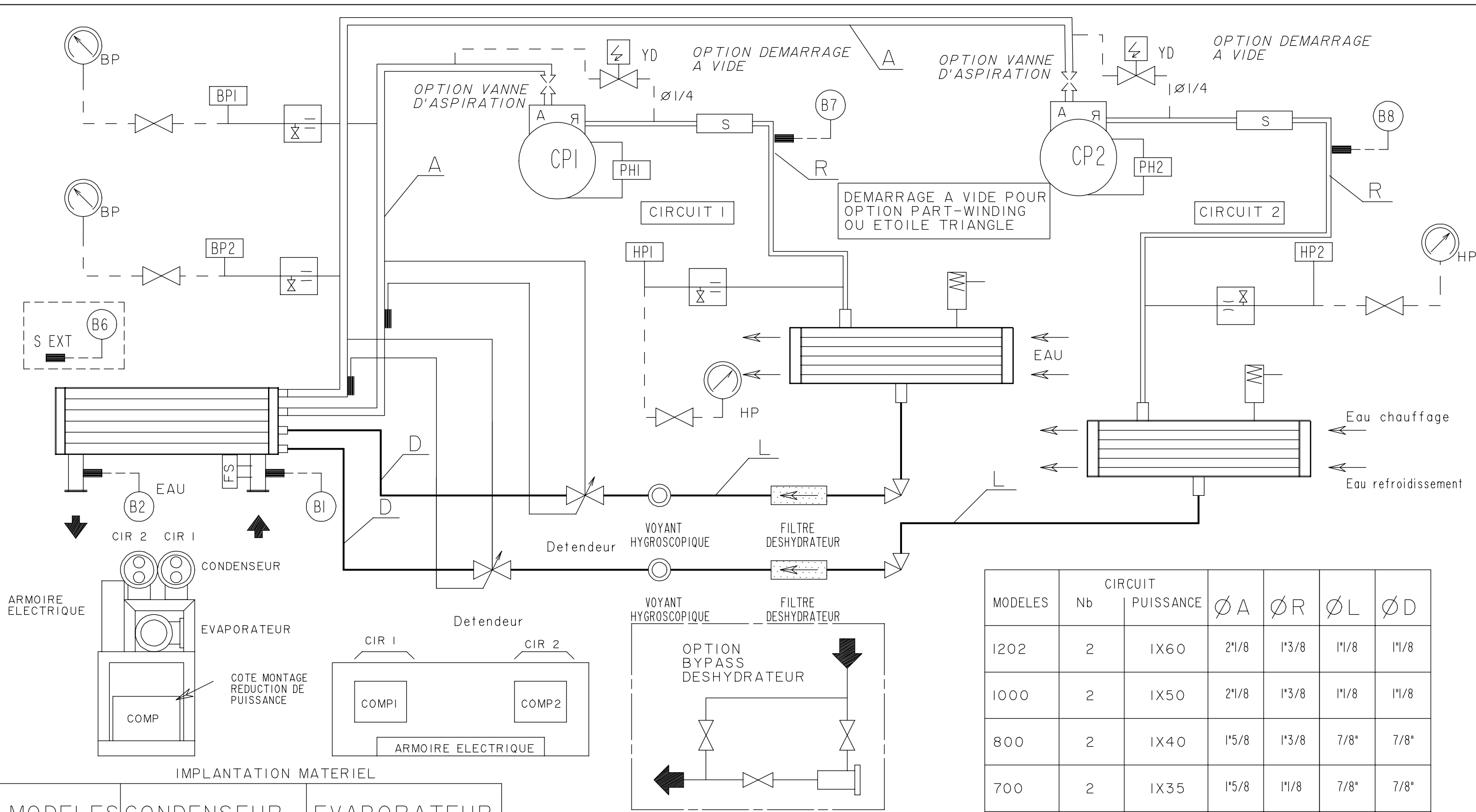
MODELES	PUISSANCE	Ø A	Ø A'	Ø R	Ø R'	Ø L	Ø D
1202	2X60	2 5/8	2 1/8	2 1/8	1 3/8	1 3/8	1 3/8
1000	2X50	2 5/8	2 1/8	2 1/8	1 3/8	1 1/8	1 3/8
800	2X40	2 1/8	1 5/8	1 5/8	1 3/8	1 1/8	1 1/8
700	2X35	2 1/8	1 5/8	1 5/8	1 1/8	1 1/8	1 1/8

IMPLANTATION MATERIEL

MODELES	CONDENSEUR	EVAPORATEUR
1202	FKX 355.30.IR	FYN 273.20.4B.4II
1000	FKX 355.30.IR	FYN 273.20.4B.4II
800	FKX 355.30.IR	FYN 273.20.4B.4II
700	FKX 355.30.IR	FYN 273.20.4B.4II

PG	32	22.03.00	2 HP POUR DEMARRAGE A VIDE ET LRT 700
MODIFIE PAR	IND	NETUDE	DATE
APPAREIL OU UNITE		LRT 700 à 1202	
DESIGNATION		SCHEMA FRIGORIFIQUE	
		2 COMPRESSEURS 1 CIRCUIT	
NUMERO DE COMMANDE:		MATERIE:	
NOTE D'ETUDE:		ECCHELLE	
VERIFIE PAR:		TRAITEMENT	
DESSIN PAR:		MASSE:	
		REMPLECE PAR:	
		REMPLECE:	
		FORMAT	
		NUMERO DE PLAN	
		INDICE	
		A3	
		3956117	
		32	

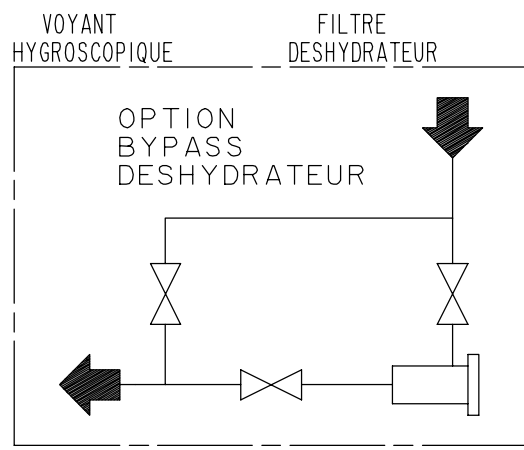




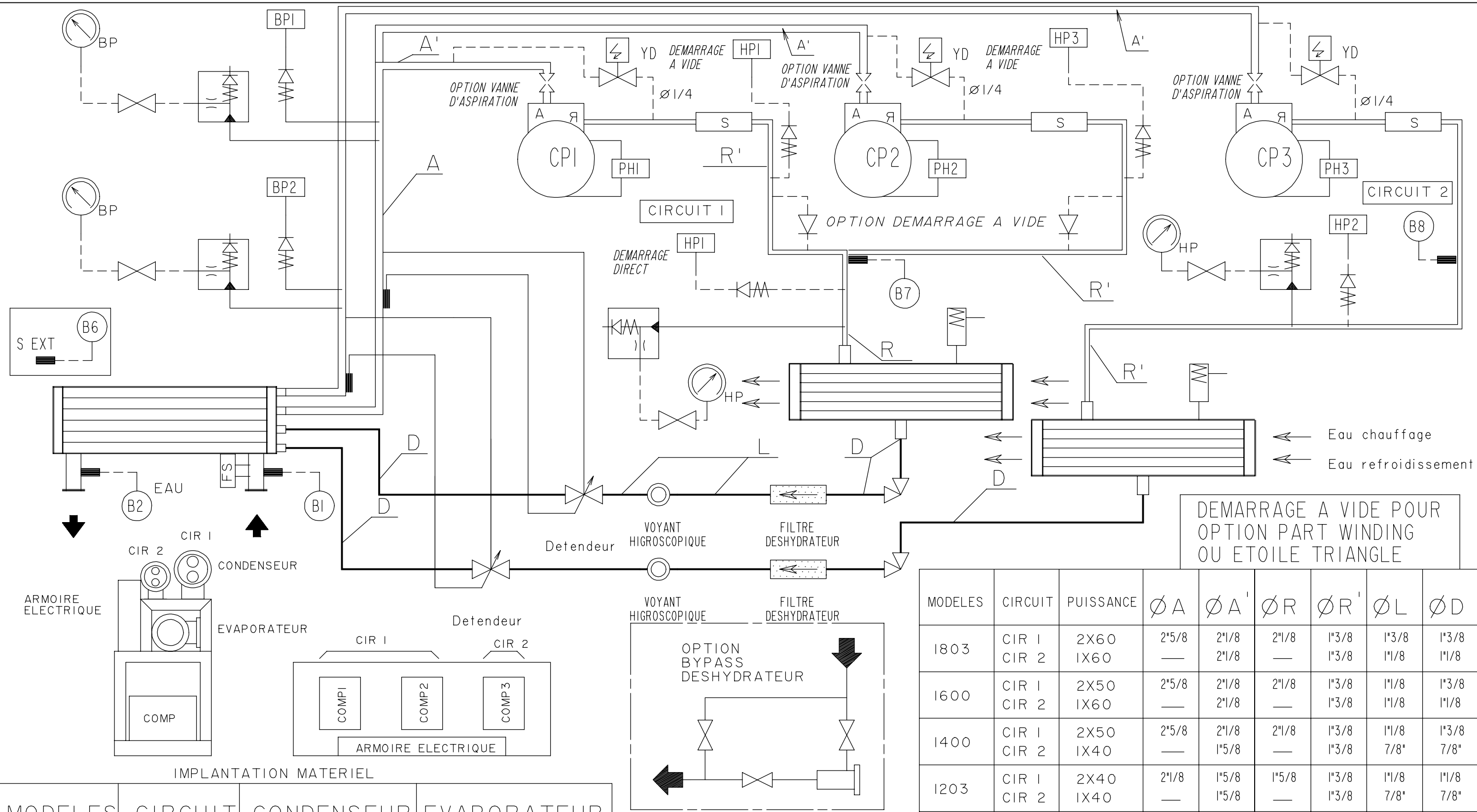
MODELES	CIRCUIT		Ø A	Ø R	Ø L	Ø D
	Nb	PUISSANCE				
1202	2	1X60	2 1/8	1 3/8	1 1/8	1 1/8
1000	2	1X50	2 1/8	1 3/8	1 1/8	1 1/8
800	2	1X40	1 5/8	1 3/8	7/8"	7/8"
700	2	1X35	1 5/8	1 1/8	7/8"	7/8"

IMPLANTATION MATERIEL

MODELES	CONDENSEUR	EVAPORATEUR
1202	2 FKX 273.30.IR	FYN 273.20.222
1000	2 FKX 273.30.IR	FYN 273.20.222
800	2 FKX 219.30.IR	FYN 273.20.222
700	2 FKX 219.30.IR	FYN 273.20.222

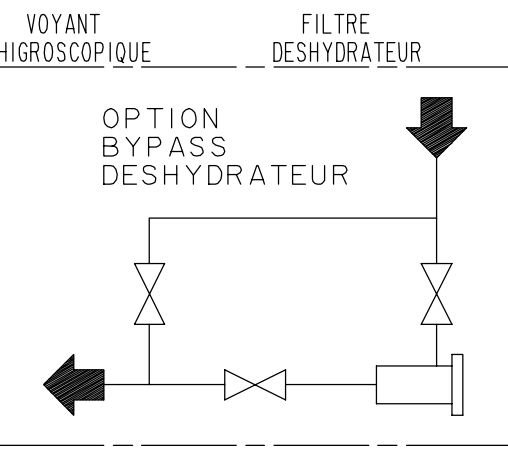


JP	31	25/08/93	MODIFIE LES SONDES POUR LE MRSI-4
MODIFIE PAR	IND	N.ETUDE	DATE
		APPAREIL OU UNITE	MATIERE:
		LRT 700 A 1202	
		DESIGNATION	ECHELLE
		SCHEMA FRIGORIFIQUE	TRAITEMENT
		2 COMPRESSEURS 2 CIRCUITS	MASSE:
		NUMERO DE COMMANDE:	FOLIO
			1/1
		NOTE D'ETUDE:	REPLACE PAR:
		DATE:	REPLACE:
		VERIFIE PAR:	FORMAT
		DATE:	A3
		DESSIN PAR:	NUMERO DE PLAN
		SC	3956033
		DATE:12-03-93	INDICE
			31



DEMARRAGE A VIDE POUR
OPTION PART WINDING
OU ETOILE TRIANGLE

MODELES	CIRCUIT	PUISSANCE	Ø A	Ø A'	Ø R	Ø R'	Ø L	Ø D
1803	CIR 1	2X60	2"5/8	2"1/8	2"1/8	1"3/8	1"3/8	1"3/8
	CIR 2	1X60	—	2"1/8	—	1"3/8	1"1/8	1"1/8
1600	CIR 1	2X50	2"5/8	2"1/8	2"1/8	1"3/8	1"1/8	1"3/8
	CIR 2	1X60	—	2"1/8	—	1"3/8	1"1/8	1"1/8
1400	CIR 1	2X50	2"5/8	2"1/8	2"1/8	1"3/8	1"1/8	1"3/8
	CIR 2	1X40	—	1"5/8	—	1"3/8	7/8"	7/8"
1203	CIR 1	2X40	2"1/8	1"5/8	1"5/8	1"3/8	1"1/8	1"1/8
	CIR 2	1X40	—	1"5/8	—	1"3/8	7/8"	7/8"



IMPLANTATION MATERIEL

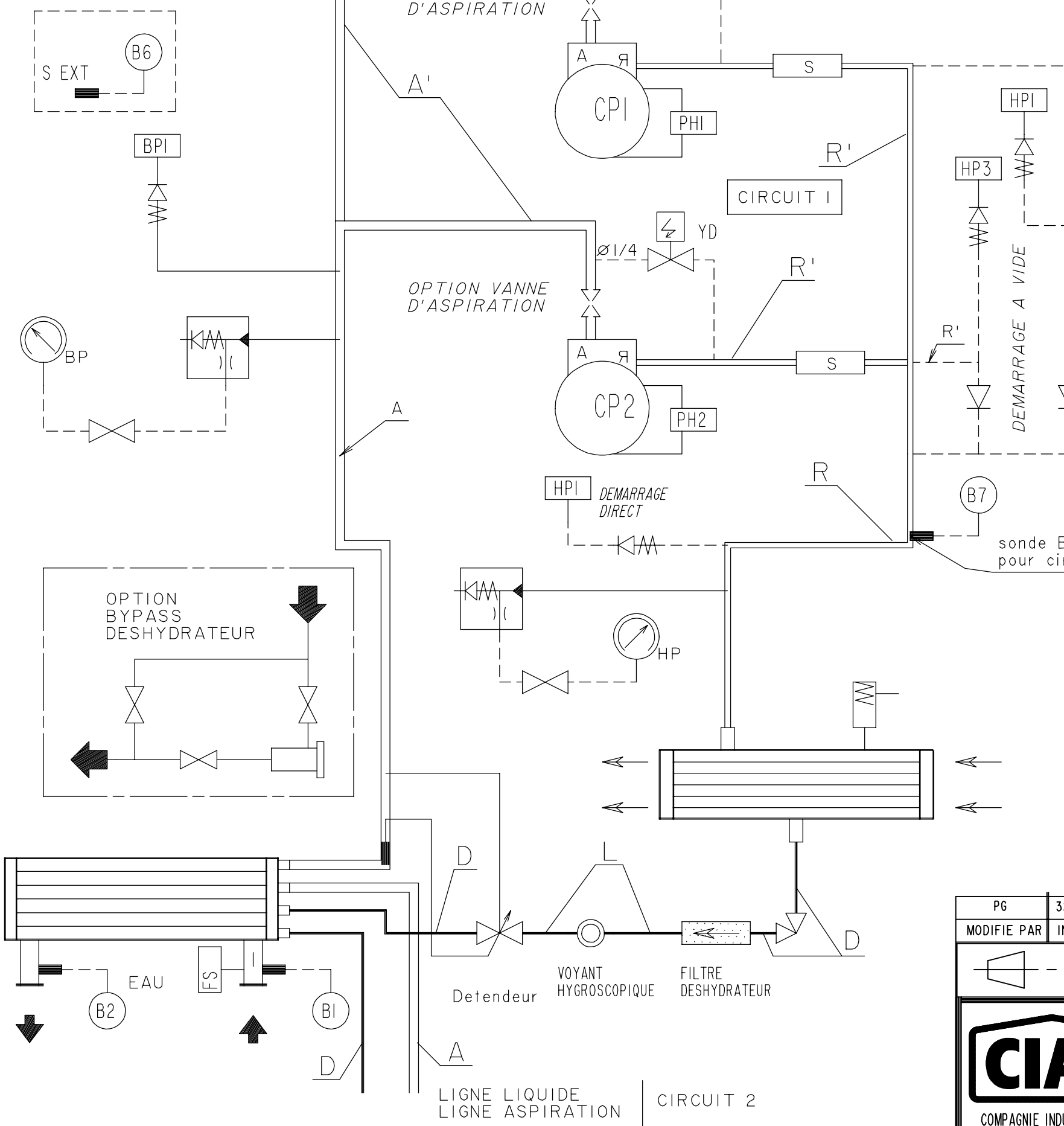
MODELES	CIRCUIT	CONDENSEUR	EVAPORATEUR
1803	CIRCUIT 1	FKX 355.30.IR	FYN 355.20.223
	CIRCUIT 2	FKX 273.30.IR	
1600	CIRCUIT 1	FKX 355.30.IR	FYN 355.20.223
	CIRCUIT 2	FKX 273.30.IR	
1400	CIRCUIT 1	FKX 355.30.IR	FYN 355.20.223
	CIRCUIT 2	FKX 219.30.IR	
1203	CIRCUIT 1	FKX 355.30.IR	FYN 355.20.223
	CIRCUIT 2	FKX 219.30.IR	

PG 32	28.03.00	2 HP POUR DEMARRAGE A VIDE
MODIFIE PAR IND	N.ETUDE	DATE
APPAREIL OU UNITE		MATIERE:
LRT 1203 A 1803		
DESIGNATION		ECHELLE
SCHEMA FRIGORIFIQUE		TRAITEMENT
3 COMPRESSEURS 2 CIRCUITS		MASSE:
NUMERO DE COMMANDE:		FOLIO
		1/1
NOTE D'ETUDE:		REPLACE PAR:
DATE:		REPLACE:
VERIFIE PAR:		3956038.31
DATE:		NUMERO DE PLAN
DESSIN PAR: SC		INDICE
DATE: 16-03-93		A3 3956038 32

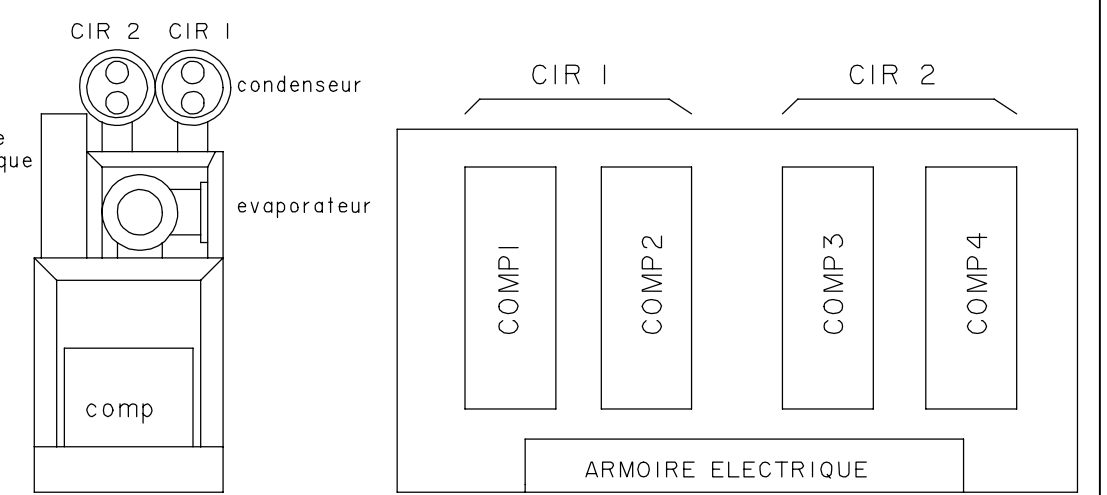


DEMARRAGE A VIDE POUR
OPTION PART WINDING
OU ETOILE TRIANGLE

2 CIRCUITS FRIGORIFIQUES
IDENTIQUES



MODELES	CIRCUIT Nb	Puissance	Ø A	Ø A'	Ø R	Ø R'	Ø L	Ø D
2400	2	2X60	2"5/8	2"1/8	2"1/8	1"3/8	1"3/8	1"3/8
2200	1	2X60	2"5/8	2"1/8	2"1/8	1"3/8	1"3/8	1"3/8
2000	2	2X50	2"5/8	2"1/8	2"1/8	1"3/8	1"1/8	1"3/8
1804	1	2X50	2"5/8	2"1/8	2"1/8	1"3/8	1"1/8	1"3/8
	1	2X40	2"1/8	1"5/8	1"5/8	1"3/8	1"1/8	1"1/8



MODELES	CONDENSEUR	EVAPORATEUR
2400 CIR 1-2	2 FKX 355.30.IR	FYN 406.25.222
2200 CIR 1-2	2 FKX 355.30.IR	FYN 406.25.222
2000 CIR 1-2	2 FKX 355.30.IR	FYN 355.25.222
1804 CIR 1-2	2 FKX 355.30.IR	FYN 355.25.222

PG 32	30.03.00	2 HP POUR DEMARRAGE A VIDE
MODIFIE PAR IND	N.ETUDE	DATE
APPAREIL OU UNITE		MATIERE:
LRT 1804 A 2400		
DESIGNATION		ECHELLE
SCHEMA FRIGORIFIQUE		TRAITEMENT
4 COMPRESSEURS 2 CIRCUITS		TRAITEMENT
NUMERO DE COMMANDE:		REMPLE PAR:
NOTE D'ETUDE:		REMPLE:
VERIFIE PAR:		NUMERO DE PLAN
DESSIN PAR:		INDICE
DATE: 17-03-93		3956039 32

