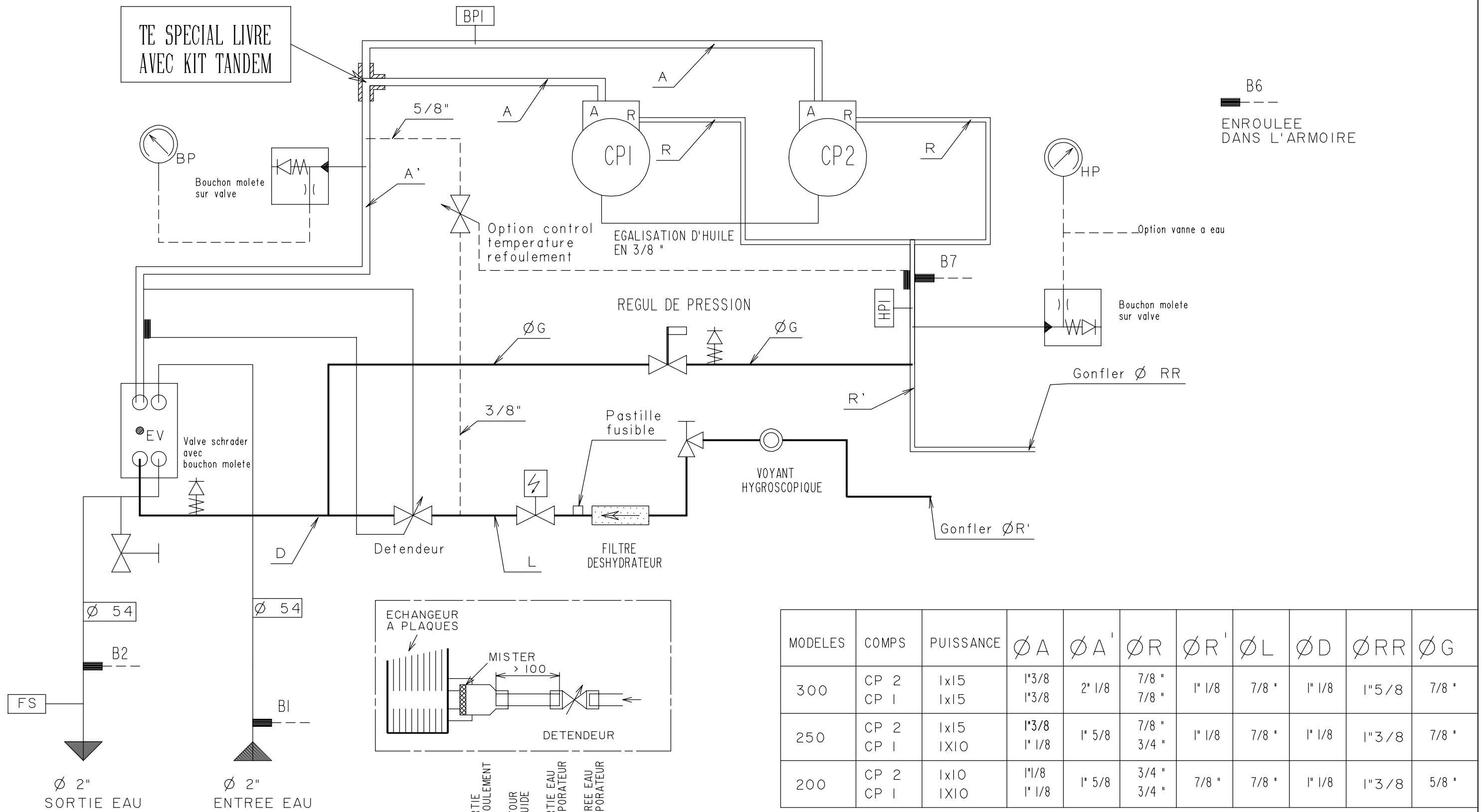


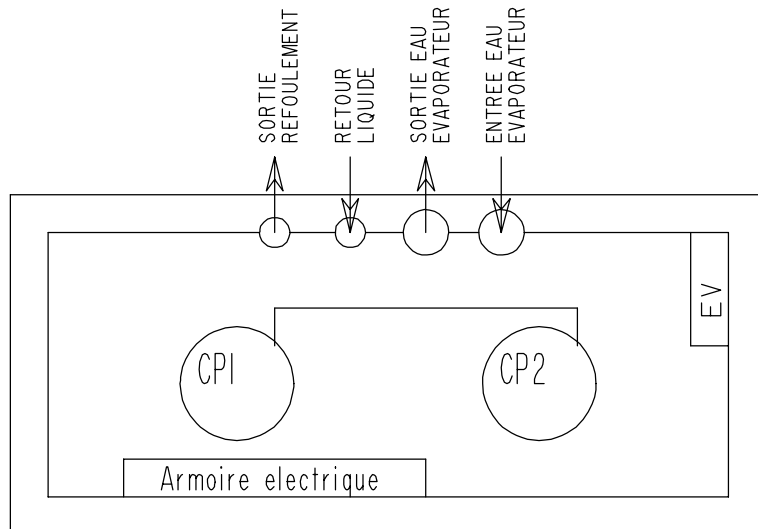
B6
ENROULEE
DANS L'ARMOIRE

TE SPECIAL LIVRE
AVEC KIT TANDEM



B6
ENROULEE
DANS L'ARMOIRE

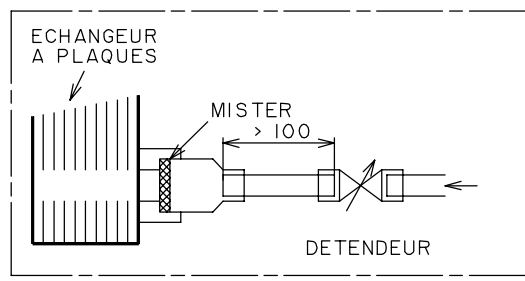
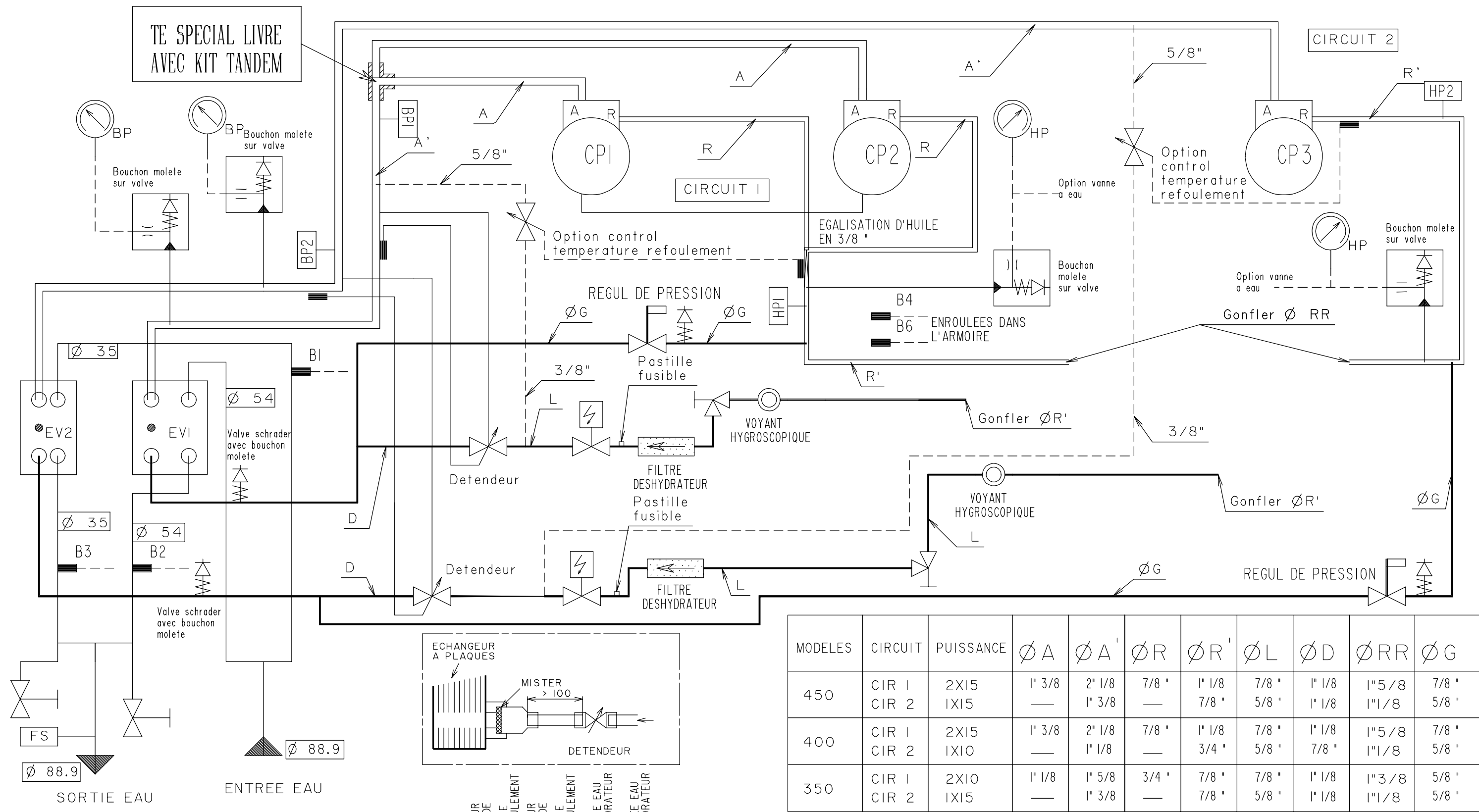
MODELES	EVAPORATEUR
300	14-50
250	14-50
200	14-30



MODELES	COMPS	PUISSANCE	Ø A	Ø A'	Ø R	Ø R'	Ø L	Ø D	Ø RR	Ø G
300	CP 2 CP 1	1x15 1x15	1"3/8 1"3/8	2" 1/8	7/8 " 7/8 "	1" 1/8	7/8 "	1" 1/8	1"5/8	7/8 "
250	CP 2 CP 1	1x15 1x10	1"3/8 1" 1/8	1" 5/8	7/8 " 3/4 "	1" 1/8	7/8 "	1" 1/8	1"3/8	7/8 "
200	CP 2 CP 1	1x10 1x10	1"1/8 1" 1/8	1" 5/8	3/4 " 3/4 "	7/8 "	7/8 "	1" 1/8	1"3/8	5/8 "

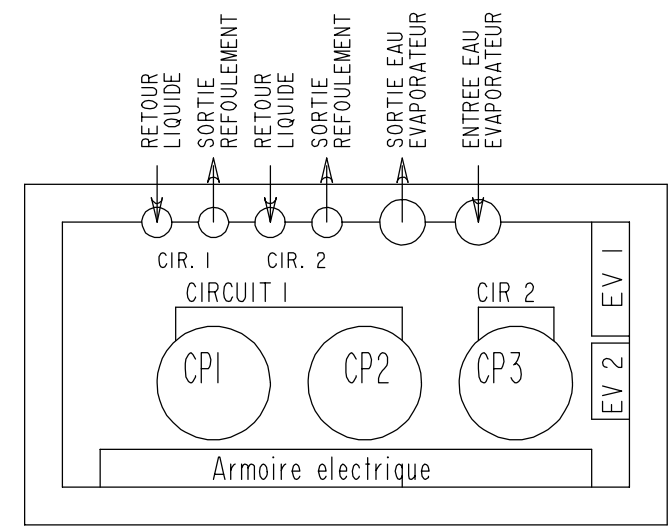
PG	37	08.02.00	MAJ DES SONDAS
MODIFIE PAR	IND	N.ETUDE	DATE
APPAREIL OU UNITE		MATERIE:	
LGN 200 A 300			
DESIGNATION		ECHELLE	TRAITEMENT
SCHEMA FRIGORIFIQUE		FOLIO	MASSE:
2 COMPRESSEURS - 1 CIRCUIT		1/1	REMPLECE PAR:
NUMERO DE COMMANDE:		REMPLECE:	
NOTE D'ETUDE:		DATE:	FORMAT
VERIFIE PAR:		DATE:	NUMERO DE PLAN
DESSIN PAR:		DATE:02/02/94	INDICE
JMB		A3	3956114 37

TE SPECIAL LIVRE
AVEC KIT TANDEM



MODELES	CIRCUIT	PUISSANCE	Ø A	Ø A'	Ø R	Ø R'	Ø L	Ø D	Ø RR	Ø G
450	CIR 1	2X15	1" 3/8	2" 1/8	7/8 "	1" 1/8	7/8 "	1" 1/8	1" 5/8	7/8 "
	CIR 2	1X15	—	1" 3/8	—	7/8 "	5/8 "	1" 1/8	1" 1/8	5/8 "
400	CIR 1	2X15	1" 3/8	2" 1/8	7/8 "	1" 1/8	7/8 "	1" 1/8	1" 5/8	7/8 "
	CIR 2	1X10	—	1" 1/8	—	3/4 "	5/8 "	7/8 "	1" 1/8	5/8 "
350	CIR 1	2X10	1" 1/8	1" 5/8	3/4 "	7/8 "	7/8 "	1" 1/8	1" 3/8	5/8 "
	CIR 2	1X15	—	1" 3/8	—	7/8 "	5/8 "	1" 1/8	1" 1/8	5/8 "

MODELES	CIRCUIT	EVAPORATEUR
450	CIRCUIT 1	14-50
	CIRCUIT 2	M 25-60
400	CIRCUIT 1	14-50
	CIRCUIT 2	M 25-40
350	CIRCUIT 1	14-30
	CIRCUIT 2	M 25-60

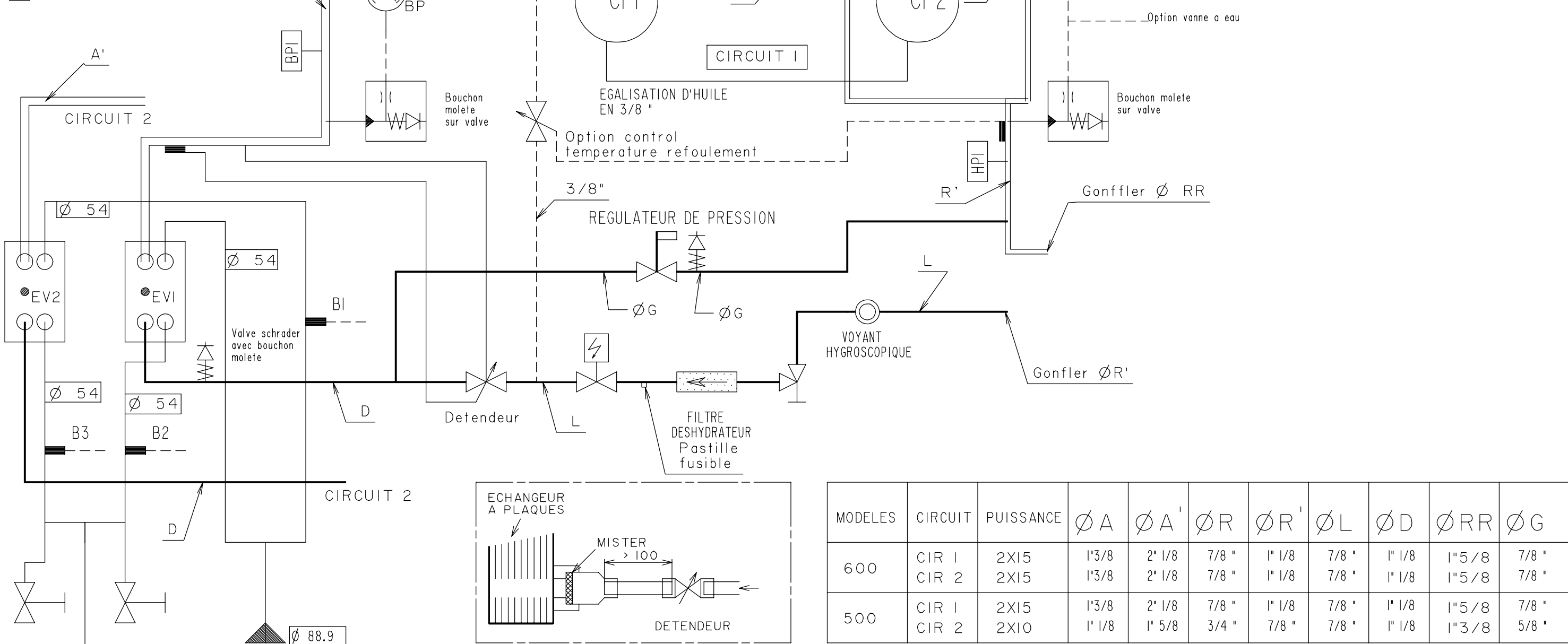


GD	36	08.11.99	Ajout d'une pastille fusible sur chaque circuit
MODIFIE PAR	IND	N.ETUDE	DATE
		APPAREIL OU UNITE	MATIERE:
		LGN 350 A 450	
		DESIGNATION	ECHELLE
		SCHEMA FRIGORIFIQUE	TRAITEMENT
		3 COMPRESSEURS 2 CIRCUITS	MASSE:
		NUMERO DE COMMANDE:	REMPLECE PAR:
		NOTE D'ETUDE:	REMPLECE:
		DATE:	FORMAT
		DATE:	NUMERO DE PLAN
		DATE:02/02/94	INDICE
		DESSIN PAR: JMB	A3 3956115 36

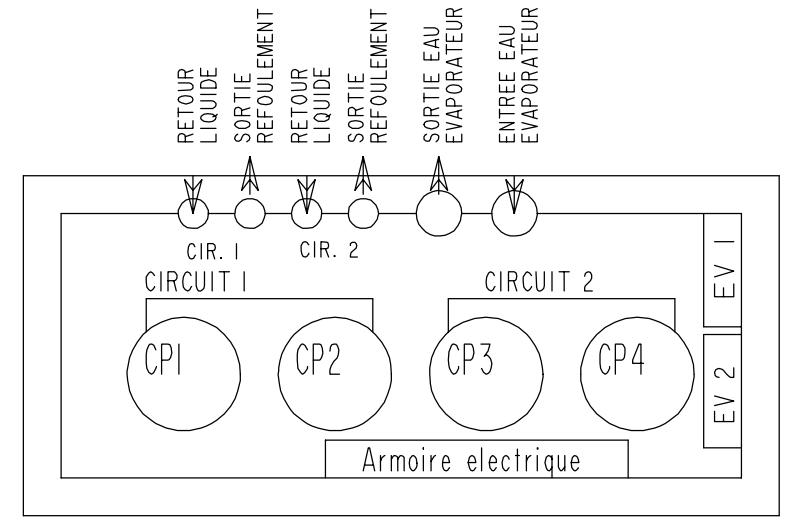
TE SPECIAL LIVRE
AVEC KIT TANDEM

B4
B6
ENROULEES DANS
L'ARMOIRE

2 CIRCUITS FRIGORIFIQUES
IDENTIQUES



MODELES	CIRCUIT	EVAPORATEUR
600	CIRCUIT 1	14-50
	CIRCUIT 2	14-50
500	CIRCUIT 1	14-50
	CIRCUIT 2	14-30



MODELES	CIRCUIT	PUISSANCE	Ø A	Ø A'	Ø R	Ø R'	Ø L	Ø D	Ø RR	Ø G
600	CIR 1	2X15	1"3/8	2" 1/8	7/8 "	1" 1/8	7/8 "	1" 1/8	1"5/8	7/8 "
	CIR 2	2X15	1"3/8	2" 1/8	7/8 "	1" 1/8	7/8 "	1" 1/8	1"5/8	7/8 "
500	CIR 1	2X15	1"3/8	2" 1/8	7/8 "	1" 1/8	7/8 "	1" 1/8	1"5/8	7/8 "
	CIR 2	2X10	1" 1/8	1" 5/8	3/4 "	7/8 "	7/8 "	1" 1/8	1"3/8	5/8 "

GD	36	08.11.99	Ajout d'une pastille fusible sur chaque circuit
MODIFIE PAR	IND	N.ETUDE	DATE
APPAREIL OU UNITE		MATERIE:	
LGN 500 A 600			
DESIGNATION		ECHELLE	
SCHEMA FRIGORIFIQUE		TRAITEMENT	
4 COMPRESSEURS - 2 CIRCUITS		MASSE:	
NUMERO DE COMMANDE:		REMPLECE PAR:	
NOTE D'ETUDE:		REMPLECE:	
VERIFIE PAR:		FORMAT	
DESSIN PAR:		NUMERO DE PLAN	
JMB		INDICE	
DATE:02/03/94		A3	
		3956116	
		36	

