

## ERSATZTEIL-INFORMATION

N° VC 261



Spare part information  
 Information de pièces détachées  
 Informazione pezzi di ricambio  
 Onderdelen – informatie  
 Información sobre repuestos

1 of 2

Country	<b>A</b>	<b>B</b>	020	<b>CH</b>	<b>CZ</b>	020	<b>D</b>	<b>DK</b>	019		
Code:	<b>E</b>	021	<b>F</b>	023	<b>GB</b>	021	<b>H</b>	020	<b>I</b>	022	<b>L</b>
	<b>NL</b>		<b>P</b>	019	<b>PL</b>	019	<b>TR</b>	019			

Spare part information can also be found in the Vaillant Intranet  
<http://uxpdm1.rem.vaillant.hp-net.de/orgeinheit/dl/et/etinfo/etinfo.html>

Division	Ref.	Name	Phone/Telefax	Date
MSP-T	ep	Paul Epping	+49-2191-182024 / +49-2191-187-2024	21.10.03

Title

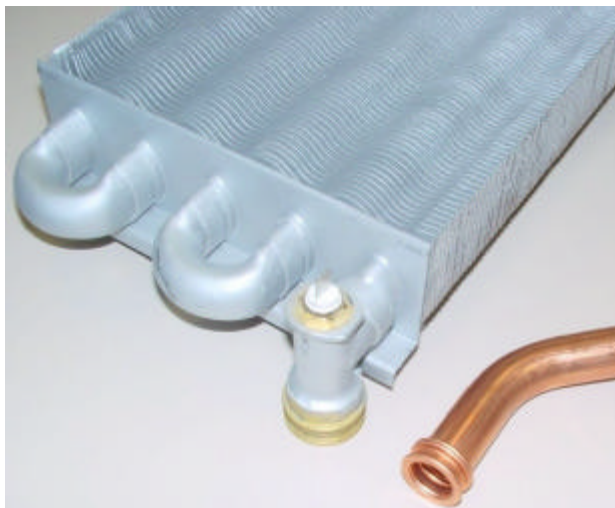
## New primary heat exchanger for Euro Pro/Plus + APC

Reference documents/Reason/Key words

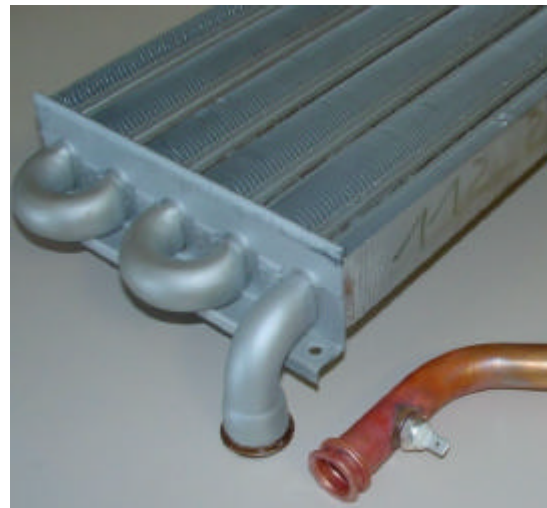
AE1005355

Description

In the series production of the Euro Pro/Plus and APC boilers, new primary heat exchangers have been introduced (open fin).



**Fig.1:** old primary heat exchanger (closed fin)



**Fig.2:** new primary heat exchanger (closed fin)

Thus, the following modifications occurred:

### 1. Euro Pro/Plus Boilers

New primary heat exchanger:

- for Euro Pro/Plus Turbo 12 to 20kW
- for Euro Pro/Plus Turbo 28 kW

The heat exchangers no longer have a device for the NTC (temperature sensor) at the return side. For this reason, the NTC has been integrated in the connection pipe. Furthermore, the geometry of the connection pipes for flow and return had to be modified.

**New pipes:**

- connection pipe pump - primary heat exchanger 28kW Turbo (with soldering nipple and NTC)
- for 12-20kW boilers we will use the same pipes as already used for 24kW boilers.

**Consequences for spare parts:**

(The article number of the spare parts can be taken from the table below.)

As spare parts, only the (coated) Plus heat exchangers will be used – this applies as well to Pro boilers. The heat exchangers will only be delivered completely with both connection pipes – as already done with 24kW boilers– in order to ensure that the spare parts are compatible for use even with old appliance generations. Thus, these spare parts are also valid for the old appliance generation and will replace the former spare parts used up to now.

One exception is the heat exchanger for 12-20kW boilers. With these output models the heat exchangers for open-flued and Turbo boilers are the same, however only the Turbo boilers will be equipped with new heat exchangers; thus, the old heat exchanger will still be available for the open-flued boilers. As the new spare part for the Turbo boilers is more expensive (due to the additional pipes), the catalogues for the appliance generation before version ...R1 will list the old heat exchanger. However, on request, the new spare part would be available as well for Turbo boilers before ...R1.

** Note:**

For all boilers applies:

In case that a qualified installer wants to mount an old heat exchanger (incl. NTC) in an appliance with a new heat exchanger (without NTC) it is possible to replace the existing pipes by old pipes (see respective spare part catalogue) and thus to use the old heat exchanger without any loss in quality.

**2. APC Boilers**

The 28kW Turbo APC boilers will be equipped with the same primary heat exchanger as the respective Euro boilers. Even the return pipe (pump → primary heat exchanger) with integrated NTC can be taken from the Euro series. It was possible to maintain the flow pipe geometry (PHE → 3-way valve). For production reasons, the mounting position of the NTC has been changed. In order to avoid a resulting collision with the cover of the low pressure chamber, the latter has been equipped with a dent.

**Consequences for spare parts:**

As the flow pipe – with the modified mounting position of the NTC and with the missing dent in the chamber cover – would not fit into the old boilers, the flow pipe will still be manufactured with the old NTC position – but only for the spare part demand. Thus, the respective spare part (023227) remains valid.

As spare part for the primary heat exchanger of the APC appliance the respective Euro spare part will be used. You only have to take into consideration that the flow pipe (primary heat exchanger → 3-way valve) included in the packaging must not be used, but the flow pipe already in the appliance.

## Spare part catalogues

The spare part catalogues will be updated as soon as possible.

Part n°	Designation	Action	Remarks
<b>New spare parts:</b>			
104596	Heat exchanger, cpl 28kW Turbo	(Ersatz für 064723)	Euro, APC
104593	Heat exchanger, cpl 12-20kW Turbo		Euro
104597	Connection pipe, cpl interface PHE/NTC		Euro, APC
104602	Connection pipe, cpl PHE-3-way valve		Euro
<b>Replaced spare parts:</b>			
064723	Heat exchanger, cpl 28kW Turbo	(replaced by 104596) Consume for old boilers	Euro, APC

### Actions

N°	Actions	Responsible	Date
1			
2			
Valid as of		Valid until	

### Annex