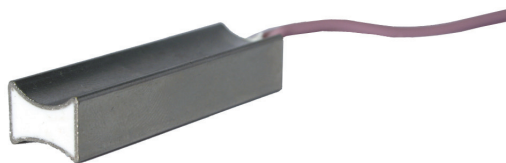


# TG-A1/NTC10-01

## Clamp-on sensor with cable



Temperature sensor with NTC10 element for surface temperature measurement.

- **Adjustable to pipe diameter**
- **Rapid temperature transfer between pipe and sensor**
- **Mounting strap included**
- **Simple and quick installation**

Clamp-on sensor with cable for mounting on pipe.

The sensor is compatible with Aquatrol, Johnson Controls, Satchwell, Trend, Cylon and Honeywell.

### Technical data

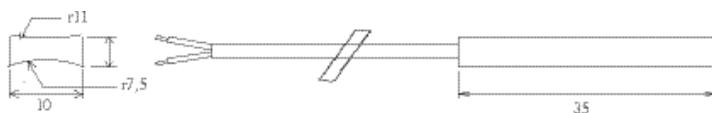
Temperature range	-30...+150°C
Compatible with	Aquatrol, Johnson Controls, Satchwell, Trend, Cylon, Honeywell
Sensor element	NTC 10k3A1, 10 kΩ/25°C
Time constant	13 s
Cable length	1.5 m
Protection class	IP65

### Material

Sensor	Nickel-plated copper tube
Cable	Silicone

Temperature (°C)	Resistance (Ω)	Temperature (°C)	Resistance (Ω)
35	6530	150	
30	8056	140	
25	10000	130	
20	12493	120	388
15	15714	110	510
10	19903	100	678
5	25395	90	916
0	32651	80	1256
-5	42317	70	1752
-10	55304	65	2082
-15	72911	60	2467
-20	97006	55	2985
-25	130306	50	3601
-30	176803	45	4367
		40	5325

### Dimensions (mm)



Surface sensor is used to detect freezing in water heating pipes and have to be configured as a frost protection sensor:

Go to **Input** menu. Select **ANALOG** tab. Select the analog input to which the frost protection sensor is connected. Example if it is connected to AI6 on the connection board, then select **ANALOG INPUT 6** and select **Frost Protection Temperature Sensor (FPT)** from the input type list.