

PUMP

 **The Manual for Operating and Maintenance**

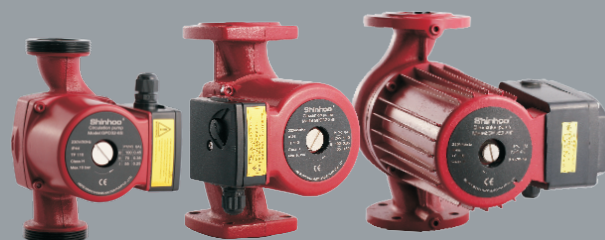
GPD series Single-phase pipeline screened electric pump

Shinhoo[®]
CANNED MOTOR PUMP
HEFEI XINHU CANNED MOTOR PUMP CO., LTD.

Add: No. 1 YangLin Road, Hi-tech Development Zone, Hefei, Anhui,
P.R.China
P c: 230088
Tel: +81-551-62379803
Fax: +81-551-62379801
Http: www.shinhuopump.com

Our company have the finally right for the instruction of explanation and amendment

 Adopt ecotypic paper to print



GPD *series*

Single-phase pipeline screened electric pump



*The Manual for Operating
and Maintenance*

Content

1. Conditions of operation-----	4
2. Points for installation-----	6
3. Maintenance and repair-----	9
4. Customer feedback-----	11
5. Guarantee card-----	12
6. Encasement bill-----	14
7. Certificate of quality-----	15

The GPD-S type The GPD type

GPD *series*

Single-phase pipeline screened electric pump

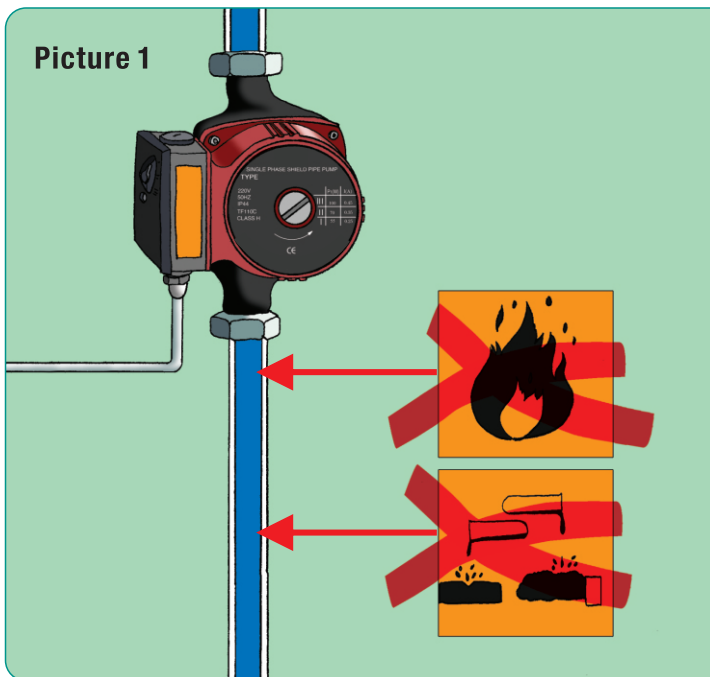


The Manual for Operating and Maintenance

1. Conditions of operation

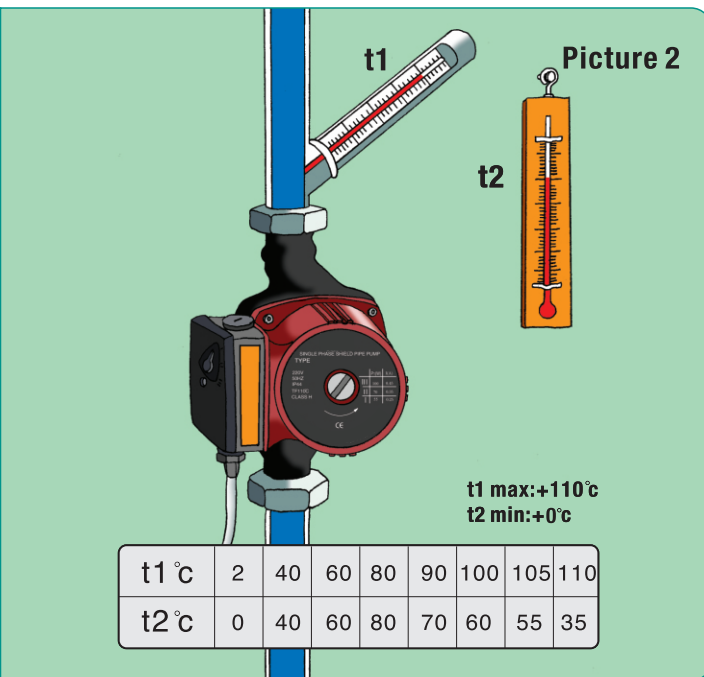
- Bearing of pump is lubricated with water, running without water can't exceed 10 seconds. Shown as Picture 1.
- The temperature of environment must be lower than that of media. Shown as Picture 2

Picture 1



4

Picture 2



t1 max: +110°C
t2 min: +0°C

t1 °C	2	40	60	80	90	100	105	110
t2 °C	0	40	60	80	70	60	55	35

5

GPD *series*

Single-phase pipeline screened electric pump



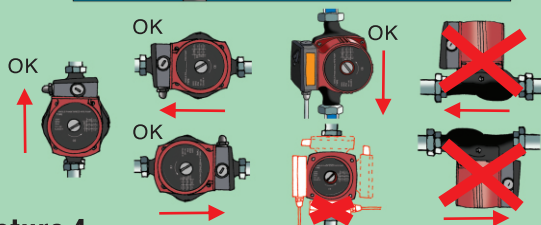
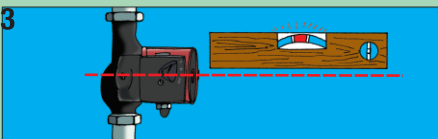
 **The Manual for Operating and Maintenance**

2. Points for installation

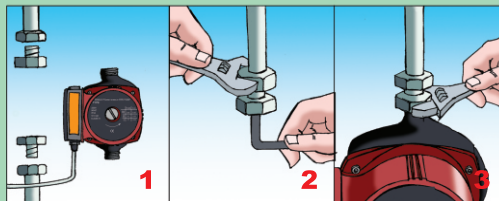
- Pump must be horizontally installed. Shown as Picture 3.
- Pump must be installed according to following procedures shown as Picture 4.

- Beware to use electricity, invite technician to install the pump according to electricity using regulations if necessary. Shown as Picture 5.
- Please read the warnings carefully before installation. Shown as Picture 6.

Picture 3

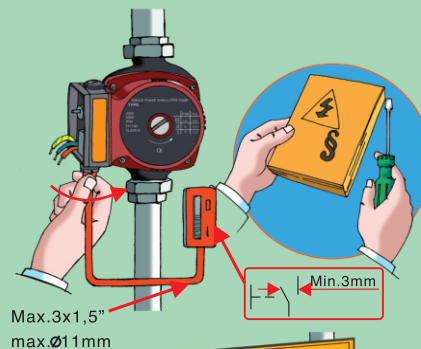


Picture 4

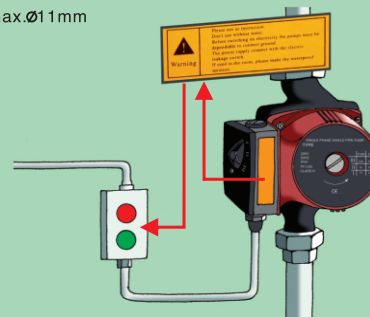


6

Picture 5



Picture 6



7

GPD *series*

Single-phase pipeline screened electric pump



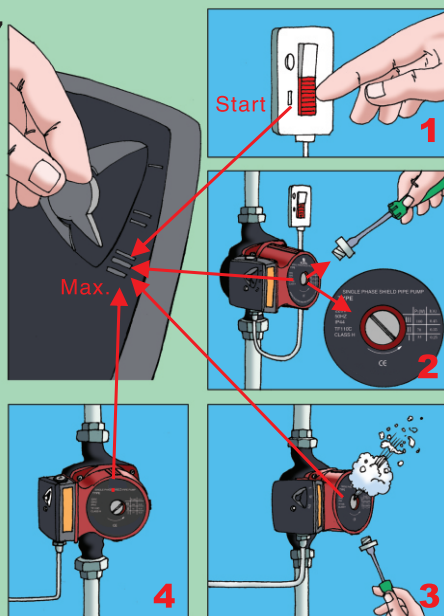
The Manual for Operating and Maintenance

- After installed, pump must be deflated before working for the first time. Shown as Picture 7.

3. Maintenance and repair

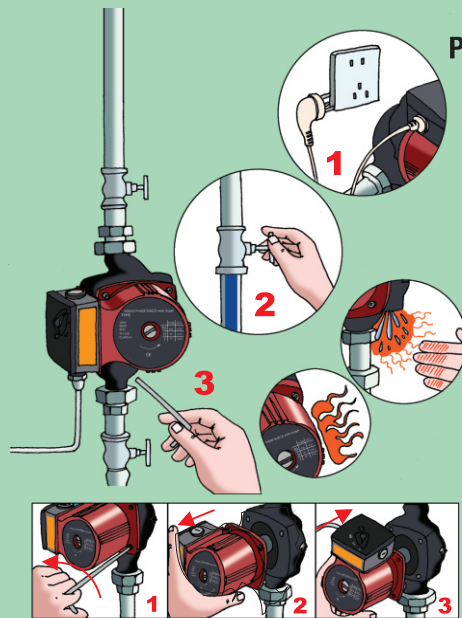
- Attention: If damaged, the power cord must be exchanged by factory or akin technician in order to avoid danger. The maintenance procedures are shown in Picture 8.

Picture 7



8

Picture 8



9

GPD *series*

Single-phase pipeline screened electric pump



The Manual for Operating and Maintenance

● Common troubles diagnostic list.

Common troubles	Causes of troubles	The measures of eliminating troubles
Pump can't be started up	Power supply is not well connected.	Check the fuse or the connection of electricity that possibly loose.
	Electric capacitor is damaged.	Exchange a new electric capacitor.
	Bearing blocked the pump's running.	Make it run in a high speed in short time or loosen the rator with a screwdriver at the end of shaft.
	There is impurity in pump.	Disconnect pump to clean.
There is noise in the system.	The pump flow is made too high.	Adapt to a lower speed.
	There is gas in the pump.	Release the gas up.
There is noise in the pump.	There is gas in the pump.	Release the gas up.
	The inlet hydraulic pressure is too low.	Increase hydraulic pressure of inlet or check gas volume in the enlarged slot.

Customer feedback



GUARANTEE CARD

Single-phase Pipeline Shield Electric Pump

Type of the pump		Invoice No.	
The leaving No.		Purchase Date	
Dealer	This card is valid with dealer's stamp		
User Name			
Address			
Zip Code			

Welcome to use our products. We will provide you with high quality services.

User Guarantee Regulations

- If water pump fails, contact the original purchase shop or local dealer with purchase invoice and guarantee card to solve the problem;
- Guarantee period: 1 year;
- Production batch number MD type of water pump to be repaired must be consistent with records on guarantee card and invoice, otherwise, guaranteed repair will not be provided.

The following conditions are not within guaranteed free repair range

- Damages caused by normal wear and man-made or various natural hazards;
- Unauthorized retrofit, dismantlement and repair by user;
- Damages caused by incorrect installation or application.

Repair record

Date	Failure description	Damaged parts	Remarks	Repaired by

GPD *series*

Single-phase pipeline screened electric pump



The Manual for Operating and Maintenance

ENCASEMENT BILL

Case No. _____ Packing Date _____

Name	Quantity	Name	Quantity
<input type="checkbox"/> Shield Pump	1	<input type="checkbox"/> Guarantee Card	1
<input type="checkbox"/> Manual	1	<input type="checkbox"/> Joint	2
<input type="checkbox"/> Certificate of quality	1	<input type="checkbox"/> Seal Ring	2

: Means no such accessory

Checker _____ 004 _____ Type of the Shield Pump _____

CERTIFICATE OF QUALITY

The product Name

Type

Checker

Leaving Date

The product is eligible to agree to leave factory by a test according to Q/DY04 Standard