



The Oventrop Quality Management System is certified to DIN-EN-ISO 9001

## “Floorbox” for the installation of surface heating systems without distributor/collector

“Floorbox” lateral connection

“Floorbox” lower connection

Technical information

### Tender specification:

The “Floorbox” serves to connect each dwelling to surface heating systems with flow temperatures suitable for such systems without distributor and electrical installation. It is used in combination with a “Unibox” installation set for room to room control. Standard heat meters with flat sealing bodies can be installed in the return pipe subsequently.

The “Floorbox” is supplied pre-assembled in a cabinet.

Item no.: 102 26 68  
lateral connection consisting of:

For the supply:

- Ball valve with temperature sensor connection M 10 x 1, venting and flushing valve, pipe elbow and connection fitting

For the return:

- Ball valve with coupling
- Meter stool piece with reducers
- Double regulating and commissioning valve “Hycococon V” with angle pattern fitting, venting and flushing valve and connection fitting.
- 4 additional flat seals for 1” connections

Item no. 102 26 69  
for lower connection consisting of:

For the supply:

- Ball valve with temperature sensor connection M 10 x 1, venting and flushing valve, pipe elbow and connection fitting

For the return:

- Ball valve with coupling
- Meter stool piece with reducers
- Double regulating and commissioning valve “Hycococon V” with angle pattern fitting and venting and flushing valve
- Pipe with connection fitting
- 4 additional flat seals for 1” connections

Max. working temperature  $t_s$ : 100°C

Max. working pressure  $p_s$ : 10 bar

Max. differential pressure: 1 bar

kvs value: 6.6 m<sup>3</sup>/h

(the kvs value of the double regulating and commissioning “Hycococon V” must also be taken into account)

Dimensions: see dimensional drawing

### Application:

The “Floorbox” is used to connect each dwelling to surface heating systems together with the installation sets “Unibox”. A lower or vertical connection to the “Floorbox” is possible. Standard heat meters with flat sealing bodies with a length of 110 mm and male thread G 3/8 or a length of 130 mm and male thread G 1 can subsequently be installed in the return pipe.

### Function:

The “Floorbox” is a central unit for the isolation, control and measurement of heat consumption per dwelling. Hydraulic balancing is carried out with the help of the double regulating and commissioning valve “Hycococon V”. When installing a heat meter, its depth (measure T1) has to be considered and the frame has to be pulled out accordingly. Bleeding of the system is carried out with the help of the venting and flushing valves at the supply and return.

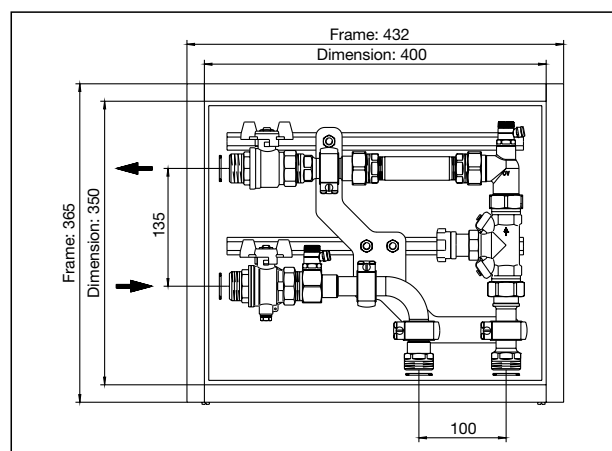
F. W. OVENTROP GmbH & Co. KG  
Paul-Oventrop-Straße 1  
D-59939 Olsberg, Germany  
Telephone +49(0) 29 62 82 - 0  
Telefax +49(0) 29 62 82 - 450  
E-Mail mail@oventrop.de  
Internet www.oventrop.de

For an overview of our global presence visit [www.oventrop.de](http://www.oventrop.de).

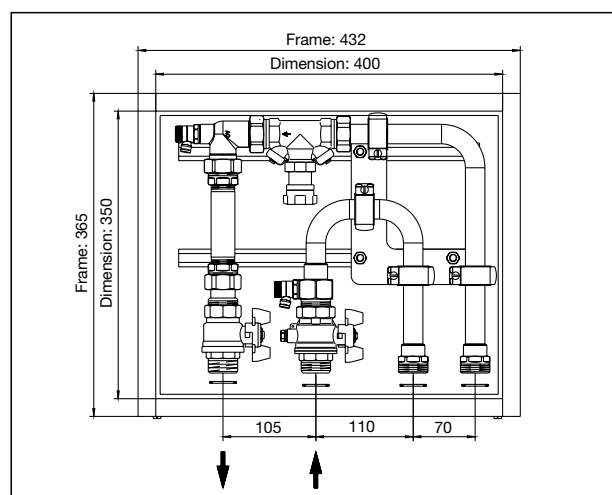
Subject to technical modification without notice.

Product group 13  
ti 199-1/10/MW  
Edition 2009

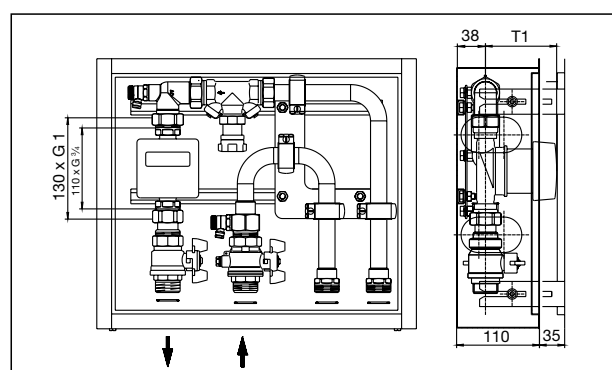
Printed on paper free from chlorine bleaching.



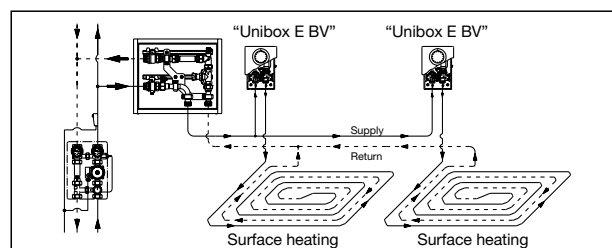
Dimensions “Floorbox”, lateral connection



Dimensions “Floorbox”, lower connection



Installation depth “Floorbox”



Installation example