



The Oventrop Quality Management System is certified to DIN-EN-ISO 9001

### Tender specification:

Oventrop swing type check valve, both ports female thread according to DIN ISO 228.

Bronze body, inner parts made of brass.

PN 16 between  $-10^{\circ}\text{C}$  and  $+80^{\circ}\text{C}$

PN 10 between  $+80^{\circ}\text{C}$  and  $+120^{\circ}\text{C}$

### Function:

The Oventrop swing type check valves are suitable for horizontal and vertical installation in the pipework.

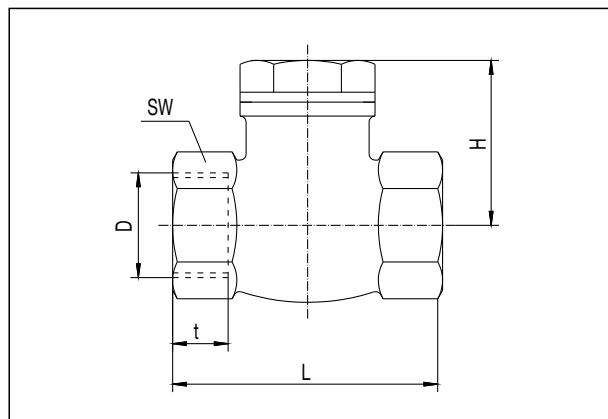
The swing type check valves are not suitable for use on pulsating flow and must be installed with a minimum of 10 D (10 x nominal pipe diameter) of straight pipe behind the pump.

### Application:

Central heating and cooling systems.

Size	Item no.	kvs value
DN 15	107 50 04	5,5
DN 20	107 50 06	10,2
DN 25	107 50 08	20,2
DN 32	107 50 10	34,7
DN 40	107 50 12	44,9
DN 50	107 50 16	104,4
DN 65	107 50 20	175,0

### Dimensions:

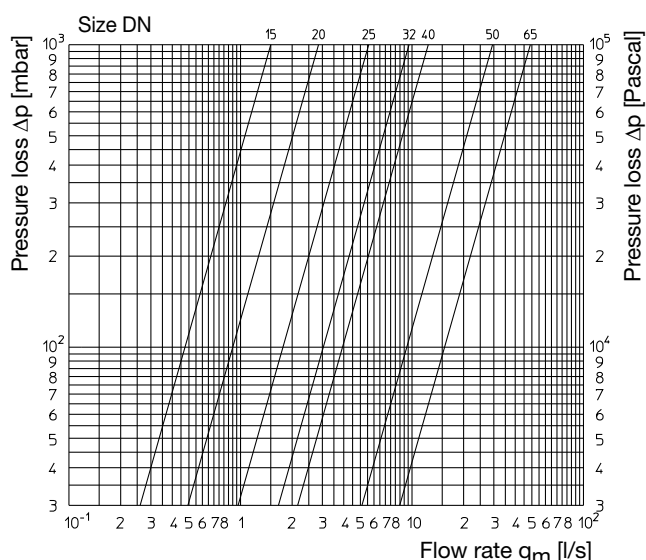


DN	D*	L	H	t	SW**
15	G 1/2	60	40	12	27
20	G 3/4	70	49	13	34
25	G 1	80	56	15	41
32	G 1 1/4	95	60	16	51
40	G 1 1/2	105	70	18	55
50	G 2	130	80	20	70
65	G 2 1/2	160	105	20	90

\*G according to ISO 228

\*\*SW = spanner size

### Flow chart:



Subject to technical modification without notice.

Product range 5  
ti 179-1/10/MW  
Edition 2005

OVENTROP UK LTD.  
Unit E – The Loddon Centre  
Wade Road  
Basingstoke, Hampshire RG24 8FL  
Telephone (01256) 33 04 41  
Telefax (Sales) (01256) 33 05 25  
Telefax (General) (01256) 47 09 70  
E-Mail sales@oventrop.co.uk

OVENTROP GmbH & Co. KG  
Paul-Oventrop-Straße 1  
D-59939 Olsberg  
Telephone (02962) 82-0  
Telefax (02962) 82-450  
Internet www.oventrop.de  
E-Mail mail@oventrop.de