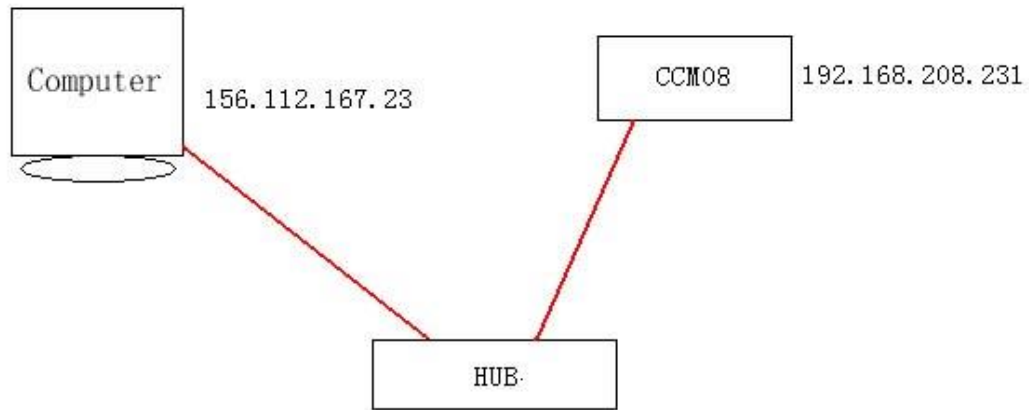


## CCM08 Setup Guide

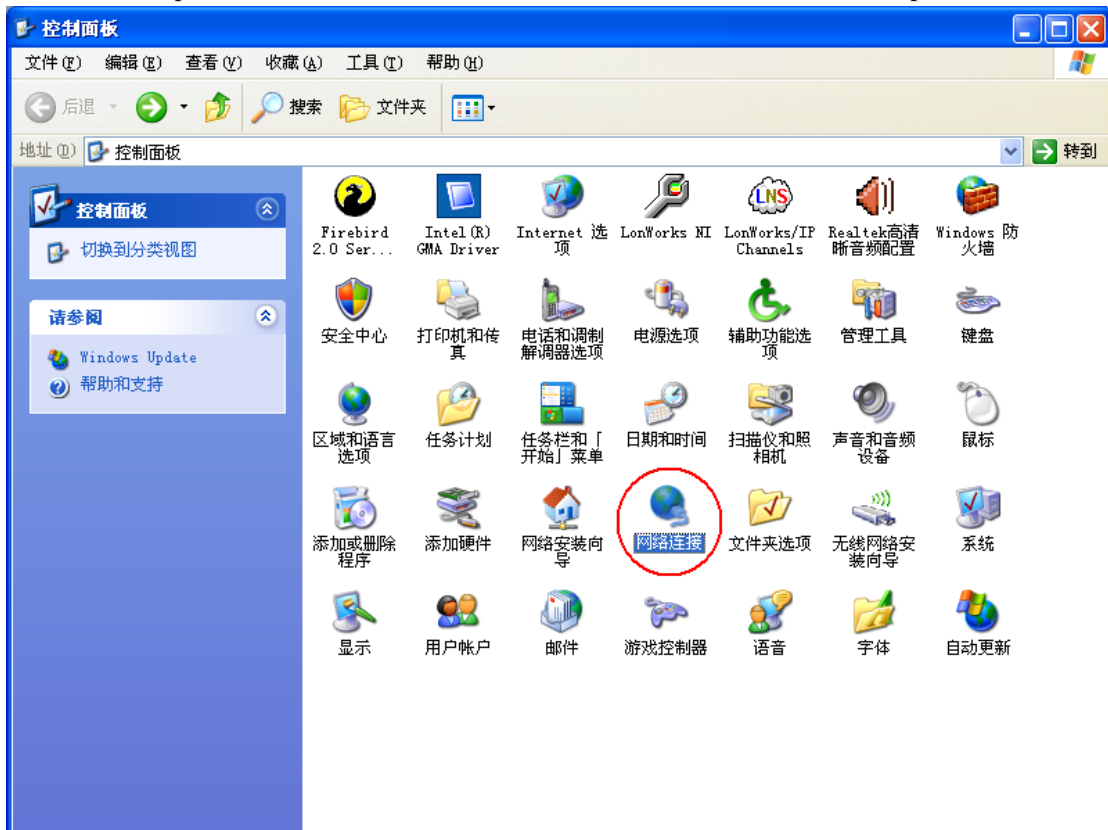
Each CCM08 has a individual default IP address. You can get this IP address from the label stucked on the CCM08 or from the manual. You should modify this IP address to match the network address. CCM08 and the computer should work at the same subnet.

For example, the IP of CCM08 is 192.168.208.231, and the IP of computer is 156.112.167.23. They are connected to the HUB.



First step, change the IP of computer to make the computer and the CCM08 work at the same IP subnet. Follow below steps:

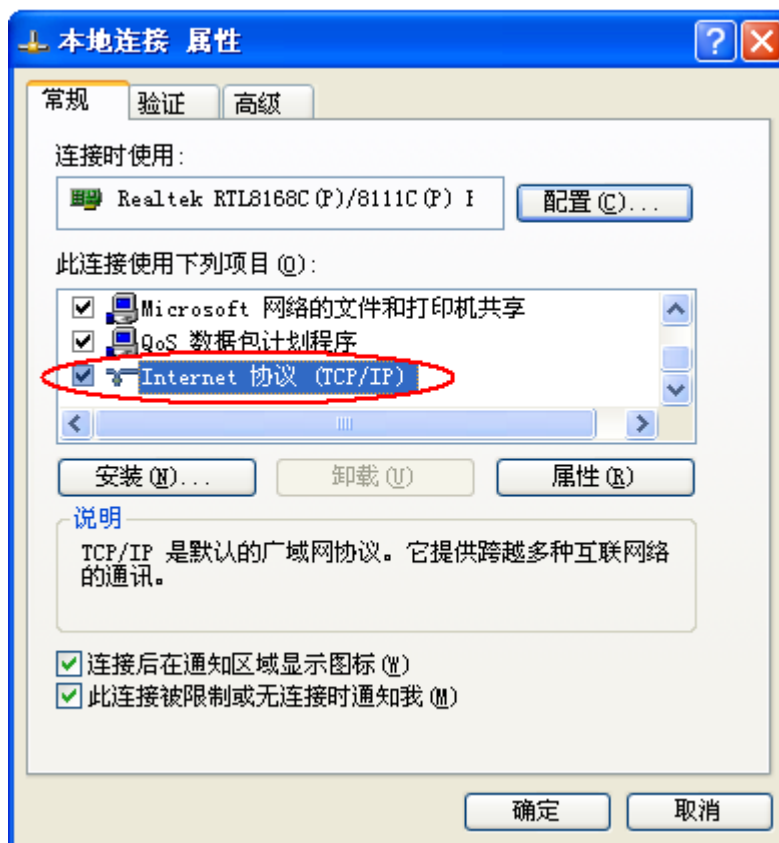
1. Start > control panel > Network, double click on the icon and enter the Network panel



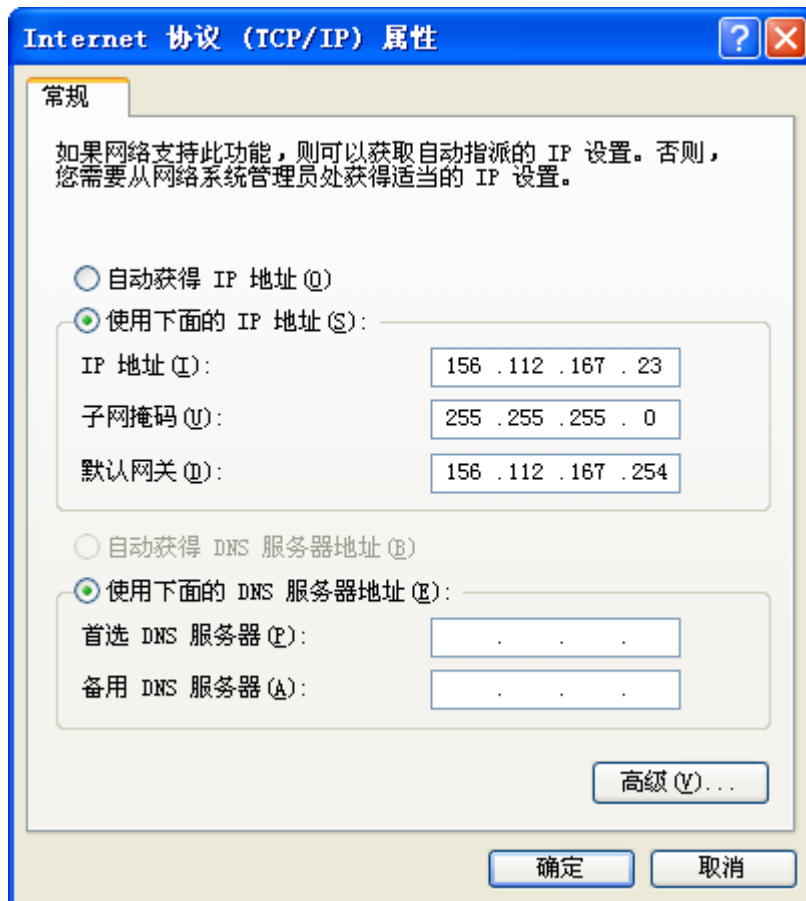
2. Right click on the icon of Local network, choose 'Properties'



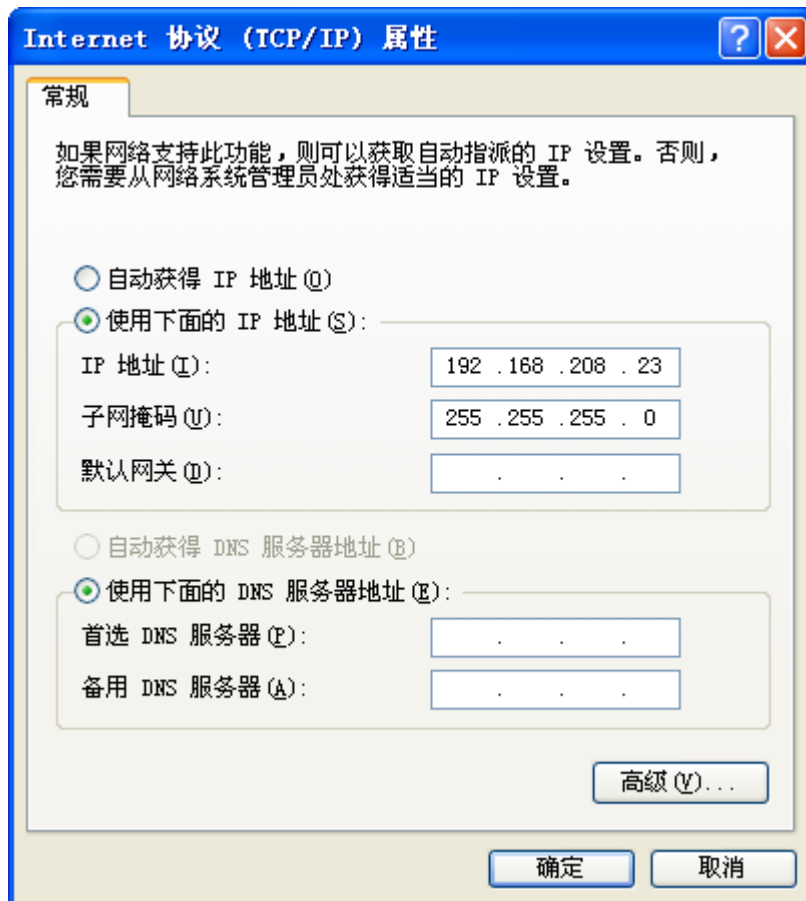
3. Choose 'Internet Protocol (TCP/IP)', click 'Properties'.



4. Now we can see Internet Protocol properties as below

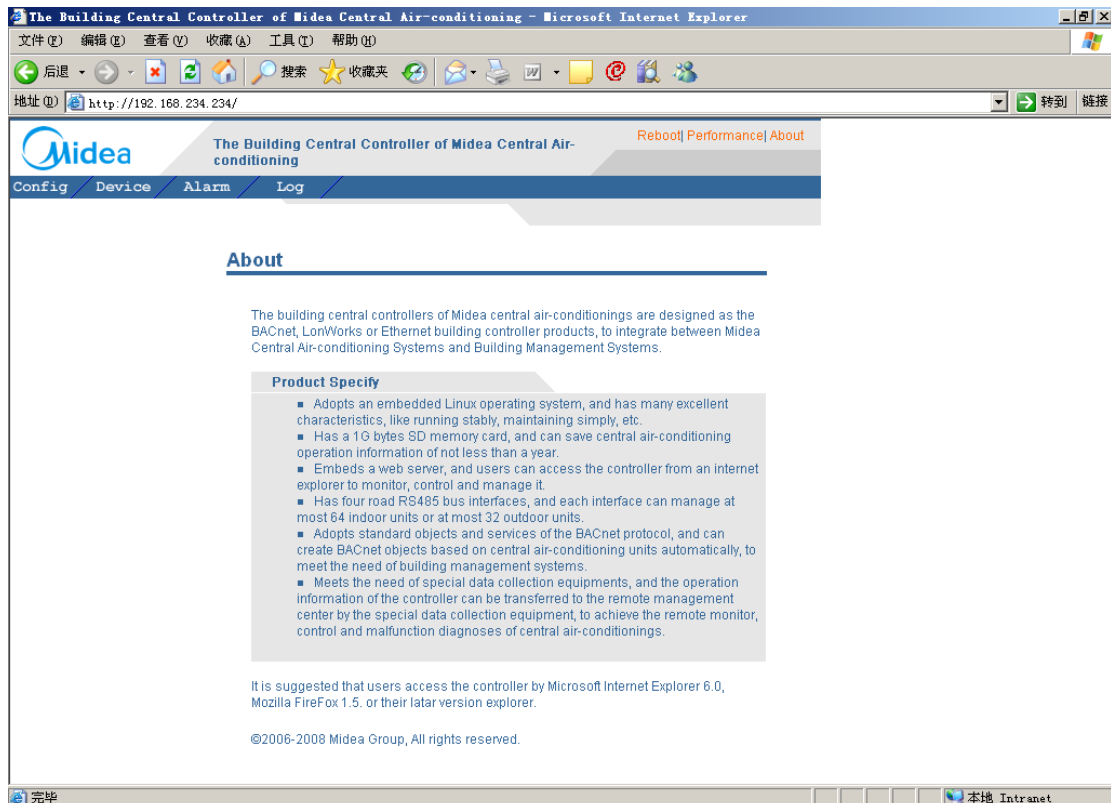


Modify the IP address and subnet mask.



Click OK to save the modify.

5. Open browser and enter the IP address of CCM08(in this example, it is 192.168.208.231), enter the page of CCM08. (User name: Admin Password:12345)



- Now you can modify the IP address, subnet mask and default gateway of CCM08 what you need.

**Network interface**

**eth0**  DHCP  
 Static IP

IP

Subnet mask

Default gateway

**eth1**  DHCP  
 Static IP

IP

Subnet mask

Default gateway

**Apply**

You just need to modify eth0 and Apply. Please don't change eth1.

- Then modify the IP address, subnet mask and default gateway of computer again to make computer and CCM08 work at a same subnet.