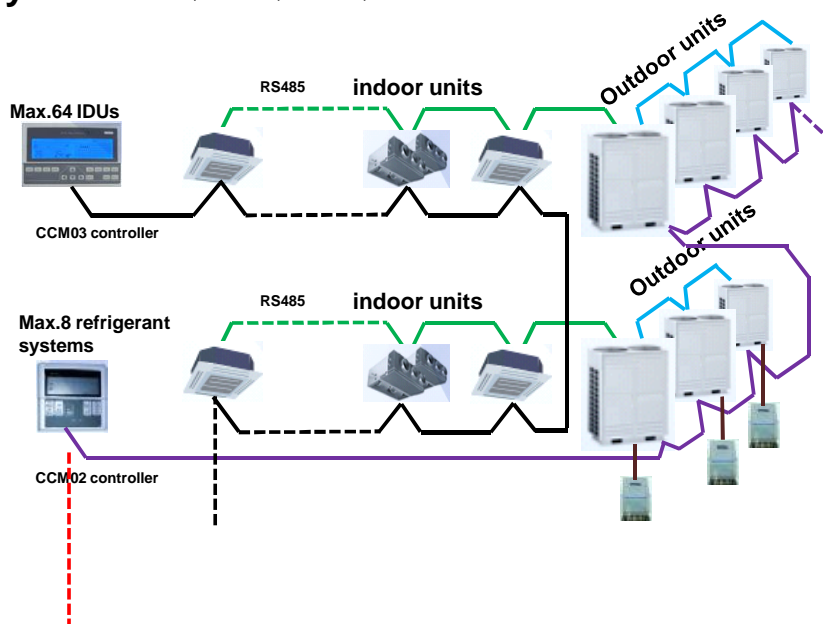




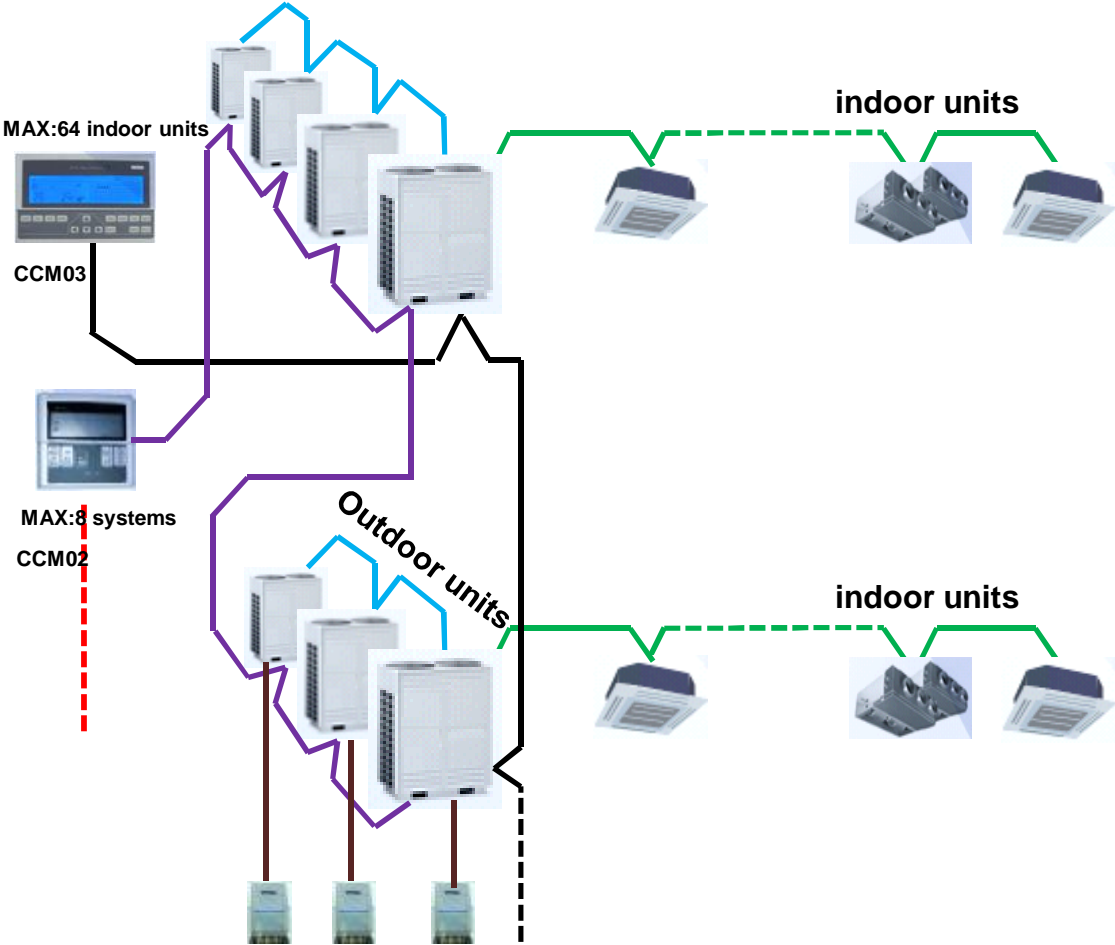
# 1 BACnet Gateway---CCM08

Step1: Wiring with Central controller and indoor/outdoor units

Refrigerant System: V3、V4、D3、D4



# Refrigerant System: Full V4+



## Step2: Wiring with gateway and central controllers

Useful port, Connect to PC

Port reserved,  
No useful



4\*Port RS485,  
each port  
connect one  
CCM(indoor or  
outdoor) and  
corresponding  
indoor or  
outdoor units

Each gateway has a initial IP address, this one is:192.168.208.231,Pls keep it



**Power  
Switch**

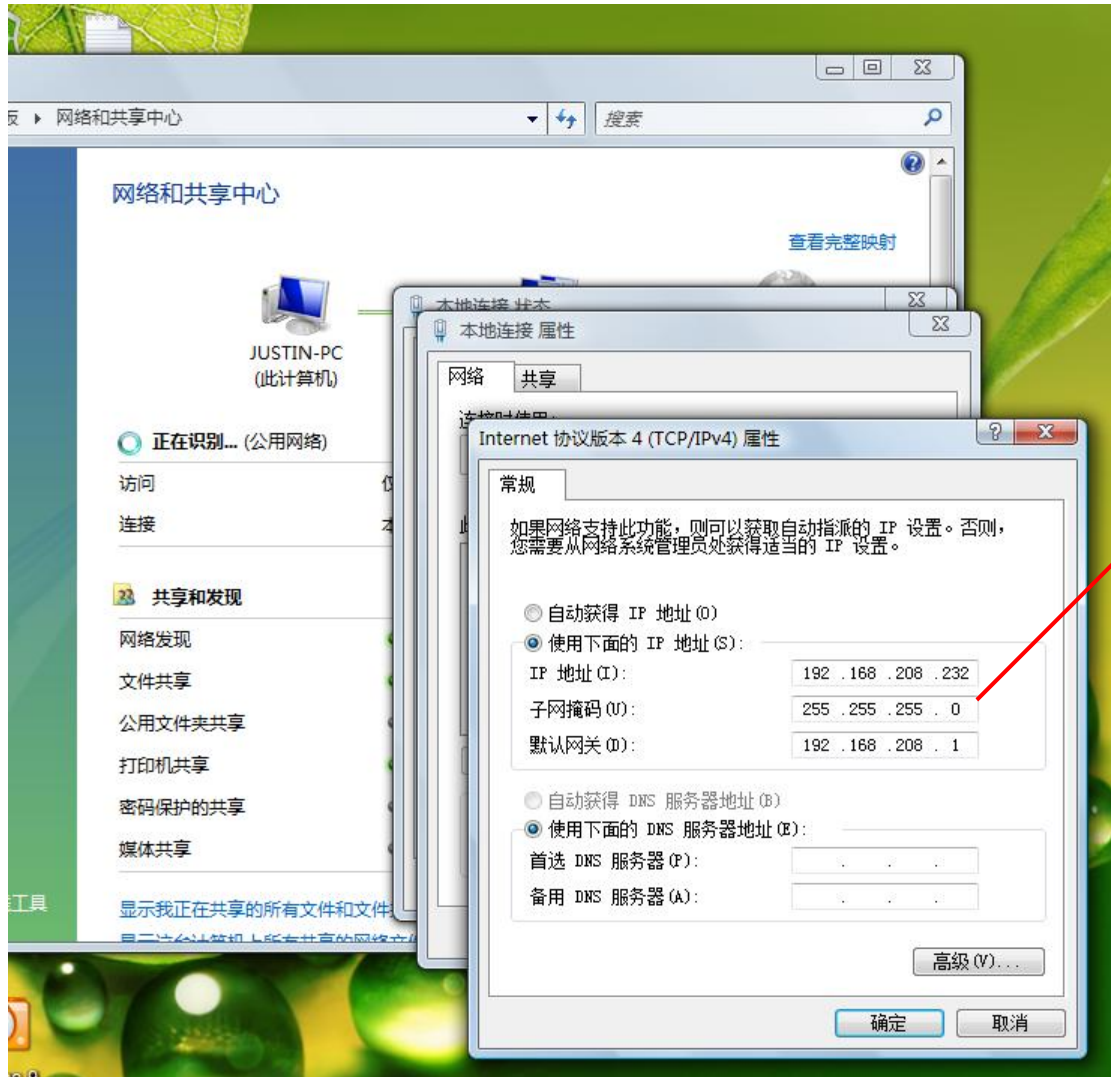
**Power  
Socket**

**Take a PC, Connect to gateway**



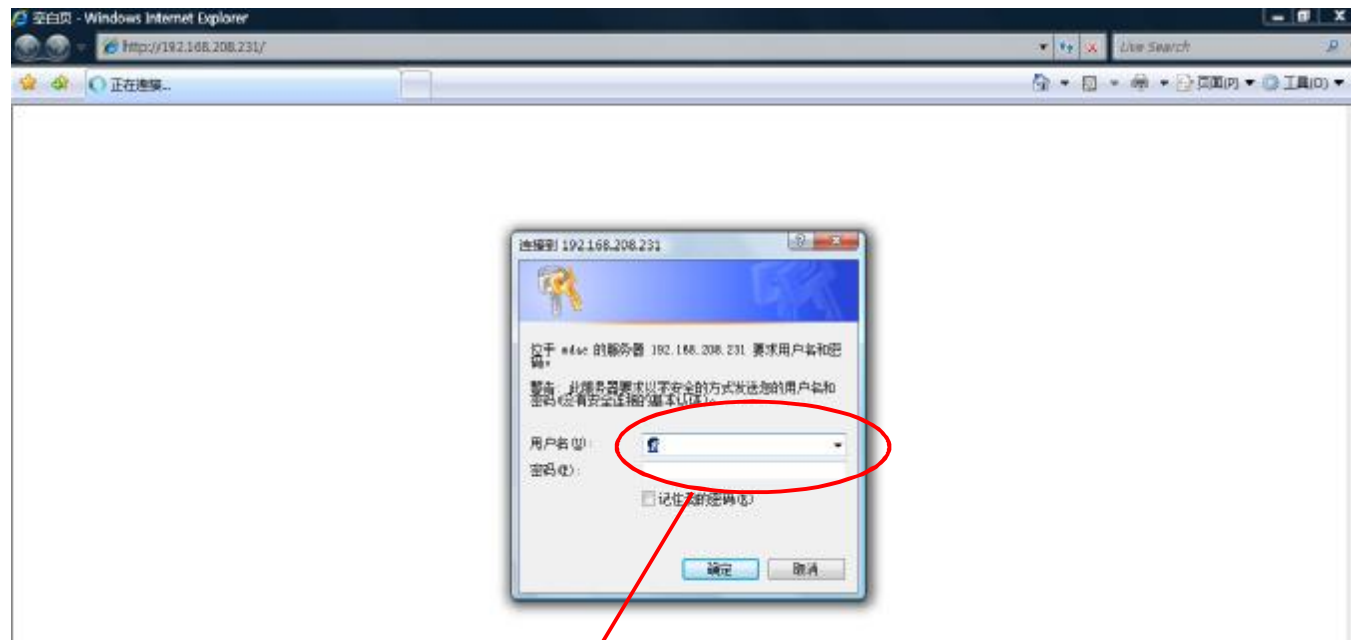
**Ex. In this case, CCM08 connect one CCM03 and 8 IDUs**

### Step3: Modify IP address of PC to connect gateway



**Modify the PC ip address to:192.168.208.232, under the same address range with CCM08.**

**Turn on IE, input 192.168.208.231 in the address bar**



**Initial user name: admin**

**Initial PW: 12345**

After that, the web control interface appeared



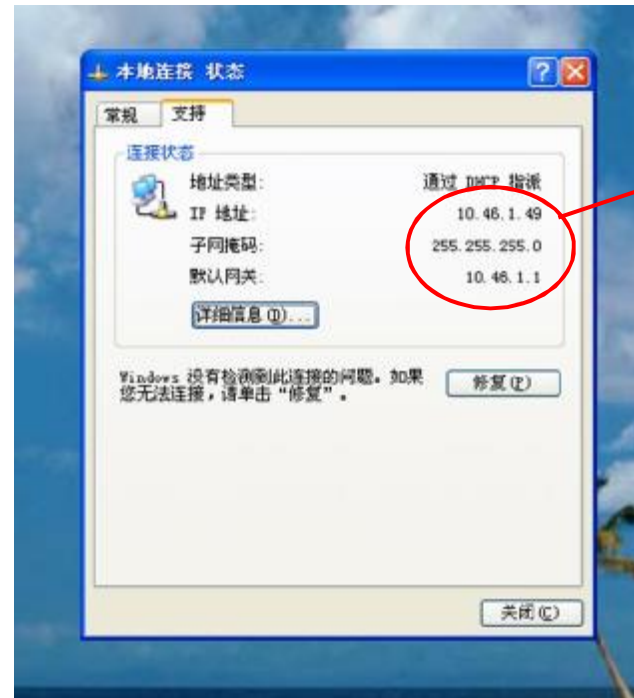
In the web control interface, we can control and monitor the A/C





## Step4: Connect the gateway to LAN

Firstly, Check the IP address of existed LAN



IP address of this PC is:  
10.46.1.49, pls keep it

## Next, Change the ip address of CCM08

Cannot choose this item !!!

No useful, Don't care about it

Change the ip address under the same address range. Pls ask the IT administrator which ip address is available. In this case, ip address of CCM08 have been changed to 10.46.1.2

After modified, Click "Rebot" button

The screenshot shows the Midea AC controller's web management interface in Internet Explorer. The browser address bar shows the URL `http://192.168.208.231/`. The page title is "美的中央空调楼宇控制器". The navigation menu includes "系统设置", "设备监测", "报警记录", and "日志记录". The main content area is titled "网络配置" (Network Configuration). A red circle highlights the "重新引导" (Reboot) button in the top right corner. A modal dialog box is displayed in the foreground, asking "您确定需要重新引导控制器吗?" (Are you sure you need to reboot the controller?). The dialog has "确定" (OK) and "取消" (Cancel) buttons. The background configuration form shows settings for two network interfaces, e#0 and e#1, both set to use static IP addresses.

美的中央空调楼宇控制器 - Windows Internet Explorer  
`http://192.168.208.231/`

美的中央空调楼宇控制器

重新引导 关于

系统设置 设备监测 报警记录 日志记录

控制系统配置

网络配置

控制器  
时间日期  
安全  
网络  
故障诊断  
系统升级  
BACnet

如果网络支持自动获取IP地址，您可以使用自动获取IP地址，否则您需要咨询网络管理员设置静态IP地址。网络配置修改成功后，需要重启控制器，所作的修改才能生效。网络地址修改生效后，当前的网页内容不可用，请输入新的与当前IP地址关联的URL地址，以访问本控制器。控制器有两个网络接口，分别对应e#0和e#1。

网络接口配置

网络接口e#0  自动获取IP地址  
 使用下面的IP地址

IP地址 10.46.1.2

子网掩码 255.255.255.0

默认网关 10.46.1.1

网络接口e#1  自动获取IP地址  
 使用下面的IP地址

IP地址 192.168.1.2

子网掩码 255.255.255.0

默认网关 192.168.1.1

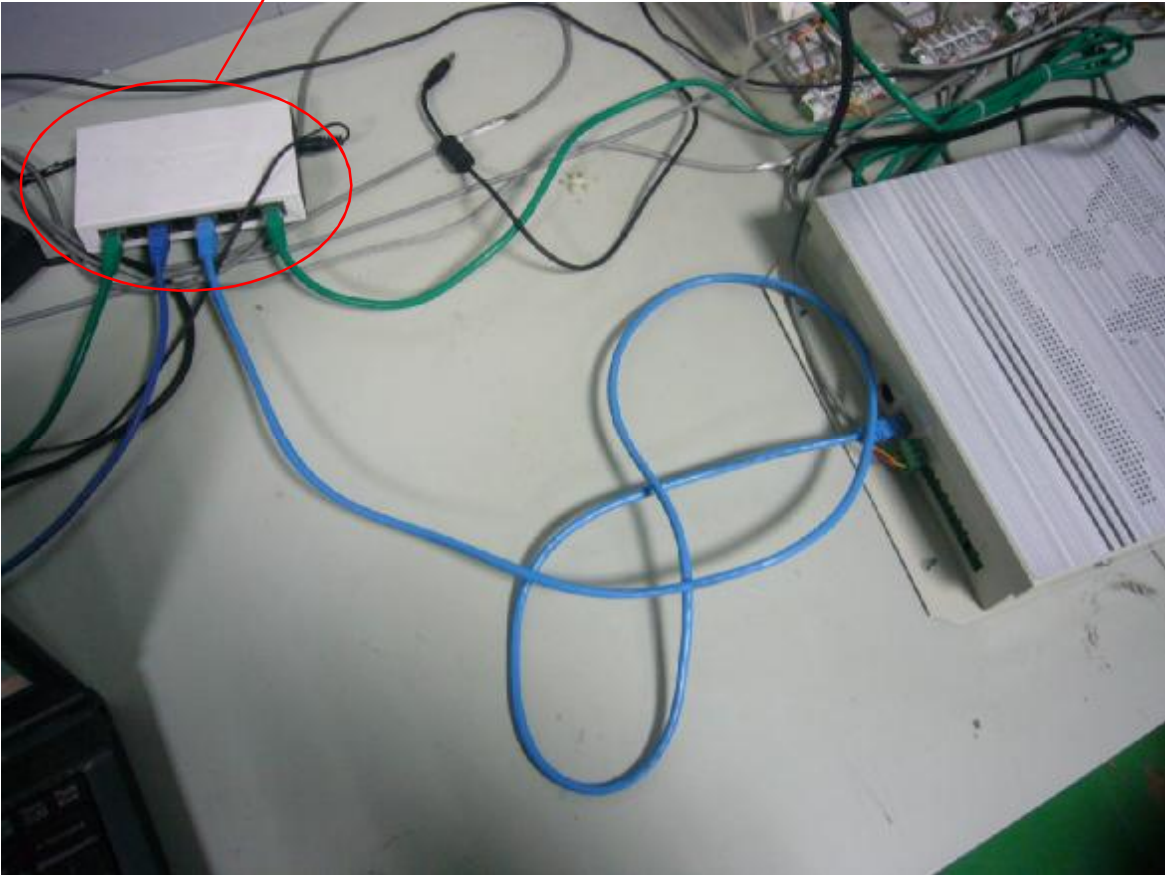
应用

Windows Internet Explorer

您确定需要重新引导控制器吗?

确定 取消

**Connect CCM08 to LAN by Hub**



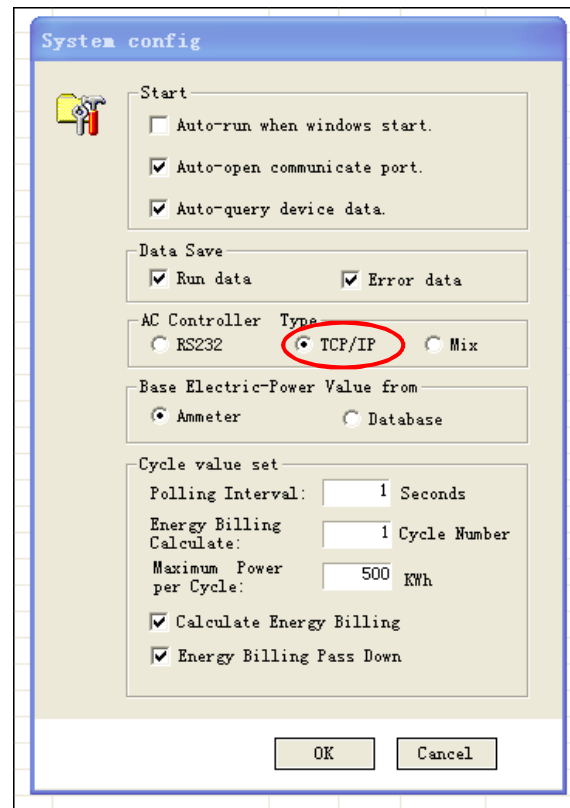
On any PC of LAN, input 10.46.1.2 on IE address bar, get into the web control interface, So CCM08 has been connected to LAN.

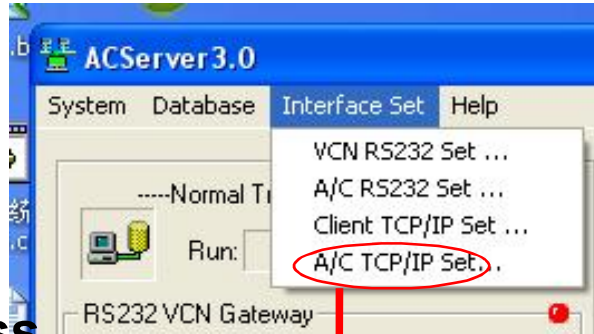


## Additional: CCM08 cooperate with 3<sup>rd</sup> network software

Ex. In this case, IP address of PC is 10.46.1.253, ip address of CCM08 is 10.46.1.251. There are 10 IDUs(Network address range: (0054~0063), 1 ODU(Network address: 1800)

### Turn on ACServer





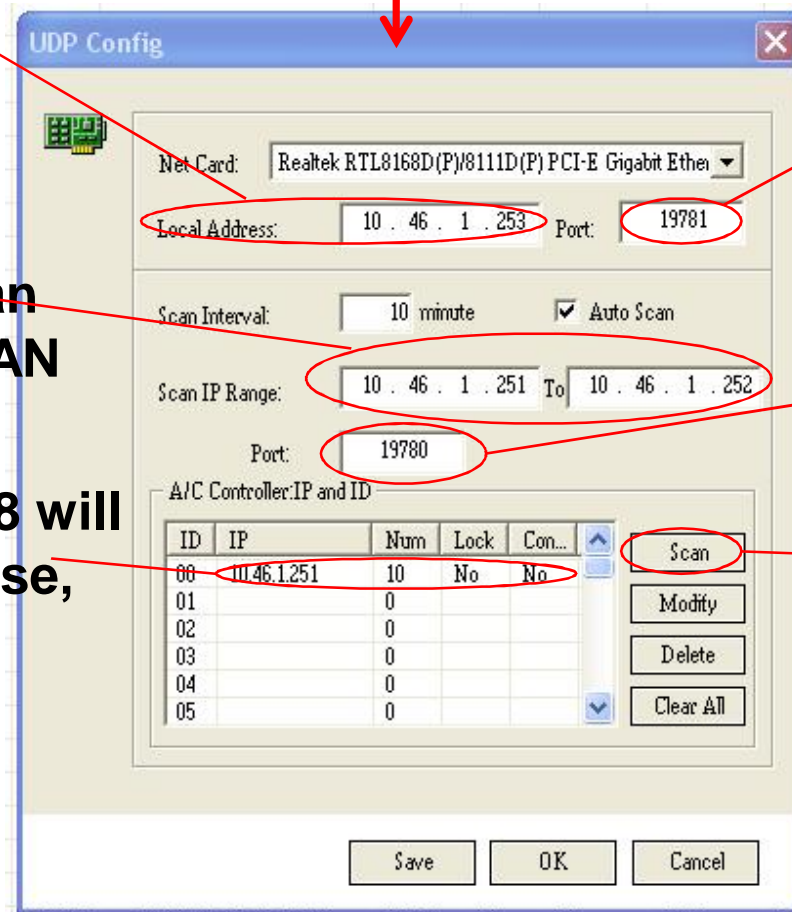
1.This is PC ip address

2.In any case, here have to be 19781

3.This is CCM08 ip address range. Max.256 CCM08 can be connected to LAN

4.In any case, here have to be 19780

6.All existed CCM08 will be found. In this case, only one.



5.Finish all setting above, Click Scan

After configuration, Searching the devices



After search, back to software main interface

