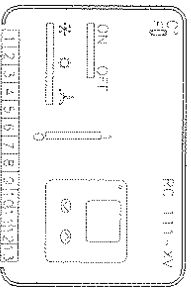
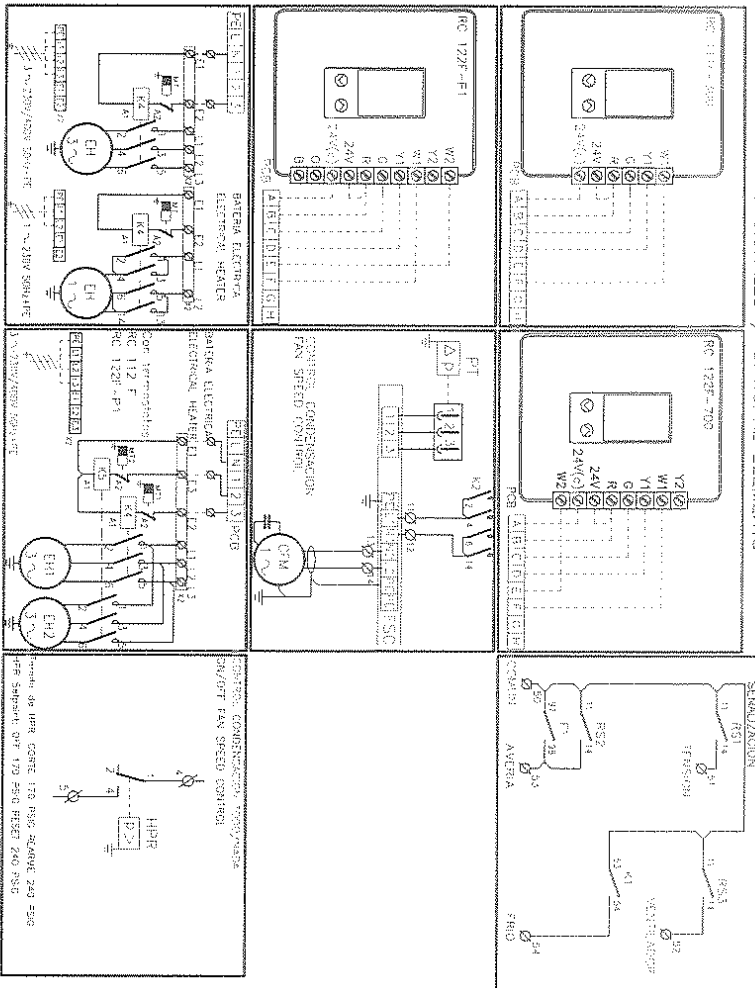
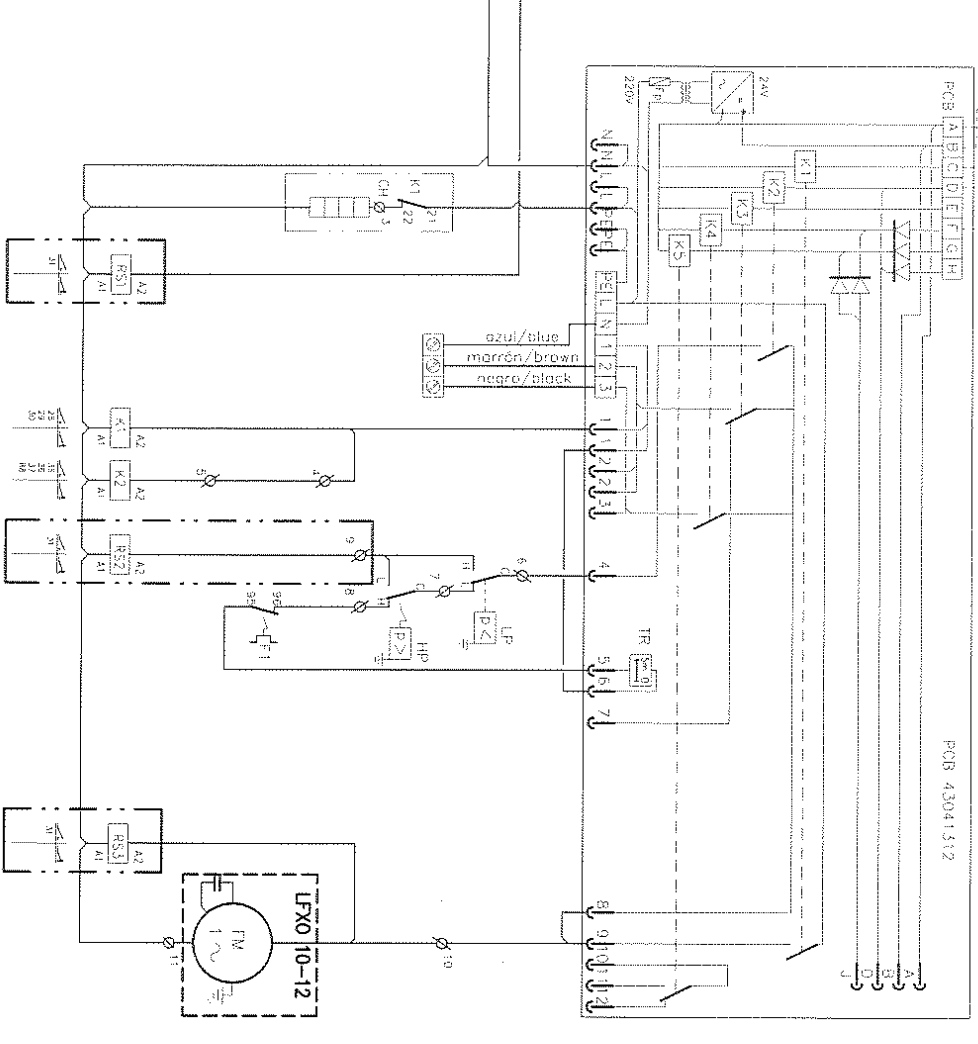
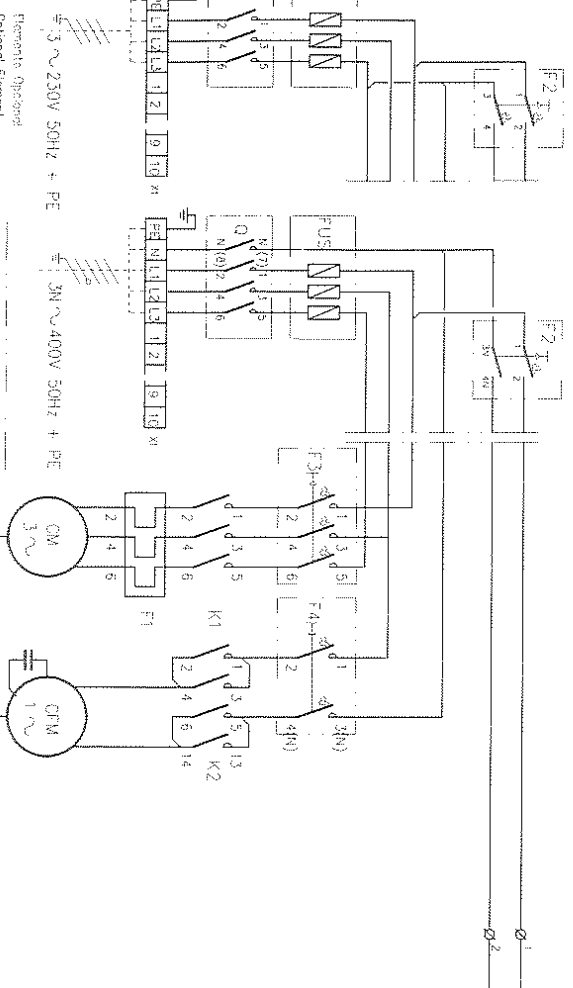


ELEMENTOS OPCIONALES / OPTIONAL ELEMENTS



- CM Motor Ventilador Exterior
- CH Operador de Chasis
- CM Motor del Compresor
- CH Base y refrigeración
- F Evaporador Exterior
- FM Motor Ventilador Interior
- TSO Control condensación
- HP Presostato de Alta Presión
- K Controlador
- M1 Termostato de Seguridad
- PCB Placa Circuito Impreso
- PI Interruptor de presión
- BC Control Remoto
- TR Temporizador de Retardo
- Q Temporizador general
- FUS Fuses
- Controlador Fan Motor
- Control Case Interio
- Compresor Motor
- Evaporador Interio
- Evaporador Exterior
- Motor Ventilador Interio
- Motor Ventilador Interio
- High Pressure Protection
- Controlador
- Security Thermostat
- Printed Circuit Board
- Pressure Transducer
- Remote Control
- Timer Delay
- Unit Switch
- Fuses

POB 43041312



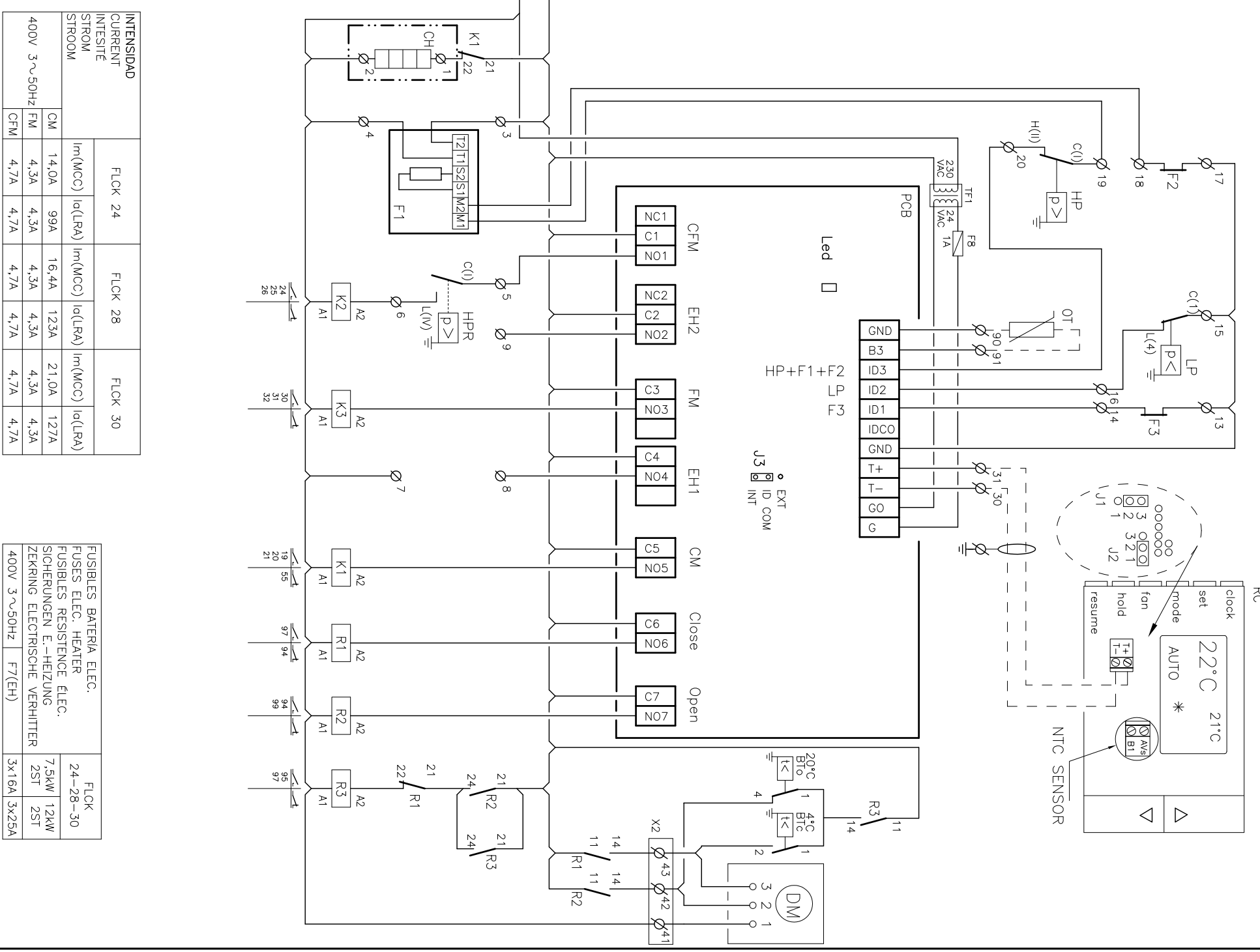
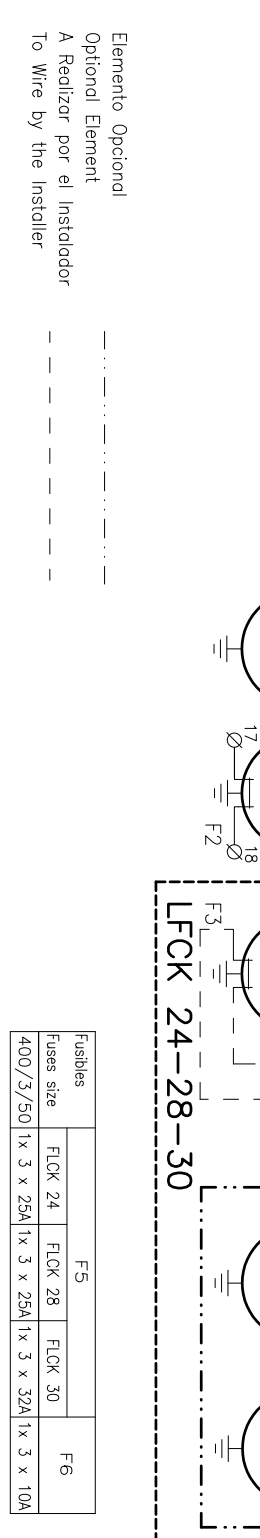
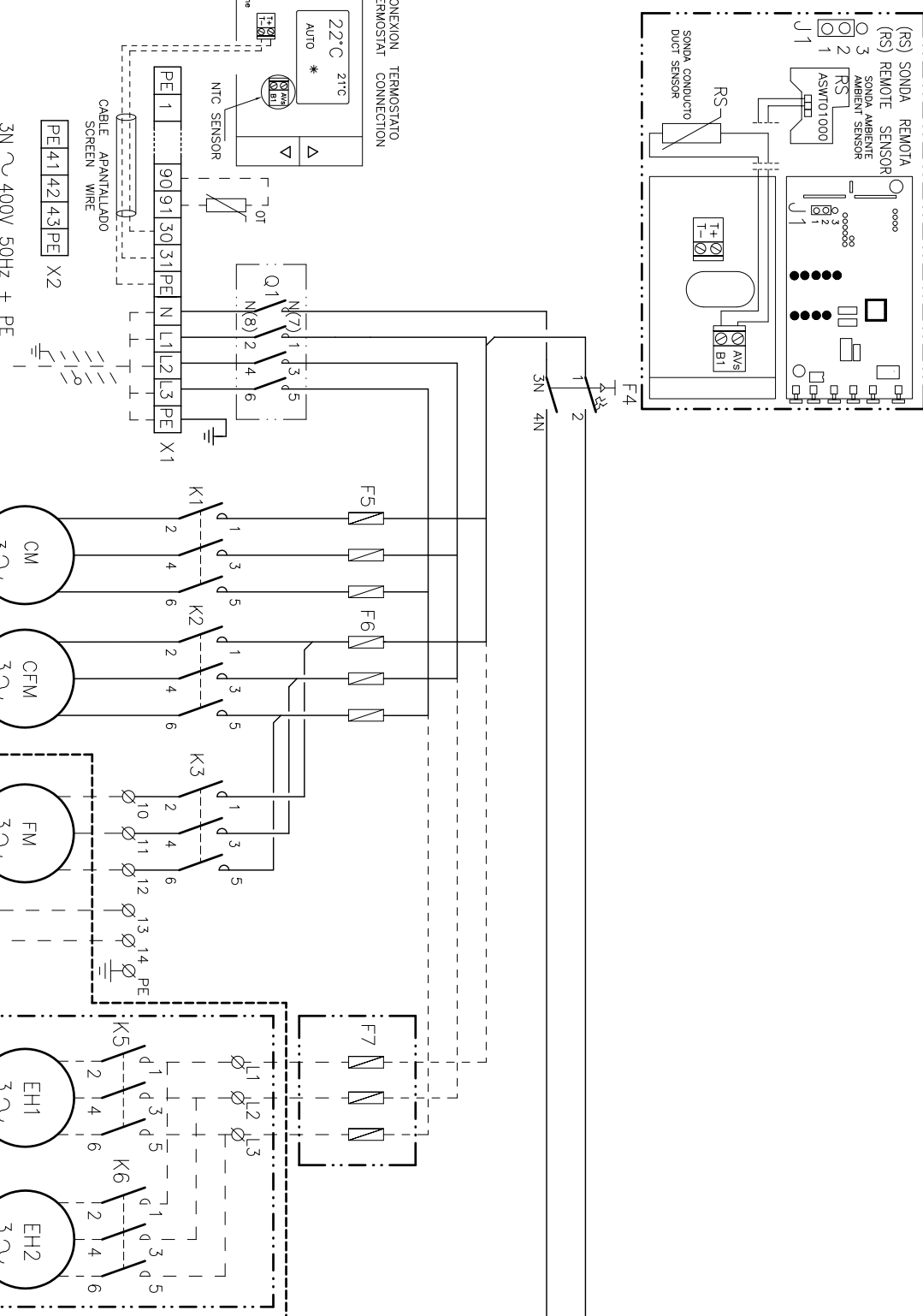
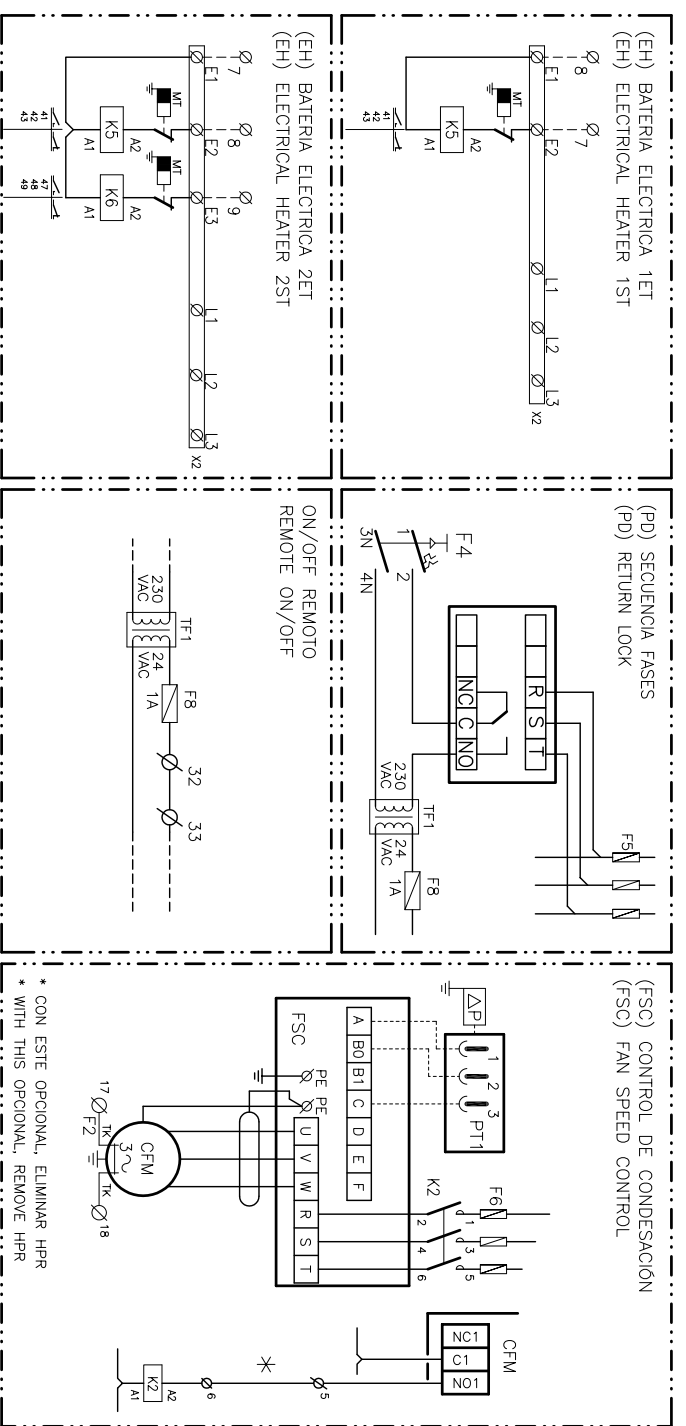
Lemox Refrac S.A. ESQUEMA ELECTRICO ELECTRICAL DIAGRAM

FLOCK 10-12

3Z-33-37-412 40B 3N 400V 50HZ + PE 3 ~ 230V 50HZ + PE

Elemento Opcional
Optional Element
A reader part of refrigerator
Is Made by the Installer

ELEMENTOS OPCIONALES / OPTIONAL ELEMENTS



INTENSIDAD CURRENT INTESEIT STROM	FLCK 24			FLCK 28			FLCK 30		
	Im(MCC)	Iq(LRA)	Iq(LRA)	Im(MCC)	Iq(LRA)	Iq(LRA)	Im(MCC)	Iq(LRA)	Iq(LRA)
400V 3~50Hz	CM	14,0A	99A	16,4A	123A	21,0A	127A	127A	127A
	FM	4,3A	4,3A	4,3A	4,3A	4,3A	4,3A	4,3A	4,3A
	CFM	4,7A	4,7A	4,7A	4,7A	4,7A	4,7A	4,7A	4,7A

FUSIBLES BATERIA ELEC. FUSERS ELEC. HEATER FUSIBLES RESISTENCE ELEC. SICHERUNGEN E.-HEIZUNG ZEKERING ELECTRISCHE VERHITTER	FLCK 24-28-30		
	400V 3~50Hz	FT(EH)	3x16A