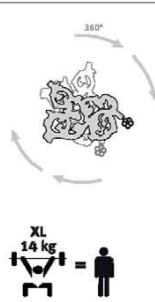
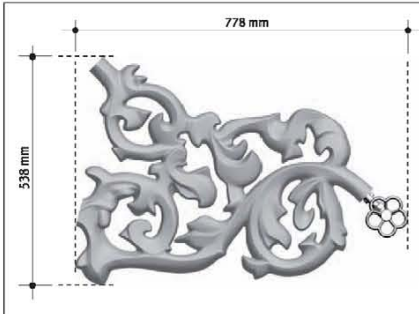




# heatwave small

Montagehandleiding - Instructions de montage  
Montageanleitung - Mounting Instructions



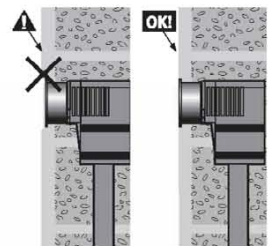
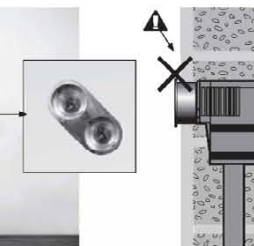
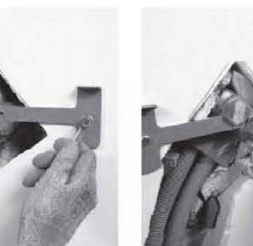
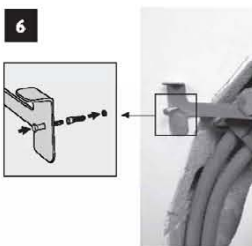
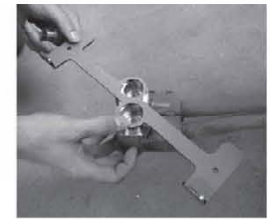
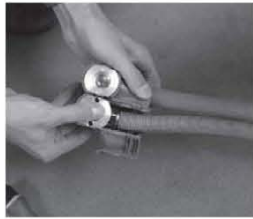
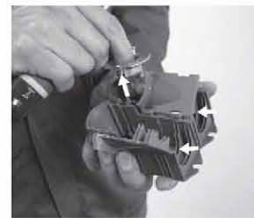
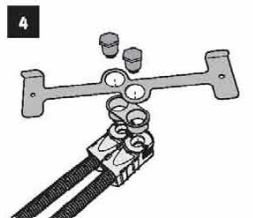
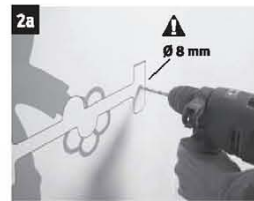
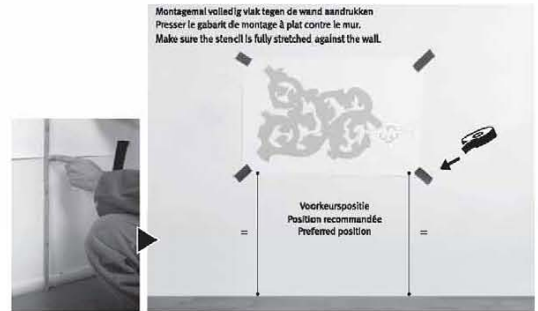
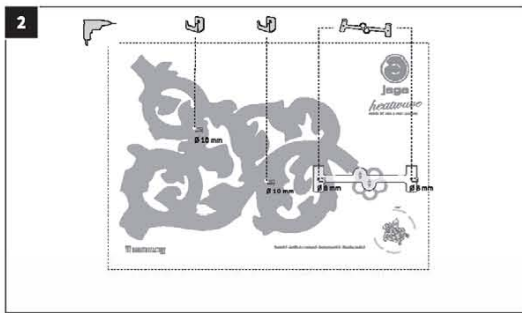
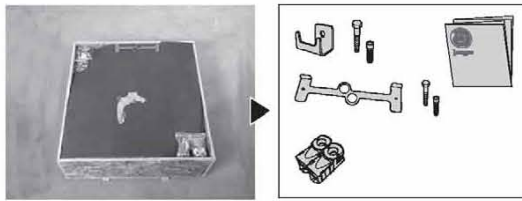
Het is mogelijk de Heatwave over een volledig bereik van 360° te monteren.  
Il est possible de monter le Heatwave sur une portée complète de 360°.  
It is possible to fix the Heatwave over a complete range of 360°.

De positie van de Heatwave in deze handleiding geeft de voorkeur van de ontwerper.  
La position du Heatwave décrite dans ce manuel a la préférence du concepteur.  
The position of the heatwave shown in the manual is the preferred position of the designer.

Onderdelen - Parts - Teile						
2x	2x Ø10	1x	2x	1x	1x	1x
2x	Ø8	1x	6x	1x	1x	2x
1x		2x	2x	1x	2x	2x
1x		2x	2x	1x	1x	1x



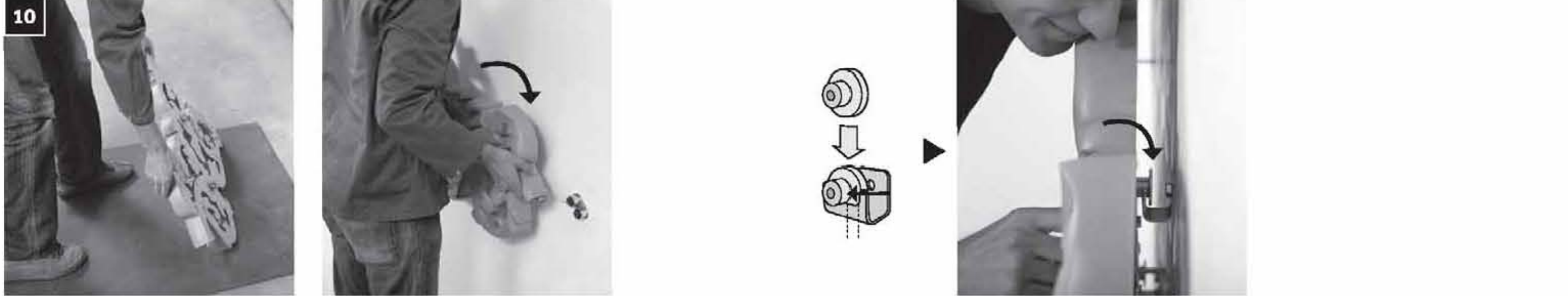
1. **N**em de montageval, de onderdelen voor de muurbevestiging en de aansluiting uit de verpakking.  
**P**renez le modèle de montage, les pièces pour la fixation murale et le raccordement dans l'emballage.  
**R**emove the mounting model, the fixings and the valve connections from the packaging.







Gebruik het schuimrubber als bescherming op de vloer tijdens de montage van de Heatwave.  
 Utilisez la mousse de caoutchouc comme protection sur le sol pendant le montage du Heatwave.  
 When mounting the Heatwave, use the foam rubber as floor protection.



**ontluchting - purge - Entlüftung - air venting**

De ontluchting van de Heatwave gebeurt automatisch via de centrale ontluchter.  
 Tijdens het ontluchten moeten alle andere toestellen op hetzelfde circuit afgesloten worden.  
 La purge du Heatwave se déroule automatiquement par le bails du purgeur central. Pendant la purge, tous les autres appareils branchés sur le même circuit doivent être fermés.  
 Air venting of the Heatwave is done through the central air release vent.  
 Whilst purging is in progress ensure all other connections on the circuit are closed.

**aansluiting - raccordement - Anschluß - connection**

De montagehandleiding voor het monteren van de aansluiting bevindt zich in de verpakking van het ventiel.  
 Le manuel d'instruction pour le montage du raccordement se trouve dans l'emballage du ventileur.  
 The connection set mounting instruction can be found in the valve packaging

