



Stellantrieb
Servomoteur
Actuator
Servomotore
Servomotor
Ställdon
Servomotor

MV 505862

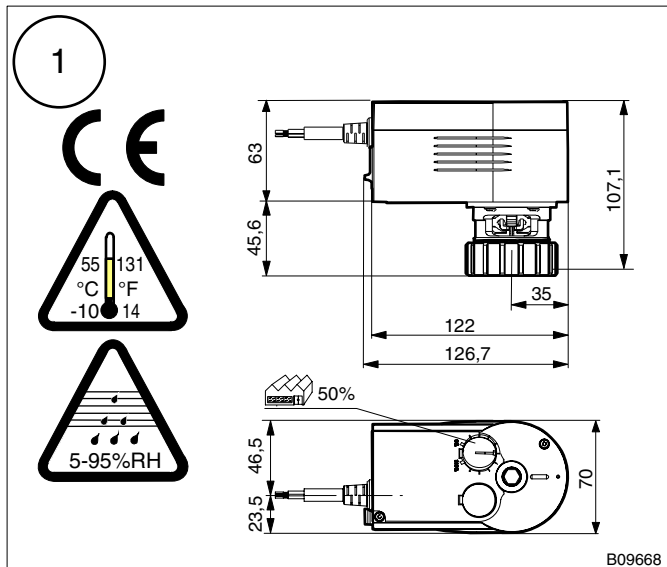
Montagevorschrift
Instructions de montage
Fitting instructions
Istruzioni di montaggio
Instrucciones de montaje
Monteringsanvisning
Montagevoorschrift

M 1771250
 1771251
 Y07551

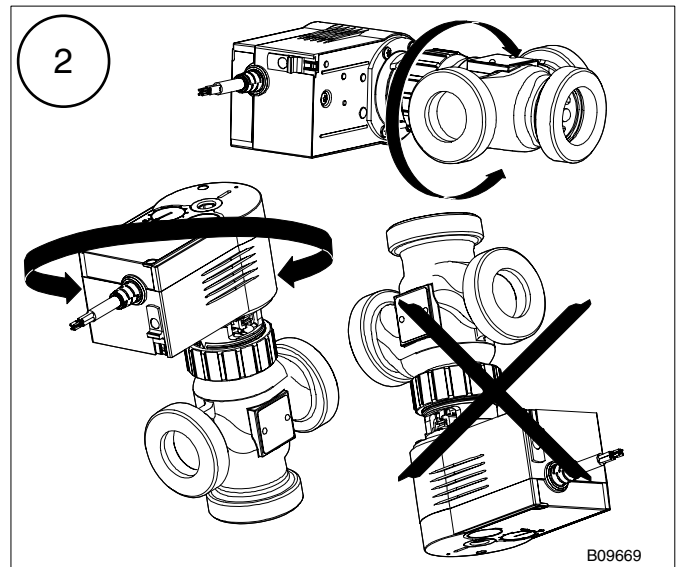
M 1771211
 Y07552

Installationsanweisung für die Fachkraft / Monteur
 Conseils d'installation pour le spécialiste / monteur
 Guidelines for the technician / fitter
 Informazioni per il personale specializzato di montaggio
 Instrucciones para el especialista del ramo / montador
 Installatietip voor de vakman / monteur
 Installationsinstruktion för installatör / montör

Für den Einsatz in üblicher Umgebung
 Pour usage dans un environnement normal
 For use in normal environments
 Per impiego in ambiente usuale
 Para el uso en ambiente normal
 För användning i normal miljö
 Voor toepassing in normale omgeving



B09668

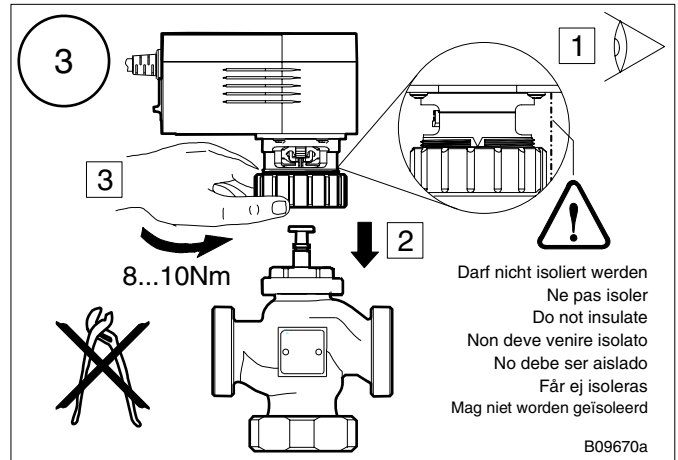


B09669

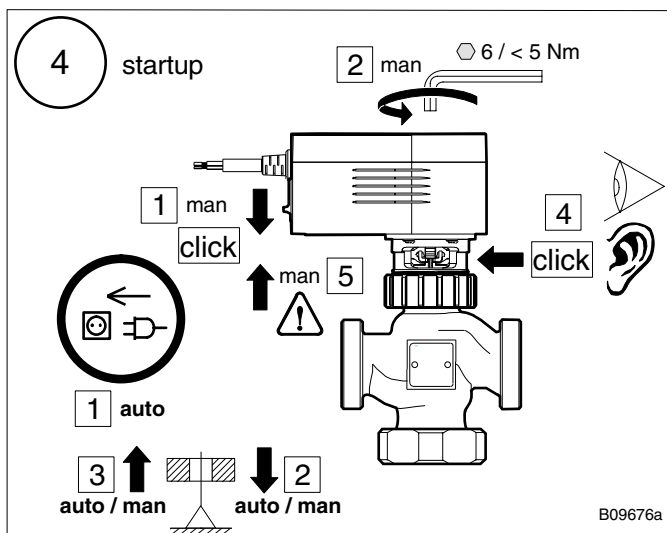
Installationsanweisung für die Elektrofachkraft
 Notice d'installation pour l'électricien
 Guidelines for the electrician
 Informazioni per l'installatore elettrico
 Instrucciones de instalación para el electricista
 Installationsinstruktion för behörig elektriker
 Installatie aanwijzing voor de elektromonteur

Einsatz bei defektem Kabel verboten
 Usage interdit avec câble défectueux
 Do not use if the cable is defective
 Impiego vietato nel caso di cavo danneggiato
 Está prohibido el uso con un cable defectuoso
 Förbjuden att använda vid skadad kabel
 Gebruik bij defecte kabel verboden

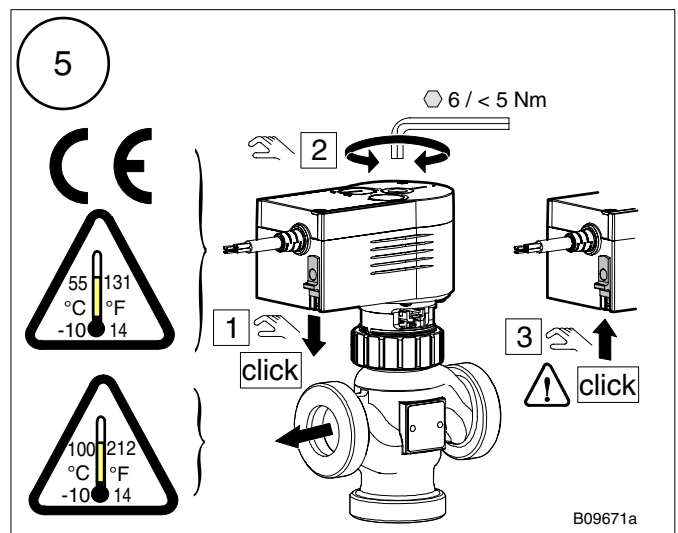
Verschmutzungsgrad III, Überspannungskategorie III, nach EN 60730
 Degré de pollution III, catégorie surtension III, selon EN 60730
 Pollution degree III, over voltage category III, as per EN 60730
 Grado di insudiciamento III, categoria di sovratensione III, a norme EN 60730
 Grado de suciedad III, Categoría de altatención III, según EN 60730
 Grad av nedsmutsningsgrad III, Överspanningskategori III, enligt EN 60730
 Veruulingsgraad III, Overspanningskategorie III, volgens EN 60730



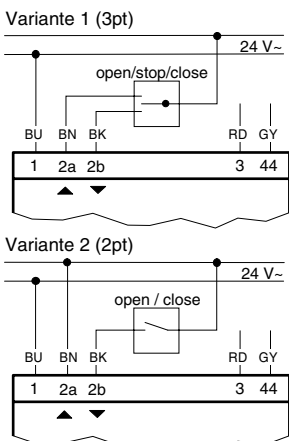
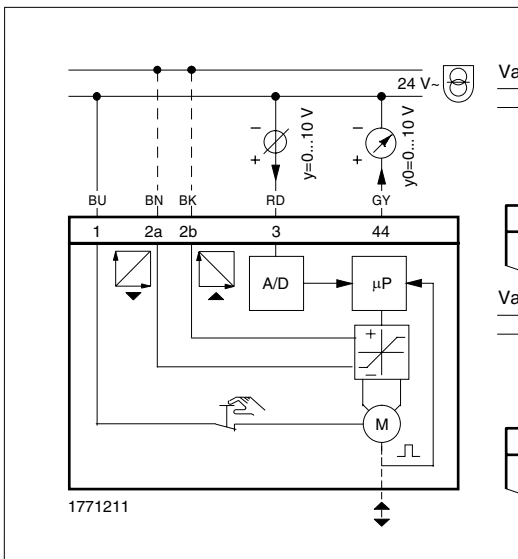
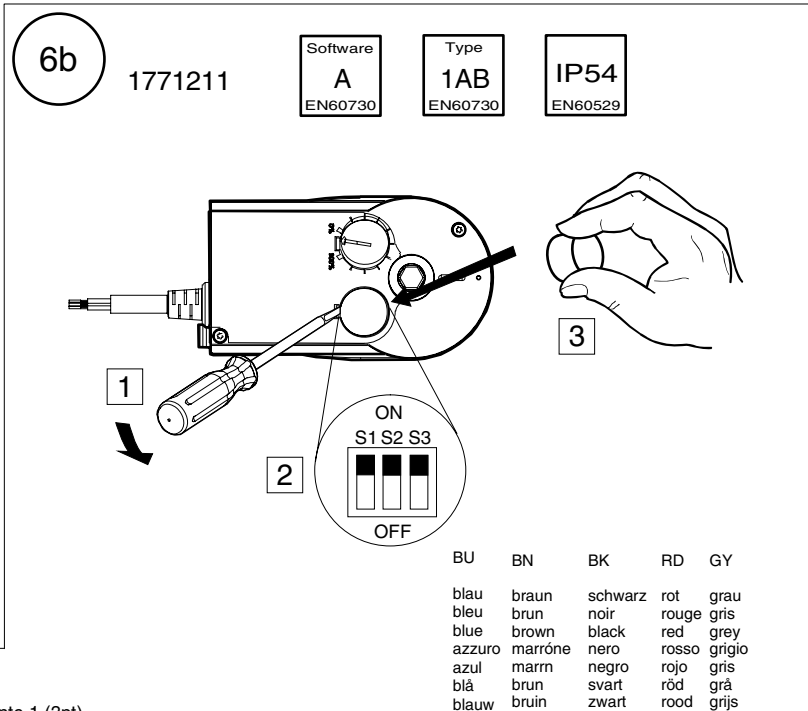
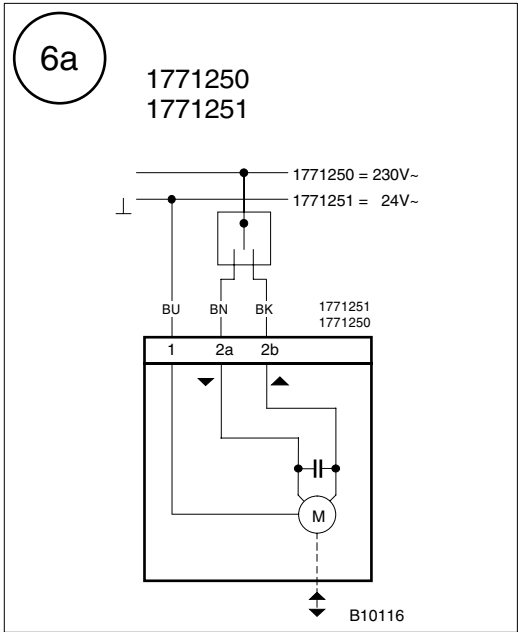
B09670a



B09676a



B09671a



1771211 8mm	S1	S2	S3
120s	off	on	-
120s	on	on	-
60s	on	off	-
60s	off	off	-
	-	-	on $\hat{=}$ lin.
	-	-	off $\hat{=}$ %
	on	on	on

Variante 1 (3pt) ; 2 (2pt)

1771211 8mm	S1	S2	S3
120s	off	on	-
120s	on	on	-
60s	on	off	-
60s	off	off	-
	-	-	on $\hat{=}$ lin.
	-	-	off $\hat{=}$ %
	on	on	on

B10117a

