

**SPLIT TYPE  
ROOM AIR CONDITIONER  
FLOOR CONSOLE /  
UNDER CEILING  
DUAL type (50Hz)**

# **SERVICE MANUAL**

<b>Models</b>	<b>Indoor unit</b>	<b>Outdoor unit</b>
	ABY14RGA-W	AOY14RGJ

## **C O N T E N T S**

SPECIFICATIONS .....	1
OUTLINE AND DIMENSIONS .....	2
CIRCUIT DIAGRAM .....	4
REFRIGERANT SYSTEM DIAGRAM .....	5
ERROR DISPLAY .....	6
INDOOR PRINTED CIRCUIT BOARD CIRCUIT DIAGRAM .....	7
P.C. BOARD LAYOUTS .....	8
DISASSEMBLY ILLUSTRATION .....	10
PARTS LIST .....	19

# S P E C I F I C A T I O N S

TYPE		COOL & HEAT
INDOOR UNIT		ABY14RGA-W
OUTDOOR UNIT		AOY14RGJ
COOLING CAPACITY	(W)	3,950 – 4,050
HEATING CAPACITY	(W)	4,900 – 5,000

## ELECTRICAL DATA

POWER SOURCE	(V)		220 – 240
FREQUENCY	(Hz)		50
RUNNING CURRENT	(A)	COOLING	7.6 – 8.0
		HEATING	7.6 – 8.0
INPUT WATTS	(W)	COOLING	1,620 – 1,760
		HEATING	1,610 – 1,730
E.E.R.	(W/W)	COOLING	2.44 – 2.30
		HEATING	3.04 – 2.89
MOISTURE REMOVAL	(ℓ/h)		1.6
AIR CIRCULATION-Hi	(m <sup>3</sup> /hr)		640
REFRIGERANT R-22	(g)		1,100

## COMPRESSOR

TYPE	Hermetic type, Permanent split condenser, 2 pole, Single phase, Induction motor
CODE	QJ282PC24A

## FAN MOTOR

POWER SOURCE	(V)		240
INDOOR UNIT	TYPE		MFA-14CTT
	HI-SPEED	(r.p.m.)	850
	MED-SPEED	(r.p.m.)	760
	LO-SPEED	(r.p.m.)	670
OUTDOOR UNIT	TYPE		MFB-14VTT
	FAN SPEED	(r.p.m.)	750

## DIMENSIONS

INDOOR UNIT	H x W x D (mm)	199 x 990 x 655
OUTDOOR UNIT		530 x 750 x 250

## WEIGHT

INDOOR UNIT	GROSS / NET (kg)	39 / 30
OUTDOOR UNIT		40 / 38

## ADDITIONAL REFRIGERANT CHARGE

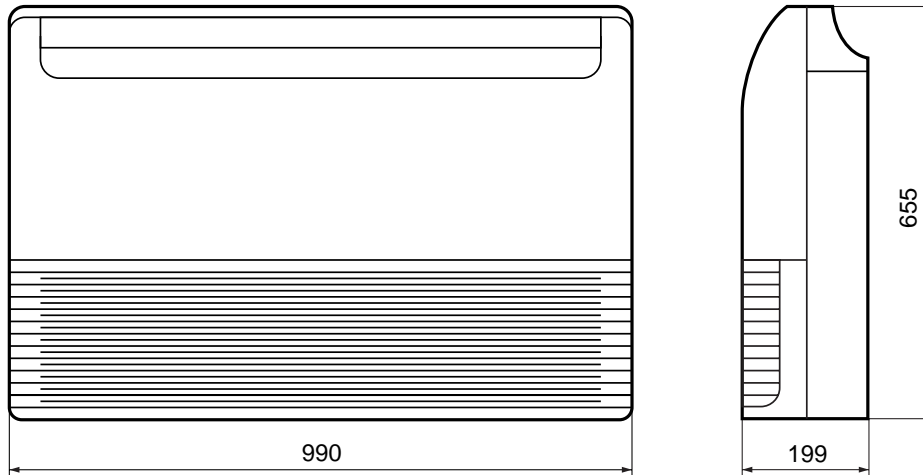
PIPE LENGTH	5 m ( 16 ft )	7.5 m ( 25 ft )	10 m ( 33 ft )
FULL CHARGE AMOUNT	1,100 g (38.8 oz)	1,175 g (41.4 oz)	1,250 g (44.1 oz)

Note : In the case that 5 m is exceeded, when using a connection pipe other than that in the table, charge additional refrigerant with 30 g (1.1 oz) / 1 m (3.3 ft) as the criteria.

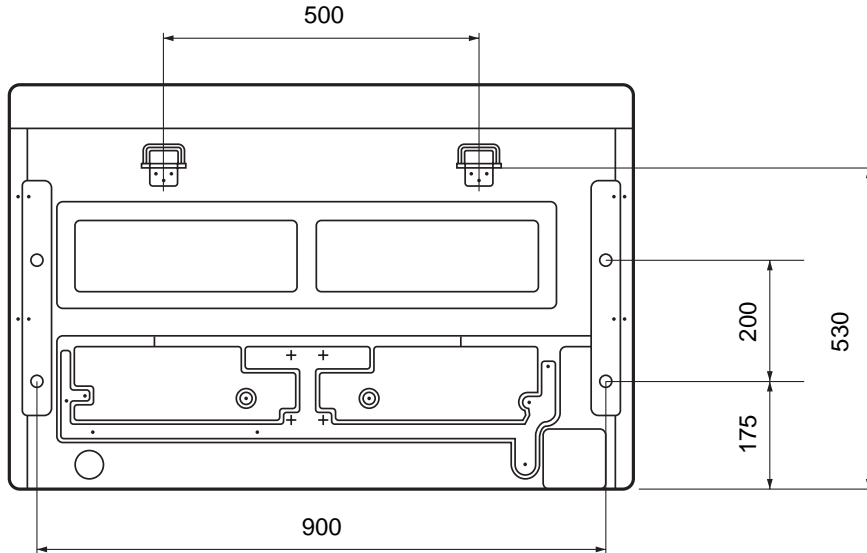
# OUTLINE AND DIMENSIONS

## INDOOR UNIT

Unit : mm



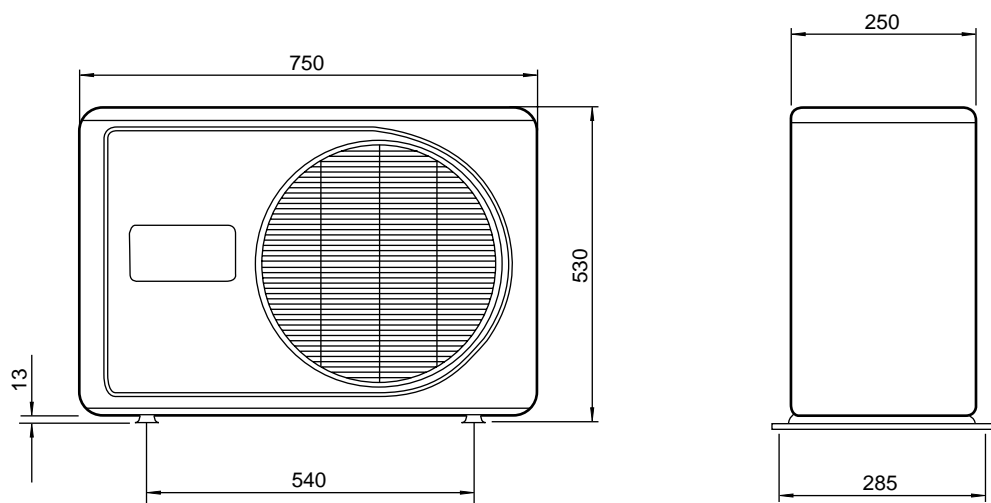
## [Rear View]



# OUTDOOR UNIT

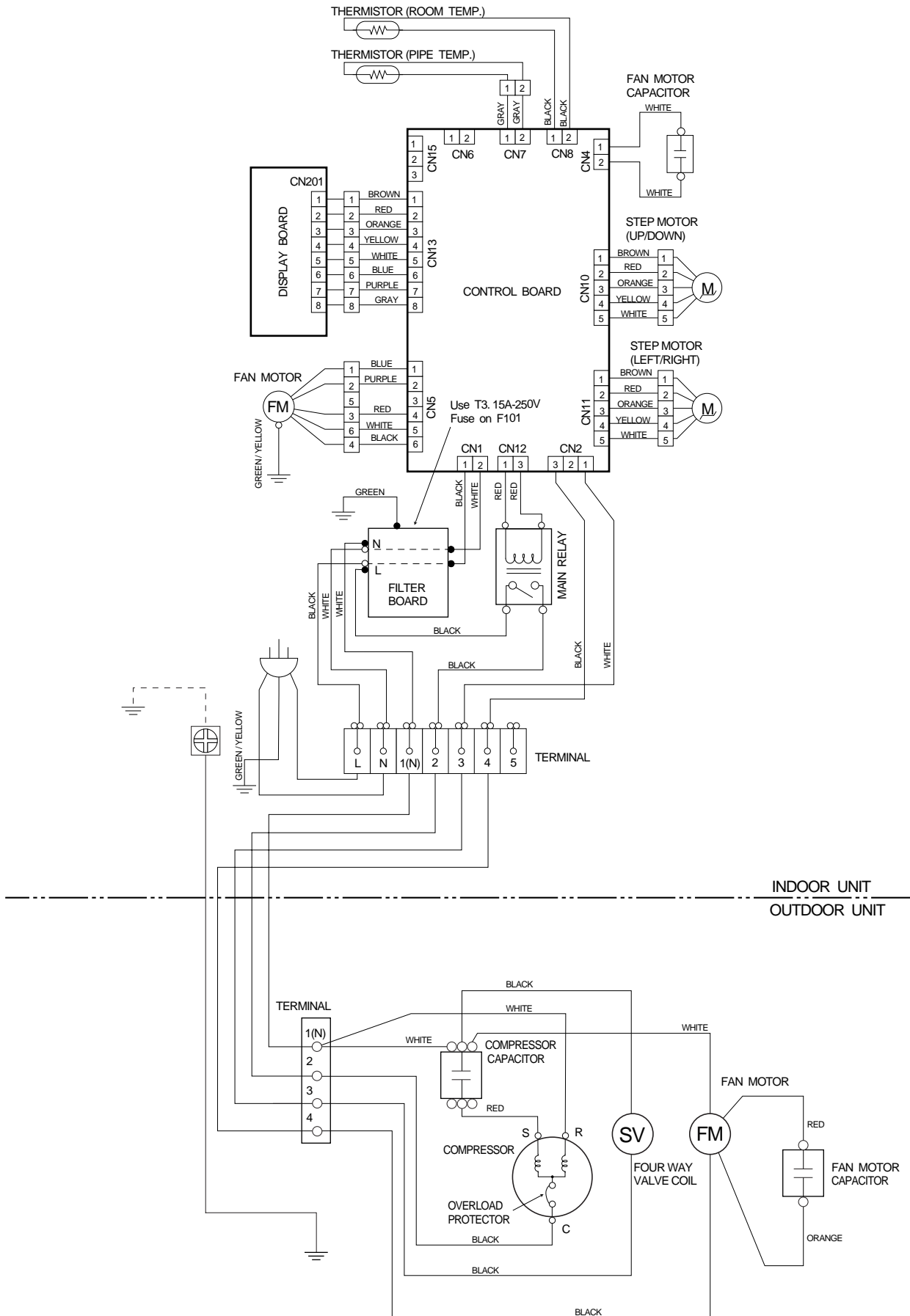
Unit : mm

Model : AOY14RGJ



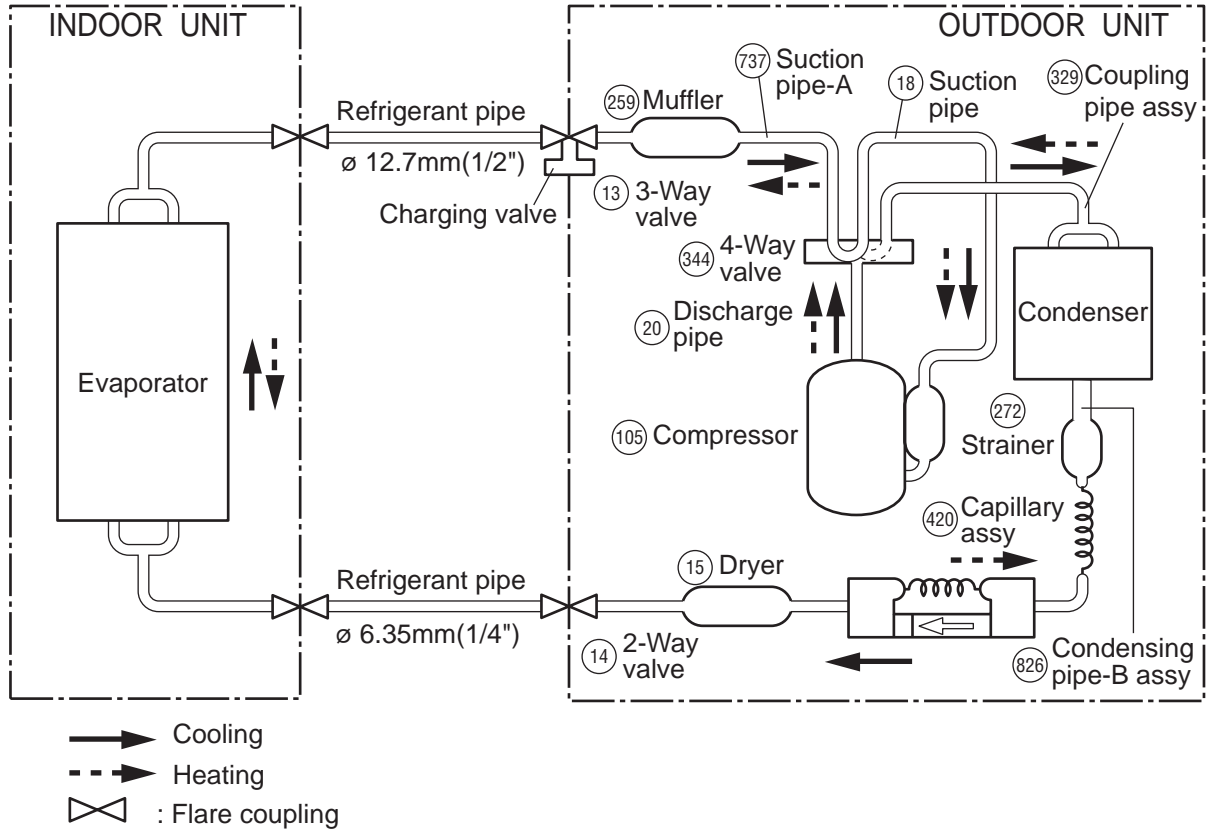
# C I R C U I T   D I A G R A M

**Models : ABY14RGA-W / AOY14RGJ**



# REFRIGERANT SYSTEM DIAGRAM

Models : ABY14RGA-W / AOY14RGJ



# ERROR DISPLAY

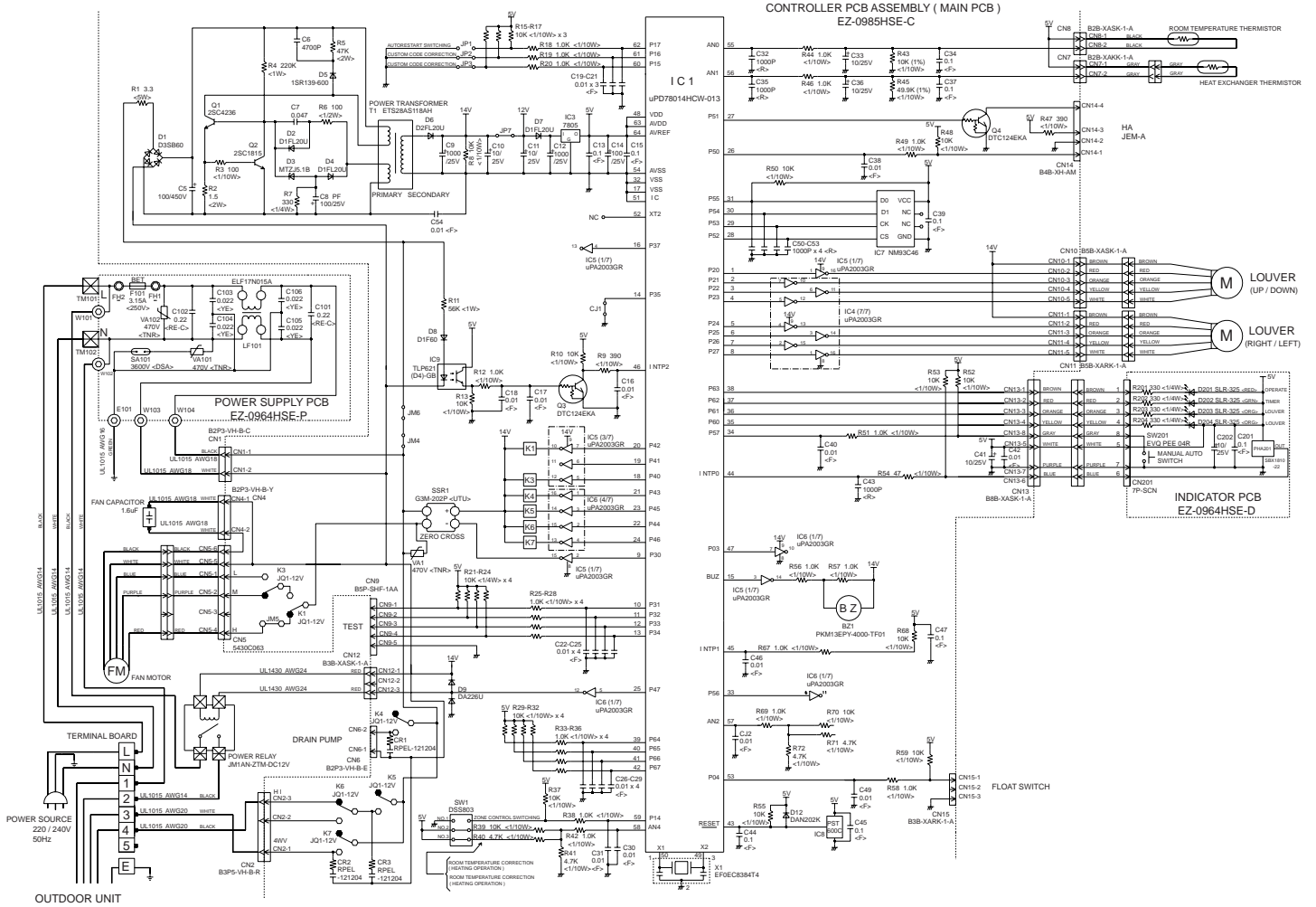
- Error

The OPERATION and TIMER lamps operate as follows according to the error contents.

Error display	Error contents
<p>OPERATION LAMP: Two quick flashes repeated. Each flash is 0.5 sec ON and 0.5 sec OFF, with a 5 sec interval between flashes.</p> <p>TIMER LAMP: 0.1 sec ON/OFF repeated.</p>	Room temperature thermistor abnormal temperature detected
<p>OPERATION LAMP: Three quick flashes repeated. Each flash is 0.5 sec ON and 0.5 sec OFF, with a 5 sec interval between flashes.</p> <p>TIMER LAMP: 0.1 sec ON/OFF repeated.</p>	Piping thermistor abnormal temperature detected

# INDOOR PRINTED CIRCUIT BOARD CIRCUIT DIAGRAM

Model : ABY14RGA-W

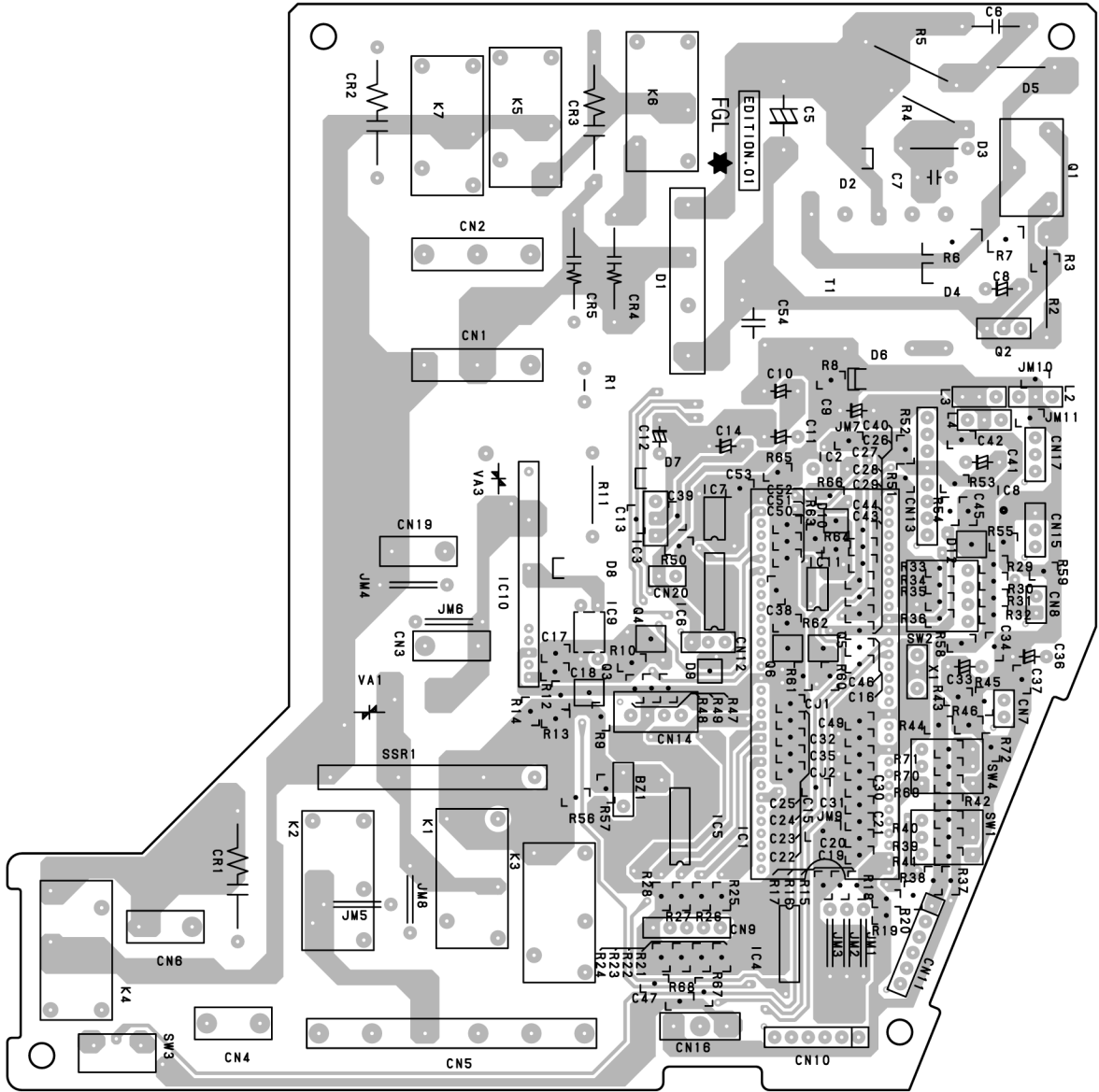




# P.C. BOARD LAYOUTS

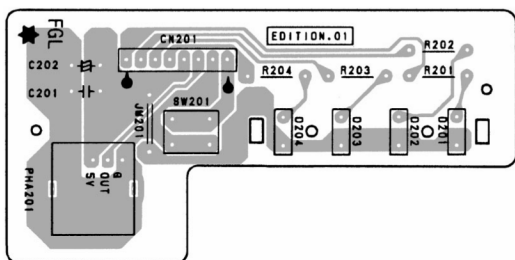
## CONTROLLER P.C.B. ASSEMBLY (MAIN PCB)

(Viewed from the solder side)



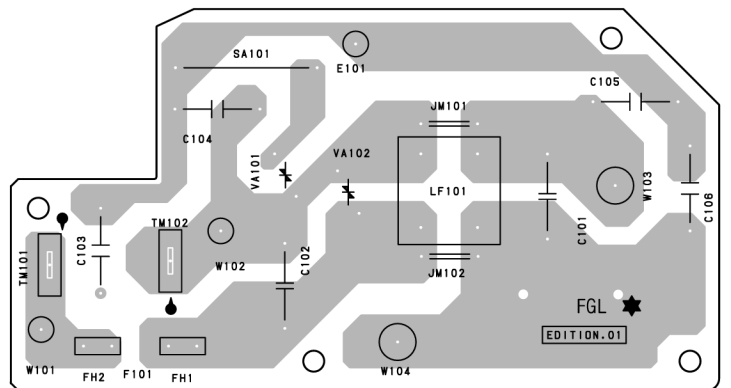
## INDICATOR P.C.B. ASSEMBLY

(Viewed from the solder side)



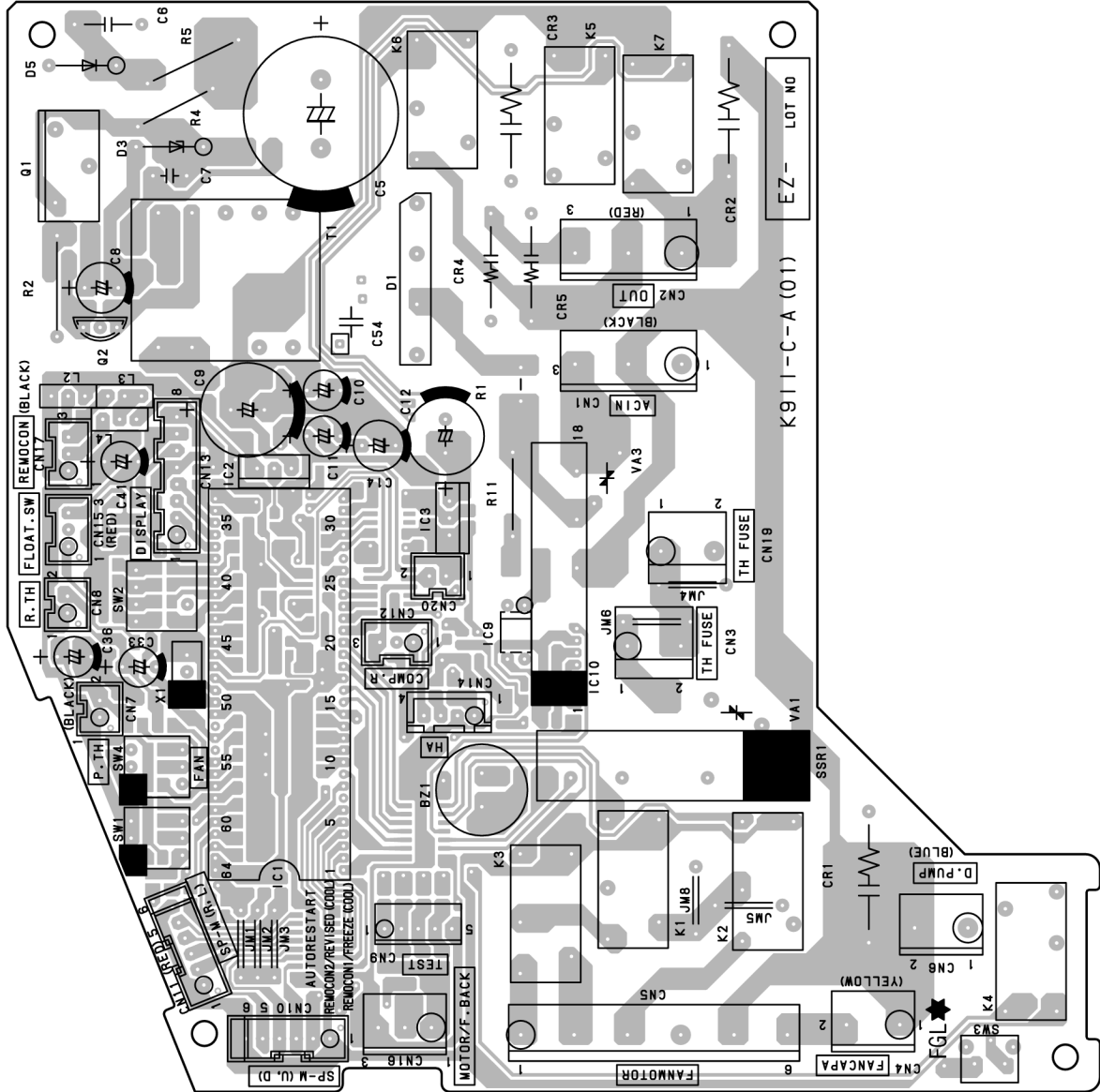
## POWER SUPPLY P.C.B. ASSEMBLY

(Viewed from the solder side)



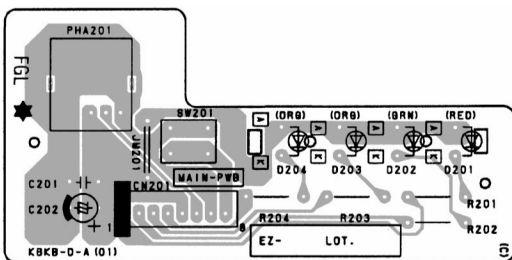
# CONTROLLER P.C.B. ASSEMBLY (MAIN PCB)

(Viewed from the component side)



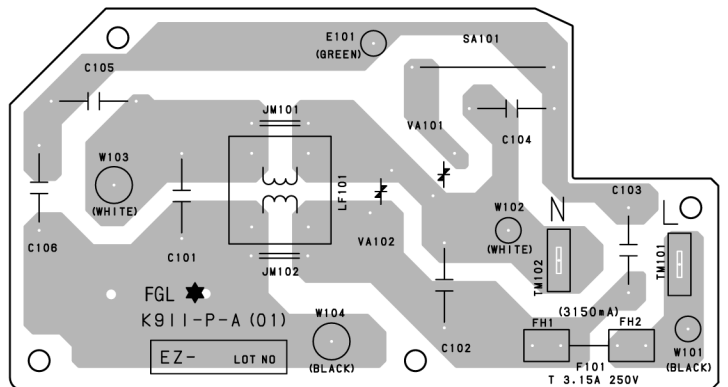
## INDICATOR P.C.B. ASSEMBLY

(Viewed from the component side)



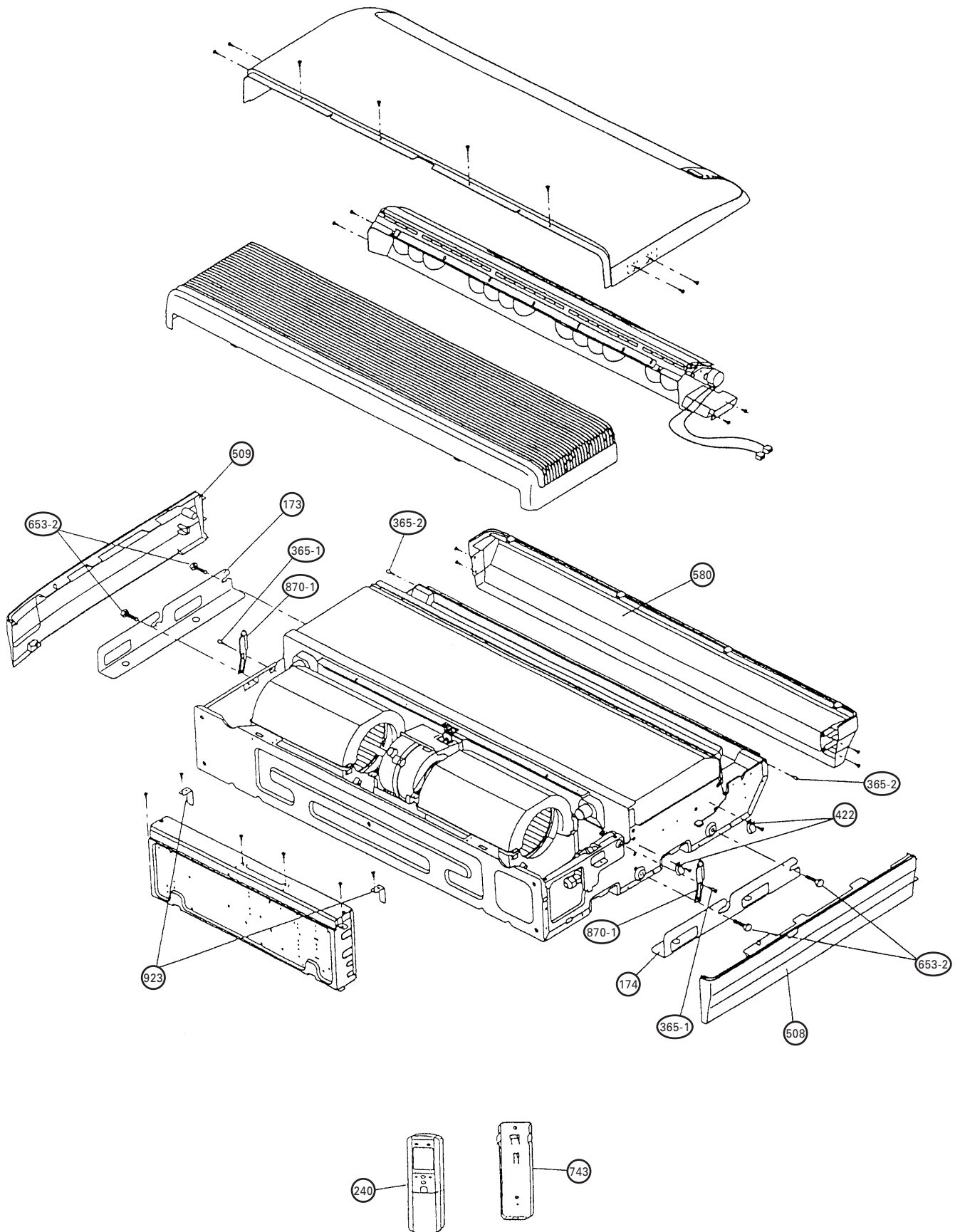
## POWER SUPPLY P.C.B. ASSEMBLY

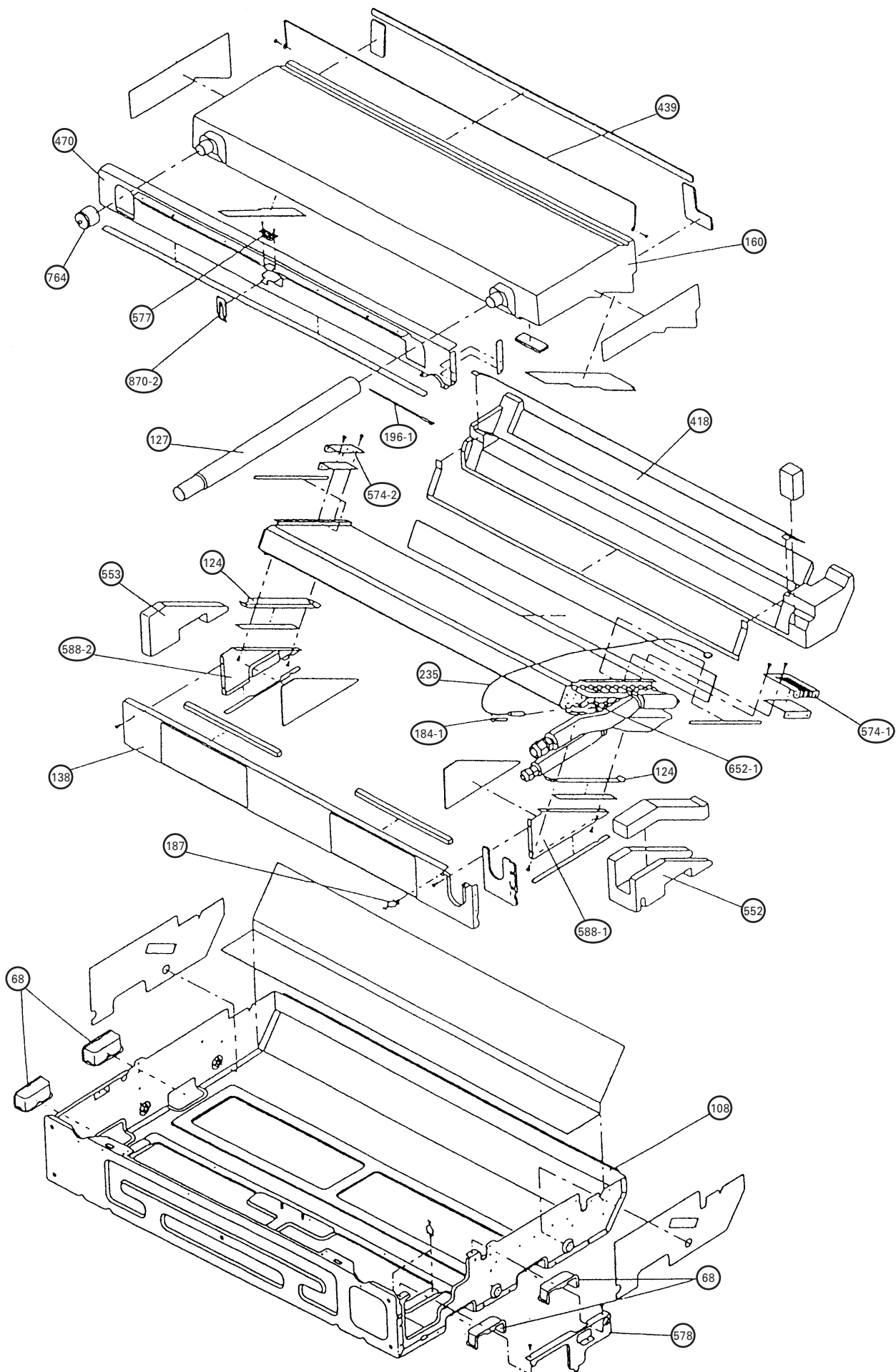
(Viewed from the component side)

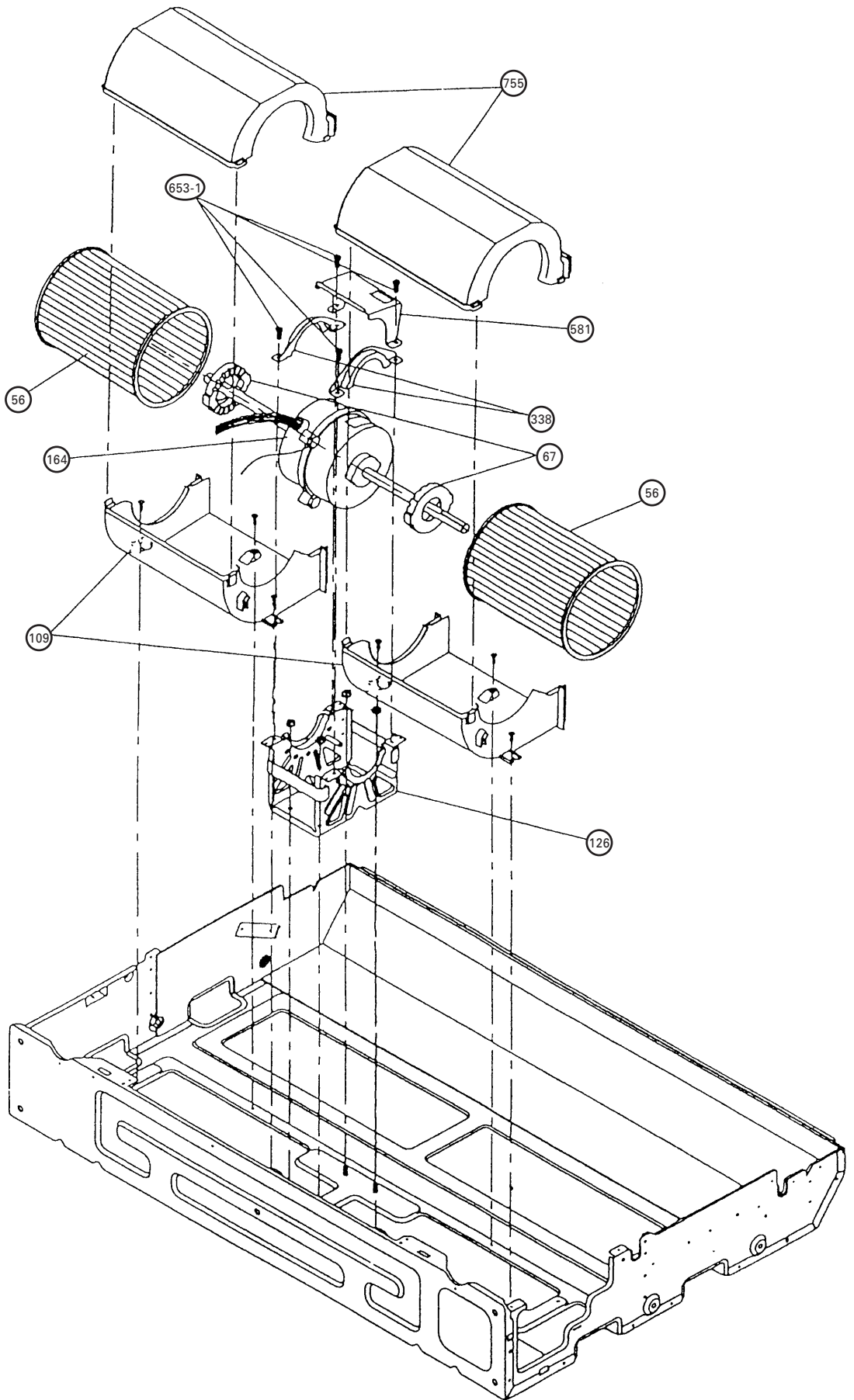


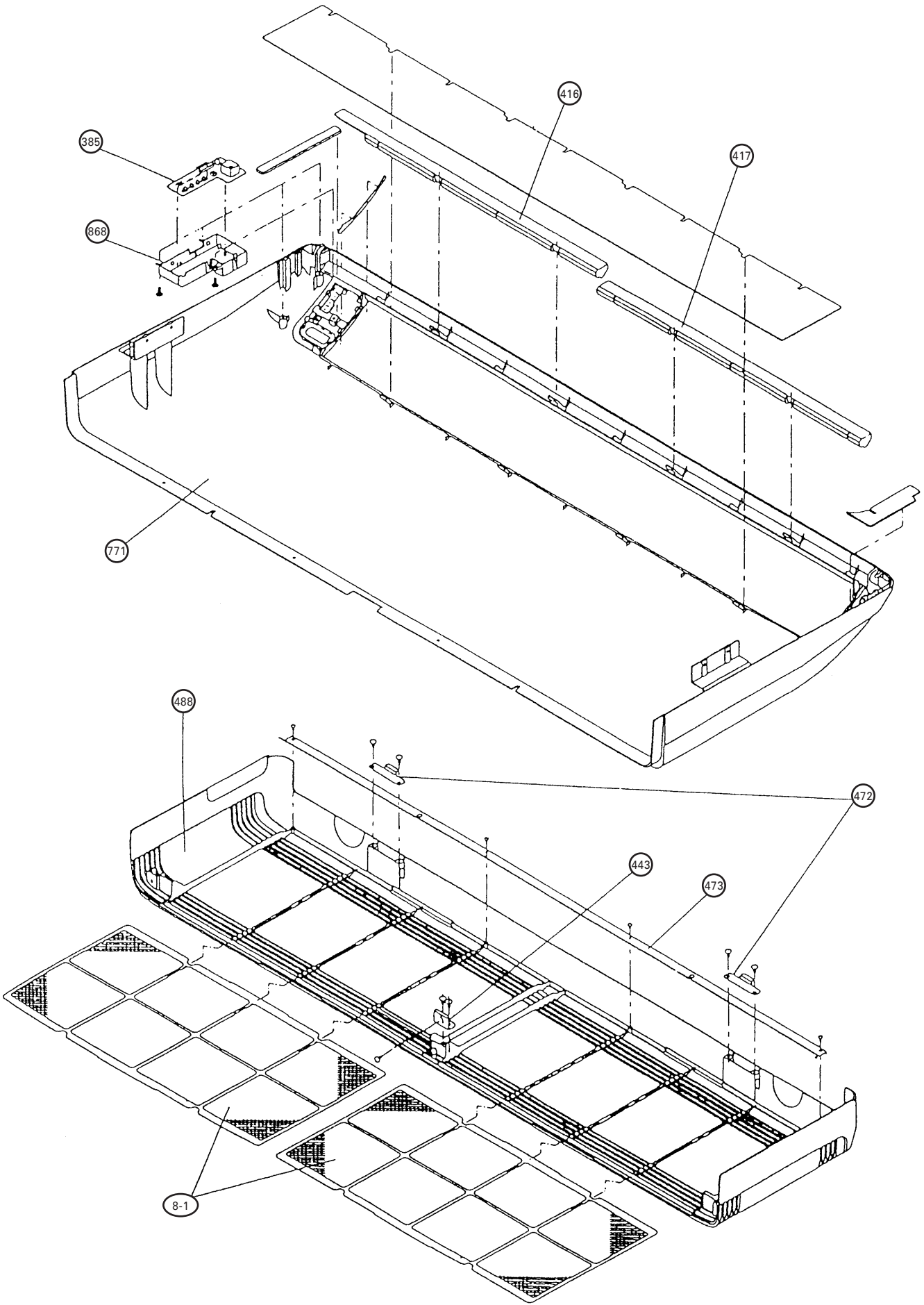
# DISASSEMBLY ILLUSTRATION

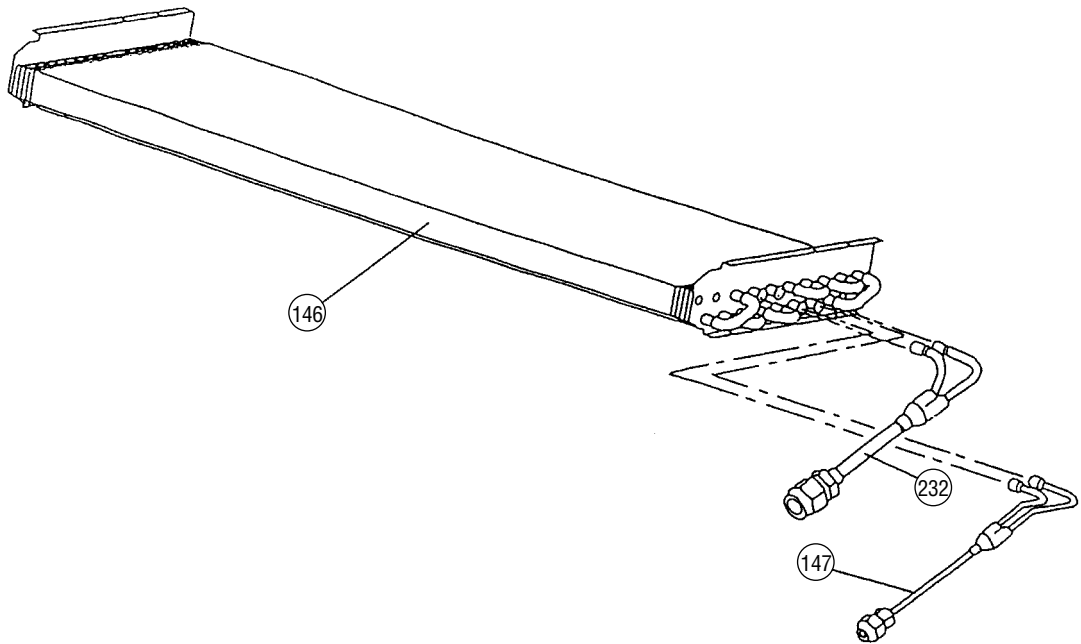
Model : ABY14RGA-W

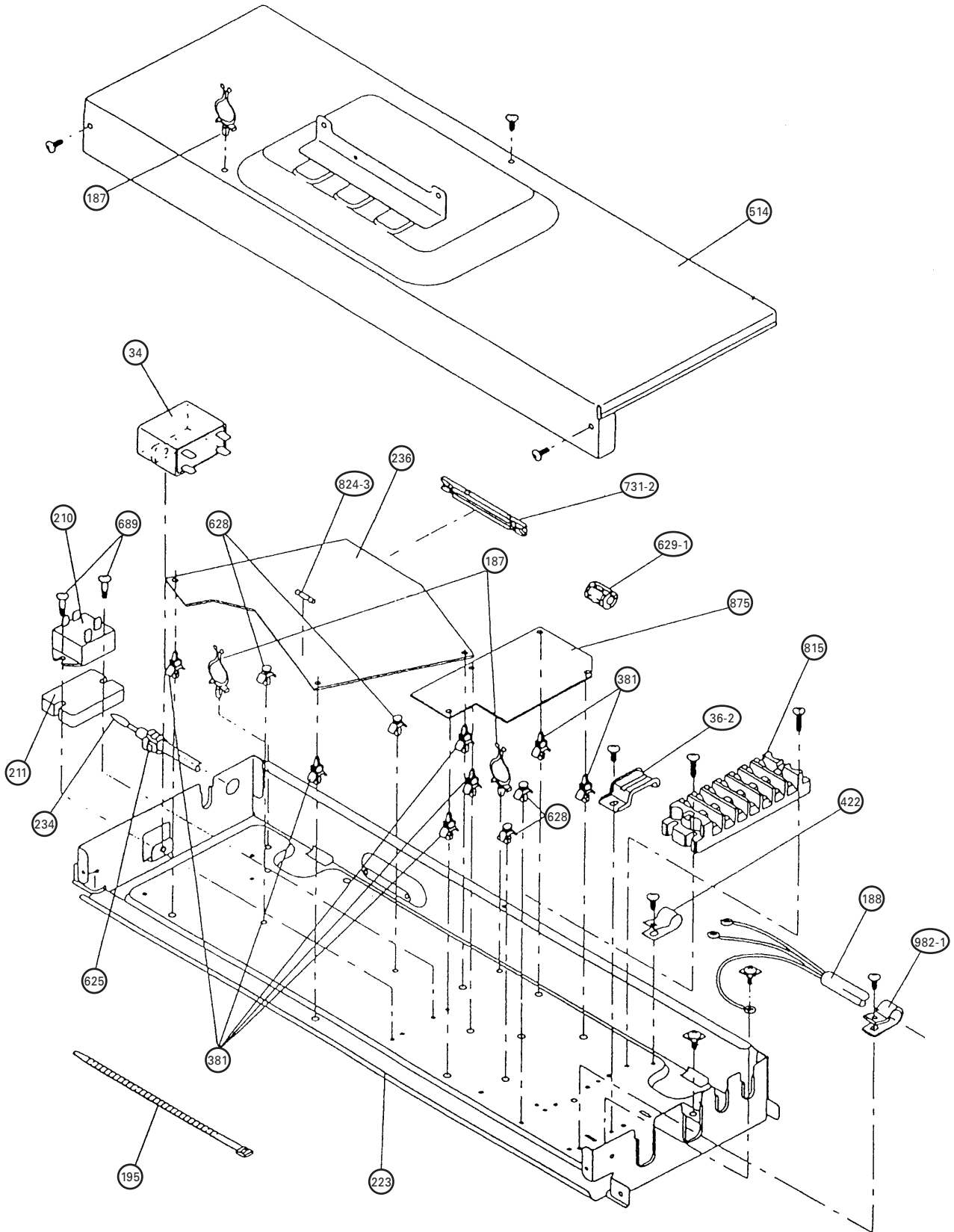




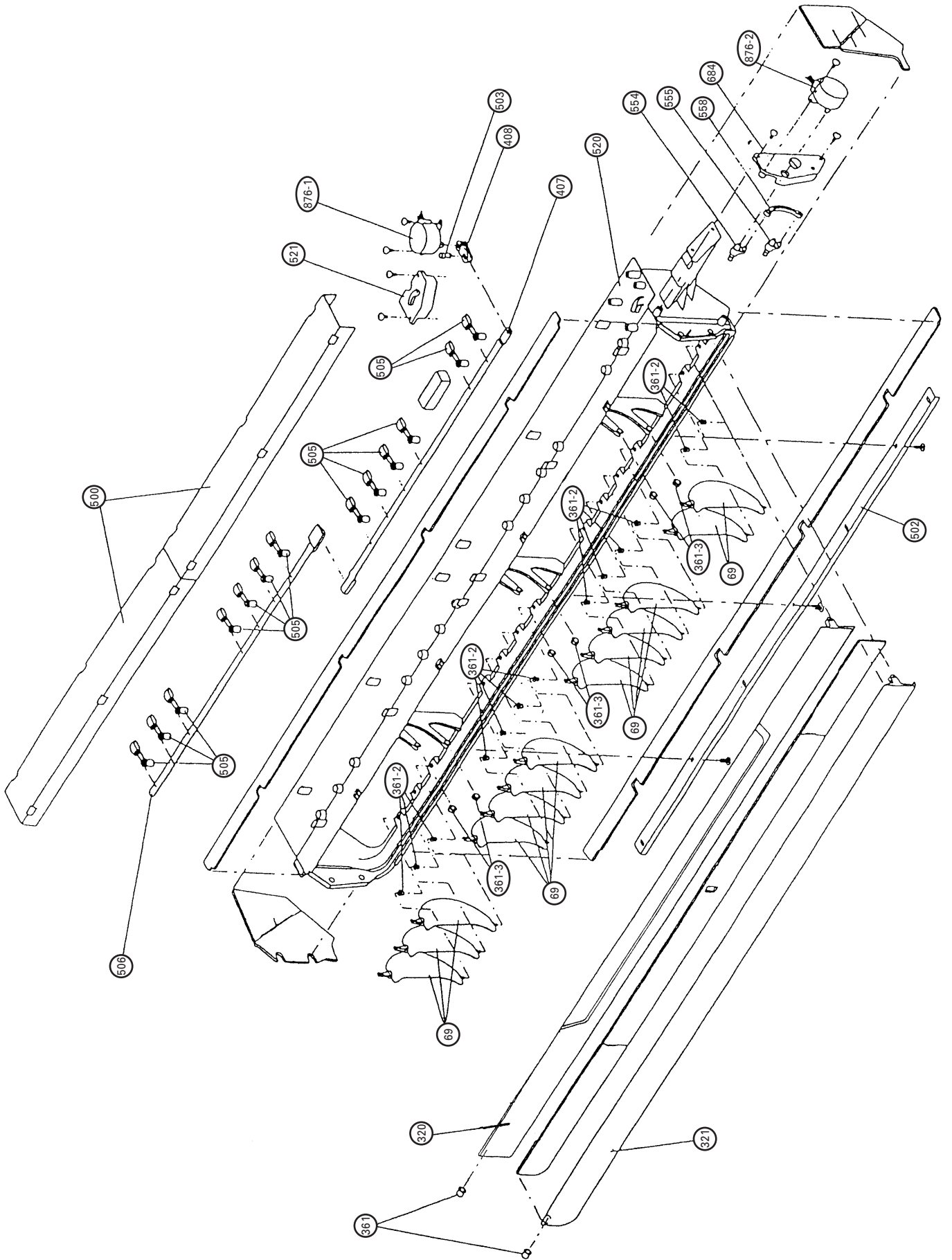




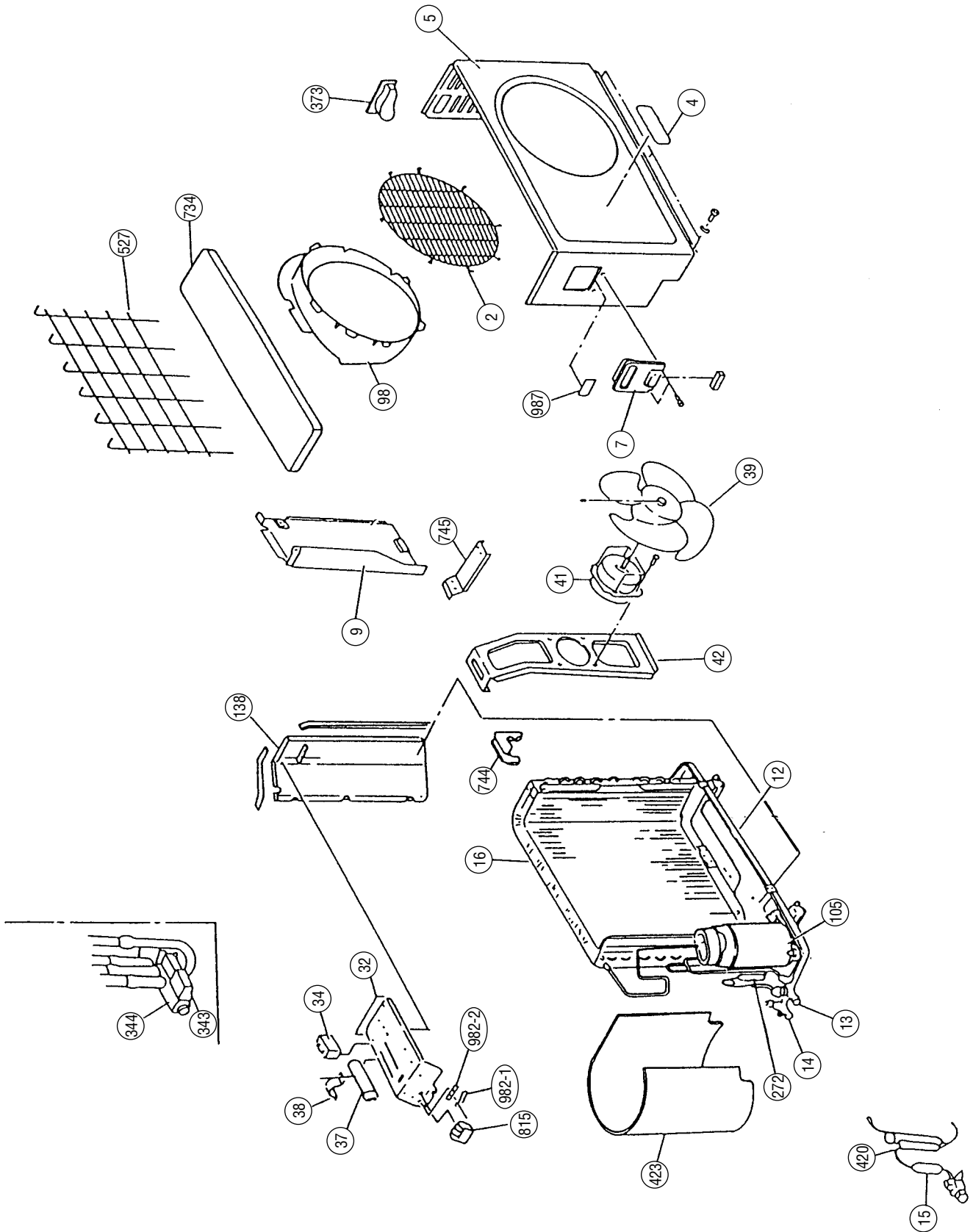


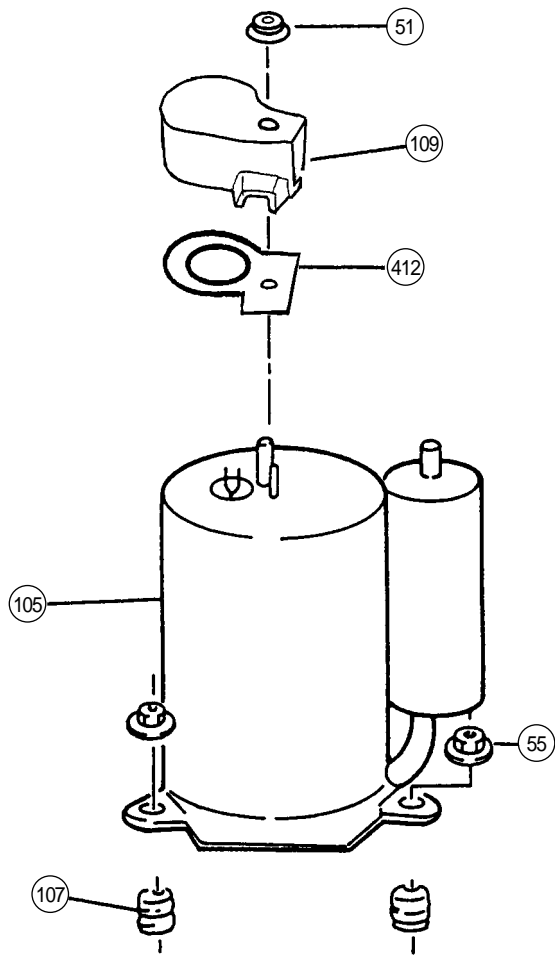






Model : AOY14RGJ





# PARTS LIST

## INDOOR UNIT

When you order parts, please make a photocopy of this page and fill the number of the parts in the "Order" column.


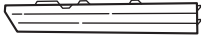

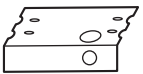

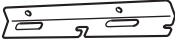
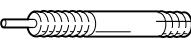



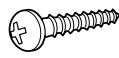




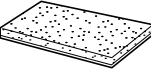

Ref. No.	Description	Part No.	Ord. Q'ty	Ref. No.	Description	Part No.	Ord. Q'ty
8-1	Air Filter	9358567029		472	Grille Support	9358602003	
34	Capacitor (Fan Motor) 1.6μF/400V	9704305039		473	Filter Bracket	9358607008	
36-2	Cord Holder Metal	9356362008		488	Grill-F	9358532010	
56	Sirocco Fan Assy	9358621004		500	Protect Cover	9358564004	
67	Rubber (Vibration-proof)	313659068604		502	Support Stay	9358599006	
68	Cap. Plastic	9358563007		503	Louver Shaft	9358557006	
69	Louver	9358561010		505	Louver Stopper	9358555002	
108	Base Assy	9359061014		506	Louver Rod	9358559000	
109	Casing, Plastic	9358543009		508	Cosmetic Panel-R	9358535011	
124	Dew Proof Plate	9359196006		509	Cosmetic Panel-L	9358536018	
126	Motor Fixing Table Assy	9358591000		514	Control Box Cover	9359097006	
127	Drain Hose Assy	9359242000		520	Flap Base	9358537015	
138	Separate Wall-A	9358584002		521	Louver Link Cover	9358558003	
146	Evaporator Assy D516E	9359379003		552	Insulation (Eva.)-R	9358575000	
147	Inlet Pipe (Eva.) Assy, Welded	9359370000		553	Insulation (Eva.)-L	9358857007	
160	Drain Pan Assy	9358568002		554	Flap Link-Upper (Step Motor-V)	9358551004	
164	Fan Motor Assy-IN MFA-14CTT	9600778012		555	Flap Link-Lower (Step Motor-V)	9358552001	
173	Hanger Bracket-L	9358596005		558	Motor Rod-A (Step Motor-V)	9358550007	
174	Hanger Bracket-R	9358595008		574-1	Evaporator Fixture-R (Bracket)	9358589007	
184-1	Thermistor Spring-A	313728262708		574-2	Evaporator Fixture-L (Bracket)	9358590003	
187	Clamp No. 1219	313361271706		577	Catch TL-119	9359096009	
188	Power Cord Assy	9900017019		578	Base Bracket (Reinforcement Metal)	9358586006	
195	Clamp SKB-100	313361275805		580	Top Cover	9358534014	
196-1	Clamp SKB-3M	312300787605		581	Protector, Metal (Fan Motor)	9359282006	
210	Main Relay	9356781007		588-1	Evaporator Bracket-R	9358587003	
211	Cushion Rubber	313806328306		588-2	Evaporator Bracket-L	9358588000	
223	Control Box	9358600016		625	Cord Bushing KR-51	9359240006	
232	Outlet Pipe (Evaporator) Assy	9359374008		628	Locking Spacer-B	313005446558	
234	Thermistor Assy	9703299025		629-1	EMI Filter	0400197119	
235	Thermistor Assy-Pipe	9701102068		652-1	Thermistor Holder Pipe	313806262805	
236	Controller PCB Assy EZ-0975HSE-C	9701941124		653-1	Bolt (Fan Motor Fixing)	0700156014	
240	Remote Control Unit AR-DL1	9359913016		653-2	Bolt	0700190018	
320	Flap (Upper)-F	9358538012		684	Motor Base	9358562000	
321	Flap (Lower)	9358541012		689	Screw, Grip Tapping SN+4016 ZNY w/Grip	9357837000	
338	Motor Fixture	9358594001		731-2	Holder (Guide Rail)	0600241018	
361	Bushing	9357942001		743	Remote Control Unit Holder	9359955016	
361-2	Bushing-B, Plastic	9358554005		755	Casing Cover	9358544006	
361-3	Bushing-C, Plastic	9358553008		764	Drain Cap	9358746004	
365-1	Special Screw	9359092001		771	Panel Assy "FUJITSU"	9359076018	
365-2	Special Screw	9359091004		815	Terminal-7P	9358660102	
381	Locking Spacer, KGLS-4S	313209391506		824-3	Fuse BET3. 15A-250V	0600222512	
385	Indicator PCB Assy EZ-0964HSE-D	9701873012		868	PCB Holder	9358547007	
407	Motor Rod	9358560006		870-1	Arm	9358565001	
408	Louver Link	9358556009		870-2	Center Arm	9359280002	
416	Insulation (Panel)-A	9358574003		875	Filter PCB Assy EZ-0964HSE-P	9702081010	
417	Insulation (Panel)-B	9358914007		876-1	Step Motor-H	9359106012	
418	Insulation (Flap Base)	9358572009		876-2	Step Motor-V	9359105015	
422	Clamp NK-10N	9359183006		923	Control Box Bracket	9358717004	
439	Drain Pan Wire	9358598009		982-1	Cord Clamp	9357864006	
443	Arm Bracket	9359281009					
470	Separate Wall-B	9358585009					

## OUTDOOR UNIT

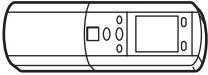
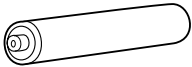


When you order parts, please make a photocopy of this page and fill the number of the parts in the "Order" column.

Ref. No.	Description	Part No.	Ord. Q'ty	Ref. No.	Description	Part No.	Ord. Q'ty
2	Fan Cover	9304109006		107	Rubber Seat-A (For Comp.)	9359425014	
4	Emblem-Rear "FUJITSU"	9351355005		109	Terminal Cover (For Comp.)	9364724003	
5	Cabinet, Painted	9302936017		138	Separate Wall Assy	9303729014	
7	Connector Cover (Cabinet)	9357970004		259	Muffler	313505083900	
9	Cabinet Rear Panel	9303744017		272	Strainer	9301340006	
12	Base Assy, Painted	9354493070		329	Coupling Pipe Assy	9352375002	
13	3-Way Valve	9364616001		343	Solenoid Coil	9704061034	
14	2-Way Valve	9364615004		344	4-Way Valve	9307556012	
15	Dryer	313523082505		373	Grip	313166178700	
16	Condenser Assy	9365670002		412	Terminal Gasket (For Comp.)	9364725000	
18	Suction Pipe	9364827001		420	Capillary Assy	9370336016	
20	Discharge Pipe Assy	9364826004		423	Noise Insulation-F	9350944019	
32	Control Box Metal-A	9355843003		527	Protection Net	9355444002	
34	Capacitor (Fan Motor)	9704305039		734	Cabinet Top Plate	9302937014	
37	Running Capacitor	9356386066		737	Suction Pipe-A	9352384004	
38	Capacitor Clamp Metal	313468061808		744	Clamp (Condenser)	313166374106	
39	Propeller Fan Assy	9351589011		745	Motor Support	313166036308	
41	Fan Motor Assy-Out	9601113010		815	Terminal-4P	9358660041	
42	Bracket (Motor)	313166243804		826	Condensing Pipe-B Assy	9353015006	
51	Special Nut M5 (For Comp.)	9359430018		982-1	Cord Clamp	9356857009	
55	Special Nut M8 (For Comp.)	9355091008		982-2	Cord Clamp-B	9356858006	
98	Fan Ring	313166296109		987	Insulation Sheet	9358372005	
105	Compressor Assy	9364723006					


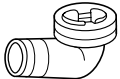
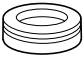
# INDOOR UNIT ACCESSORIES

Name and Shape	Application	Part No.	
Cosmetic Panel-L 		9358536018	
Cosmetic Panel-R 		9358535011	
Tapping screw (ø4 x 10) 		301171164104	
Installation template 	For positioning the indoor unit. For under ceiling type.	9359107002	
Hanger bracket-L 	For suspending the indoor unit from ceiling.	9358596005	
Hanger bracket-R 		9358595008	
Anchor bolt (M12) 		} 313806339400	
Special nut 			
Spring washer 		301821112213	
Wall bracket 		For suspending the indoor unit on the wall.	9358597002
Tapping screw (ø4 x 20) 		For fixing the wall bracket.	301141164200
Coupler heat insulator (large) 	For indoor side pipe joint. (Large pipe)	9350716012	
Nylon fastener (large) 	For fixing the coupler heat insulator.	313152375801	
Nylon fastener (small) 	For fixing the drain hose.	312300787605	
Drain hose 		9359242000	
Insulation (drain hose) 	Adhesive type 70 x 230	9359225003	
VT wire 	For fixing the drain hose L 280 mm	313806350303	

## REMOTE CONTROL UNIT

Name and Shape	Application	Part No.
Remote control unit 	Use for air conditioner operation	9359913016 (AR-DL1)
Battery (penlight) 	For remote control unit	0600185534
Remote control unit holder 	For mounting the remote control unit	9359955016
Tapping screw (ø3 x 12) 	For remote control unit holder installation	301141533125

## OUTDOOR UNIT ACCESSORIES

Name and Shape	Application	Part No.
Hexagon wrench 	For air purge	9351228019
Drain pipe 	For outdoor unit drain piping work (May not be supplied, depending on the model)	9303029015
Drain cap 		313166024302

