

**SPLIT TYPE ROOM AIR
CONDITIONER**

FLOOR CONSOLE /
UNDER CEILING

DUAL type (50Hz)

**SERVICE
MANUAL**

Models	Indoor unit	Outdoor unit
	ABY14EGA-W	AOY14EMB



C O N T E N T S

SPECIFICATIONS.....	1
OUTLINE AND DIMENSIONS.....	2
CIRCUIT DIAGRAM.....	3
REFRIGERANT SYSTEM DIAGRAM.....	4
P. C. BOARD LAYOUTS.....	5
INDOOR PRINTED CIRCUIT BOARD CIRCUIT DIAGRAM.....	7
DISASSEMBLY ILLUSTRATION.....	8
PARTS LIST.....	18

SPECIFICATIONS

TYPE		COOLING
INDOOR UNIT		ABY14EGA-W
OUTDOOR UNIT		AOY14EMB
COOLING CAPACITY	(W)	4,100 - 4,200

ELECTRICAL DATA

POWER SOURCE	(V)	220 - 240
FREQUENCY	(Hz)	50
RUNNING CURRENT	(A)	7.3 - 7.5
INPUT WATTS	(W)	1,570 - 1,670
EER	(W/W)	2.61 - 2.51
MOISTURE REMOVAL	(ℓ/hr)	1.3
AIR CIRCULATION-Hi	(m ³ /hr)	640

COMPRESSOR

TYPE		Hermetic type
CODE		RE277VHSMT
REFRIGERANT	R407C (g)	1,100

FAN MOTOR

POWER SOURCE	(V)	240
INDOOR UNIT	TYPE	MFA-14CT
	HI-SPEED (r.p.m.)	850
	MED-SPEED (r.p.m.)	760
	LO-SPEED (r.p.m.)	670
OUTDOOR UNIT	TYPE	MFB-14FTT
	FAN SPEED (r.p.m.)	610

DIMENSIONS

INDOOR UNIT	H x W x D (mm)	199 x 990 x 655
OUTDOOR UNIT		700 x 900 x 350

WEIGHTS

INDOOR UNIT	GROSS / NET (kg)	39 / 30
OUTDOOR UNIT		49 / 61

ADDITIONAL REFRIGERANT CHARGE

PIPE LENGTH		5 m	10 m	15 m	20 m
FULL CHARGE AMOUNT	ABY14EGA-W	1,100 g			

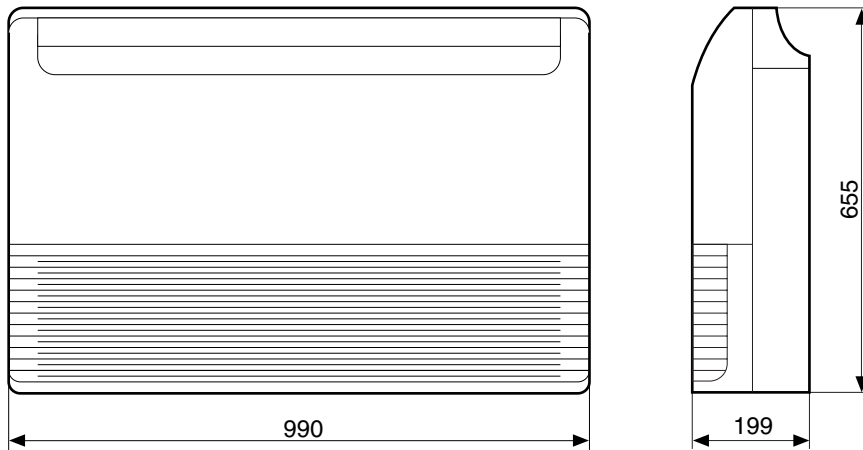
Note : - This is a chargeless air conditioner.

- In the case that 5 m are exceeded, when using a connection pipe other than that in the table, charge additional refrigerant with 30 g (1.1 oz.)/1 m (3.3 ft.) as the criteria.

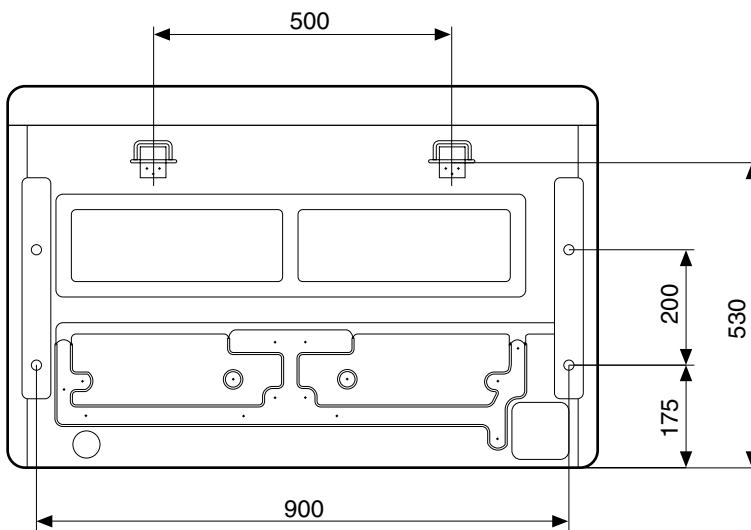
OUTLINE AND DIMENSIONS

INDOOR UNIT

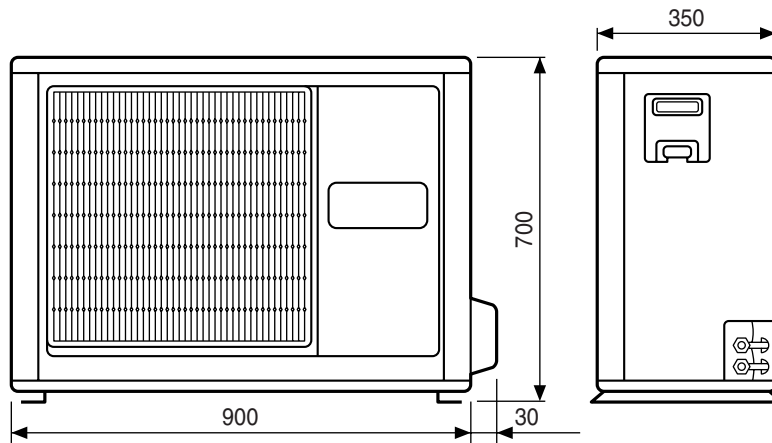
(Unit : mm)



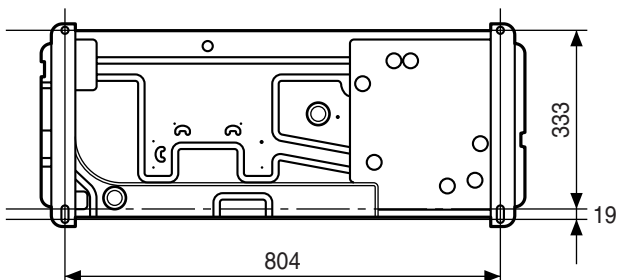
[Rear View]



OUTDOOR UNIT

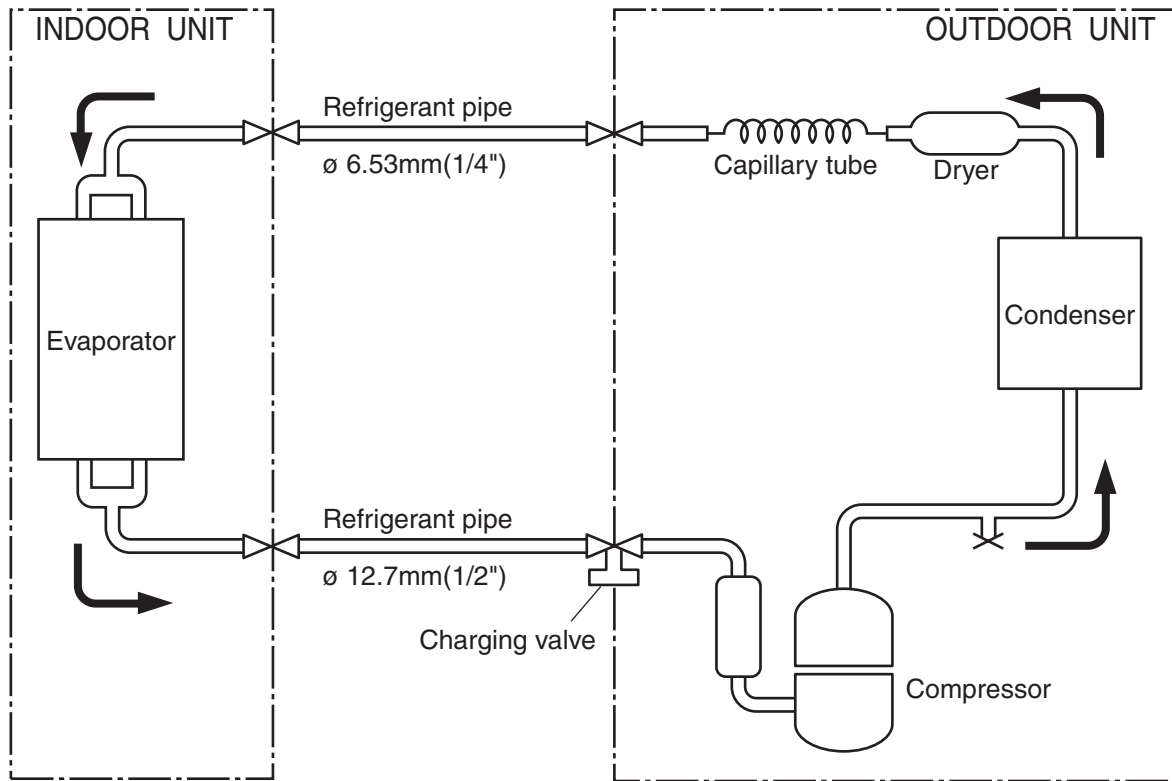


[Bottom View]



REFRIGERANT SYSTEM DIAGRAM

Models : ABY14EGA-W / AOY14EMB

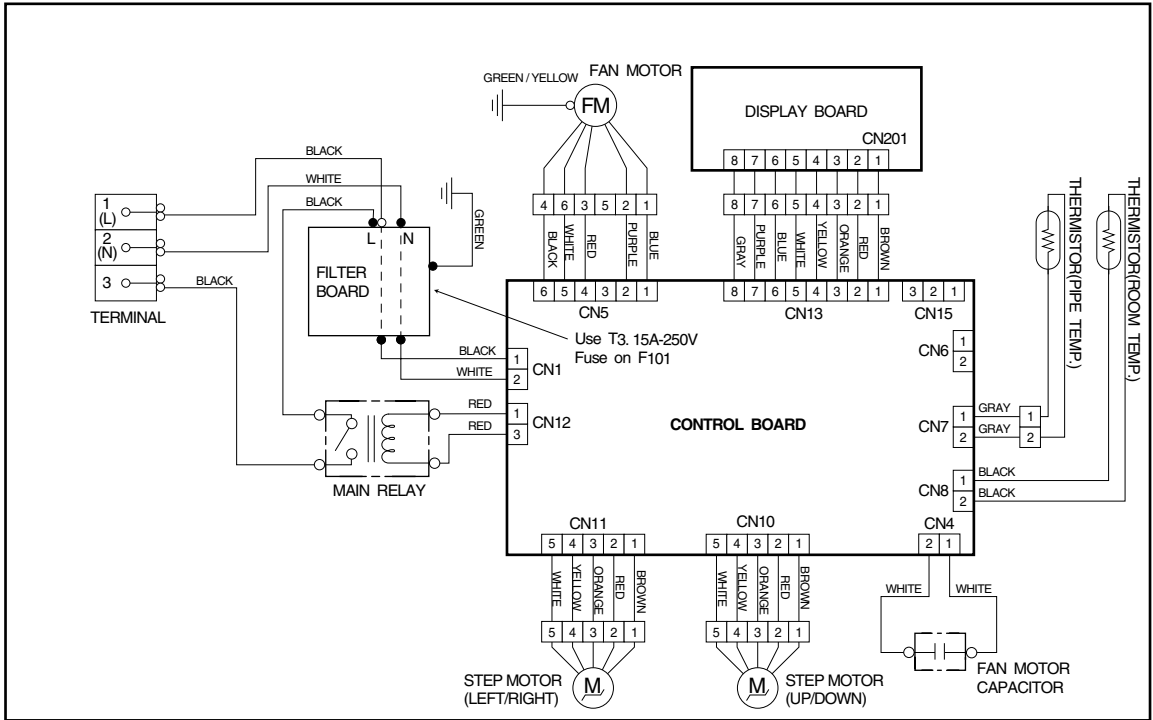


→ Cooling

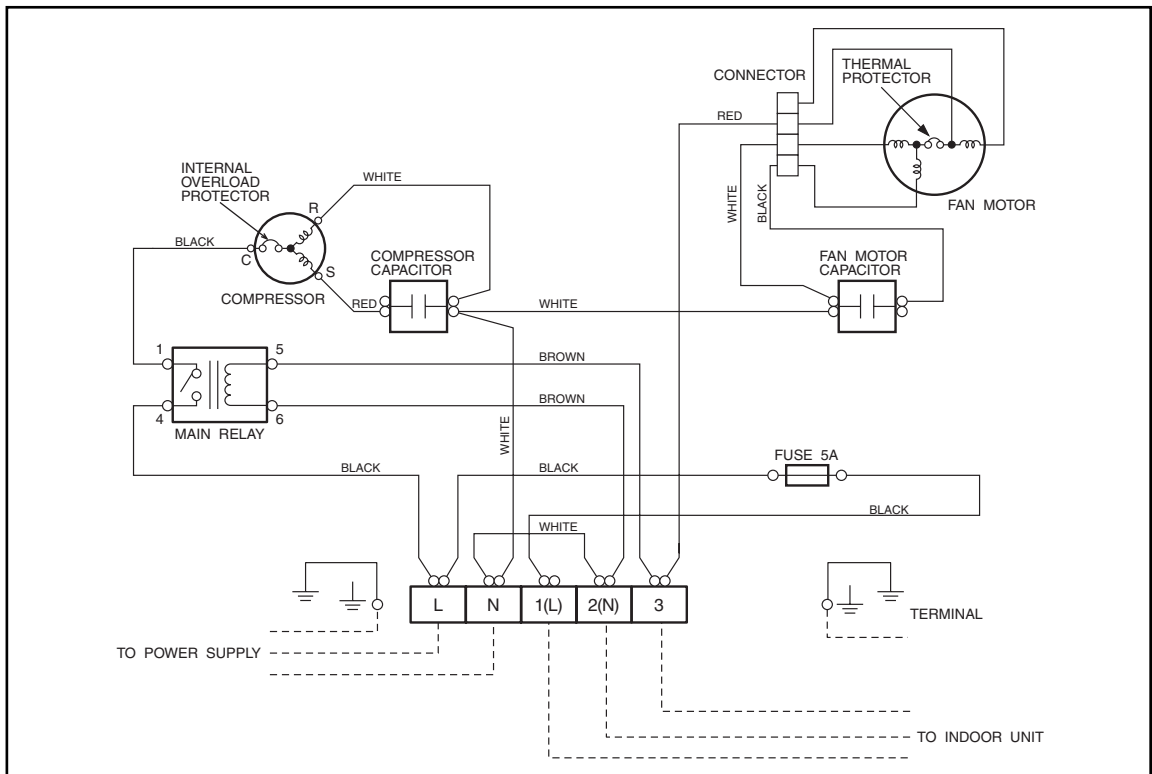
⊗ : Flare coupling

CIRCUIT DIAGRAM

Model : ABY14EGA-W

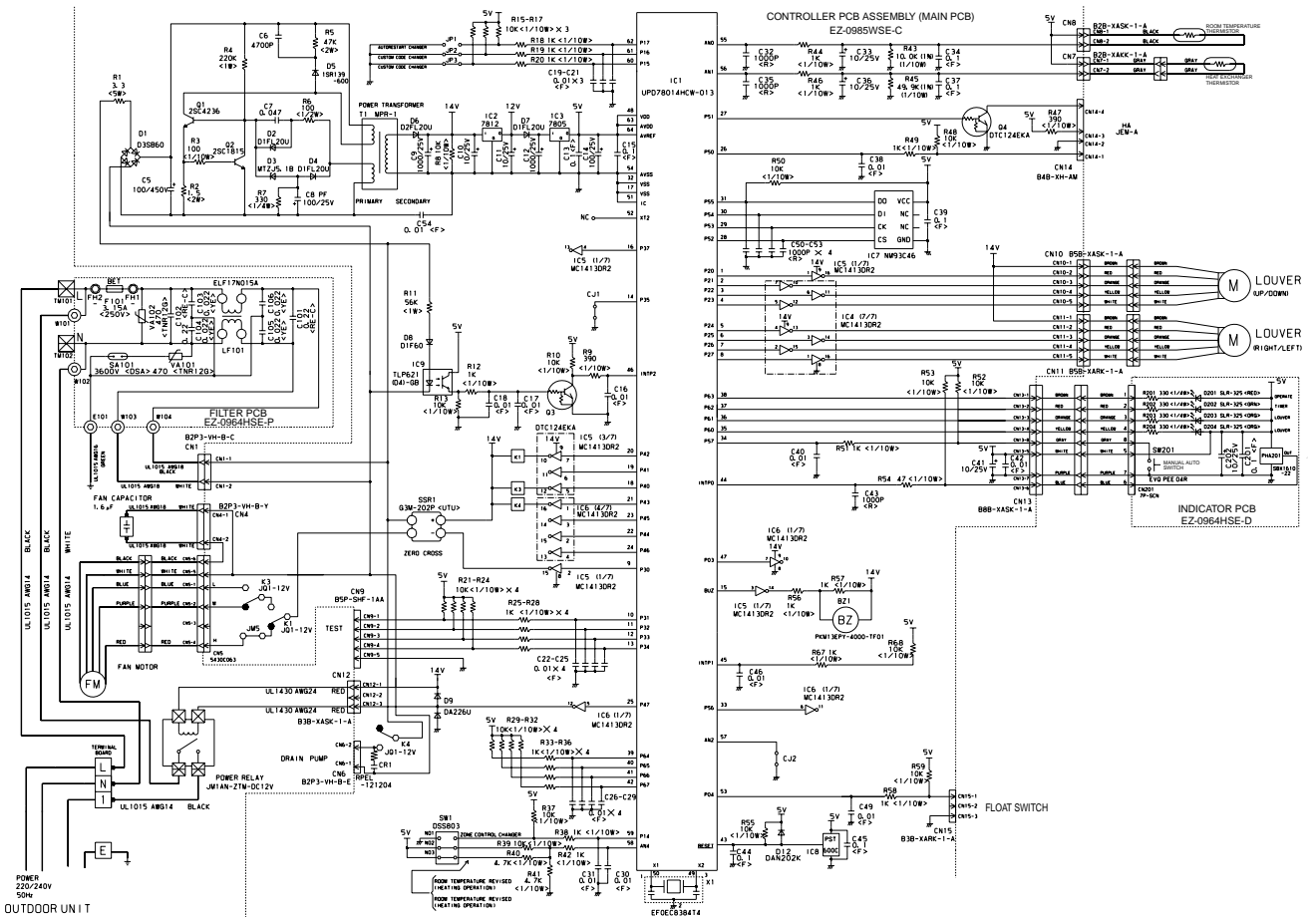


Model : AOY14EMB



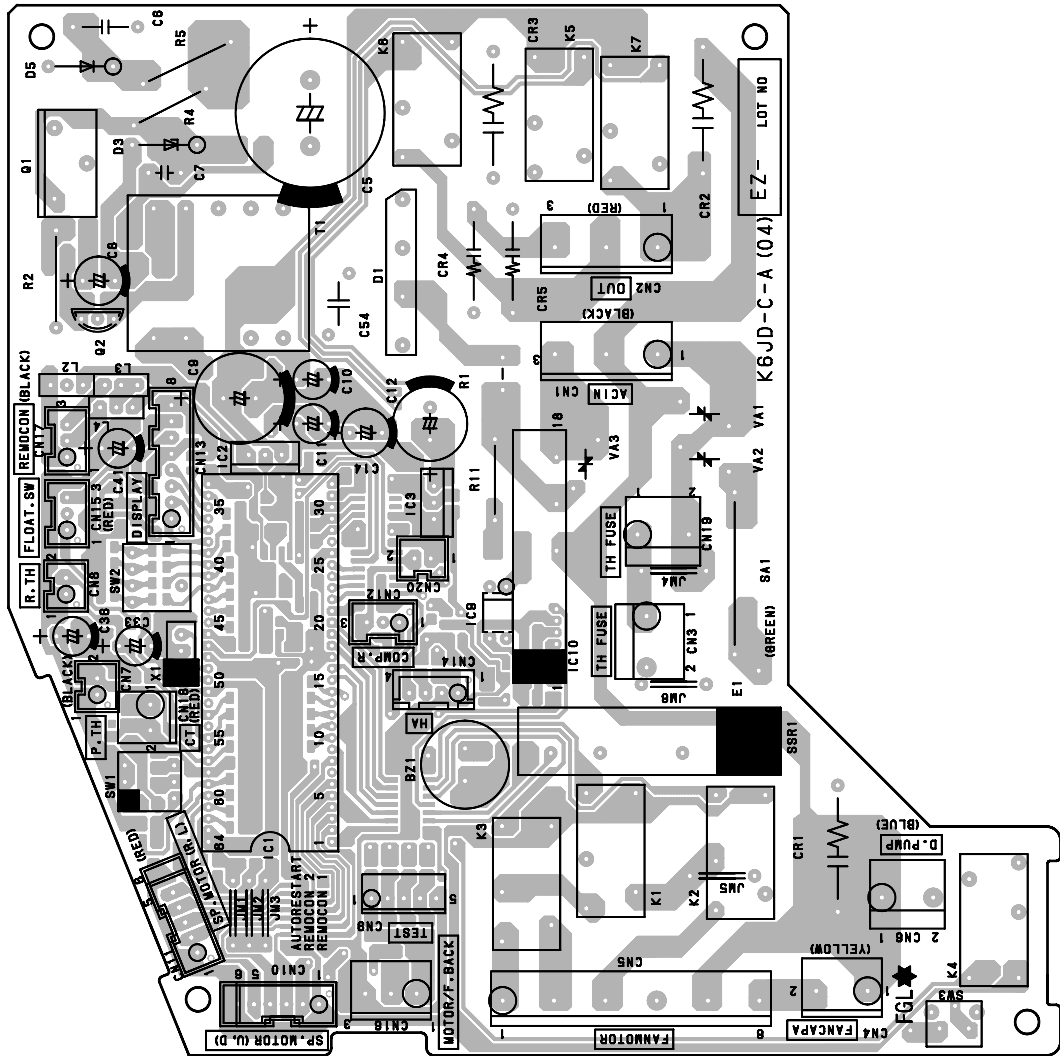
INDOOR PRINTED CIRCUIT BOARD CIRCUIT DIAGRAM

Model : ABY14EGA-W

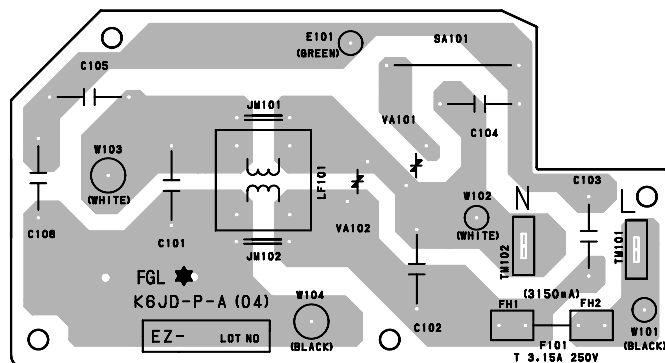


P.C. BOARD LAYOUTS

CONTROLLER PCB ASSEMBLY (MAIN PCB)
(Viewed from the component side)

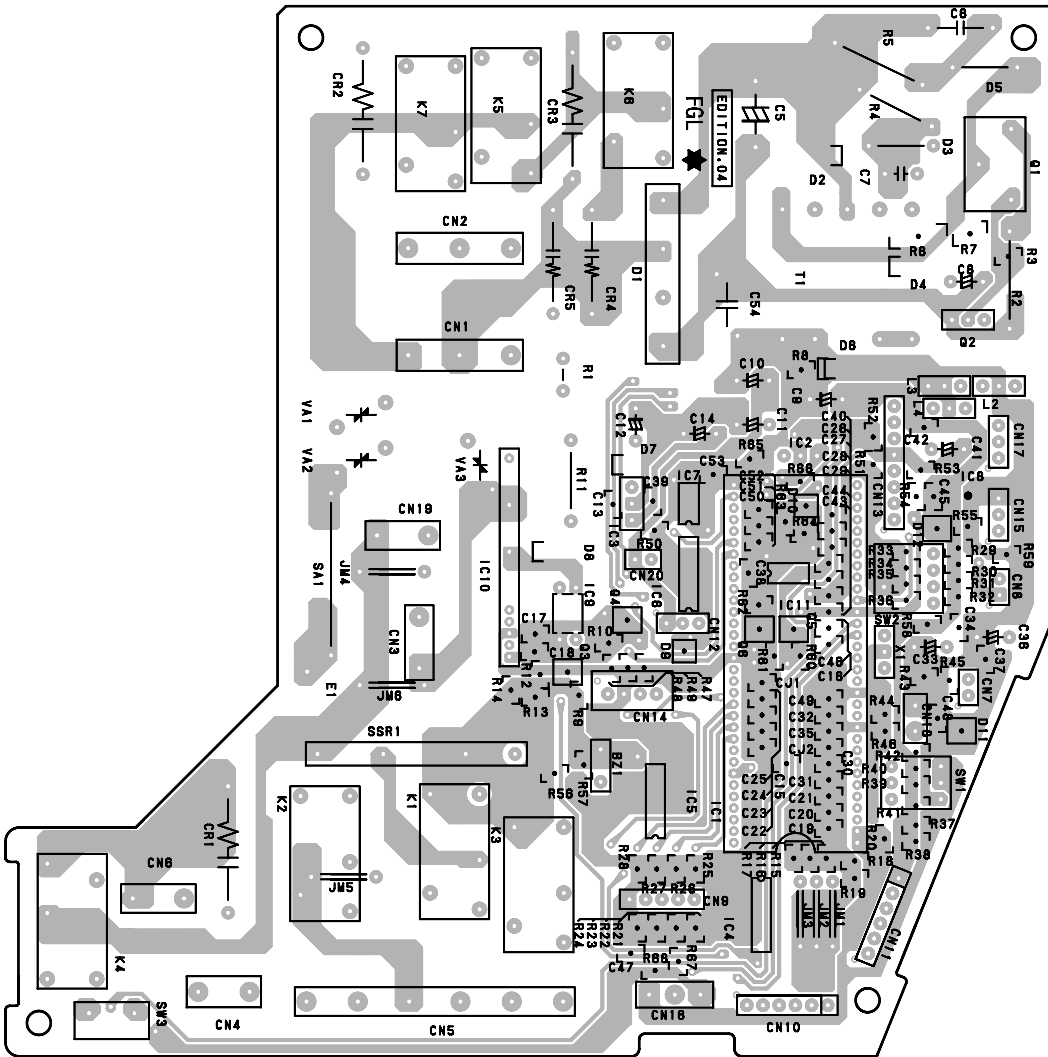


FILTER PCB ASSEMBLY
(Viewed from the component side)



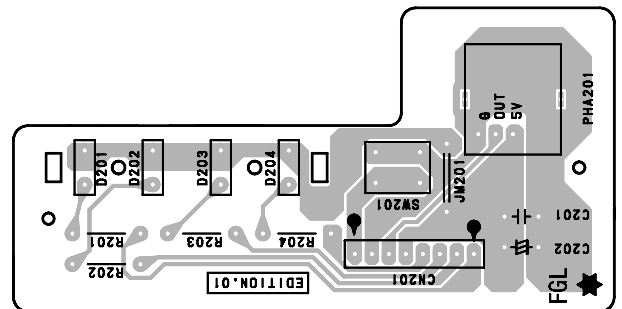
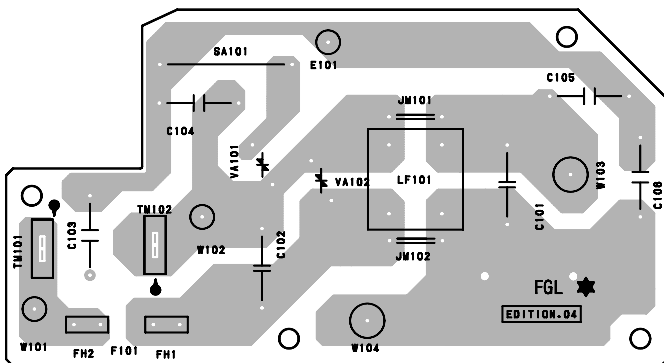
CONTROLLER PCB ASSEMBLY (MAIN PCB)

(Viewed from the solder side)



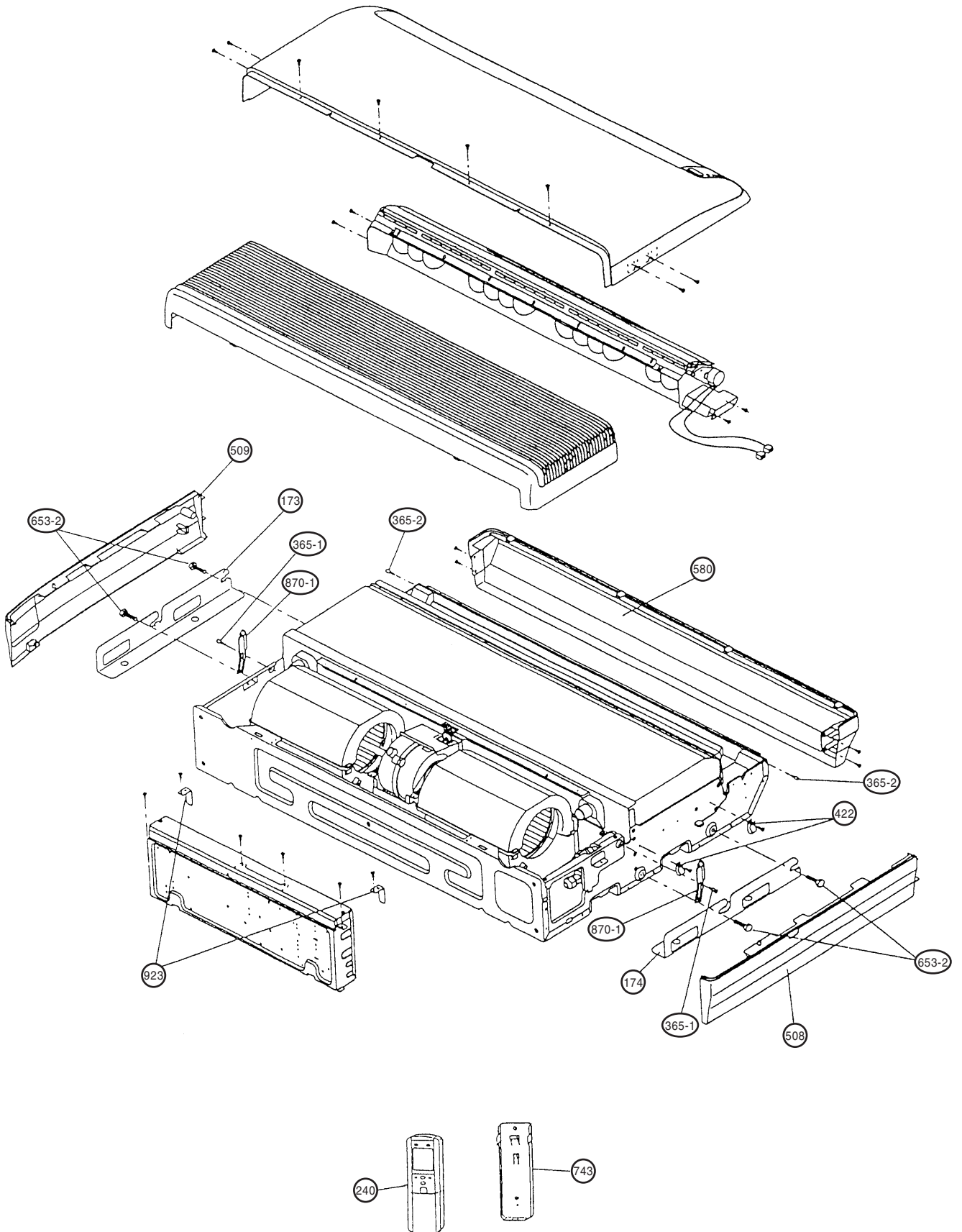
FILTER PCB ASSEMBLY
(Viewed from the solder side)

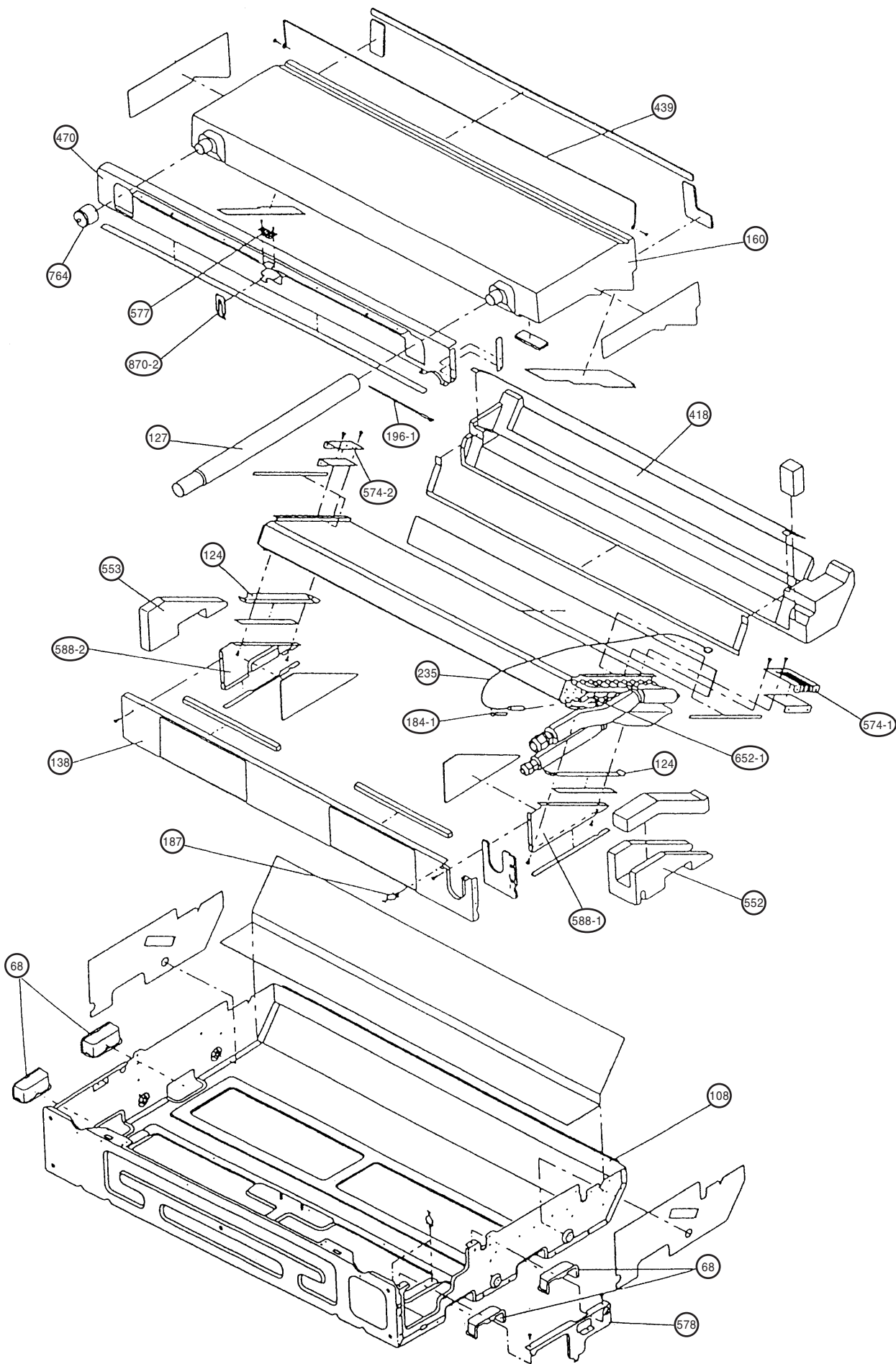
INDICATOR PCB ASSEMBLY
(Viewed from the solder side)

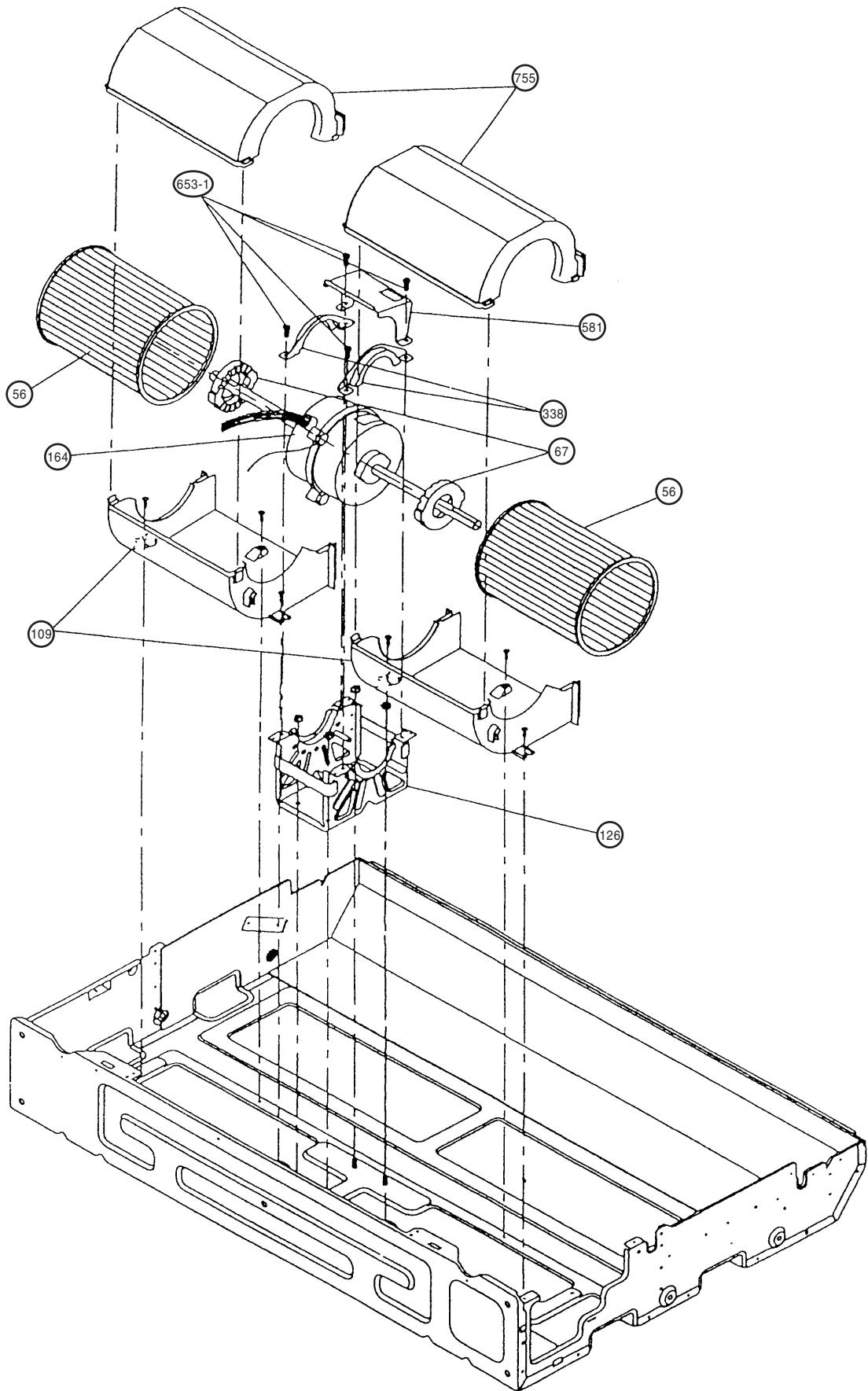


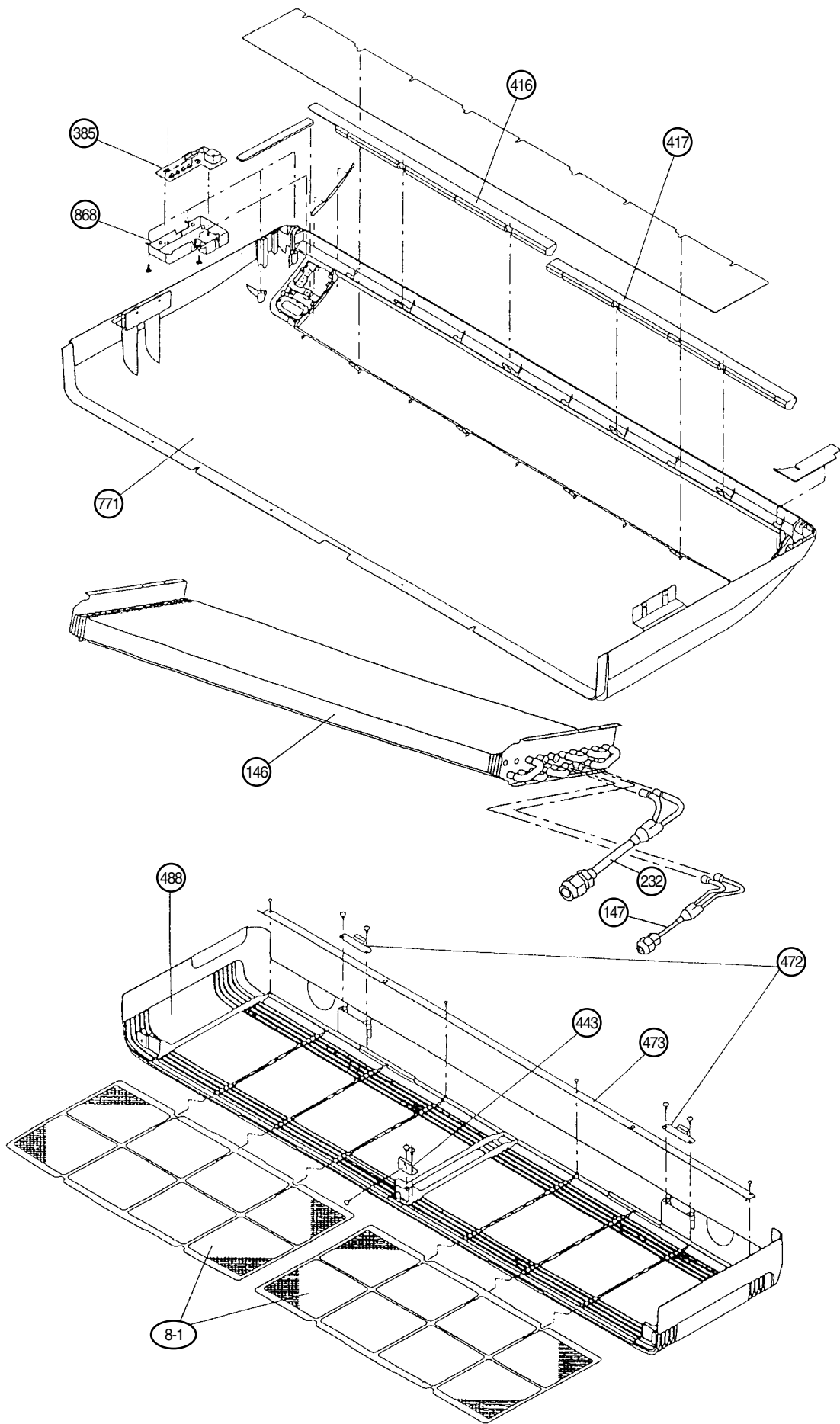
DISASSEMBLY ILLUSTRATION

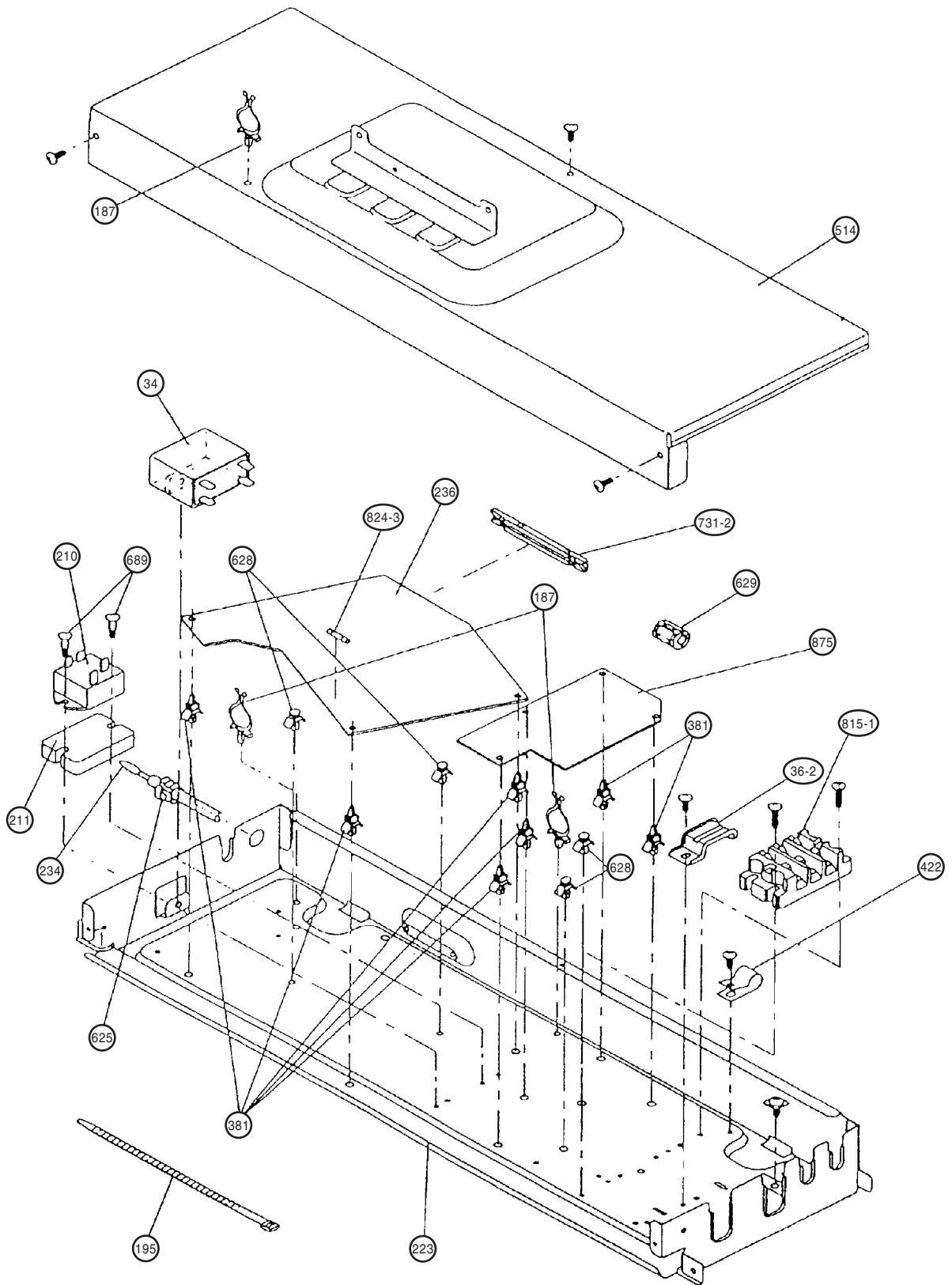
Model : ABY14EGA-W

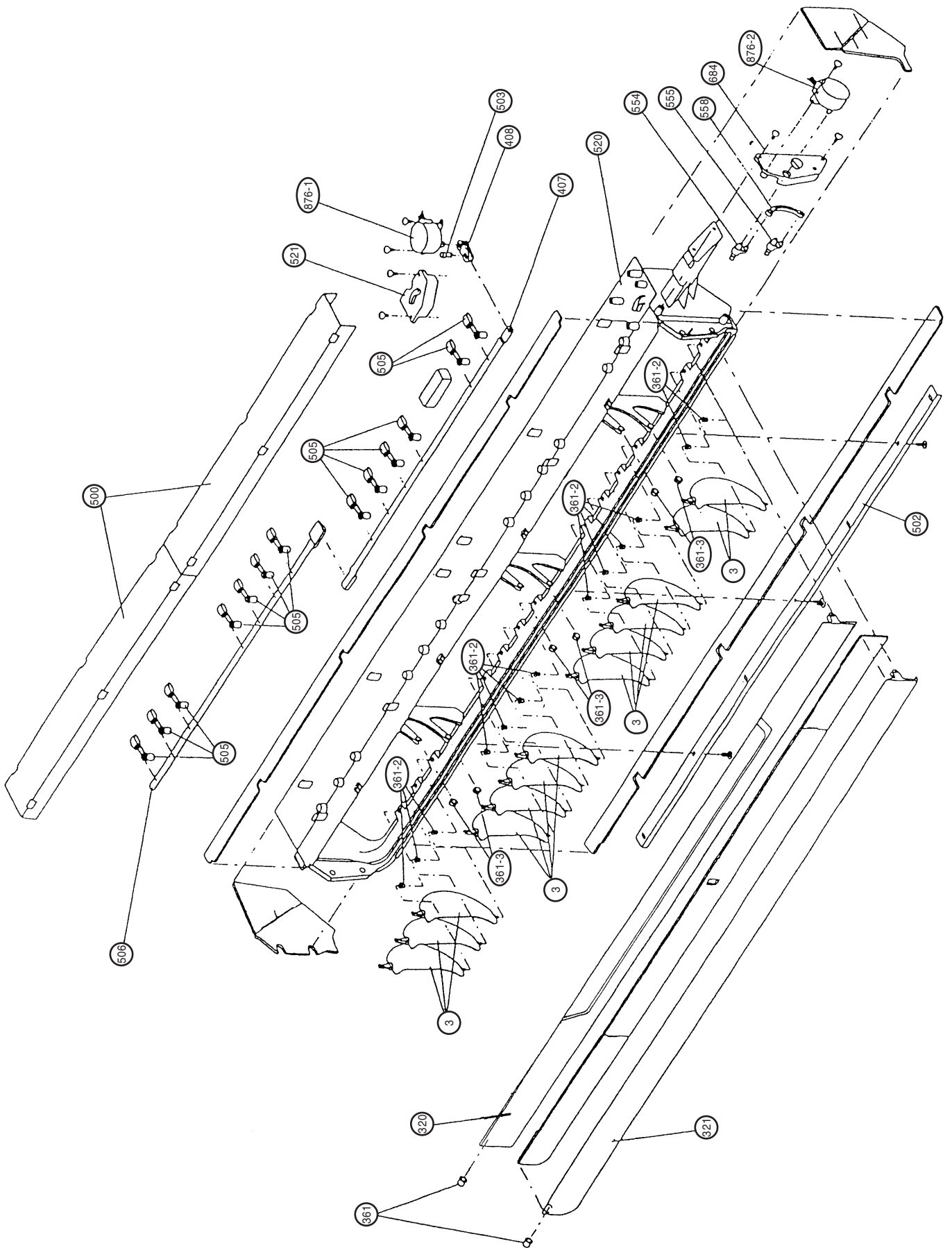




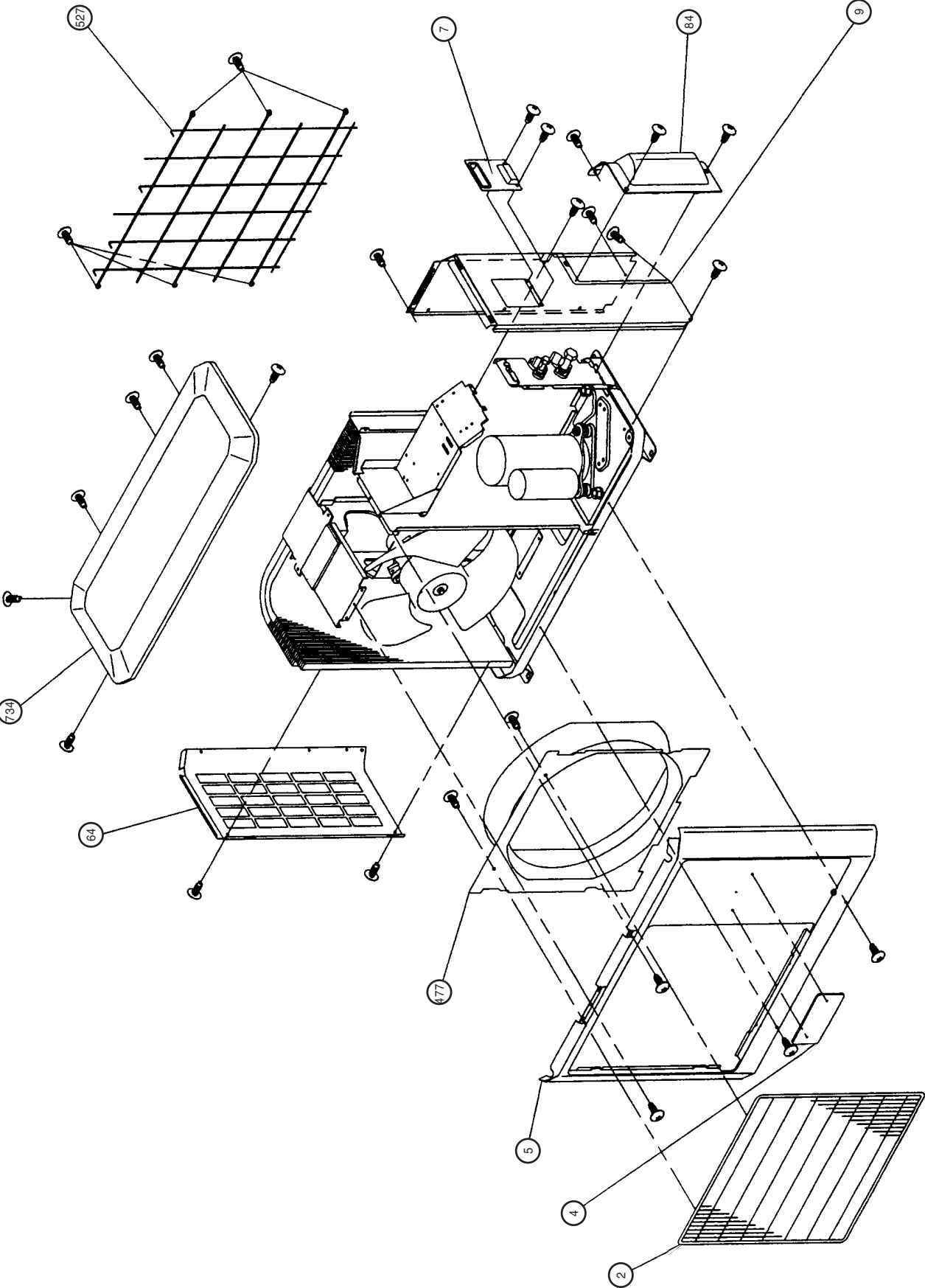


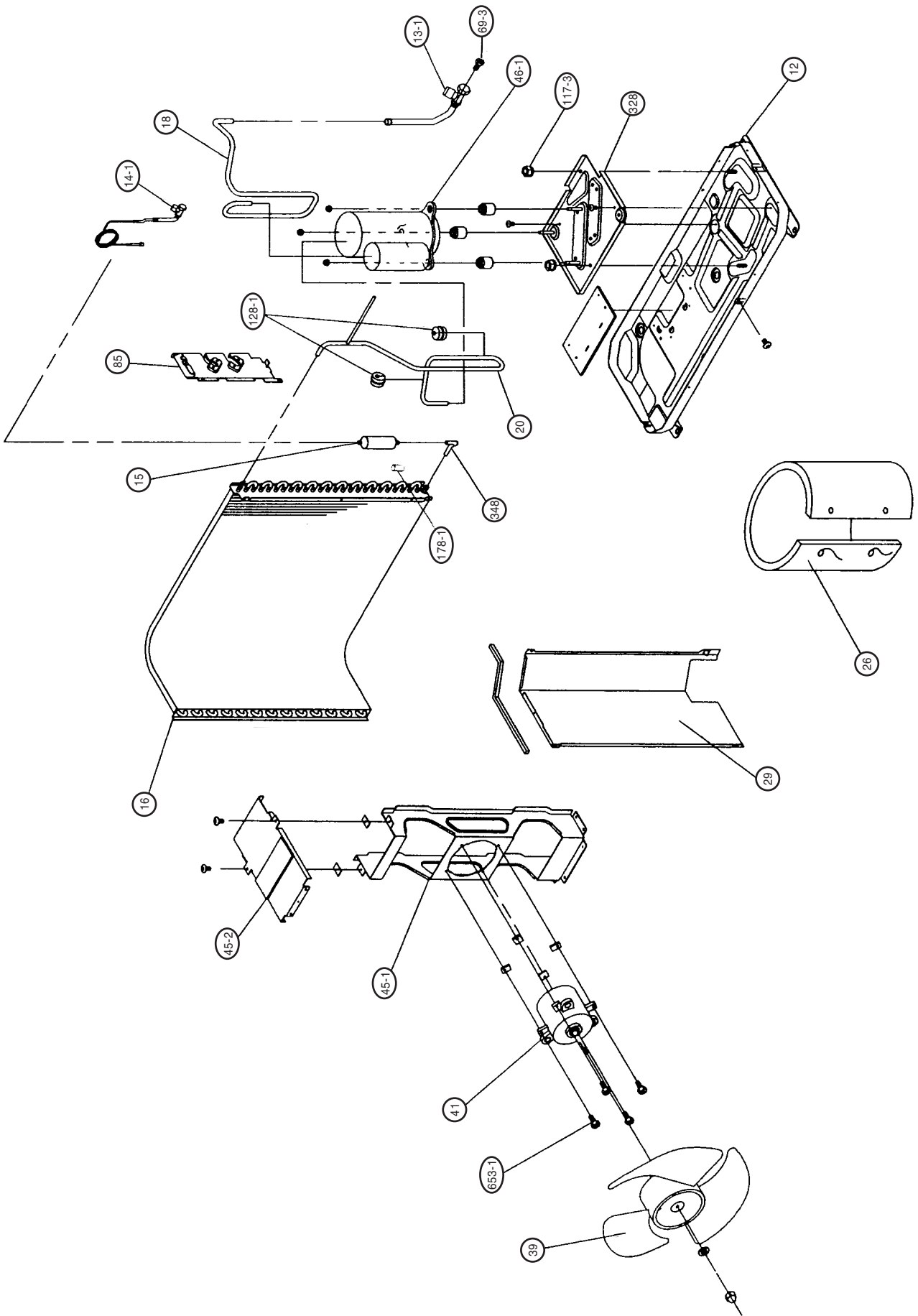


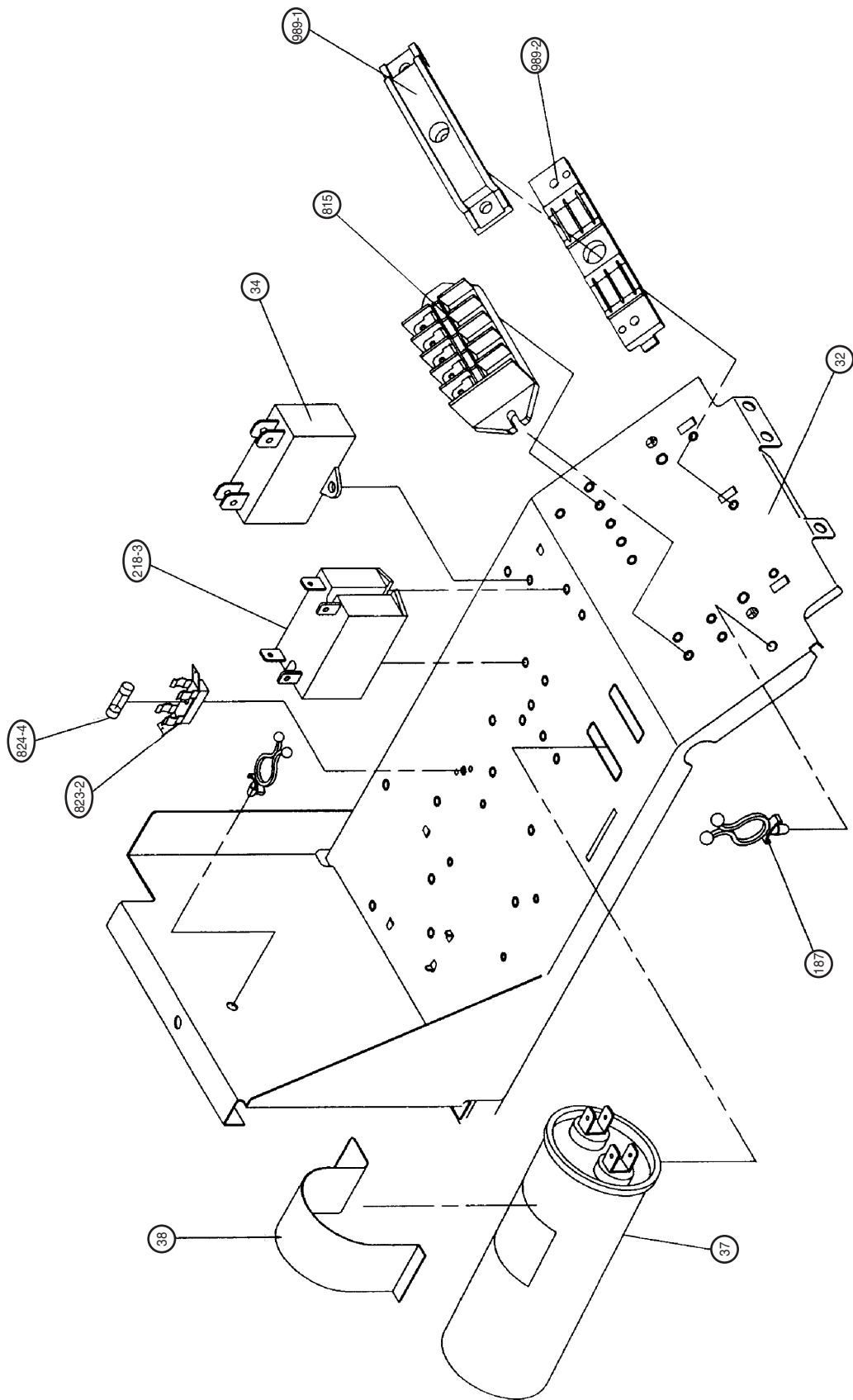


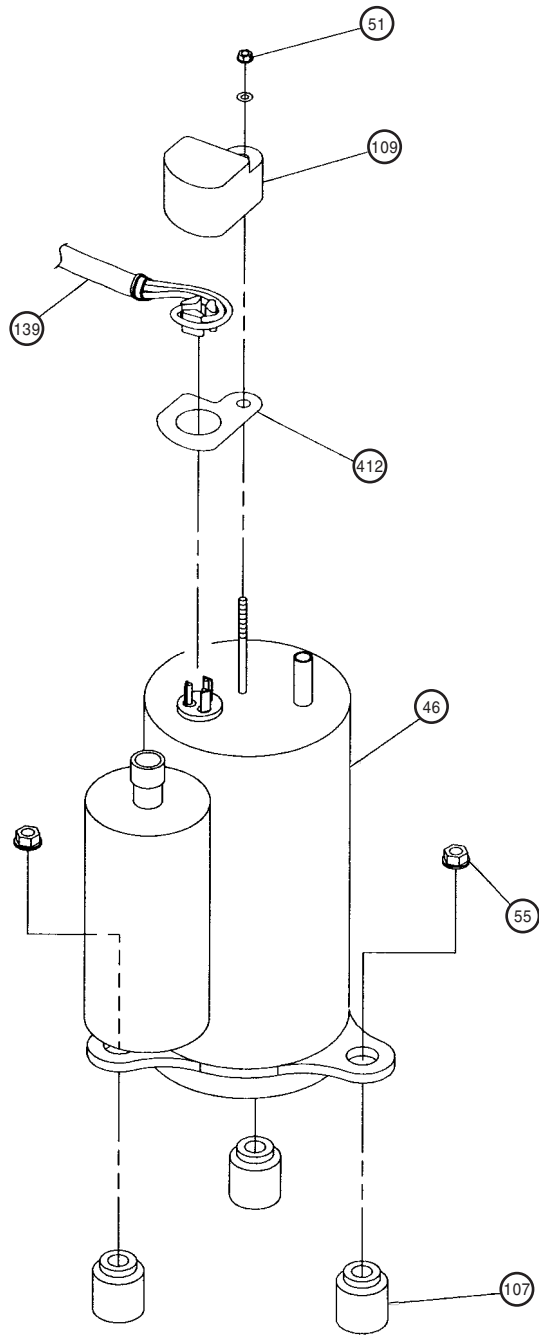


Model : AOY14EMB









PARTS LIST

When you order parts, please make a photocopy of this page and fill the number of the parts in the "Order" column.

INDOOR UNIT

Ref. No.	Description	Part No.	Ord. Q'ty	Ref. No.	Description	Part No.	Ord. Q'ty
3	Louver	9358561010		470	Separate Wall-B	9358585009	
8-1	Air Filter	9358567012		472	Grille Support	9358602003	
34	Capacitor (Fan Motor)	9700468080		473	Filter Bracket	9358607008	
36-2	Cord Holder Metal	9356362008		488	Grille-F	9358532010	
56	Sirocco Fan Assy	9358621004		500	Protect Cover	9358564004	
67	Rubber (Vibration-proof)	313659068604		502	Support Stay	9358599006	
68	Cap. Plastic	9358563007		503	Louver Shaft	9358557006	
108	Base Assy	9359061014		505	Louver Stopper	9358555002	
109	Casing, Plastic	9358543009		506	Louver Rod	9358559000	
124	Dew Proof Plate	9359196006		508	Cosmetic Panel-R	9358535011	
126	Motor Fixing Table Assy	9358591000		509	Cosmetic Panel-L	9358536018	
127	Drain Hose Assy	9359242000		514	Control Box Cover	9359097006	
138	Separate Wall-A	9358584002		520	Flap Base	9358537015	
146	Evaporator Assy G966E	9365655009		521	Louver Link Cover	9358558003	
147	Inlet Pipe (Eva.) Assy, Welded	9365630006		552	Insulation (Evaporator)-R	9358575000	
160	Drain Pan Assy	9358568002		553	Insulation (Evaporator)-L	9358857007	
164	Fan Motor Assy-In MFA-14CTT	9600778012		554	Flap Link-Upper (Step Motor-V)	9358551004	
173	Hanger Bracket-L	9358596005		555	Flap Link-Lower (Step Motor-V)	9358552001	
174	Hanger Bracket-R	9358595008		558	Motor Rod-A (Step Motor-V)	9358550007	
184-1	Thermistor Spring-A	313728262708		574-1	Evaporator Fixture-R (Bracket)	9358589007	
187	Clamp No. 1219	313361271706		574-2	Evaporator Fixture-L (Bracket)	9358590003	
195	Clamp SKB-100	313361275805		577	Catch TL-119	9359096009	
196-1	Clamp SKB-3M	312300787605		578	Base Bracket (Reinforcement Metal)	9358586006	
210	Main Relay JM1AN-ZTM-DC12V	9356781007		580	Top Cover	9358534014	
211	Cushion Rubber	313806328306		581	Protect, Metal (Fan Motor)	9359282006	
223	Control Box	9358600016		588-1	Evaporator Bracket-R	9358587003	
232	Outlet Pipe (Evaporator) Assy	9365629000		588-2	Evaporator Bracket-L	9358588000	
234	Thermistor Assy-Room	9703299025		625	Cord Bushing KR-51	9359240006	
235	Thermistor Assy-Pipe	9701102068		628	Locking Spacer-B	313005446558	
236	Controller PCB Assy EZ-096VWSE-C	9701941094		629	EMI Filter	0400197119	
240	Remote Control Unit AR-DL2	9359913023		652-1	Thermostat Holder Pipe	313806262805	
320	Flap (Upper)-F	9358538012		653-1	Bolt (Fan Motor Fixing)	0700156014	
321	Flap (Lower)	9358541012		653-2	Bolt	0700190018	
338	Motor Fixture	9358594001		684	Motor Base	9358562000	
361	Bushing	9357942001		689	Screw, Grip Tapping NS+4016 ZNY w/Grip	9357837000	
361-2	Bushing-B, Plastic	9358554005		731-2	Holder (Guide Rail)	0600241018	
361-3	Bushing-C, Plastic	9358553008		743	Remote Control Unit Holder	9359955016	
365-1	Special Screw	9359092001		755	Casing Cover	9358544006	
365-2	Special Screw	9359091004		764	Drain Cap	9358746004	
381	Locking Spacer , KGLS-4S	313209391506		771	Panel Assy "FUJITSU"	9359076018	
385	Indicator PCB Assy EZ-0964HSE-D	9701873012		815-1	Terminal-3P	9356488005	
407	Motor Rod	9358560006		824-3	Fuse BET3.15A-250V	0600222512	
408	Louver Link	9358556009		868	PCB Holder	9358547007	
416	Insulation (Panel)-A	9358574003		870-1	Arm	9358565001	
417	Insulation (Panel)-B	9358914007		870-2	Center Arm	9359280002	
418	Insulation (Flap Base)	9358572009		875	Filter PCB Assy EZ-0964HSE-P	9702081010	
422	Clamp NK-10N	9359183006		876-1	Step Motor-H	9359106012	
439	Drain Pan Wire	9358598009		876-2	Step Motor-V	9359105015	
443	Arm Bracket	9359281009		923	Control Box Bracket	9358717004	

OUTDOOR UNIT

When you order parts, please make a photocopy of this page and fill the number of the parts in the "Order" column.

Ref. No.	Description	Part No.	Ord. Q'ty	Ref. No.	Description	Part No.	Ord. Q'ty
2	Fan Cover	9359808015		64	Cabinet-Left, Painted	9359840046	
4	Emblem-Rear "FUJITSU"	9359836018		69-3	Bolt, Hexagon Socket	301210060360	
5	Cabinet-A, Painted	9359797043		84	Valve Cover	9361325012	
7	Connector Cover (Panel Top)	9358011010		85	Valve Fixing Plate	9361324015	
9	Cabinet-B, Painted	9361323025		107	Rubber Seat-A (For Comp.)	9358080009	
12	Base Assy, Painted	9359813019		109	Terminal Cover (For Comp.)	9358076002	
13-1	3-Way Valve (1/2)	9363245004		117-3	Hexagon Nut (Spring Lock Washer)	301721180114	
14-1	2-Way Valve (1/4)	9363247008		128-1	Rubber (Discha. Pipe) (Counter Weight)	313155086308	
15	Dryer	9362385008		139	Wire Assy (Comp.)-A	9364880006	
16	Condenser Assy	9362546003		178-1	Capillary Holder Rubber	313414274807	
18	Suction Pipe Assy	9364885001		187	Clamp No. 1219	313361271706	
20	Discharge Pipe Assy	9364882000		218-3	Power Relay	9353619006	
26	Compressor Cover-A	9364881003		328	Compressor Plate Assy	9363881011	
29	Separate Wall	9359805014		348	Outlet Pipe	9363880007	
32	Control Box Metal-A	9361409019		412	Terminal Paking (For Comp.)	9358077009	
34	Capacitor (Fan Motor)	9357965024		477	Bellmouth	9359809012	
37	Running Capacitor	9703107115		527	Protection Net (Condenser)	9359845010	
38	Capacitor Clamp Metal	313468061808		653-1	Bolt (Fan Motor Fixing)	0700156014	
39	Propeller Fan	9359837015		734	Cabinet Top Plate, Painted	9359799023	
41	Fan Motor Assy-Out	9600832059		815	Terminal-5P	9356497021	
45-1	Motor Bracket	9359802013		823-2	Fuse Holder	0500063024	
45-2	Motor Bracket-Top	9359803010		824-4	Fuse	0600222529	
46-1	Compressor Assy	9365003008		989-1	Cord Clamp-A	9359822011	
51	Special Nut M5 (For Comp.)	9358079003		989-2	Cord Clamp-B	9359823018	
55	Special Nut M8 (For Comp.)	9355091008					

[INDOOR UNIT]
CONTROLLER PCB ASSEMBLY (Ref. No.236)

Ref. No.	Description	Part No.	Ord. Q'ty	Ref. No.	Description	Part No.	Ord. Q'ty
IC1	IC uPD 78014HCW-013	9702426026		R45	Res. 1/10W 49.9kohm+-5%	0200279824	
IC2	IC NJM 7812FA	0100462104		R54	Res. 1/10W 47ohm+-5%	0200212425	
IC3	IC NJM 7805FA	0100462081		CJ1,2	Res. 0 ohm	0200212012	
IC4-6	IC uPA 2003GR	0100028041		C5	Cap, Elec. 450V 100mfd	0300256060	
IC7	IC NM 93C46M8-X	0101622026		C6	Cap, Plastic 4700pF	0300269091	
IC8	IC PST 600CMT	0101461120		C7	Cap, Plastic 50V 0.047mfd	0300169339	
IC9	IC TLP 621(D4)-GB	0000117074		C8	Cap, Elec. 25V 100mfd	0301197560	
Q1	Xstr 2SC4236	0000164047		C9	Cap, Elec. 25V 1000mfd	0301196495	
Q2	Xstr 2SC1740S	0000699235		C10,11,33,36,41	Cap, Elec. 25V 10mfd	0301192312	
Q3,4	Xstr DTC124EKA	0000936033		C12	Cap, Elec. 25V 1000mfd	0301158264	
D1	Diode D3SB60	0000689045		C13,15,34,37,39,44,45	Cap, Ceramic 50V 0.1mfd	0300311752	
D2,4,7	Diode D1FL20U	0000746519		C14	Cap, Elec. 25V 100mfd	0301192350	
D3	Diode MTZJ5.1B	0000852166		C16-31,38,40,42,46,49	Cap, Ceramic 50V 0.01mfd	0300311738	
D5	Diode 1SR139-600	0000353120		C32,35,43,50-53	Cap, Ceramic 50V 1000pF	0300308509	
D6	Diode D2FL20U	0000906500		C54	Cap, Ceramic 50V 0.01mfd	0300727539	
D8	Diode D1F60	0000208024		K1,3,4	Relay JQ1-12V	9701316014	
D9	Diode DA226U	0000625036		SSR1	Relay G3M-202P-UTU	9701829019	
D12	Diode DAN202K	0000684019		T1	Switching Transformer ETS28AS118AH	9702727017	
R1	Res.Cement 5W 3.3ohm+-5%	0200244372		X1	Ceramic Resonator EF0EC8384T4	9701261017	
R2	Res.Metal 2W 1.5ohm+-5%	0201107119		BZ1	Buzzer PKM13EPY-4000-TF01	9701298013	
R3	Res. 1/10W 100ohm+-5%	0200212500		CR1	Network RPEL-121204 -C	9701125012	
R4	Res.Carbon 1W 220kohm+-5%	0200111353		CN1	Plug, PCB B2P3-VH-B-C	0500011773	
R5	Res.Metal 2W 47kohm+-5%	0201107652		CN4	Plug, PCB B2P3-VH-B-Y	0500011827	
R6	Res. 1/2W 100ohm+-5%	0200731506		CN5	Plug, PCB 5430C063	0500957026	
R7	Res. 1/4W 330ohm+-5%	0200708621		CN6	Plug, PCB B2P3-VH-B-E	0500011759	
R8,10,13 15-17,21-24,29-32,37,39,48,50,52,53,55,59,68	Res. 1/10W 390ohm+-5%	0200212647		CN7	Plug, PCB B2B-XAKK-1-A	0501045227	
R9,47	Res.Metal 1W 56kohm+-5%	0201106662		CN8	Plug, PCB B2B-XASK-1-A	0501045012	
R11	Res. 1/10W 1kohm+-5%	0200212746		CN9	Plug, PCB B5P-SHF-1AA	0500006069	
R12,18-20,25-28,33-36,38,42,44,46,49,51,56-58,67	Res. 1/10W 4.7kohm+-5%	0200212906		CN10	Plug, PCB B5B-XASK-1-A	0501045043	
R40,41	Res. 1/10W 10kohm+-5%	0200279497		CN11	Plug, PCB B5B-XARK-1-A	0501045517	
R43	Res. 1/10W 10kohm+-5%	0200279497		CN12	Plug, PCB B3B-XASK-1-A	0501045029	
				CN13	Plug, PCB B8B-XASK-1-A	0501045074	
				CN14	Plug, PCB B4B-XH-AM	0500005314	
				CN15	Plug, PCB B3B-XARK-1-A	0501045319	
				JM2-6	Wire 0.6 dia. 10mm	9700025016	

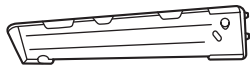
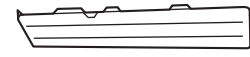

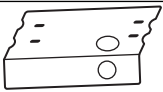
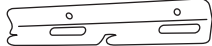












[INDOOR UNIT]
FILTER PCB ASSEMBLY (Ref. No.875)

Ref. No.	Description	Part No.	Ord. Q'ty	Ref. No.	Description	Part No.	Ord. Q'ty
C101,102	Cap, Plastic 0.22mfd	0300304099		TM101,102	Plug Contact 86028	0500536016	
C105,106	Cap, Plastic 0.022mfd	0301052098		LF101	EMI Filter ELF17N015A	0400197119	
SA101	Arrester DSA-362MA-05	0600168032		W101	Wire w/Terminal BLK L=80	9702066017	
VA101,102	Varistor TNR12G471K	0000038010		W102	Wire w/Terminal WHT L=100	9702066024	
F101	Fuse BET3.15A-250V	0600222512		W103,104	Wire #18 2P	9702067014	
FH1,2	Fuse Holder PFC5000-0502	0500158072		E101	Wire w/Terminal GRN L=120	9702066062	

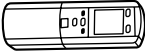



[INDOOR UNIT]
INDICATOR PCB ASSEMBLY (Ref. No.385)

Ref. No.	Description	Part No.	Ord. Q'ty	Ref. No.	Description	Part No.	Ord. Q'ty
D201	Diode SLR-325VC RED	0000813259		PHA201	Remote Control Amplifier SBX1810-22	0101525129	
D202	Diode SLR-325MC GRN	0000813242		SW201	Push Switch EVQ-PAG-04K	9700450016	
D203,204	Diode SLR-325DC ORG	0000813235		JM201	Wire 0.6 dia. 10mm	9700025016	
C201	Cap, Ceramic 0.1mfd	0300988251			Lamp Holder 94N40	9358548004	
C202	Cap, Elec. 25V 10mfd	0300004258					
R201-204	Res.Carbon 1/4W 330ohm+-5%	0201038659					


INDOOR UNIT ACCESSORIES

Name and Shape	Application	Part No.
Cosmetic Panel-L 		9358536018
Cosmetic Panel-R 		9358535011
Tapping screw (ϕ 4 x 10) 		301171164104
Installation template 	For positioning the indoor unit For under ceiling type.	9359107002
Hanger bracket-L 	For suspending the indoor unit from ceiling	9358596005
Hanger bracket-R 		9358595008
Anchor bolt (M12) 		} 313806339400
Special nut 		
Spring washer 		
Wall bracket 		For suspending the indoor unit on the wall.
Tapping screw (ϕ 4 x 20) 	For fixing the wall bracket.	301141164200
Coupler heat insulator 	For indoor side pipe joint	9350716012
Nylon fastener (large) 	For fixing the coupler heat insulator	313152375801
Nylon fastener (small) 	For fixing the drain hose	312300787605
Drain hose 		9359242000
Insulation (Drain hose) 	Adhesive type 70 x 230	9359225003
VT wire 	For fixing the drain hose L 280mm	313806350303

REMOTE CONTROL UNIT

Name and Shape	Application	Part No.
Remote control unit 	Use for air conditioner operation	9359913023 (AR-DL2)
Battery (penlight) 	For remote control unit	0600185534
Remote control unit holder 	For mounting the remote control unit	9359955016
Tapping screws (φ 3 x 12) 	For remote control unit holder installation	301141533125

OUTDOOR UNIT ACCESSORY

Name and Shape	Application	Part No.
Hexagon wrench 	For air purge	9351228019