

**SPLIT TYPE
ROOM AIR CONDITIONER
WALL MOUNTED type**

SERVICE MANUAL

Models	Indoor unit	Outdoor unit
	ASY9RSLCW	AOY9RSLC
	ASY12RSLCW	AOY12RSLC

C O N T E N T S

SPECIFICATIONS	1
REFRIGERANT SYSTEM DIAGRAM	2
CIRCUIT DIAGRAM	3
INDOOR PRINTED CIRCUIT BOARD CIRCUIT DIAGRAM ..	4
INDOOR P.C. BOARD LAYOUTS	5
DISASSEMBLY ILLUSTRATION	7
PARTS LIST	11

S P E C I F I C A T I O N S

TYPE		COOL & HEAT	COOL & HEAT
INDOOR UNIT		ASY9RSLCW	ASY12RSLCW
OUTDOOR UNIT		AOY9RSLC	AOY12RSLC
COOLING CAPACITY	(kW)	2.70 - 2.75	3.40 - 3.45
HEATING CAPACITY	(kW)	3.30 - 3.35	3.95 - 4.05

ELECTRICAL DATA

POWER SOURCE	(V)	220 - 240		
FREQUENCY	(Hz)	50		
RUNNING CURRENT	(A)	COOLING	4.6 - 4.5	5.8 - 5.9
		HEATING	4.2 - 4.1	5.8 - 5.9
INPUT WATTS	(kW)	COOLING	0.98 - 1.03	1.21 - 1.26
		HEATING	0.89 - 0.94	1.21 - 1.28
E.E.R.	(kW/kW)	COOLING	2.76 - 2.67	2.81 - 2.74
		HEATING	3.71 - 3.56	3.26 - 3.16
MOISTURE REMOVAL	(ℓ/hr)	1.3		1.8
AIR CIRCULATION-Hi	(m ³ /hr)	COOL 495 HEAT 510		COOL 510 HEAT 510

COMPRESSOR

TYPE	Hermetic type, Permanent split condenser, 2 pole, Single phase, Induction motor		
CODE	80697645B 220 - 240V 50Hz	80615945B 220 - 240V 50Hz	
REFRIGERANT	R-22 (g)	900	1,100

FAN MOTOR

POWER SOURCE	(V)	220 - 240	
INDOOR UNIT	HI-SPEED (r.p.m.)	COOL 1,300 HEAT 1,330	COOL 1,330 HEAT 1,330
	MED-SPEED (r.p.m.)	COOL 1,210 HEAT 1,180	COOL 1,260 HEAT 1,180
	LO-SPEED (r.p.m.)	COOL 1,140 HEAT 1,030	COOL 1,190 HEAT 1,030
	QUIET (r.p.m.)	COOL 1,070 HEAT 970	COOL 1,120 HEAT 970
OUTDOOR UNIT	(r.p.m.)	675 - 720	665 - 710

DIMENSIONS

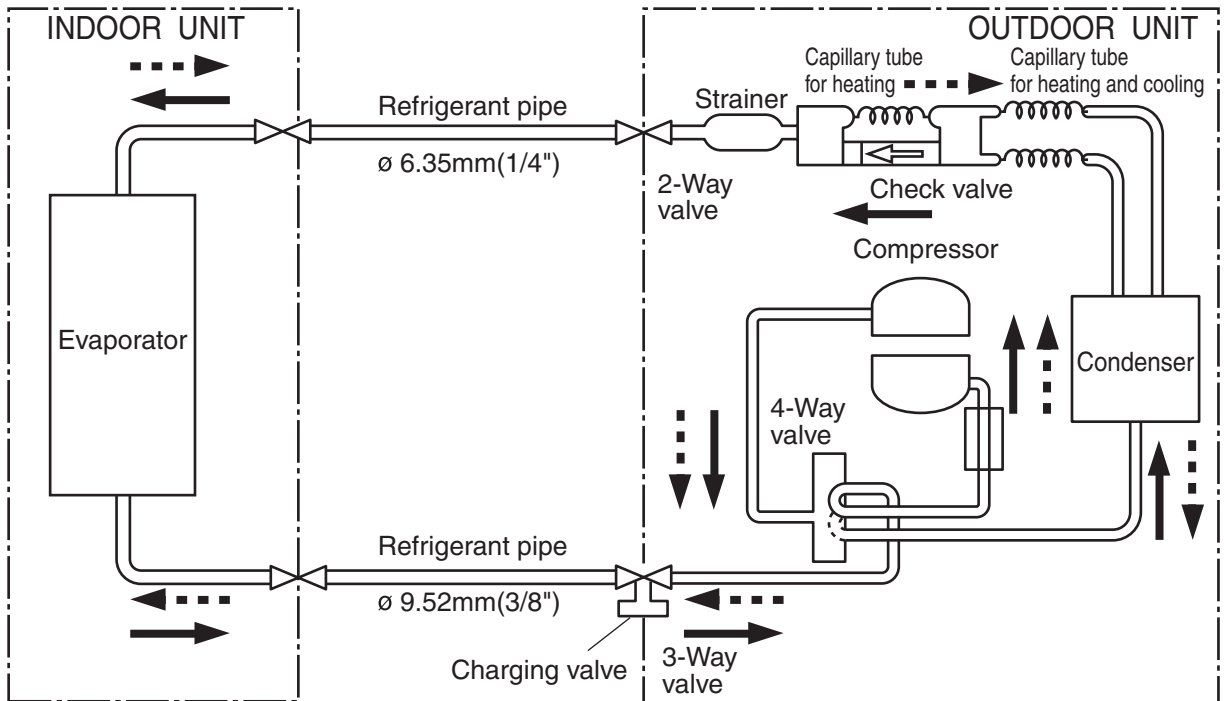
INDOOR UNIT	H x W x D (mm)	260 x 815 x 175	
OUTDOOR UNIT	H x W x D (mm)	535 x 695 x 250	

WEIGHT

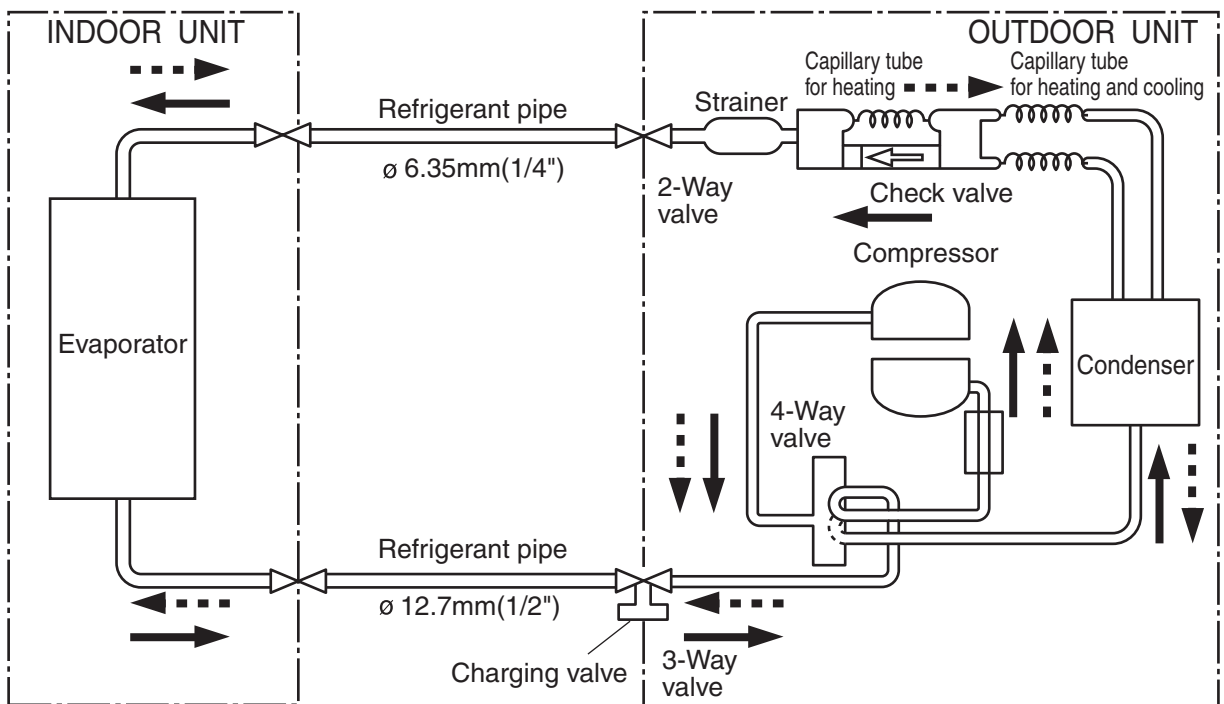
INDOOR UNIT	GROSS / NET (kg)	10 / 8	
OUTDOOR UNIT	GROSS / NET (kg)	33 / 30	37 / 34

REFRIGERANT SYSTEM DIAGRAM

Models : ASY9RSLCW / AOY9RSLC

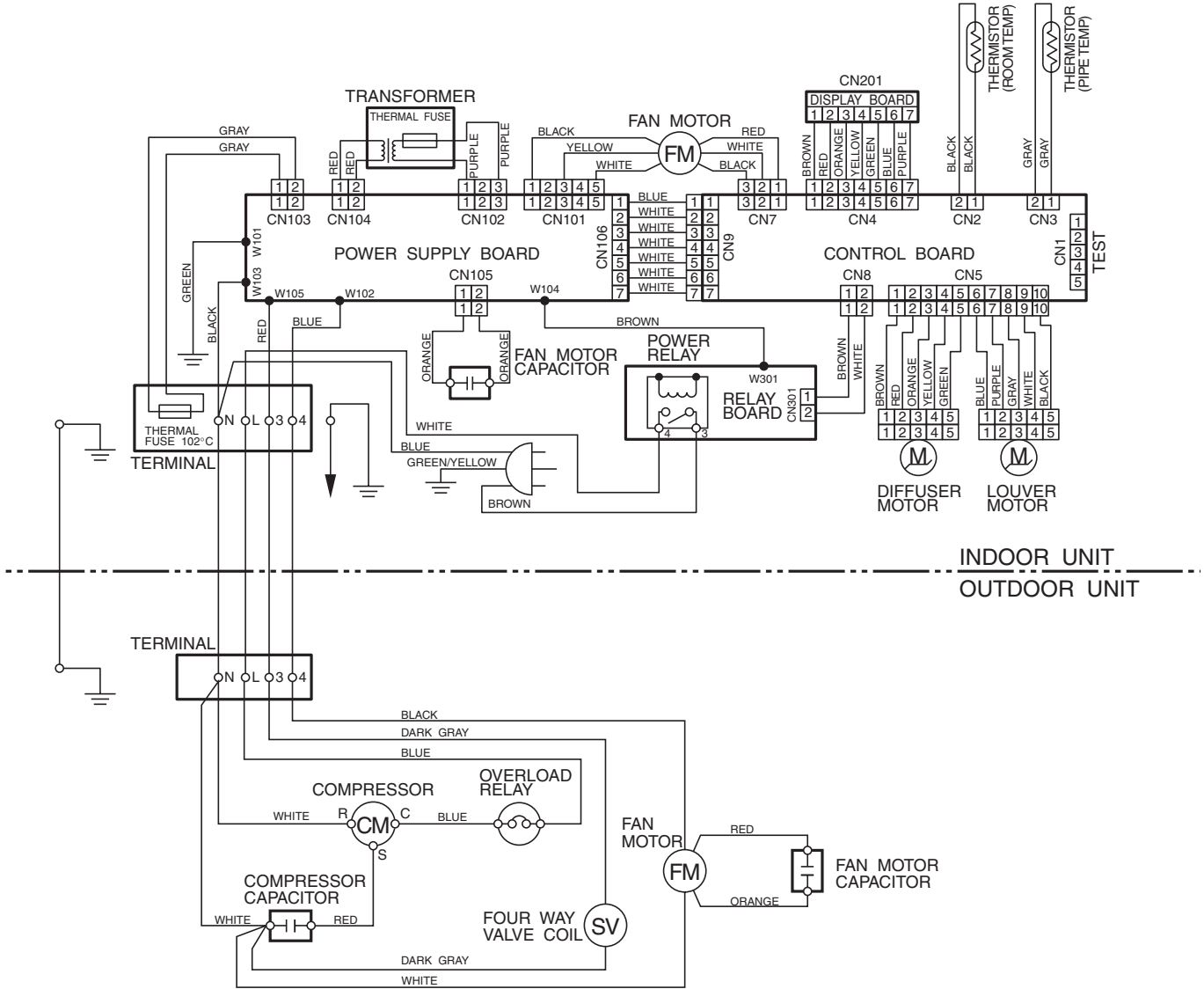


Models : ASY12RSLCW / AOY12RSLC



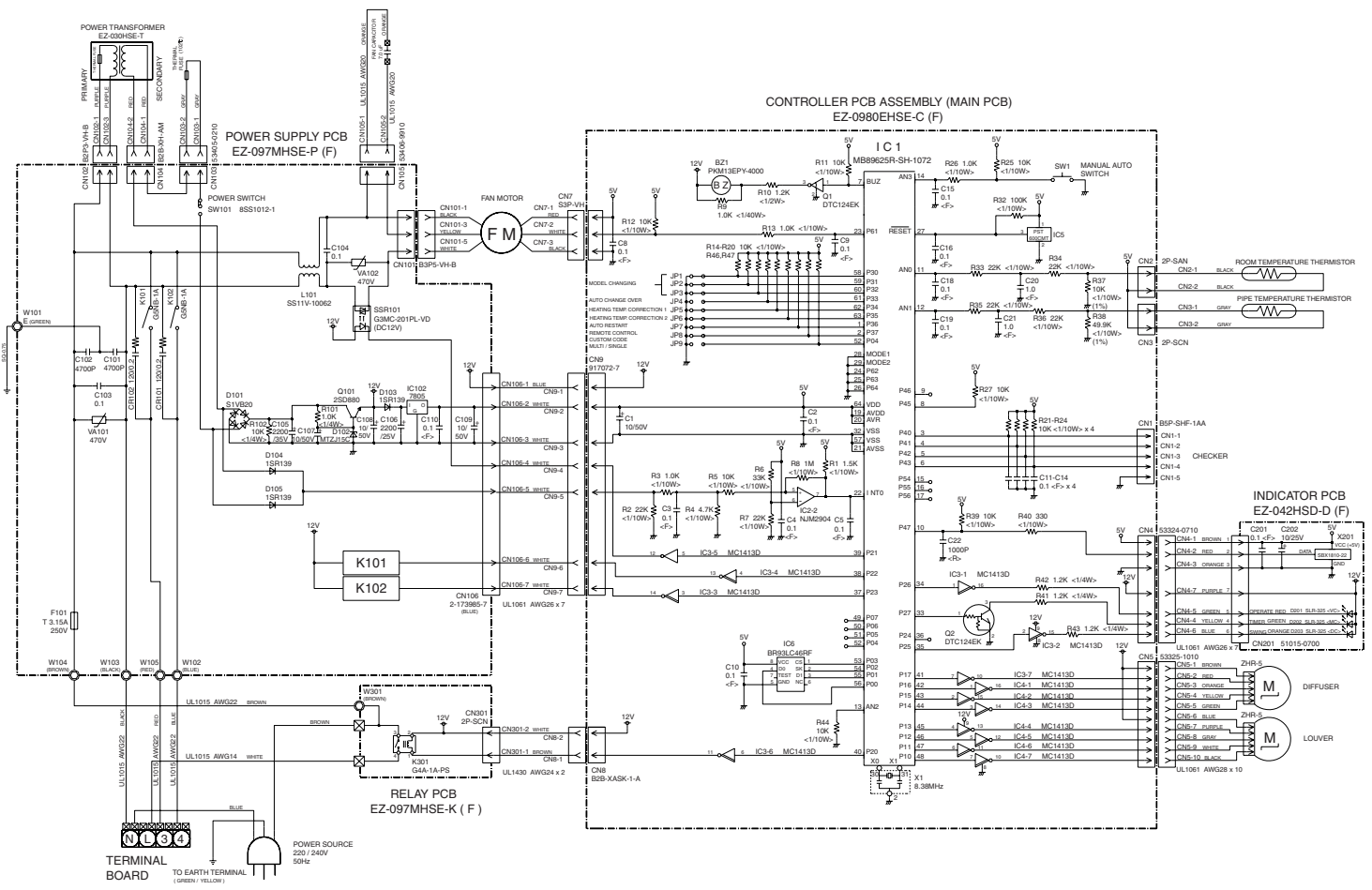
C I R C U I T D I A G R A M

**Models : ASY9RSLCW / AOY9RSLC
ASY12RSLCW / AOY12RSLC**



INDOOR PRINTED CIRCUIT BOARD CIRCUIT DIAGRAM

Models : ASY9RSLCW, ASY12RSLCW

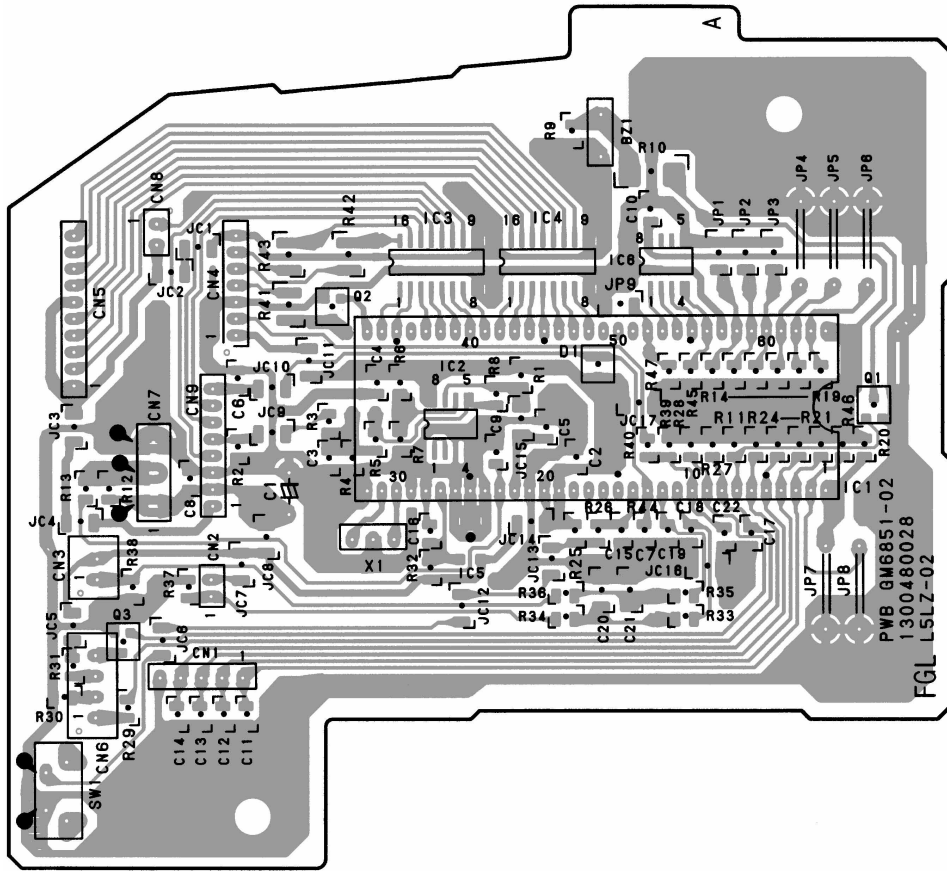


INDOOR P.C. BOARD LAYOUTS

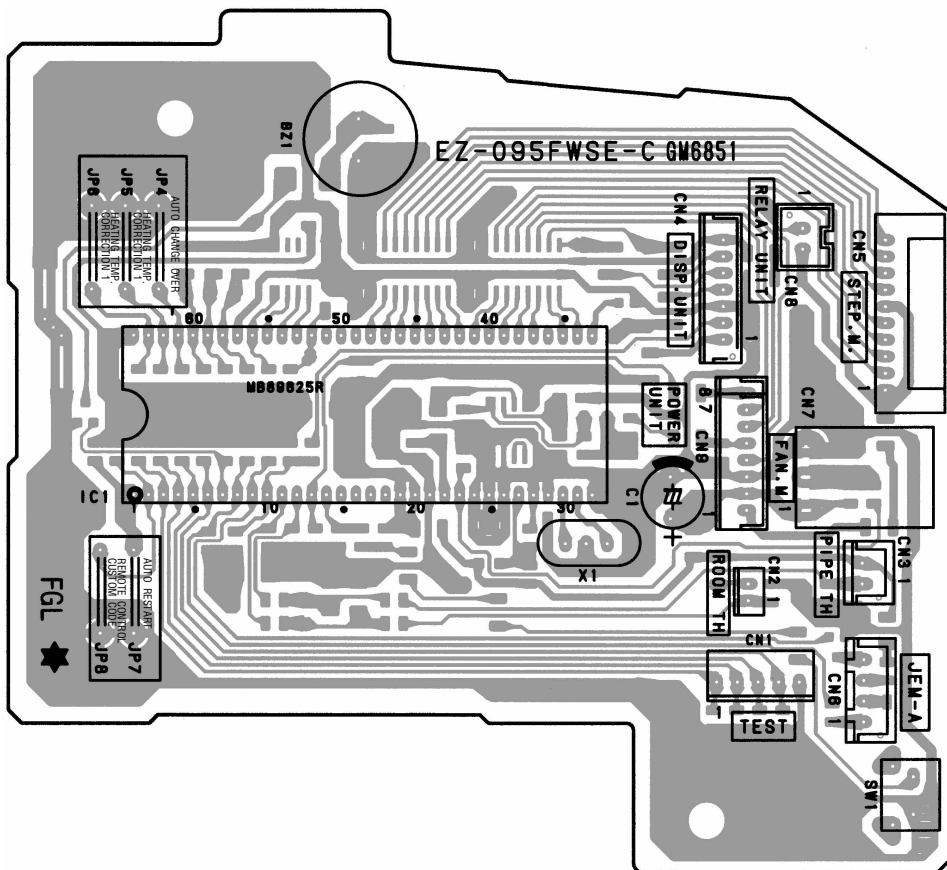
Models : ASY9RSLCW
 ASY12RSLCW

CONTROLLER PCB ASSEMBLY (MAIN PCB)

(Viewed from the solder side)

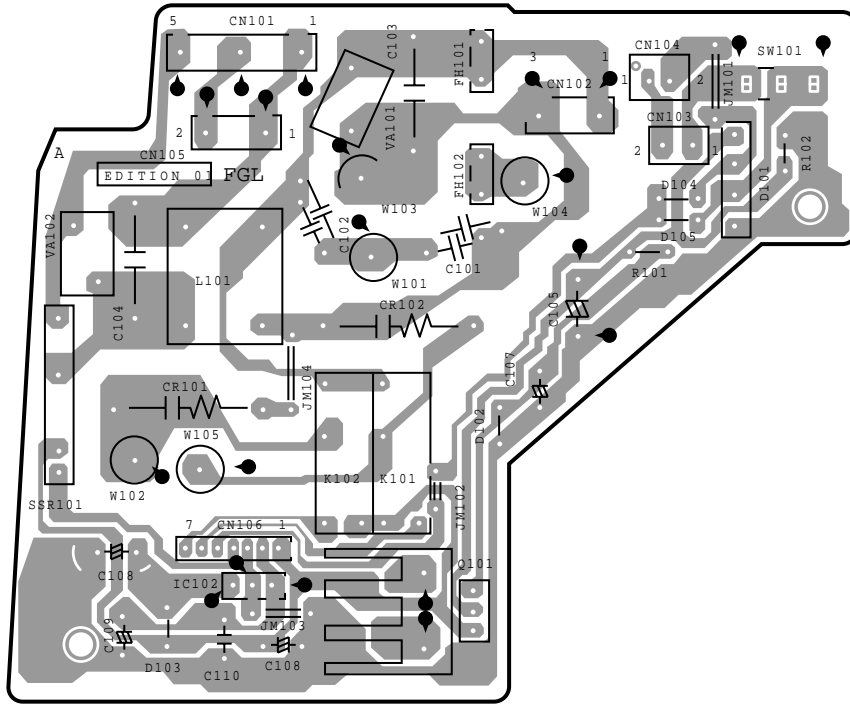


(Viewed from the component side)



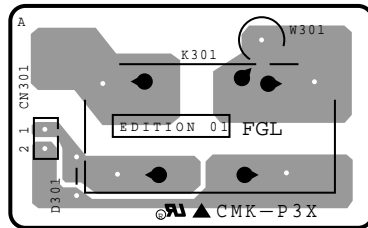
POWER SUPPLY PCB ASSEMBLY

(Viewed from the solder side)



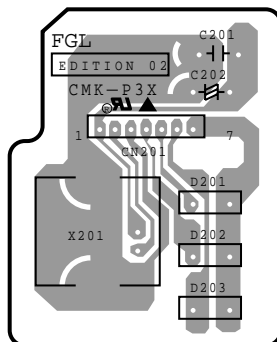
RELAY PCB ASSEMBLY

(Viewed from the solder side)



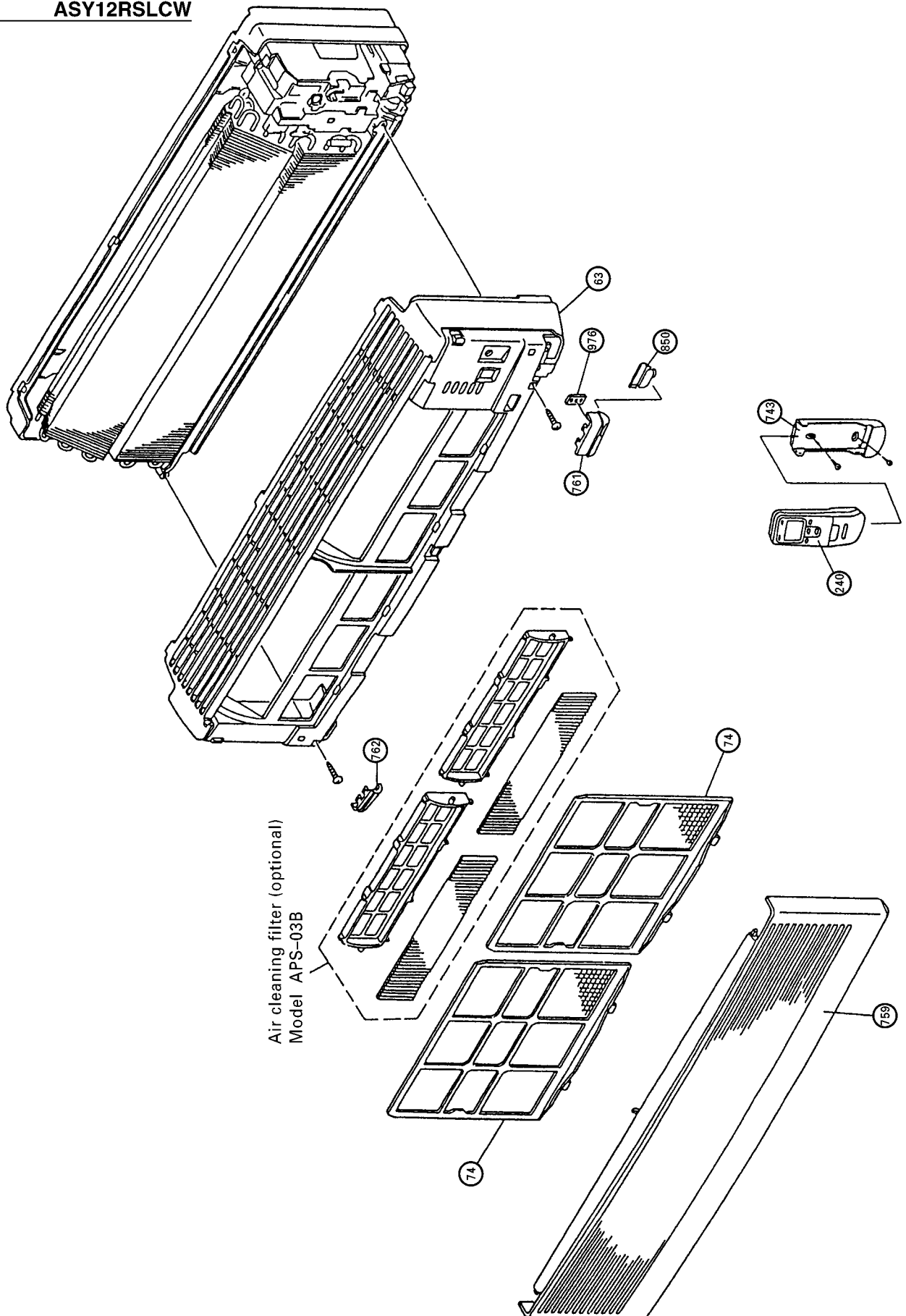
INDICATOR PCB ASSEMBLY

(Viewed from the solder side)

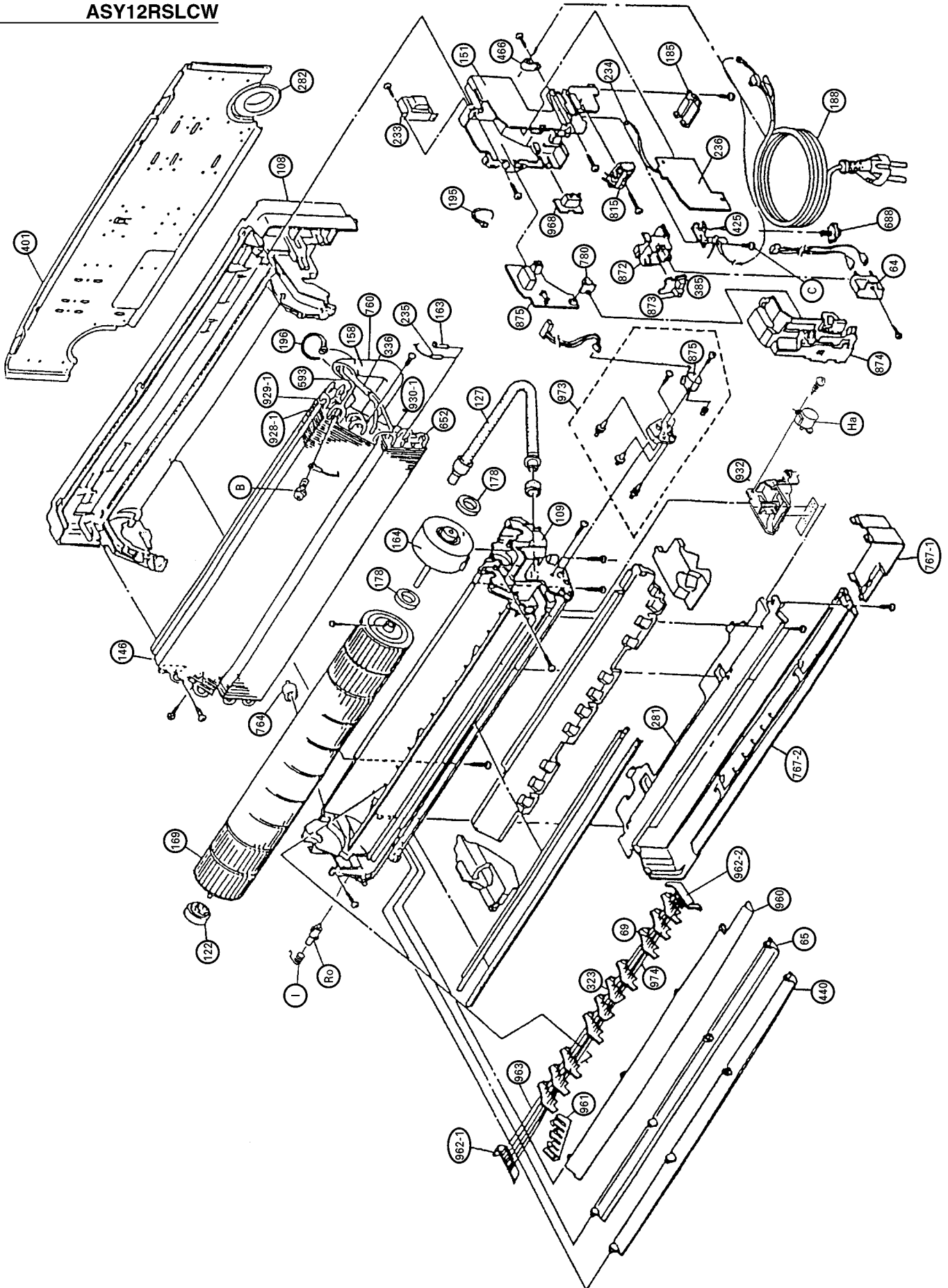


DISASSEMBLY ILLUSTRATION

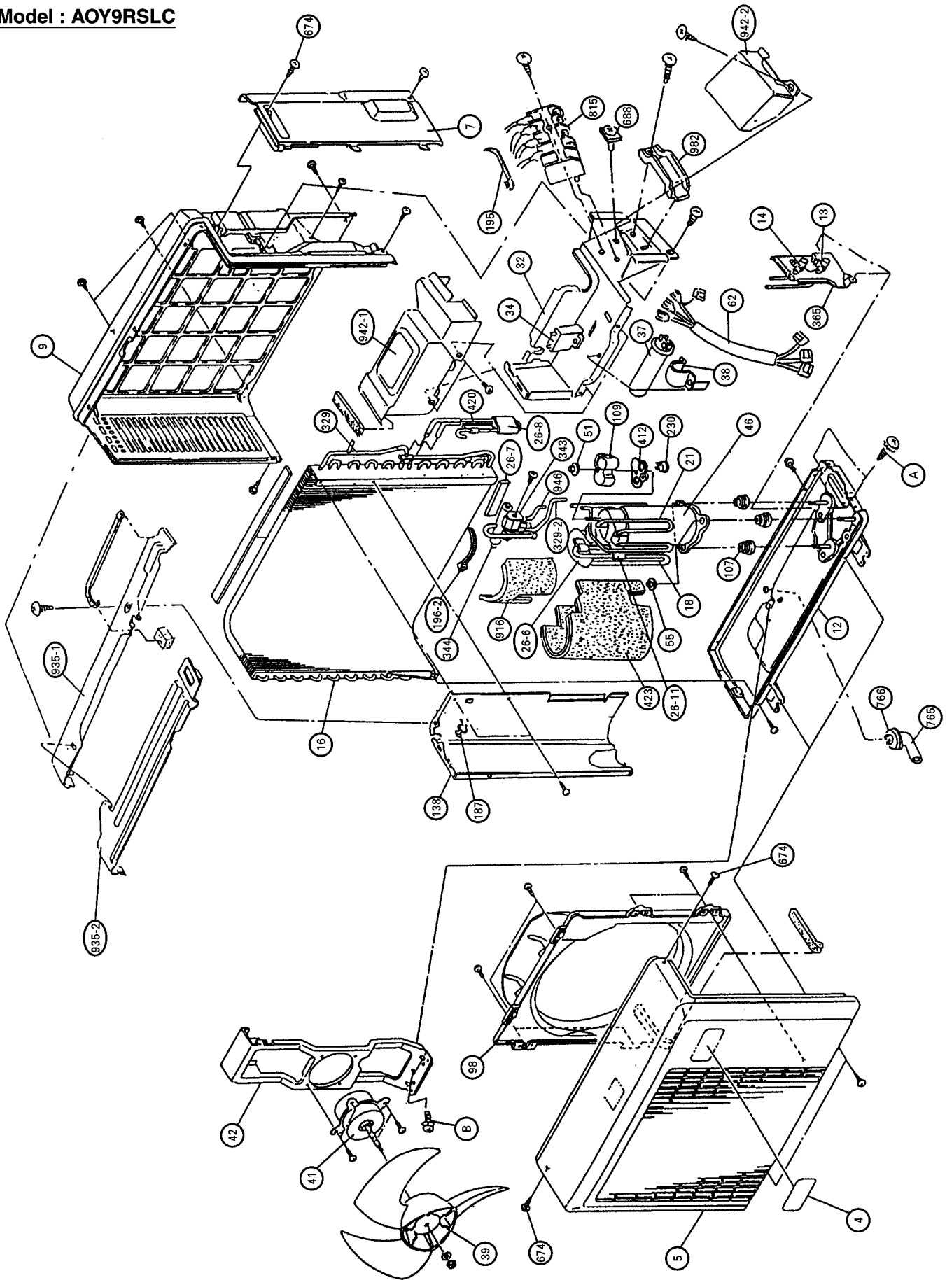
Models : ASY9RSLCW
ASY12RSLCW



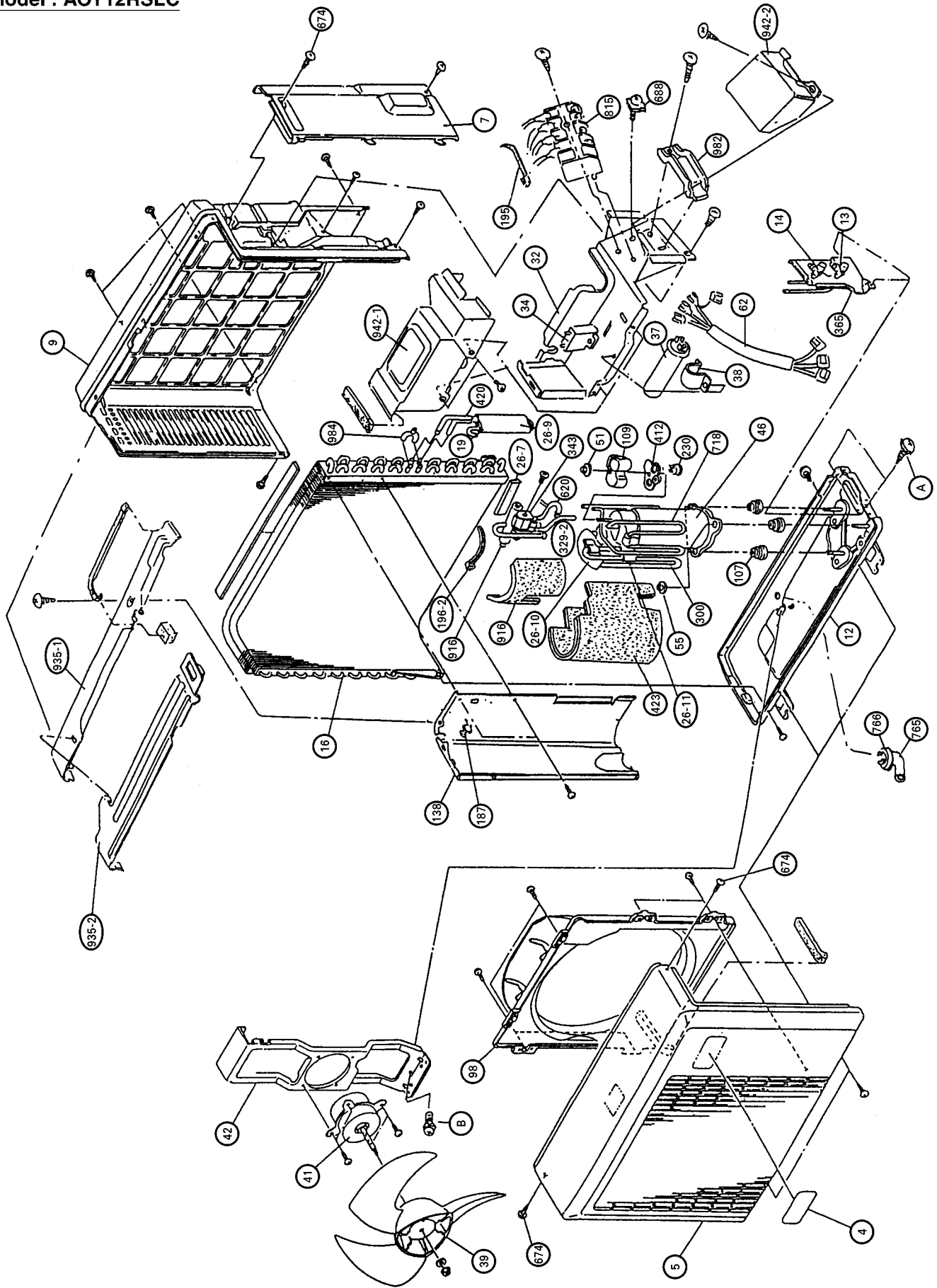
Models : ASY9RSLCW
ASY12RSLCW



Model : AOY9RSLC



Model : AOY12RSLC



PARTS LIST

When you order parts, please make a photocopy of this page and fill the number of the parts in the "Order" column.

INDOOR UNIT

Ref. No.	Description	Part No.		Ord. Q'ty	Ref. No.	Description	Part No.		Ord. Q'ty
		ASY9RSLCW	ASY12RSLW				ASY9RSLCW	ASY12RSLW	
63	Front Panel Assy	9305656097	9305656097		760	Insulation (Pipe)-E	9304607007	9304607007	
64	Capacitor (Fan Motor)	9700468103	9700468103		761	Side Cover-R	9305996025	9305996025	
65	Flow Control Panel-Z	9305443017	9305443017		762	Side Cover-L	9305437054	9305437054	
69	Louver-A	9305415014	9305415014		764	Drain Cap Assy	9304150008	9304150008	
74	Filter	9305444014	9305444014		767-1	Bottom Cover-A	9309801011	9309801011	
108	Base	9309755017	9309755017		767-2	Bottom Cover-B	9309802018	9309802018	
109	Casing	9305411016	9305411016		780	KEY Top (Slide Switch)	9303526002	9303526002	
122	Shaft Holder-B	9303066010	9303066010		815	Terminal-4P	9701955039	9701955039	
127	Drain Hose Assy	9305550029	9305550029		850	Window (Receiver)	9305439010	9305439010	
146	Evaporator Assy	9308555014	9308555014		872	Indicator Case	9305978014	9305978014	
151	Control Box	9305448036	9305448036		873	Lamp Cover	9305451012	9305451012	
158	Connecting Pipe Assy	9306416010	9307073007		874	Control Box Cover	9305977017	9305977017	
163	Thermistor Spring	313104262701	313104262701		875	Power Supply PCB Assy	9702440220	9702440220	
164	Fan Motor Assy-IN	9306448011	9306448011		876-1	Step Motor	9305780006	9305780006	
169	Cross-flow Fan Assy	9307836015	9307836015		876-2	Step Motor	9305892006	9305892006	
178	Motor Cushion-A	9306274009	9306274009		928-1	U-Pipe (BB)	9305747009	9305747009	
185	Wire Clamp	9305940004	9305940004		929-1	U-Pipe (V)	9305748006	9305748006	
188	Power Cord Assy	9702595012	9702595012		930-1	U-Pipe (W)	9305749003	9305749003	
195	Clamp SKB-100	313361275805	313361275805		932	Outlet Cover	9305414017	9305414017	
196	Clamp SKB-150	313035356905	313035356905		960	Diffuser	9305412013	9305412013	
233	Power Transformer	9701565023	9701803026		961	Guard Clamp	9306332013	9306332013	
234	Thermistor Assy-(Room)	9702324018	9702324018		962-1	Guard Holder-L	9305753017	9305753017	
235	Thermistor Assy-(Pipe)	9702425012	9702425012		962-2	Guard Holder-R	9305752010	9305752010	
236	Controller PCB Assy	9702884024	9702884017		963	Fan Guard	9305751013	9305751013	
240	Remote Control Unit	9307113055	9307113055		964	Flare Nut-A	9307767005	313996239804	
281	Clamp Metal (Pipe)	9305430000	9305430000		965	Flare Nut-B	9307768002	9307768002	
282	Wall Cap-B (Accessory)	313714296205	313714296205		966	Bonnet-A	9304798019	—	
323	Louver-B	9305597017	9305597017		967-1	Bonnet-B	9304799016	9304799016	
336	Suction Pipe-A Assy	9305741014	9306175009		967-2	Bonnet-C	—	9306700010	
385	Indicator PCB Assy	9701364213	9701364213		968	Relay PCB Assy	9702443214	9702443214	
401	Wall Hook Bracket	9304358008	9304358008		973	Gear Assy	9305452002	9305452002	
425	Earth Terminal	9306483005	9306483005		974	Joint (Louver)	9305416011	9305416011	
440	Flow Control Panel-U	9306173036	9306173036		976	Window (Indicator)	9305440016	9305440016	
466	Clamp NK-4N	313714328805	313714328805		B	Machine Screw (with Spring Washer)	0700179013	0700179013	
593	Discharge Pipe-A Assy	9306417017	9306417017		C	Machine Screw (with Spring Washer)	301291134088	301291134088	
652	Thermistor Holder Pipe	313714262805	313714262805						
743	Remote Control Holder Case	9305642014	9305642014						
759	Intake Grille	9305995028	9305995028						

When you order parts, please make a photocopy of this page and fill the number of the parts in the "Order" column.

OUTDOOR UNIT

Ref. No.	Description	Part No.		Ord. Q'ty	Ref. No.	Description	Part No.		Ord. Q'ty
		AOY9RSLC	AOY12RSLC				AOY9RSLC	AOY12RSLC	
4	Emblem-Rear	9306337001	9306337001		187	Clamp No. 1219	313361271706	313361271706	
5	Cabinet Front Panel, Plastic	9306386016	9306386016		195	Clamp SKB-100	313361275805	313361275805	
7	Connector Cover (Cabinet)	9306119010	9306119010		196	Clamp SKB-150	313035356905	313035356905	
9	Cabinet Rear Panel, Plastic	9306385019	9306385019		196-2	Clamp SKB-3MC	9305335008	9305335008	
12	Base Assy, Painted	9306118020	9306118020		230	Overlord Relay	—	9306466008	
13	3-Way Valve	9311534013	9311535010		300	Suction Pipe-C Assy	—	9307932007	
14	2-Way Valve	9311533016	9311533016		329	Coupling Pipe Assy	9306400002	—	
16	Condenser Assy	9306477004	9306482008		329-2	Coupling Pipe-C	9306433000	9306442002	
18	Suction Pipe	9307931000	—		343	Solenoid Coil	—	9360538031	
19	Capillary Tube	9308960009	9308325006		344	4-Way Valve	9311789017	9307556012	
20	Discharge Pipe Assy	9307035012	9307036019		365	Bracket (Valve)	9306748012	9306748012	
26-6	BR Sheet 100x120xT5	9305039029	—		412	Terminal Gasket (Comp.)	9307089008	9351121006	
26-7	BR Sheet 30x120xT7	9305039036	9305039036		420	Capillary Assy (with Check Valve)	9308960009	9308325006	
26-8	BR Sheet 65x170xT2	9305490011	—		423	Noise Insulation-F	9306424008	9306424008	
26-9	BR Sheet 180x180xT2	—	9305039067		620	Inlet Pipe Assy	—	9306394004	
26-10	BR Sheet 100x160xT5	—	9305039074		674	Tapping Screw (Special)	9305848010	9305848010	
26-11	BR Sheet 50x190xT3	9300389068	9300389068		688	Screw (with Square Washer)	313681304205	313681304205	
32	Control Box Metal	9305972005	9305972005		765	Drain Pipe	9301102000	9301102000	
34	Capacitor (Fan Motor)	9900089023	9900089023		766	Drain Pipe Packing	9301143003	9301143003	
37	Capacitor (Running)	9307588013	9307588013						
38	Clamp Metal (Capacitor)	313468061808	313468061808		815	Terminal-4P	9306488017	9306488017	
39	Propeller Fan	9305538003	9305538003		916	Noise Insulation-G	9306362003	9306362003	
41	Fan Motor	9307095016	9306402013		935-1	Reinforcement (Cabinet Top)	9305973002	9305973002	
42	Bracket (Motor)	9305536016	9305536023		935-2	Reinforcement-F (Cabinet Top)	9306123000	9306123000	
46	Compressor Assy	9308997005	9306496005		942-1	Control Box Cover-A Metal	9308562012	9308562012	
51	Special Nut M5	313199233602	313199233602		942-2	Control Box Cover-B Metal	9305975006	9305975006	
55	Special Nut M8	313252257701	313252257701		946	Inlet Pipe	9306401009	—	
62	Wire Assy (Shield)-A	9305971026	9305971026		982	Cord Clamp (Plastic, Black)	9302271002	9302271002	
98	Fan Ring	9305581023	9305581023		A	Screw (with Inner Washer)	9357297002	9357297002	
107	Rubber Seat-A	9307092008	9351813017		B	Screw (with Spring Washer)	0700179013	0700179013	
109	Terminal Cover (Comp.)	9307090004	9351120009		984	U Pipe (Y) D9.52	—	9305523009	
138	Separate Wall	9305971008	9305971008						

Note : Always use specified screws, since Ref. No. 688, A, B and C are screws for the earth.

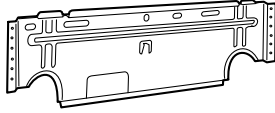
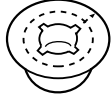



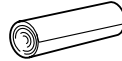


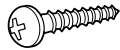


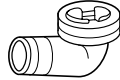
Ref. No.688 : Machine screw (with spring washer) M4 x P0.7 x L10, plating thickness 5µ or more.

A : Taapping screw (with inner clip washer) M4 x L10, plating thickness 5µ or more.

B : Machine screw (with spring washer) M4 x P0.7xL10, plating thickness 5µ or more.

C : Machine screw (with spring washer) M4 x P0.7xL8, plating thickness 5 µ or more.

STANDARD ACCESSORIES

Name and Shape	Part No.	
	ASY9RSLCW	ASY12RSLCW
Wall hook bracket 	9304358008	9304358008
Wall cap-B 	313714296205	313714296205
Remote control unit 	9307113055	9307113055
Remote control holder case 	9305642014	9305642014
Battery (penlight) 	313187358304	313187358304
Cloth tape 	9304232001	9304232001
Seal-A 	—	9304536000
Cable mark 	9301385007	9301385007
Tapping screw (big) (ø4 x 20) 	301141164200	301141164200
Tapping screw (small) (ø3 x 12) 	301141533125	301141533125
Hexagon wrench 	9351228019	9351228019
Drain pipe (Including drain packing) 	9303029015	9303029015