

**SPLIT TYPE
AIR CONDITIONER**

CASSETTE type (50Hz)

SERVICE MANUAL

Models	Indoor unit	Outdoor unit
	AUY25ALB-W	AOY25AZBL
	AUY25RLB-W	AOY25RZBL

C O N T E N T S

SPECIFICATIONS.	1
DIMENSIONS.	2
CIRCUIT DIAGRAM	3
REFRIGERANT SYSTEM DIAGRAM.	5
INDOOR PRINTED CIRCUIT BOARD CIRCUIT DIAGRAM.	6
OUTDOOR PRINTED CIRCUIT BOARD CIRCUIT DIAGRAM.	8
INDOOR P.C. BOARD LAYOUTS.	9
OUTDOOR P.C. BOARD LAYOUTS.	11
DISASSEMBLY ILLUSTRATION	12
PARTS LIST	18

S P E C I F I C A T I O N S

TYPE		COOLING	COOLING & HEATING
MODEL	IN	AUY25ALB-W	AUY25RLB-W
	OUT	AOY25AZBL	AUY25RZBL
COOLING CAPACITY	kW	7.00-7.10	6.95-7.05
HEATING CAPACITY	kW	—	7.60-7.85

POWER SOURCE	V	220-240	
	Hz	50	
RUNNING CURRENT (A)	COOL	12.8-13.2	12.7-13.0
	HEAT	—	12.0-12.3
INPUT WATTS (kW)	COOL	2.64-2.77	2.70-2.80
	HEAT	—	2.50-2.60
E.E.R. (kW/kW)	COOL	2.65-2.56	2.57-2.52
	HEAT	—	3.04-3.02
STARTING CURRENT	A	61	
MOISTURE REMOVAL	ℓ/h	2.5	

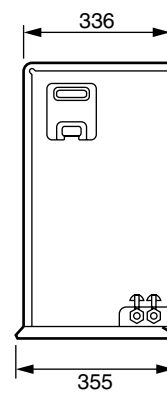
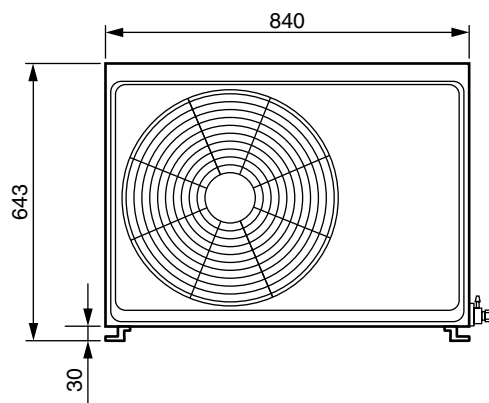
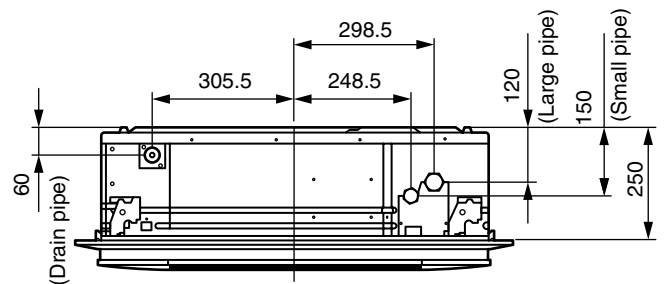
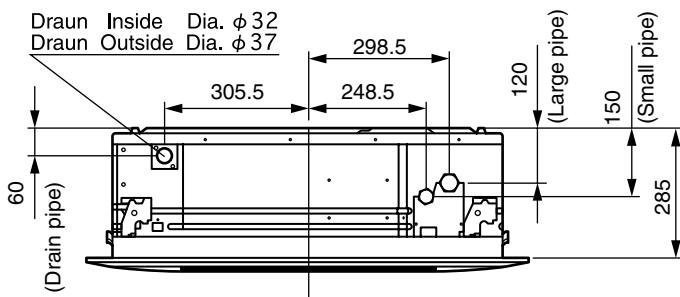
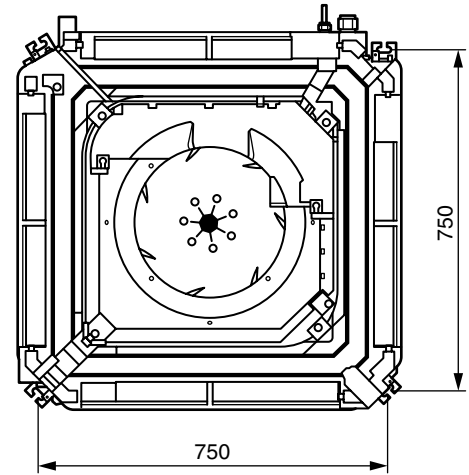
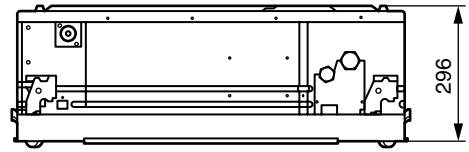
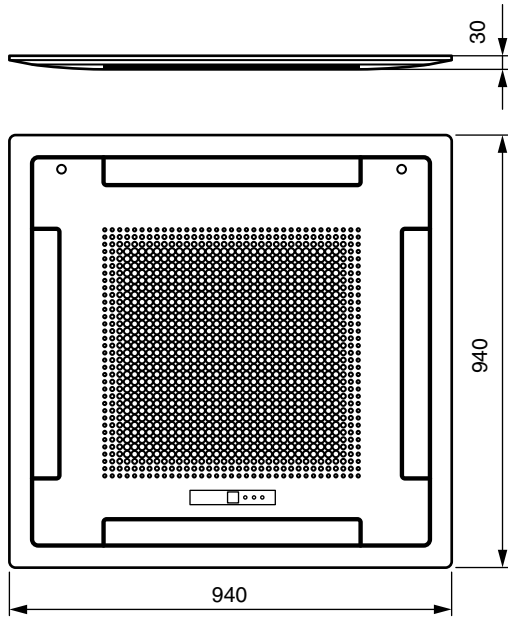
FAN SPEED (r.p.m.)	INDOOR	HIGH	430	
		MED	390	
		LOW	360	
	OUTDOOR	740		
AIR FLOW	INDOOR	m ³ /h	1,100	
	OUTDOOR		2,590	
DIMENSIONS H x W x D (mm)	NET	IN	296 x 830 x 830	
		GRILLE	35 x 940 x 940	
		OUT	643 x 840 x 336	
WEIGHTS [NET/GROSS] (kg)		IN	47/60	
		OUT	67/75	68/76
MAX PIPE LENGTH/HEIGHT	m	25/15		
REMOTE CONTROLLER TYPE	WIRED			

ADDITIONAL REFRIGERANT CHARGE

PIPE LENGTH		5m (16ft)	10m (33ft)	15m (50ft)	20m (66ft)	25m (82ft)	Additional refrigerant g/m
FULL CHARGE AMOUNT	AUY25ALB-W	2,100g (74.1oz)	2,185g (77.1oz)	2,270g (80.1oz)	2,355g (83.1oz)	2,440g (86.1oz)	17g/m (0.6oz/3.3ft)
	AUY25RLB-W	2,400g (84.7oz)	2,650g (93.5oz)	2,900g (102.3oz)	3,150g (111.1oz)	3,400g (119.9oz)	50g/m (1.8oz/3.3ft)

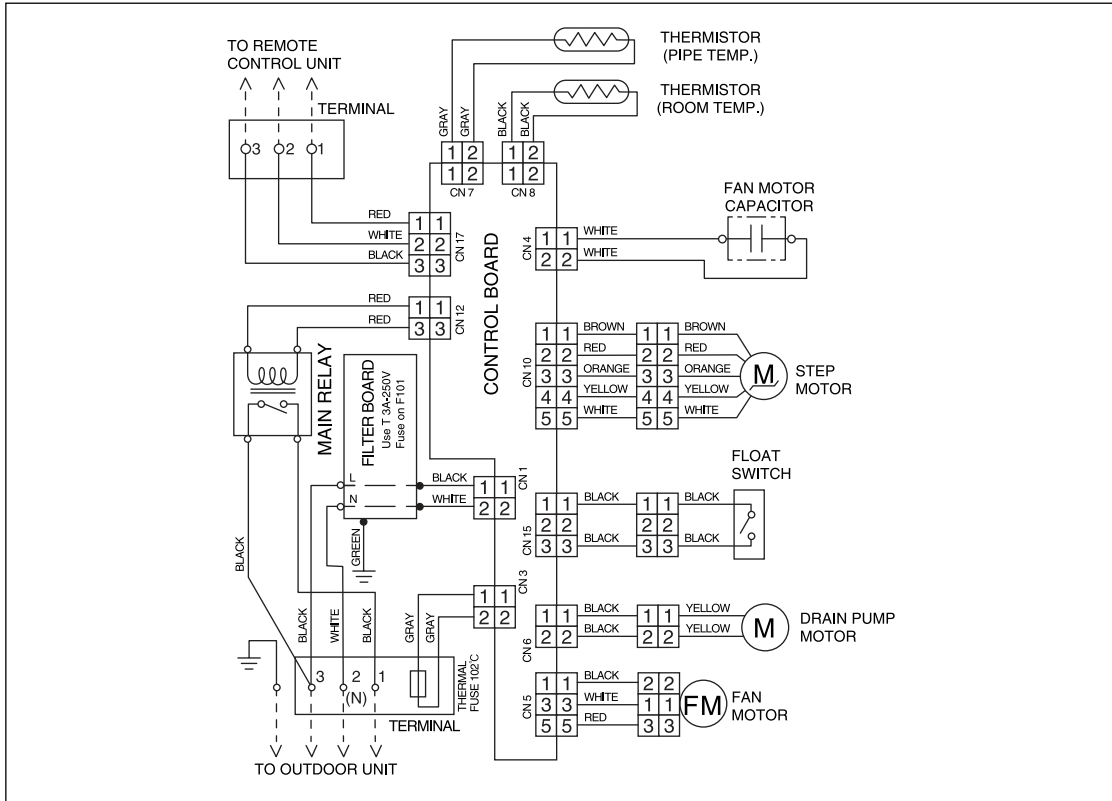
DIMENSIONS

Unit : mm

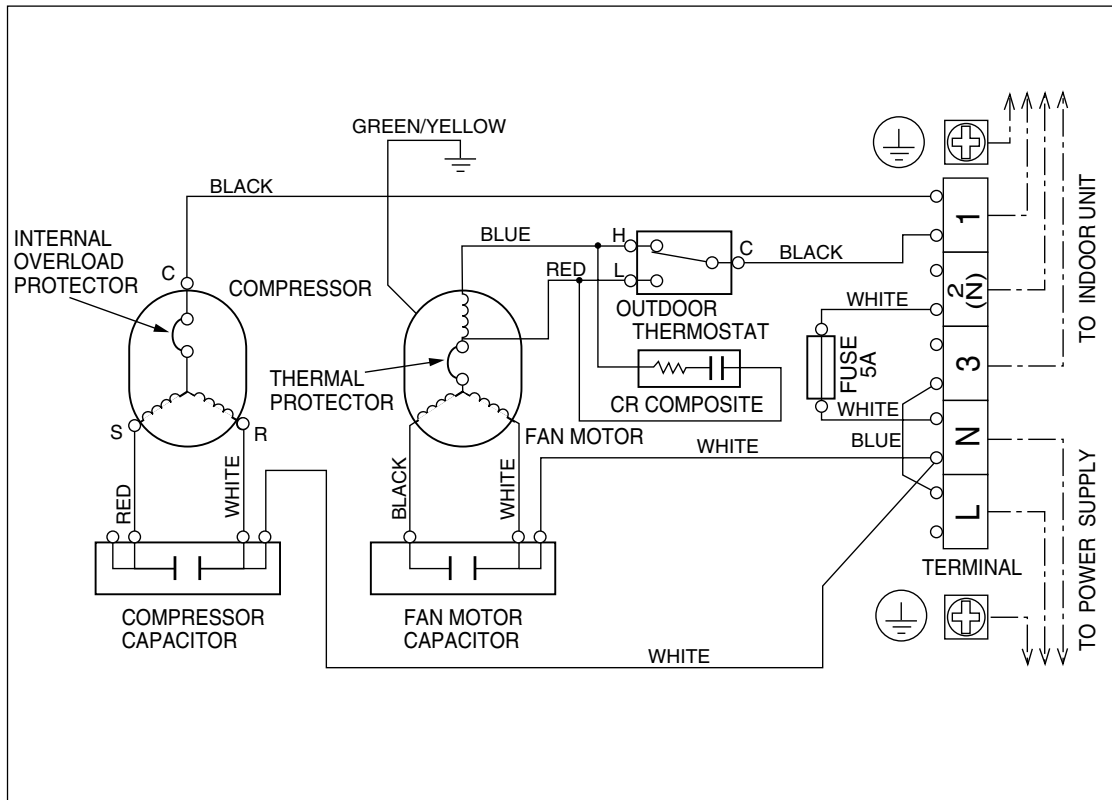


CIRCUIT DIAGRAM

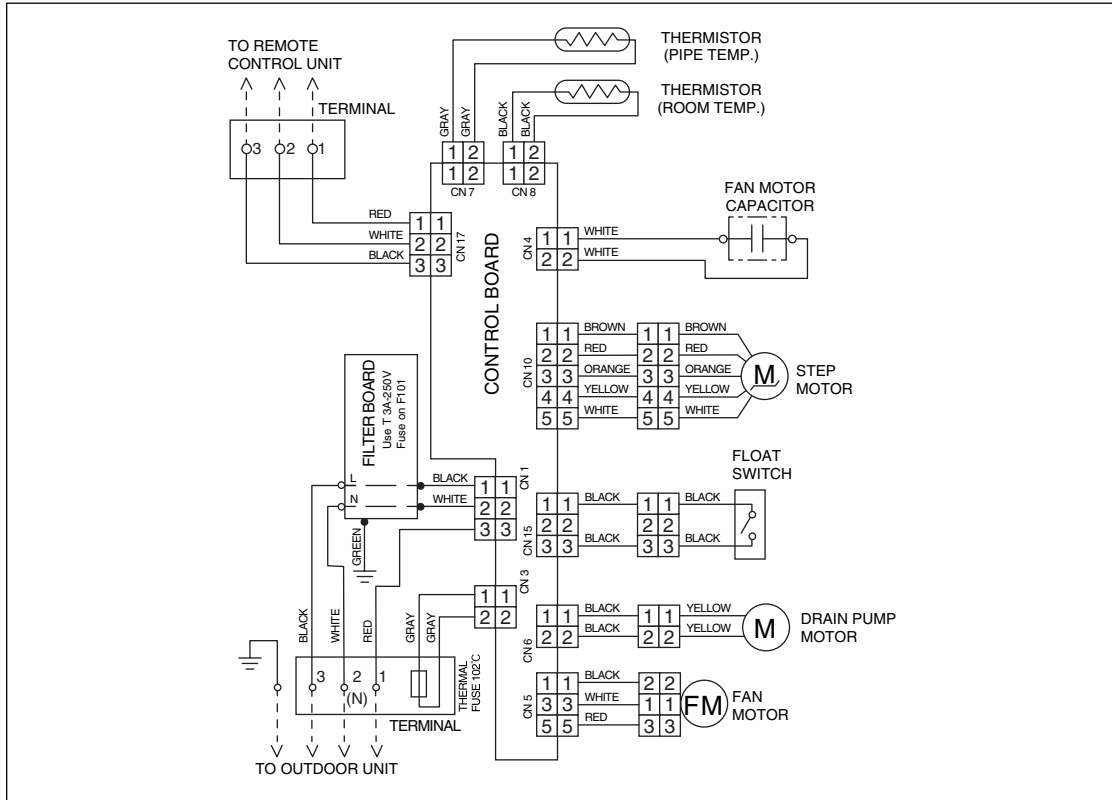
Model : AUY25ALB-W



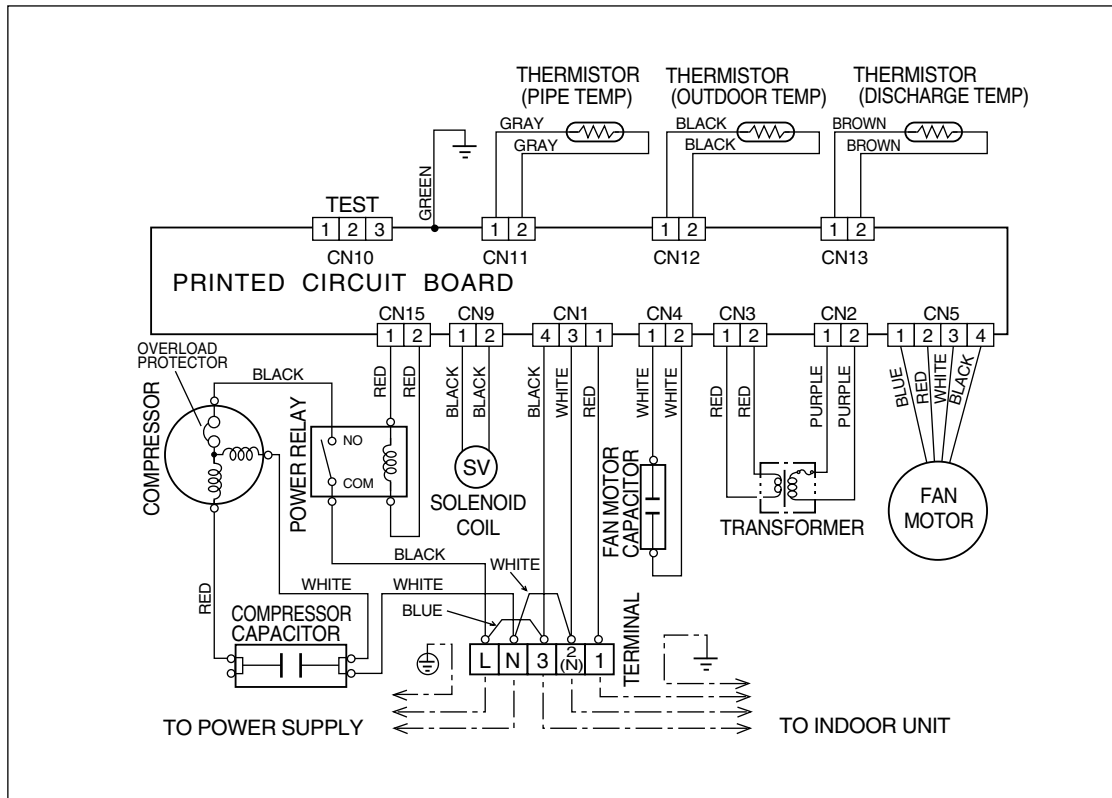
Model : AOY25AZBL



Model : AUY25RLB-W



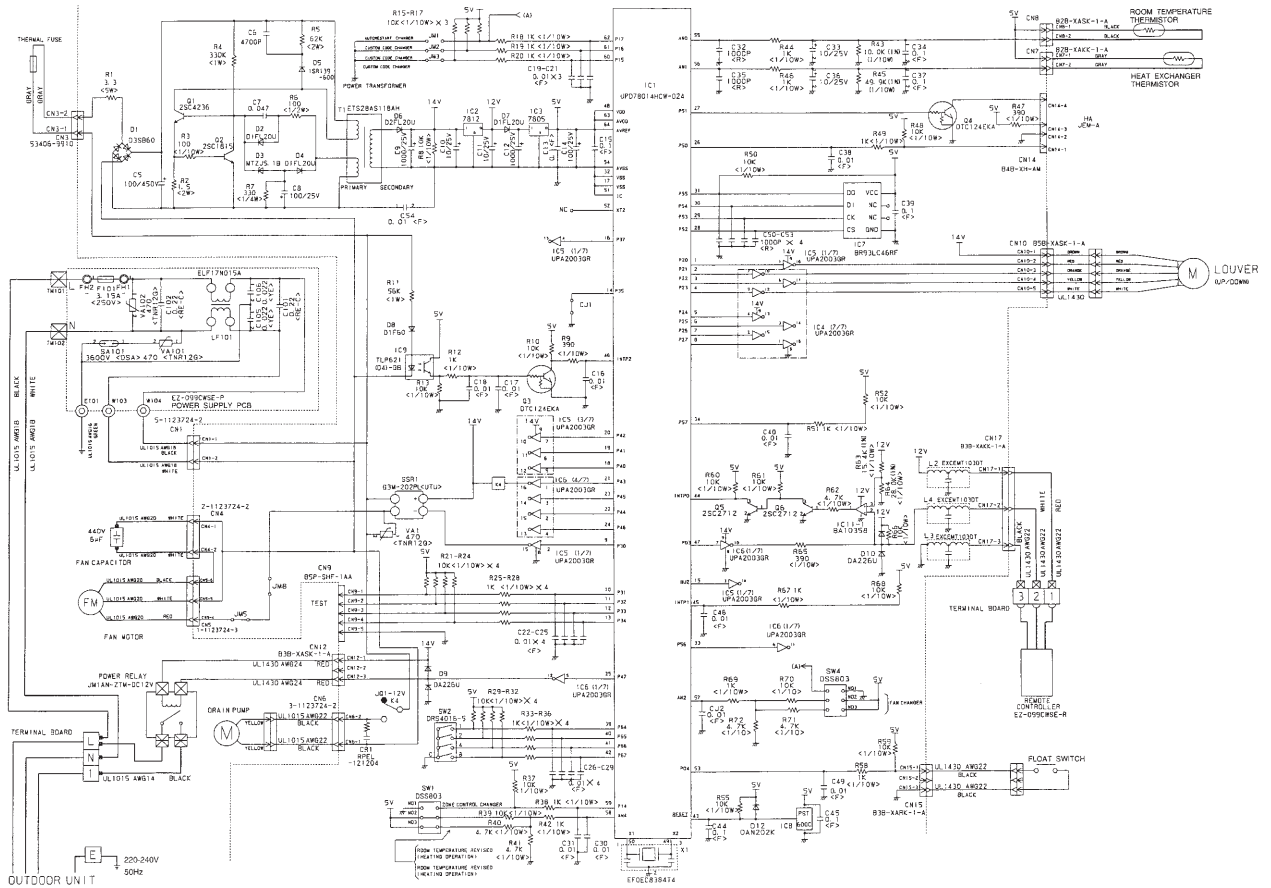
Model : AOY25RZBL



INDOOR PRINTED CIRCUIT BOARD CIRCUIT DIAGRAM

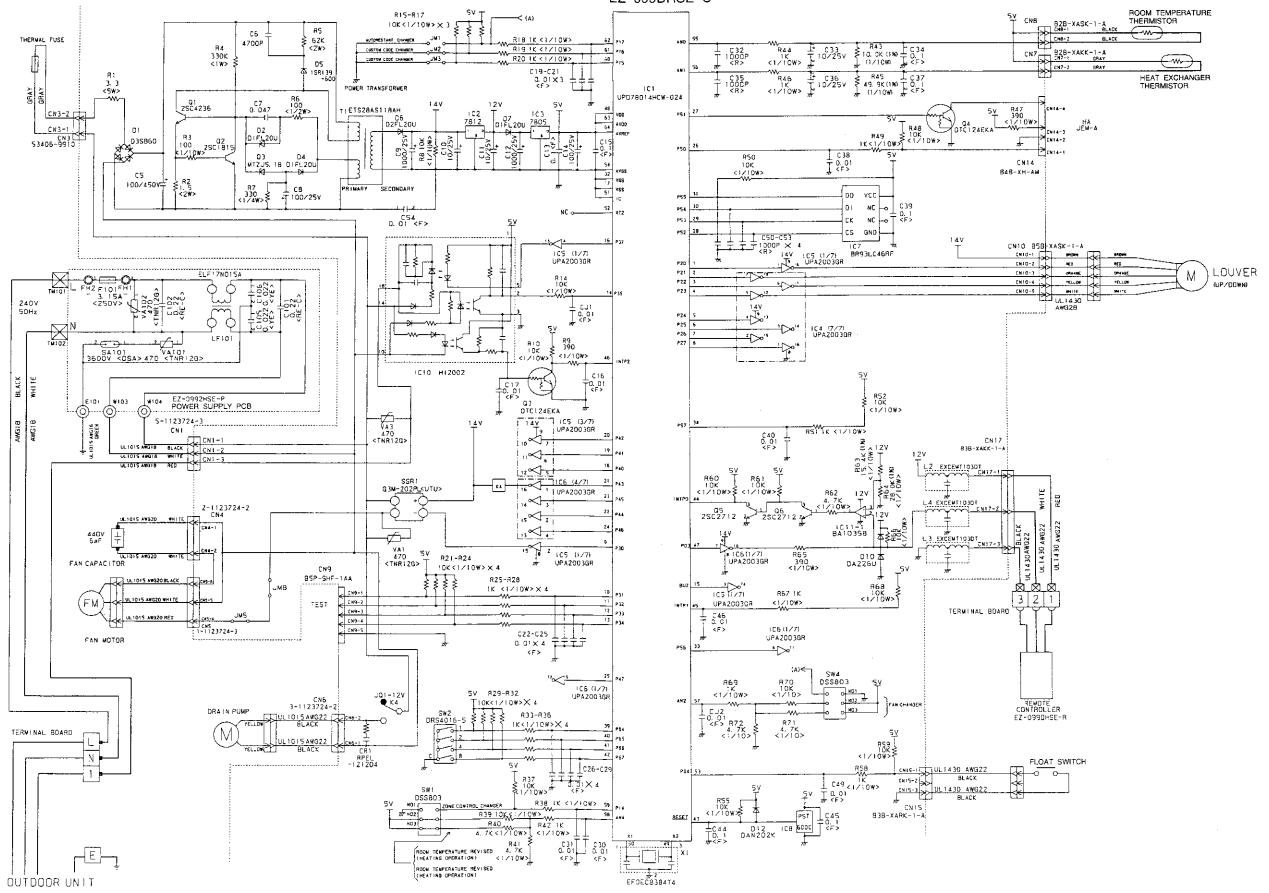
Model : AUY25ALB-W

CONTROLLER PCB ASSEMBLY (MAIN PCB)
EZ-099CWSE-C



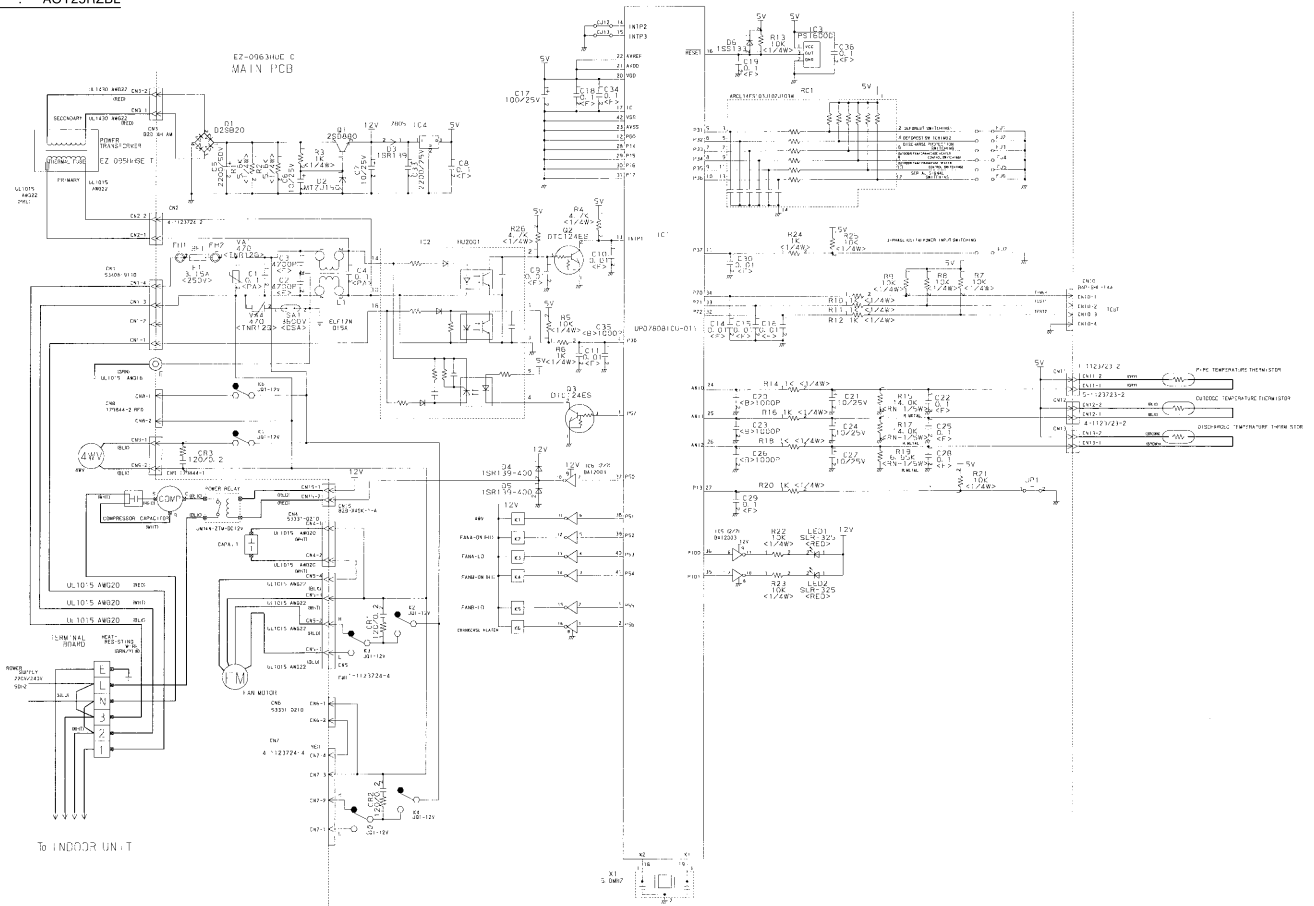
Model : AUY25RLB-W

CONTROLLER PCB ASSEMBLY (MAIN PCB)
EZ-099DHSE-C

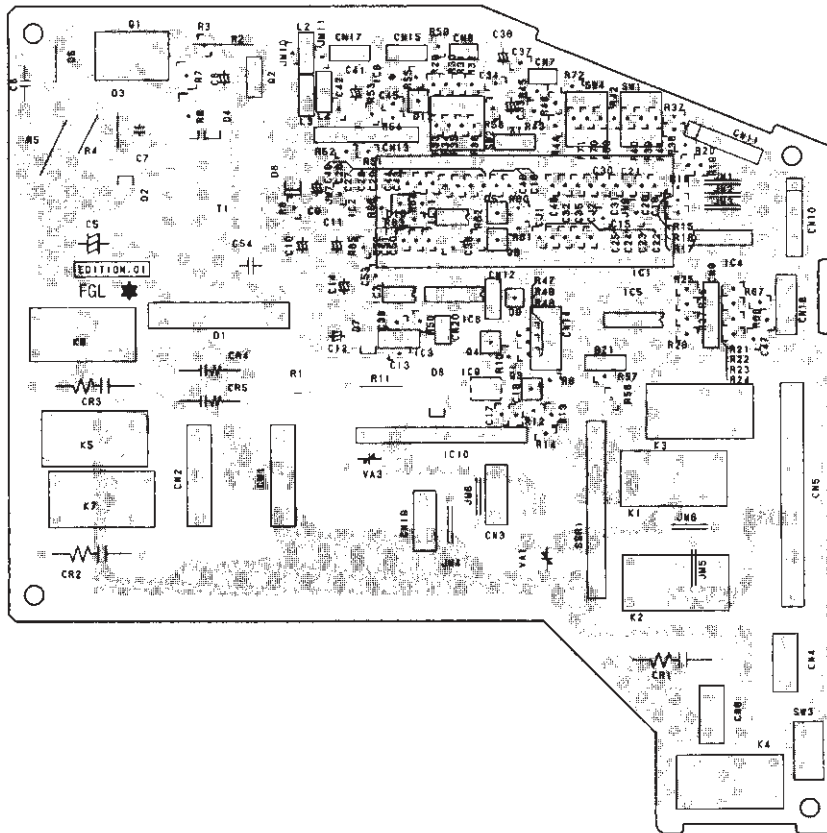


OUTDOOR PRINTED CIRCUIT BOARD CIRCUIT DIAGRAM

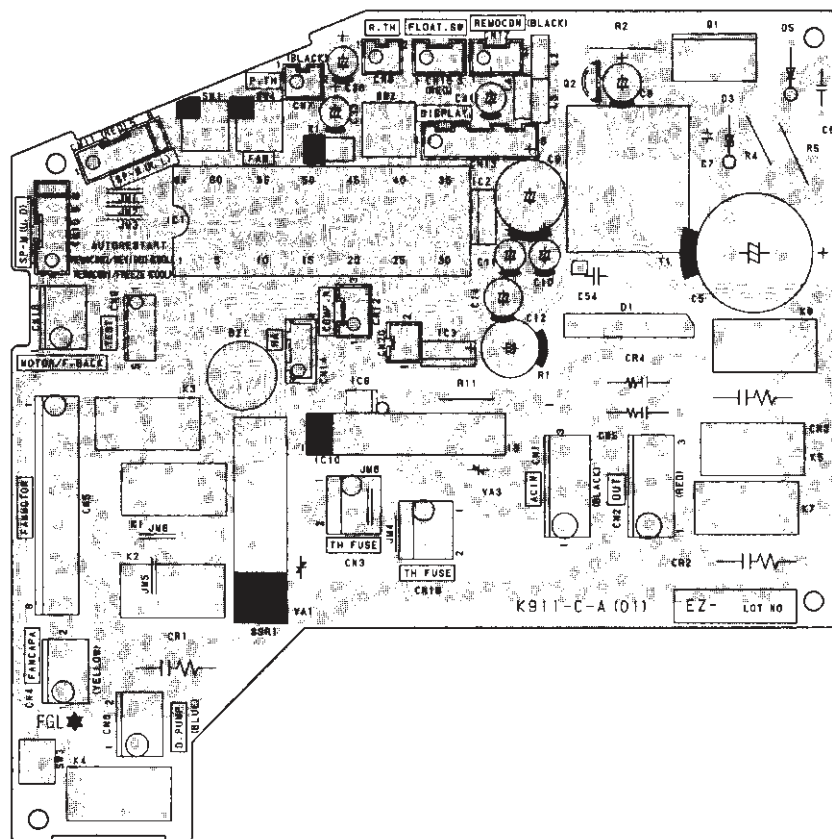
Model : AOY25RZBL



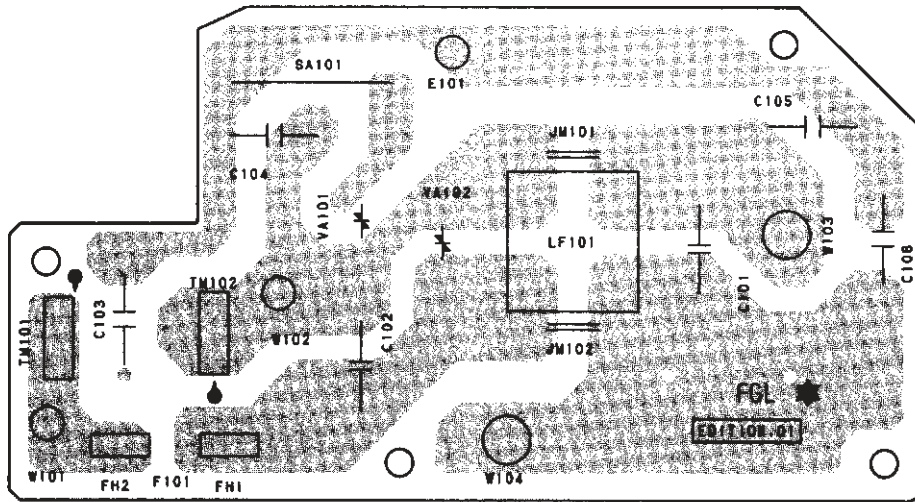
INDOOR P.C. BOARD LAYOUTS
CONTROLLER P.C. BOARD ASSEMBLY(MAIN PCB)
(Viewed from the solder side)



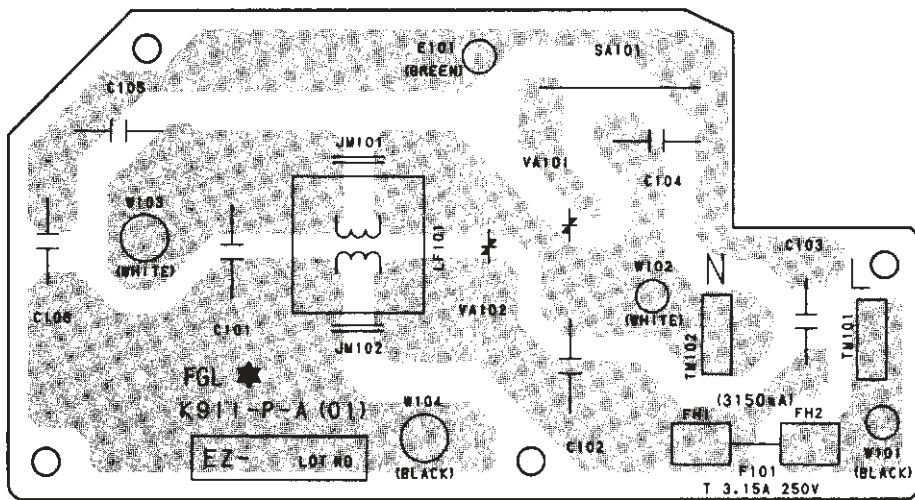
(Viewed from the component side)



FILTER P.C. BOARD ASSEMBLY
 (Viewed from the solder side)

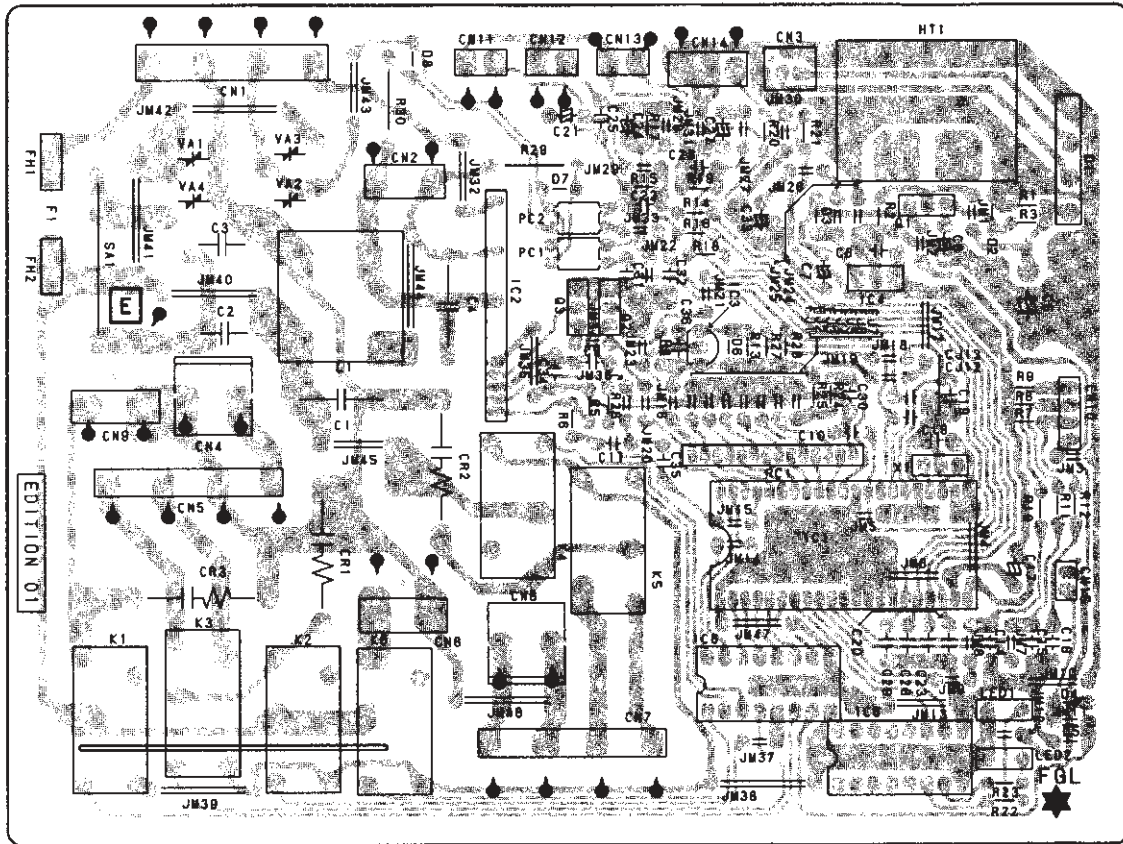


(Viewed from the component side)

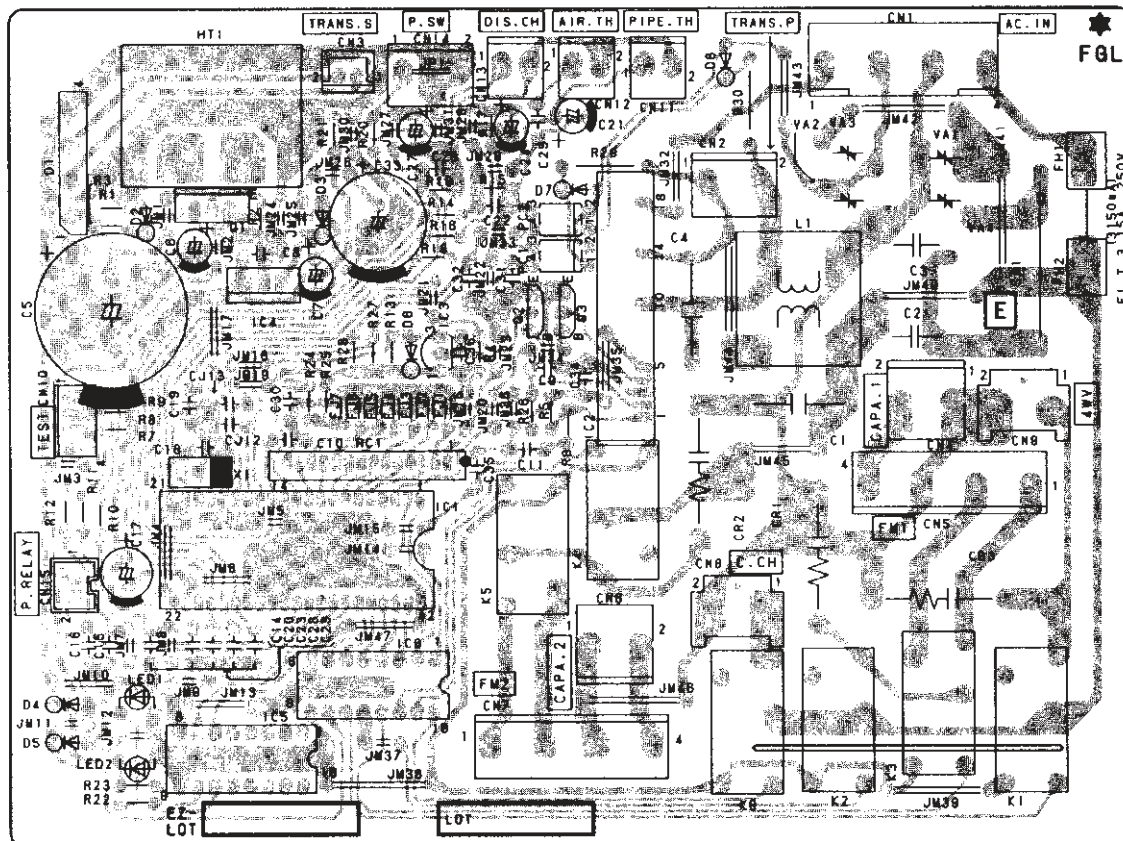


OUTDOOR P.C. BOARD LAYOUTS

(Viewed from the solder side)

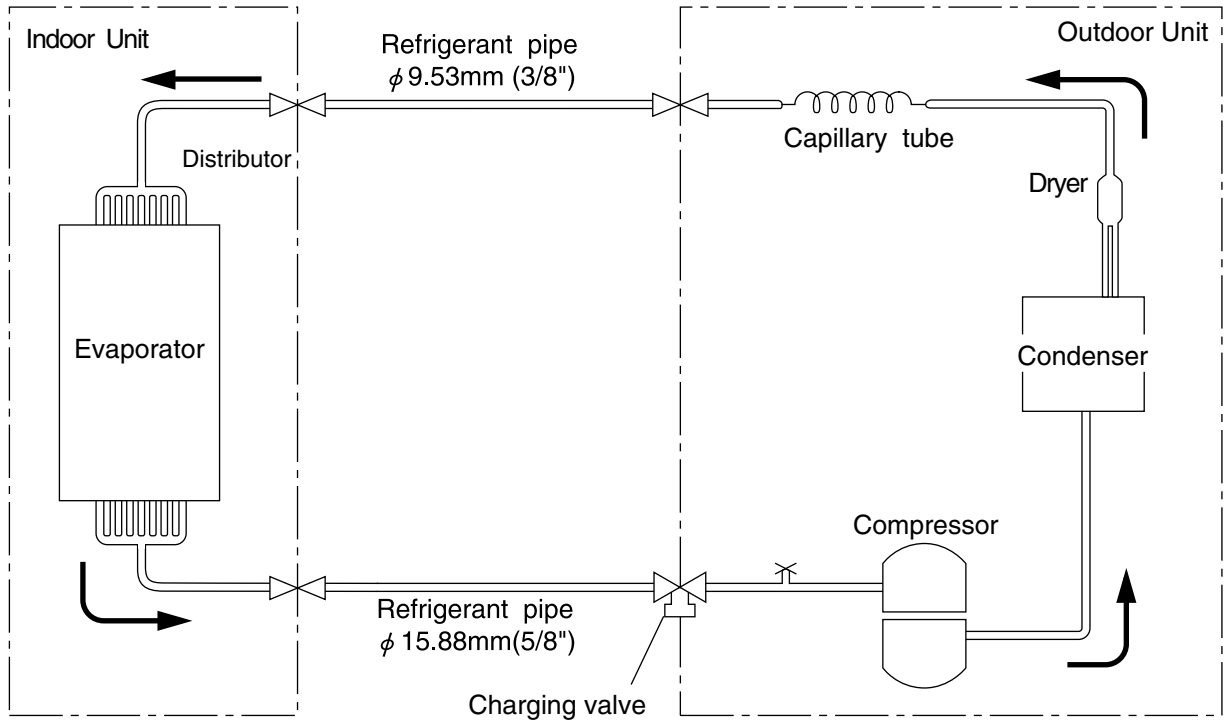


(Viewed from the component side)

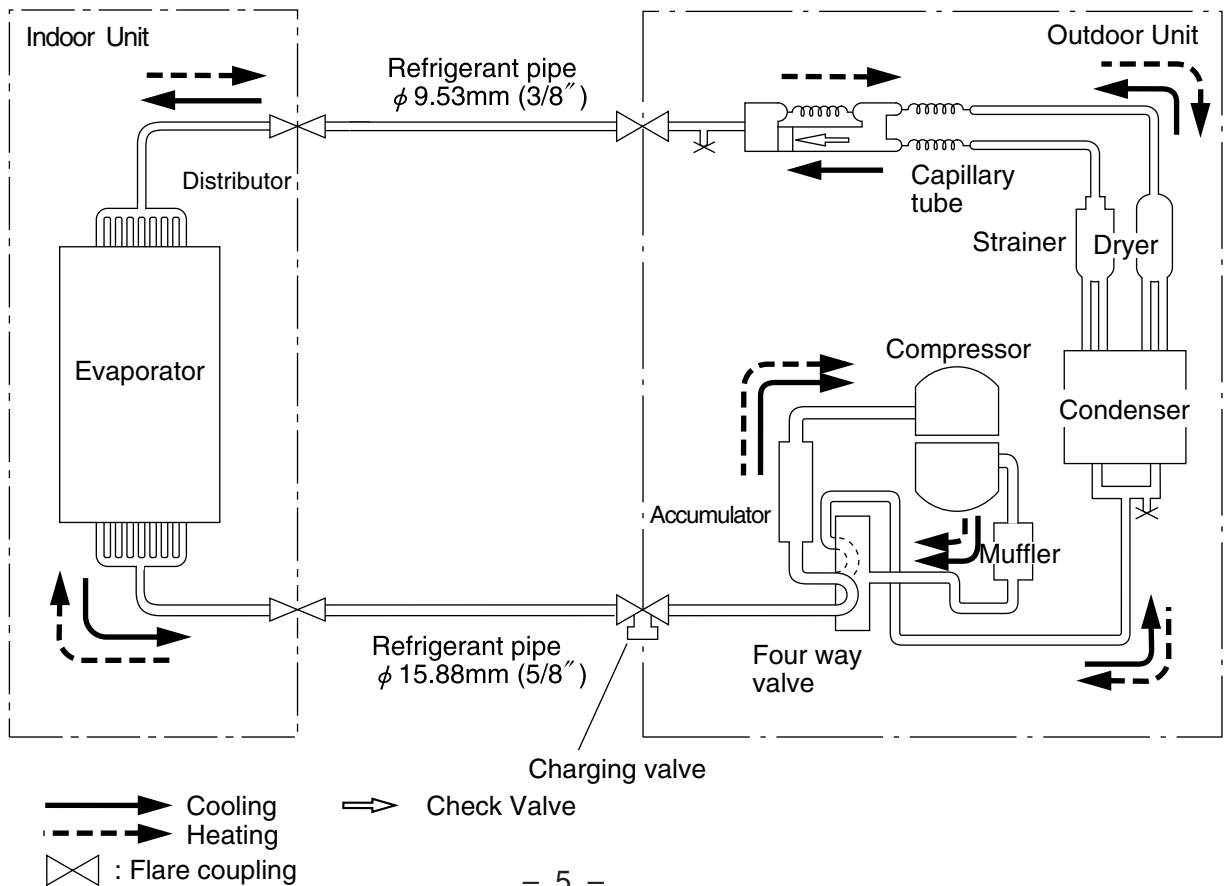


REFRIGERANT SYSTEM DIAGRAM

Models : AU Y25ALB-W / AOY25AZBL

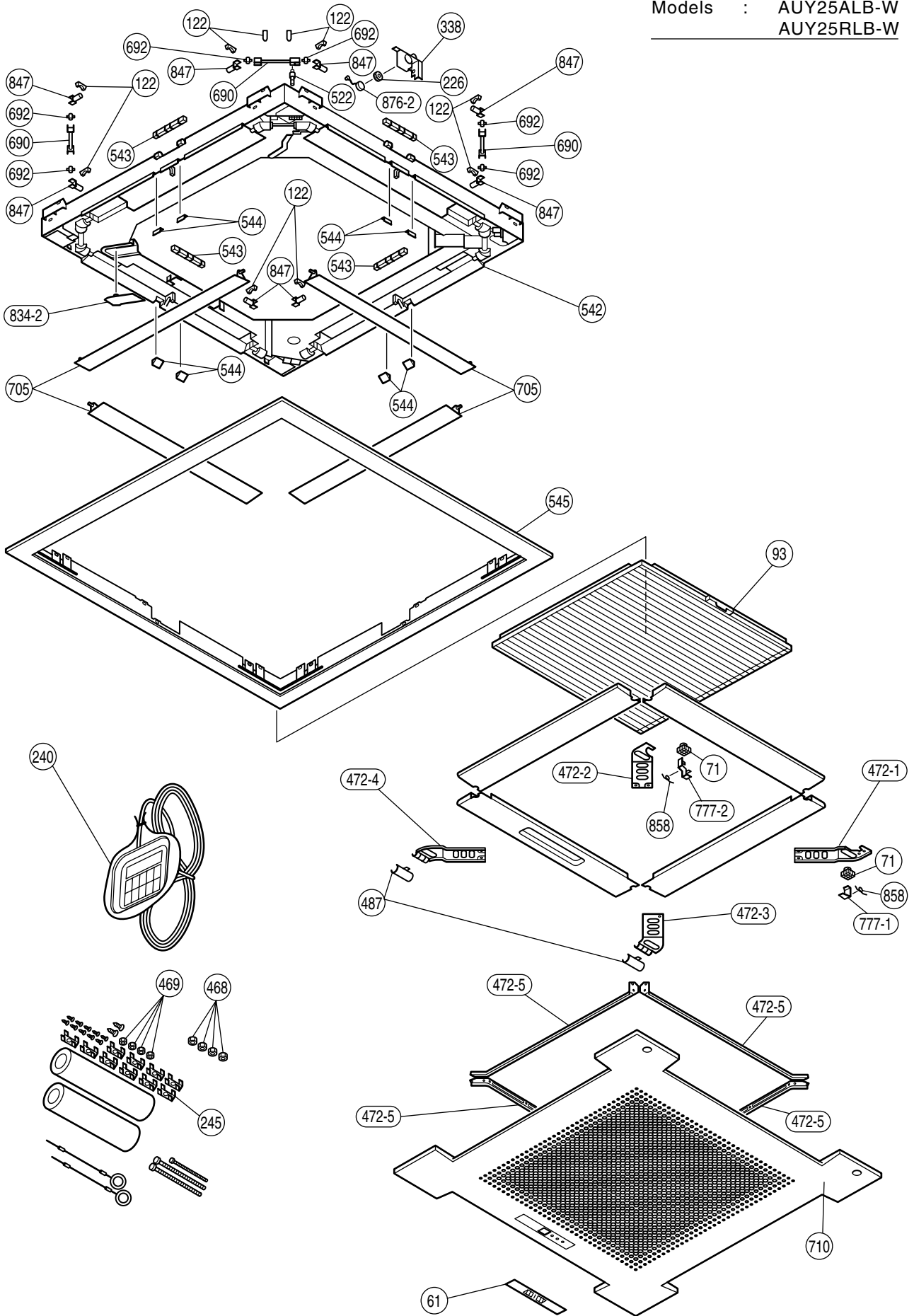


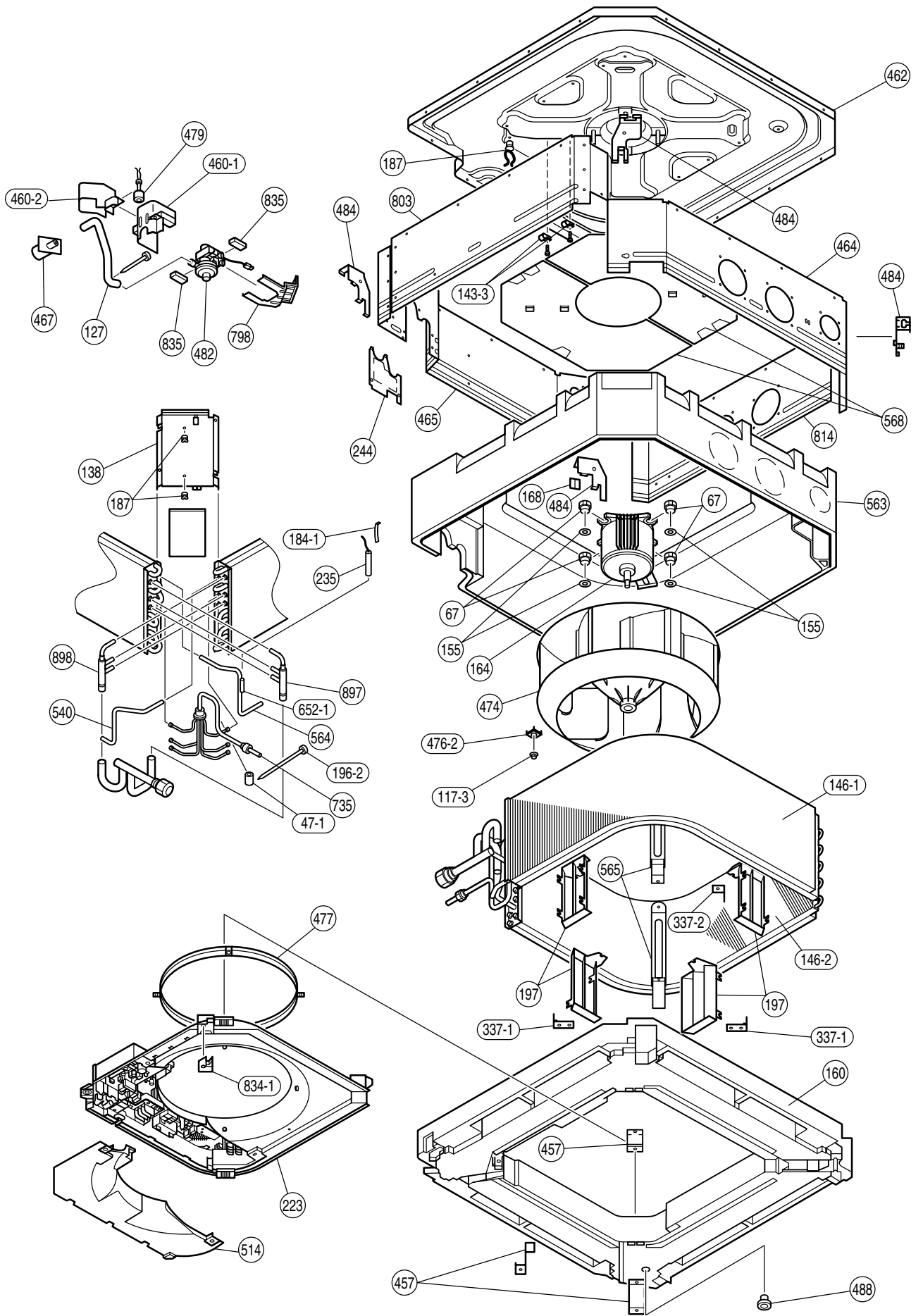
Models : AU Y25RLB-W / AOY25RZBL

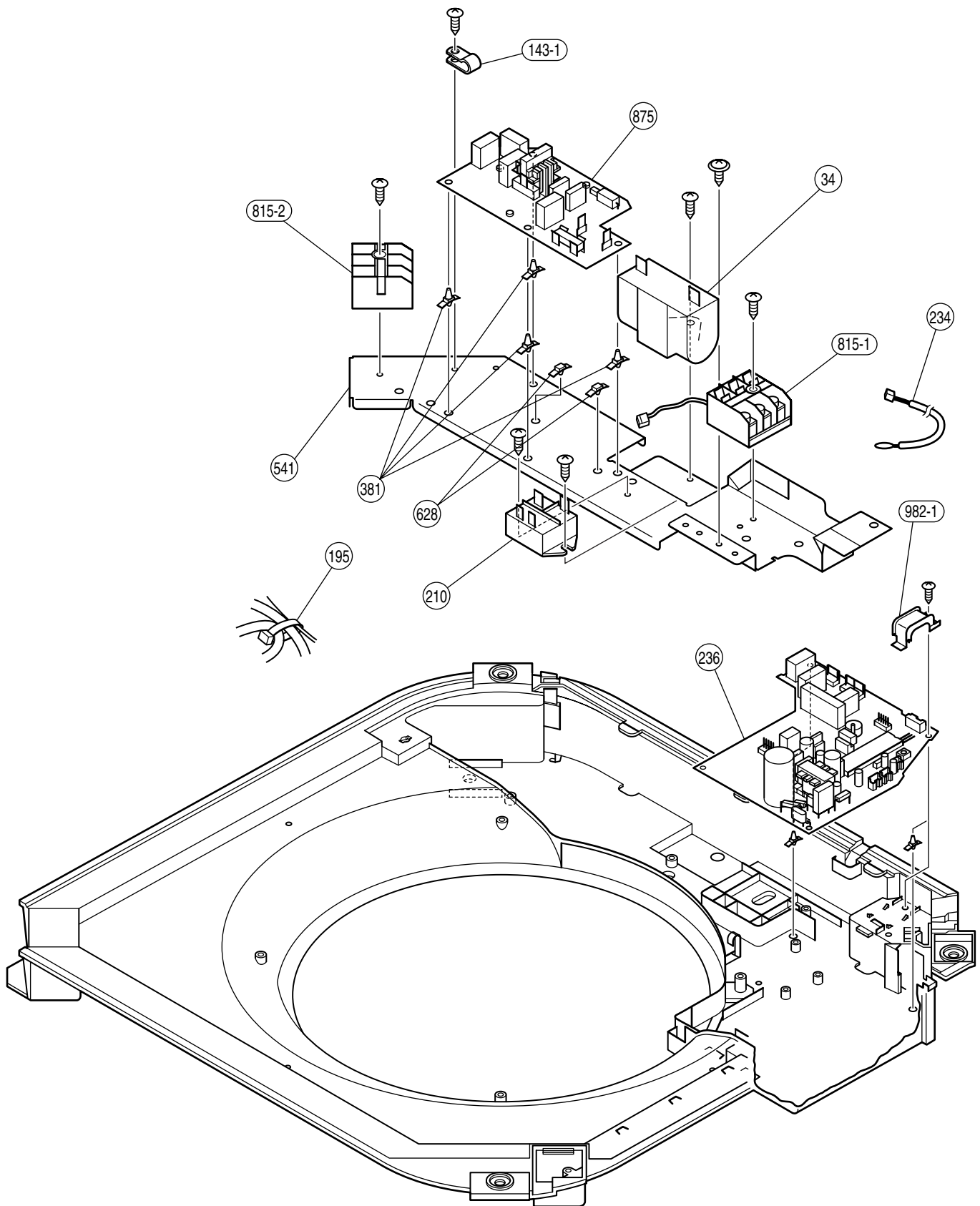


DISASSEMBLY ILLUSTRATION

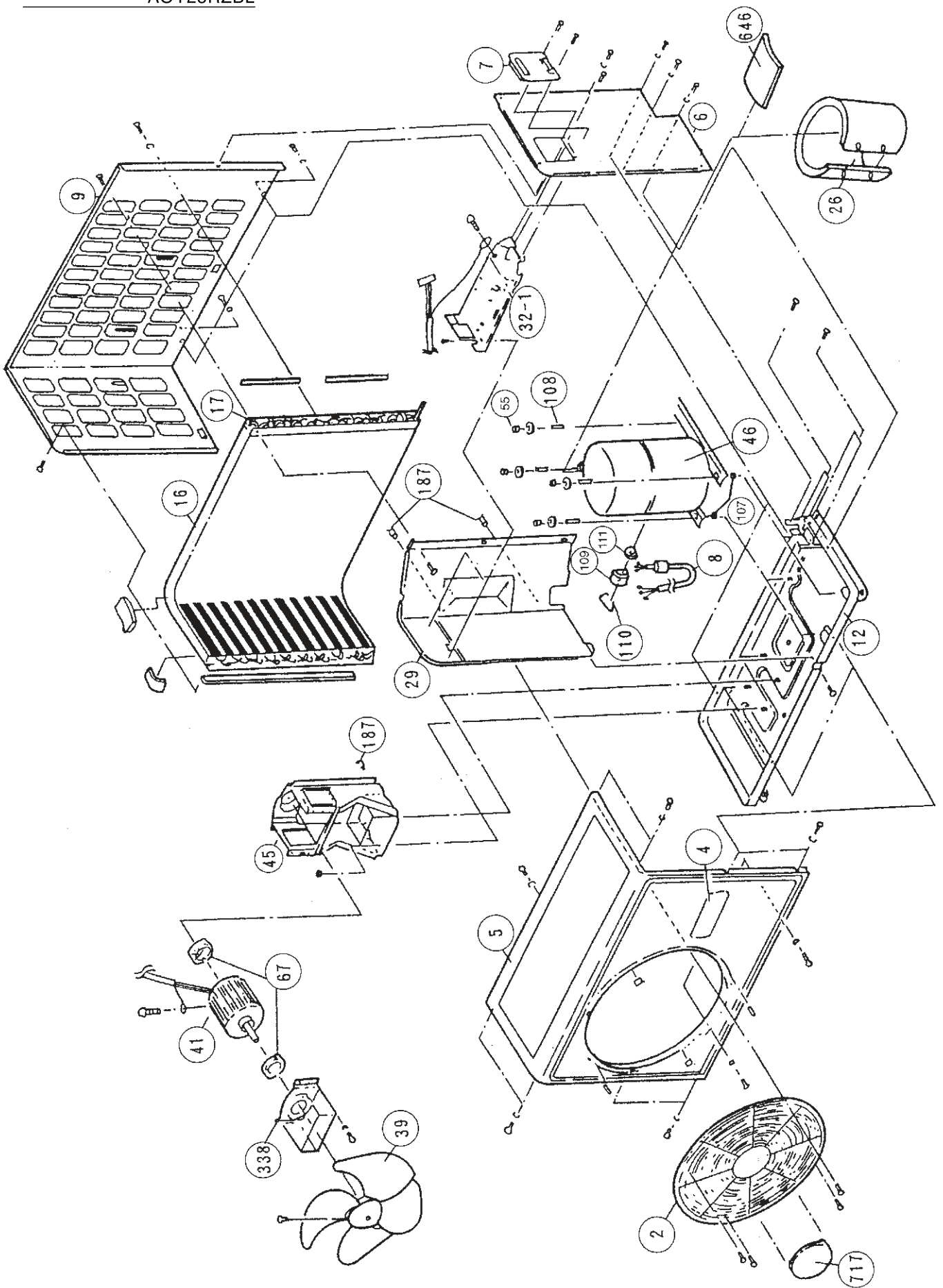
Models : AUY25ALB-W
AUY25RLB-W



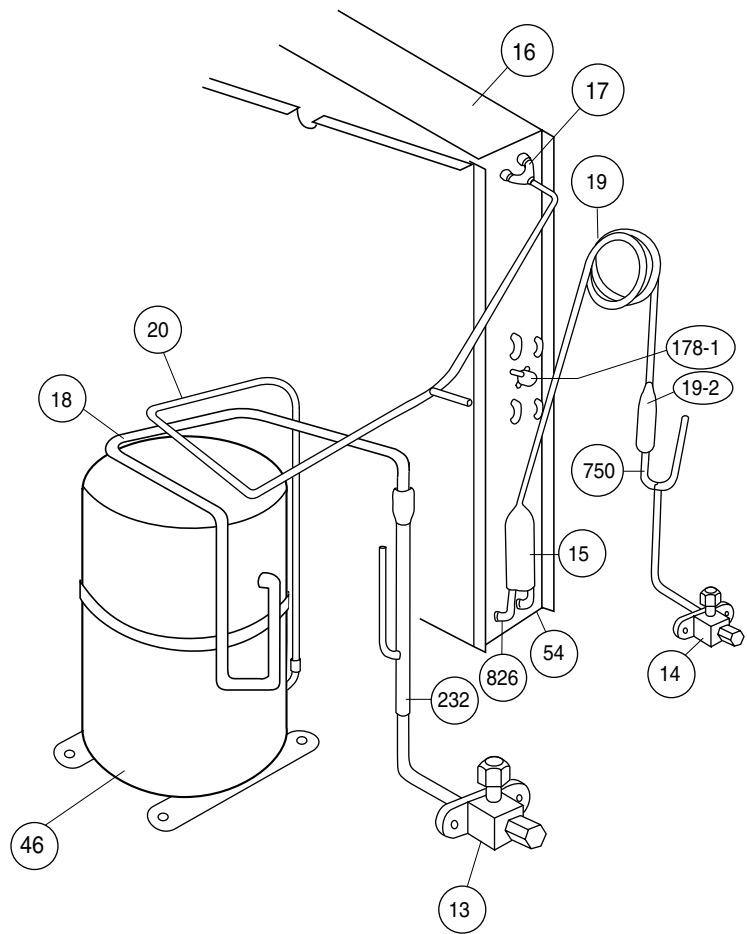
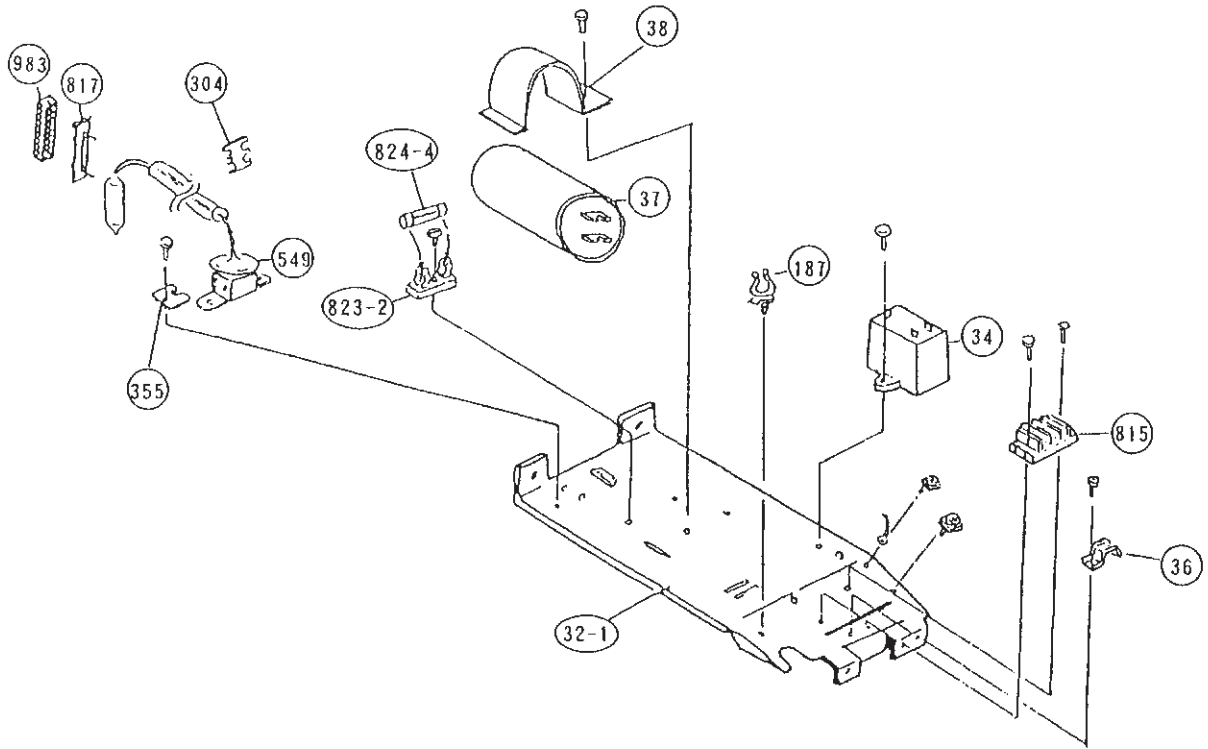


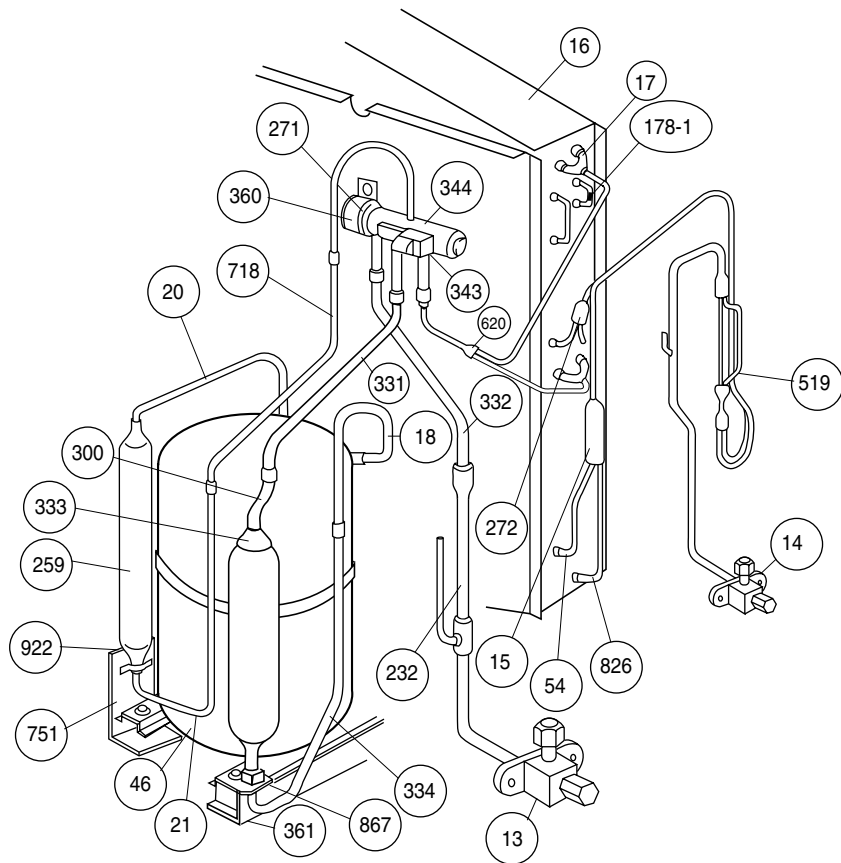
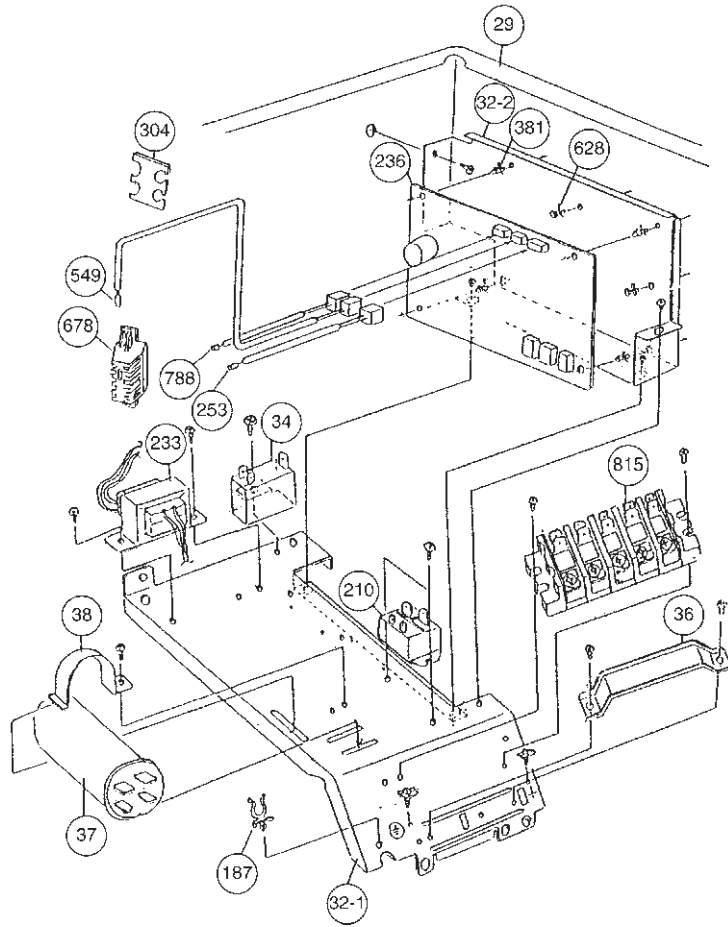


Models : AOY25AZBL
AOY25RZBL



Model : AOY25AZBL





PARTS LIST

When you order parts, please make a photocopy of this page and fill the number of the parts in the "Order" column.

INDOOR UNIT

Ref. No.	Description	Part No.		Order Q'ty	Ref. No.	Description	Part No.		Order Q'ty
		AUY25ALB-W	AUY25RLB-W				AUY25ALB-W	AUY25RLB-W	
34	Capacitor (Fan Motor)	9703306068	9703306068		472-3	Grille Reinforcement · T-C	9362740005	9362740005	
47-1	Rubber (Discha. Pipe)	313194159807	313194159807		472-4	Grille Reinforcement · T-D	9362741002	9362741002	
61	Decoration Plate	9362787000	9362787000		472-5	Grille Reinforcement · T-E	9362742009	9362742009	
67	Rubber (Vibration Proof)	9362783002	9362783002		474	Turbo Fan Assy	9362803014	9362803014	
71	Grille Hook Holder	9362782005	9362782005		476-2	Special Washer	9362756006	9362756006	
93	Filter	9362766005	9362766005		477	Bellmouth (B)	9362774000	9362774000	
117-3	Hex. Nut w/Spring washer	301721180114	301721180114		479	Float Switch	9703285004	9703285004	
122	Louver Support Holder	9362799003	9362799003		482	Pump Unit	9703125010	9703125010	
127	Drain Hose	9362784009	9362784009		484	Hook	9362736008	9362736008	
138	Separate Wall	9362737005	9362737005		487	Grille Hinge Wire	9362754002	9362754002	
143-1	Clamp NK-3N	313361274700	313361274700		488	Drain Pan Plug	313005174654	313005174654	
143-3	Clamp NK-6N	9305657001	9305657001		514	Control Box Cover	9362763004	9362763004	
146-1	Evaporator-A Assy	9364700007	9364700007		522	Joint Gear	9362772006	9362772006	
146-2	Evaporator-B Assy	9364701004	9364701004		540	Bypass Pipe-B	9363152005	9363152005	
155	Special Nut M6	9307615016	9307615016		541	Terminal Plate	9363642001	9363642001	
160	Drain Hose Assy	9362804004	9362804004		542	Panel Base	9362759014	9362759014	
164	Fan Motor Assy-IN	9600878019	9600878019		543	Panel Frame Holder	9362761017	9362761017	
168	Cabinet-E	9362735001	9362735001		544	Panel Base Holder	9362760010	9362760010	
184-1	Thermo. Spring-A	313728262708	313728262708		545	Panel Frame	9362758017	9362758017	
187	Clamp No. 1219	313361271706	313361271706		563	Insulation (Inner Box)	9362768009	9362768009	
195	Clamp SKB-100	313361275805	313361275805		564	Bypass Pipe-A Assy	9363151008	9363151008	
196-2	Clamp SKB-150	313035356905	313035356905		565	Evaporator Holder Assy	9362802017	9362802017	
197	Wind Guide Board	9363117004	9363117004		568	Noise Insulation	9363143003	9363143003	
210	Main Relay	9356781007	9356781007		628	Locking Spacer-B	313005446558	313005446558	
223	Control Box	9362762007	9362762007		652-1	Thermistor Holder Pipe	313806262805	313806262805	
226	Motor Gear	9362764001	9362764001		690	Joint-A	9362773003	9362773003	
234	Thermistor Assy-Room	9703299025	9703299025		692	Joint Shaft	9362771009	9362771009	
235	Thermistor Assy-Pipe	9703297014	9703297014		705	Louver	9362769013	9362769013	
236	Controller PCB Assy	9700637103	9700637097		710	Intake Grille	9362767019	9362767019	
240	Remote Control Unit	9703173028	9703173011		735	Distributor Assy	9363154009	9363154009	
244	Pipe Cover	9362748001	9362748001		777-1	Grille Hook-A	9362779012	9362779012	
245	Cable Clamp	313714181904	313714181904		777-2	Grille Hook-B	9362778015	9362778015	
337-1	Reinforcement (Eva.)-A	9362749008	9362749008		798	Pump Hook Bracket	9362753005	9362753005	
337-2	Reinforcement (Eva.)-B	9362750004	9362750004		803	Cabinet-D	9362734004	9362734004	
338	Motor Holder	9362765008	9362765008		814	Cabinet-C	9362733007	9362733007	
381	Locking Spacer	313209391506	313209391506		815-1	Terminal 3P	9306489052	9306489052	
457	Reinforcement (Drain Pan)	9362757003	9362757003		815-2	Terminal 3P	9703345012	9703345012	
460-1	Pump Cover-A	9362775007	9362775007		834-1	Wire Cover-A	9362789004	9362789004	
460-2	Pump Cover-B	9362776004	9362776004		834-2	Wire Cover-B	9362788007	9362788007	
462	Top Cover Plate	9362806015	9362806015		835	Cushion Rubber (Pump)	9362777001	9362777001	
464	Cabinet-A	9362800013	9362800013		847	Louver Supporter	9362770019	9362770019	
465	Cabinet-B	9362801010	9362801010		858	Grille Spring	9362755009	9362755009	
467	Drain Port	9362786003	9362786003		875	Filter PCB Assy	9703292019	9703071010	
468	Special Nut-A (Large)	313005446653	313005446653		876-2	Step Motor	9360307019	9360307019	
469	Special Nut-B (Small)	313005446759	313005446759		897	Coupling Pipe-A Assy	9364451008	9364451008	
472-1	Grille Reinforcement · T-A	9362738002	9362738002		898	Coupling Pipe-B Assy	9363155006	9363155006	
472-2	Grille Reinforcement · T-B	9362739009	9362739009		982-1	Cord Clamp	9356857009	9356857009	

OUTDOOR UNIT

When you order parts, please make a photocopy of this page and fill the number of the parts in the "Order" column.

Ref. No.	Description	Part No.		Order Q'ty	Ref. No.	Description	Part No.		Order Q'ty
		AOY25AZBL	AOY25RZBL				AOY25AZBL	AOY25RZBL	
2	Fan Cover	9350214020	9350214020		210	Main Relay	-	9356781007	
4	Emblem-Rear	9351355005	9351355005		232	Pipe Assy	9300990028	9300990028	
5	Cabinet-A, Painted	9303876015	9303876015		233	Power Transformer	-	9701549016	
6	Cabinet-C, Painted	9353549013	9353549013		236	Controller PCB Assy	-	9701936014	
7	Connector Cover	9358011011	9358011011		253	Thermistor Assy-Pipe	-	9701330010	
8	Wire Assy(Shield)-D	9350215027	9350215027		259	Muffler	-	9350605002	
9	Cabinet-B, Painted	9303874011	9303874011		271	4-Way Valve Rubber	-	313728251908	
12	Base Assy, Painted	9353452016	9353452016		272	Strainer	-	9300590020	
13	3-Way Valve Assy	9357963013	9357963013		300	Suction Pipe-C	-	313986157307	
14	2-Way Valve Assy	9357964010	9357964010		304	Thermostat Fixture-B	313349051500	313349051500	
15	Dryer	9355465007	9300589024		331	Suction Pipe-D	-	313986353502	
16	Condenser Assy	9353455017	9353455024		332	Suction Pipe-E	-	9350600007	
17	"U" Pipe-Y	313728127102	313728127102		333	Accumulator	-	313986117201	
18	Suction Pipe	9355617000	9350598007		334	Suction Pipe-B	-	9350599004	
19	Capillary Tube	9355464000	-		338	Motor Fixture	313029297108	313029297108	
19-2	Joint Pipe (Capillary)	9354268005	-		343	Solenoid Coil	-	9359616108	
20	Discharge Pipe	9360636003	9350601004		344	4-Way Valve	-	9300604017	
21	Discharge Pipe-B	-	9350602001		355	Switch Bracket	313986353607	-	
26	Compressor Cover	9354036000	9354036000		360	4-Way Valve Band	-	313986251802	
29	Separate Wall	313986033213	9302475011		361	Accumulator Support	-	313986353804	
32-1	Control Box Metal-A	9353595003	9357137001		381	Locking Spacer	-	313209391506	
32-2	Control Box Metal-B	-	9357138008		519	Check Valve Assy	-	9355139007	
34	Capacitor (Fan Motor)	9357965024	9357965024		549	Thermostat Assy-Outer	9352553004	9357328027	
36	Cord Holder Metal	9356934007	9356934007		620	Inlet Pipe (Cond.) Assy	-	9300559010	
37	Running Capacitor	9703107016	9703107016		628	Locking Spacer-B	-	313005446658	
38	Capacitor Clamp	9351770013	9351770013		646	Compressor Cover-B	313986355101	313986355101	
39	Propeller Fan Assy	9300855013	9300855013		678	Bracket (Thermistor)	-	313557406106	
41	Fan Motor Assy-Out	9600738030	9600738054		717	Center Plate	9350216017	9350216017	
45	Bracket (Motor) Assy	313029311100	313029311100		718	Discharge Pipe-C	-	9350603008	
46	Compressor Assy	9360509017	9360509017		750	Pipe-A Assy	9301003017	-	
54	Condensing Pipe	9300557016	9300557016		751	Bracket (Muffler) Assy	-	9350612000	
55	Special Nut M8 (For Comp.)	313252257701	313252257701		788	Thermistor-Discharge	-	9358337011	
67	Rubber (Vibration-proof)	313659068604	313659068604		815	Terminal-5P	9356497021	9356497021	
107	Rubber Seat-A (For Comp.)	313093081402	313093081402		817	Thermostat Fixture	9352164019	-	
108	Sleeve-A (For Comp.)	313093081706	313093081706		823-2	Fuse Holder	0500063024	-	
109	Terminal Cover (For Comp.)	313202059600	313202059600		824-4	Fuse	0600222529	-	
110	Lock Wire	313202059706	313202059706		826	Condensing Pipe-B	9300558013	9300558013	
111	Terminal Packing (For Comp.)	313202059807	313202059807		867	Accumulator Holder Rubber	-	9354022010	
178-1	Capillary Holder Rubber	313414274807	313414274807		922	Muffler Rubber	-	9354014008	
187	Clamp No.1219	313361271706	313361271706		983	Thermostat Cover	9358274002	-	

[INDOOR UNIT]
CONTROLLER PCB ASSEMBLY (Ref. No.236)

When you order parts, please make a photocopy of this page and fill the number of the parts in the "Order" column.
():Reverse cycle model

Ref. No.	Description	Part No.	Order Q'ty	Ref. No.	Description	Part No.	Order Q'ty
IC1	IC μ PD78014HCW-024	9700856016		R43	Res. 10k Ω \pm 1%	0200279497	
IC2	IC NJM7812FA	0100462104		R45	Res. 49.9k Ω \pm 1%	0200279824	
IC3	IC NJM7805FA	0100462081		R63	Res. 15.4k Ω \pm 1%	0200279565	
IC4~6	Xstr Array μ PA2003GR	0100028041		R64	Res. 28k Ω \pm 1%	0201114445	
IC7	IC BR93LC46RF-E2	0100295016		C5	Cap. Elec. 450V 100 μ F	0300256060	
IC8	IC PST600CMTR	0101461120		C6	Cap. Plastic 4700 μ F	0300269091	
IC9	IC Photocoupler TLP621(D4)-GB	0000117074		C7	Cap. Plastic 50V 0.047 μ F	0300169339	
(IC10)	IC H12002	9701384020		C8	Cap. Elec. 25V 100 μ F	0301197560	
IC11	IC BA10358FE2	0101846071		C9	Cap. Elec. 25V 1000 μ F	0301196495	
Q1	Xstr 2SC4236	0000164047		C10,11,33,36	Cap. Elec. 25V 10 μ F	0301192312	
Q2	Xstr 2SC1815	000002011		C12	Cap. Elec. 25V 1000 μ F	0301158264	
Q3,4	Xstr DTC124EKA	0000936033		C13,15,34,37,39,44,45,	Cap. Ceramic 50v 0.1 μ F	0300311752	
Q5,6	Xstr 2SC2712	0000781053		C14	Cap. Elec. 25V 100 μ F	0301192350	
D1	Diode D3SB60	0000689045		C16-31,38,40,46,49,(CJ1),CJ2	Cap. Ceramic 50V 0.01 μ F	0300311738	
D2,4,7	Diode D1FL20U	0000746519		C32,35,50-53	Cap. Ceramic 50V 1000 μ F	0300308509	
D3	Diode MTZJ5.1B	0000852166		C54	Cap. Ceramic 0.01 μ F	0300209127	
D5	Diode 1SR139-600	0000353120		X1	Ceramic Resonator EF0EC8384T4	9701261017	
D6	Diode D2FL20U	0000906500		L2~4	EMI Filter EXCEMT103DT	0400406396	
D8	Diode D1F60	0000208024		VA1,(3)	Varistor TNR12G471K	0000038010	
D9,10	Diode DA226U	0000625036		SSR1	Relay G3M-202PL-UTU	9701653010	
D12	Diode DAN202K	0000684019		K4	Relay JQ1-12V	9701316014	
R1	Res. Cement 5W 3.3 Ω \pm 10%	0200153148		CR1	CR Absorber RPEL-121204-C	9701125012	
R2	Res. Metal 2W 1.5 Ω \pm 5%	0201107119		T1	Switching Transformer ETS28AS118AH	9702727017	
R3	Res. 100 Ω \pm 5%	0200212500		SW1,4	Switch, Slide DSS803	9701392018	
R4	Res. Carbon 220k Ω \pm 5%	0200111353		SW2	Switch, Rotary DRS4016-5	9701694013	
R5	Res. Metal 2W 47k Ω \pm 5%	0201107652		CN1	Plug, PCB 5-1123724-2	0501321574	
R6	Res. 100 Ω \pm 5%	0200731506		(CN1)	Plug, PCB 5-1123724-3	0501321635	
R7	Res. 330 Ω \pm 5%	0200708621		CN3	Plug, PCB 53406-9910	0500951048	
R8,10,13-17,21-24,29-32,37,39,48,50,52,55,59-61,66,68,70	Res. 10k Ω \pm 5%	0200213019		CN4	Plug, PCB 2-1123724-2	0501321529	
R9,47,65	Res. 390 Ω \pm 5%	0200212647		CN5	Plug, PCB 1-1123724-3	0501321451	
R11	Res. Metal 1W 56k Ω \pm 5%	0201106662		CN6	Plug, PCB 3-1123724-2	0501321536	
R12,18-20,25-28,33-36,38,42,44,46,49,51,58,67,69	Res. 1k Ω \pm 5%	0200212746		CN7	Plug, PCB B2B-XAKK-1-A	0501045227	
CJ1	Res. 0 Ω	0200212012		CN8	Plug, PCB B2B-XASK-1-A	0501045012	
JM9	Res. 0 Ω	0200230016		CN9	Plug, PCB B5P-SHF-1AA	0500006069	
R40,41,62,71,72	Res. 4.7k Ω \pm 5%	0200212906		CN10	Plug, PCB B5B-XASK-1-A	0501045043	
				CN12	Plug, PCB B3B-XASK-1-A	0501045029	
				CN14	Plug, PCB B4B-XH-AM	0500005314	
				CN15	Plug, PCB B3B-XARK-1-A	0501045319	
				CN17	Plug, PCB B3B-XAKK-1-A	0501045357	

[INDOOR UNIT]
FILTER PCB ASSEMBLY (Ref. No.875)

Ref. No.	Description	Part No.	Order Q'ty	Ref. No.	Description	Part No.	Order Q'ty
VA101,102	Varistor TNR12G471K	0000038010		C105,106	Cap. Plastic 0.022 μ F	0301052098	
SA101	Arrester DSA-362-MA-05	0600168032		LF101	EMI Filter ELF17N015A	0400197119	
TM101,102	Plug Contact	0500536016		E101	Wire w/Terminal GRN L=100	9702313012	
F101	Fuse 2183.15	0600285210		W103,104	Wire #18 2P	9703251016	
C101,102	Cap. Plastic 0.22 μ F	0300304099		FH1,2	Fuse Holder PFC 5000-0502	0500158072	



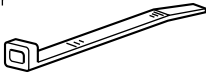




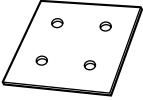

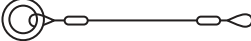
When you order parts, please make a photocopy of this page
and fill the number of the parts in the "Order" column.

[OUTDOOR UNIT] CONTROLLER PCB ASSEMBLY (Ref. No.236)





Ref. No.	Description	Part No.	Order Qty	Ref. No.	Description	Part No.	Order Qty
IC1	IC μ PD78081CU-011	9701721016		C9-11,14-16	Cap. Ceramic 50V 0.01 μ F	0300013113	
IC2	IC HU2001	9701651016		30			
IC3	IC PST600D-2-TP	0101461113		C17	Cap. Elec. 25V 100 μ F	0300051375	
IC4	IC NJM7805FA	0100462081		C20,23,26,35	Cap. Ceramic 50V 1000 μ F	0300011096	
IC5,6	IC BA12003	0101650012		C33	Cap. Elec. 25V 2200 μ F	0300915417	
RC1	RC Module ARCL14FS103J102J103M	0200301020		X1	Ceramic Resonator EF0EC5004T4Z	9701261024	
Q1	Xstr 2SD880	0000001014		K1~6	Relay JQ1-12V	9701316014	
Q2,3	Xstr DTC124ES	0000517010		CR1~3	CR Absorber RPEL-121204-C	9701125012	
D1	Diode D2SB20	0000599023		VA1,4	Varistor TNR12G471K	0000038010	
D2	Diode MTZJ15C	0000852203		SA1	Arraster DSA-362MA-05	0600168032	
D6	Diode 1SS133	0000572019		L1	EMI Filter SU16VF-15030	0400134114	
D3~5	Diode 1SR139-400	0000353137		F1	Fuse BET 3.15A-250V	0600222512	
LED1,2	Diode SLR-325VC	0000813259		FH1,2	Fuse Holder PFC5000-0502	0500158072	
R1,2	Res. Carbon 5.6k Ω \pm 5%	0200984192		HT1	Heat Sink PUG26-25	9701428014	
R4,26	Res. Carbon 4.7k Ω \pm 5%	0200994178		CN1	Plug, PCB 53406-9110	0500951086	
R3,6,10~12,14 16,18,20,24	Res. Carbon 1k Ω \pm 5%	0200994017		CN2	Plug, PCB B2P3-VH-B-R	0500011766	
R5,7~9,13 21~23,25	Res. Carbon 10k Ω \pm 5%	0200994253		CN3	Plug, PCB B2B-XH-AM	0500005321	
R15,17	Res. Metal 14k Ω \pm 1%	0201028612		CN4,6	Plug, PCB 53331-0210	0501033019	
R19	Res. Metal 6.65k Ω \pm 1%	0201028766		CN5	Plug, PCB B4P7-VH-B	0500011742	
C1,4	Cap. Plastic 0.1 μ F	0300894835		CN7	Plug, PCB B4P7-VH-B-R	0500011797	
C2,3	Cap. Plastic 4700pF	0300727546		CN8	Plug, PCB 179844-2	0501121020	
C5	Cap. Elec. 50V 2200 μ F	0301206026		CN9	Plug, PCB 179844-1	0501121013	
C6,7,21,24,27	Cap. Elec. 250V 10 μ F	0300004258		CN10	Plug, PCB B4P-SHF-1AA	0500006038	
C8,18,19,22,25 28,29,34,36	Cap. Ceramic 0.1 μ F	0300988251		CN11	Plug, PCB B2P-VH-B	0500011124	
				CN12	Plug, PCB B2P-VH-B-C	0500011568	
				CN13	Plug, PCB B2P-VH-B-R	0500011148	
				CN15	Plug, PCB B2B-XASK-1-A	0501045012	
				E	Wire w/Tarminal L=210 GRN	9701325016	

STANDARD ACCESSORIES

INDOOR UNIT ACCESSORIES

Name and Shape	Part No.
Coupler heat insulation 	9350716029 } 1 each 9352766015 }
Remote control unit cord clamp 	313714181904
Binder 	313035356905 (Large)
	313361275805 (Small)
Screw 	(A) 301141134166 For installing the mounting bracket
	(B) 301141153027 For installing the cord clamp
Special nut A (large flange) 	313005446653
Special nut B (small flange) 	313005446759
Remote control unit 	(Cooling model) 9703173028
	(Cooling & Heating model) 9703173011
Template 	9363173000
Blower cover insulation 	9363265002
Hook wire 	9363168006

OUTDOOR UNIT ACCESSORIES

Name and Shape	AOY25AZBL	AOY25RZBL
Hexagon wrench 	9351228019	9351228019
Pipe (drain) 	—	313728031005
Flexible tube 	—	313013042915
Cap (drain) 	—	313166024302