



SPLIT TYPE ROOM AIR CONDITIONER

WALL MOUNTED type

SERVICE MANUAL

Models	Indoor unit	Outdoor unit
	RSW-17HB	ROW-17HB

C O N T E N T S

SPECIFICATIONS.....	1
DIMENSIONS.....	2
REFRIGERANT SYSTEM DIAGRAM.....	3
CIRCUIT DIAGRAM.....	4
INDOOR RINTED CIRCUIT BOARD CIRCUIT DIAGRAM.....	5
DISASSEMBLY ILLUSTRATION.....	6
PARTS LIST.....	11
STANDARD ACCESSORIES.....	13

S P E C I F I C A T I O N S

INDOOR UNIT		RSW-17HB
OUTDOOR UNIT		ROW-17HB
COOLING CAPACITY	(kW)	4.70 - 4.80
HEATING CAPACITY	(kW)	5.00 - 5.15

ELECTRICAL DATA

POWER SOURCE	(V)	220 - 240
FREQUENCY	(Hz)	50
RUNNING CURRENT	(A)	
	COOLING	7.9 - 7.6
	HEATING	8.6 - 8.2
INPUT WATTS	(kW)	
	COOLING	1.70 - 1.78
	HEATING	1.85 - 1.92
E.E.R.	(kW/kW)	
	COOLING	2.77 - 2.70
	HEATING	2.70 - 2.68
MOISTURE REMOVAL	(R/hr)	2.1
AIR CIRCULATION-Hi	(m ³ /hr)	560

COMPRESSOR

TYPE	Hermetic type, Permanent split condenser, 2 pole, Single phase, Induction motor, Rotary
CODE	2JS318D5BA02

FAN MOTOR

INDOOR TYPE		MFA-17AT
POWER SOURCE	(W)	220 - 240
FAN SPEED	HI-SPEED	(r.p.m.) 1,300
	MED-SPEED	(r.p.m.) 1,210
	LO-SPEED	(r.p.m.) 1,110
OUTDOOR TYPE		MFB-247FBT
POWER SOURCE	(W)	220 - 240
FAN SPEED	(r.p.m.)	735

DIMENSIONS

INDOOR	H x W x D	(mm)	285 x 900 x 172
OUTDOOR	H x W x D	(mm)	643 x 840 x 336

WEIGHT

INDOOR	GROSS / NET	(mm)	13 / 10
OUTDOOR	GROSS / NET	(mm)	67 / 59

REFRIGERANT CHARGE (R-22)

PIPE LENGTH	5 m (16 ft)	7 m (23 ft)	10 m (33 ft)	15 m (49 ft)	20 m (66 ft)
FULL CHARGE AMOUNT	1,500 g (52.9 oz)	1,520 g (52.6 oz)	1,550 g (54.6 oz)	1,600 g (56.4 oz)	1,650 g (58.2 oz)

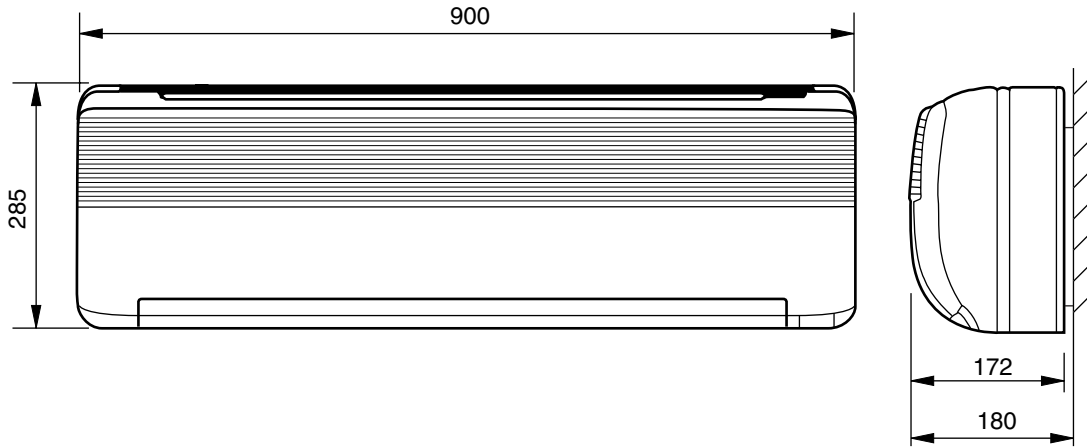
Note : Between 5 m and 20 m, when using a connection pipe other than that in the table, charge additional refrigerant with 0.4 oz (10 g) / 3.3 ft (1 m) for as the criteria.

DIMENSIONS

INDOOR UNIT

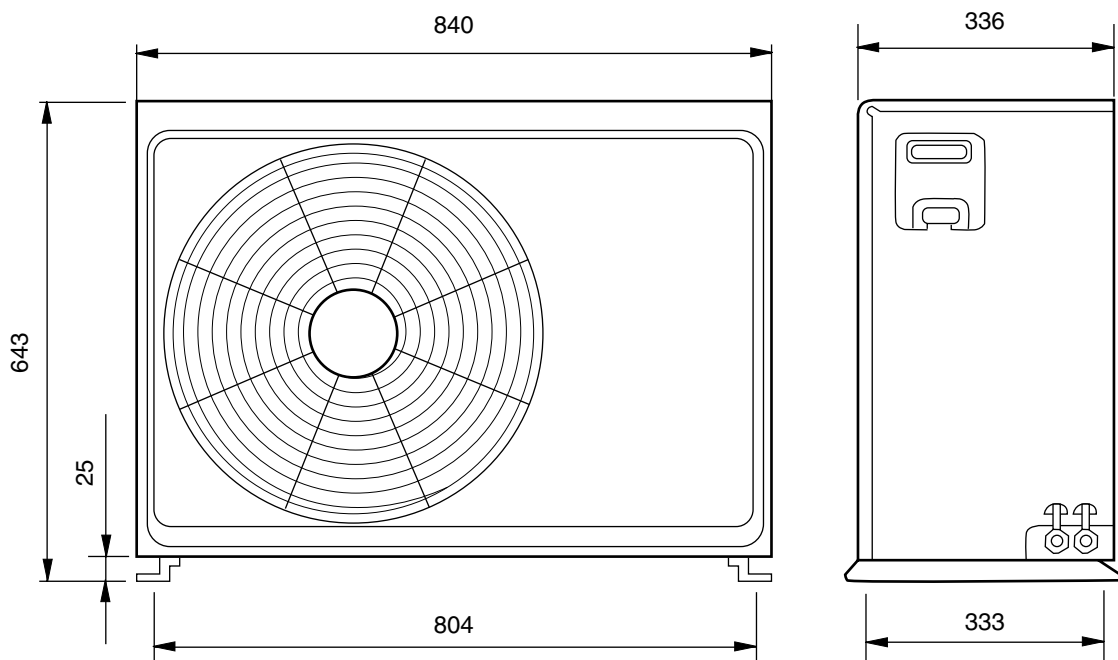
(unit : mm)

Model : RSW-17HB



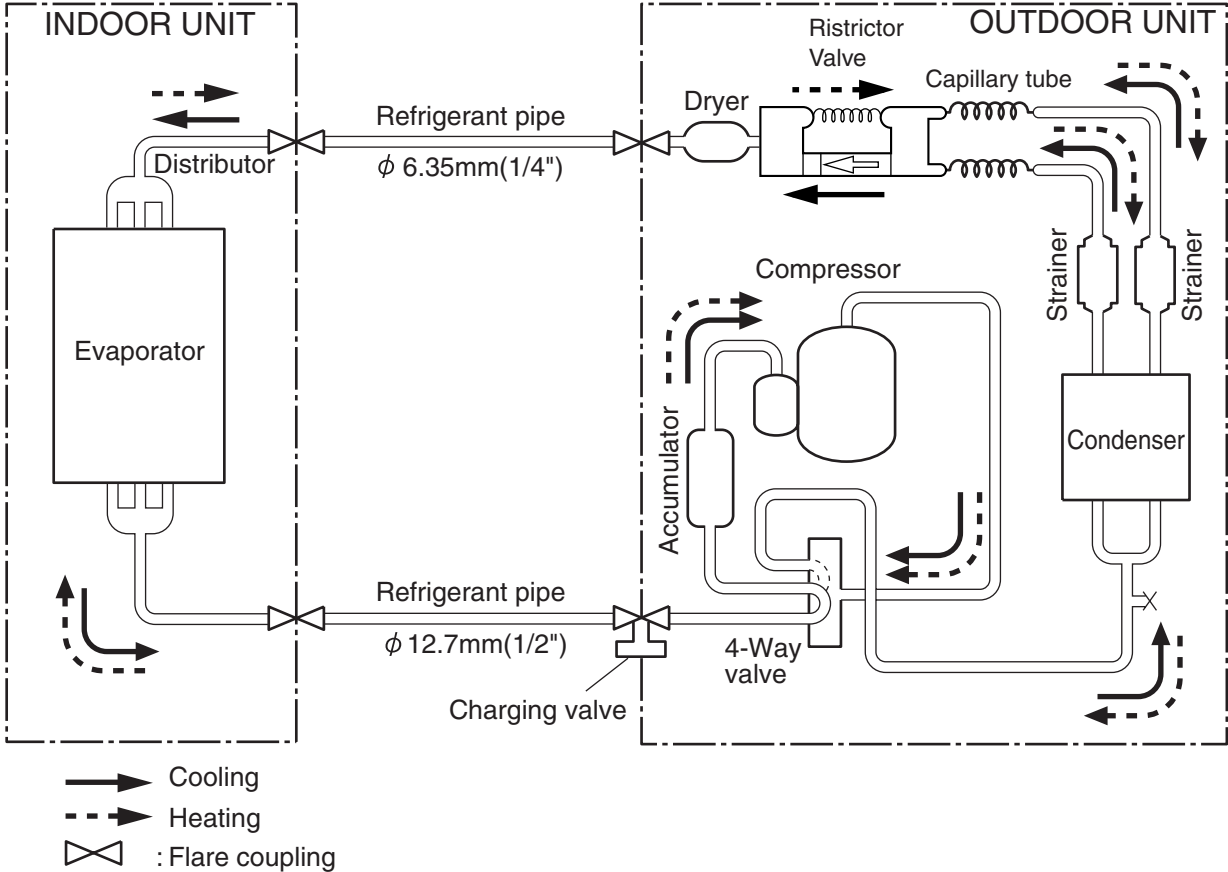
OUTDOOR UNIT

Model : ROW-17HB



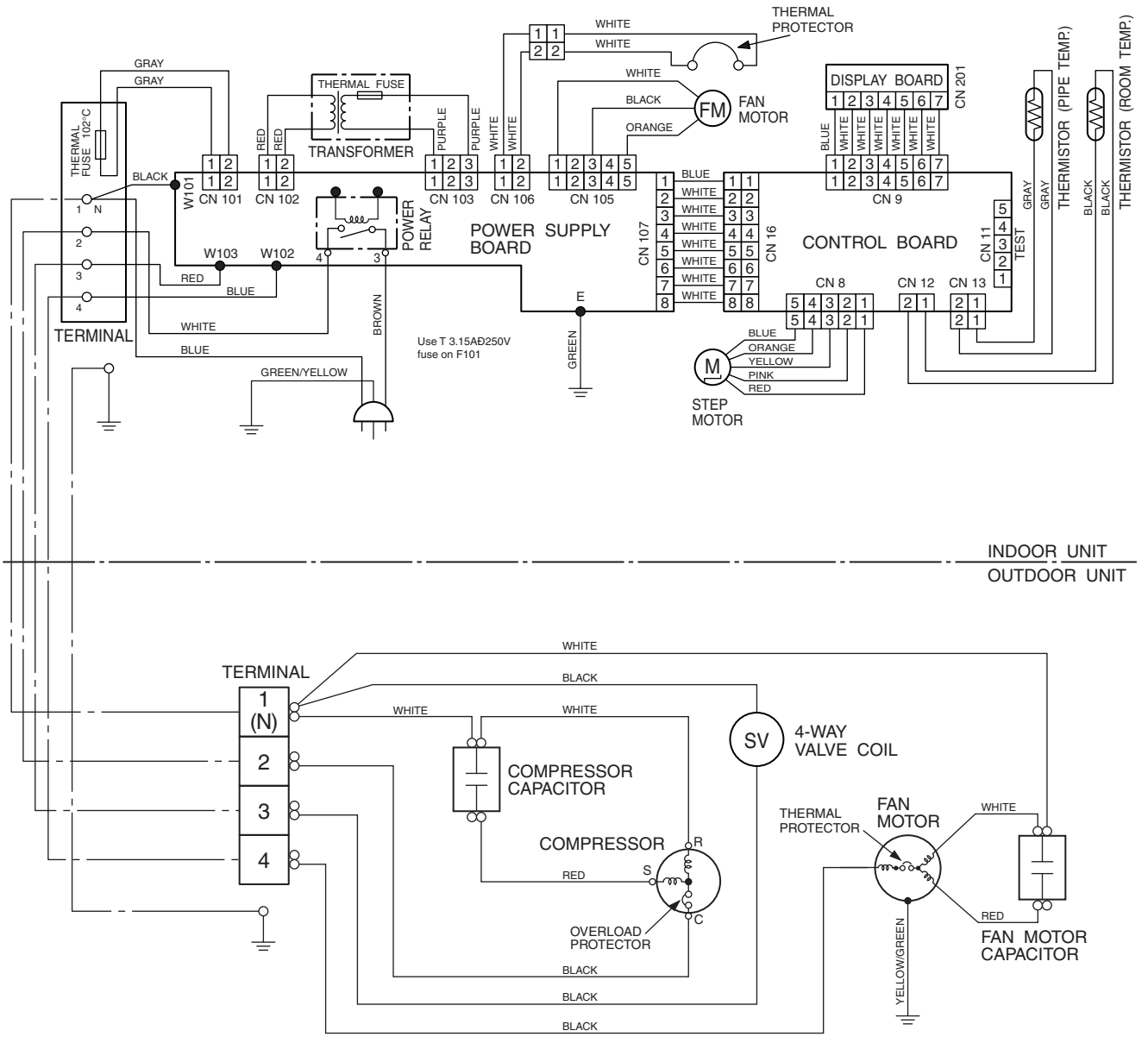
REFRIGERANT SYSTEM DIAGRAM

Models : RSW-17HB / ROW-17HB



CIRCUIT DIAGRAM

Models : RSW-17HB / ROW-17HB

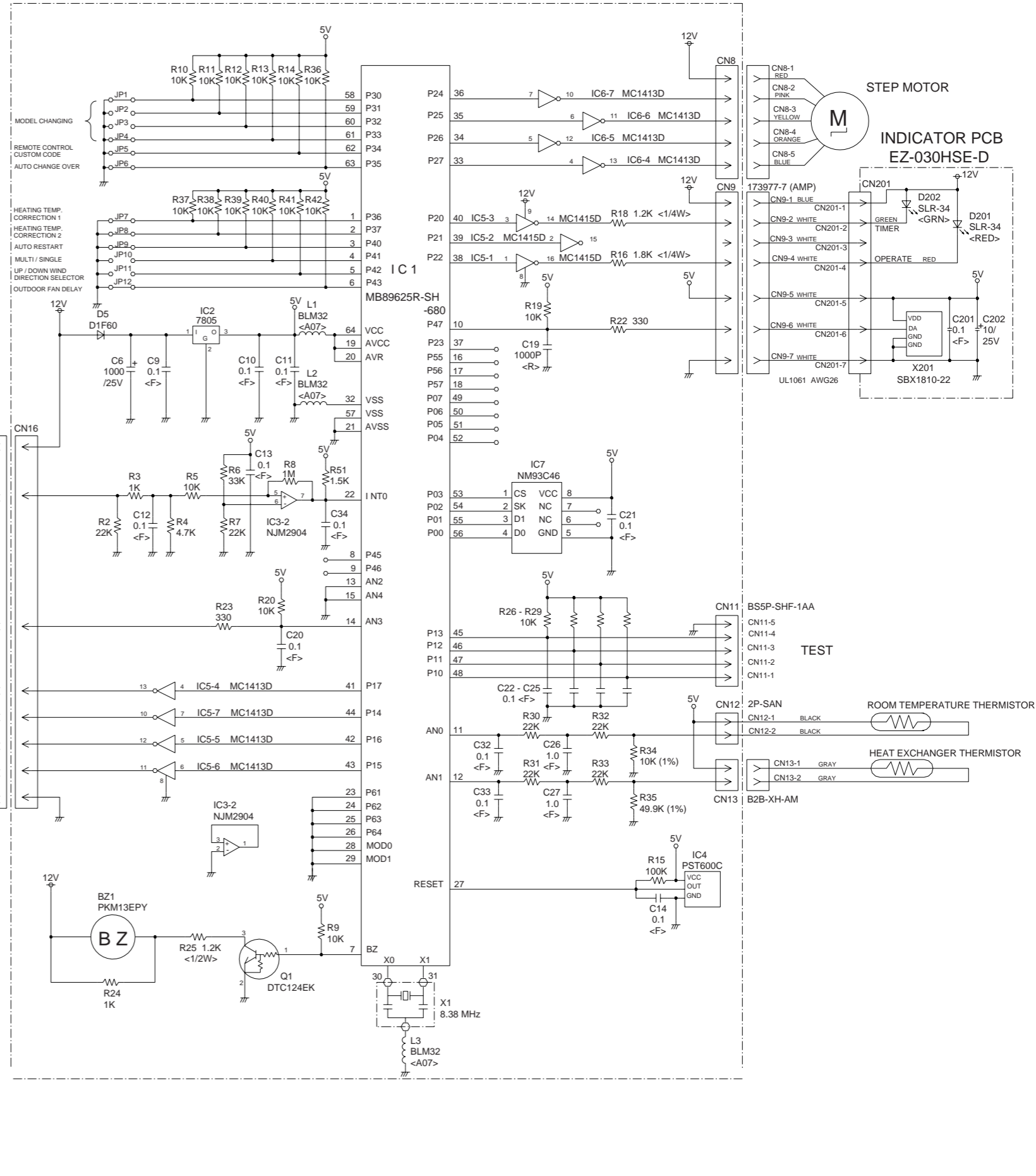
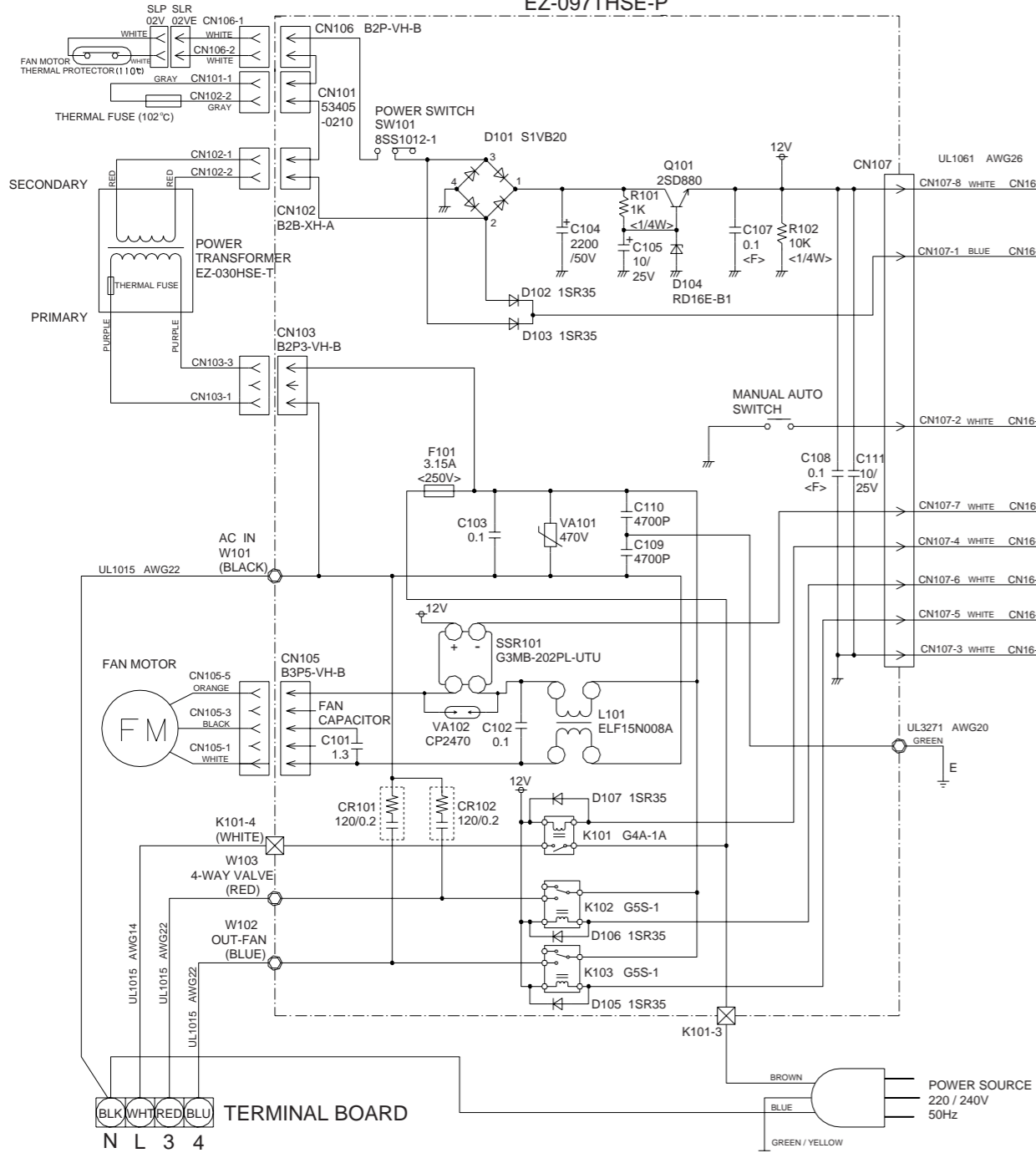


INDOOR PRINTED CIRCUIT BOARD CIRCUIT DIAGRAM

Model : RSW-17HB

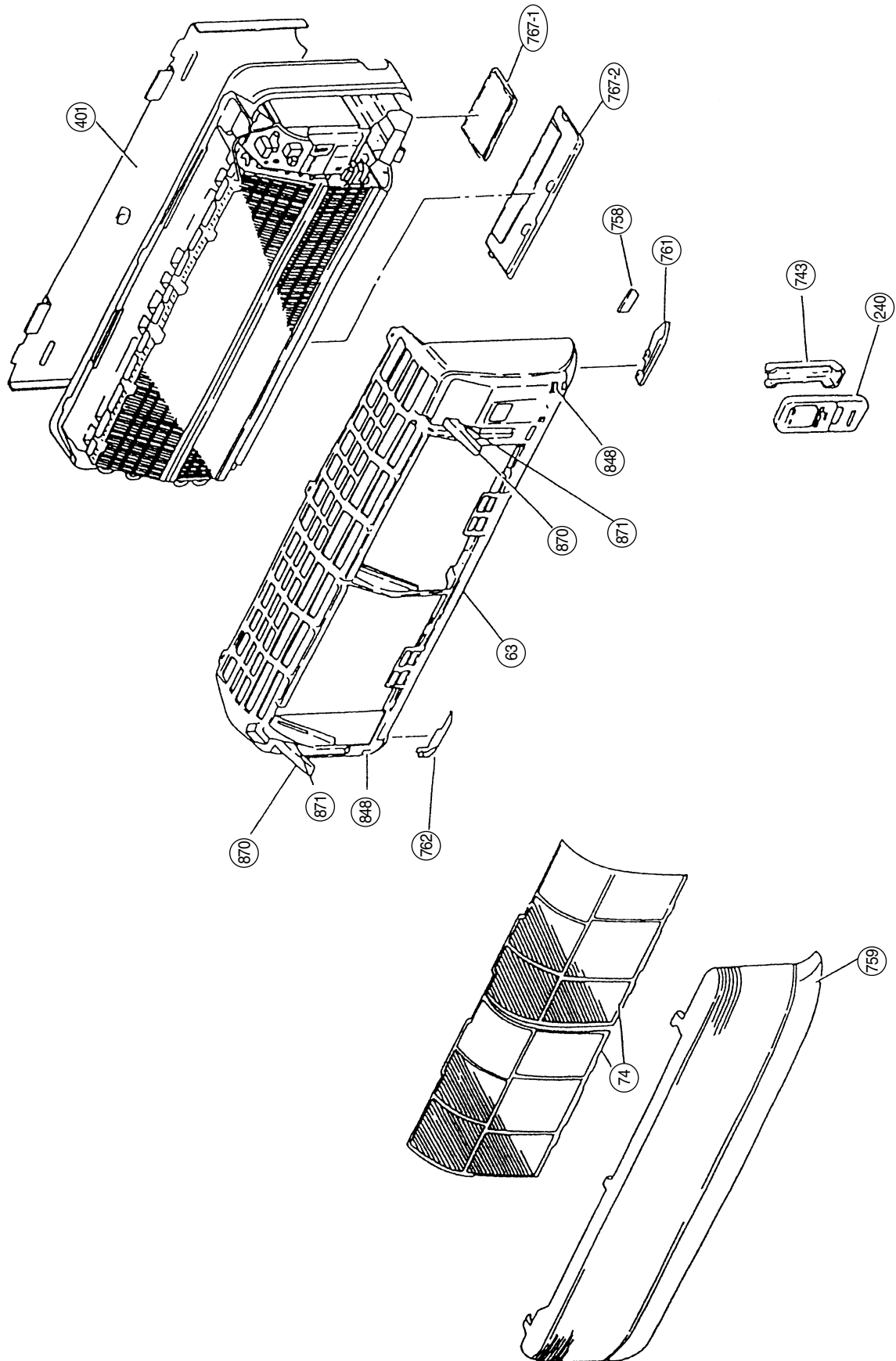
CONTROLLER PCB ASSEMBLY (MAIN PCB) EZ-0960HSE-C (F)

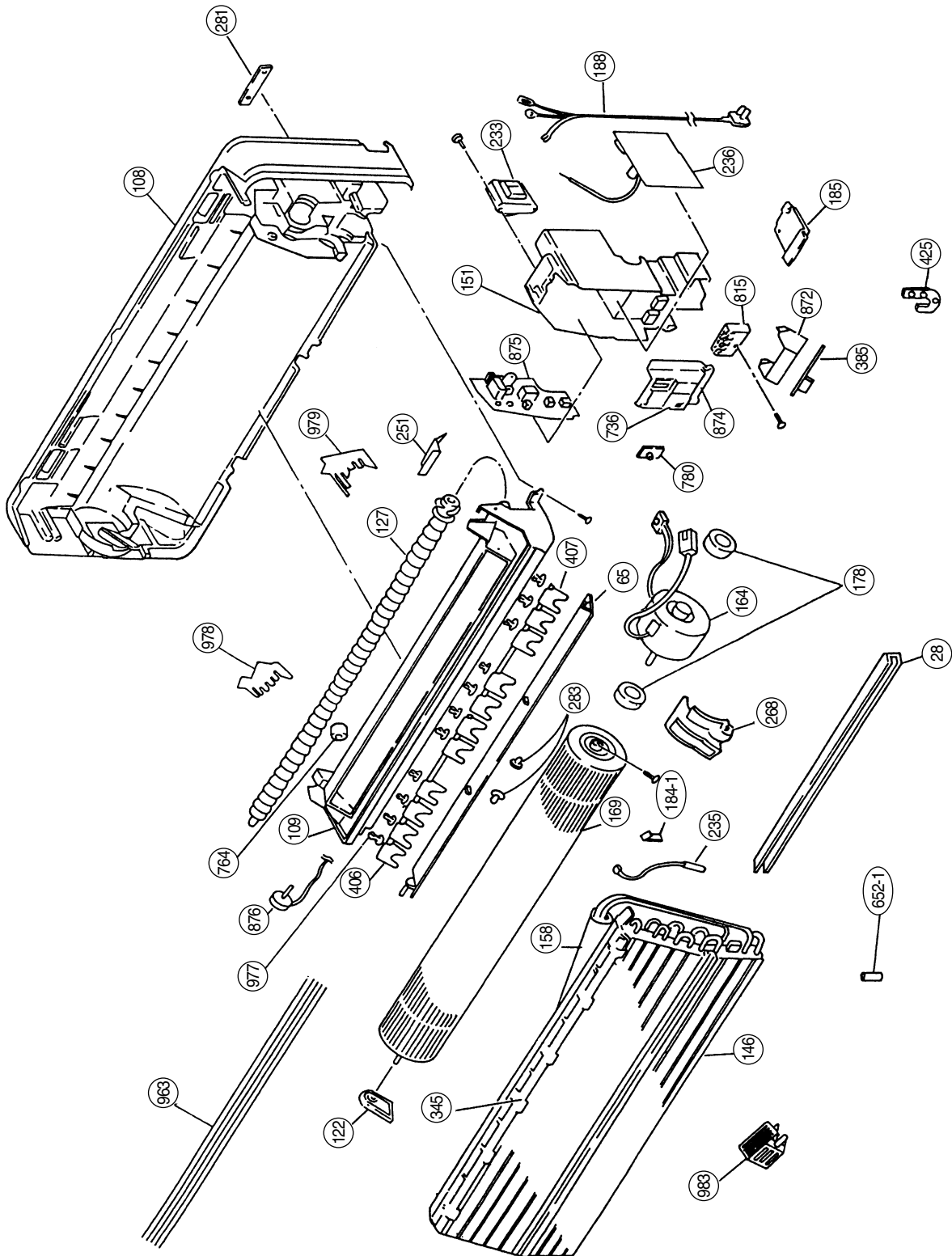
POWER SUPPLY PCB EZ-097THSE-P



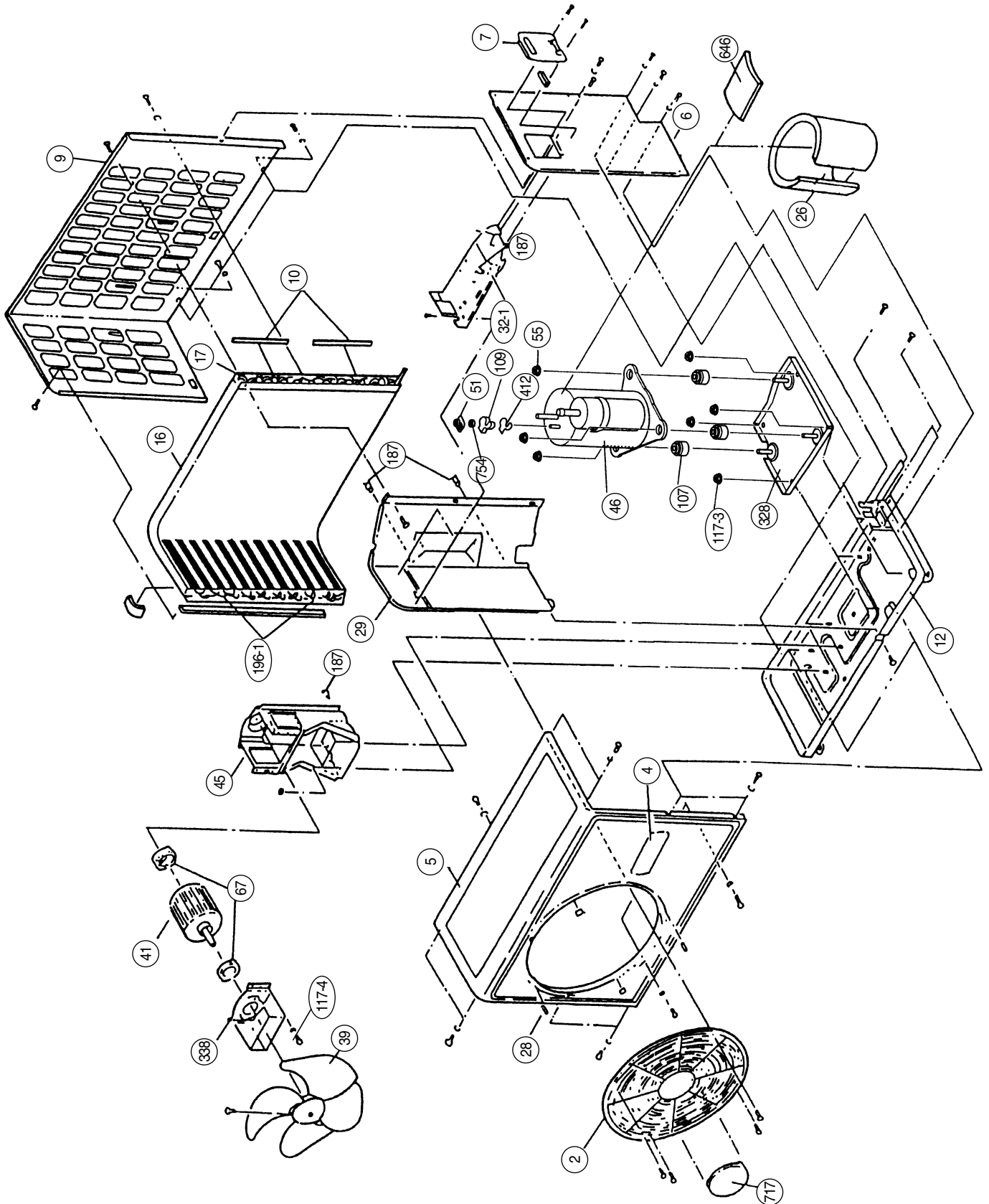
DISASSEMBLY ILLUSTRATION

Model : RSW-17HB

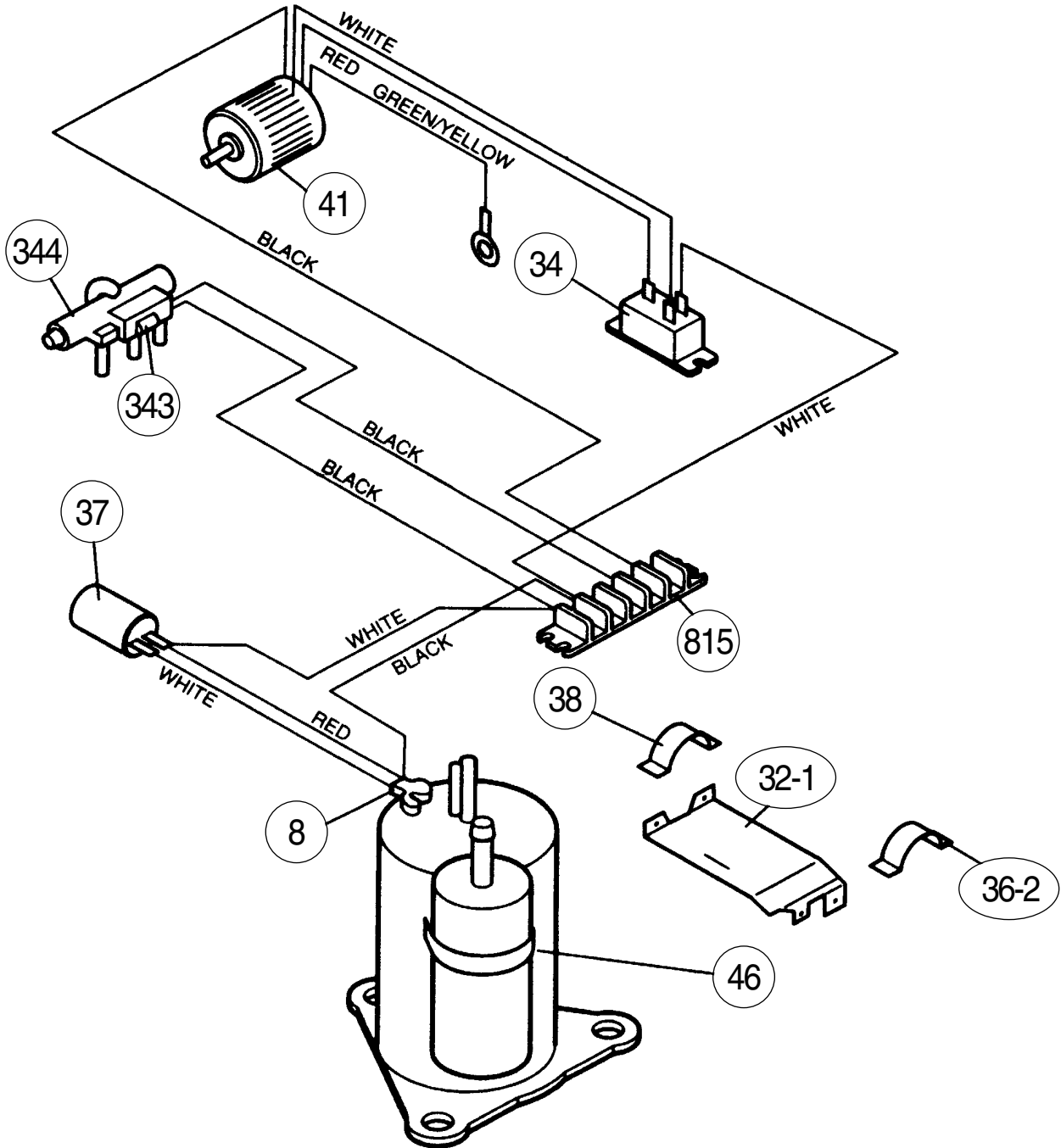


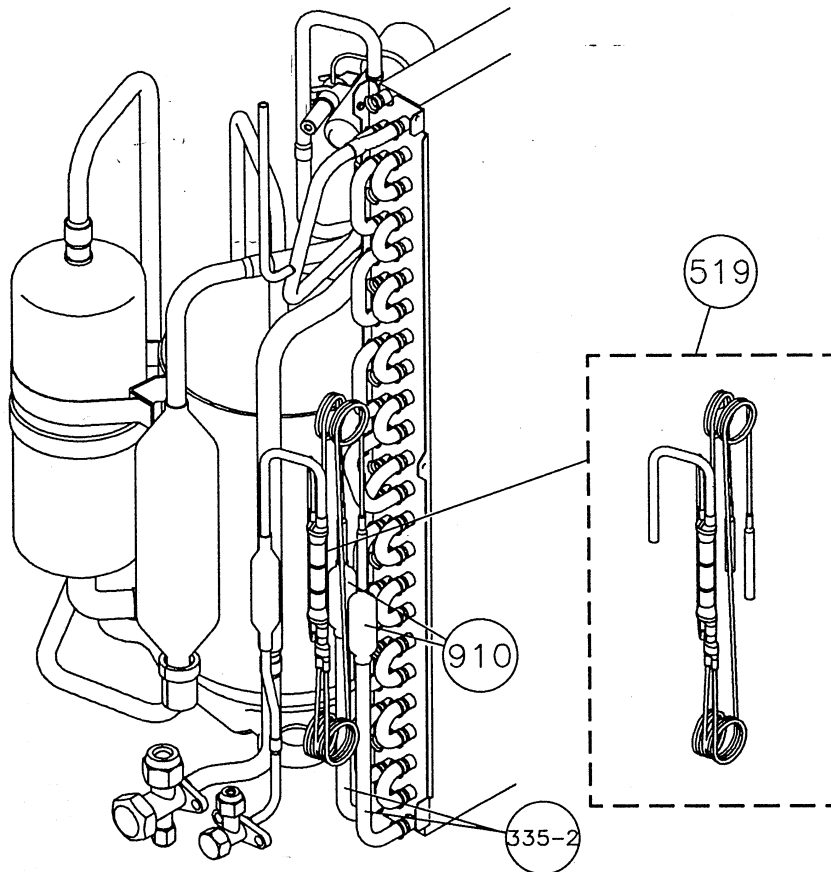
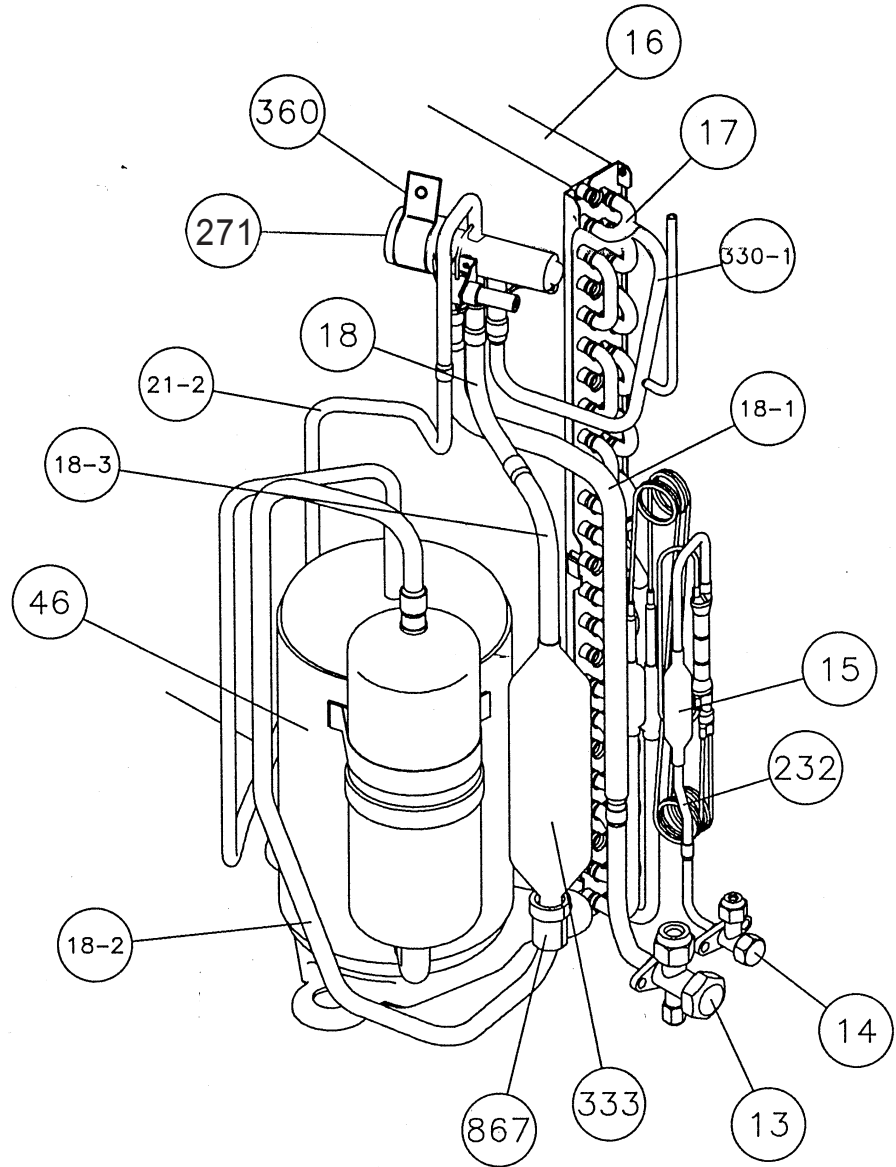


Model : ROW-17HB



Model: ROW-17HB





PARTS LIST

When you order parts, please make a photocopy of this page and fill the number of the parts in the "Order" column.

INDOOR UNIT

Ref. No.	Description	Part No.	Ord.
		RSW-17HB	Qty
28	Blower Cover	9304111016	
63	Front Panel Assy	9354229174	
65	Flow Control Panel	9354646063	
74	Filter	9304097013	
108	Base	9304107033	
109	Casing	9304108016	
122	Shaft Holder-B Assy	9304470007	
127	Drain Hose Assy	9368754013	
146	Evaporator Assy	9304589006	
151	Control Box	9304092001	
158	Joint Pipe Assy	9304286011	
164	Fan Motor Assy-IN	9354513044	
169	Cross-Flow Fan Assy	9306327002	
178	Motor Cushion-G	9304669005	
184-1	Thermistor Spring-A	313728262708	
185	Wire Clamp	9356959000	
188	Power Cord Assy	9900072018	
233	Power Transformer	9701803026	
235	Thermistor Assy-Pipe	9702325015	
236	Controller PCB Assy	9704341037	
240	Remote Control Unit	9356765113	
251	Hose Clamp (Drain Hose)	9304077008	
268	Motor Cover-B	9304231004	
281	Clamp Metal (Pipe)	9304242000	
283	Bushing-A	9303529010	
345	Filter Guide	9304110019	
385	Indicator PCB Assy	9701119219	
401	Wall Hook Bracket	9304093008	
406	Louver-L Assy	9354644014	
407	Louver-R Assy	9354643017	
425	Earth Terminal	9357852003	
652-1	Thermistor Holder Pipe	313714262805	
736	Operation Panel	9354230002	
743	Remote Control Unit Holder Case	9305642014	
758	Decoration Plate-A	9354223011	
759	Intake Grille-A	9355595063	
761	Side Cover-R	9303518076	
762	Side Cover-L	9303520147	
764	Drain Cap Assy	9304150008	
767-1	Bottom Cover-A	9303536056	
767-2	Bottom Cover-B	9303537053	
780	Key Top (Side Switch)	9303526002	
815	Terminal-4P	9701955039	
848	Catcher	9306545000	
870	Arm	9303525005	
871	Arm Spring	9304377009	
872	Indicator Case	9303631003	
874	Control Box Cover	9304094005	
875	Power Supply PCB Assy	9702451066	
876	Step Motor	9304535003	
963	Fan Guard	9356881011	
977	Louver Clip, Plastic	9356880014	
978	Wire Bracket-L	9356878011	
979	Wire Bracket-R	9356877014	
983	Thermistor Protect Cover	9356882001	

When you order parts, please make a photocopy of this page and fill the number of the parts in the "Order" column.

OUTDOOR UNIT

Ref. No.	Description	Part No.	Ord. Q'ty
		ROW-17HB	
2	Fan Cover	9350214020	
4	Emblem-Rear ÓFUJIÓ	9361328006	
5	Cabinet-A, Painted	9303876015	
6	Cabinet-C, Painted	9353549013	
7	Connector Cover	9358011010	
8	Wire Assy (Shield Tube)-D	9370945029	
9	Cabinet-B, Painted	9303874011	
10	Noise Insulation-E	313791106305	
12	Base Assy, Painted	9353452054	
13	3-Way Valve Assy	9364524009	
14	2-Way Valve	9358023013	
15	Dryer	9368112011	
16	Condenser Assy	9353455048	
17	ÓUÓ Pipe-Y	313728127102	
18	Suction Pipe-D	9367135004	
18-1	Suction Pipe-E	9371349015	
18-2	Suction Pipe-B	9371275031	
18-3	Suction Pipe-C	9371276021	
19-3	Capillary Tube (Cool)	9365395073	
21-2	Discharge Pipe	9369562006	
26	Compressor Cover-A	9363620007	
28	Insulation (Fan Cover)	313791345206	
29	Separate Wall	313986033213	
32-1	Control Box Metal-A	9365672013	
34	Capacitor (Fan Motor)	9357965017	
36-2	Cord Holder Metal	9356362008	
37	Running Capacitor	9704436023	
38	Clamp Metal (Capacitor)	9351770013	
39	Propeller Fan Assy	9300855013	
41	Fan Motor Assy-Out	9600738023	
45	Motor Fixing Table Assy	313029311100	
46	Compressor Assy	9368175009	
51	Special Nut M5 (For Comp.)	9300301015	
55	Special Nut M8 (For Comp.)	9355091008	
67	Rubber (Vibration-proof)	313659068604	
107	Rubber Seat (For Comp.)-A	9351049010	
109	Terminal Cover (Comp.)	9351048013	
117-3	Hex. Nut	301721180114	
187	Clamp No. 1219	313361271706	
196-1	Clamp SKB-3M	312300787605	
232	Joint Pipe (DRYER)	9371295015	
271	4-Way Valve Rubber	313728251908	
328	Compressor Plate-B	9363049039	
330-1	Inlet Pipe A Assy	9366859017	

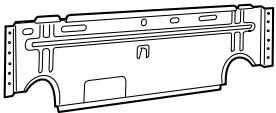
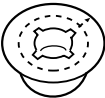






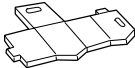

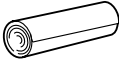

When you order parts, please make a photocopy of this page and fill the number of the parts in the "Order" column.

OUTDOOR UNIT (Continued)




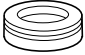
Ref. No.	Description	Part No.	Ord. Qty
		ROW-17HB	
333	Accumulator	9350363018	
335-2	Outlet Pipe-B	9365391020	
338	Motor Fixture Metal	313029297108	
343	Solenoid Coil	9704061010	
344	4-Way Valve	9307556012	
360	4-Way Valve Band	313986251802	
412	Terminal Gasket (Comp.)	9351051013	
519	Restrictor Valve Assy	9365392089	
646	Compressor Cover-B	9363021004	
717	Center Plate	9351253011	
754	Terminal Gasket Washer	9351053017	
815	Terminal-5P	9356497021	
867	Accumulator Holder Rubber	9354022027	
910	Strainer B	9365099018	

STANDARD ACCESSORIES

INDOOR UNIT ACCESSORIES

Name and Shape	Part No.
Wall hook bracket 	RSW-17HB 9304093008
Wall cap 	313714296205
Remote control unit 	9356765113 (AR-AB35)
Battery (penlight) 	0600185534
Cable mark 	9301385007
Tapping screw (big) (φ 4 x 20) 	301141164200
Tapping screw (small) (φ 3 x 12) 	0700019036
Flange screw (φ 4 x 10) 	9305114009
Spacer 	
Remote control unit holder case 	9305642014
Cloth tape 	9308117007
Seal-A 	9304536000

OUTDOOR UNIT ACCESSORIES

Name and Shape	Part No.
	ROW-17HB
Hexagon wrench 	9351228019
Drain pipe 	313728031005
Flexible tube 	313013042915
Drain cap 	313166024302



MANUFACTURER :

Fuji Denki Sosetsu Co., Ltd.

Tokyo, Japan