

FUJII
ELECTRIC

**SPLIT TYPE ROOM AIR
CONDITIONER**

WALL MOUNTED type

**SERVICE
MANUAL**

Models	Indoor unit	Outdoor unit
	RSW-17AB	ROW-17AB
	RSW-17RB	ROW-17RB

C O N T E N T S

SPECIFICATIONS	1
REFRIGERANT SYSTEM DIAGRAM	2
CIRCUIT DIAGRAM	3
INDOOR P.C. BOARD LAYOUTS	7
DISASSEMBLY ILLUSTRATION	10
PARTS LIST	14

S P E C I F I C A T I O N S

INDOOR UNIT		RSW-17AB	RSW-17RB
OUTDOOR UNIT		ROW-17AB	ROW-17RB
COOLING CAPACITY	(kW)	4.75 - 4.90	4.70 - 4.80
HEATING CAPACITY	(kW)	————	5.00 - 5.15

ELECTRICAL DATA

POWER SOURCE	(V)	220 - 240	220 - 240
FREQUENCY	(Hz)	50	50
RUNNING CURRENT	(A)		
	COOLING	9.5 - 10.1	9.5 - 10.0
	HEATING	————	9.9 - 10.5
INPUT WATTS	(kW)		
	COOLING	1.98 - 2.15	1.98 - 2.15
	HEATING	————	2.10 - 2.25
EER	(W/W)		
	COOLING	2.40 - 2.28	2.37 - 2.23
	HEATING	————	2.38 - 2.29
MOISTURE REMOVAL	(ℓ /hr)	2.1	2.1
AIR CIRCULATION-Hi	(m³/hr)	540	560

COMPRESSOR

TYPE	Hermetic type, Permanent split condenser, 2 pole, Single phase, induction motor
CODE	2JS350D5AB02

FAN MOTOR

		INDOOR UNIT		OUTDOOR UNIT	
MODEL		RSW-17AB	RSW-17RB	ROW-17AB	ROW-17RB
TYPE		MFA - 17AT		MFB - 247FBT	
POWER SOURCE	(V)	220 - 240			
FAN SPEED	HI-SPEED (r.p.m.)	1,240	1,300	740	735
	MED-SPEED (r.p.m.)	1,160	1,210		
	LO-SPEED (r.p.m.)	1,080	1,110		

DIMENSIONS

HEIGHT x WIDTH x DEPTH	(mm)	285 x 900 x 172	643 x 840 x 336
------------------------	------	-----------------	-----------------

WEIGHTS

GROSS / NET	(kg)	13 / 10	63 / 55	67 / 59
-------------	------	---------	---------	---------

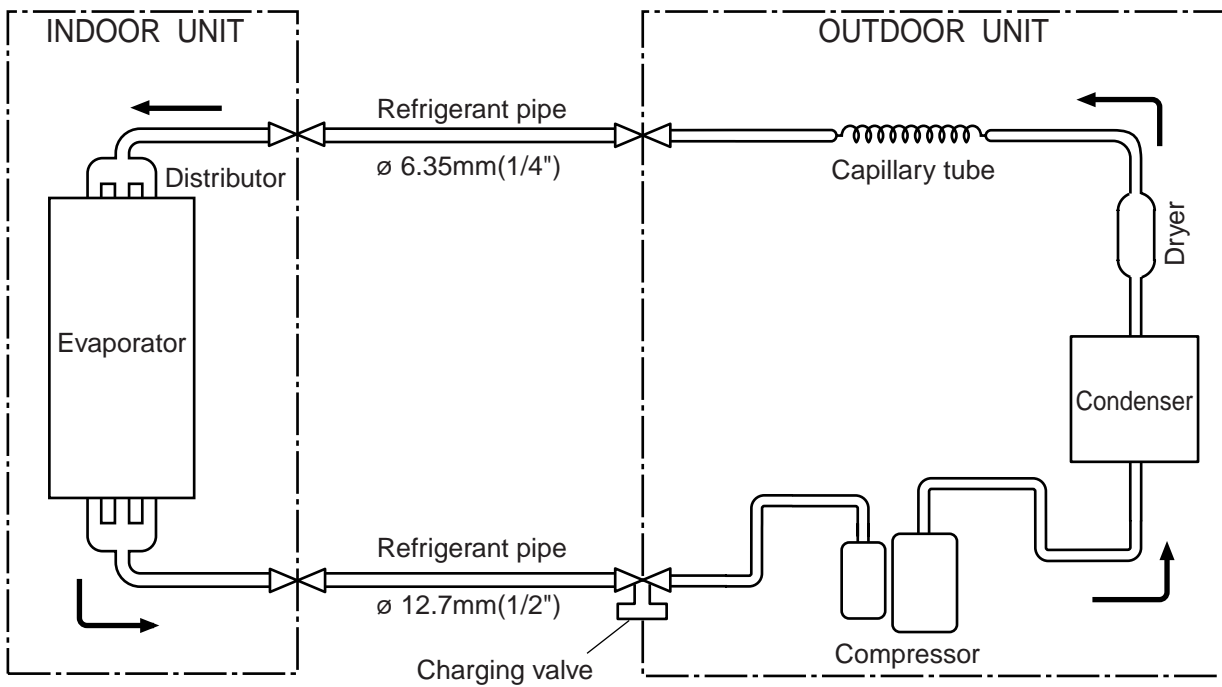
REFRIGERANT CHARGING

PIPE LENGTH		16 ft. (5 m)	23 ft. (7 m)	33 ft. (10 m)	49 ft. (15 m)	66 ft. (20 m)
FULL CHARGE AMOUNT	RSW-17AB	45.9 oz. (1,300 g)	44.6 oz. (1,320 g)	47.6 oz. (1,350 g)	49.4 oz. (1,400 g)	51.1 oz. (1,450 g)
	RSW-17RB	54.0 oz. (1,530 g)	54.6 oz. (1,550 g)	55.7 oz. (1,580 g)	57.4 oz. (1,630 g)	59.3 oz. (1,680 g)

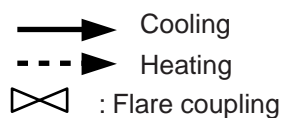
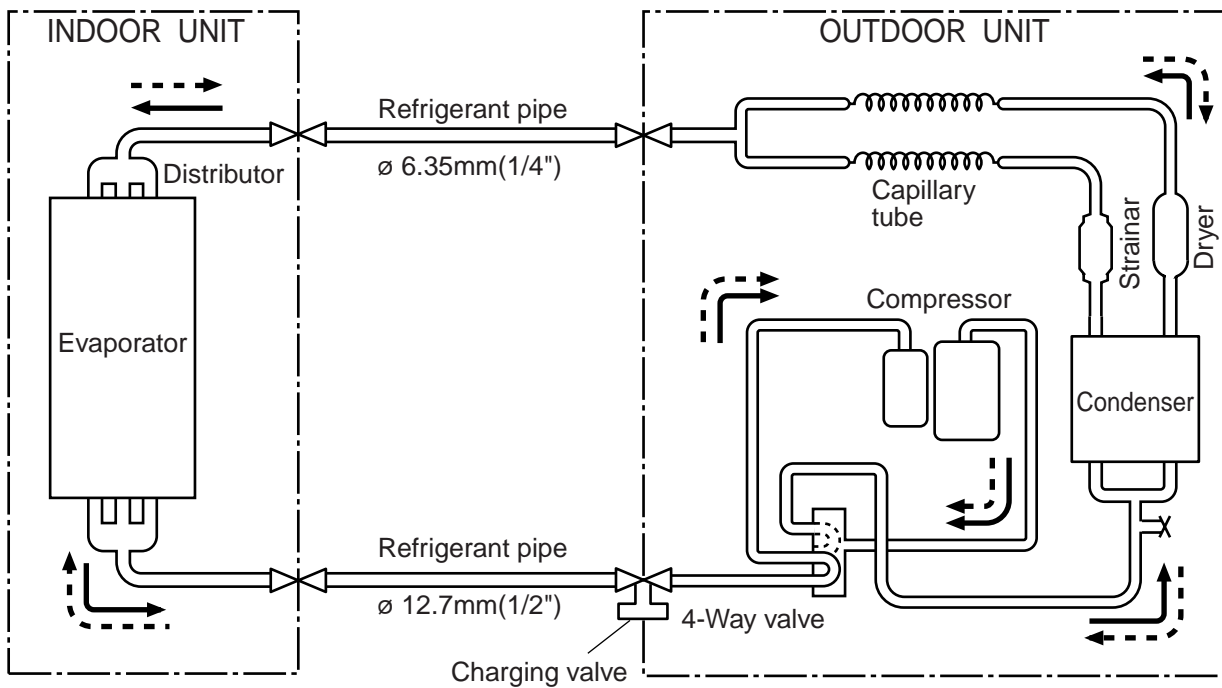
Note : Between 5 m and 20 m, when using a connection pipe other than that in the table,
charge additional refrigerant with 0.4 oz.(10g) / 3.3 ft.(1 m) as the criteria.

REFRIGERANT SYSTEM DIAGRAM

Models : RSW-17AB / ROW-17AB

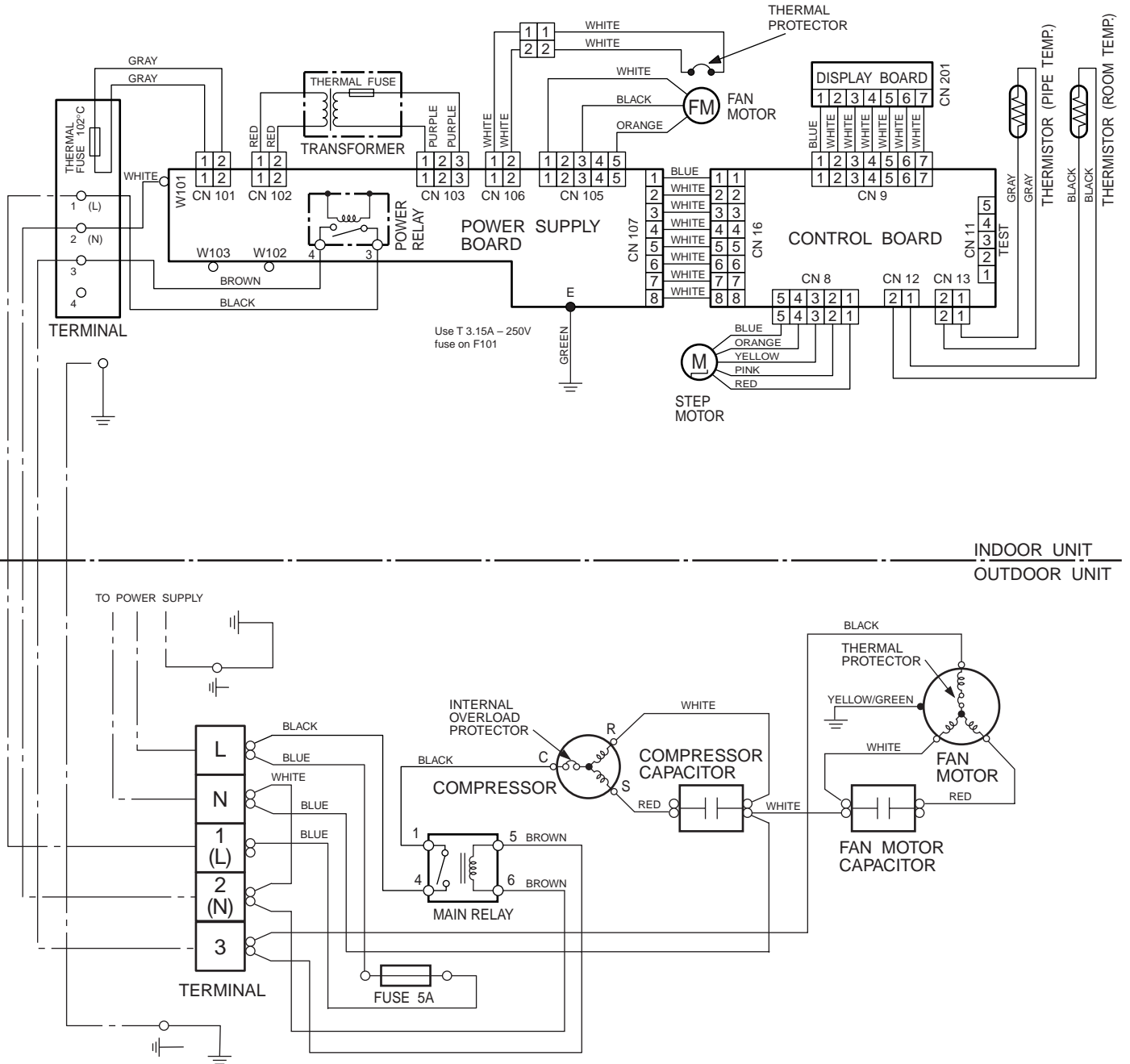


Models : RSW-17RB / ROW-17RB

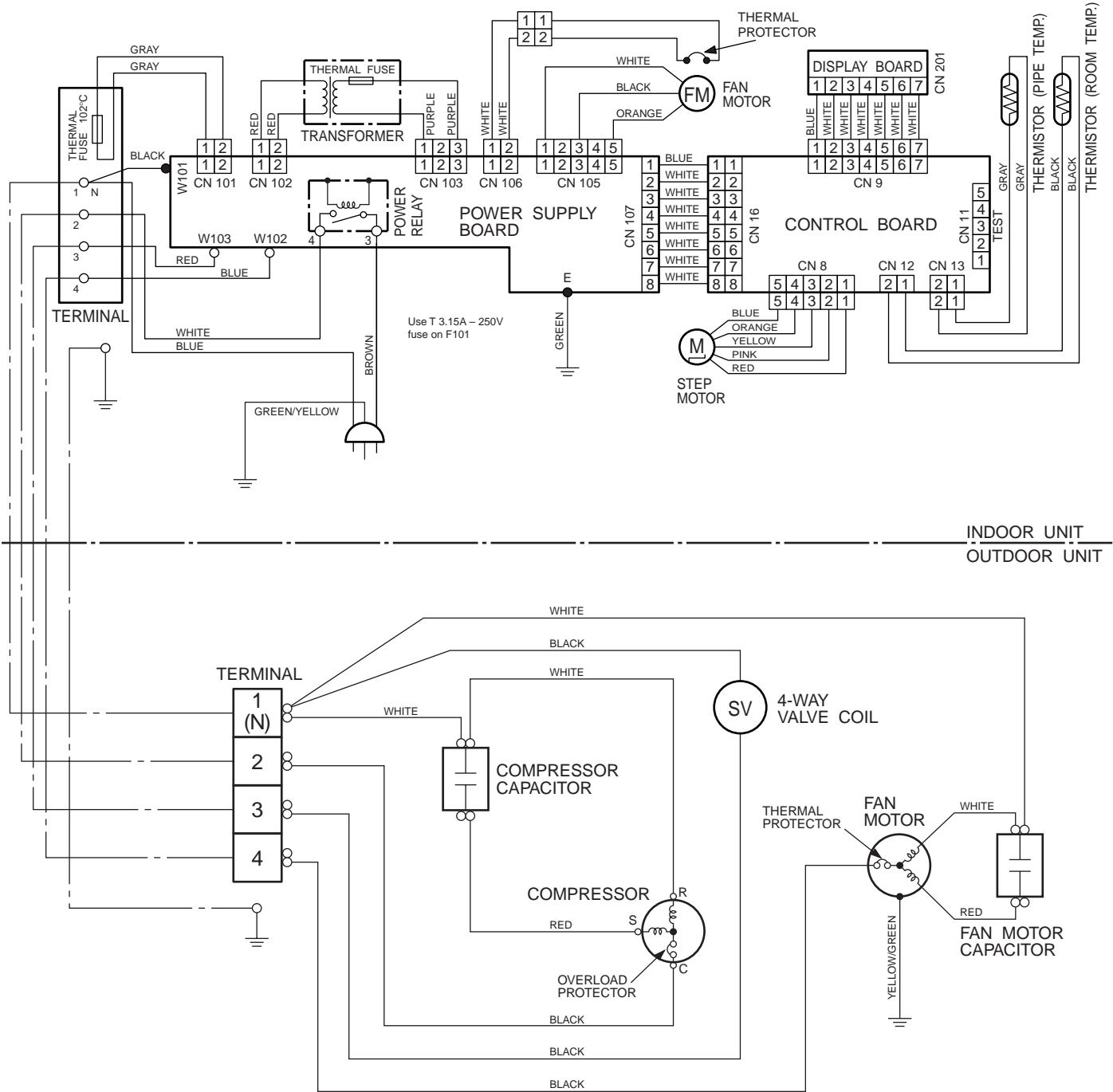


CIRCUIT DIAGRAM

Models : RSW-17AB / ROW-17AB



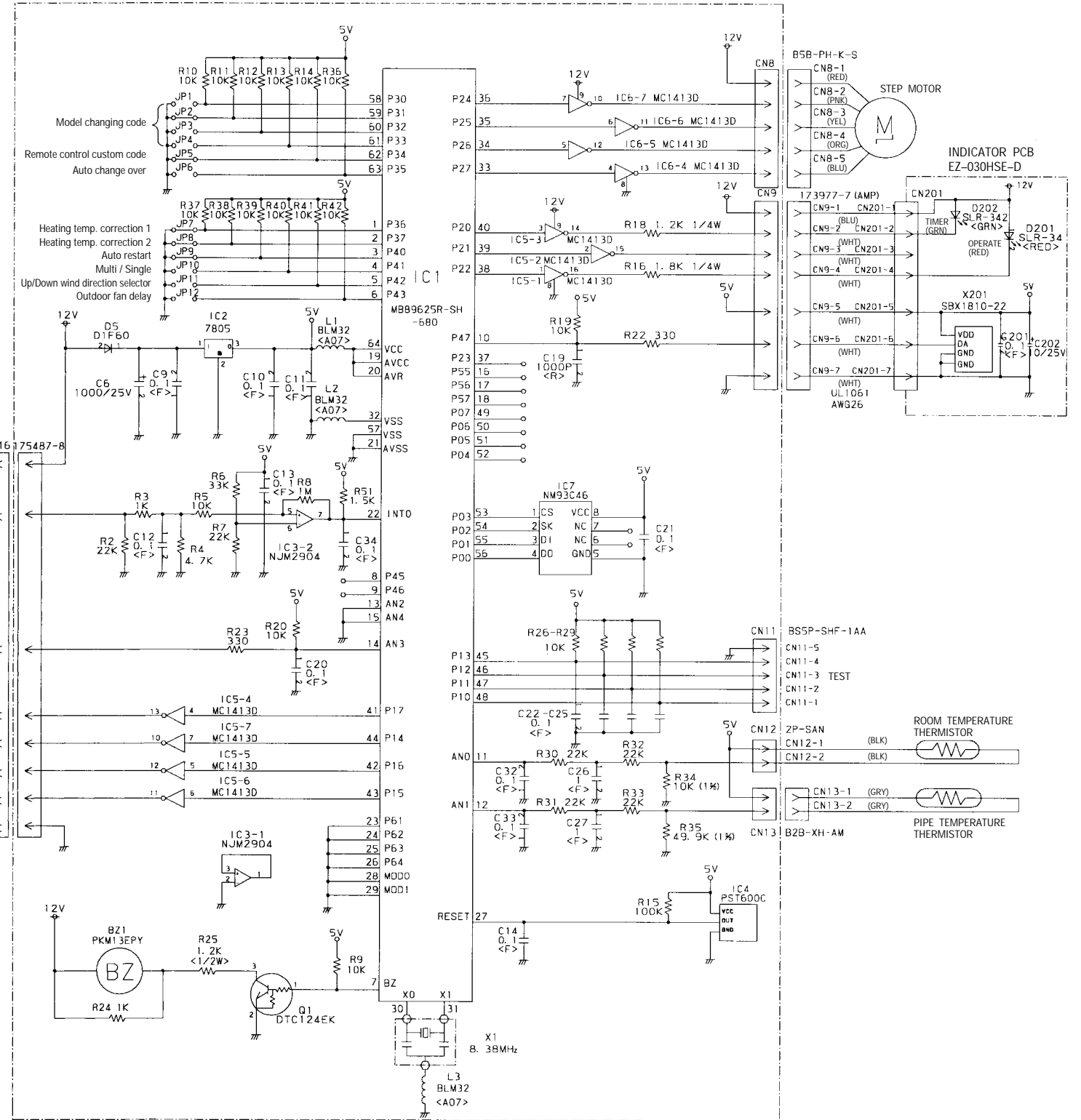
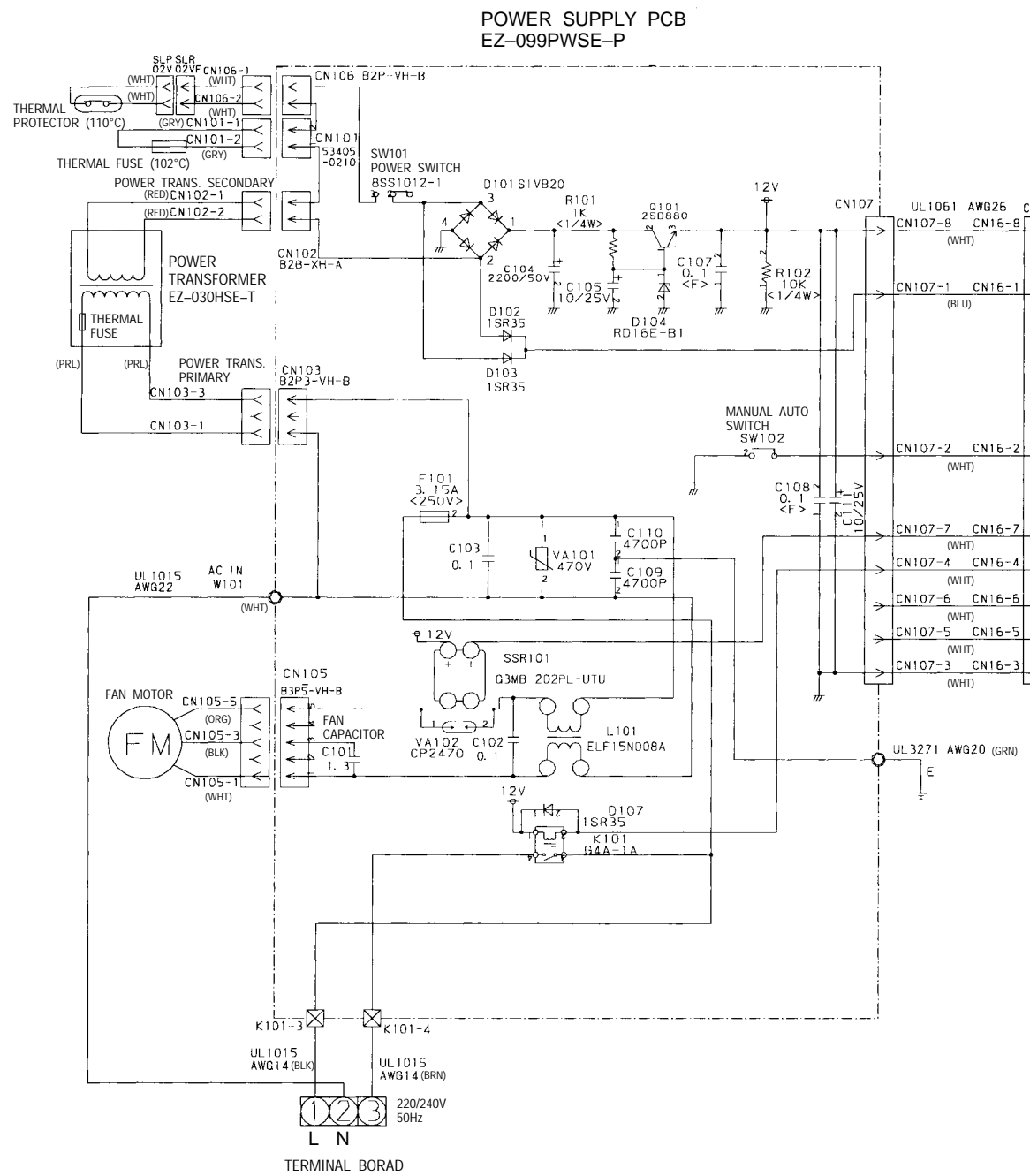
Models : RSW-17RB / ROW-17RB



INDOOR PRINTED CIRCUIT BOARD CIRCUIT DIAGRAM

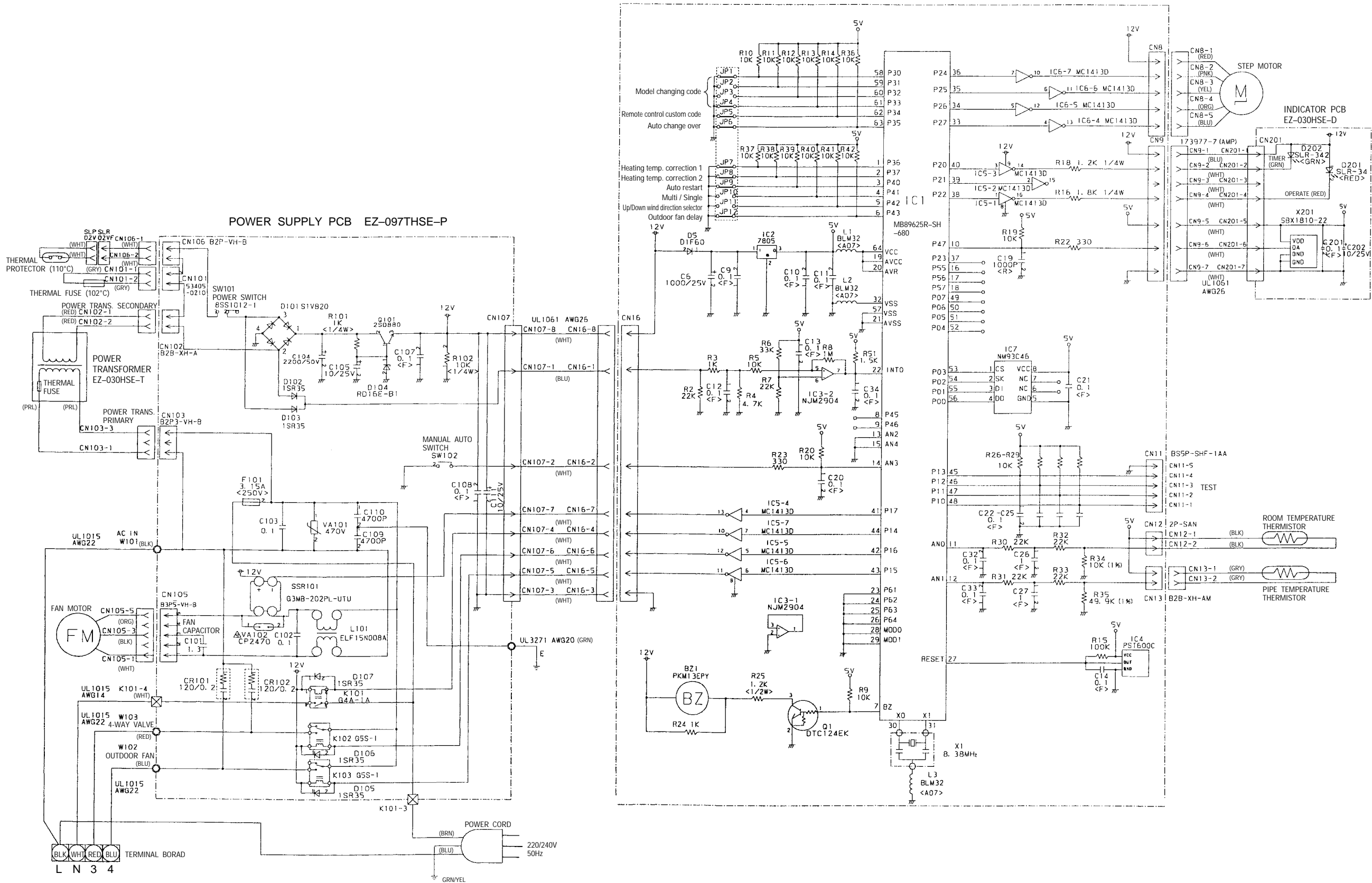
Model : RSW-17AB

CONTROLLER PCB ASSEMBLY (MAIN PCB)
EZ-095GWSE-C (GM-6805)



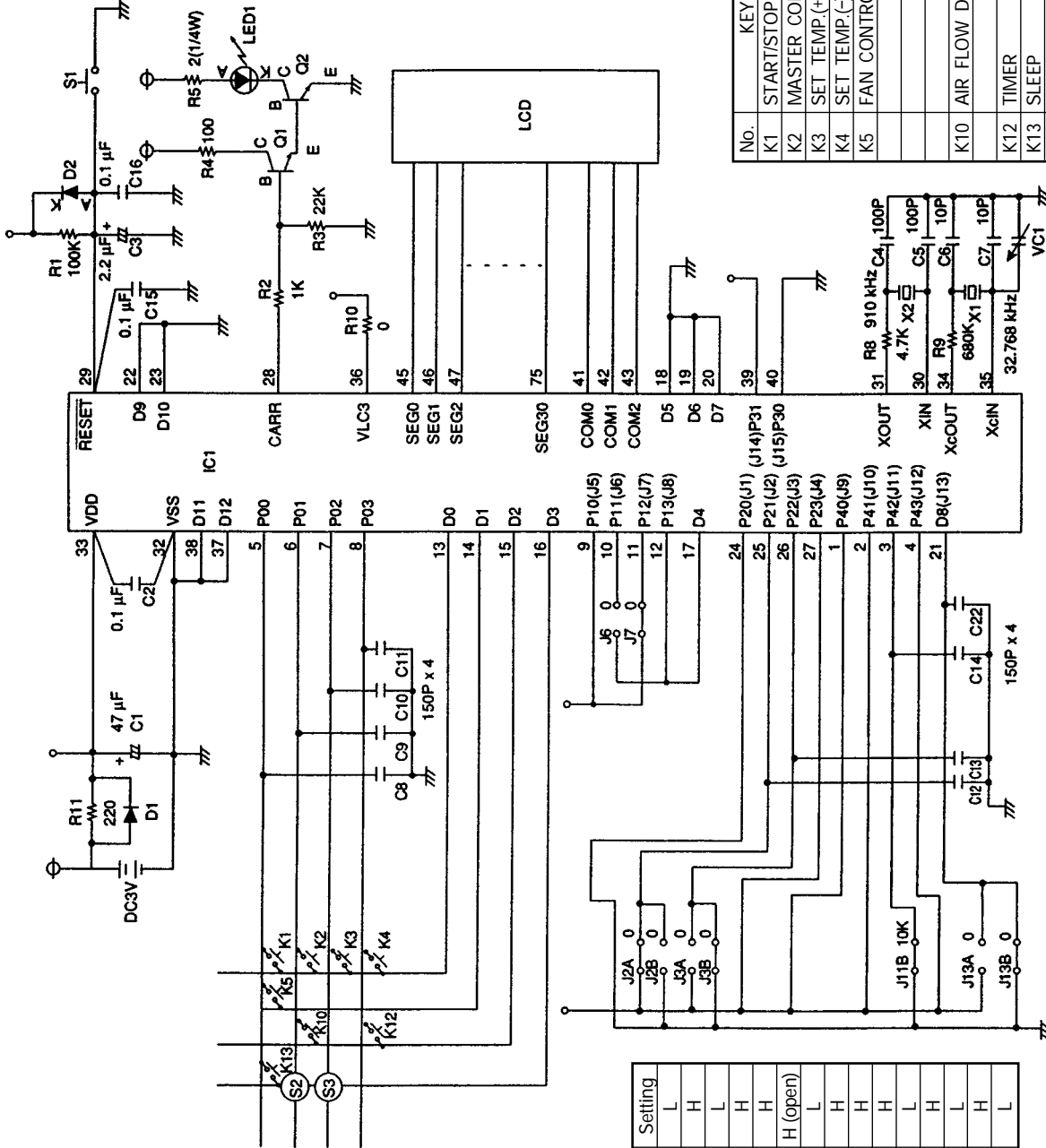
Model : RSW-17RB

CONTROLLER PCB ASSEMBLY (MAIN PCB)
EZ-0960HSE-C (GM-6844)



REMOTE CONTROL UNIT CIRCUIT DIAGRAM

Model : RSW-17AB



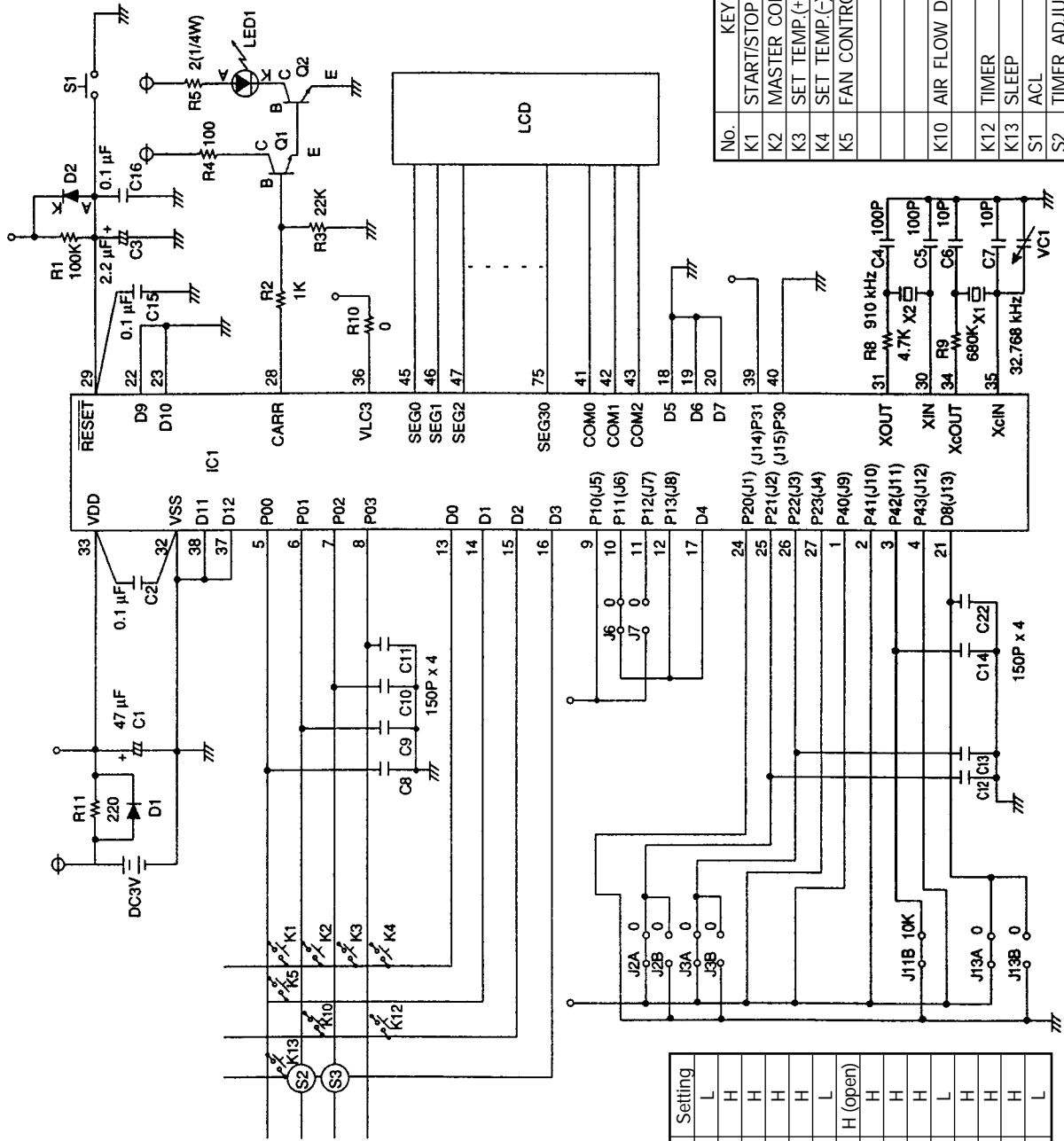
No.	KEY PADS
K1	START/STOP
K2	MASTER CONTROL
K3	SET TEMP(+), SET TIME(+)
K4	SET TEMP(-), SET TIME(-)
K5	FAN CONTROL
K10	AIR FLOW DIRECTION
K12	TIMER
K13	SLEEP
S1	ACL
S2	TIMER ADJUST
S3	TEST RUN

Jumper Wire Function Selection

No.	Function	Setting
J1	Timer button change	L
J2	Transmitter code selector	H
J3	Heating mode	L
J4	Air flow direction / Auto louver	H
J5	Dry mode	H
J6	Automatic operation temperature indication	H (open)
J7	Fan mode / Circulation	L
J8	24Hr / 12Hr display selector	H
J9	Temperature unit selector	H
J10	Fan mode	H
J11	Quiet	L
J12	Sleep	H
J13	Auto operation selector	L
J14	Remote control selector I	H
J15	Remote control selector II	L

L : Connected to $\overline{\text{H}}$

H : Connected to H



No.	KEY PADS
K1	START/STOP
K2	MASTER CONTROL
K3	SET TEMP.(+), SET TIME(+)
K4	SET TEMP.(-), SET TIME(-)
K5	FAN CONTROL
K10	AIR FLOW DIRECTION
K12	TIMER
K13	SLEEP
S1	ACL
S2	TIMER ADJUST
S3	TEST RUN

Jumper Wire Function Selection

No.	Function	Setting
J1	Timer button change	L
J2	Transmitter code selector	H
J3	Heating mode	H
J4	Air flow direction / Auto louver	H
J5	Dry mode	H
J6	Automatic operation temperature indication	L
J7	Fan mode / Circulation	H (open)
J8	24Hr / 12Hr display selector	H
J9	Temperature unit selector	H
J10	Fan mode	H
J11	Quiet	L
J12	Sleep	H
J13	Auto operation selector	H
J14	Remote control selector I	H
J15	Remote control selector II	L

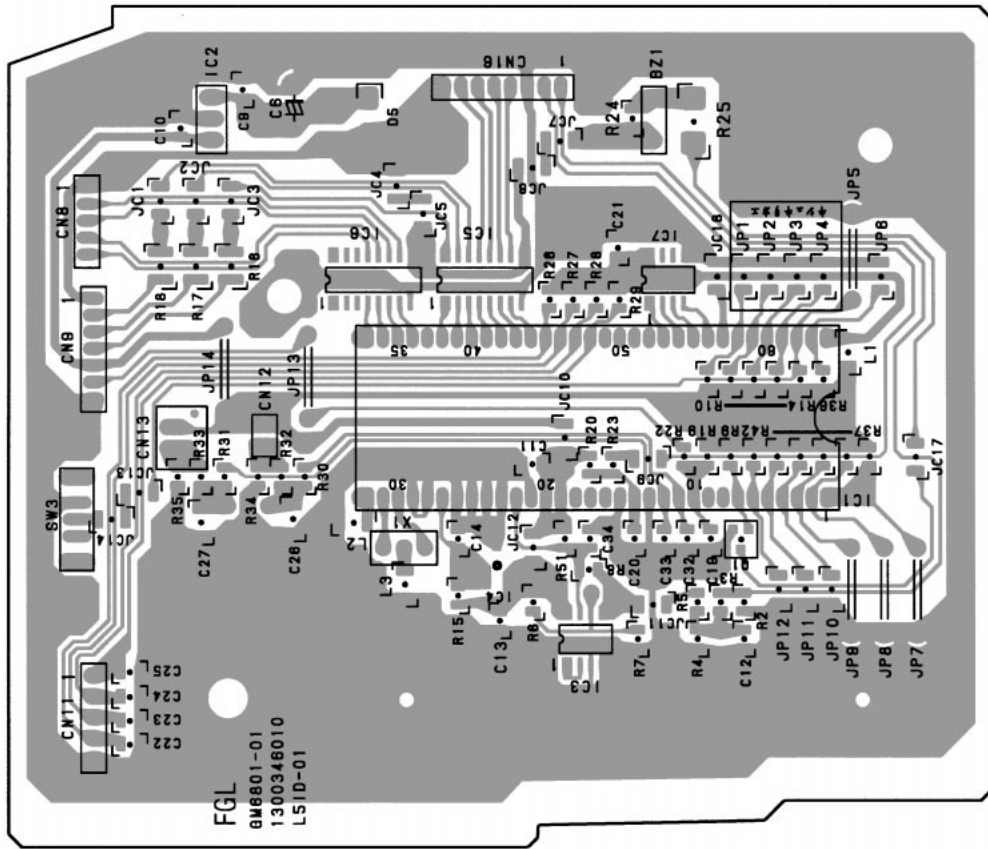
L : Connected to

H : Connected to

INDOOR P.C. BOARD LAYOUTS

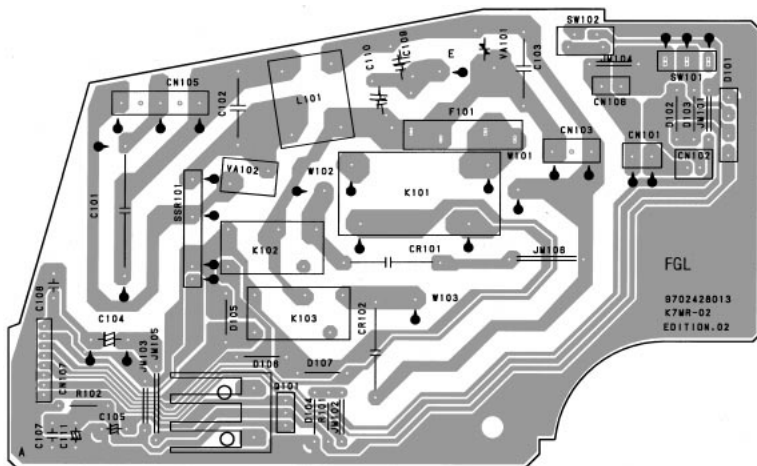
CONTROLLER P.C. BOARD ASSEMBLY (MAIN PCB)

(Viewed from the solder side)



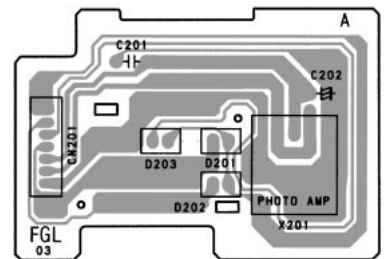
POWER SUPPLY P.C. BOARD ASSEMBLY

(Viewed from the solder side)



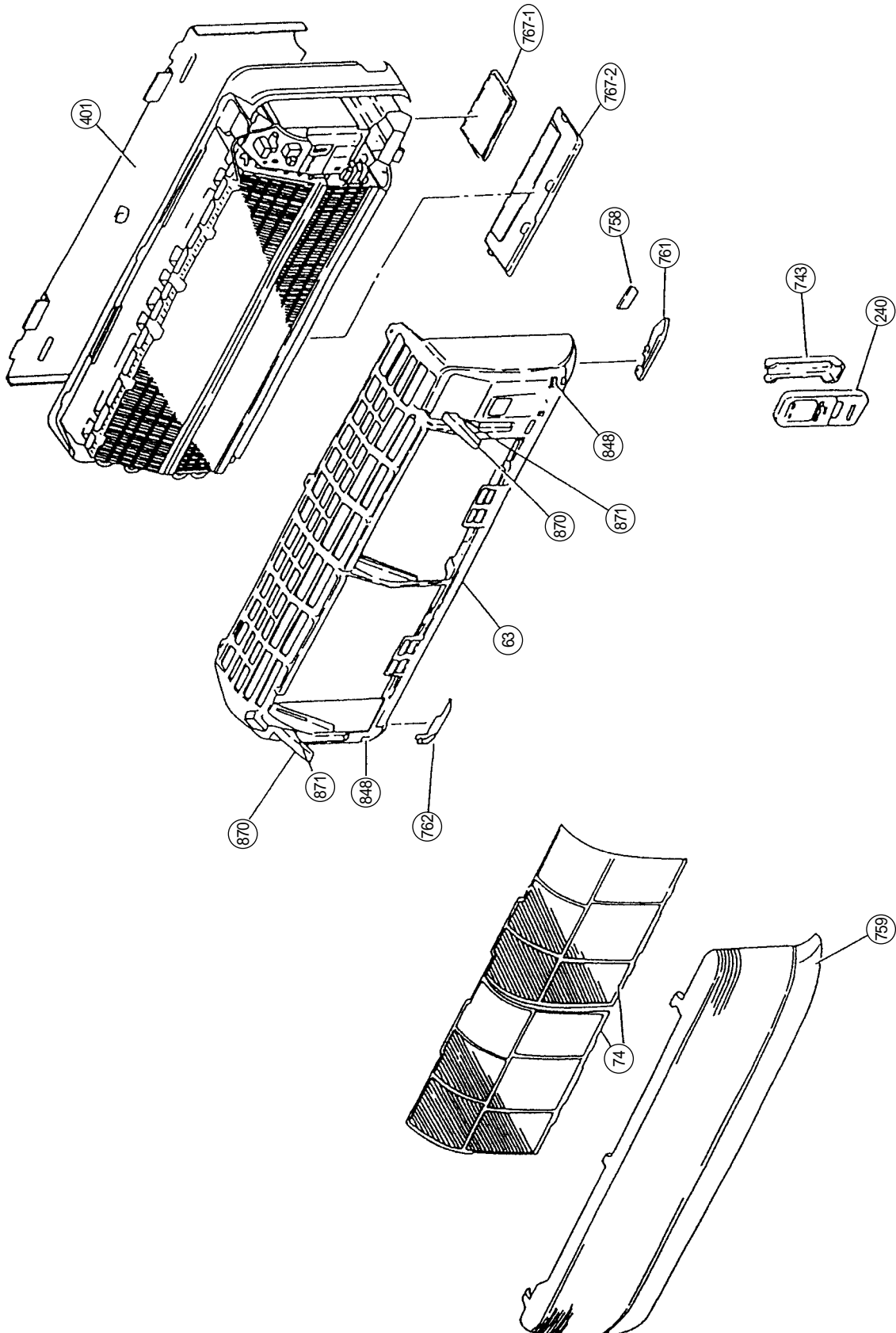
INDICATOR P.C. BOARD ASSEMBLY

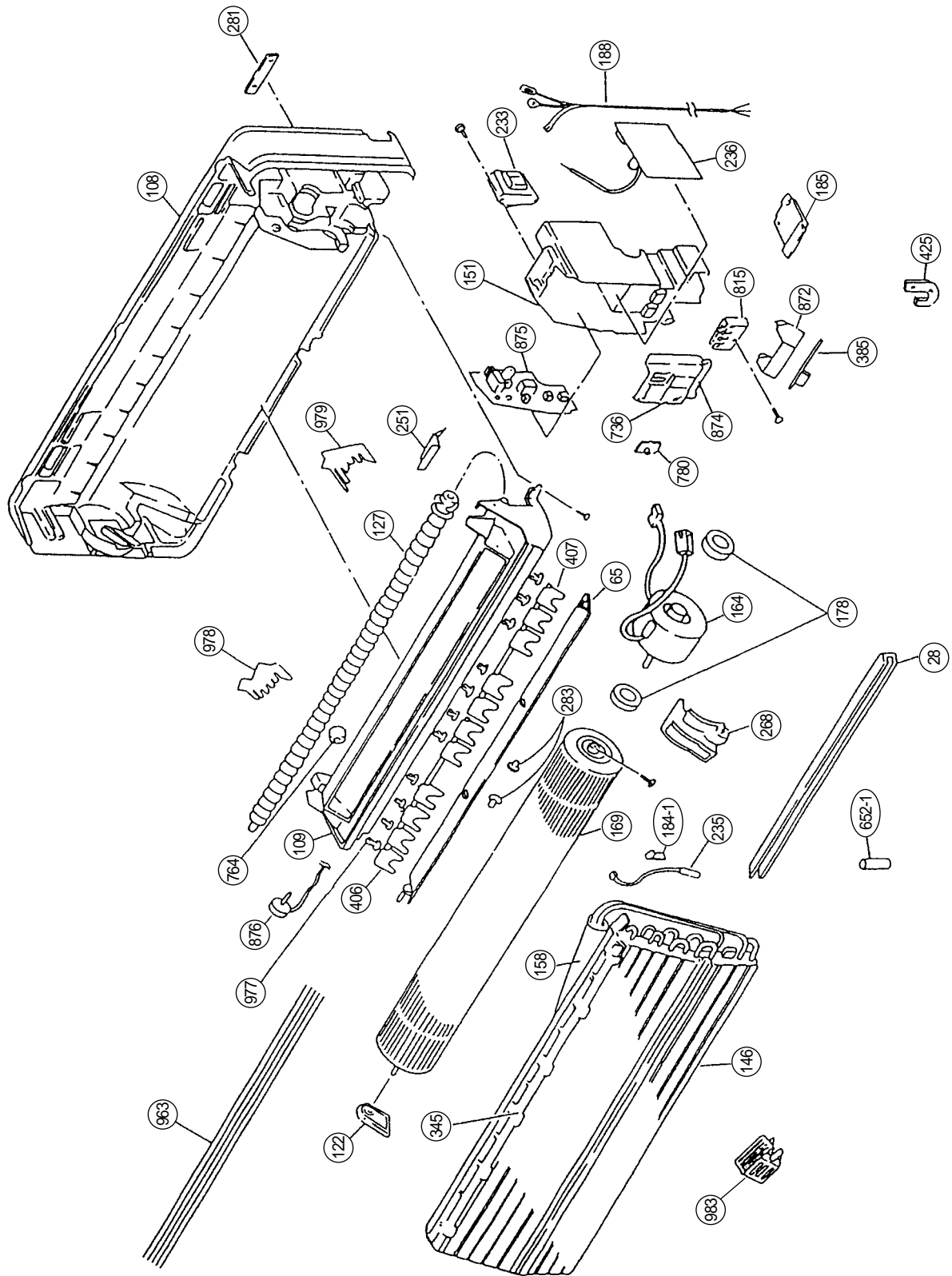
(Viewed from the solder side)



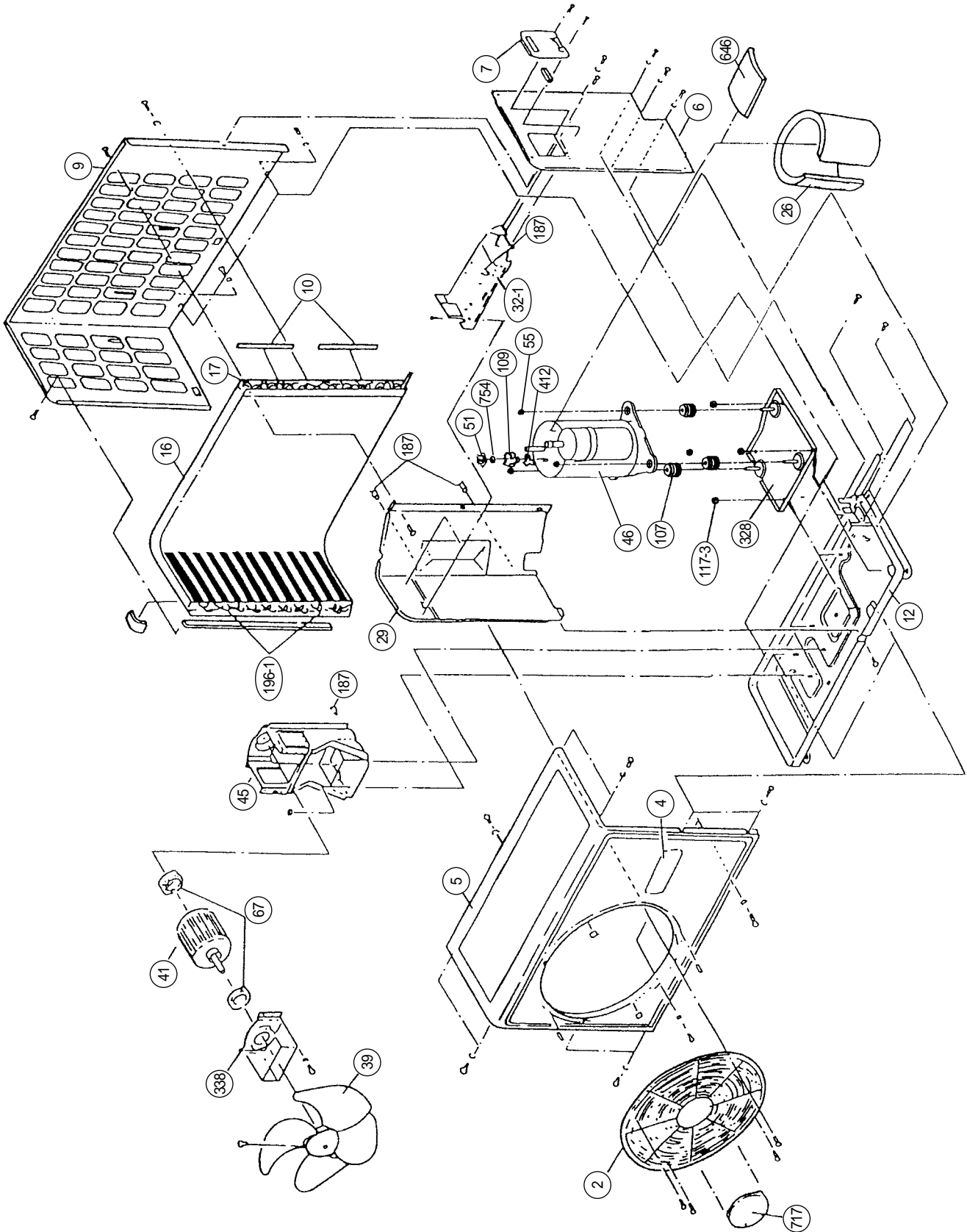
DISASSEMBLY ILLUSTRATION

Models : RSW-17AB
RSW-17RB

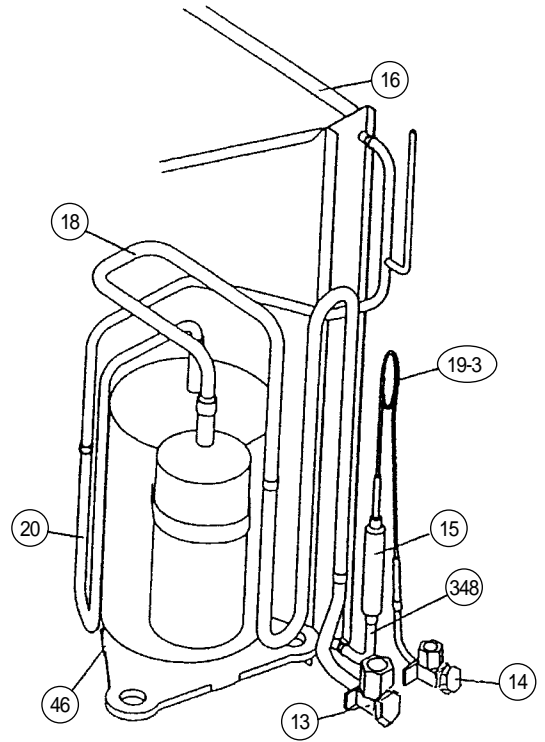
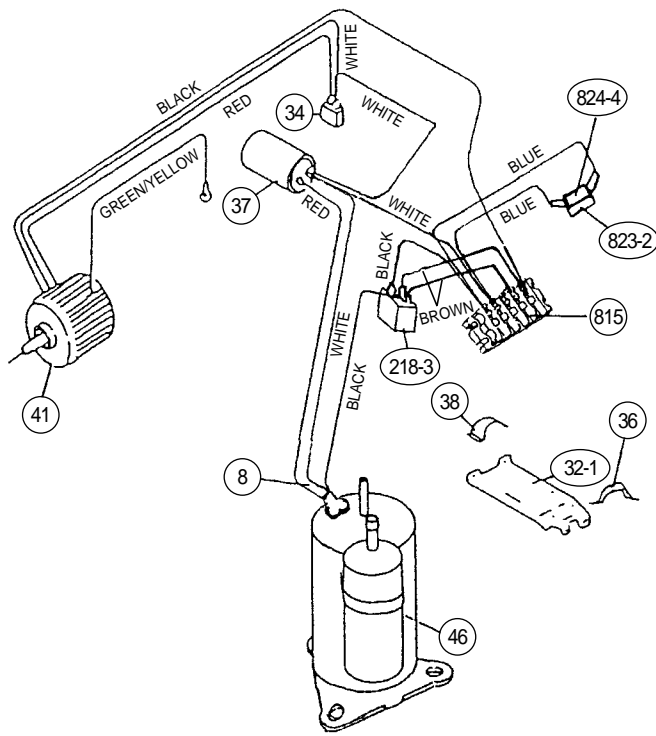




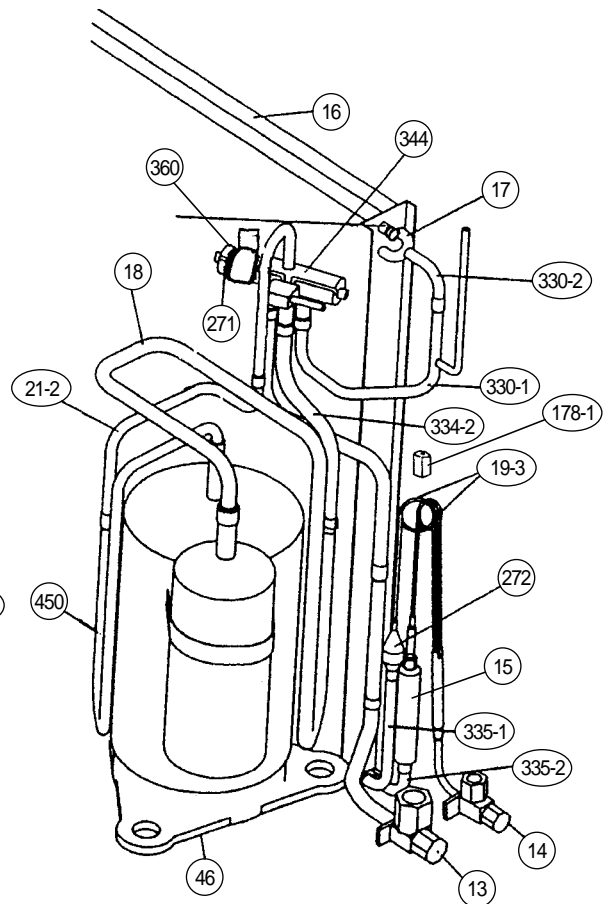
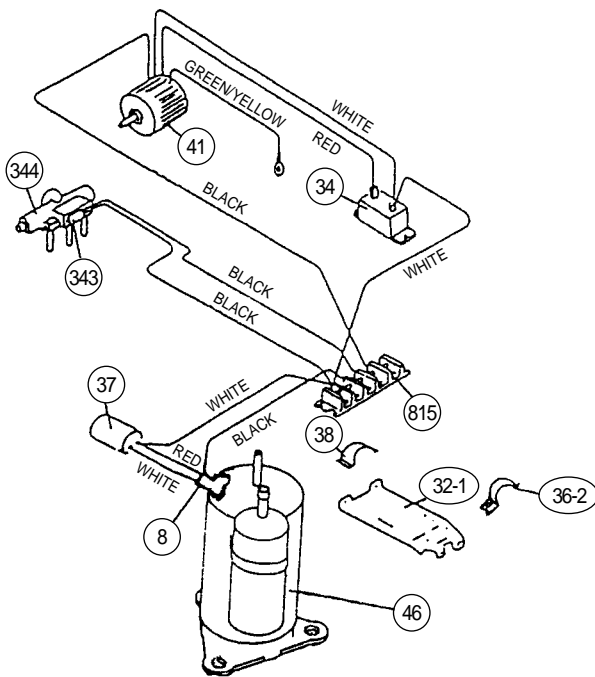
Models : ROW-17AB
ROW-17RB



Model : ROW-17AB



Model : ROW-17RB



PARTS LIST

When you order parts, please make a photocopy of this page and fill the number of the parts in the "Order" column.

INDOOR UNIT

Ref. No.	Description	Part No.		Ord. Q'ty	Ref. No.	Description	Part No.		Ord. Q'ty
		RSW-17AB	RSW-17RB				RSW-17AB	RSW-17RB	
28	Blower Cover	9304111016	9304111016		406	Louver-L Assy	9354644014	9354644014	
63	Front Panel Assy "FUJI"	9354229174	9354229174		407	Louver-R Assy	9354643017	9354643017	
65	Flow Control Panel	9354646063	9354646063		425	Earth Terminal	9357852003	9357852003	
74	Filter	9304097013	9304097013		652-1	Thermistor Holder Pipe	313714262805	313714262805	
108	Base	9304107033	9304107033		736	Operation Panel	9354230002	9354230002	
109	Casing	9304108016	9304108016		743	Remote Control Unit Holder Case	9305642014	9305642014	
122	Shaft Holder-B Assy	9304470007	9304470007		758	Decoration Plate-A	9354223011	9354223011	
127	Drain Hose Assy	9304761013	9304761013		759	Intake Grille-B "FUJI"	9355595063	9355595063	
146	Evaporator Assy	9304589006	9304589006		761	Side Cover-R	9303518076	9303518076	
151	Control Box	9304092001	9304092001		762	Side Cover-L	9303520147	9303520147	
158	Connecting Pipe Assy	9304286011	9304286011		764	Drain Cap Assy	9304150008	9304150008	
164	Fan Motor Assy-In	9354513044	9354513044		767-1	Bottom Cover-A	9303536056	9303536056	
169	Cross-flow Fan Assy	9306327002	9306327002		767-2	Bottom Cover-B	9303537053	9303537053	
178	Motor Cushion-G	9304669005	9304669005		780	Key Top (Slide Switch)	9303526002	9303526002	
184-1	Thermostat Spring-A	313728262708	313728262708		815	Terminal-3P	9701955046		
185	Wire Clamp	9356959000	9356959000		815	Terminal-4P		9701955039	
188	Power Cord Assy		9359917007		848	Catcher	9306545000	9306545000	
233	Power Transformer	9701803026	9701803026		870	Arm	9303525005	9303525005	
235	Thermistor Assy-Pipe	9702325015	9702325015		871	Arm Spring	9304377009	9304377009	
236	Controller PCB Assy	9701553051	9701553143		872	Indicator Case	9303631003	9303631003	
240	Remote Control Unit	9356765076	9356765113		874	Control Box Cover	9304094005	9304094005	
251	Hose Clamp	9304077008	9304077008		875	Power Supply PCB Assy	9702451035	9702451011	
268	Motor Cover-B	9304231004	9304231004		876	Step Motor	9304535003	9304535003	
281	Clamp Metal (Pipe)	9304242000	9304242000		963	Fan Guard	9356881011	9356881011	
283	Bushing-A	9303529010	9303529010		977	Louver Clip, Plastic	9356880014	9356880014	
345	Filter Guide	9304110019	9304110019		978	Wire Bracket-L	9356878011	9356878011	
385	Indicator PCB Assy	9701119011	9701119011		979	Wire Bracket-R	9356877014	9356877014	
401	Wall Hook Bracket	9304093008	9304093008		983	Therm. Protect Cover	9356882001	9356882001	

OUTDOOR UNIT

Ref. No.	Description	Part No.		Ord. Q'ty	Ref. No.	Description	Part No.		Ord. Q'ty
		ROW-17AB	ROW-17RB				ROW-17AB	ROW-17RB	
2	Fan Cover	9350214020	9350214020		51	Special Nut M5	9300301015	9300301015	
4	Emblem-Rear	9301702019	9301702019		55	Special Nut M8	313252257701	313252257701	
5	Cabinet-A, Painted	9303876015	9303876015		67	Rubber (Vibration-proof)	313659068604	313659068604	
6	Cabinet-C, Painted	9353549013	9353549013		107	Rubber Seat-A (For Comp.)	9351049010	9351049010	
7	Connector Cover	9358011010	9358011010		109	Terminal Cover (For Comp.)	9351048013	9351048013	
8	Wire Assy(Shield Tube)-D	9359904076	9359904083		117-3	Hex. Nut Washer Spring	301721180114	301721180114	
9	Cabinet-B, Painted	9303874011	9303874011		178-1	Capillary Holder Rubber		313414274807	
10	Noise Insulation-E	313791106305	313791106305		187	Clamp No. 1219	313361271706	313361271706	
12	Base Assy, Painted	9353452054	9353452054		196-1	Clamp SKB-3M		312300787605	
13	3-Way Valve Assy	9364524009	9364524009		196-2	Clamp SKB-150	313035356905	313035356905	
14	2-Way Valve	9358023013	9358023013		271	4-Way Valve Rubber		313728251908	
15	Dryer	9353789006	9353789006		272	Strainer		9350379026	
16	Condenser Assy	9353455055	9353455048		328	Compressor Plate-B	9363049015	9363049015	
17	"U" Pipe-Y		313728127102		330-1	Inlet Pipe (Cond.) Assy		9363476002	
18	Suction Pipe Assy	9363493009			330-2	Inlet Pipe (Cond.)-B		9363495003	
18	Suction Pipe-A		9363490008		334-2	Suction Pipe-B		9363483000	
19-3	Capillary Tube (Cool)	9363436006	9363481006		335-1	Outlet Pipe-A		9363489002	
20	Discharge Pipe Assy	9363492002			335-2	Outlet Pipe-B		9363488005	
21-2	Discharge Pipe-B		9363482003		338	Motor Fixture Metal	313029297108	313029297108	
26	Compressor Cover-A	9363620007	9363620007		343	Solenoid Coil		9359616092	
29	Separate Wall	313986033213	313986033213		344	4-Way Valve		313943302804	
32-1	Control Box Metal-A	9353595003	9353595003		348	Outlet Pipe	9363433005		
34	Capacitor (Fan Motor)	9357965017	9357965017		360	4-Way Valve Band		313986251802	
36	Cord Holder Metal	9356934007			412	Terminal Gasket	9351051013	9351051013	
36-2	Cord Holder Metal		9356362008		450	Discharge Pipe-A		9363494006	
37	Running Capacitor	9703107016	9703107016		646	Compressor Cover-B	9363021004	9363021004	
38	Capacitor Clamp Metal	9351770013	9351770013		717	Center Plate	9351253011	9351253011	
39	Propeller Fan Assy	9300855013	9300855013		754	Terminal Gasket Washer	9351053017	9351053017	
41	Fan Motor Assy-Out	9600738023	9600738023		815	Terminal-5P	9356497021	9356497021	
45	Motor Fixing Table Assy	313029311100	313029311100		823-2	Fuse Holder	0500063024		
46	Compressor Assy	9363446005	9363446005		824-4	Fuse	0600222529		

When you order parts, please make a photocopy of this page and fill the number of the parts in the "Order" column.

CONTROLLER PCB ASSEMBLY (Ref. No. 236)

Ref. No.	Description	Part No.	Ord. Qty	Ref. No.	Description	Part No.	Ord. Qty
IC1	IC MB89625R-SH-680	1300413033		R35	Res. 49.9kΩ±0.5%	0200344683	
IC2	IC NJM7805FA	0100462081		R51	Res. 1.5kΩ±5%	0200212784	
IC3	IC NJ2904M	0100534054		JP1,2,4,6,12, JC1,3-7,9- 12,17,18	Res. 0Ω	0200230016	
IC4	IC PST600CMTR	0101461120		C6	Cap. Elec. 25V 1000μF	0300631256	
IC5,6	IC MC1413DR2	0101736013		C9-14,20-25, 32-34	Cap. Ceramic 0.1μF	1902783046	
IC7	IC NM93C46M8-X	0101622026		C19	Cap. Ceramic 1000pF	1902829072	
Q1	Xstr DTC124EKA	0000936033		C26,27	Cap. Ceramic 1μF	1800119015	
D5	Diode D1F60	0000208024		X1	Ceramic Resonator CST8.38MTW-TF01	1300116019	
R2,7,30-33	Res. 22kΩ±5%	0200213095		BZ1	Buzzer PKM13EPY-4000-TF01	9701298013	
R3,24	Res. 1kΩ±5%	0200212746		L1-3	EMI Filter BLM31A601SPT	0400119029	
R4	Res. 4.7kΩ±5%	0200212906		JP5,7-9,13,14	Wire IPS-3002-4	1903332014	
R5,9-14,19,20, 26-29,36-42	Res. 10kΩ±5%	0200213019		CN8	Plug, PCB B5B-PH-K-S	0500200061	
R6	Res. 33kΩ±5%	0200213132		CN9	Plug, PCB 175487-7	0500891016	
R8	Res. 1MΩ±5%	0200213491		CN11	Plug, PCB B55P-SHF-1AA	0500898015	
R15	Res. 100kΩ±5%	0200213255		CN12	Thermistor (Room Temp.)	9700801023	
R16	Res. 1.8kΩ±5%	0200691725		CN13	Plug, PCB B2B-XH-A	0500005055	
R18	Res. 1.2kΩ±5%	0200691534		CN16	Plug, PCB 175487-8	0500891023	
R22,23	Res. 330Ω±5%	0200212623					
R25	Res. 1.2kΩ±5%	0201001769					
R34	Res. 10kΩ±0.5%	0200344010					

POWER SUPPLY PCB ASSEMBLY (Ref. No. 875)

() : Reverse cycle model

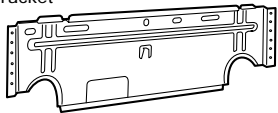
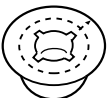

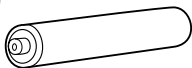




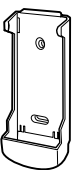
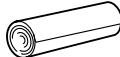

Ref. No.	Description	Part No.	Ord. Qty	Ref. No.	Description	Part No.	Ord. Qty
Q101	Xstr 2SD880	0000001014		L101	EMI Filter ELF15N008A	0400165071	
D101	Diode S1VB20	0000292054		SW101	Slide Switch 8SS1012-1	9701426010	
D102,103, (D105,106),107	Diode 1SR35-200A	0000016018		SW102	Push Switch KSM0632B	9703476013	
D104	Diode RD16EB1	0000296014		F101	Fuse BET 3.15A-250V	0600222512	
R101	Res. Carbon 1/4W 1kΩ±5%	0201038758			Fuse Holder SN-5057	9700116011	
R102	Res. Carbon 1/4W 10kΩ±5%	0201005019		CN101	Plug, PCB 53405-0210	0500940011	
(CR101,102)	Network RPEL-121204	9701125012		CN102	Plug, PCB B2B-XH-A	0500005055	
C101	Cap. Plastic 400V 1.3μF	0300939048		CN103	Plug, PCB B2P3-VH-B	0500011728	
C102,103	Cap. Plastic 0.1μF	0300304075		CN105	Plug, PCB B3P5-VH-B	0500011735	
C104	Cap. Elec. 50V 2200μF	0301190981		CN106	Plug, PCB B2P-VH-B	0500011124	
C105,111	Cap. Elec. 25V 10μF	0300007341		CN107	Wire w/Connector L=180	9701052011	
C107,108	Cap. Ceramic 0.1μF	0300988251		JM101-103	Wire 0.6mm dia. L=10mm	9700025016	
C109,110	Cap. Ceramic 4700pF	0300209110		JM105,(106)	Wire 0.6mm dia. L=15mm	9700672012	
VA101	Varistor ERZ-V10V471CS	0000515139		W101	Wire w/Terminal L=190 WHT	9703280016	
VA102	Arrester CP2470-F	9701835010		(W101)	Wire w/Terminal L=190 BLK	9701169191	
SSR101	Relay G3M-202PL-UTU	9701375011		(W102)	Wire w/Terminal L=230 BLU	9701169016	
K101	Relay G4A-1A-PS	9701024018		(W103)	Wire w/Terminal L=220 RED	9701170012	
(K102,103)	Relay G5S-1	9701925018		E	Wire w/Terminal L=250 GRN	9701150014	
				HT	Heat Sink PUG-16	9701189014	

INDICATOR PCB ASSEMBLY (Ref. No. 385)





Ref. No.	Description	Part No.	Ord. Qty	Ref. No.	Description	Part No.	Ord. Qty
X201	Remote control Amplifier SBX1810-22	0101525129		CN201	Wire w/Connector L=250 Lamp Cover-A	9700923015 9303702000	
D201	Diode SLR-34LR RED	0000727013		C201	Cap. Ceramic 0.1μF	0300988251	
D202	Diode SLR-342MG GRN	0000727167		C202	Cap. Elec. 25V 10μF	0300328026	

STANDARD ACCESSORIES

INDOOR UNIT ACCESSORIES

Name and Shape	RSW-17AB	RSW-17RB
Wall hook bracket 	9304093008	9304093008
Wall cap 	313714296205	313714296205
Remote control unit 	9356765076 (AR-AB25)	9356765113 (AR-AB35)
Battery (penlight) 	0600185534	0600185534
Cable mark 	—	9301385007
Tapping screw (Big) (ø4 x 20) 	301141164200	301141164200
Tapping screw (Small) (ø3 x 12) 	301141533125	301141533125
Flange screw (ø4 x 10) 	9305114009	9305114009
Remote control unit holder case 	9305642014	9305642014
Cloth tape 	9304232001	9304232001
Seal-A 	9304536000	9304536000

OUTDOOR UNIT ACCESSORIES

Name and Shape	ROW-17AB	ROW-17RB
Hexagon wrench 	9351228019	9351228019
Drain pipe 	—	313728031005
Flexible tube 	—	313013042915
Drain cap 	—	313166024302



MANUFACTURER :

Fuji Denki Sosetsu Co., Ltd.

Tokyo, Japan