



SERIES VTD300
ESBE
 NO.1 IN HYDRONIC SYSTEM CONTROL

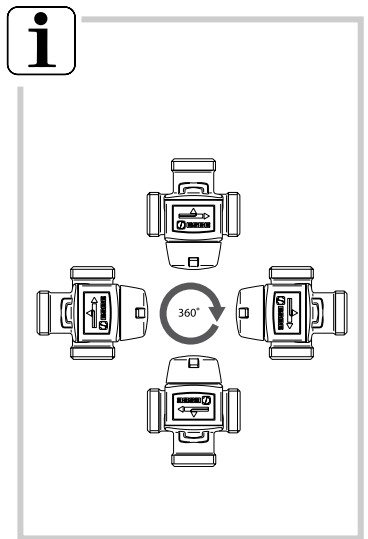
Mtrl.nr: 9814 04 08 • Rrl.nr:nr: 9218 • utg. C • Rev. 1106



Series VTD322

CE
 PED 97/23/EC

°C MPa/bar

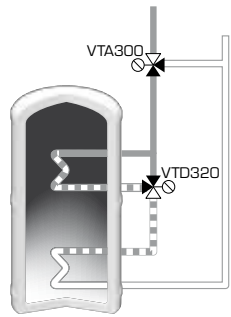


<42°C
 <46°C
 <56°C
 <66°C

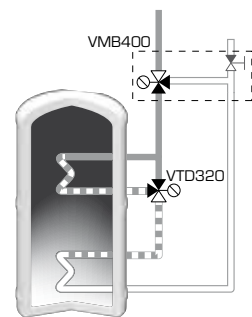
42°C - 48°C
 46°C - 54°C
 56°C - 64°C
 66°C - 74°C

>48°C
 >54°C
 >64°C
 <74°C

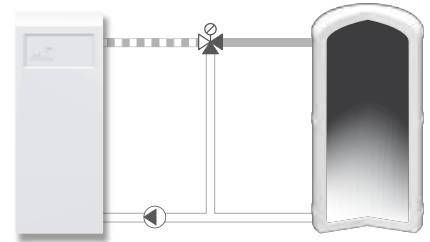
2



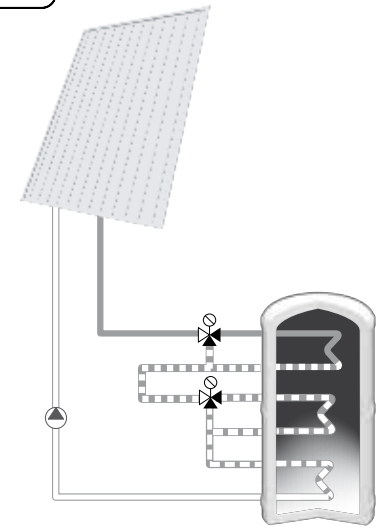
3



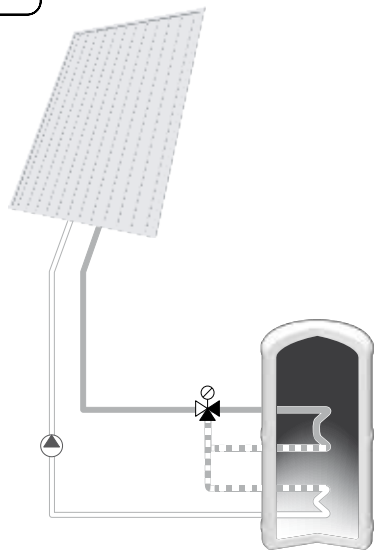
4



5

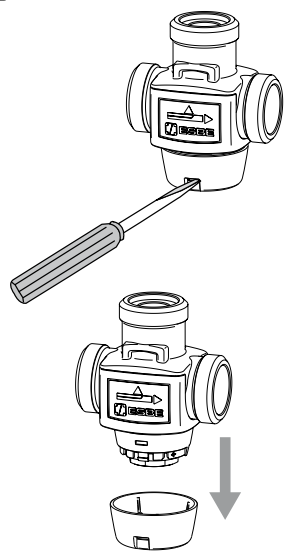


6

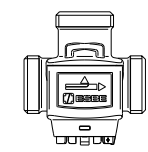


All piping Schematics are General Representations

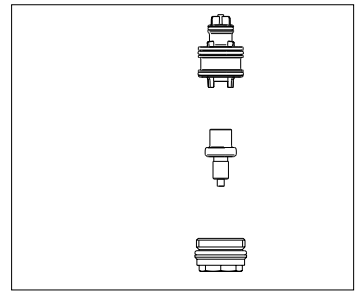
i



VTD322



VTD911



"Denna produkt är anpassad till Branschregler och Säker Vatteninstallation. Leverantören garanterar produktens funktion om branschreglerna och monteringsanvisningen följs."