

## Instructions

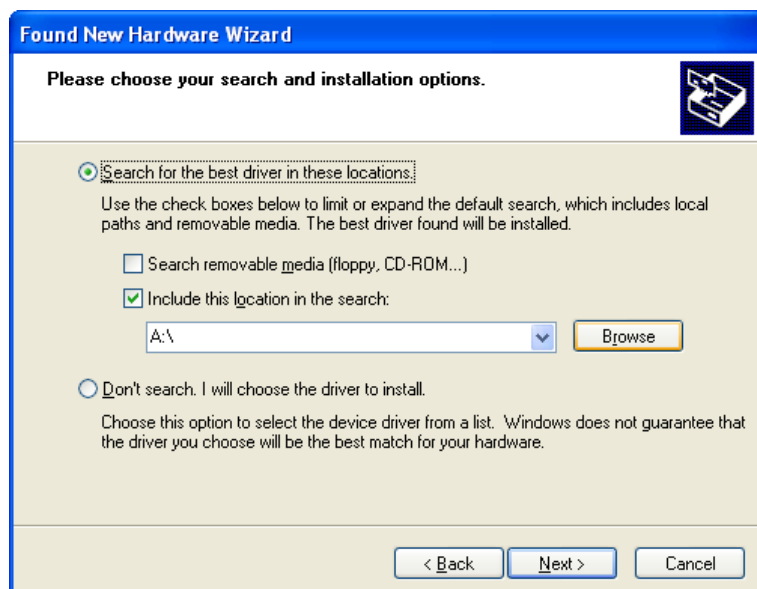
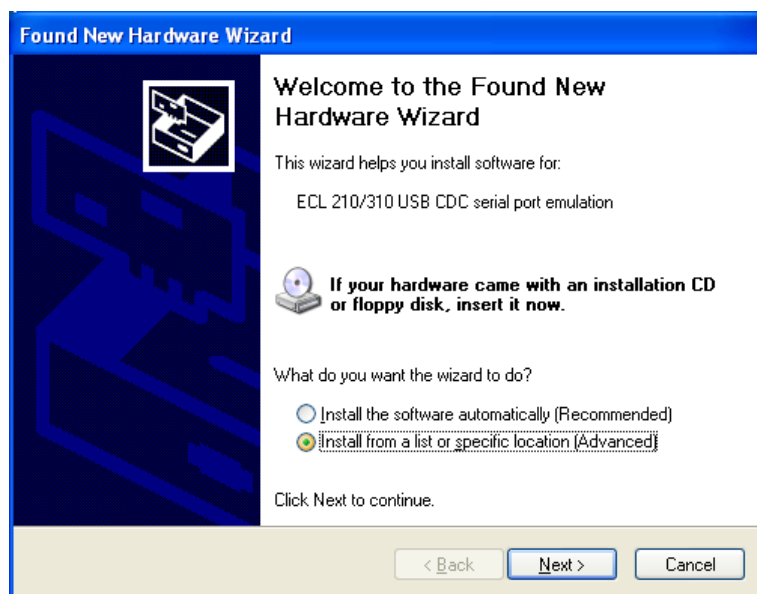


This description is only intended for use in connection with ECL Comfort 210/310

## USB driver installation guide


### Connecting the ECL to the PC the first time

The ECL USB connection uses a special driver. When Windows detects ECL the first time, you will be prompted for a driver installation.



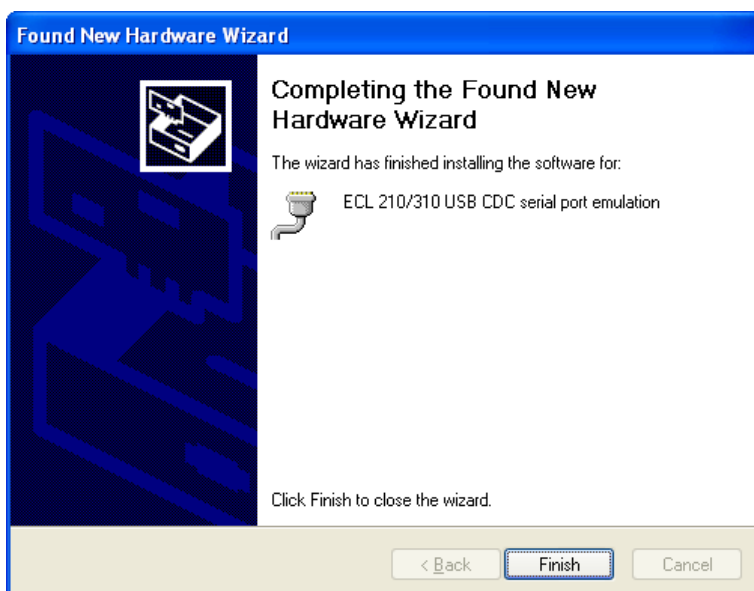
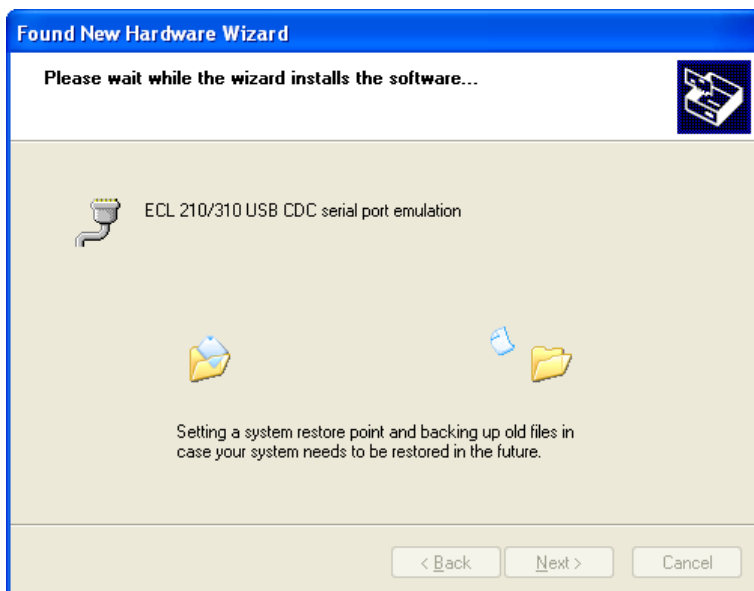
Select the Danfoss driver (Folder ..\USB\_driver) and press "Next".

# Instructions

 This description is only intended for use in connection with ECL Comfort 210/310



Press "Continue Anyway".



# Instructions



This description is only intended for use in connection with ECL Comfort 210/310

The ECL USB driver is now installed and the ECL should be visible in the Windows Device Manager.

