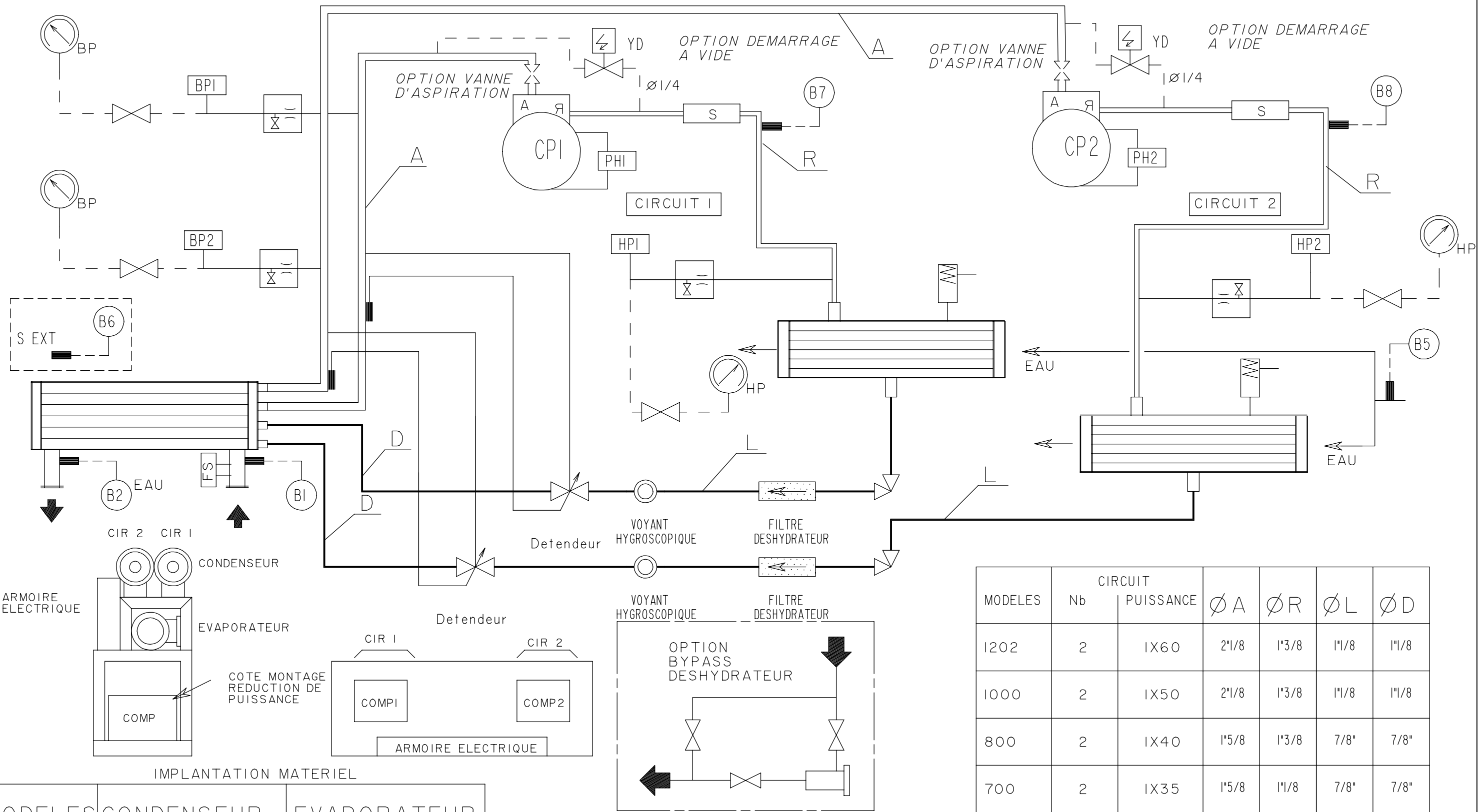


MODELES	Nb	CIRCUIT PUISSANCE	Ø A'	Ø A	Ø R'	Ø R	Ø L	Ø D
1000	1	2X50	2 1/8	2 5/8	1 3/8	2 1/8	1 1/8	1 3/8
800	1	2X40	1 5/8	2 1/8	1 3/8	1 5/8	1 1/8	1 1/8
700	1	2X35	1 5/8	2 1/8	1 1/8	1 5/8	1 1/8	1 1/8

MODELES	CONDENSEUR	EVAPORATEUR
1202	FKN 273.20.IN	FYN 273.20.4B.4II
1000	FKN 219.20.IR	FYN 273.20.4B.4II
800	FKN 219.20.IR	FYN 273.20.4B.4II
700	FKN 219.20.IR	FYN 273.20.4B.4II

JP	32	13/06/95	MODIFIE R POUR LE LR 700
MODIFIE PAR	IND	N.ETUDE	DATE
APPAREIL OU UNITE		MODIFICATION	
LRP 700 A 1202			
DESIGNATION		ECHELLE	
SCHEMA FRIGORIFIQUE		TRAITEMENT	
2 COMPRESSEURS - 1 CIRCUIT		MASSE:	
NUMERO DE COMMANDE:		REPLACE PAR:	
NOTE D'ETUDE:		REPLACE:	
VERIFIE PAR:		FORMAT	
DESSIN PAR:		NUMERO DE PLAN	
JP		A3	
DATE: 25/10/93		3956106	
		INDICE	
		32	



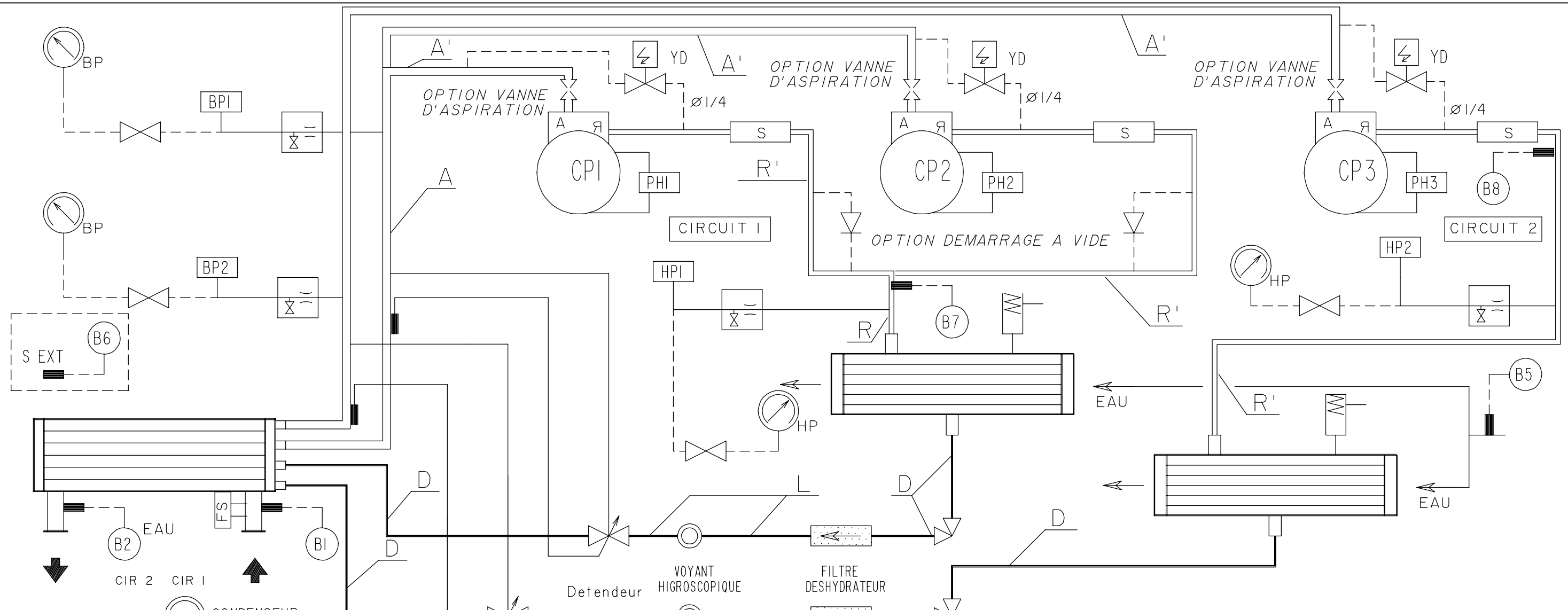


IMPLANTATION MATERIEL

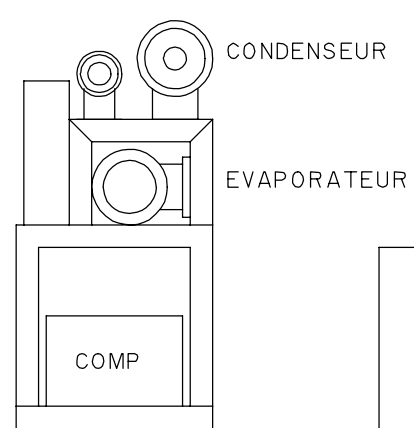
MODELES	CONDENSEUR	EVAPORATEUR
1202	2 FKN 168.20.IR	FYN 273.20.222
1000	2 FKN 168.20.IR	FYN 273.20.222
800	2 FKN 168.20.IR	FYN 273.20.222
700	2 FKN 168.20.IR	FYN 273.20.222

MODELES	CIRCUIT		Ø A	Ø R	Ø L	Ø D
	Nb	PUISSANCE				
1202	2	1X60	2"1/8	1"3/8	1"1/8	1"1/8
1000	2	1X50	2"1/8	1"3/8	1"1/8	1"1/8
800	2	1X40	1"5/8	1"3/8	7/8"	7/8"
700	2	1X35	1"5/8	1"1/8	7/8"	7/8"

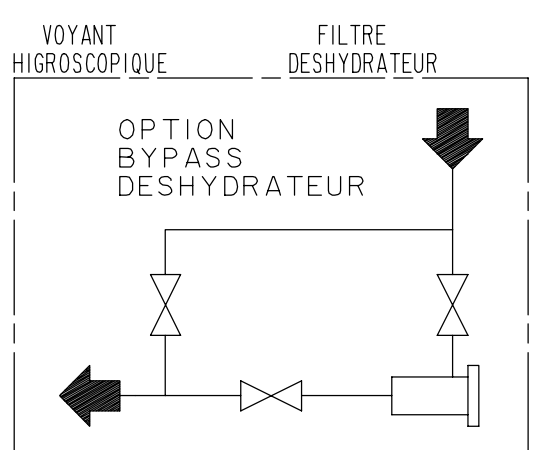
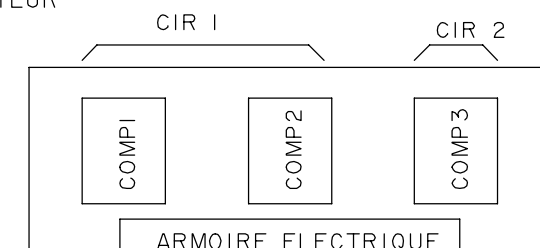
JP	31	25/08/93	MODIFIE LES SONDES POUR LE MRSI-4
MODIFIE PAR	IND	N.ETUDE	DATE
		APPAREIL OU UNITE LRP 700 A 1202	
DESIGNATION SCHEMA FRIGORIFIQUE 2 COMPRESSEURS 2 CIRCUITS		ECHELLE TRAITEMENT	MATIERE:
NUMERO DE COMMANDE:		FOLIO 1/1	MASSE:
NOTE D'ETUDE:		DATE:	REMPLACE PAR:
VERIFIE PAR:		DATE:	REMPLACE: A3 3955962 30
DESSIN PAR: SC		DATE: 21-04-92	NUMERO DE PLAN 3955962
		FORMAT A3	INDICE 31



ARMOIRE ELECTRIQUE




IMPLANTATION MATERIEL

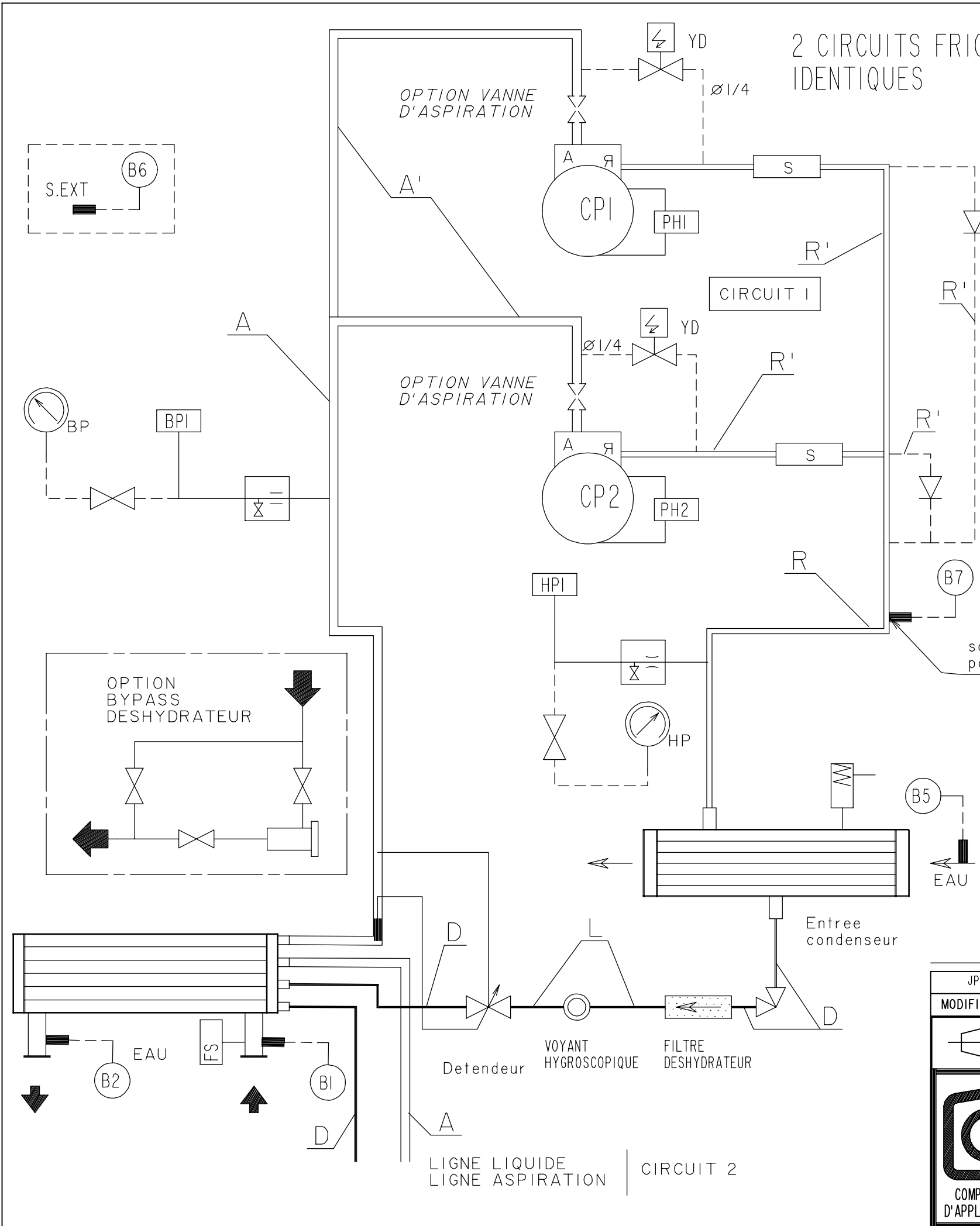


MODELES	CIRCUIT	PUISSANCE	Ø A	Ø A'	Ø R	Ø R'	Ø L	Ø D
1803	CIR 1	2X60	2"5/8	2"1/8	2"1/8	1"3/8	1"3/8	1"3/8
	CIR 2	1X60	—	2"1/8	—	1"3/8	1"1/8	1"1/8
1600	CIR 1	2X50	2"5/8	2"1/8	2"1/8	1"3/8	1"1/8	1"3/8
	CIR 2	1X60	—	2"1/8	—	1"3/8	1"1/8	1"1/8
1400	CIR 1	2X50	2"5/8	2"1/8	2"1/8	1"3/8	1"1/8	1"3/8
	CIR 2	1X40	—	1"5/8	—	1"3/8	7/8"	7/8"
1203	CIR 1	2X40	2"1/8	1"5/8	1"5/8	1"3/8	1"1/8	1"1/8
	CIR 2	1X40	—	1"5/8	—	1"3/8	7/8"	7/8"

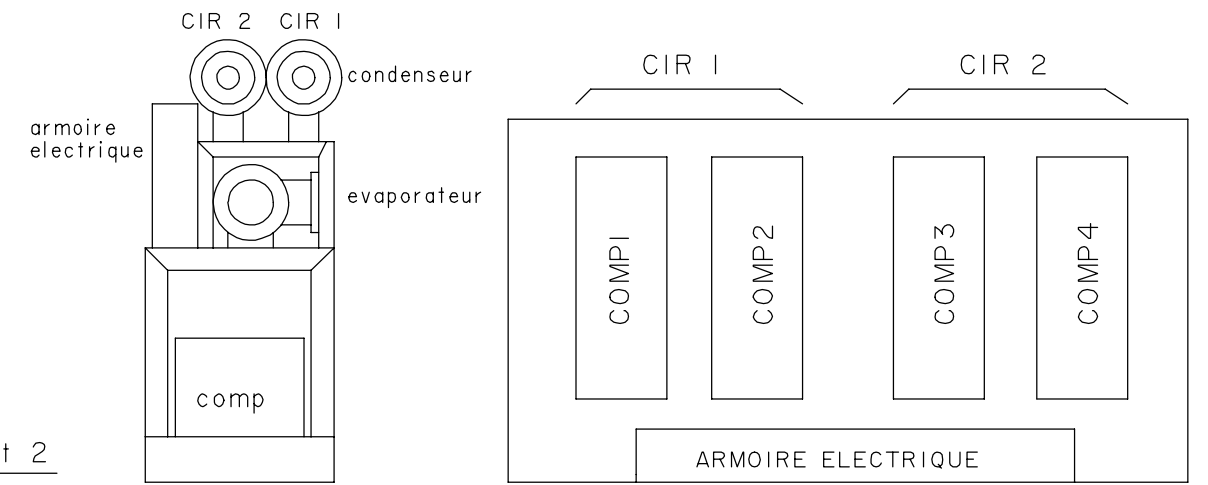
MODELES	CIRCUIT	CONDENSEUR	EVAPORATEUR
1803	CIRCUIT 1	FKN 273.20.IN	FYN 355.20.222
	CIRCUIT 2	FKN 168.20.IR	
1600	CIRCUIT 1	FKN 219.20.IR	FYN 355.20.222
	CIRCUIT 2	FKN 168.20.IR	
1400	CIRCUIT 1	FKN 219.20.IR	FYN 355.20.222
	CIRCUIT 2	FKN 168.20.IR	
1203	CIRCUIT 1	FKN 219.20.IR	FYN 355.20.222
	CIRCUIT 2	FKN 168.20.IR	

JP	31	25/08/93	MODIFIE LES SONDES POUR LE MRSI-4
MODIFIE PAR	IND	N.ETUDE	DATE
		APPAREIL OU UNITE LRP 1203 A 1803	
DESIGNATION SCHEMA FRIGORIFIQUE 3 COMPRESSEURS 2 CIRCUITS		ECHELLE	TRAITEMENT
NUMERO DE COMMANDE:		FOLIO	MASSE:
NOTE D'ETUDE:		1/1	REMPLECE PAR:
VERIFIE PAR:		REMPLECE:	A3 3955960 30
DESSIN PAR: SC		FORMAT	NUMERO DE PLAN
DATE: 24-03-92		A3	3955960
			INDICE
			31

2 CIRCUITS FRIGORIFIQUES IDENTIQUES



MODELES	CIRCUIT Nb	Puissance	Ø A	Ø A'	Ø R	Ø R'	Ø L	Ø D
2400	2	2X60	2"5/8	2"1/8	2"1/8	1"3/8	1"3/8	1"3/8
2200	1	2X60	2"5/8	2"1/8	2"1/8	1"3/8	1"3/8	1"3/8
2000	2	2X50	2"5/8	2"1/8	2"1/8	1"3/8	1"1/8	1"3/8
1804	1	2X50	2"5/8	2"1/8	2"1/8	1"3/8	1"1/8	1"3/8
	1	2X40	2"1/8	1"5/8	1"5/8	1"3/8	1"1/8	1"1/8



IMPLANTATION MATERIEL

MODELES	CONDENSEUR	EVAPORATEUR
2400 CIR 1-2	2 FKN 273.20.IN	FYN 406.25.222
2200 CIR 1	1 FKN 273.20.IN	FYN 406.25.222
2000 CIR 2	1 FKN 219.20.IR	FYN 406.25.222
2000 CIR 1-2	2 FKN 219.20.IR	FYN 355.25.222
1804 CIR 1-2	2 FKN 219.20.IR	FYN 355.25.222

JP	31	26/08/93	MODIFIE LES SONDES POUR LE MRSI-4
MODIFIE PAR	IND	N.ETUDE	DATE
APPAREIL OU UNITE			MATIERE:
LRP 1804 A 2400			
DESIGNATION			ECHELLE
SCHEMA FRIGORIFIQUE			
4 COMPRESSEURS 2 CIRCUITS			TRAITEMENT
NUMERO DE COMMANDE:			REPLACE PAR:
NOTE D'ETUDE:			REPLACE: A3 3955958.30
VERIFIE PAR:			FORMAT
DESSIN PAR:			NUMERO DE PLAN
SC			INDICE
DATE:24-03-92			A3 3955958 31