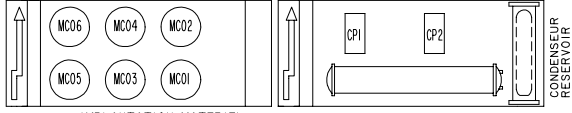


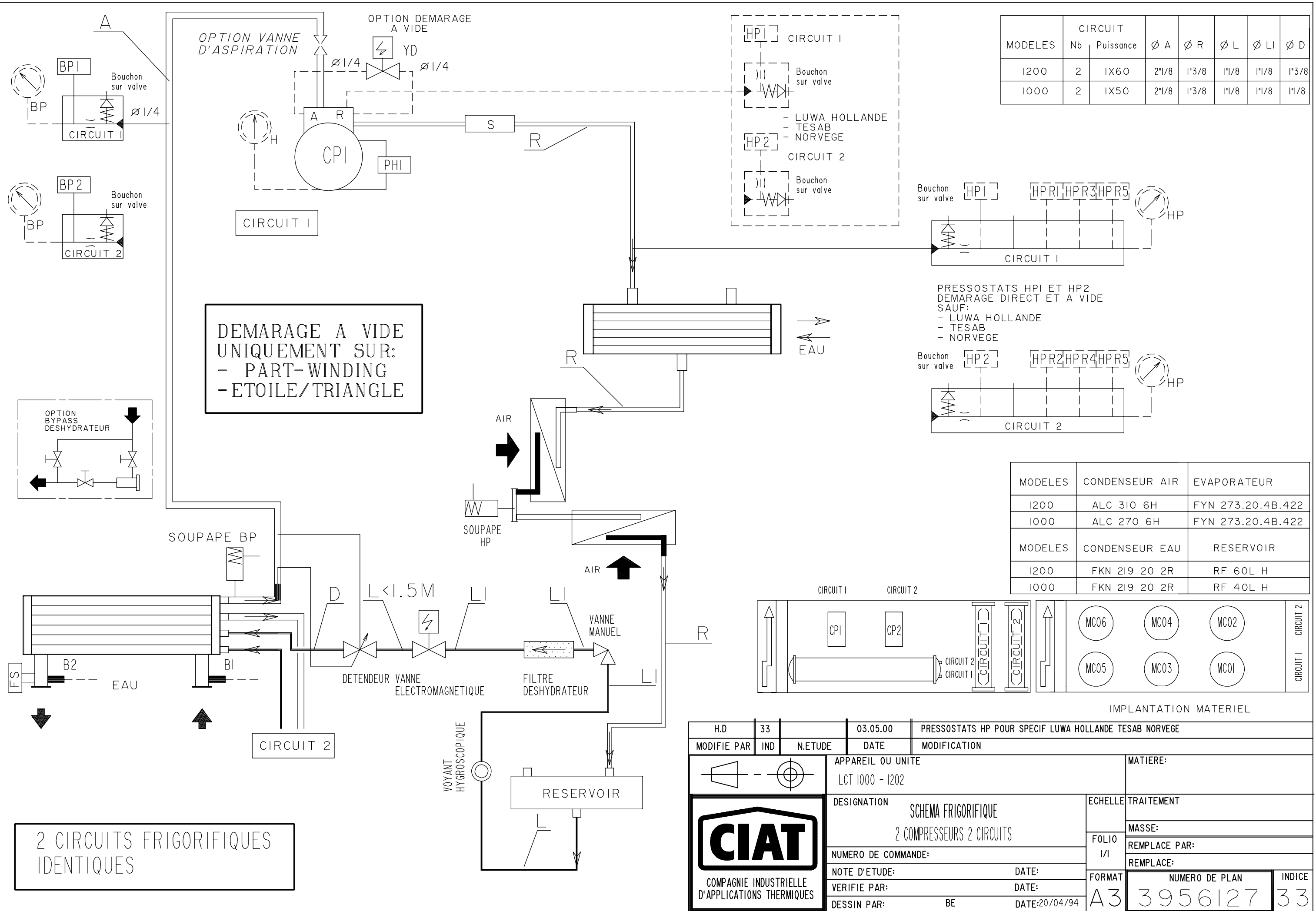
MODELES	CIRCUIT		Ø A	Ø A'	Ø R	Ø R'	Ø L	Ø LI	Ø D
	Nb	Puissance							
1000	1	2X50	2 5/8	2 1/8	2 1/8	1 3/8	1 1/8	1 3/8	1 3/8
1202	1	2X60	2 5/8	2 1/8	2 1/8	1 3/8	1 3/8	1 3/8	1 3/8

DEMARRAGE A VIDE
UNIQUEMENT SUR:
 - PART-WINDING
 - ETOILE/TRIANGLE

MODELES	CONDENSEUR	EVAPORATEUR
1000	ALC 270 6H	FYN 273.20.4B.4II
1202	ALC 310 6H	FYN 273.20.4B.4II
	CONDENSEUR	RESERVOIR
1000	FKN 273 20 2R	RF 140L H
1202	FKN 355 20 2R	RF 140L H



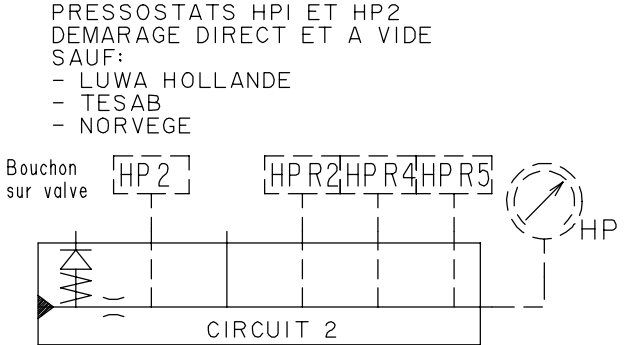
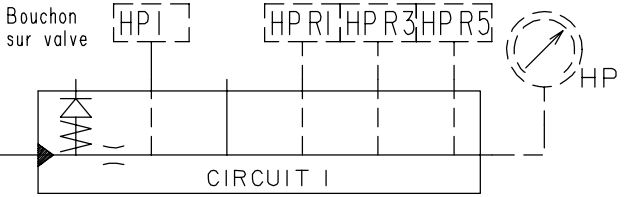
H.D.	33	04.05.00	PRESSOSTAT HP2 POUR OPTION DEMARRAGE A VIDE LUWA HOLLANDE TESAB NORVEGE
MODIFIE PAR	IND	NETUDE	DATE
APPAREIL OU UNITE		LCT 1000 - 1202	
DESIGNATION		SCHEMA FRIGORIFIQUE	
		2 COMPRESSEURS 1 CIRCUIT	
NUMERO DE COMMANDE:		DATE:	
NOTE D'ETUDE:		DATE:	
VERIFIE PAR:		DATE:	
DESSIN PAR:		DATE: 10/06/94	
MATIERE:		ECHELLE:	
		TRAITEMENT:	
		MASSE:	
		REMPLECE PAR:	
		REMPLECE:	
FORMAT	A3	NUMERO DE PLAN	3956146
		INDICE	33



DEMARAGE A VIDE
UNIQUEMENT SUR:
- PART-WINDING
- ETOILE/TRIANGLE

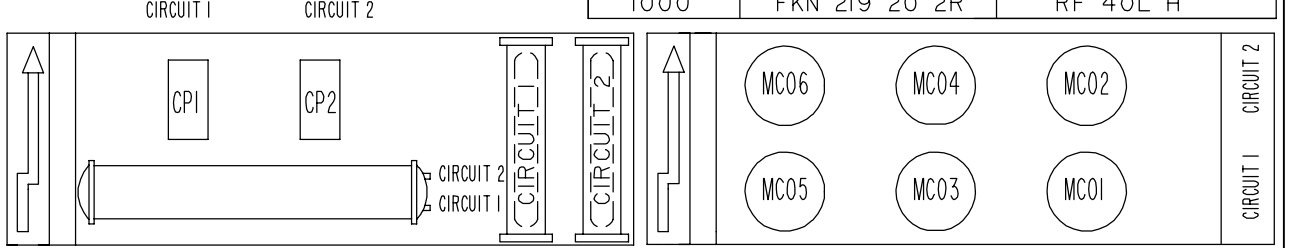
2 CIRCUITS FRIGORIFIQUES
IDENTIQUES

MODELES	CIRCUIT		Ø A	Ø R	Ø L	Ø LI	Ø D
	Nb	Puissance					
1200	2	1X60	2"1/8	1"3/8	1"1/8	1"1/8	1"3/8
1000	2	1X50	2"1/8	1"3/8	1"1/8	1"1/8	1"1/8



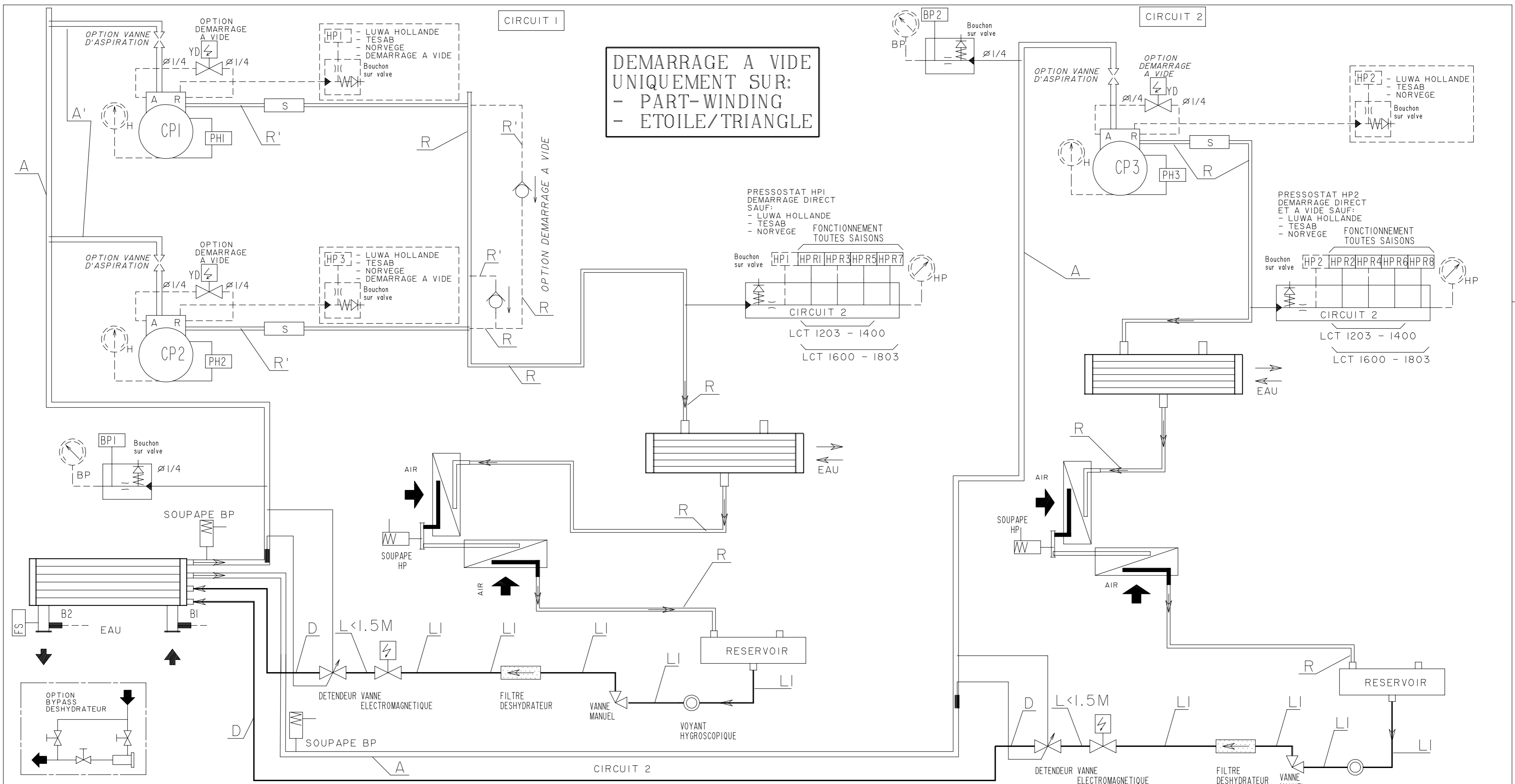
PRESSOSTATS HP1 ET HP2
DEMARAGE DIRECT ET A VIDE
SAUF:
- LUWA HOLLANDE
- TESAB
- NORVEGE

MODELES	CONDENSEUR AIR	EVAPORATEUR
1200	ALC 310 6H	FYN 273.20.4B.422
1000	ALC 270 6H	FYN 273.20.4B.422
MODELES	CONDENSEUR EAU	RESERVOIR
1200	FKN 219 20 2R	RF 60L H
1000	FKN 219 20 2R	RF 40L H



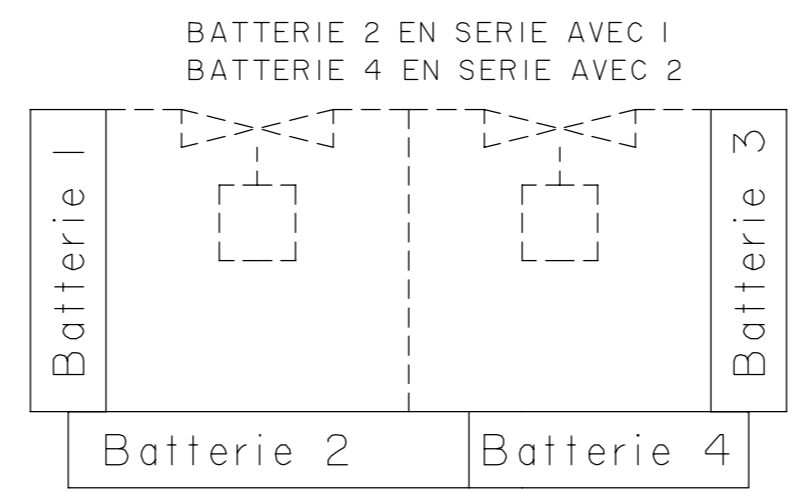
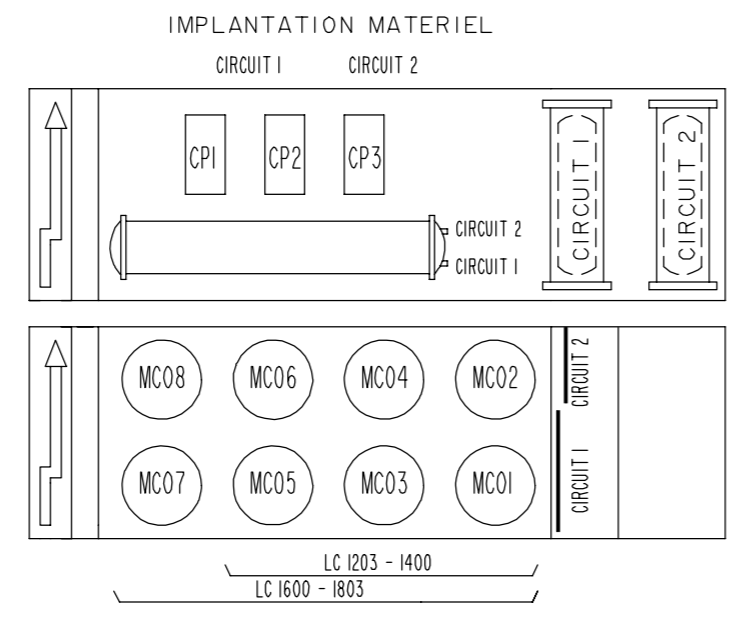
IMPLANTATION MATERIEL

H.D	33	03.05.00	03.05.00	PRESSOSTATS HP POUR SPECIF LUWA HOLLANDE TESAB NORVEGE
MODIFIE PAR	IND	N.ETUDE	DATE	MODIFICATION
				APPAREIL OU UNITE LCT 1000 - 1202
				MATIERE:
DESIGNATION SCHEMA FRIGORIFIQUE 2 COMPRESSEURS 2 CIRCUITS				ECHELLE TRAITEMENT
NUMERO DE COMMANDE:				FOLIO 1/1 MASSE:
NOTE D'ETUDE:				REPLACE PAR:
VERIFIE PAR:				REPLACE:
DESSIN PAR: BE				FORMAT A3
DATE: 20/04/94				NUMERO DE PLAN 3956127
				INDICE 33



MODELES	CONDENSEUR	RESERVOIR
1803	FKN 355-20-2N + 219-20-2R	RF 140L+60L HORIZONTAL
1600	FKN 273-20-2R + 219-20-2R	RF 140L+60L HORIZONTAL
1400	FKN 273-20-2R + 219-20-2N	RF 140L+40L HORIZONTAL
1203	FKN 273-20-2R + 219-20-2N	RF 90L+40L HORIZONTAL

MODELES	CIRCUIT		ØA	ØA'	ØR	ØR	ØL	ØLI	ØD
	Nb	Puissance							
1803	CIR 1	1	2X60	2'5/8	2'1/8	2'1/8	1'3/8	1'3/8	1'3/8
	CIR 2	1	1X60	2'1/8		1'3/8	1'1/8	1'1/8	1'3/8
1600	CIR 1	1	2X50	2'5/8	2'1/8	2'1/8	1'3/8	1'3/8	1'3/8
	CIR 2	1	1X60	2'1/8		1'3/8	1'1/8	1'1/8	1'3/8
1400	CIR 1	1	2X50	2'5/8	2'1/8	2'1/8	1'3/8	1'1/8	1'3/8
	CIR 2	1	1X40	1'5/8		1'3/8	7/8	7/8	1'1/8
1203	CIR 1	1	2X40	2'1/8	1'5/8	1'5/8	1'3/8	1'1/8	1'3/8
	CIR 2	1	1X40	1'5/8		1'3/8	7/8	7/8	1'1/8



MODELES	CONDENSEUR	EVAPORATEUR
1803	ALC 430 8H	FYN 355.20.4M.432
1600	ALC 400 8H	FYN 355.20.4M.432
1400	ALC 370 6H	FYN 355.20.4M.432
1203	ALC 340 6H	FYN 355.20.4M.432

H.D.	33	09.05.00	PRESSOSTAT HP3 POUR LUWA HOLLANDE TESAB NORVEGE ET DEM A VIDE
MODIFIE PAR	IND	N.ETUDE	DATE
APPAREIL OU UNITE		MODIFICATION	
LCT 1203 A 1803			
DESIGNATION		EHELLE	
SCHEMA FRIGORIFIQUE		TRAITEMENT	
NUMERO DE COMMANDE:		FOLIO	
NOTE D'ETUDE:		REPLACE PAR:	
VERIFIE PAR:		REPLACE:	
DESSIN PAR: BE		FORMAT	
		NUMERO DE PLAN	
		INDICE	
		A2	
		3956137	
		33	



