



# AlfaTop

## 4-Discharge commercial air cooler

### General information & application

AlfaTop is an ultra-slim ceiling mounted commercial air cooler range for cooling and freezing applications. The quadruple discharge design in combination with its modern casing construction makes AlfaTop especially suitable for application in small to medium sized processing rooms and for instance supermarkets. AlfaTop may also be used as an air heater in various applications.

Room temperatures	+20 to -15°C
Refrigerants	all H(C)FC, brine
Capacities (SC2)	1.6 up to 38.1 kW
Air volume	2911 up to 11955 m <sup>3</sup> /h.

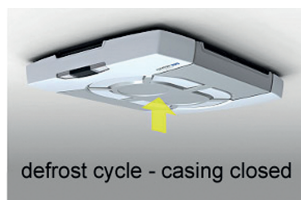
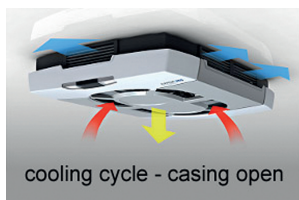
### Coil

Coil manufactured from internally rippled Cu tubes  $\varnothing$  12mm (brine: smooth tubing) and aluminium fins. Tube pitch 48 x 41.57 mm staggered. Fin spacings 4 and 6 mm.

### Patented casing

AlfaTop stands out by a revolutionary new casing design, making this product really into a 'looker' amongst traditional air coolers. AlfaTop casing is available in ABS or epoxy coated sheetsteel.

A patented automatic casing closure system keeps the defrost energy inside the cooler casing, thus substantially lowering defrost times and reducing operating costs.



### Fan motors

Blow-through fans  $\varnothing$  350 mm or 450 mm, fan motors both 230/50/1 and 400/50/3. Enclosed design spray-tight fan motors, protection class IP-54. Motors are equipped with a thermal safety device in the windings, connected to separate terminals in the box.



AlfaTop

### Certifications

All DX cooler models are "Eurovent Certify All" certified. The Alfa Laval quality system is in accordance with ISO 9001. All products are manufactured according to CE and PED rules

### Test

Design pressure 31/10 barg (DX/brine).

Each heat exchanger is leak tested with dry air and supplied with a nitrogen pre-charge.

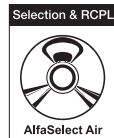
### Options

- EC fan motors
- Electric defrost
- Fin spacings 3, 5 or 7 mm
- Water/glycol execution
- Vacuum pump for water drain
- Deluxe pack
  - *airthrow enhancer*
  - *Modbus*
  - *external LED panel*
- Casing material epoxy coated sheetsteel

cooler model	Fin spacing 4 mm			Fin spacing 6 mm			Int. vol. dm <sup>2</sup>	Fans				Connections		
	cap.	air	coil	cap.	air	coil		nr.	fan power W		air	LpA	in mm	out mm
	SC1 kW	flow m <sup>3</sup> /h	surface m <sup>2</sup>	SC2 kW	flow m <sup>3</sup> /h	surface m <sup>2</sup>			230/1	400/3	throw m	at 5 m dB(A)		
ATE 351A	3.2	2911	13	1.6	2935	9	1.3	1	175	180	8	53	12	16
ATE 351B	4.8	2840	19	2.4	2878	13	1.9	1	175	180	8	53	12	18
ATE 351C	5.9	2766	26	3.1	2818	17	2.5	1	175	180	8	53	12	22
ATE 351D	6.9	2692	32	3.8	2757	22	3.2	1	175	180	8	53	12	22
ATE 351E	7.6	2619	38	4.3	2695	26	3.8	1	175	180	7	53	12	22
ATE 352C	9.6	5166	38	5.1	5329	26	3.8	2	350	360	6	56	12	28
ATE 352D	11.3	4944	48	6.2	5137	33	4.8	2	350	360	6	56	12	28
ATE 352E	12.6	4740	58	7.0	4954	39	5.7	2	350	360	6	56	12	28
ATE 451C	12.5	6260	51	6.6	6338	35	5.1	1	490	480	13	66	12	28
ATE 451D	14.8	6149	64	8.0	6246	44	6.3	1	490	480	12	66	12	35
ATE 451E	16.3	6042	77	9.0	6155	52	7.6	1	490	480	12	66	16	35
ATE 452C	25.7	12520	103	13.6	12676	70	10.1	2	980	960	9	69	16	42
ATE 452D	29.5	12299	128	16.1	12491	87	12.7	2	980	960	9	69	16	42
ATE 452E	33.2	12083	154	18.5	12309	105	15.2	2	980	960	9	69	16	42
ATE 452F	33.9	11873	179	19.4	12130	122	17.7	2	980	960	8	69	16	42
ATE 452G	38.1	11668	205	22.0	11955	139	20.3	2	980	960	8	69	16	54

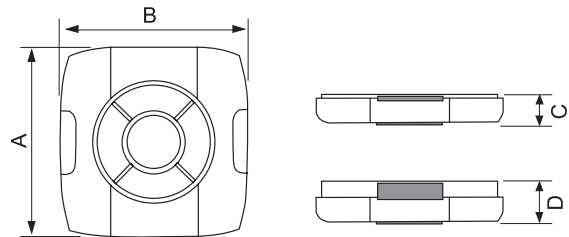
### Selection

Air cooler selection and RCPL pricing may be performed with our AlfaSelect Air selection software



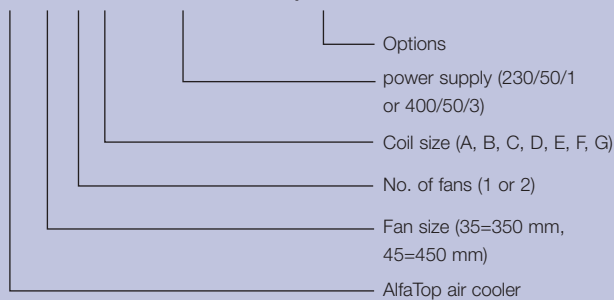
Hinged casing for easy maintenance & cleaning

model	Dimensions mm			
	A	B	C	D
ATE 351	1421	1394	300	381
ATE 352	1421	1896	300	381
ATE 451	1661	1660	380	630
ATE 452	1661	2862	380	630



### Code description

#### ATE 35 2 A - 230/50/1 - options



### Benefits

- 360° uniform air flow
- Dirt repellent materials & hygienic construction
- Modern design
- Excellent sound characteristics
- Reliable performance, Eurovent certified
- Easy installation, cleaning & maintenance.
- Highly efficient defrost system
- Low total cost of ownership.
- Two-year product guarantee.

ERC00225EN 1007

Alfa Laval reserves the right to change specification without prior notification.

### How to contact Alfa Laval

Up-to-date Alfa Laval contact details for all countries are always available on our website at [www.alfalaval.com](http://www.alfalaval.com)

